



Full wwPDB X-ray Structure Validation Report ⓘ

Apr 21, 2026 – 12:12 PM EDT

PDB ID : 9ZEE / pdb_00009zee
Title : QatB-QatC complex in qatABCD anti-phage defense with ATP
Authors : Gao, A.; Wassarman, D.R.; Kranzusch, P.J.
Deposited on : 2025-11-29
Resolution : 1.81 Å(reported)

This is a Full wwPDB X-ray Structure Validation Report for a publicly released PDB entry.

We welcome your comments at validation@mail.wwpdb.org

A user guide is available at

<https://www.wwpdb.org/validation/2017/XrayValidationReportHelp>

with specific help available everywhere you see the ⓘ symbol.

The types of validation reports are described at

<http://www.wwpdb.org/validation/2017/FAQs#types>.

The following versions of software and data (see [references ⓘ](#)) were used in the production of this report:

MolProbity : 4-5-2 with Phenix2.0
Mogul : 2022.3.0, CSD as543be (2022)
Xtriage (Phenix) : 2.0
EDS : 3.0
Buster-report : wwPDB partial adaption of 1.1.7 (2018)
Percentile statistics : 20250101.v01 (using entries in the PDB archive January 1st 2025)
CCP4 : 9.0.010 (Gargrove)
Density-Fitness : 1.0.12
Ideal geometry (proteins) : Engh & Huber (2001)
Ideal geometry (DNA, RNA) : Parkinson et al. (1996)
Validation Pipeline (wwPDB-VP) : 2.49

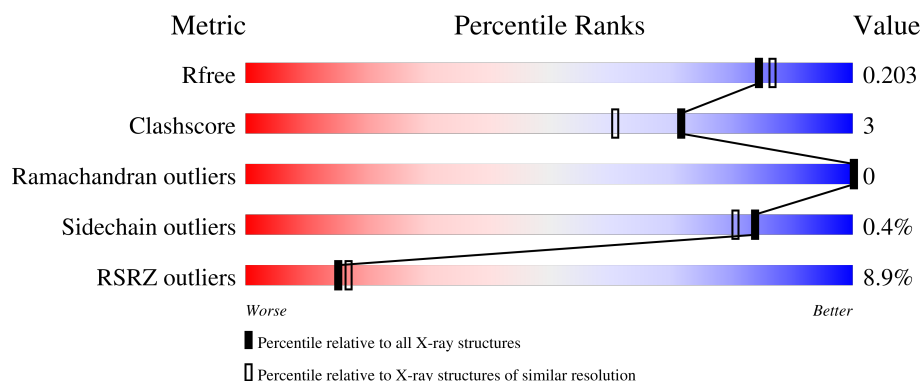
1 Overall quality at a glance

The following experimental techniques were used to determine the structure:

X-RAY DIFFRACTION

The reported resolution of this entry is 1.81 Å.

Percentile scores (ranging between 0-100) for global validation metrics of the entry are shown in the following graphic. The table shows the number of entries on which the scores are based.



Metric	Whole archive (#Entries)	Similar resolution (#Entries, resolution range(Å))
R_{free}	180053	1112 (1.82-1.82)
Clashscore	190562	1148 (1.82-1.82)
Ramachandran outliers	187476	1140 (1.82-1.82)
Sidechain outliers	187428	1140 (1.82-1.82)
RSRZ outliers	180081	1112 (1.82-1.82)

The table below summarises the geometric issues observed across the polymeric chains and their fit to the electron density. The red, orange, yellow and green segments of the lower bar indicate the fraction of residues that contain outliers for ≥ 3 , 2, 1 and 0 types of geometric quality criteria respectively. A grey segment represents the fraction of residues that are not modelled. The numeric value for each fraction is indicated below the corresponding segment, with a dot representing fractions $\leq 5\%$. The upper red bar (where present) indicates the fraction of residues that have poor fit to the electron density. The numeric value is given above the bar.

Mol	Chain	Length	Quality of chain
1	A	287	
2	B	466	

2 Entry composition [i](#)

There are 6 unique types of molecules in this entry. The entry contains 5488 atoms, of which 0 are hydrogens and 0 are deuteriums.

In the tables below, the ZeroOcc column contains the number of atoms modelled with zero occupancy, the AltConf column contains the number of residues with at least one atom in alternate conformation and the Trace column contains the number of residues modelled with at most 2 atoms.

- Molecule 1 is a protein called QatB.

Mol	Chain	Residues	Atoms					ZeroOcc	AltConf	Trace
1	A	211	Total	C	N	O	S	0	0	0
			1564	961	285	312	6			

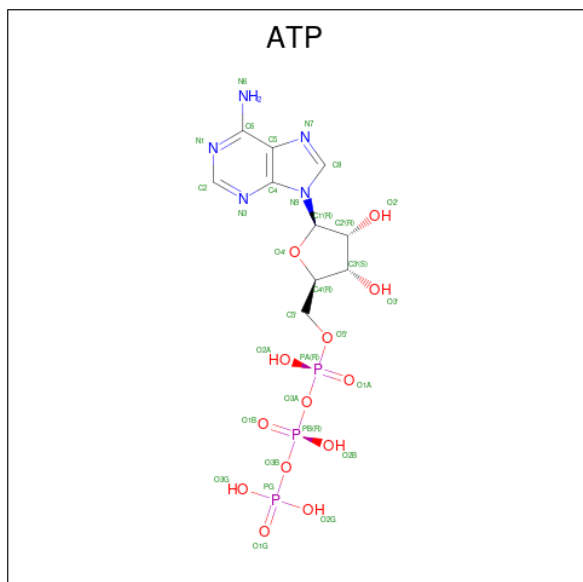
- Molecule 2 is a protein called QatC.

Mol	Chain	Residues	Atoms					ZeroOcc	AltConf	Trace
2	B	427	Total	C	N	O	S	0	0	0
			3321	2085	595	624	17			

- Molecule 3 is ZINC ION (CCD ID: ZN) (formula: Zn).

Mol	Chain	Residues	Atoms		ZeroOcc	AltConf
3	B	1	Total	Zn	0	0
			1	1		

- Molecule 4 is ADENOSINE-5'-TRIPHOSPHATE (CCD ID: ATP) (formula: C₁₀H₁₆N₅O₁₃P₃) (labeled as "Ligand of Interest" by depositor).



Mol	Chain	Residues	Atoms					ZeroOcc	AltConf
4	B	1	Total	C	N	O	P	0	0
			31	10	5	13	3		

- Molecule 5 is MAGNESIUM ION (CCD ID: MG) (formula: Mg).

Mol	Chain	Residues	Atoms		ZeroOcc	AltConf
5	B	1	Total	Mg	0	0
			1	1		

- Molecule 6 is water.

Mol	Chain	Residues	Atoms		ZeroOcc	AltConf
6	A	160	Total	O	0	0
			160	160		
6	B	410	Total	O	0	0
			410	410		

4 Data and refinement statistics

Property	Value	Source
Space group	P 21 21 21	Depositor
Cell constants a, b, c, α , β , γ	70.70Å 74.37Å 134.30Å 90.00° 90.00° 90.00°	Depositor
Resolution (Å)	67.15 – 1.81 67.15 – 1.81	Depositor EDS
% Data completeness (in resolution range)	99.8 (67.15-1.81) 99.8 (67.15-1.81)	Depositor EDS
R_{merge}	0.15	Depositor
R_{sym}	(Not available)	Depositor
$\langle I/\sigma(I) \rangle$ ¹	1.87 (at 1.81Å)	Xtriage
Refinement program	PHENIX 1.21.2_5419	Depositor
R, R_{free}	0.181 , 0.203 0.181 , 0.203	Depositor DCC
R_{free} test set	3300 reflections (4.81%)	wwPDB-VP
Wilson B-factor (Å ²)	26.4	Xtriage
Anisotropy	0.225	Xtriage
Bulk solvent k_{sol} (e/Å ³), B_{sol} (Å ²)	0.34 , 45.5	EDS
L-test for twinning ²	$\langle L \rangle = 0.49$, $\langle L^2 \rangle = 0.32$	Xtriage
Estimated twinning fraction	0.019 for k,h,-l	Xtriage
F_o, F_c correlation	0.96	EDS
Total number of atoms	5488	wwPDB-VP
Average B, all atoms (Å ²)	34.0	wwPDB-VP

Xtriage's analysis on translational NCS is as follows: *The largest off-origin peak in the Patterson function is 5.52% of the height of the origin peak. No significant pseudotranslation is detected.*

¹Intensities estimated from amplitudes.

²Theoretical values of $\langle |L| \rangle$, $\langle L^2 \rangle$ for acentric reflections are 0.5, 0.333 respectively for untwinned datasets, and 0.375, 0.2 for perfectly twinned datasets.

5 Model quality

5.1 Standard geometry

Bond lengths and bond angles in the following residue types are not validated in this section: MG, ZN, ATP

The Z score for a bond length (or angle) is the number of standard deviations the observed value is removed from the expected value. A bond length (or angle) with $|Z| > 5$ is considered an outlier worth inspection. RMSZ is the root-mean-square of all Z scores of the bond lengths (or angles).

Mol	Chain	Bond lengths		Bond angles	
		RMSZ	# Z >5	RMSZ	# Z >5
1	A	0.25	0/1582	0.43	0/2132
2	B	0.27	0/3388	0.45	0/4594
All	All	0.26	0/4970	0.44	0/6726

There are no bond length outliers.

There are no bond angle outliers.

There are no chirality outliers.

There are no planarity outliers.

5.2 Too-close contacts

In the following table, the Non-H and H(model) columns list the number of non-hydrogen atoms and hydrogen atoms in the chain respectively. The H(added) column lists the number of hydrogen atoms added and optimized by MolProbity. The Clashes column lists the number of clashes within the asymmetric unit, whereas Symm-Clashes lists symmetry-related clashes.

Mol	Chain	Non-H	H(model)	H(added)	Clashes	Symm-Clashes
1	A	1564	0	1539	9	0
2	B	3321	0	3275	28	0
3	B	1	0	0	0	0
4	B	31	0	12	0	0
5	B	1	0	0	0	0
6	A	160	0	0	2	2
6	B	410	0	0	10	2
All	All	5488	0	4826	32	2

The all-atom clashscore is defined as the number of clashes found per 1000 atoms (including hydrogen atoms). The all-atom clashscore for this structure is 3.

All (32) close contacts within the same asymmetric unit are listed below, sorted by their clash magnitude.

Atom-1	Atom-2	Interatomic distance (Å)	Clash overlap (Å)
2:B:187:THR:N	6:B:601:HOH:O	2.19	0.75
2:B:277:SER:HB2	6:B:694:HOH:O	1.88	0.74
1:A:167:GLY:HA2	2:B:275:ALA:HB3	1.77	0.66
1:A:252:ARG:HD3	6:A:302:HOH:O	1.97	0.62
2:B:399:ARG:NH2	6:B:606:HOH:O	2.34	0.59
2:B:3:HIS:HB2	6:B:890:HOH:O	2.02	0.59
2:B:55:LEU:HB3	2:B:247:ALA:HB1	1.87	0.55
2:B:306:PHE:CD2	2:B:314:MET:HE3	2.42	0.54
2:B:47:ILE:HG13	2:B:243:MET:HE1	1.91	0.52
1:A:144:GLN:NE2	1:A:148:GLN:HG2	2.24	0.51
2:B:276:CYS:HA	6:B:673:HOH:O	2.09	0.51
2:B:3:HIS:HB3	6:B:622:HOH:O	2.10	0.51
1:A:256:TRP:CE2	1:A:267:VAL:HG22	2.47	0.49
2:B:56:SER:HB3	2:B:141:PRO:HD3	1.94	0.49
2:B:2:ARG:HH21	2:B:26:VAL:HG21	1.78	0.48
2:B:399:ARG:CZ	6:B:606:HOH:O	2.61	0.48
2:B:337:PRO:HA	2:B:352:LYS:O	2.14	0.48
2:B:176:LEU:HD21	2:B:210:VAL:HG23	1.97	0.47
1:A:164:ILE:HA	2:B:276:CYS:SG	2.55	0.47
2:B:54:GLY:HA3	2:B:145:ARG:HA	1.98	0.46
1:A:213:MET:HE2	2:B:271:ARG:HD2	1.97	0.46
2:B:262:ILE:HG13	6:B:891:HOH:O	2.17	0.45
2:B:231:ARG:NE	2:B:278:THR:HG22	2.31	0.45
2:B:267:PRO:CG	2:B:274:GLY:HA2	2.47	0.45
1:A:170:ARG:HD3	2:B:275:ALA:HB2	1.99	0.44
2:B:2:ARG:HA	6:B:856:HOH:O	2.17	0.43
2:B:437:GLN:CD	6:B:733:HOH:O	2.63	0.41
2:B:180:HIS:CE1	2:B:237:PHE:HA	2.54	0.41
1:A:213:MET:HE2	2:B:271:ARG:HB3	2.03	0.41
2:B:357:CYS:SG	2:B:359:PRO:HD2	2.61	0.40
1:A:159:PRO:HD3	6:A:329:HOH:O	2.20	0.40
2:B:72:THR:O	2:B:76:THR:HG23	2.21	0.40

All (2) symmetry-related close contacts are listed below. The label for Atom-2 includes the symmetry operator and encoded unit-cell translations to be applied.

Atom-1	Atom-2	Interatomic distance (Å)	Clash overlap (Å)
6:A:429:HOH:O	6:B:915:HOH:O[4_445]	2.02	0.18
6:A:437:HOH:O	6:B:948:HOH:O[4_455]	2.16	0.04

5.3 Torsion angles

5.3.1 Protein backbone

In the following table, the Percentiles column shows the percent Ramachandran outliers of the chain as a percentile score with respect to all X-ray entries followed by that with respect to entries of similar resolution.

The Analysed column shows the number of residues for which the backbone conformation was analysed, and the total number of residues.

Mol	Chain	Analysed	Favoured	Allowed	Outliers	Percentiles	
1	A	207/287 (72%)	204 (99%)	3 (1%)	0	100	100
2	B	419/466 (90%)	409 (98%)	10 (2%)	0	100	100
All	All	626/753 (83%)	613 (98%)	13 (2%)	0	100	100

There are no Ramachandran outliers to report.

5.3.2 Protein sidechains

In the following table, the Percentiles column shows the percent sidechain outliers of the chain as a percentile score with respect to all X-ray entries followed by that with respect to entries of similar resolution.

The Analysed column shows the number of residues for which the sidechain conformation was analysed, and the total number of residues.

Mol	Chain	Analysed	Rotameric	Outliers	Percentiles	
1	A	160/217 (74%)	160 (100%)	0	100	100
2	B	359/392 (92%)	357 (99%)	2 (1%)	78	74
All	All	519/609 (85%)	517 (100%)	2 (0%)	84	81

All (2) residues with a non-rotameric sidechain are listed below:

Mol	Chain	Res	Type
2	B	142	GLU
2	B	410	ARG

Sometimes sidechains can be flipped to improve hydrogen bonding and reduce clashes. All (4) such sidechains are listed below:

Mol	Chain	Res	Type
1	A	144	GLN

Continued on next page...

Continued from previous page...

Mol	Chain	Res	Type
1	A	171	GLN
2	B	386	GLN
2	B	397	HIS

5.3.3 RNA ⓘ

There are no RNA molecules in this entry.

5.4 Non-standard residues in protein, DNA, RNA chains ⓘ

There are no non-standard protein/DNA/RNA residues in this entry.

5.5 Carbohydrates ⓘ

There are no oligosaccharides in this entry.

5.6 Ligand geometry ⓘ

Of 3 ligands modelled in this entry, 2 are monoatomic - leaving 1 for Mogul analysis.

In the following table, the Counts columns list the number of bonds (or angles) for which Mogul statistics could be retrieved, the number of bonds (or angles) that are observed in the model and the number of bonds (or angles) that are defined in the Chemical Component Dictionary. The Link column lists molecule types, if any, to which the group is linked. The Z score for a bond length (or angle) is the number of standard deviations the observed value is removed from the expected value. A bond length (or angle) with $|Z| > 2$ is considered an outlier worth inspection. RMSZ is the root-mean-square of all Z scores of the bond lengths (or angles).

Mol	Type	Chain	Res	Link	Bond lengths			Bond angles		
					Counts	RMSZ	$\# Z > 2$	Counts	RMSZ	$\# Z > 2$
4	ATP	B	502	5	32,33,33	0.59	1 (3%)	48,52,52	0.61	1 (2%)

In the following table, the Chirals column lists the number of chiral outliers, the number of chiral centers analysed, the number of these observed in the model and the number defined in the Chemical Component Dictionary. Similar counts are reported in the Torsion and Rings columns. '-' means no outliers of that kind were identified.

Mol	Type	Chain	Res	Link	Chirals	Torsions	Rings
4	ATP	B	502	5	-	4/22/38/38	0/3/3/3

All (1) bond length outliers are listed below:

Mol	Chain	Res	Type	Atoms	Z	Observed(Å)	Ideal(Å)
4	B	502	ATP	PB-O3B	-2.25	1.57	1.59

All (1) bond angle outliers are listed below:

Mol	Chain	Res	Type	Atoms	Z	Observed(°)	Ideal(°)
4	B	502	ATP	O2B-PB-O3B	2.06	112.85	107.27

There are no chirality outliers.

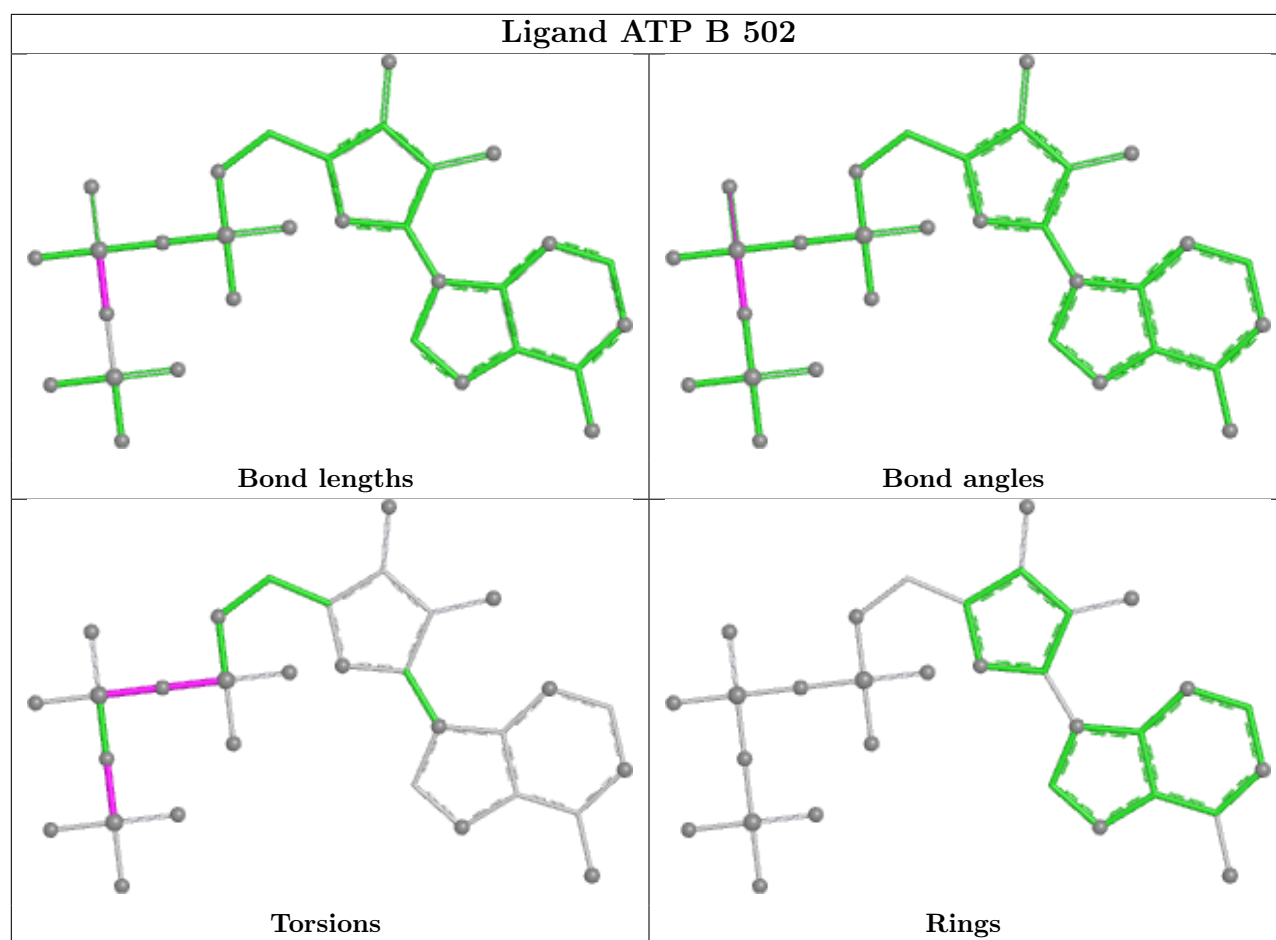
All (4) torsion outliers are listed below:

Mol	Chain	Res	Type	Atoms
4	B	502	ATP	PB-O3B-PG-O2G
4	B	502	ATP	PB-O3B-PG-O3G
4	B	502	ATP	PB-O3A-PA-O2A
4	B	502	ATP	PA-O3A-PB-O2B

There are no ring outliers.

No monomer is involved in short contacts.

The following is a two-dimensional graphical depiction of Mogul quality analysis of bond lengths, bond angles, torsion angles, and ring geometry for all instances of the Ligand of Interest. In addition, ligands with molecular weight > 250 and outliers as shown on the validation Tables will also be included. For torsion angles, if less than 5% of the Mogul distribution of torsion angles is within 10 degrees of the torsion angle in question, then that torsion angle is considered an outlier. Any bond that is central to one or more torsion angles identified as an outlier by Mogul will be highlighted in the graph. For rings, the root-mean-square deviation (RMSD) between the ring in question and similar rings identified by Mogul is calculated over all ring torsion angles. If the average RMSD is greater than 60 degrees and the minimal RMSD between the ring in question and any Mogul-identified rings is also greater than 60 degrees, then that ring is considered an outlier. The outliers are highlighted in purple. The color gray indicates Mogul did not find sufficient equivalents in the CSD to analyse the geometry.



5.7 Other polymers [i](#)

There are no such residues in this entry.

5.8 Polymer linkage issues [i](#)

There are no chain breaks in this entry.

6 Fit of model and data

6.1 Protein, DNA and RNA chains

In the following table, the column labelled ‘#RSRZ > 2’ contains the number (and percentage) of RSRZ outliers, followed by percent RSRZ outliers for the chain as percentile scores relative to all X-ray entries and entries of similar resolution. The OWAB column contains the minimum, median, 95th percentile and maximum values of the occupancy-weighted average B-factor per residue. The column labelled ‘Q < 0.9’ lists the number of (and percentage) of residues with an average occupancy less than 0.9.

Mol	Chain	Analysed	<RSRZ>	#RSRZ>2	OWAB(Å ²)	Q<0.9
1	A	211/287 (73%)	0.27	18 (8%) 16 18	17, 31, 73, 103	0
2	B	427/466 (91%)	0.16	39 (9%) 15 16	17, 27, 58, 80	0
All	All	638/753 (84%)	0.19	57 (8%) 15 17	17, 29, 63, 103	0

All (57) RSRZ outliers are listed below:

Mol	Chain	Res	Type	RSRZ
1	A	257	PRO	6.3
2	B	180	HIS	6.0
2	B	274	GLY	5.3
1	A	256	TRP	5.0
2	B	275	ALA	5.0
1	A	259	PRO	4.7
1	A	185	GLY	4.5
2	B	413	HIS	4.3
1	A	258	ALA	4.2
2	B	270	PRO	4.2
2	B	277	SER	4.1
1	A	233	ILE	3.9
1	A	232	ARG	3.9
2	B	269	ASP	3.8
2	B	456	ILE	3.7
2	B	351	PRO	3.5
2	B	390	THR	3.5
1	A	261	ASP	3.5
1	A	260	THR	3.4
2	B	452	GLY	3.3
1	A	231	GLU	3.3
2	B	216	PHE	3.3
2	B	276	CYS	3.3
2	B	393	SER	3.2

Continued on next page...

Continued from previous page...

Mol	Chain	Res	Type	RSRZ
2	B	209	HIS	3.2
2	B	272	ARG	3.2
2	B	268	LEU	3.1
1	A	262	GLN	3.0
1	A	184	GLY	3.0
2	B	453	VAL	3.0
2	B	230	LEU	3.0
2	B	454	THR	2.9
2	B	457	PRO	2.9
2	B	388	LEU	2.9
1	A	216	LEU	2.8
2	B	273	LEU	2.8
2	B	385	ALA	2.8
2	B	387	ALA	2.8
2	B	41	TYR	2.8
2	B	451	LYS	2.8
2	B	450	LEU	2.7
2	B	337	PRO	2.7
2	B	271	ARG	2.6
2	B	279	ARG	2.6
1	A	255	GLN	2.6
2	B	229	THR	2.6
1	A	217	GLY	2.5
2	B	237	PHE	2.4
1	A	234	GLN	2.4
2	B	386	GLN	2.3
2	B	455	ALA	2.3
1	A	78	ARG	2.3
1	A	73	PHE	2.2
2	B	142	GLU	2.2
2	B	233	ARG	2.2
2	B	228	ASP	2.1
2	B	278	THR	2.1

6.2 Non-standard residues in protein, DNA, RNA chains ⓘ

There are no non-standard protein/DNA/RNA residues in this entry.

6.3 Carbohydrates ⓘ

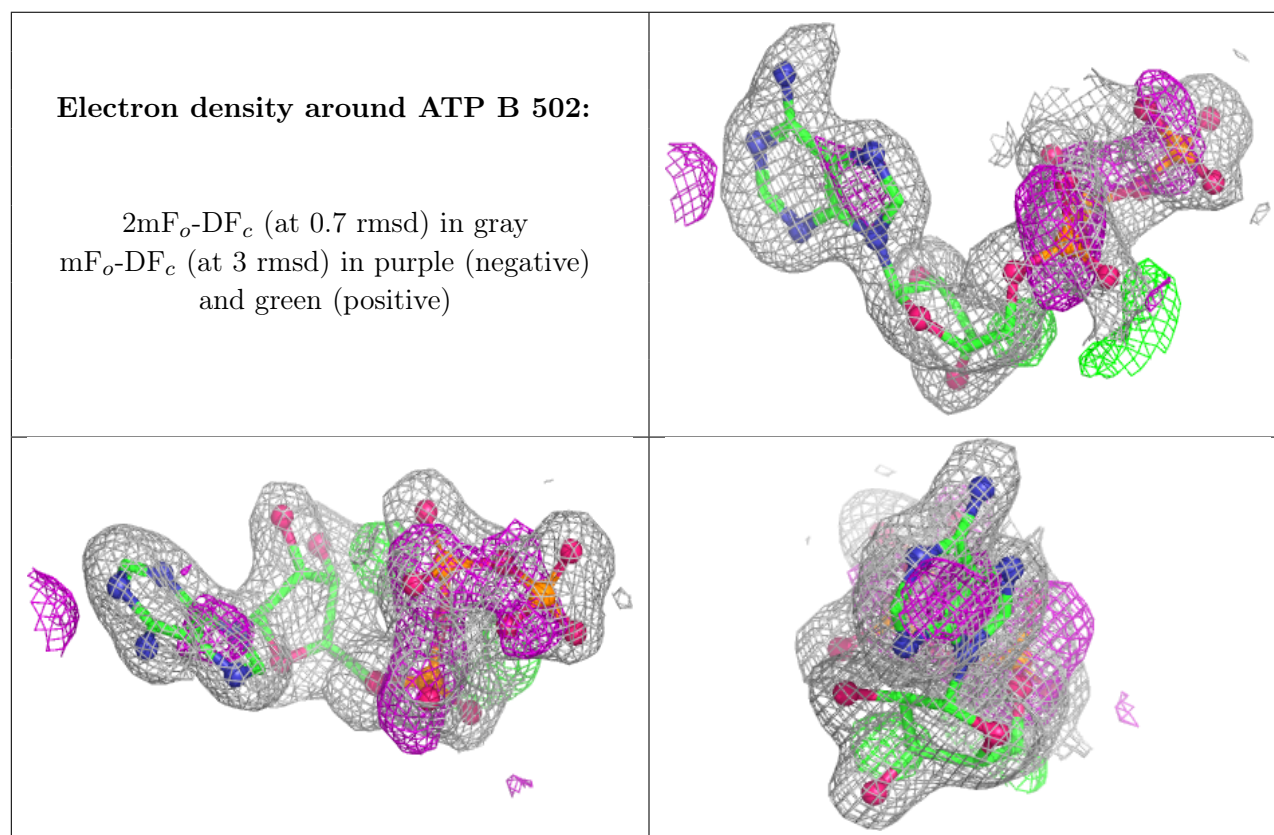
There are no oligosaccharides in this entry.

6.4 Ligands [i](#)

In the following table, the Atoms column lists the number of modelled atoms in the group and the number defined in the chemical component dictionary. The B-factors column lists the minimum, median, 95th percentile and maximum values of B factors of atoms in the group. The column labelled 'Q< 0.9' lists the number of atoms with occupancy less than 0.9.

Mol	Type	Chain	Res	Atoms	RSCC	RSR	B-factors(Å ²)	Q<0.9
4	ATP	B	502	31/31	0.92	0.09	21,31,40,46	0
3	ZN	B	501	1/1	0.98	0.04	29,29,29,29	0
5	MG	B	503	1/1	0.99	0.09	36,36,36,36	0

The following is a graphical depiction of the model fit to experimental electron density of all instances of the Ligand of Interest. In addition, ligands with molecular weight > 250 and outliers as shown on the geometry validation Tables will also be included. Each fit is shown from different orientation to approximate a three-dimensional view.



6.5 Other polymers [i](#)

There are no such residues in this entry.