



Full wwPDB EM Validation Report ⓘ

Jun 29, 2026 – 10:22 AM EDT

PDB ID : 9Z40 / pdb_00009z40
EMDB ID : EMD-73797
Title : Cryo-EM structure of full-length human NM2B
Authors : Heissler, S.M.; Chinthalapudi, K.C.
Deposited on : 2025-11-08
Resolution : 10.00 Å(reported)
Based on initial model : .

This is a Full wwPDB EM Validation Report for a publicly released PDB entry.

We welcome your comments at validation@mail.wwpdb.org

A user guide is available at

<https://www.wwpdb.org/validation/2017/EMValidationReportHelp>

with specific help available everywhere you see the ⓘ symbol.

The types of validation reports are described at

<http://www.wwpdb.org/validation/2017/FAQs#types>.

The following versions of software and data (see [references ⓘ](#)) were used in the production of this report:

EMDB validation analysis : 0.0.1.dev133
Mogul : 2022.3.0, CSD as543be (2022)
MolProbity : 4-5-2 with Phenix2.0
Buster-report : wwPDB partial adaption of 1.1.7 (2018)
Percentile statistics : 20250101.v01 (using entries in the PDB archive January 1st 2025)
EM percentile statistics : 202505.v01 (Using data in the EMDB archive up until May 2025)
MapQ : 1.9.13
Ideal geometry (proteins) : Engh & Huber (2001)
Ideal geometry (DNA, RNA) : Parkinson et al. (1996)
Validation Pipeline (wwPDB-VP) : 2.50

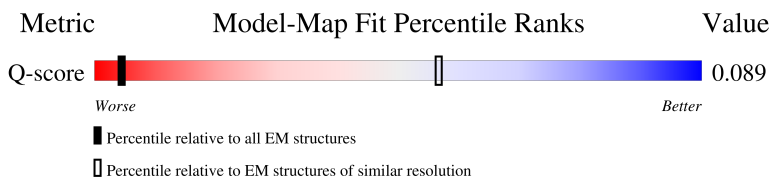
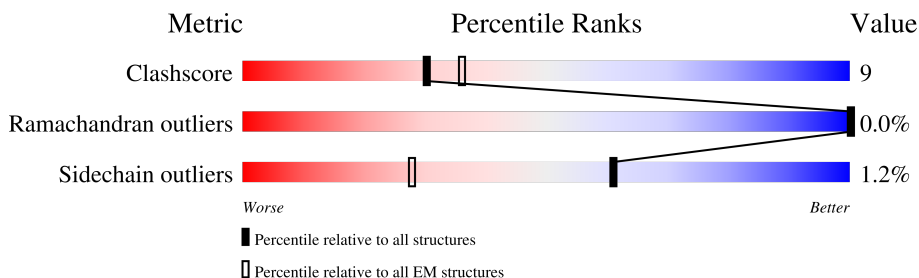
1 Overall quality at a glance i

The following experimental techniques were used to determine the structure:

ELECTRON MICROSCOPY

The reported resolution of this entry is 10.00 Å.

Percentile scores (ranging between 0-100) for global validation metrics of the entry are shown in the following graphic. The table shows the number of entries on which the scores are based.



Metric	Whole archive (#Entries)	EM structures (#Entries)	Similar EM resolution (#Entries, resolution range(Å))
Clashscore	229148	23984	-
Ramachandran outliers	224038	23583	-
Sidechain outliers	223484	23102	-
Q-score	-	25397	147 (9.50 - 10.50)

The table below summarises the geometric issues observed across the polymeric chains and their fit to the map. The red, orange, yellow and green segments of the bar indicate the fraction of residues that contain outliers for ≥ 3 , 2, 1 and 0 types of geometric quality criteria respectively. A grey segment represents the fraction of residues that are not modelled. The numeric value for each fraction is indicated below the corresponding segment, with a dot representing fractions $\leq 5\%$. The upper red bar (where present) indicates the fraction of residues that have poor fit to the EM map (all-atom inclusion $< 40\%$). The numeric value is given above the bar.

Mol	Chain	Length	Quality of chain
1	A	1976	 78% 16% 5%
1	B	1976	 76% 19% 5%
2	C	151	 75% 23% ..
2	F	151	 82% 17% .

Continued on next page...

Continued from previous page...

Mol	Chain	Length	Quality of chain
3	D	172	
3	E	172	

The following table lists non-polymeric compounds, carbohydrate monomers and non-standard residues in protein, DNA, RNA chains that are outliers for geometric or electron-density-fit criteria:

Mol	Type	Chain	Res	Chirality	Geometry	Clashes	Electron density
6	PO4	B	2002	-	-	X	-

2 Entry composition [i](#)

There are 6 unique types of molecules in this entry. The entry contains 35632 atoms, of which 0 are hydrogens and 0 are deuteriums.

In the tables below, the AltConf column contains the number of residues with at least one atom in alternate conformation and the Trace column contains the number of residues modelled with at most 2 atoms.

- Molecule 1 is a protein called Myosin-10.

Mol	Chain	Residues	Atoms					AltConf	Trace
			Total	C	N	O	S		
1	A	1875	Total	C	N	O	S	0	0
			15273	9469	2733	3015	56		
1	B	1879	Total	C	N	O	S	0	0
			15301	9484	2737	3023	57		

- Molecule 2 is a protein called Myosin light polypeptide 6.

Mol	Chain	Residues	Atoms					AltConf	Trace
			Total	C	N	O	S		
2	C	149	Total	C	N	O	S	0	0
			1170	730	195	237	8		
2	F	149	Total	C	N	O	S	0	0
			1170	730	195	237	8		

- Molecule 3 is a protein called Myosin regulatory light chain 12B.

Mol	Chain	Residues	Atoms					AltConf	Trace
			Total	C	N	O	S		
3	D	169	Total	C	N	O	S	0	0
			1366	854	228	275	9		
3	E	159	Total	C	N	O	S	0	0
			1286	803	212	262	9		

- Molecule 4 is MAGNESIUM ION (CCD ID: MG) (formula: Mg).

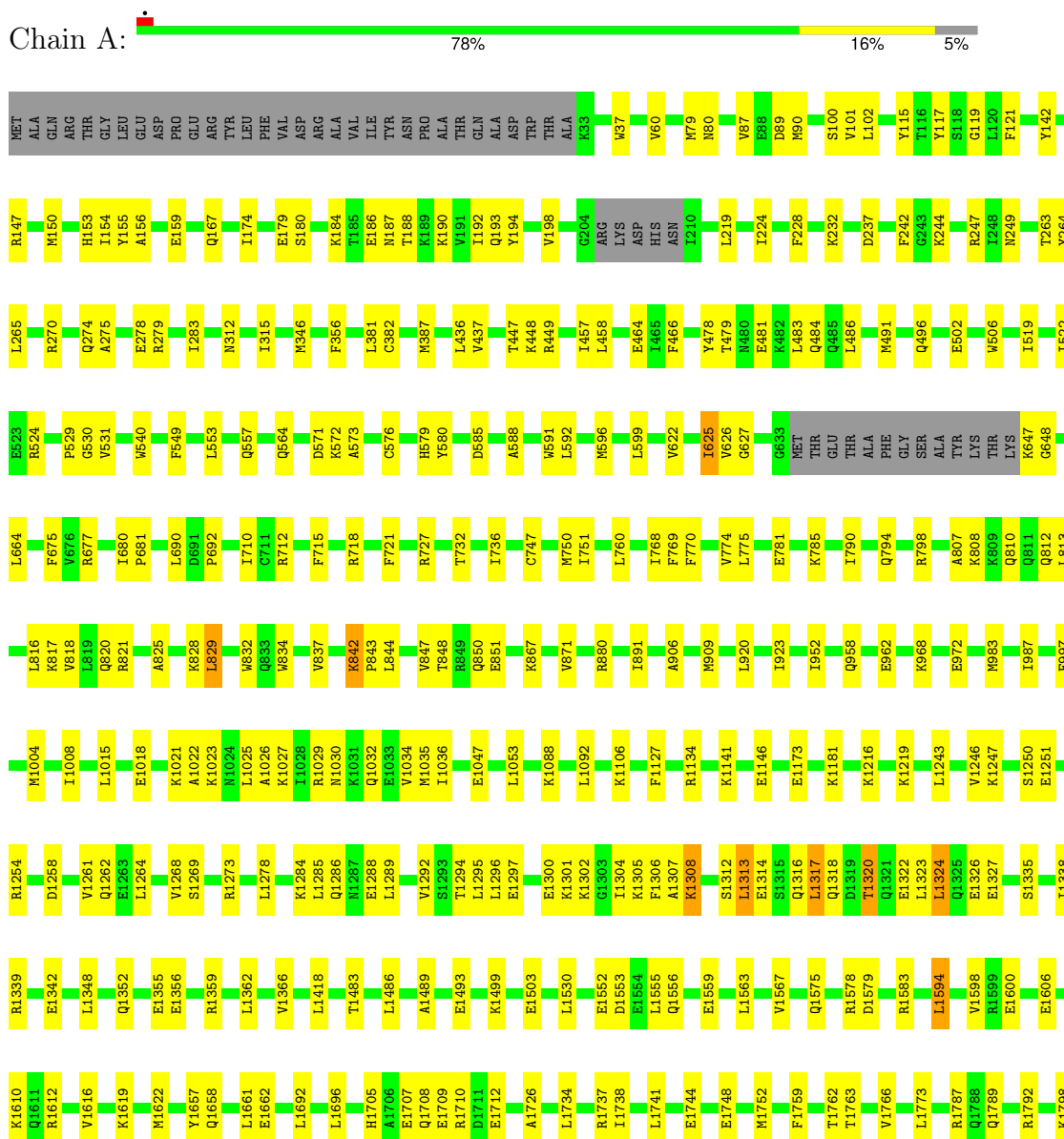
Mol	Chain	Residues	Atoms		AltConf
4	A	1	Total	Mg	0
			1	1	
4	B	1	Total	Mg	0
			1	1	

- Molecule 5 is ADENOSINE-5'-DIPHOSPHATE (CCD ID: ADP) (formula: C₁₀H₁₅N₅O₁₀P₂).

3 Residue-property plots [i](#)

These plots are drawn for all protein, RNA, DNA and oligosaccharide chains in the entry. The first graphic for a chain summarises the proportions of the various outlier classes displayed in the second graphic. The second graphic shows the sequence view annotated by issues in geometry and atom inclusion in map density. Residues are color-coded according to the number of geometric quality criteria for which they contain at least one outlier: green = 0, yellow = 1, orange = 2 and red = 3 or more. A red diamond above a residue indicates a poor fit to the EM map for this residue (all-atom inclusion < 40%). Stretches of 2 or more consecutive residues without any outlier are shown as a green connector. Residues present in the sample, but not in the model, are shown in grey.

- Molecule 1: Myosin-10



4 Experimental information

Property	Value	Source
EM reconstruction method	SINGLE PARTICLE	Depositor
Imposed symmetry	POINT, Not provided	
Number of particles used	38939	Depositor
Resolution determination method	OTHER	Depositor
CTF correction method	PHASE FLIPPING AND AMPLITUDE CORRECTION	Depositor
Microscope	TFS KRIOS	Depositor
Voltage (kV)	300	Depositor
Electron dose ($e^-/\text{\AA}^2$)	72	Depositor
Minimum defocus (nm)	1500	Depositor
Maximum defocus (nm)	3500	Depositor
Magnification	130000	Depositor
Image detector	GATAN K2 QUANTUM (4k x 4k)	Depositor
Maximum map value	0.857	Depositor
Minimum map value	-0.043	Depositor
Average map value	0.001	Depositor
Map value standard deviation	0.012	Depositor
Recommended contour level	0.074	Depositor
Map size (Å)	975.2013, 975.2013, 975.2013	wwPDB
Map dimensions	512, 512, 512	wwPDB
Map angles (°)	90.0, 90.0, 90.0	wwPDB
Pixel spacing (Å)	1.90469, 1.90469, 1.90469	Depositor

5 Model quality [i](#)

5.1 Standard geometry [i](#)

Bond lengths and bond angles in the following residue types are not validated in this section: ADP, MG, PO4

The Z score for a bond length (or angle) is the number of standard deviations the observed value is removed from the expected value. A bond length (or angle) with $|Z| > 5$ is considered an outlier worth inspection. RMSZ is the root-mean-square of all Z scores of the bond lengths (or angles).

Mol	Chain	Bond lengths		Bond angles	
		RMSZ	# Z >5	RMSZ	# Z >5
1	A	0.23	0/15433	0.41	0/20646
1	B	0.25	0/15461	0.43	0/20683
2	C	0.24	0/1188	0.40	0/1598
2	F	0.17	0/1188	0.38	0/1598
3	D	0.21	0/1390	0.42	0/1865
3	E	0.26	0/1310	0.52	0/1762
All	All	0.24	0/35970	0.42	0/48152

There are no bond length outliers.

There are no bond angle outliers.

There are no chirality outliers.

There are no planarity outliers.

5.2 Too-close contacts [i](#)

In the following table, the Non-H and H(model) columns list the number of non-hydrogen atoms and hydrogen atoms in the chain respectively. The H(added) column lists the number of hydrogen atoms added and optimized by MolProbity. The Clashes column lists the number of clashes within the asymmetric unit, whereas Symm-Clashes lists symmetry-related clashes.

Mol	Chain	Non-H	H(model)	H(added)	Clashes	Symm-Clashes
1	A	15273	0	15393	293	0
1	B	15301	0	15418	357	0
2	C	1170	0	1122	28	0
2	F	1170	0	1122	19	0
3	D	1366	0	1310	50	0
3	E	1286	0	1206	68	0
4	A	1	0	0	0	0

Continued on next page...

Continued from previous page...

Mol	Chain	Non-H	H(model)	H(added)	Clashes	Symm-Clashes
4	B	1	0	0	0	0
5	A	27	0	12	2	0
5	B	27	0	12	3	0
6	A	5	0	0	1	0
6	B	5	0	0	2	0
All	All	35632	0	35595	640	0

The all-atom clashscore is defined as the number of clashes found per 1000 atoms (including hydrogen atoms). The all-atom clashscore for this structure is 9.

All (640) close contacts within the same asymmetric unit are listed below, sorted by their clash magnitude.

Atom-1	Atom-2	Interatomic distance (Å)	Clash overlap (Å)
1:B:826:TYR:HB3	3:E:162:LEU:HD22	1.35	1.05
1:A:844:LEU:HD13	3:D:32:GLU:HG2	1.39	1.04
3:E:159:THR:HA	3:E:162:LEU:HD23	1.45	0.95
1:A:1029:ARG:HB2	1:B:1029:ARG:HG2	1.47	0.94
3:E:102:ILE:HD12	3:E:162:LEU:HD21	1.56	0.88
1:A:464:GLU:OE1	1:A:466:PHE:CZ	2.28	0.87
1:B:825:ALA:HB1	3:E:96:THR:HG23	1.60	0.82
1:A:564:GLN:HB2	1:A:576:CYS:HB3	1.65	0.79
1:A:180:SER:HB2	1:A:464:GLU:OE2	1.84	0.77
1:A:464:GLU:OE1	1:A:466:PHE:CE1	2.38	0.77
1:B:816:LEU:HA	3:E:108:CYS:SG	2.25	0.77
1:B:1007:ARG:NH2	1:B:1328:THR:OG1	2.17	0.77
1:B:822:ASN:HB3	3:E:102:ILE:HG23	1.68	0.74
1:A:1489:ALA:HB1	3:D:4:LYS:HZ3	1.53	0.73
1:B:681:PRO:HB2	1:B:690:LEU:HA	1.71	0.73
1:B:1030:ASN:HB3	1:B:1747:GLU:HG3	1.71	0.73
1:A:1036:ILE:HD11	1:B:1032:GLN:O	1.88	0.73
1:A:843:PRO:HB3	3:D:39:MET:HG3	1.69	0.73
1:A:232:LYS:NZ	1:A:237:ASP:OD1	2.21	0.73
1:B:186:GLU:OE2	1:B:190:LYS:NZ	2.22	0.73
1:A:80:ASN:ND2	1:A:100:SER:OG	2.22	0.72
1:A:1555:LEU:HD11	1:B:1555:LEU:HB2	1.72	0.72
1:A:834:TRP:HA	3:D:165:GLY:HA2	1.73	0.71
1:B:827:LEU:HA	3:E:141:LEU:HD21	1.73	0.71
1:A:820:GLN:NE2	3:D:131:ASP:O	2.24	0.71
1:B:1042:ARG:HD2	1:B:1761:LYS:HD2	1.73	0.70
1:B:1331:LYS:HA	1:B:1334:LEU:HB2	1.72	0.70
1:B:1039:LEU:HD23	1:B:1042:ARG:HH21	1.57	0.69

Continued on next page...

Continued from previous page...

Atom-1	Atom-2	Interatomic distance (Å)	Clash overlap (Å)
1:B:812:GLN:NE2	3:E:111:GLU:OE2	2.26	0.69
1:A:186:GLU:OE2	1:A:190:LYS:NZ	2.26	0.68
1:A:1302:LYS:HE3	1:B:1303:GLY:HA3	1.76	0.68
3:E:109:PHE:CE1	3:E:121:TYR:HE1	2.12	0.68
3:D:28:SER:O	3:D:32:GLU:HG3	1.95	0.67
1:A:1619:LYS:HD2	1:B:1614:LEU:HB3	1.76	0.67
1:B:999:LYS:HB2	1:B:1332:LEU:HA	1.77	0.67
1:B:286:GLN:HB3	1:B:326:PHE:HB2	1.77	0.67
1:A:790:ILE:O	1:A:794:GLN:HG2	1.95	0.66
1:B:80:ASN:ND2	1:B:100:SER:OG	2.28	0.66
1:A:1032:GLN:HB2	1:B:1033:GLU:HA	1.77	0.66
1:B:1829:GLN:O	1:B:1833:GLU:HG2	1.95	0.66
1:B:235:LYS:O	1:B:685:LYS:NZ	2.23	0.66
1:B:1375:ASP:OD2	1:B:1379:LYS:NZ	2.29	0.66
1:B:827:LEU:HD12	3:E:141:LEU:HD11	1.77	0.65
1:A:187:ASN:OD1	5:A:2002:ADP:N6	2.28	0.65
1:A:1027:LYS:HG3	1:A:1305:LYS:HZ1	1.61	0.65
1:B:826:TYR:HE1	3:E:141:LEU:HD13	1.61	0.65
1:A:167:GLN:O	1:A:727:ARG:NH2	2.29	0.65
3:E:102:ILE:CD1	3:E:162:LEU:HD21	2.27	0.64
1:B:819:LEU:HB3	3:E:105:ALA:HB1	1.77	0.64
1:B:499:TYR:HH	1:B:715:PHE:H	1.45	0.64
1:A:1308:LYS:HA	1:A:1308:LYS:HZ3	1.62	0.64
1:A:184:LYS:NZ	6:A:2003:PO4:O4	2.31	0.64
1:B:1029:ARG:NH2	1:B:1743:GLU:OE1	2.31	0.64
1:A:1773:LEU:HD11	1:B:1769:LEU:HB3	1.79	0.63
1:A:816:LEU:HD13	3:D:129:MET:HG3	1.80	0.63
1:A:1250:SER:HB3	1:B:1250:SER:OG	1.98	0.63
1:A:1619:LYS:HG3	1:B:1618:SER:HB3	1.78	0.63
1:A:1773:LEU:HD21	1:B:1773:LEU:HB3	1.80	0.63
1:B:1015:LEU:HB3	1:B:1735:GLU:OE2	1.98	0.63
1:A:1302:LYS:HB2	1:B:1303:GLY:HA3	1.81	0.62
1:B:179:GLU:HB2	1:B:680:ILE:HD12	1.80	0.62
1:A:1286:GLN:NE2	1:A:1289:LEU:HD23	2.14	0.62
1:B:1521:ASP:OD1	1:B:1532:LYS:NZ	2.32	0.62
1:A:681:PRO:HB2	1:A:690:LEU:HA	1.79	0.62
1:B:235:LYS:HE3	1:B:683:HIS:CE1	2.34	0.62
1:B:499:TYR:OH	1:B:715:PHE:N	2.28	0.62
1:A:87:VAL:HG12	1:A:89:ASP:H	1.64	0.62
1:A:997:PHE:HD2	1:B:994:ASN:HB2	1.65	0.62
1:B:814:SER:O	1:B:818:VAL:HG23	2.00	0.61

Continued on next page...

Continued from previous page...

Atom-1	Atom-2	Interatomic distance (Å)	Clash overlap (Å)
1:B:1416:ASP:OD2	1:B:1420:LYS:NZ	2.33	0.61
1:B:826:TYR:CB	3:E:162:LEU:HD22	2.21	0.61
1:A:828:LYS:HG3	1:A:829:LEU:HG	1.82	0.61
1:A:1146:GLU:OE2	1:A:1181:LYS:NZ	2.34	0.60
3:E:31:GLN:OE1	3:E:31:GLN:HA	2.01	0.60
1:A:153:HIS:HB3	1:A:156:ALA:H	1.66	0.60
1:A:818:VAL:HB	1:A:1567:VAL:HG22	1.82	0.60
1:B:233:THR:HG23	1:B:236:ASN:H	1.66	0.60
1:B:789:ILE:HG21	2:F:92:GLY:HA3	1.83	0.60
1:B:1584:ASP:HA	1:B:1587:ASN:ND2	2.17	0.60
1:B:841:VAL:CG1	3:E:32:GLU:HB3	2.32	0.59
1:A:1243:LEU:HA	1:B:1246:VAL:HG21	1.85	0.59
1:A:1286:GLN:HE22	1:A:1289:LEU:HD23	1.67	0.59
1:B:115:TYR:CE1	1:B:154:ILE:HB	2.38	0.59
1:B:822:ASN:OD1	3:E:97:ASP:HB2	2.02	0.59
1:B:826:TYR:HA	3:E:162:LEU:HD13	1.84	0.59
1:A:1015:LEU:HB2	1:A:1313:LEU:HD13	1.84	0.59
1:B:998:ILE:HG13	1:B:999:LYS:HG2	1.85	0.59
3:E:37:PHE:HA	3:E:40:ILE:HG22	1.85	0.58
1:A:837:VAL:HG21	3:D:164:HIS:HA	1.86	0.58
1:A:1316:GLN:O	1:B:1014:GLN:HG2	2.03	0.58
1:B:1337:ARG:O	1:B:1341:LEU:HB3	2.03	0.58
3:D:59:SER:HB3	3:E:18:THR:H	1.69	0.58
3:E:143:ARG:NH1	3:E:144:GLU:OE2	2.37	0.58
1:A:1552:GLU:HG3	1:A:1556:GLN:HE21	1.67	0.58
1:B:1330:GLN:O	1:B:1334:LEU:HG	2.04	0.58
1:B:1072:ALA:HB1	1:B:1256:LYS:HA	1.86	0.58
1:A:715:PHE:CB	1:A:769:PHE:HB3	2.34	0.57
1:B:71:VAL:HG12	1:B:72:ASN:H	1.69	0.57
1:B:996:LYS:HA	1:B:1332:LEU:HD11	1.85	0.57
1:A:1789:GLN:O	1:A:1792:ARG:HG2	2.04	0.57
1:B:1090:GLU:HG2	1:B:1238:CYS:HB3	1.84	0.57
1:B:102:LEU:HD11	1:B:692:PRO:HB3	1.85	0.57
1:B:840:LYS:HB3	3:E:36:ALA:HB1	1.86	0.57
3:E:117:ILE:HD13	3:E:122:LEU:HD21	1.86	0.57
1:A:834:TRP:H	1:A:834:TRP:CD1	2.22	0.57
1:A:1598:VAL:HG22	1:B:1598:VAL:HG23	1.87	0.56
3:E:64:PRO:HG2	3:E:69:LEU:HD21	1.87	0.56
1:A:1032:GLN:HG3	1:B:1033:GLU:HG3	1.86	0.56
1:A:1338:ILE:HD11	1:B:1334:LEU:O	2.05	0.56
1:A:1035:MET:HB2	1:B:1036:ILE:HG21	1.87	0.56

Continued on next page...

Continued from previous page...

Atom-1	Atom-2	Interatomic distance (Å)	Clash overlap (Å)
1:B:233:THR:OG1	1:B:234:VAL:N	2.39	0.56
1:B:488:ASN:HB3	1:B:513:LEU:HB3	1.87	0.56
1:B:820:GLN:HE22	3:E:129:MET:HE1	1.71	0.56
1:B:1848:GLU:OE1	1:B:1852:LYS:NZ	2.36	0.56
1:B:232:LYS:NZ	1:B:237:ASP:OD1	2.39	0.56
1:B:1036:ILE:HA	1:B:1039:LEU:HD12	1.88	0.56
1:A:274:GLN:HE21	1:A:279:ARG:HA	1.70	0.56
1:A:1752:MET:HG3	1:B:1751:ASN:HB3	1.87	0.55
1:A:983:MET:O	1:A:987:ILE:HG13	2.06	0.55
1:A:1553:ASP:OD1	3:D:19:SER:OG	2.18	0.55
2:C:110:ARG:HA	2:C:125:VAL:HG11	1.89	0.55
3:E:99:GLU:HA	3:E:102:ILE:HG13	1.87	0.55
3:E:99:GLU:HG3	3:E:163:LYS:HG3	1.87	0.55
1:A:448:LYS:NZ	1:A:1600:GLU:OE1	2.39	0.55
2:C:4:PHE:HE1	3:D:4:LYS:HG2	1.71	0.55
1:A:821:ARG:HH22	3:D:12:LYS:HD2	1.72	0.55
1:A:818:VAL:HA	1:A:821:ARG:HD2	1.88	0.55
3:D:37:PHE:HA	3:D:40:ILE:HG12	1.88	0.55
1:A:1030:ASN:O	1:A:1034:VAL:HG23	2.07	0.54
1:B:1072:ALA:HB1	1:B:1256:LYS:HG2	1.88	0.54
2:C:3:ASP:O	2:C:75:GLN:NE2	2.40	0.54
1:B:402:LYS:NZ	1:B:935:GLU:OE1	2.37	0.54
1:B:466:PHE:HE1	1:B:473:GLN:CD	2.15	0.54
1:A:1307:ALA:HB2	1:B:1306:PHE:CE1	2.42	0.54
3:D:21:VAL:HA	3:D:24:MET:HG2	1.88	0.54
1:B:1068:GLN:HG2	1:B:1263:GLU:HB3	1.89	0.54
1:A:1308:LYS:HE2	1:B:1025:LEU:HD23	1.89	0.54
1:B:1264:LEU:O	1:B:1268:VAL:HG23	2.07	0.54
1:B:1351:GLN:O	1:B:1355:GLU:HG2	2.07	0.54
1:B:1007:ARG:HD3	1:B:1007:ARG:N	2.23	0.54
2:C:67:PHE:CD2	3:D:3:LYS:HE3	2.42	0.54
3:D:31:GLN:HG3	3:D:35:GLU:OE2	2.08	0.54
1:B:478:TYR:CE1	1:B:519:ILE:HG23	2.43	0.54
1:B:819:LEU:CA	3:E:105:ALA:HB1	2.38	0.54
1:B:1735:GLU:OE1	1:B:1735:GLU:N	2.36	0.54
3:E:50:LYS:HG3	3:E:69:LEU:HB3	1.90	0.54
1:B:822:ASN:HD21	3:E:101:VAL:HG12	1.73	0.54
1:A:242:PHE:CE2	1:A:244:LYS:HB2	2.43	0.54
1:B:1030:ASN:HB3	1:B:1747:GLU:CG	2.38	0.54
1:A:37:TRP:CD1	1:A:79:MET:HA	2.43	0.53
3:E:117:ILE:CD1	3:E:155:TYR:HB2	2.37	0.53

Continued on next page...

Continued from previous page...

Atom-1	Atom-2	Interatomic distance (Å)	Clash overlap (Å)
1:A:89:ASP:HA	1:A:117:TYR:HB2	1.90	0.53
1:B:999:LYS:HE3	1:B:1336:SER:N	2.23	0.53
1:A:159:GLU:HB2	1:A:194:TYR:CZ	2.44	0.53
1:A:247:ARG:NH1	1:A:249:ASN:OD1	2.39	0.53
1:A:529:PRO:O	1:A:557:GLN:NE2	2.41	0.53
1:A:1088:LYS:HG2	1:B:1085:LEU:HG	1.89	0.53
1:B:265:LEU:HD13	1:B:475:CYS:HB3	1.89	0.53
1:A:1026:ALA:HB3	1:A:1305:LYS:HG3	1.91	0.53
3:E:96:THR:HG22	3:E:163:LYS:NZ	2.24	0.53
1:A:524:ARG:O	1:A:530:GLY:N	2.42	0.53
1:A:1773:LEU:CD1	1:B:1769:LEU:HB3	2.38	0.53
1:B:130:ASN:OD1	5:B:2001:ADP:O2'	2.27	0.53
1:B:564:GLN:O	1:B:576:CYS:HB2	2.08	0.53
1:A:1278:LEU:HD13	1:B:1279:ALA:HB2	1.91	0.53
1:B:302:GLU:OE2	1:B:380:LYS:NZ	2.35	0.53
1:A:1018:GLU:HG3	1:A:1308:LYS:HB3	1.90	0.53
1:A:1661:LEU:CD1	1:B:1657:TYR:HB3	2.39	0.53
1:B:1030:ASN:ND2	1:B:1033:GLU:OE1	2.42	0.52
1:A:1264:LEU:O	1:A:1268:VAL:HG23	2.09	0.52
1:B:1527:VAL:HG23	1:B:1528:HIS:CD2	2.45	0.52
1:A:522:ILE:HG13	1:A:531:VAL:HG22	1.91	0.52
1:A:813:LEU:HD13	3:D:129:MET:HE3	1.92	0.52
1:A:1338:ILE:HD11	1:B:1334:LEU:HA	1.90	0.52
1:A:1141:LYS:NZ	1:B:1860:ASP:OD1	2.42	0.52
1:A:1744:GLU:HB3	1:B:1745:LEU:HD13	1.91	0.52
1:B:822:ASN:OD1	3:E:102:ILE:HG12	2.10	0.52
1:B:1812:PHE:CE1	1:B:1816:ILE:HG21	2.45	0.52
1:A:923:ILE:HG21	1:B:920:LEU:HD22	1.92	0.52
1:B:1006:ASP:HB3	1:B:1007:ARG:HH11	1.73	0.52
1:A:356:PHE:CE1	1:A:381:LEU:HD21	2.45	0.51
1:A:1362:LEU:O	1:A:1366:VAL:HG23	2.11	0.51
1:A:1308:LYS:HE3	1:B:1022:ALA:HA	1.92	0.51
1:B:121:PHE:CZ	1:B:704:VAL:HA	2.45	0.51
1:B:999:LYS:HD2	1:B:1002:LYS:HD2	1.91	0.51
1:A:1493:GLU:HG2	3:D:4:LYS:NZ	2.25	0.51
1:A:1313:LEU:HD12	1:B:1317:LEU:HG	1.92	0.51
1:A:1622:MET:HE1	1:B:1619:LYS:HG3	1.93	0.51
1:A:502:GLU:HG3	1:A:769:PHE:CZ	2.45	0.51
1:B:1263:GLU:OE2	1:B:1267:LYS:NZ	2.35	0.51
2:C:16:PHE:HB2	2:C:67:PHE:HE1	1.75	0.51
1:B:1793:GLN:O	1:B:1797:LEU:HG	2.11	0.51

Continued on next page...

Continued from previous page...

Atom-1	Atom-2	Interatomic distance (Å)	Clash overlap (Å)
3:E:142:TYR:HA	3:E:145:ALA:HB3	1.91	0.51
1:A:798:ARG:NH2	2:C:119:LYS:O	2.44	0.51
2:C:16:PHE:CE1	2:C:35:VAL:HG11	2.46	0.51
1:B:264:TYR:HD2	1:B:265:LEU:HG	1.75	0.51
1:B:382:CYS:HB3	1:B:387:MET:O	2.10	0.51
1:B:794:GLN:NE2	2:F:113:LEU:O	2.43	0.51
1:B:812:GLN:NE2	3:E:108:CYS:O	2.43	0.51
1:A:1707:GLU:O	1:A:1710:ARG:HG2	2.11	0.50
2:C:9:THR:HG22	2:C:10:ALA:N	2.25	0.50
1:A:813:LEU:HD11	1:A:817:LYS:HE3	1.93	0.50
1:B:841:VAL:HG13	3:E:32:GLU:HB3	1.92	0.50
1:A:115:TYR:OH	5:A:2002:ADP:N6	2.40	0.50
1:A:1021:LYS:HG2	1:B:1740:GLN:HE21	1.77	0.50
1:B:1039:LEU:HD23	1:B:1042:ARG:NH2	2.25	0.50
1:A:1284:LYS:NZ	1:A:1288:GLU:OE2	2.43	0.50
3:E:153:PHE:HZ	3:E:158:PHE:CD2	2.30	0.50
1:A:458:LEU:HD22	1:A:664:LEU:HD21	1.92	0.50
1:A:747:CYS:SG	1:A:768:ILE:HD11	2.52	0.50
1:A:1759:PHE:CD1	1:B:1759:PHE:HB2	2.47	0.50
1:B:999:LYS:HD2	1:B:1335:SER:HB3	1.93	0.50
1:B:801:LEU:HD13	2:F:124:GLU:HB3	1.93	0.50
1:B:1042:ARG:HG2	1:B:1758:ARG:HG2	1.94	0.50
1:A:1619:LYS:NZ	1:B:1614:LEU:O	2.42	0.50
1:A:1708:GLN:O	1:A:1712:GLU:HG2	2.11	0.49
3:E:117:ILE:HD11	3:E:155:TYR:HB2	1.93	0.49
1:A:712:ARG:HB3	1:B:1434:VAL:HG11	1.94	0.49
1:A:832:TRP:HZ3	3:D:72:MET:SD	2.36	0.49
1:B:159:GLU:HB2	1:B:194:TYR:OH	2.11	0.49
3:E:96:THR:HG22	3:E:163:LYS:HZ3	1.77	0.49
1:B:818:VAL:O	1:B:822:ASN:ND2	2.45	0.49
1:B:877:GLU:OE1	1:B:881:LYS:NZ	2.45	0.49
2:C:27:ILE:HB	2:C:70:PHE:CZ	2.47	0.49
1:A:1483:THR:HG21	2:C:69:HIS:CE1	2.47	0.49
1:A:1579:ASP:O	1:A:1583:ARG:HG2	2.12	0.49
1:B:180:SER:O	1:B:235:LYS:HE2	2.13	0.49
1:B:239:SER:OG	1:B:241:ARG:NH2	2.44	0.49
1:B:400:ARG:HB3	1:B:407:TYR:HB3	1.95	0.49
1:B:405:ARG:H	1:B:936:GLU:HB2	1.77	0.49
1:A:958:GLN:O	1:A:962:GLU:HG2	2.12	0.49
1:A:1486:LEU:HD23	2:C:68:GLU:HA	1.93	0.49
2:F:51:VAL:HG11	2:F:77:VAL:HG13	1.93	0.49

Continued on next page...

Continued from previous page...

Atom-1	Atom-2	Interatomic distance (Å)	Clash overlap (Å)
1:B:71:VAL:HG12	1:B:72:ASN:N	2.27	0.49
1:B:134:TYR:OH	5:B:2001:ADP:N1	2.28	0.49
1:B:1034:VAL:HG11	1:B:1747:GLU:O	2.12	0.49
1:A:647:LYS:HE3	1:B:912:ARG:HH12	1.78	0.49
1:A:481:GLU:OE2	1:A:579:HIS:ND1	2.44	0.49
1:A:732:THR:HG21	1:A:750:MET:HB3	1.95	0.49
1:A:1254:ARG:HG3	1:B:1257:LEU:HD23	1.94	0.49
1:B:179:GLU:HB2	1:B:680:ILE:CD1	2.42	0.49
1:A:155:TYR:CD1	1:A:194:TYR:HB2	2.48	0.49
1:A:263:THR:OG1	1:A:437:VAL:HG21	2.12	0.49
1:A:479:THR:O	1:A:483:LEU:HG	2.13	0.49
1:B:841:VAL:HG11	3:E:32:GLU:HB3	1.94	0.49
1:B:1018:GLU:HA	1:B:1021:LYS:HD2	1.95	0.49
1:A:180:SER:CB	1:A:464:GLU:OE2	2.59	0.48
1:A:1312:SER:HA	1:B:1018:GLU:HG2	1.95	0.48
1:A:1355:GLU:OE1	1:B:1356:GLU:HA	2.13	0.48
2:F:29:TYR:CE1	2:F:65:LEU:HB2	2.47	0.48
1:A:1356:GLU:O	1:A:1359:ARG:HG2	2.12	0.48
1:A:1530:LEU:HB3	1:B:1530:LEU:H	1.78	0.48
1:B:72:ASN:O	1:B:74:ASP:N	2.47	0.48
1:B:188:THR:HG21	1:B:459:ASP:HB2	1.94	0.48
1:B:248:ILE:HD11	1:B:457:ILE:HD11	1.95	0.48
1:B:1026:ALA:O	1:B:1743:GLU:HG2	2.13	0.48
1:A:715:PHE:HB2	1:A:769:PHE:HB3	1.95	0.48
1:A:867:LYS:O	1:A:871:VAL:HG23	2.12	0.48
1:A:1657:TYR:O	1:A:1661:LEU:HG	2.14	0.48
1:B:525:PRO:HA	1:B:533:ALA:HB2	1.95	0.48
1:A:843:PRO:HB3	3:D:39:MET:CG	2.40	0.48
1:A:115:TYR:CE1	1:A:154:ILE:HB	2.48	0.48
3:D:4:LYS:O	3:D:4:LYS:HG3	2.14	0.48
2:F:4:PHE:CD2	2:F:71:LEU:HB3	2.48	0.48
1:A:736:ILE:HD11	1:A:750:MET:SD	2.53	0.48
1:B:48:ALA:HB2	1:B:62:LEU:HD23	1.96	0.48
1:B:223:PRO:HA	1:B:226:GLU:HB2	1.96	0.48
1:B:435:TRP:CZ2	1:B:439:ARG:HG2	2.48	0.48
1:B:819:LEU:N	3:E:105:ALA:HB1	2.29	0.48
1:B:1086:ALA:O	1:B:1089:GLU:HB2	2.13	0.48
3:D:71:ALA:C	3:D:72:MET:HE2	2.39	0.48
1:A:808:LYS:HB3	1:A:1578:ARG:NH2	2.28	0.48
1:A:952:ILE:HD11	1:B:1663:GLU:HG2	1.94	0.48
1:A:1555:LEU:O	1:A:1559:GLU:HB3	2.14	0.47

Continued on next page...

Continued from previous page...

Atom-1	Atom-2	Interatomic distance (Å)	Clash overlap (Å)
1:B:1034:VAL:HG22	1:B:1751:ASN:ND2	2.28	0.47
2:C:51:VAL:HG11	2:C:77:VAL:HB	1.96	0.47
1:B:915:ALA:HB1	1:B:1631:ALA:N	2.29	0.47
1:B:1257:LEU:O	1:B:1261:VAL:HG23	2.14	0.47
1:A:1018:GLU:HB2	1:B:1732:ARG:NH2	2.29	0.47
1:A:1173:GLU:OE1	1:B:1159:LEU:HD11	2.15	0.47
1:A:1289:LEU:HA	1:A:1292:VAL:HG12	1.95	0.47
1:B:1042:ARG:HH22	1:B:1754:LEU:HG	1.79	0.47
1:B:1678:SER:O	1:B:1682:LEU:HG	2.15	0.47
1:B:1072:ALA:C	1:B:1256:LYS:HG2	2.39	0.47
3:E:106:PHE:HB2	3:E:155:TYR:CE1	2.49	0.47
1:A:1216:LYS:HG3	1:B:1218:PHE:CG	2.49	0.47
1:A:1869:LYS:NZ	1:A:1873:GLU:OE2	2.47	0.47
1:B:307:TYR:CE1	1:B:354:LEU:HG	2.49	0.47
1:B:1137:ALA:HA	1:B:1140:GLN:OE1	2.15	0.47
1:A:275:ALA:O	1:A:312:ASN:ND2	2.47	0.47
1:A:820:GLN:HE21	3:D:133:PHE:HE1	1.63	0.47
1:A:1327:GLU:OE1	1:B:1331:LYS:NZ	2.47	0.47
1:A:1335:SER:O	1:A:1339:ARG:HG2	2.14	0.47
1:A:1798:LYS:O	1:A:1801:LEU:HG	2.14	0.47
1:B:155:TYR:CD1	1:B:194:TYR:HB2	2.50	0.47
1:B:219:LEU:HD21	1:B:248:ILE:HG23	1.95	0.47
1:B:1111:LYS:NZ	1:B:1115:GLU:OE2	2.44	0.47
1:B:1334:LEU:O	1:B:1338:ILE:HG13	2.15	0.47
1:B:1869:LYS:NZ	1:B:1873:GLU:OE2	2.46	0.47
2:C:32:CYS:O	2:C:35:VAL:HG12	2.15	0.47
3:D:124:GLU:O	3:D:128:THR:OG1	2.30	0.47
2:F:90:VAL:CG2	2:F:145:VAL:HG11	2.45	0.47
1:B:1011:CYS:O	1:B:1014:GLN:NE2	2.47	0.47
2:C:27:ILE:HB	2:C:70:PHE:CE2	2.50	0.47
3:E:84:MET:O	3:E:88:MET:HG2	2.15	0.47
1:A:1300:GLU:O	1:A:1304:ILE:HG13	2.15	0.47
2:C:108:GLU:O	2:C:112:VAL:HG23	2.15	0.47
1:A:1308:LYS:CE	1:B:1025:LEU:HB3	2.44	0.46
1:A:119:GLY:O	1:A:147:ARG:NH2	2.47	0.46
1:B:1744:GLU:O	1:B:1747:GLU:HB2	2.15	0.46
3:E:31:GLN:NE2	3:E:35:GLU:OE2	2.47	0.46
1:A:821:ARG:HH22	3:D:12:LYS:CD	2.28	0.46
1:B:174:ILE:O	1:B:457:ILE:HA	2.16	0.46
1:A:837:VAL:HG21	3:D:164:HIS:CA	2.44	0.46
1:B:212:GLY:O	1:B:216:ARG:N	2.47	0.46

Continued on next page...

Continued from previous page...

Atom-1	Atom-2	Interatomic distance (Å)	Clash overlap (Å)
1:B:725:ARG:HD2	1:B:740:PHE:CE1	2.50	0.46
3:E:17:ALA:HA	3:E:83:THR:HB	1.97	0.46
1:A:813:LEU:O	1:A:813:LEU:HD12	2.16	0.46
1:A:968:LYS:NZ	1:A:972:GLU:OE2	2.48	0.46
1:A:1023:LYS:HA	1:A:1305:LYS:HG2	1.97	0.46
1:A:1246:VAL:HG21	1:B:1246:VAL:HG23	1.98	0.46
1:B:1077:GLN:OE1	1:B:1077:GLN:N	2.44	0.46
1:A:1127:PHE:HE2	1:B:1123:LEU:HB3	1.81	0.46
1:A:1292:VAL:HA	1:A:1295:LEU:HD12	1.98	0.46
1:A:1348:LEU:HD11	1:B:1348:LEU:HB3	1.97	0.46
1:B:395:ALA:O	1:B:399:PRO:HB3	2.15	0.46
1:B:842:LYS:HD3	3:E:164:HIS:HB3	1.96	0.46
1:A:721:PHE:CE1	1:A:768:ILE:HG12	2.51	0.46
1:A:812:GLN:HB3	3:D:109:PHE:CZ	2.50	0.46
1:A:834:TRP:HA	3:D:165:GLY:CA	2.44	0.46
1:A:549:PHE:CZ	1:A:553:LEU:HD11	2.50	0.46
1:A:1219:LYS:HB3	1:B:1218:PHE:O	2.16	0.46
1:B:1038:ASP:OD2	1:B:1751:ASN:HA	2.15	0.46
1:B:1740:GLN:HA	1:B:1743:GLU:OE1	2.16	0.46
1:A:1493:GLU:HG2	3:D:4:LYS:HZ1	1.80	0.46
1:A:1705:HIS:O	1:A:1709:GLU:HG3	2.16	0.46
1:A:1822:LYS:HE3	1:A:1826:LEU:HD11	1.97	0.46
3:D:164:HIS:O	3:D:164:HIS:ND1	2.49	0.46
1:B:1003:LEU:HD23	1:B:1331:LYS:HD3	1.98	0.46
1:B:1452:LYS:O	1:B:1456:LEU:HG	2.15	0.46
1:A:382:CYS:SG	1:A:387:MET:HG3	2.56	0.45
1:A:1348:LEU:HD22	1:B:1349:GLN:HB2	1.98	0.45
1:B:478:TYR:HE1	1:B:519:ILE:HG23	1.78	0.45
1:B:802:ALA:HB1	2:F:38:ALA:HB2	1.98	0.45
1:B:809:LYS:HB2	2:F:18:LEU:HD21	1.97	0.45
1:B:115:TYR:CD1	1:B:124:VAL:HG22	2.51	0.45
1:B:478:TYR:CE2	1:B:482:LYS:HD2	2.51	0.45
2:C:97:ASP:HA	2:C:104:VAL:HG22	1.98	0.45
1:A:264:TYR:CD2	1:A:265:LEU:HG	2.52	0.45
1:A:625:ILE:HG22	1:A:626:VAL:H	1.79	0.45
1:B:1007:ARG:HD2	1:B:1010:GLU:OE1	2.16	0.45
1:B:1749:GLN:HA	1:B:1752:MET:HE2	1.98	0.45
1:B:1770:ASN:O	1:B:1773:LEU:HG	2.16	0.45
1:A:1763:THR:HG23	1:B:1045:LYS:HG2	1.99	0.45
1:B:1004:MET:O	1:B:1008:ILE:HG13	2.17	0.45
3:D:33:PHE:HE1	3:D:89:PHE:CE1	2.35	0.45

Continued on next page...

Continued from previous page...

Atom-1	Atom-2	Interatomic distance (Å)	Clash overlap (Å)
1:A:1021:LYS:HZ3	1:A:1025:LEU:HD11	1.82	0.45
1:A:1352:GLN:HG3	1:B:1355:GLU:HG3	1.97	0.45
1:A:1759:PHE:CG	1:B:1759:PHE:HB2	2.51	0.45
1:B:287:LEU:HA	1:B:326:PHE:CE1	2.51	0.45
1:B:382:CYS:SG	1:B:389:VAL:HA	2.57	0.45
1:B:478:TYR:OH	1:B:523:GLU:HB2	2.17	0.45
1:B:1076:ALA:HA	1:B:1252:HIS:CD2	2.52	0.45
1:A:179:GLU:HB2	1:A:680:ILE:HD12	1.98	0.45
1:A:842:LYS:HD2	3:E:22:PHE:CZ	2.51	0.45
1:A:1106:LYS:HG2	1:B:1109:ALA:HB2	1.98	0.45
1:B:181:GLY:N	6:B:2002:PO4:O2	2.45	0.45
1:B:184:LYS:NZ	1:B:460:ILE:O	2.49	0.45
1:A:491:MET:O	1:A:710:ILE:HD13	2.16	0.45
1:A:496:GLN:HG2	1:A:506:TRP:NE1	2.32	0.45
1:A:1696:LEU:HB2	1:B:1696:LEU:CD1	2.47	0.45
1:B:1034:VAL:HG13	1:B:1751:ASN:OD1	2.17	0.45
2:C:104:VAL:HG23	2:C:141:TYR:CD2	2.51	0.45
1:A:1844:VAL:HG12	1:B:1843:LEU:HD22	1.99	0.45
1:B:478:TYR:CZ	1:B:482:LYS:HD2	2.52	0.45
1:B:506:TRP:NE1	1:B:714:GLY:HA2	2.31	0.45
1:B:818:VAL:HG12	3:E:105:ALA:HB2	1.99	0.45
1:B:990:LEU:O	1:B:994:ASN:ND2	2.50	0.45
1:B:1090:GLU:HA	1:B:1238:CYS:SG	2.57	0.45
1:A:1034:VAL:HG22	1:A:1297:GLU:HB2	1.99	0.44
1:B:1020:GLU:HA	1:B:1023:LYS:HE3	1.98	0.44
2:F:30:SER:N	2:F:60:MET:O	2.50	0.44
1:A:382:CYS:HB3	1:A:387:MET:O	2.17	0.44
1:A:522:ILE:HG13	1:A:531:VAL:CG2	2.46	0.44
1:A:880:ARG:HD3	1:B:1595:ILE:HG13	2.00	0.44
1:A:1317:LEU:HD22	1:A:1317:LEU:HA	1.84	0.44
1:B:1038:ASP:OD2	1:B:1754:LEU:HB3	2.17	0.44
1:A:121:PHE:HB3	1:A:675:PHE:HB2	1.98	0.44
1:A:760:LEU:HB3	1:A:774:VAL:HG21	1.98	0.44
1:B:37:TRP:CZ3	1:B:47:ALA:HB2	2.52	0.44
3:E:40:ILE:HG23	3:E:48:ILE:HG21	1.98	0.44
1:A:232:LYS:HG3	1:A:237:ASP:HA	1.99	0.44
1:A:270:ARG:HH22	1:A:278:GLU:HB3	1.81	0.44
1:A:1327:GLU:HB2	1:B:1006:ASP:HB2	1.99	0.44
1:A:1606:GLU:O	1:A:1610:LYS:HG3	2.17	0.44
1:B:38:ILE:HG21	1:B:70:MET:HE2	1.99	0.44
1:B:124:VAL:HG11	1:B:187:ASN:HD21	1.82	0.44

Continued on next page...

Continued from previous page...

Atom-1	Atom-2	Interatomic distance (Å)	Clash overlap (Å)
1:B:424:LEU:HD13	1:B:603:VAL:HG11	1.99	0.44
1:B:679:ILE:HG21	1:B:695:VAL:HG13	1.99	0.44
1:B:1072:ALA:CB	1:B:1256:LYS:HG2	2.48	0.44
2:F:144:PHE:O	2:F:148:ILE:HG12	2.18	0.44
1:A:1258:ASP:HA	1:A:1261:VAL:HB	1.99	0.44
1:A:1300:GLU:N	1:B:1299:ALA:HB1	2.33	0.44
1:A:1302:LYS:HE3	1:A:1302:LYS:HB2	1.65	0.44
1:B:1530:LEU:O	1:B:1534:LYS:HB3	2.18	0.44
3:E:40:ILE:HA	3:E:56:MET:HG3	2.00	0.44
1:A:847:VAL:O	1:A:850:GLN:HG2	2.18	0.44
1:A:1268:VAL:HG22	1:B:1267:LYS:C	2.43	0.44
1:A:1831:GLU:OE1	1:A:1835:LYS:NZ	2.51	0.44
1:B:336:MET:HE2	1:B:336:MET:HA	2.00	0.44
1:B:745:GLN:HA	1:B:748:GLU:HB2	2.00	0.44
1:B:1067:LEU:O	1:B:1071:ILE:HG13	2.18	0.44
1:B:1517:MET:HA	1:B:1520:LYS:HB2	2.00	0.44
1:A:588:ALA:HA	1:A:591:TRP:CE2	2.52	0.44
1:A:867:LYS:HD2	1:B:871:VAL:HG21	1.99	0.44
1:A:1004:MET:CG	1:B:1004:MET:HB3	2.47	0.44
1:A:1008:ILE:HD12	1:B:1321:GLN:HB3	1.99	0.44
1:B:1069:ASP:OD1	1:B:1260:GLN:NE2	2.48	0.44
3:D:139:ASP:O	3:D:143:ARG:HG3	2.18	0.44
1:A:102:LEU:HD11	1:A:692:PRO:HB3	1.99	0.44
1:A:1326:GLU:HB2	1:B:1006:ASP:OD1	2.18	0.44
2:C:37:ARG:HA	2:C:41:GLN:O	2.18	0.44
3:D:130:GLY:O	3:D:132:ARG:NH1	2.50	0.44
1:A:1047:GLU:HB2	1:B:1046:GLU:OE2	2.18	0.44
1:A:1026:ALA:HB3	1:A:1305:LYS:HZ3	1.82	0.43
1:A:1247:LYS:O	1:A:1251:GLU:HG2	2.17	0.43
1:A:1320:THR:HA	1:B:1010:GLU:HB3	2.00	0.43
1:A:1338:ILE:CD1	1:B:1334:LEU:HA	2.48	0.43
1:A:1622:MET:SD	1:B:1619:LYS:HG3	2.58	0.43
1:B:182:ALA:HB2	1:B:680:ILE:HG13	1.99	0.43
1:B:838:PHE:O	1:B:843:PRO:HD3	2.17	0.43
3:D:21:VAL:HG21	3:D:86:LEU:O	2.19	0.43
1:A:142:TYR:CE1	1:A:150:MET:HB2	2.53	0.43
1:A:1254:ARG:HG3	1:B:1257:LEU:CD2	2.48	0.43
1:B:184:LYS:NZ	6:B:2002:PO4:O4	2.44	0.43
1:A:1850:LYS:HE3	1:A:1850:LYS:HB3	1.90	0.43
1:B:1004:MET:HG3	1:B:1325:GLN:CD	2.44	0.43
1:B:1031:LYS:O	1:B:1035:MET:HG3	2.17	0.43

Continued on next page...

Continued from previous page...

Atom-1	Atom-2	Interatomic distance (Å)	Clash overlap (Å)
1:B:1840:ALA:O	1:B:1844:VAL:HG23	2.19	0.43
2:F:37:ARG:HD2	2:F:43:PRO:HD2	2.01	0.43
1:A:573:ALA:HB2	1:A:585:ASP:HB3	1.99	0.43
1:A:622:VAL:HA	1:A:625:ILE:HG13	2.00	0.43
1:A:1285:LEU:HD13	1:B:1286:GLN:N	2.34	0.43
1:A:1737:ARG:NH2	1:B:1023:LYS:HE2	2.34	0.43
1:B:1449:LYS:O	1:B:1453:PHE:HD2	2.00	0.43
3:D:31:GLN:NE2	3:D:35:GLU:OE2	2.39	0.43
1:A:816:LEU:HD23	1:A:816:LEU:HA	1.84	0.43
1:A:1726:ALA:CB	1:B:1012:SER:HB2	2.47	0.43
3:E:141:LEU:HD23	3:E:141:LEU:HA	1.91	0.43
1:A:571:ASP:OD2	1:A:572:LYS:NZ	2.51	0.43
1:A:781:GLU:OE1	1:A:785:LYS:NZ	2.51	0.43
1:A:1594:LEU:O	1:A:1598:VAL:HG23	2.18	0.43
1:B:370:ALA:C	1:B:397:LEU:HD22	2.44	0.43
1:B:711:CYS:SG	1:B:716:PRO:HG3	2.58	0.43
1:B:1258:ASP:O	1:B:1262:GLN:HG3	2.19	0.43
1:B:1724:LYS:O	1:B:1728:LEU:HD13	2.19	0.43
2:C:32:CYS:O	2:C:36:MET:HG3	2.19	0.43
3:E:117:ILE:HD11	3:E:155:TYR:CD2	2.54	0.43
1:A:90:MET:SD	1:A:101:VAL:HG13	2.59	0.43
1:A:279:ARG:NE	1:A:315:ILE:O	2.44	0.43
1:A:1418:LEU:CD2	1:B:1418:LEU:HB3	2.49	0.43
1:B:173:SER:HB2	1:B:175:LEU:HD21	2.00	0.43
1:B:1667:SER:O	1:B:1671:ILE:HG12	2.18	0.43
2:C:36:MET:HE2	2:C:36:MET:HB3	1.94	0.43
3:D:70:ASP:O	3:D:74:ASN:HB2	2.18	0.43
2:F:35:VAL:O	2:F:39:LEU:HG	2.19	0.43
1:A:770:PHE:CE2	1:A:775:LEU:HD13	2.54	0.43
1:A:1134:ARG:CB	1:B:1134:ARG:HB3	2.49	0.43
1:A:1823:ILE:HD11	1:B:1819:LEU:O	2.19	0.43
1:B:139:ILE:HG23	1:B:194:TYR:CD1	2.54	0.43
1:B:181:GLY:HA2	5:B:2001:ADP:O3B	2.19	0.43
2:F:90:VAL:O	2:F:94:ARG:HB2	2.18	0.43
1:A:447:THR:HG22	1:A:449:ARG:H	1.84	0.43
1:A:834:TRP:CD1	1:A:834:TRP:N	2.87	0.43
1:B:333:MET:SD	1:B:346:MET:HE2	2.59	0.43
1:B:791:ILE:HG23	2:F:118:GLU:OE2	2.19	0.43
1:B:856:ALA:HA	1:B:859:GLU:HB2	2.01	0.43
1:B:1014:GLN:H	1:B:1014:GLN:HG3	1.58	0.43
1:B:806:PHE:HB2	2:F:38:ALA:HB1	2.01	0.42

Continued on next page...

Continued from previous page...

Atom-1	Atom-2	Interatomic distance (Å)	Clash overlap (Å)
2:C:13:LYS:HE3	2:C:17:GLN:NE2	2.34	0.42
1:A:1815:THR:O	1:A:1819:LEU:HG	2.19	0.42
3:D:33:PHE:CE1	3:D:89:PHE:CD1	3.07	0.42
3:D:116:THR:HG22	3:D:154:ASN:HA	2.00	0.42
1:A:891:ILE:HD13	1:B:1609:ARG:HG3	2.02	0.42
1:A:1499:LYS:O	1:A:1503:GLU:HG3	2.19	0.42
1:B:405:ARG:N	1:B:936:GLU:HB2	2.35	0.42
1:B:483:LEU:HD13	1:B:483:LEU:HA	1.86	0.42
1:B:944:GLU:O	1:B:948:MET:HG2	2.19	0.42
1:B:1217:ARG:O	1:B:1220:ALA:HB3	2.20	0.42
1:B:1496:LEU:O	1:B:1499:LYS:HB2	2.19	0.42
1:B:1784:ASP:O	1:B:1788:GLN:HG3	2.20	0.42
3:E:40:ILE:HD11	3:E:53:LEU:HA	2.00	0.42
1:A:346:MET:HE1	1:A:436:LEU:HB2	2.01	0.42
1:A:573:ALA:CB	1:A:585:ASP:HB3	2.49	0.42
1:A:1616:VAL:HG22	1:B:1611:GLN:OE1	2.19	0.42
1:A:1737:ARG:HE	1:A:1741:LEU:HD21	1.84	0.42
1:B:192:ILE:HG23	1:B:219:LEU:HB2	2.01	0.42
1:B:836:ARG:NH1	3:E:72:MET:SD	2.93	0.42
3:D:3:LYS:O	3:D:4:LYS:HB3	2.20	0.42
1:A:843:PRO:HG3	3:D:36:ALA:HA	1.99	0.42
1:A:848:THR:HG22	1:A:851:GLU:CD	2.44	0.42
1:A:1843:LEU:HB2	1:B:1840:ALA:HB1	2.00	0.42
1:B:819:LEU:CB	3:E:105:ALA:HB1	2.45	0.42
1:A:732:THR:OG1	1:A:750:MET:HG2	2.18	0.42
1:A:1022:ALA:HA	1:A:1025:LEU:HD12	2.00	0.42
1:A:1313:LEU:HD23	1:B:1313:LEU:HB3	2.02	0.42
1:A:1734:LEU:O	1:A:1738:ILE:HG12	2.20	0.42
1:B:1032:GLN:O	1:B:1033:GLU:C	2.61	0.42
1:A:906:ALA:HA	1:A:909:MET:SD	2.60	0.42
1:A:1316:GLN:HA	1:B:1014:GLN:CD	2.44	0.42
1:A:1787:ARG:HB2	1:B:1783:SER:HB3	2.01	0.42
1:B:949:GLN:O	1:B:953:GLN:HG3	2.20	0.42
1:A:188:THR:O	1:A:192:ILE:HG12	2.20	0.42
1:A:751:ILE:HD11	1:A:768:ILE:HD13	2.02	0.42
1:A:813:LEU:HD13	3:D:129:MET:CE	2.50	0.42
1:A:920:LEU:O	1:A:923:ILE:HG22	2.20	0.42
1:A:1575:GLN:NE2	1:A:1579:ASP:OD1	2.53	0.42
3:E:72:MET:O	3:E:72:MET:HE3	2.20	0.42
1:A:142:TYR:OH	1:A:153:HIS:HB2	2.19	0.42
1:A:174:ILE:O	1:A:457:ILE:HA	2.20	0.42

Continued on next page...

Continued from previous page...

Atom-1	Atom-2	Interatomic distance (Å)	Clash overlap (Å)
1:A:1092:LEU:HD22	1:B:1088:LYS:HE3	2.02	0.42
1:B:1520:LYS:O	1:B:1525:LYS:N	2.53	0.42
1:B:1573:LYS:NZ	1:B:1577:GLU:OE2	2.51	0.42
3:E:116:THR:HA	3:E:153:PHE:O	2.19	0.42
1:B:121:PHE:CD2	1:B:677:ARG:HD3	2.55	0.42
1:B:395:ALA:O	1:B:600:ASN:ND2	2.44	0.42
1:B:706:GLU:O	1:B:710:ILE:HG13	2.20	0.42
1:B:1019:GLU:HB2	1:B:1735:GLU:HG3	2.02	0.42
2:C:4:PHE:CE1	3:D:4:LYS:HG2	2.53	0.42
1:A:193:GLN:HA	1:A:219:LEU:HD21	2.02	0.41
1:A:484:GLN:HG3	1:A:580:TYR:CE2	2.55	0.41
1:A:1286:GLN:OE1	1:B:1285:LEU:HD11	2.20	0.41
1:A:1849:LYS:NZ	1:A:1853:GLU:OE2	2.47	0.41
1:B:62:LEU:H	1:B:66:GLY:HA2	1.85	0.41
1:B:838:PHE:HA	1:B:842:LYS:HB3	2.01	0.41
1:B:1027:LYS:HG2	1:B:1028:ILE:N	2.34	0.41
3:E:31:GLN:OE1	3:E:34:LYS:HB3	2.21	0.41
3:E:103:ARG:O	3:E:106:PHE:HB3	2.20	0.41
1:A:1748:GLU:HB2	1:B:1748:GLU:HB2	2.02	0.41
1:A:1036:ILE:HG13	1:B:1036:ILE:CG2	2.51	0.41
1:A:1317:LEU:HD11	1:B:1324:LEU:HD21	2.03	0.41
1:A:1563:LEU:HD11	3:D:11:LYS:HE3	2.02	0.41
2:F:90:VAL:HG23	2:F:145:VAL:HG11	2.02	0.41
1:A:842:LYS:HA	1:A:842:LYS:HD3	1.82	0.41
1:A:1338:ILE:HD11	1:B:1334:LEU:CA	2.50	0.41
1:A:1342:GLU:HG3	1:B:1341:LEU:HD21	2.03	0.41
1:B:196:ALA:HB1	1:B:216:ARG:HG3	2.03	0.41
1:B:797:CYS:SG	2:F:128:LEU:HD21	2.60	0.41
1:B:816:LEU:O	1:B:820:GLN:HG3	2.20	0.41
1:B:1362:LEU:O	1:B:1366:VAL:HG23	2.21	0.41
1:A:540:TRP:CE2	1:A:648:GLY:HA2	2.56	0.41
1:A:1762:THR:O	1:A:1766:VAL:HG23	2.20	0.41
1:B:235:LYS:HE3	1:B:683:HIS:HE1	1.83	0.41
1:B:391:GLU:O	1:B:395:ALA:HB2	2.20	0.41
1:B:819:LEU:HD21	3:E:109:PHE:CD2	2.55	0.41
1:B:993:GLN:O	1:B:996:LYS:NZ	2.41	0.41
3:E:116:THR:C	3:E:117:ILE:HG13	2.46	0.41
1:A:1692:LEU:O	1:B:1696:LEU:HD11	2.20	0.41
1:B:52:GLU:HB3	1:B:59:MET:HB2	2.02	0.41
1:B:916:LYS:O	1:B:920:LEU:HG	2.21	0.41
3:D:119:GLU:N	3:D:151:GLY:O	2.42	0.41

Continued on next page...

Continued from previous page...

Atom-1	Atom-2	Interatomic distance (Å)	Clash overlap (Å)
3:D:164:HIS:ND1	3:D:164:HIS:C	2.78	0.41
2:F:37:ARG:HA	2:F:41:GLN:O	2.21	0.41
1:A:825:ALA:HB1	3:D:94:ASN:O	2.21	0.41
1:A:1088:LYS:HE2	1:B:1089:GLU:HG2	2.03	0.41
1:A:1269:SER:O	1:A:1273:ARG:HG3	2.21	0.41
1:A:1269:SER:OG	1:B:1058:ARG:NH2	2.53	0.41
1:A:1748:GLU:CB	1:B:1748:GLU:HB2	2.51	0.41
1:B:177:THR:C	1:B:184:LYS:HD3	2.45	0.41
1:B:265:LEU:HA	1:B:657:TYR:CE1	2.55	0.41
1:B:1001:LYS:HA	1:B:1004:MET:HE3	2.01	0.41
1:B:1038:ASP:CG	1:B:1755:LEU:HG	2.45	0.41
3:D:71:ALA:O	3:D:72:MET:HE2	2.21	0.41
1:A:224:ILE:HG22	1:A:436:LEU:HD21	2.02	0.41
1:A:718:ARG:HA	1:A:768:ILE:O	2.20	0.41
1:A:837:VAL:HG21	3:D:164:HIS:C	2.46	0.41
1:A:1696:LEU:HB2	1:B:1696:LEU:HD12	2.02	0.41
1:A:1726:ALA:HB3	1:B:1012:SER:HB2	2.02	0.41
1:B:243:GLY:HA2	1:B:460:ILE:HA	2.02	0.41
1:B:819:LEU:HB3	3:E:105:ALA:CB	2.46	0.41
1:B:1003:LEU:H	1:B:1003:LEU:HG	1.42	0.41
2:C:16:PHE:O	2:C:20:ASP:N	2.53	0.41
3:D:128:THR:O	3:D:132:ARG:NH2	2.53	0.41
1:A:592:LEU:O	1:A:596:MET:HG2	2.21	0.41
1:A:721:PHE:HE1	1:A:768:ILE:HG12	1.85	0.41
1:A:1106:LYS:HG2	1:B:1109:ALA:CB	2.51	0.41
1:A:1348:LEU:HD12	1:A:1348:LEU:C	2.45	0.41
1:A:1737:ARG:HH22	1:B:1023:LYS:HE2	1.84	0.41
1:A:1878:ARG:HB2	1:B:1879:MET:SD	2.61	0.41
1:B:263:THR:OG1	1:B:437:VAL:HG21	2.21	0.41
1:B:272:VAL:HG23	1:B:273:ARG:HG3	2.03	0.41
1:B:542:PRO:HB3	1:B:630:GLN:HB3	2.03	0.41
1:B:760:LEU:HB3	1:B:774:VAL:HG21	2.01	0.41
1:B:838:PHE:N	1:B:838:PHE:CD1	2.89	0.41
1:B:1061:ASP:O	1:B:1065:THR:OG1	2.35	0.41
1:B:1605:LEU:HD23	1:B:1608:GLU:OE1	2.20	0.41
1:B:1657:TYR:O	1:B:1660:GLU:HB2	2.20	0.41
2:C:15:ALA:O	2:C:18:LEU:HB2	2.21	0.41
3:E:119:GLU:O	3:E:123:ARG:HG2	2.20	0.41
1:A:228:PHE:CE2	1:A:283:ILE:HG12	2.56	0.41
1:A:599:LEU:O	1:A:627:GLY:HA2	2.21	0.41
1:B:819:LEU:HD21	3:E:109:PHE:CE2	2.56	0.41

Continued on next page...

Continued from previous page...

Atom-1	Atom-2	Interatomic distance (Å)	Clash overlap (Å)
3:E:145:ALA:HB1	3:E:153:PHE:CE1	2.56	0.41
1:A:810:GLN:HA	2:C:18:LEU:CD2	2.51	0.40
1:B:346:MET:HG2	1:B:432:LEU:HD21	2.03	0.40
1:A:496:GLN:HG2	1:A:506:TRP:HE1	1.85	0.40
1:A:1027:LYS:HG3	1:A:1305:LYS:NZ	2.34	0.40
1:A:1053:LEU:HB3	1:B:1053:LEU:HB3	2.03	0.40
1:B:37:TRP:CH2	1:B:47:ALA:HB2	2.56	0.40
1:B:823:CYS:HA	1:B:826:TYR:CE2	2.56	0.40
1:B:1243:LEU:HA	1:B:1246:VAL:HG22	2.03	0.40
2:C:87:GLU:HA	2:C:90:VAL:HG22	2.03	0.40
1:A:478:TYR:HE1	1:A:519:ILE:HG23	1.85	0.40
1:A:647:LYS:HE3	1:B:912:ARG:HH22	1.87	0.40
1:A:1015:LEU:CD1	1:A:1316:GLN:HB2	2.52	0.40
1:A:1258:ASP:O	1:A:1262:GLN:HG2	2.22	0.40
1:A:1324:LEU:HA	1:B:1006:ASP:OD2	2.20	0.40
1:A:1801:LEU:HD22	1:B:1800:LYS:HB2	2.02	0.40
1:B:187:ASN:O	1:B:191:VAL:HG23	2.22	0.40
1:B:335:ILE:HG13	1:B:336:MET:HE3	2.04	0.40
2:C:16:PHE:CZ	2:C:70:PHE:HB3	2.56	0.40
2:C:133:GLU:HA	2:C:139:ILE:HG22	2.03	0.40
3:E:21:VAL:HG13	3:E:90:GLY:HA3	2.03	0.40
3:E:85:PHE:CE2	3:E:89:PHE:HE2	2.40	0.40
1:A:483:LEU:O	1:A:486:LEU:HB2	2.21	0.40
1:A:807:ALA:HA	1:A:810:GLN:HG2	2.04	0.40
1:B:1042:ARG:NH1	1:B:1757:ASP:HB3	2.37	0.40
1:B:1133:SER:O	1:B:1136:LYS:HB2	2.22	0.40
1:B:1468:ALA:HA	1:B:1471:ARG:HG2	2.02	0.40
1:B:1584:ASP:HA	1:B:1587:ASN:HD22	1.85	0.40
1:B:1668:ARG:O	1:B:1672:PHE:HB3	2.22	0.40
1:B:1847:THR:O	1:B:1851:LEU:HB2	2.21	0.40
1:A:194:TYR:O	1:A:198:VAL:HG22	2.22	0.40
1:A:1308:LYS:NZ	1:B:1022:ALA:HA	2.36	0.40
1:A:1612:ARG:O	1:A:1616:VAL:HG23	2.22	0.40
1:A:1658:GLN:O	1:A:1662:GLU:HG2	2.20	0.40
1:B:175:LEU:HA	1:B:458:LEU:HB3	2.02	0.40
1:B:819:LEU:HD23	3:E:106:PHE:HA	2.03	0.40
1:B:1838:ALA:O	1:B:1842:LYS:HG3	2.21	0.40
3:D:158:PHE:O	3:D:162:LEU:HG	2.22	0.40

There are no symmetry-related clashes.

5.3 Torsion angles [i](#)

5.3.1 Protein backbone [i](#)

In the following table, the Percentiles column shows the percent Ramachandran outliers of the chain as a percentile score with respect to all PDB entries followed by that with respect to all EM entries.

The Analysed column shows the number of residues for which the backbone conformation was analysed, and the total number of residues.

Mol	Chain	Analysed	Favoured	Allowed	Outliers	Percentiles	
1	A	1869/1976 (95%)	1850 (99%)	19 (1%)	0	100	100
1	B	1873/1976 (95%)	1859 (99%)	13 (1%)	1 (0%)	48	83
2	C	147/151 (97%)	147 (100%)	0	0	100	100
2	F	147/151 (97%)	147 (100%)	0	0	100	100
3	D	167/172 (97%)	167 (100%)	0	0	100	100
3	E	157/172 (91%)	153 (98%)	4 (2%)	0	100	100
All	All	4360/4598 (95%)	4323 (99%)	36 (1%)	1 (0%)	100	100

All (1) Ramachandran outliers are listed below:

Mol	Chain	Res	Type
1	B	73	LYS

5.3.2 Protein sidechains [i](#)

In the following table, the Percentiles column shows the percent sidechain outliers of the chain as a percentile score with respect to all PDB entries followed by that with respect to all EM entries.

The Analysed column shows the number of residues for which the sidechain conformation was analysed, and the total number of residues.

Mol	Chain	Analysed	Rotameric	Outliers	Percentiles	
1	A	1646/1733 (95%)	1627 (99%)	19 (1%)	63	75
1	B	1649/1733 (95%)	1628 (99%)	21 (1%)	61	74
2	C	127/129 (98%)	126 (99%)	1 (1%)	73	80
2	F	127/129 (98%)	127 (100%)	0	100	100
3	D	147/150 (98%)	147 (100%)	0	100	100
3	E	138/150 (92%)	134 (97%)	4 (3%)	37	58

Continued on next page...

Continued from previous page...

Mol	Chain	Analysed	Rotameric	Outliers	Percentiles
All	All	3834/4024 (95%)	3789 (99%)	45 (1%)	61 75

All (45) residues with a non-rotameric sidechain are listed below:

Mol	Chain	Res	Type
1	A	60	VAL
1	A	625	ILE
1	A	677	ARG
1	A	829	LEU
1	A	842	LYS
1	A	1294	THR
1	A	1296	LEU
1	A	1301	LYS
1	A	1306	PHE
1	A	1308	LYS
1	A	1313	LEU
1	A	1314	GLU
1	A	1317	LEU
1	A	1318	GLN
1	A	1320	THR
1	A	1322	GLU
1	A	1323	LEU
1	A	1324	LEU
1	A	1594	LEU
1	B	233	THR
1	B	819	LEU
1	B	829	LEU
1	B	996	LYS
1	B	1000	GLU
1	B	1002	LYS
1	B	1003	LEU
1	B	1004	MET
1	B	1006	ASP
1	B	1007	ARG
1	B	1008	ILE
1	B	1011	CYS
1	B	1019	GLU
1	B	1023	LYS
1	B	1027	LYS
1	B	1030	ASN
1	B	1031	LYS
1	B	1033	GLU

Continued on next page...

Continued from previous page...

Mol	Chain	Res	Type
1	B	1034	VAL
1	B	1037	SER
1	B	1038	ASP
2	C	9	THR
3	E	96	THR
3	E	102	ILE
3	E	117	ILE
3	E	162	LEU

Sometimes sidechains can be flipped to improve hydrogen bonding and reduce clashes. All (36) such sidechains are listed below:

Mol	Chain	Res	Type
1	A	305	ASN
1	A	379	GLN
1	A	485	GLN
1	A	489	HIS
1	A	630	GLN
1	A	672	ASN
1	A	822	ASN
1	A	951	HIS
1	A	1117	GLN
1	A	1190	HIS
1	A	1286	GLN
1	A	1321	GLN
1	A	1351	GLN
1	A	1352	GLN
1	A	1556	GLN
1	A	1581	GLN
1	A	1785	ASN
1	A	1885	GLN
1	B	286	GLN
1	B	312	ASN
1	B	334	HIS
1	B	340	HIS
1	B	358	ASN
1	B	812	GLN
1	B	820	GLN
1	B	884	GLN
1	B	970	GLN
1	B	994	ASN
1	B	1174	GLN
1	B	1265	HIS

Continued on next page...

Continued from previous page...

Mol	Chain	Res	Type
1	B	1349	GLN
1	B	1632	GLN
1	B	1693	GLN
2	C	83	GLN
3	E	63	ASN
2	F	83	GLN

5.3.3 RNA [i](#)

There are no RNA molecules in this entry.

5.4 Non-standard residues in protein, DNA, RNA chains [i](#)

There are no non-standard protein/DNA/RNA residues in this entry.

5.5 Carbohydrates [i](#)

There are no oligosaccharides in this entry.

5.6 Ligand geometry [i](#)

Of 6 ligands modelled in this entry, 2 are monoatomic - leaving 4 for Mogul analysis.

In the following table, the Counts columns list the number of bonds (or angles) for which Mogul statistics could be retrieved, the number of bonds (or angles) that are observed in the model and the number of bonds (or angles) that are defined in the Chemical Component Dictionary. The Link column lists molecule types, if any, to which the group is linked. The Z score for a bond length (or angle) is the number of standard deviations the observed value is removed from the expected value. A bond length (or angle) with $|Z| > 2$ is considered an outlier worth inspection. RMSZ is the root-mean-square of all Z scores of the bond lengths (or angles).

Mol	Type	Chain	Res	Link	Bond lengths			Bond angles		
					Counts	RMSZ	# Z > 2	Counts	RMSZ	# Z > 2
5	ADP	A	2002	-	28,29,29	1.50	5 (17%)	43,45,45	1.88	7 (16%)
5	ADP	B	2001	4	28,29,29	1.53	4 (14%)	43,45,45	1.98	8 (18%)
6	PO4	B	2002	4	4,4,4	1.52	1 (25%)	6,6,6	0.57	0
6	PO4	A	2003	4	4,4,4	1.54	1 (25%)	6,6,6	0.57	0

In the following table, the Chirals column lists the number of chiral outliers, the number of chiral centers analysed, the number of these observed in the model and the number defined in the

Chemical Component Dictionary. Similar counts are reported in the Torsion and Rings columns. '-' means no outliers of that kind were identified.

Mol	Type	Chain	Res	Link	Chirals	Torsions	Rings
5	ADP	A	2002	-	-	3/16/32/32	0/3/3/3
5	ADP	B	2001	4	-	2/16/32/32	0/3/3/3

All (11) bond length outliers are listed below:

Mol	Chain	Res	Type	Atoms	Z	Observed(Å)	Ideal(Å)
5	B	2001	ADP	C5-C4	5.20	1.48	1.39
5	A	2002	ADP	C5-C4	4.84	1.47	1.39
5	A	2002	ADP	C5-C6	3.04	1.49	1.41
5	B	2001	ADP	C5-C6	2.89	1.49	1.41
6	A	2003	PO4	P-O1	2.66	1.56	1.50
5	A	2002	ADP	C5-N7	-2.64	1.34	1.39
6	B	2002	PO4	P-O1	2.62	1.56	1.50
5	B	2001	ADP	C5-N7	-2.54	1.34	1.39
5	B	2001	ADP	C8-N7	2.36	1.36	1.31
5	A	2002	ADP	C8-N7	2.33	1.36	1.31
5	A	2002	ADP	PA-O3A	2.08	1.61	1.59

All (15) bond angle outliers are listed below:

Mol	Chain	Res	Type	Atoms	Z	Observed(°)	Ideal(°)
5	B	2001	ADP	C5-C4-N3	-6.45	117.84	126.72
5	A	2002	ADP	C5-C4-N3	-6.42	117.88	126.72
5	B	2001	ADP	N3-C4-N9	5.64	136.76	127.17
5	A	2002	ADP	N3-C4-N9	5.25	136.10	127.17
5	A	2002	ADP	C2-N3-C4	4.24	122.20	111.83
5	B	2001	ADP	C2-N3-C4	3.89	121.34	111.83
5	A	2002	ADP	N3-C2-N1	-3.71	122.97	128.58
5	B	2001	ADP	C4-C5-N7	-3.47	106.61	110.58
5	B	2001	ADP	C4-N9-C8	3.37	109.27	105.74
5	A	2002	ADP	C4-C5-N7	-3.07	107.08	110.58
5	B	2001	ADP	C5-N7-C8	2.99	108.15	103.45
5	B	2001	ADP	N3-C2-N1	-2.89	124.20	128.58
5	A	2002	ADP	C5-N7-C8	2.50	107.38	103.45
5	B	2001	ADP	N9-C8-N7	-2.38	110.56	113.94
5	A	2002	ADP	C4-N9-C8	2.29	108.14	105.74

There are no chirality outliers.

All (5) torsion outliers are listed below:

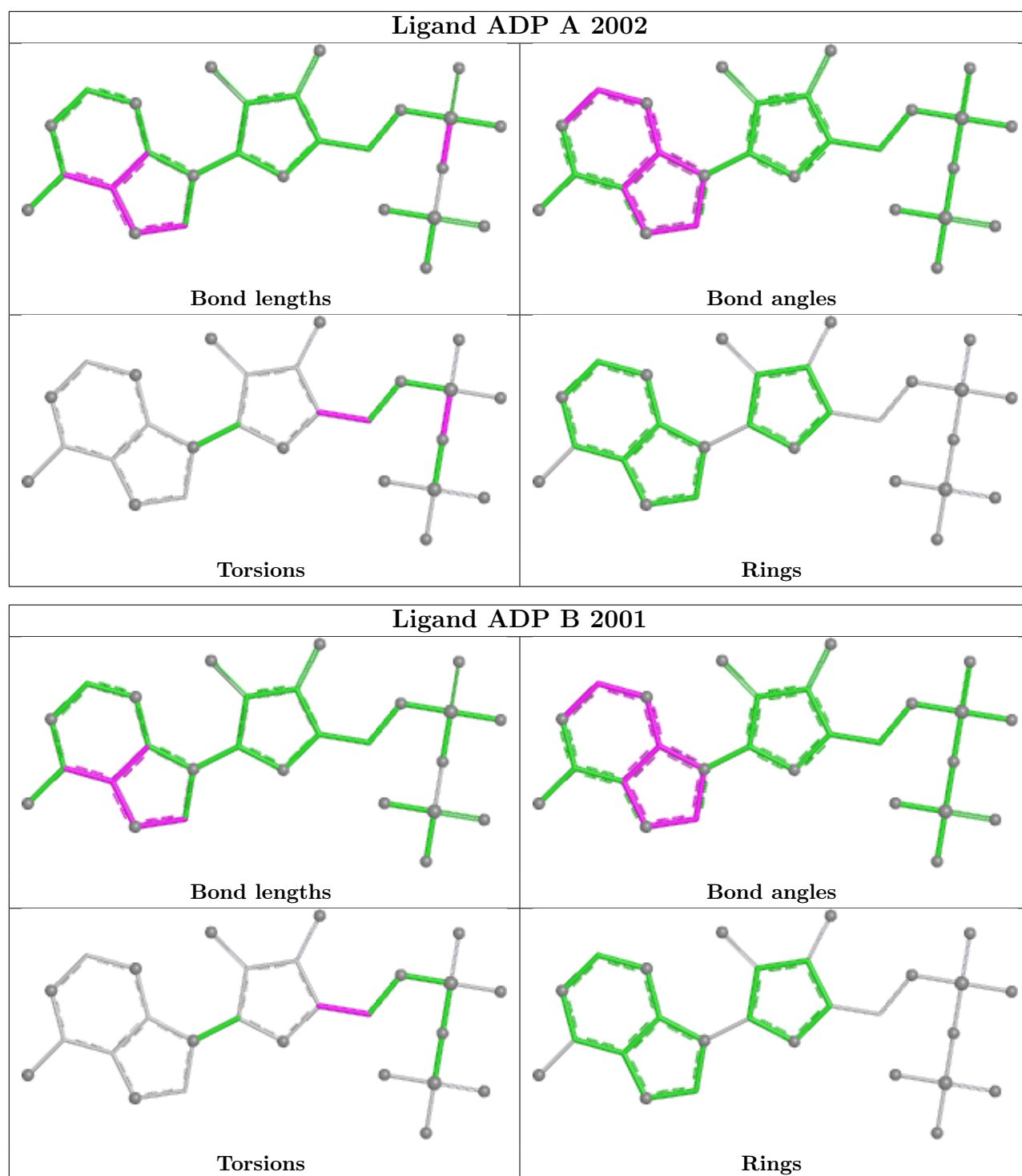
Mol	Chain	Res	Type	Atoms
5	B	2001	ADP	C3'-C4'-C5'-O5'
5	B	2001	ADP	O4'-C4'-C5'-O5'
5	A	2002	ADP	PB-O3A-PA-O1A
5	A	2002	ADP	PB-O3A-PA-O2A
5	A	2002	ADP	O4'-C4'-C5'-O5'

There are no ring outliers.

4 monomers are involved in 8 short contacts:

Mol	Chain	Res	Type	Clashes	Symm-Clashes
5	A	2002	ADP	2	0
5	B	2001	ADP	3	0
6	B	2002	PO4	2	0
6	A	2003	PO4	1	0

The following is a two-dimensional graphical depiction of Mogul quality analysis of bond lengths, bond angles, torsion angles, and ring geometry for all instances of the Ligand of Interest. In addition, ligands with molecular weight > 250 and outliers as shown on the validation Tables will also be included. For torsion angles, if less than 5% of the Mogul distribution of torsion angles is within 10 degrees of the torsion angle in question, then that torsion angle is considered an outlier. Any bond that is central to one or more torsion angles identified as an outlier by Mogul will be highlighted in the graph. For rings, the root-mean-square deviation (RMSD) between the ring in question and similar rings identified by Mogul is calculated over all ring torsion angles. If the average RMSD is greater than 60 degrees and the minimal RMSD between the ring in question and any Mogul-identified rings is also greater than 60 degrees, then that ring is considered an outlier. The outliers are highlighted in purple. The color gray indicates Mogul did not find sufficient equivalents in the CSD to analyse the geometry.



5.7 Other polymers [\(i\)](#)

There are no such residues in this entry.

5.8 Polymer linkage issues

There are no chain breaks in this entry.

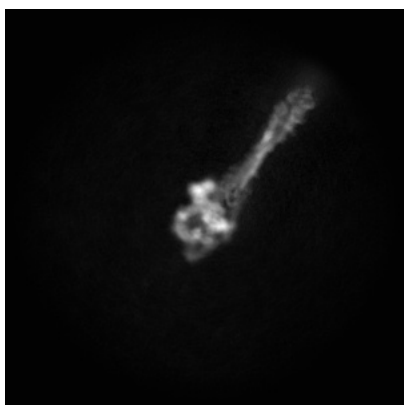
6 Map visualisation [i](#)

This section contains visualisations of the EMDB entry EMD-73797. These allow visual inspection of the internal detail of the map and identification of artifacts.

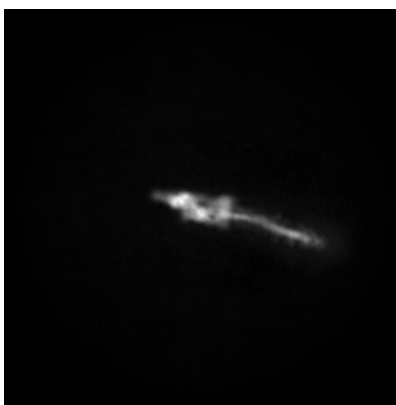
No raw map or half-maps were deposited for this entry and therefore no images, graphs, etc. pertaining to the raw map can be shown.

6.1 Orthogonal projections [i](#)

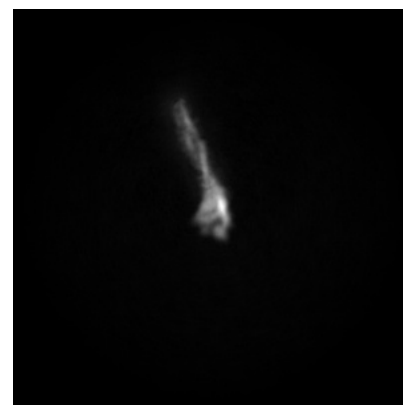
6.1.1 Primary map



X



Y

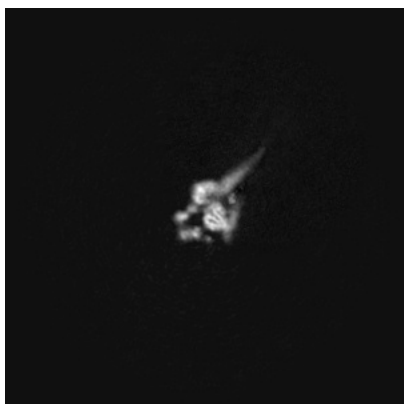


Z

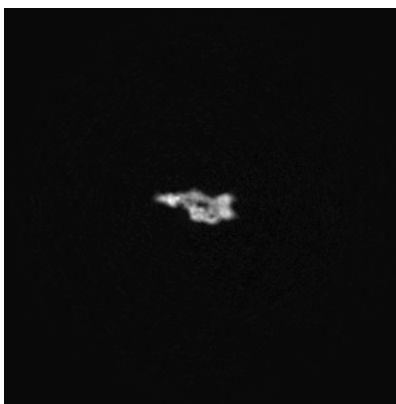
The images above show the map projected in three orthogonal directions.

6.2 Central slices [i](#)

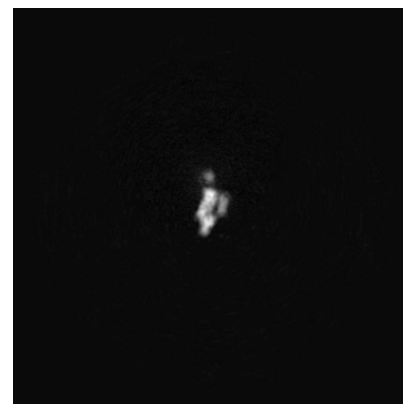
6.2.1 Primary map



X Index: 256



Y Index: 256

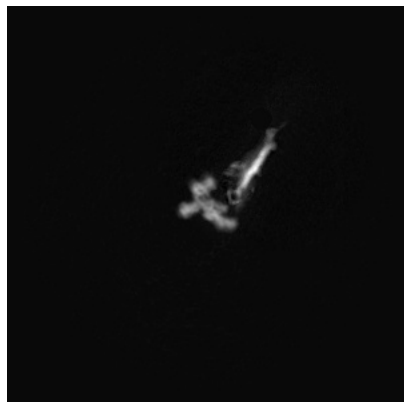


Z Index: 256

The images above show central slices of the map in three orthogonal directions.

6.3 Largest variance slices [i](#)

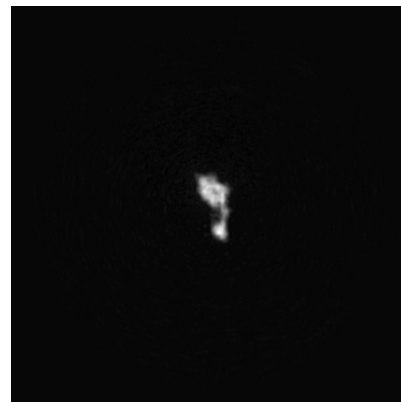
6.3.1 Primary map



X Index: 245



Y Index: 259



Z Index: 233

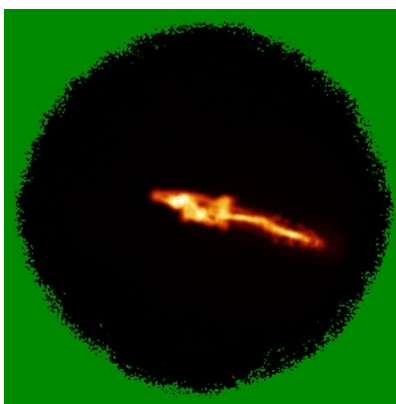
The images above show the largest variance slices of the map in three orthogonal directions.

6.4 Orthogonal standard-deviation projections (False-color) [i](#)

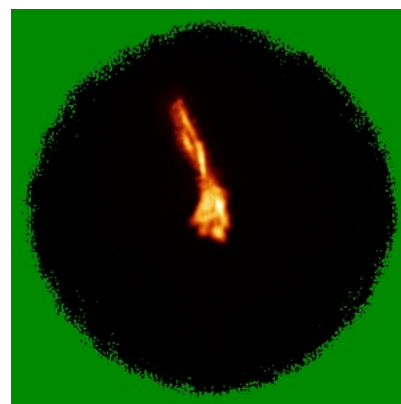
6.4.1 Primary map



X



Y



Z

The images above show the map standard deviation projections with false color in three orthogonal directions. Minimum values are shown in green, max in blue, and dark to light orange shades represent small to large values respectively.

6.5 Orthogonal surface views [i](#)

6.5.1 Primary map



The images above show the 3D surface view of the map at the recommended contour level 0.074. These images, in conjunction with the slice images, may facilitate assessment of whether an appropriate contour level has been provided.

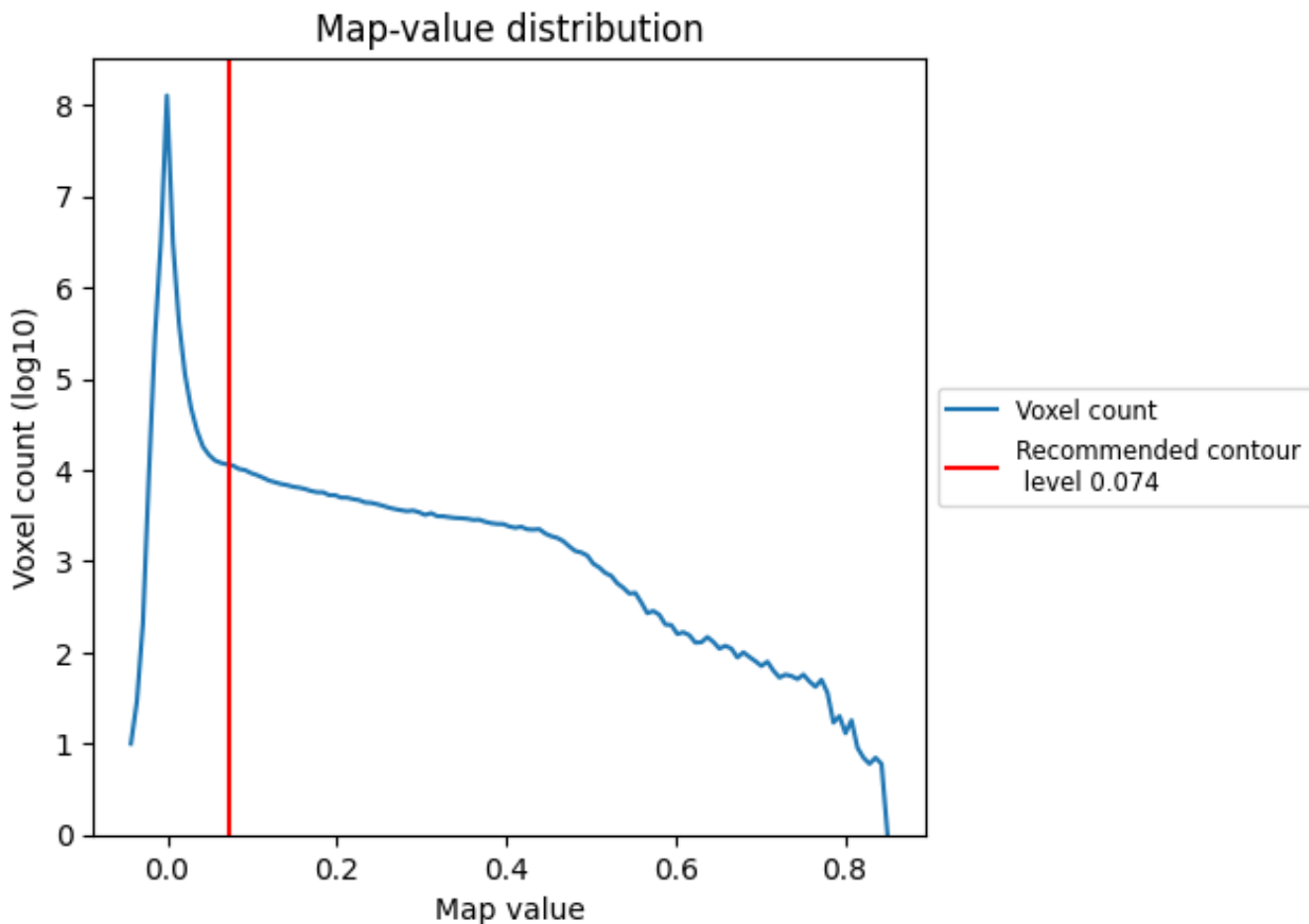
6.6 Mask visualisation [i](#)

This section was not generated. No masks/segmentation were deposited.

7 Map analysis [i](#)

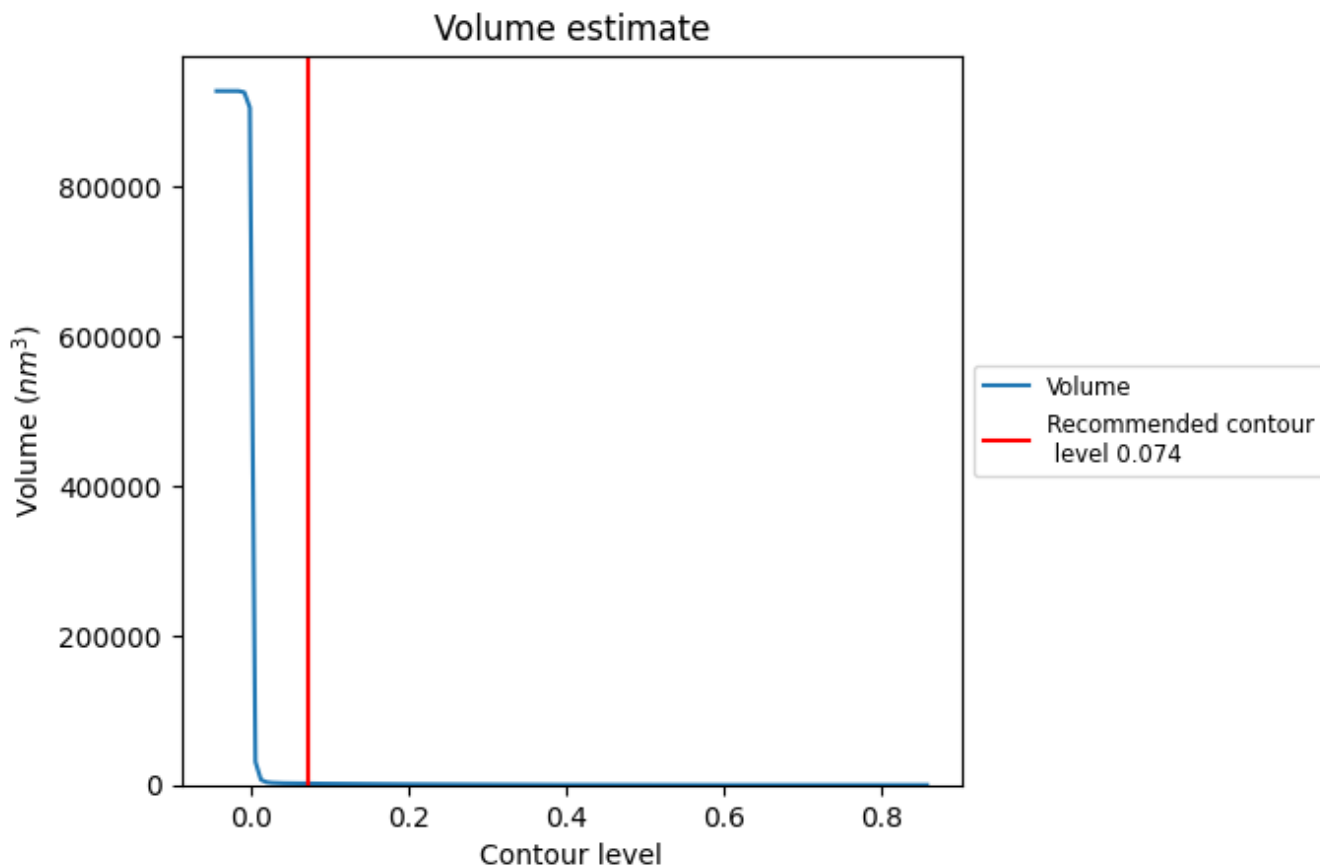
This section contains the results of statistical analysis of the map.

7.1 Map-value distribution [i](#)



The map-value distribution is plotted in 128 intervals along the x-axis. The y-axis is logarithmic. A spike in this graph at zero usually indicates that the volume has been masked.

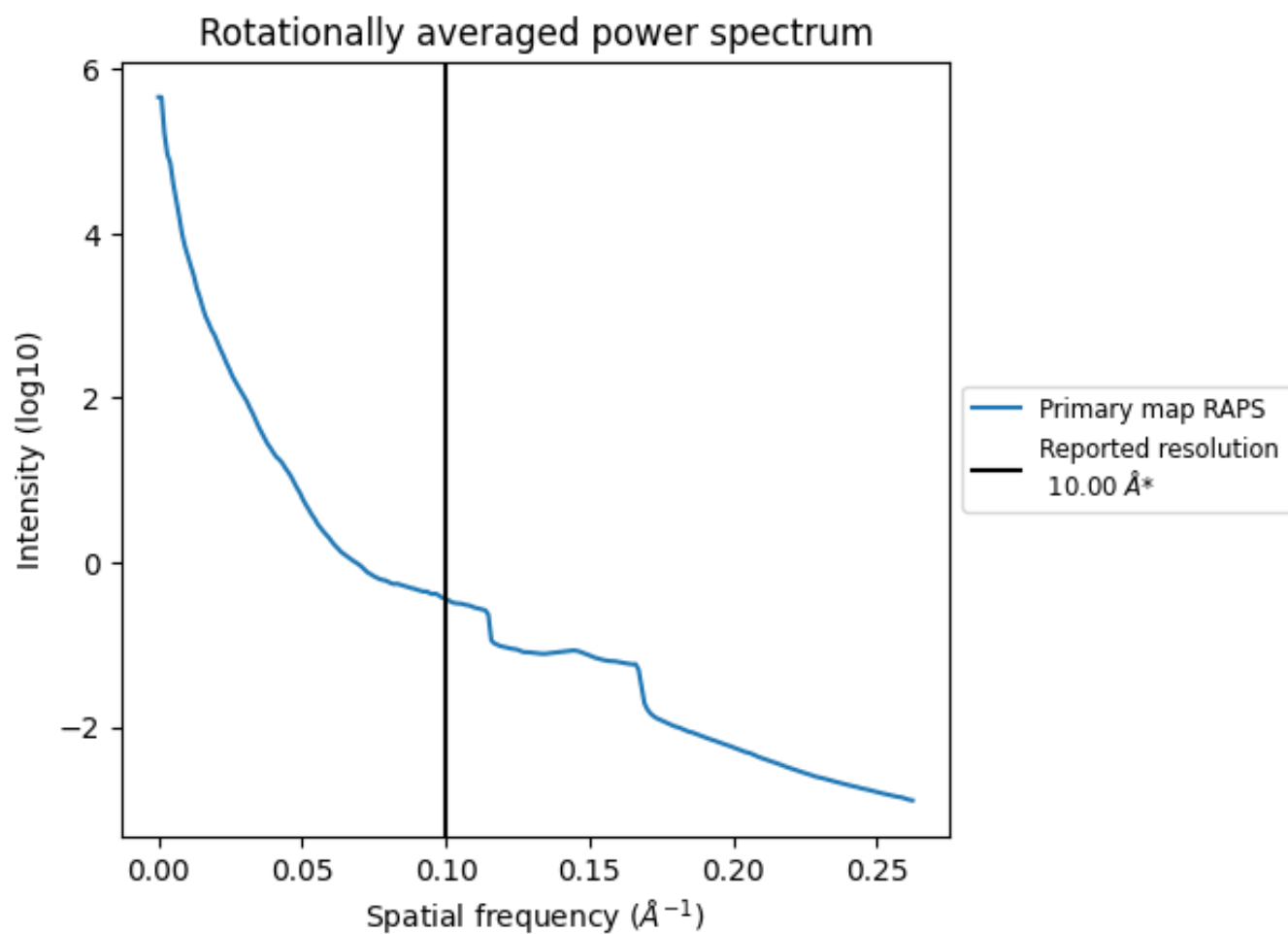
7.2 Volume estimate [i](#)



The volume at the recommended contour level is 1889 nm^3 ; this corresponds to an approximate mass of 1706 kDa.

The volume estimate graph shows how the enclosed volume varies with the contour level. The recommended contour level is shown as a vertical line and the intersection between the line and the curve gives the volume of the enclosed surface at the given level.

7.3 Rotationally averaged power spectrum [i](#)



*Reported resolution corresponds to spatial frequency of 0.100 Å⁻¹

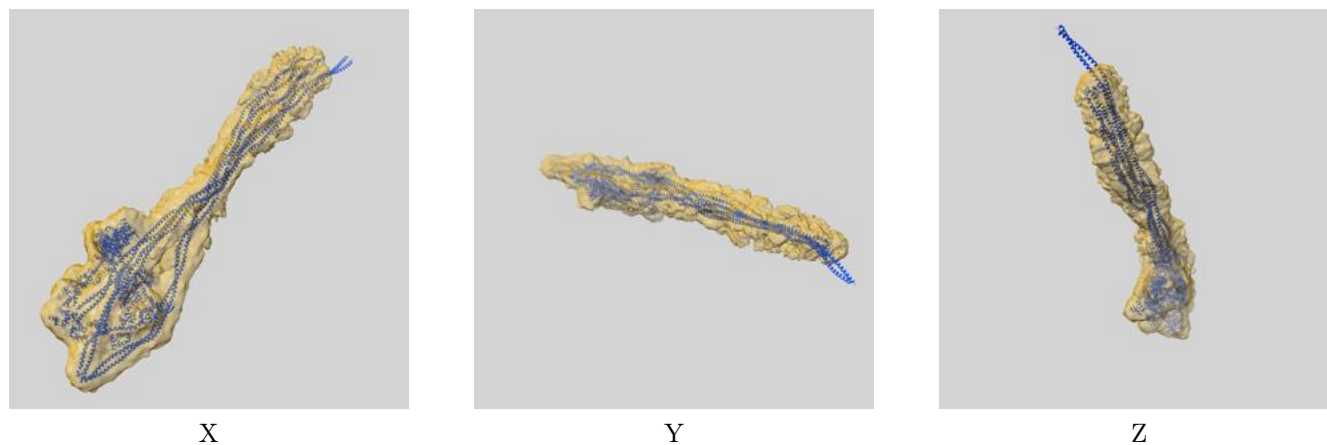
8 Fourier-Shell correlation

This section was not generated. No FSC curve or half-maps provided.

9 Map-model fit [i](#)

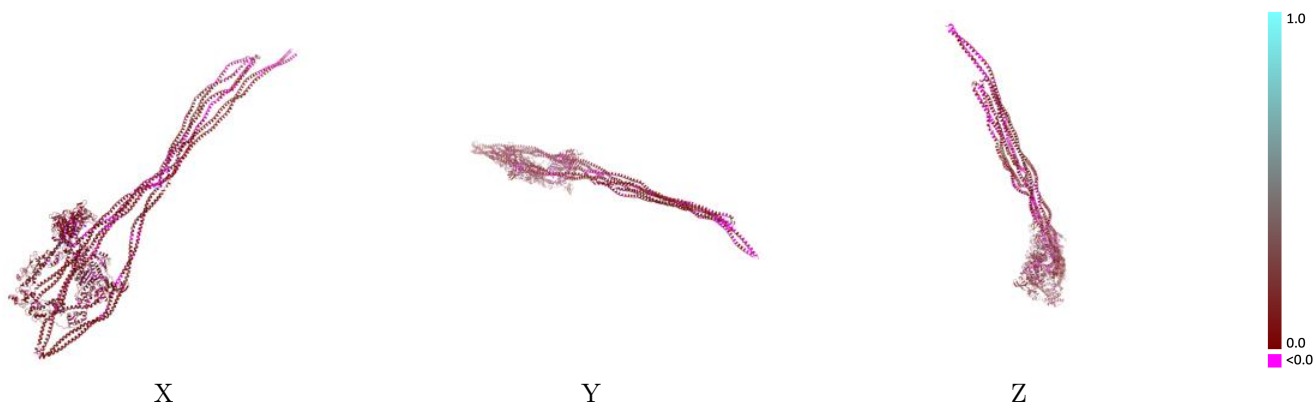
This section contains information regarding the fit between EMDB map EMD-73797 and PDB model 9Z40. Per-residue inclusion information can be found in section 3 on page 6.

9.1 Map-model overlay [i](#)



The images above show the 3D surface view of the map at the recommended contour level 0.074 at 50% transparency in yellow overlaid with a ribbon representation of the model coloured in blue. These images allow for the visual assessment of the quality of fit between the atomic model and the map.

9.2 Q-score mapped to coordinate model [i](#)



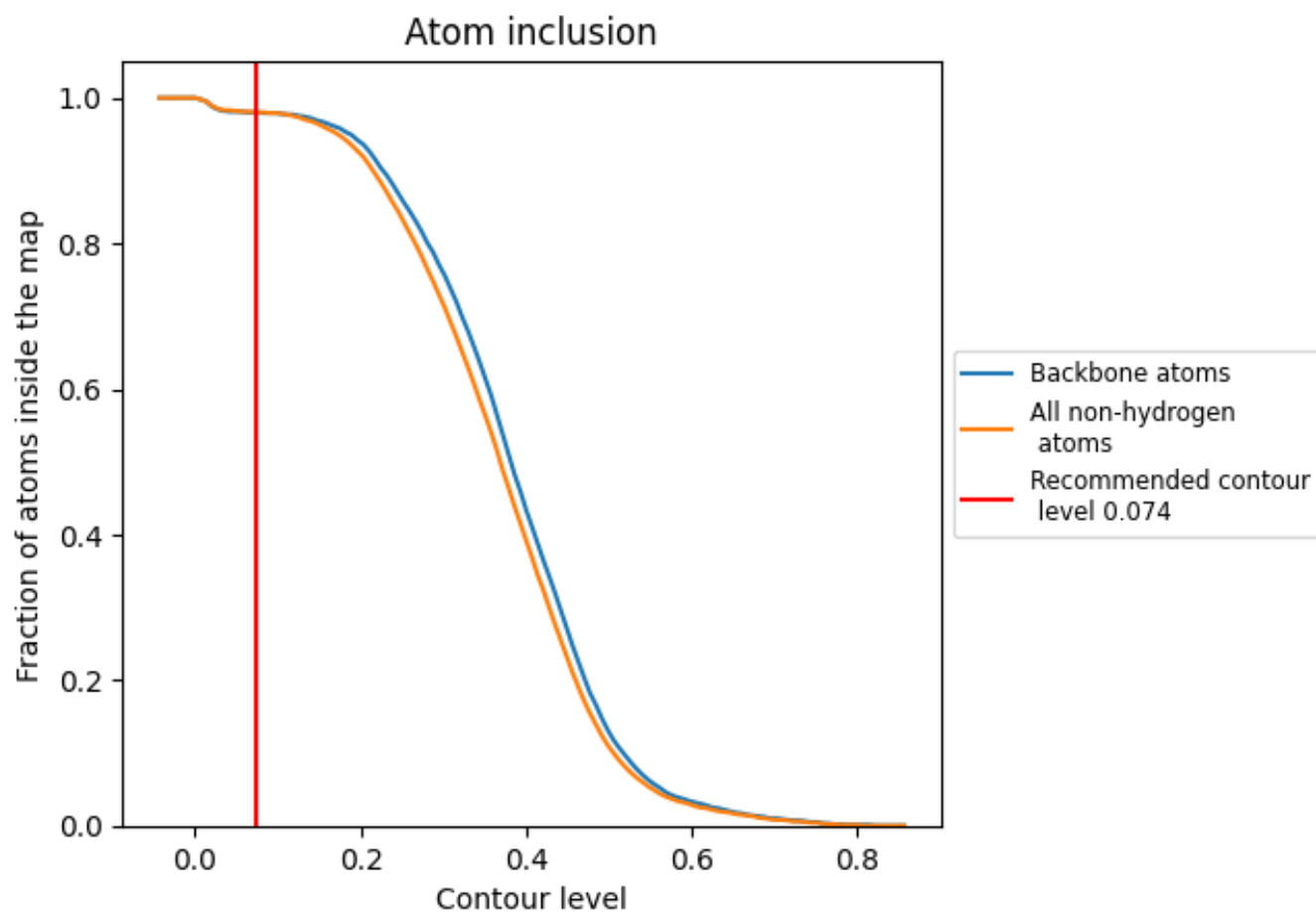
The images above show the model with each residue coloured according to its Q-score. This shows their resolvability in the map with higher Q-score values reflecting better resolvability. Please note: Q-score is calculating the resolvability of atoms, and thus high values are only expected at resolutions at which atoms can be resolved. Low Q-score values may therefore be expected for many entries.

9.3 Atom inclusion mapped to coordinate model [i](#)



The images above show the model with each residue coloured according to its atom inclusion. This shows to what extent they are inside the map at the recommended contour level (0.074).















9.4 Atom inclusion [i](#)



At the recommended contour level, 98% of all backbone atoms, 98% of all non-hydrogen atoms, are inside the map.

9.5 Map-model fit summary

The table lists the average atom inclusion at the recommended contour level (0.074) and Q-score for the entire model and for each chain.

Chain	Atom inclusion	Q-score
All	 0.9800	 0.0890
A	 0.9780	 0.0870
B	 0.9760	 0.0870
C	 1.0000	 0.1090
D	 1.0000	 0.0990
E	 1.0000	 0.0840
F	 1.0000	 0.0950

