



Full wwPDB X-ray Structure Validation Report ⓘ

Apr 25, 2026 – 09:42 PM EDT

PDB ID : 9XYQ / pdb_00009xyq
Title : Crystal structure of juvenile hormone acid methyltransferase CfJHAMT in complex with SAH (crystal form 2)
Authors : Picard, M.-E.; Cusson, M.; Shi, R.
Deposited on : 2025-08-26
Resolution : 2.84 Å(reported)

This is a Full wwPDB X-ray Structure Validation Report for a publicly released PDB entry.

We welcome your comments at validation@mail.wwpdb.org

A user guide is available at

<https://www.wwpdb.org/validation/2017/XrayValidationReportHelp>

with specific help available everywhere you see the ⓘ symbol.

The types of validation reports are described at

<http://www.wwpdb.org/validation/2017/FAQs#types>.

The following versions of software and data (see [references ⓘ](#)) were used in the production of this report:

MolProbity	:	4-5-2 with Phenix2.0
Mogul	:	2022.3.0, CSD as543be (2022)
Xtriage (Phenix)	:	2.0
EDS	:	3.0
Buster-report	:	wwPDB partial adaption of 1.1.7 (2018)
Percentile statistics	:	20250101.v01 (using entries in the PDB archive January 1st 2025)
CCP4	:	9.0.010 (Gargrove)
Density-Fitness	:	1.0.12
Ideal geometry (proteins)	:	Engh & Huber (2001)
Ideal geometry (DNA, RNA)	:	Parkinson et al. (1996)
Validation Pipeline (wwPDB-VP)	:	2.49

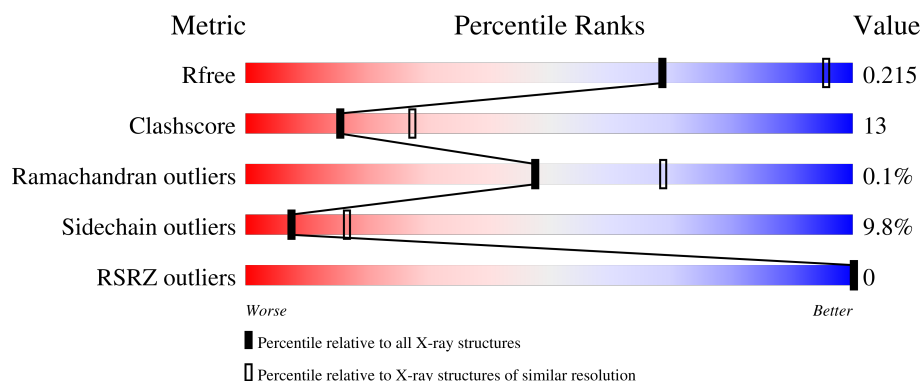
1 Overall quality at a glance

The following experimental techniques were used to determine the structure:

X-RAY DIFFRACTION

The reported resolution of this entry is 2.84 Å.

Percentile scores (ranging between 0-100) for global validation metrics of the entry are shown in the following graphic. The table shows the number of entries on which the scores are based.



Metric	Whole archive (#Entries)	Similar resolution (#Entries, resolution range(Å))
R_{free}	180053	1520 (2.86-2.82)
Clashscore	190562	1559 (2.86-2.82)
Ramachandran outliers	187476	1517 (2.86-2.82)
Sidechain outliers	187428	1518 (2.86-2.82)
RSRZ outliers	180081	1521 (2.86-2.82)

The table below summarises the geometric issues observed across the polymeric chains and their fit to the electron density. The red, orange, yellow and green segments of the lower bar indicate the fraction of residues that contain outliers for ≥ 3 , 2, 1 and 0 types of geometric quality criteria respectively. A grey segment represents the fraction of residues that are not modelled. The numeric value for each fraction is indicated below the corresponding segment, with a dot representing fractions $\leq 5\%$. The upper red bar (where present) indicates the fraction of residues that have poor fit to the electron density. The numeric value is given above the bar.

Mol	Chain	Length	Quality of chain
1	A	276	
1	B	276	
1	C	276	
1	D	276	

2 Entry composition [i](#)

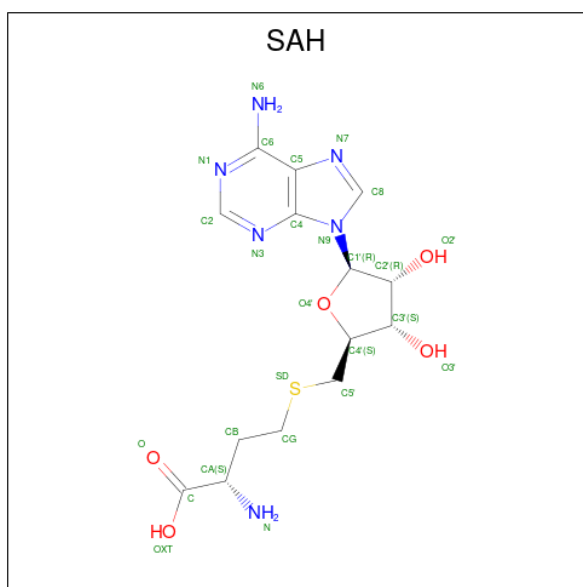
There are 5 unique types of molecules in this entry. The entry contains 8315 atoms, of which 0 are hydrogens and 0 are deuteriums.

In the tables below, the ZeroOcc column contains the number of atoms modelled with zero occupancy, the AltConf column contains the number of residues with at least one atom in alternate conformation and the Trace column contains the number of residues modelled with at most 2 atoms.

- Molecule 1 is a protein called juvenile hormone acid methyltransferase JHAMT.

Mol	Chain	Residues	Atoms					ZeroOcc	AltConf	Trace
1	A	247	Total	C	N	O	S	0	0	0
			2042	1315	342	375	10			
1	B	250	Total	C	N	O	S	0	0	0
			2066	1330	345	380	11			
1	C	245	Total	C	N	O	S	0	0	0
			2026	1306	339	372	9			
1	D	247	Total	C	N	O	S	0	0	0
			2043	1317	342	374	10			

- Molecule 2 is S-ADENOSYL-L-HOMOCYSTEINE (CCD ID: SAH) (formula: $C_{14}H_{20}N_6O_5S$) (labeled as "Ligand of Interest" by depositor).



Mol	Chain	Residues	Atoms					ZeroOcc	AltConf
2	A	1	Total	C	N	O	S	0	0
			26	14	6	5	1		
2	B	1	Total	C	N	O	S	0	0
			26	14	6	5	1		

Continued on next page...

Continued from previous page...

Mol	Chain	Residues	Atoms					ZeroOcc	AltConf
2	C	1	Total	C	N	O	S	0	0
			26	14	6	5	1		
2	D	1	Total	C	N	O	S	0	0
			26	14	6	5	1		

- Molecule 3 is CALCIUM ION (CCD ID: CA) (formula: Ca).

Mol	Chain	Residues	Atoms		ZeroOcc	AltConf
3	A	4	Total	Ca	0	0
			4	4		
3	B	6	Total	Ca	0	0
			6	6		
3	D	5	Total	Ca	0	0
			5	5		

- Molecule 4 is CHLORIDE ION (CCD ID: CL) (formula: Cl).

Mol	Chain	Residues	Atoms		ZeroOcc	AltConf
4	D	1	Total	Cl	0	0
			1	1		

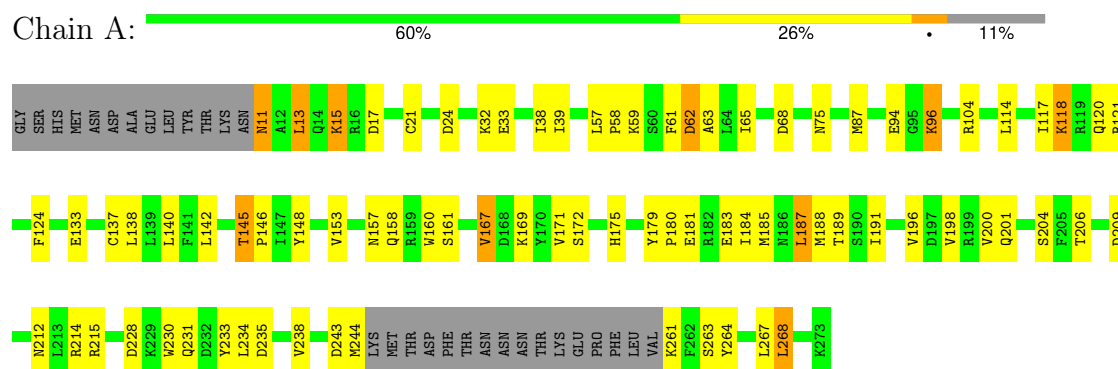
- Molecule 5 is water.

Mol	Chain	Residues	Atoms		ZeroOcc	AltConf
5	A	5	Total	O	0	0
			5	5		
5	B	4	Total	O	0	0
			4	4		
5	C	6	Total	O	0	0
			6	6		
5	D	3	Total	O	0	0
			3	3		

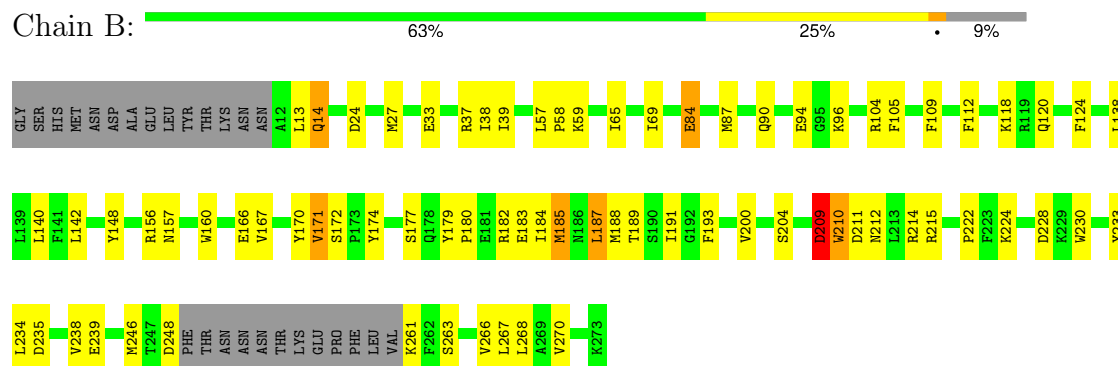
3 Residue-property plots [i](#)

These plots are drawn for all protein, RNA, DNA and oligosaccharide chains in the entry. The first graphic for a chain summarises the proportions of the various outlier classes displayed in the second graphic. The second graphic shows the sequence view annotated by issues in geometry and electron density. Residues are color-coded according to the number of geometric quality criteria for which they contain at least one outlier: green = 0, yellow = 1, orange = 2 and red = 3 or more. A red dot above a residue indicates a poor fit to the electron density ($RSRZ > 2$). Stretches of 2 or more consecutive residues without any outlier are shown as a green connector. Residues present in the sample, but not in the model, are shown in grey.

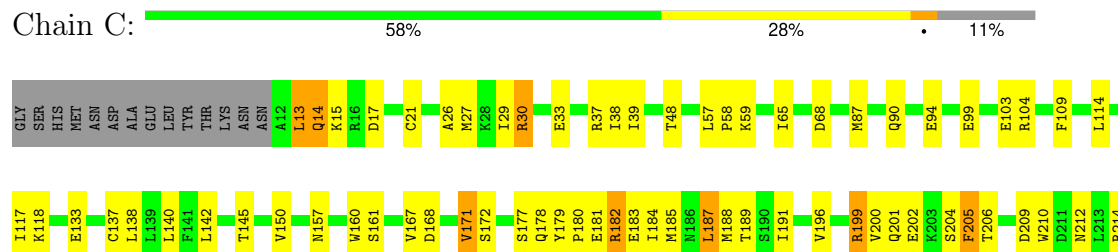
- Molecule 1: juvenile hormone acid methyltransferase JHAMT

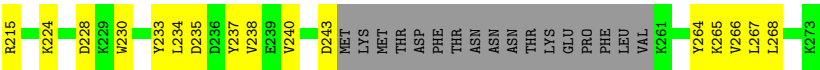


- Molecule 1: juvenile hormone acid methyltransferase JHAMT

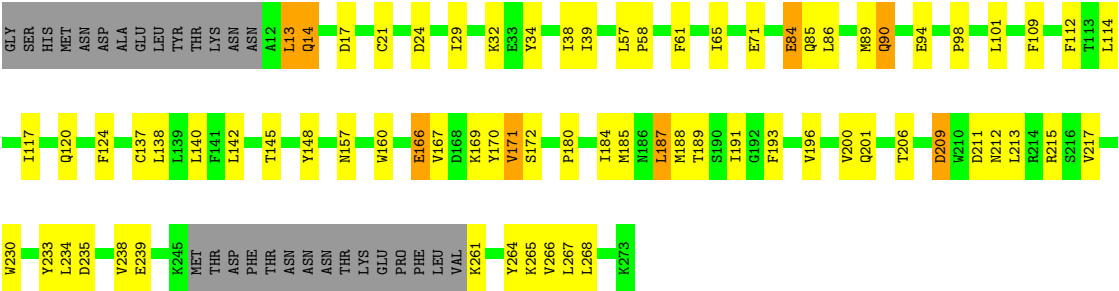


- Molecule 1: juvenile hormone acid methyltransferase JHAMT





● Molecule 1: juvenile hormone acid methyltransferase JHAMT



4 Data and refinement statistics

Property	Value	Source
Space group	P 1	Depositor
Cell constants a, b, c, α , β , γ	40.47Å 193.84Å 34.79Å 90.02° 90.13° 89.98°	Depositor
Resolution (Å)	48.46 – 2.84 48.46 – 2.84	Depositor EDS
% Data completeness (in resolution range)	89.5 (48.46-2.84) 89.5 (48.46-2.84)	Depositor EDS
R_{merge}	0.07	Depositor
R_{sym}	(Not available)	Depositor
$\langle I/\sigma(I) \rangle$ ¹	2.02 (at 2.86Å)	Xtriage
Refinement program	REFMAC 5.8.0238	Depositor
R, R_{free}	0.179 , 0.215 0.182 , 0.215	Depositor DCC
R_{free} test set	1142 reflections (4.57%)	wwPDB-VP
Wilson B-factor (Å ²)	41.9	Xtriage
Anisotropy	0.907	Xtriage
Bulk solvent k_{sol} (e/Å ³), B_{sol} (Å ²)	0.34 , 14.5	EDS
L-test for twinning ²	$\langle L \rangle = 0.45$, $\langle L^2 \rangle = 0.28$	Xtriage
Estimated twinning fraction	0.418 for -h,-k,l 0.417 for h,-k,-l 0.438 for -h,k,-l	Xtriage
F_o, F_c correlation	0.96	EDS
Total number of atoms	8315	wwPDB-VP
Average B, all atoms (Å ²)	45.0	wwPDB-VP

Xtriage's analysis on translational NCS is as follows: *The largest off-origin peak in the Patterson function is 7.55% of the height of the origin peak. No significant pseudotranslation is detected.*

¹Intensities estimated from amplitudes.

²Theoretical values of $\langle |L| \rangle$, $\langle L^2 \rangle$ for acentric reflections are 0.5, 0.333 respectively for untwinned datasets, and 0.375, 0.2 for perfectly twinned datasets.

5 Model quality ⓘ

5.1 Standard geometry ⓘ

Bond lengths and bond angles in the following residue types are not validated in this section: SAH, CA, CL

The Z score for a bond length (or angle) is the number of standard deviations the observed value is removed from the expected value. A bond length (or angle) with $|Z| > 5$ is considered an outlier worth inspection. RMSZ is the root-mean-square of all Z scores of the bond lengths (or angles).

Mol	Chain	Bond lengths		Bond angles	
		RMSZ	$\# Z > 5$	RMSZ	$\# Z > 5$
1	A	1.09	0/2089	1.49	5/2819 (0.2%)
1	B	1.05	0/2113	1.49	6/2850 (0.2%)
1	C	1.07	0/2073	1.49	3/2798 (0.1%)
1	D	1.04	0/2090	1.46	3/2819 (0.1%)
All	All	1.06	0/8365	1.48	17/11286 (0.2%)

There are no bond length outliers.

All (17) bond angle outliers are listed below:

Mol	Chain	Res	Type	Atoms	Z	Observed(°)	Ideal(°)
1	B	209	ASP	CA-C-N	7.41	130.51	120.44
1	B	209	ASP	C-N-CA	7.41	130.51	120.44
1	C	14	GLN	N-CA-C	-6.57	105.56	113.97
1	B	246	MET	N-CA-C	-6.32	105.43	112.57
1	C	182	ARG	CB-CA-C	-5.52	102.21	110.88
1	D	90	GLN	CB-CG-CD	-5.28	103.62	112.60
1	D	24	ASP	CB-CA-C	-5.24	100.58	110.01
1	D	193	PHE	CA-C-O	-5.23	115.86	121.56
1	B	210	TRP	N-CA-CB	-5.20	102.53	110.07
1	A	24	ASP	CB-CA-C	-5.15	100.33	110.11
1	A	145	THR	CA-C-N	5.14	124.80	119.56
1	A	145	THR	C-N-CA	5.14	124.80	119.56
1	B	193	PHE	CA-C-O	-5.09	116.01	121.56
1	B	24	ASP	CB-CA-C	-5.08	100.86	110.01
1	A	268	LEU	CA-C-O	-5.06	114.86	120.38
1	C	103	GLU	CB-CG-CD	5.06	121.20	112.60
1	A	243	ASP	CB-CA-C	-5.05	103.12	110.95

There are no chirality outliers.

There are no planarity outliers.

5.2 Too-close contacts ⓘ

In the following table, the Non-H and H(model) columns list the number of non-hydrogen atoms and hydrogen atoms in the chain respectively. The H(added) column lists the number of hydrogen atoms added and optimized by MolProbity. The Clashes column lists the number of clashes within the asymmetric unit, whereas Symm-Clashes lists symmetry-related clashes.

Mol	Chain	Non-H	H(model)	H(added)	Clashes	Symm-Clashes
1	A	2042	0	2015	62	0
1	B	2066	0	2042	51	0
1	C	2026	0	2000	61	0
1	D	2043	0	2022	53	0
2	A	26	0	19	1	0
2	B	26	0	19	0	0
2	C	26	0	19	1	0
2	D	26	0	19	0	0
3	A	4	0	0	0	0
3	B	6	0	0	0	0
3	D	5	0	0	0	0
4	D	1	0	0	0	0
5	A	5	0	0	1	0
5	B	4	0	0	0	0
5	C	6	0	0	1	0
5	D	3	0	0	0	0
All	All	8315	0	8155	221	0

The all-atom clashscore is defined as the number of clashes found per 1000 atoms (including hydrogen atoms). The all-atom clashscore for this structure is 13.

All (221) close contacts within the same asymmetric unit are listed below, sorted by their clash magnitude.

Atom-1	Atom-2	Interatomic distance (Å)	Clash overlap (Å)
1:B:179:TYR:O	1:B:183:GLU:HG3	1.43	1.19
1:B:138:LEU:HD11	1:B:268:LEU:HD11	1.46	0.96
1:C:138:LEU:HD11	1:C:268:LEU:HD11	1.49	0.95
1:A:138:LEU:HD11	1:A:268:LEU:HD11	1.49	0.93
1:C:180:PRO:O	1:C:184:ILE:HD12	1.69	0.92
1:D:211:ASP:O	1:D:215:ARG:HG3	1.69	0.92
1:B:211:ASP:O	1:B:215:ARG:HG3	1.69	0.92
1:D:138:LEU:HD11	1:D:268:LEU:HD11	1.54	0.90
1:C:30:ARG:HH11	1:C:30:ARG:CG	1.85	0.88
1:A:57:LEU:HB3	1:A:58:PRO:CD	2.06	0.85
1:A:138:LEU:CD1	1:A:268:LEU:HD11	2.09	0.83

Continued on next page...

Continued from previous page...

Atom-1	Atom-2	Interatomic distance (Å)	Clash overlap (Å)
1:D:148:TYR:CE1	1:D:170:TYR:O	2.32	0.83
1:B:138:LEU:CD1	1:B:268:LEU:HD11	2.11	0.81
1:B:180:PRO:O	1:B:184:ILE:HD12	1.84	0.77
1:C:138:LEU:CD1	1:C:268:LEU:HD11	2.14	0.77
1:D:180:PRO:O	1:D:184:ILE:HD12	1.85	0.76
1:D:138:LEU:CD1	1:D:268:LEU:HD11	2.15	0.75
1:A:181:GLU:HG3	1:A:200:VAL:HG23	1.69	0.75
1:C:15:LYS:HG2	1:C:48:THR:OG1	1.86	0.75
1:B:148:TYR:CD1	1:B:171:VAL:HG12	2.23	0.74
1:B:182:ARG:HA	1:B:185:MET:HE2	1.70	0.74
1:C:30:ARG:HH11	1:C:30:ARG:HG3	1.50	0.74
1:A:180:PRO:O	1:A:184:ILE:HD12	1.88	0.73
1:D:138:LEU:HD11	1:D:268:LEU:CD1	2.18	0.73
1:A:214:ARG:NH2	1:A:235:ASP:OD1	2.23	0.72
1:B:210:TRP:O	1:B:214:ARG:HG3	1.90	0.72
1:C:38:ILE:HD13	1:C:57:LEU:HD13	1.71	0.71
1:C:138:LEU:HD11	1:C:268:LEU:CD1	2.19	0.71
1:C:118:LYS:NZ	1:C:171:VAL:O	2.22	0.71
1:B:38:ILE:HD13	1:B:57:LEU:HD13	1.73	0.71
1:B:138:LEU:HD11	1:B:268:LEU:CD1	2.20	0.71
1:A:62:ASP:OD1	1:A:62:ASP:C	2.34	0.70
1:B:211:ASP:O	1:B:215:ARG:CG	2.39	0.69
1:D:38:ILE:HD13	1:D:57:LEU:HD13	1.73	0.69
1:A:57:LEU:HB3	1:A:58:PRO:HD2	1.74	0.68
1:C:30:ARG:HH11	1:C:30:ARG:HG2	1.58	0.68
1:D:187:LEU:HD12	1:D:191:ILE:HD11	1.76	0.68
1:D:212:ASN:OD1	1:D:215:ARG:NH2	2.27	0.68
1:A:138:LEU:HD11	1:A:268:LEU:CD1	2.21	0.67
1:D:209:ASP:OD1	1:D:209:ASP:N	2.24	0.66
1:C:187:LEU:HD12	1:C:191:ILE:HD11	1.78	0.66
1:D:148:TYR:CZ	1:D:170:TYR:O	2.49	0.65
1:D:212:ASN:OD1	1:D:215:ARG:NH1	2.29	0.65
1:A:38:ILE:HD13	1:A:57:LEU:HD13	1.80	0.64
1:B:187:LEU:HD12	1:B:191:ILE:HD11	1.80	0.63
1:A:187:LEU:HD12	1:A:191:ILE:HD11	1.79	0.63
1:C:200:VAL:HG22	1:C:267:LEU:HD23	1.81	0.63
1:D:185:MET:HG2	1:D:196:VAL:HG12	1.81	0.63
1:C:214:ARG:NH2	1:C:235:ASP:OD1	2.28	0.62
1:B:200:VAL:HG22	1:B:267:LEU:HD23	1.82	0.61
1:C:240:VAL:O	1:C:243:ASP:HB2	2.00	0.61
1:C:209:ASP:OD1	1:C:209:ASP:N	2.30	0.61

Continued on next page...

Continued from previous page...

Atom-1	Atom-2	Interatomic distance (Å)	Clash overlap (Å)
1:A:179:TYR:O	1:A:183:GLU:HG3	2.01	0.61
1:C:185:MET:HG2	1:C:196:VAL:HG12	1.83	0.61
1:D:200:VAL:HG22	1:D:267:LEU:HD23	1.84	0.60
1:A:68:ASP:OD2	2:A:301:SAH:H1'	2.01	0.60
1:C:57:LEU:HB3	1:C:58:PRO:CD	2.31	0.59
1:D:212:ASN:OD1	1:D:215:ARG:CZ	2.50	0.59
1:D:84:GLU:H	1:D:84:GLU:CD	2.11	0.59
1:C:199:ARG:HD2	5:C:401:HOH:O	2.03	0.58
1:D:187:LEU:CD1	1:D:191:ILE:HD11	2.32	0.58
1:A:187:LEU:CD1	1:A:191:ILE:HD11	2.34	0.58
1:A:185:MET:HG3	1:A:196:VAL:HG12	1.86	0.58
1:A:32:LYS:HG3	1:B:87:MET:HE1	1.84	0.57
1:D:235:ASP:O	1:D:239:GLU:HG2	2.04	0.57
1:D:138:LEU:CD1	1:D:268:LEU:CD1	2.80	0.57
1:C:13:LEU:HD11	1:C:205:PHE:HB3	1.86	0.57
1:D:61:PHE:O	1:D:85:GLN:NE2	2.37	0.57
1:C:30:ARG:CG	1:C:30:ARG:NH1	2.55	0.57
1:C:187:LEU:CD1	1:C:191:ILE:HD11	2.35	0.56
1:C:177:SER:OG	1:C:183:GLU:OE1	2.23	0.56
1:C:57:LEU:HB3	1:C:58:PRO:HD2	1.86	0.55
1:A:200:VAL:HG22	1:A:267:LEU:HD23	1.87	0.55
1:D:17:ASP:OD2	1:D:264:TYR:OH	2.22	0.55
1:B:187:LEU:CD1	1:B:191:ILE:HD11	2.37	0.55
1:A:133:GLU:O	1:B:84:GLU:CD	2.50	0.54
1:D:57:LEU:HB3	1:D:58:PRO:CD	2.37	0.54
1:C:37:ARG:NH2	1:C:104:ARG:HG2	2.23	0.54
1:C:210:TRP:CZ2	1:C:214:ARG:NE	2.74	0.53
1:C:30:ARG:HG3	1:C:30:ARG:NH1	2.21	0.53
1:C:138:LEU:CD1	1:C:268:LEU:CD1	2.84	0.53
1:A:167:VAL:O	1:A:171:VAL:HG23	2.08	0.53
1:C:168:ASP:HA	1:C:171:VAL:HB	1.92	0.52
1:A:142:LEU:O	1:A:172:SER:OG	2.22	0.52
1:D:14:GLN:NE2	1:D:112:PHE:HB3	2.24	0.52
1:A:133:GLU:O	1:B:84:GLU:OE2	2.27	0.52
1:C:37:ARG:NH2	1:C:104:ARG:CG	2.72	0.52
1:A:96:LYS:O	1:A:96:LYS:HG2	2.10	0.51
1:B:138:LEU:CD1	1:B:268:LEU:CD1	2.84	0.51
1:A:114:LEU:HD23	1:A:117:ILE:HD12	1.92	0.51
1:C:179:TYR:HB3	1:C:182:ARG:HD2	1.92	0.51
1:D:57:LEU:HB3	1:D:58:PRO:HD2	1.93	0.51
1:C:13:LEU:HD23	1:C:13:LEU:C	2.36	0.51

Continued on next page...

Continued from previous page...

Atom-1	Atom-2	Interatomic distance (Å)	Clash overlap (Å)
1:A:138:LEU:CD1	1:A:268:LEU:CD1	2.84	0.51
1:C:15:LYS:CG	1:C:48:THR:OG1	2.58	0.50
1:D:187:LEU:HD12	1:D:191:ILE:CD1	2.41	0.50
1:C:17:ASP:OD2	1:C:264:TYR:OH	2.25	0.50
1:C:13:LEU:CD1	1:C:205:PHE:HB3	2.41	0.50
1:D:142:LEU:O	1:D:172:SER:OG	2.25	0.49
1:A:17:ASP:OD2	1:A:264:TYR:OH	2.24	0.49
1:A:32:LYS:HG3	1:B:87:MET:CE	2.42	0.49
1:A:200:VAL:HG22	1:A:267:LEU:CD2	2.43	0.49
1:C:160:TRP:CZ2	1:C:233:TYR:HA	2.47	0.49
1:B:200:VAL:HG22	1:B:267:LEU:CD2	2.42	0.49
1:C:187:LEU:HD12	1:C:191:ILE:CD1	2.42	0.49
1:A:62:ASP:OD1	1:A:63:ALA:N	2.46	0.49
1:A:160:TRP:CZ2	1:A:233:TYR:HA	2.48	0.49
1:C:114:LEU:HD23	1:C:117:ILE:HD12	1.94	0.49
1:C:200:VAL:HG22	1:C:267:LEU:CD2	2.42	0.49
1:A:13:LEU:HD23	1:A:13:LEU:C	2.37	0.48
1:B:148:TYR:HD1	1:B:171:VAL:HG12	1.73	0.48
1:A:57:LEU:HB3	1:A:58:PRO:HD3	1.95	0.48
1:D:160:TRP:CZ2	1:D:233:TYR:HA	2.48	0.48
1:A:187:LEU:HD12	1:A:191:ILE:CD1	2.44	0.48
1:B:57:LEU:HB3	1:B:58:PRO:CD	2.44	0.48
1:B:248:ASP:HB2	1:B:261:LYS:HB3	1.96	0.47
1:A:209:ASP:OD2	1:A:212:ASN:HB2	2.14	0.47
1:D:200:VAL:HG22	1:D:267:LEU:CD2	2.43	0.47
1:B:65:ILE:HD13	1:B:105:PHE:CE1	2.49	0.47
1:A:120:GLN:O	1:A:124:PHE:HD2	1.97	0.47
1:C:184:ILE:O	1:C:188:MET:HG3	2.15	0.47
1:A:58:PRO:O	1:A:61:PHE:HD1	1.98	0.47
1:A:148:TYR:CE1	1:A:171:VAL:HA	2.50	0.47
1:D:206:THR:OG1	1:D:261:LYS:HB2	2.15	0.47
1:D:94:GLU:O	1:D:94:GLU:HG3	2.14	0.47
1:D:166:GLU:HB3	1:D:169:LYS:HG3	1.97	0.47
1:C:68:ASP:OD2	2:C:301:SAH:O3'	2.24	0.46
1:C:142:LEU:O	1:C:172:SER:OG	2.22	0.46
1:D:13:LEU:C	1:D:13:LEU:HD23	2.40	0.46
1:D:114:LEU:HD23	1:D:117:ILE:HD12	1.97	0.46
1:B:235:ASP:O	1:B:239:GLU:HG2	2.15	0.46
1:D:13:LEU:HD23	1:D:14:GLN:N	2.29	0.46
1:B:14:GLN:HG3	1:B:112:PHE:CG	2.51	0.46
1:B:187:LEU:HD12	1:B:191:ILE:CD1	2.45	0.46

Continued on next page...

Continued from previous page...

Atom-1	Atom-2	Interatomic distance (Å)	Clash overlap (Å)
1:C:181:GLU:HG2	1:C:182:ARG:N	2.29	0.46
1:B:160:TRP:CZ2	1:B:233:TYR:HA	2.50	0.46
1:D:137:CYS:O	1:D:137:CYS:SG	2.74	0.46
1:A:118:LYS:HE2	1:A:169:LYS:O	2.16	0.45
1:B:37:ARG:NH2	1:B:104:ARG:HG2	2.31	0.45
1:B:230:TRP:O	1:B:234:LEU:HG	2.17	0.45
1:D:98:PRO:HB2	1:D:101:LEU:HG	1.98	0.45
1:D:230:TRP:O	1:D:234:LEU:HG	2.16	0.45
1:D:187:LEU:HD12	1:D:187:LEU:C	2.42	0.45
1:D:148:TYR:OH	1:D:170:TYR:O	2.34	0.45
1:A:57:LEU:CB	1:A:58:PRO:CD	2.80	0.45
1:D:39:ILE:HA	1:D:65:ILE:O	2.17	0.45
1:D:71:GLU:HB2	1:D:90:GLN:NE2	2.31	0.45
1:B:142:LEU:O	1:B:172:SER:OG	2.22	0.45
1:C:13:LEU:HD23	1:C:13:LEU:O	2.17	0.45
1:B:214:ARG:NH2	1:B:235:ASP:OD1	2.43	0.44
1:A:230:TRP:O	1:A:234:LEU:HG	2.17	0.44
1:B:39:ILE:HA	1:B:65:ILE:O	2.17	0.44
1:B:120:GLN:O	1:B:124:PHE:HD2	2.00	0.44
1:B:69:ILE:O	1:B:90:GLN:NE2	2.50	0.44
1:A:121:ARG:NH2	5:A:401:HOH:O	2.48	0.44
1:A:187:LEU:HD12	1:A:187:LEU:C	2.43	0.44
1:A:153:VAL:CG2	1:A:244:MET:HE1	2.47	0.44
1:B:171:VAL:O	1:B:171:VAL:CG2	2.65	0.44
1:C:179:TYR:CB	1:C:182:ARG:HD2	2.47	0.44
1:A:146:PRO:HG3	1:A:263:SER:O	2.18	0.44
1:B:13:LEU:C	1:B:13:LEU:HD23	2.43	0.44
1:C:38:ILE:HD13	1:C:57:LEU:CD1	2.46	0.44
1:A:180:PRO:HG2	1:A:200:VAL:HG21	2.00	0.43
1:A:11:ASN:HD22	1:A:11:ASN:N	2.15	0.43
1:A:209:ASP:OD1	1:A:209:ASP:N	2.49	0.43
1:B:187:LEU:HD12	1:B:187:LEU:C	2.43	0.43
1:A:38:ILE:HD13	1:A:57:LEU:CD1	2.47	0.43
1:A:148:TYR:HB2	1:A:175:HIS:CE1	2.53	0.43
1:A:133:GLU:O	1:B:84:GLU:HG3	2.18	0.43
1:B:94:GLU:O	1:B:94:GLU:HG2	2.18	0.43
1:B:174:TYR:HA	1:B:177:SER:OG	2.18	0.43
1:C:39:ILE:HA	1:C:65:ILE:O	2.19	0.43
1:A:39:ILE:HA	1:A:65:ILE:O	2.19	0.43
1:A:206:THR:OG1	1:A:261:LYS:HB2	2.18	0.43
1:B:157:ASN:OD1	1:B:157:ASN:C	2.62	0.43

Continued on next page...

Continued from previous page...

Atom-1	Atom-2	Interatomic distance (Å)	Clash overlap (Å)
1:C:137:CYS:O	1:C:137:CYS:SG	2.77	0.43
1:D:213:LEU:O	1:D:217:VAL:HG23	2.18	0.43
1:A:137:CYS:O	1:A:137:CYS:SG	2.76	0.43
1:C:150:VAL:HG11	1:C:237:TYR:CE2	2.54	0.43
1:A:118:LYS:HD3	1:A:118:LYS:HA	1.80	0.42
1:B:140:LEU:HD12	1:B:267:LEU:O	2.19	0.42
1:C:140:LEU:HD12	1:C:267:LEU:O	2.18	0.42
1:B:170:TYR:CE1	1:B:222:PRO:HB2	2.55	0.42
1:C:187:LEU:HD12	1:C:187:LEU:C	2.45	0.42
1:A:184:ILE:O	1:A:188:MET:HG3	2.19	0.42
1:B:184:ILE:O	1:B:188:MET:HG3	2.19	0.42
1:C:94:GLU:O	1:C:94:GLU:HG3	2.20	0.42
1:C:133:GLU:O	1:D:84:GLU:HG2	2.20	0.42
1:D:209:ASP:OD2	1:D:212:ASN:HB2	2.20	0.42
1:A:15:LYS:HB3	1:A:15:LYS:HE3	1.67	0.42
1:C:230:TRP:O	1:C:234:LEU:HG	2.19	0.42
1:B:65:ILE:HD13	1:B:105:PHE:HE1	1.85	0.42
1:D:120:GLN:O	1:D:124:PHE:HD2	2.02	0.42
1:C:109:PHE:HA	1:C:138:LEU:O	2.20	0.41
1:D:38:ILE:HD13	1:D:57:LEU:CD1	2.47	0.41
1:B:109:PHE:HA	1:B:138:LEU:O	2.19	0.41
1:B:138:LEU:HD13	1:B:270:VAL:HG12	2.02	0.41
1:B:180:PRO:HG2	1:B:200:VAL:HG21	2.02	0.41
1:D:32:LYS:NZ	1:D:34:TYR:O	2.39	0.41
1:D:89:MET:HE3	1:D:89:MET:HB2	1.94	0.41
1:D:157:ASN:C	1:D:157:ASN:OD1	2.62	0.41
1:D:184:ILE:O	1:D:188:MET:HG3	2.20	0.41
1:A:140:LEU:HD12	1:A:267:LEU:O	2.21	0.41
1:C:26:ALA:HA	1:C:29:ILE:HD12	2.02	0.41
1:D:140:LEU:HD12	1:D:267:LEU:O	2.19	0.41
1:A:153:VAL:HG21	1:A:244:MET:HE1	2.03	0.41
1:C:150:VAL:HG11	1:C:237:TYR:CD2	2.56	0.41
1:C:30:ARG:HG2	1:C:30:ARG:NH1	2.27	0.41
1:A:157:ASN:OD1	1:A:157:ASN:C	2.64	0.41
1:B:209:ASP:OD1	1:B:212:ASN:HB2	2.19	0.41
1:C:157:ASN:OD1	1:C:157:ASN:C	2.63	0.41
1:D:109:PHE:HA	1:D:138:LEU:O	2.21	0.41
1:C:65:ILE:HA	1:C:87:MET:O	2.21	0.41
1:A:228:ASP:OD1	1:A:228:ASP:N	2.52	0.40
1:C:118:LYS:HD3	1:C:118:LYS:HA	1.93	0.40
1:B:38:ILE:HD13	1:B:57:LEU:CD1	2.48	0.40

Continued on next page...

Continued from previous page...

Atom-1	Atom-2	Interatomic distance (Å)	Clash overlap (Å)
1:C:202:GLU:HG3	1:C:265:LYS:HE2	2.03	0.40
1:D:180:PRO:HG2	1:D:200:VAL:HG21	2.03	0.40
1:A:94:GLU:O	1:A:94:GLU:HG3	2.20	0.40
1:A:104:ARG:HD2	1:A:104:ARG:HA	1.96	0.40
1:A:181:GLU:HG2	1:A:198:VAL:O	2.20	0.40

There are no symmetry-related clashes.

5.3 Torsion angles [i](#)

5.3.1 Protein backbone [i](#)

In the following table, the Percentiles column shows the percent Ramachandran outliers of the chain as a percentile score with respect to all X-ray entries followed by that with respect to entries of similar resolution.

The Analysed column shows the number of residues for which the backbone conformation was analysed, and the total number of residues.

Mol	Chain	Analysed	Favoured	Allowed	Outliers	Percentiles	
1	A	243/276 (88%)	227 (93%)	16 (7%)	0	100	100
1	B	246/276 (89%)	234 (95%)	12 (5%)	0	100	100
1	C	241/276 (87%)	231 (96%)	10 (4%)	0	100	100
1	D	243/276 (88%)	231 (95%)	11 (4%)	1 (0%)	30	48
All	All	973/1104 (88%)	923 (95%)	49 (5%)	1 (0%)	48	69

All (1) Ramachandran outliers are listed below:

Mol	Chain	Res	Type
1	D	171	VAL

5.3.2 Protein sidechains [i](#)

In the following table, the Percentiles column shows the percent sidechain outliers of the chain as a percentile score with respect to all X-ray entries followed by that with respect to entries of similar resolution.

The Analysed column shows the number of residues for which the sidechain conformation was analysed, and the total number of residues.

Mol	Chain	Analysed	Rotameric	Outliers	Percentiles	
1	A	222/249 (89%)	200 (90%)	22 (10%)	7	16
1	B	225/249 (90%)	204 (91%)	21 (9%)	8	19
1	C	220/249 (88%)	193 (88%)	27 (12%)	4	9
1	D	222/249 (89%)	205 (92%)	17 (8%)	12	26
All	All	889/996 (89%)	802 (90%)	87 (10%)	7	17

All (87) residues with a non-rotameric sidechain are listed below:

Mol	Chain	Res	Type
1	A	11	ASN
1	A	13	LEU
1	A	15	LYS
1	A	21	CYS
1	A	33	GLU
1	A	59	LYS
1	A	62	ASP
1	A	75	ASN
1	A	87	MET
1	A	96	LYS
1	A	118	LYS
1	A	145	THR
1	A	158	GLN
1	A	161	SER
1	A	167	VAL
1	A	187	LEU
1	A	189	THR
1	A	201	GLN
1	A	204	SER
1	A	215	ARG
1	A	231	GLN
1	A	238	VAL
1	B	14	GLN
1	B	27	MET
1	B	33	GLU
1	B	59	LYS
1	B	84	GLU
1	B	96	LYS
1	B	118	LYS
1	B	156	ARG
1	B	166	GLU
1	B	167	VAL
1	B	171	VAL

Continued on next page...

Continued from previous page...

Mol	Chain	Res	Type
1	B	185	MET
1	B	187	LEU
1	B	189	THR
1	B	204	SER
1	B	209	ASP
1	B	224	LYS
1	B	228	ASP
1	B	238	VAL
1	B	263	SER
1	B	266	VAL
1	C	13	LEU
1	C	14	GLN
1	C	21	CYS
1	C	27	MET
1	C	30	ARG
1	C	33	GLU
1	C	59	LYS
1	C	90	GLN
1	C	99	GLU
1	C	145	THR
1	C	161	SER
1	C	167	VAL
1	C	171	VAL
1	C	178	GLN
1	C	187	LEU
1	C	189	THR
1	C	199	ARG
1	C	201	GLN
1	C	204	SER
1	C	205	PHE
1	C	206	THR
1	C	212	ASN
1	C	215	ARG
1	C	224	LYS
1	C	228	ASP
1	C	238	VAL
1	C	266	VAL
1	D	13	LEU
1	D	14	GLN
1	D	21	CYS
1	D	29	ILE
1	D	84	GLU

Continued on next page...

Continued from previous page...

Mol	Chain	Res	Type
1	D	86	LEU
1	D	145	THR
1	D	166	GLU
1	D	167	VAL
1	D	171	VAL
1	D	187	LEU
1	D	189	THR
1	D	201	GLN
1	D	209	ASP
1	D	238	VAL
1	D	265	LYS
1	D	266	VAL

Sometimes sidechains can be flipped to improve hydrogen bonding and reduce clashes. All (11) such sidechains are listed below:

Mol	Chain	Res	Type
1	A	75	ASN
1	B	14	GLN
1	B	195	ASN
1	B	201	GLN
1	C	75	ASN
1	C	90	GLN
1	C	195	ASN
1	C	231	GLN
1	D	14	GLN
1	D	90	GLN
1	D	195	ASN

5.3.3 RNA ⓘ

There are no RNA molecules in this entry.

5.4 Non-standard residues in protein, DNA, RNA chains ⓘ

There are no non-standard protein/DNA/RNA residues in this entry.

5.5 Carbohydrates ⓘ

There are no oligosaccharides in this entry.

5.6 Ligand geometry

Of 20 ligands modelled in this entry, 16 are monoatomic - leaving 4 for Mogul analysis.

In the following table, the Counts columns list the number of bonds (or angles) for which Mogul statistics could be retrieved, the number of bonds (or angles) that are observed in the model and the number of bonds (or angles) that are defined in the Chemical Component Dictionary. The Link column lists molecule types, if any, to which the group is linked. The Z score for a bond length (or angle) is the number of standard deviations the observed value is removed from the expected value. A bond length (or angle) with $|Z| > 2$ is considered an outlier worth inspection. RMSZ is the root-mean-square of all Z scores of the bond lengths (or angles).

Mol	Type	Chain	Res	Link	Bond lengths			Bond angles		
					Counts	RMSZ	# Z > 2	Counts	RMSZ	# Z > 2
2	SAH	A	301	-	27,28,28	0.50	0	36,40,40	0.68	0
2	SAH	C	301	-	27,28,28	0.52	0	36,40,40	1.12	4 (11%)
2	SAH	D	301	-	27,28,28	0.59	0	36,40,40	1.20	4 (11%)
2	SAH	B	301	-	27,28,28	0.56	0	36,40,40	0.75	1 (2%)

In the following table, the Chirals column lists the number of chiral outliers, the number of chiral centers analysed, the number of these observed in the model and the number defined in the Chemical Component Dictionary. Similar counts are reported in the Torsion and Rings columns. '-' means no outliers of that kind were identified.

Mol	Type	Chain	Res	Link	Chirals	Torsions	Rings
2	SAH	A	301	-	-	3/15/31/31	0/3/3/3
2	SAH	C	301	-	-	2/15/31/31	0/3/3/3
2	SAH	D	301	-	-	2/15/31/31	0/3/3/3
2	SAH	B	301	-	-	3/15/31/31	0/3/3/3

There are no bond length outliers.

All (9) bond angle outliers are listed below:

Mol	Chain	Res	Type	Atoms	Z	Observed(°)	Ideal(°)
2	C	301	SAH	CB-CG-SD	-3.58	105.45	113.45
2	D	301	SAH	O4'-C1'-C2'	-3.21	99.74	106.62
2	D	301	SAH	O2'-C2'-C3'	-2.95	102.37	111.82
2	D	301	SAH	CB-CG-SD	-2.62	107.60	113.45
2	D	301	SAH	O2'-C2'-C1'	2.51	118.73	110.10
2	C	301	SAH	O4'-C1'-C2'	-2.40	101.49	106.62
2	C	301	SAH	O3'-C3'-C2'	-2.24	104.64	111.82
2	B	301	SAH	CB-CG-SD	-2.13	108.69	113.45
2	C	301	SAH	C3'-C2'-C1'	-2.02	97.64	101.46

There are no chirality outliers.

All (10) torsion outliers are listed below:

Mol	Chain	Res	Type	Atoms
2	A	301	SAH	N-CA-CB-CG
2	A	301	SAH	C-CA-CB-CG
2	B	301	SAH	N-CA-CB-CG
2	B	301	SAH	C-CA-CB-CG
2	C	301	SAH	C-CA-CB-CG
2	A	301	SAH	CB-CG-SD-C5'
2	B	301	SAH	CB-CG-SD-C5'
2	D	301	SAH	CB-CG-SD-C5'
2	D	301	SAH	C-CA-CB-CG
2	C	301	SAH	CB-CG-SD-C5'

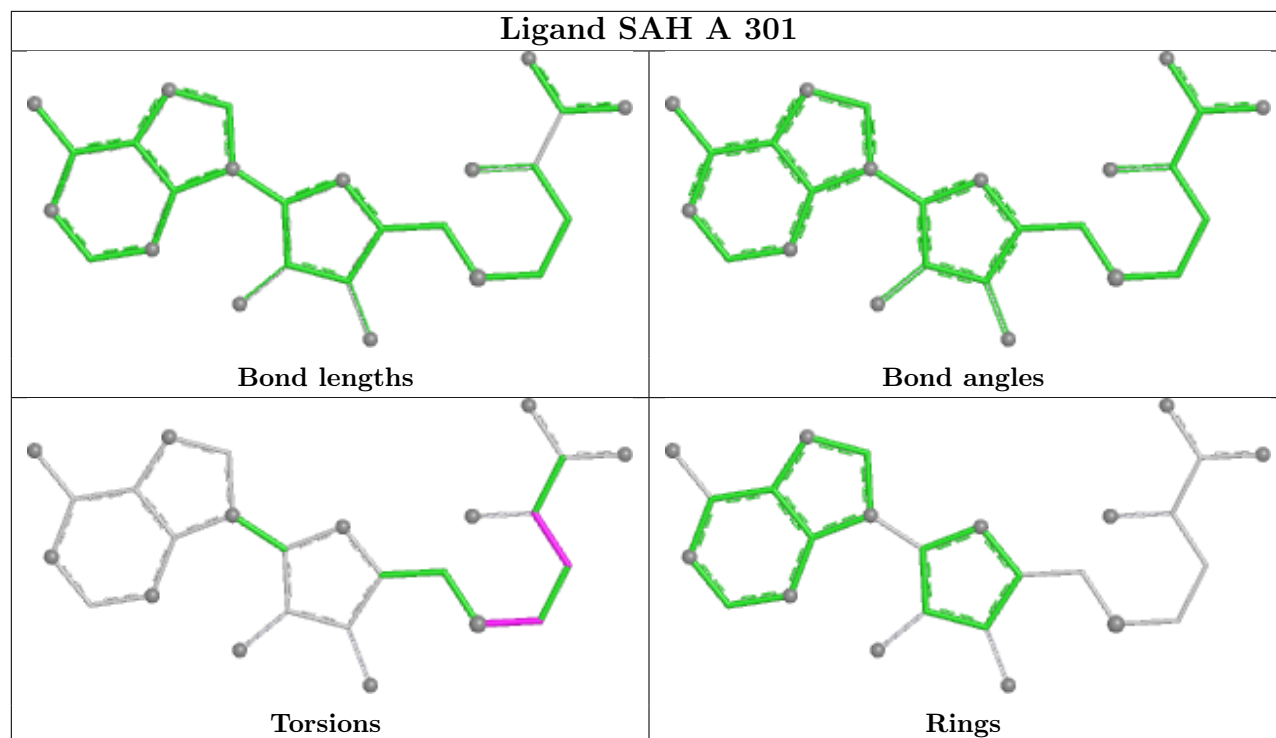
There are no ring outliers.

2 monomers are involved in 2 short contacts:

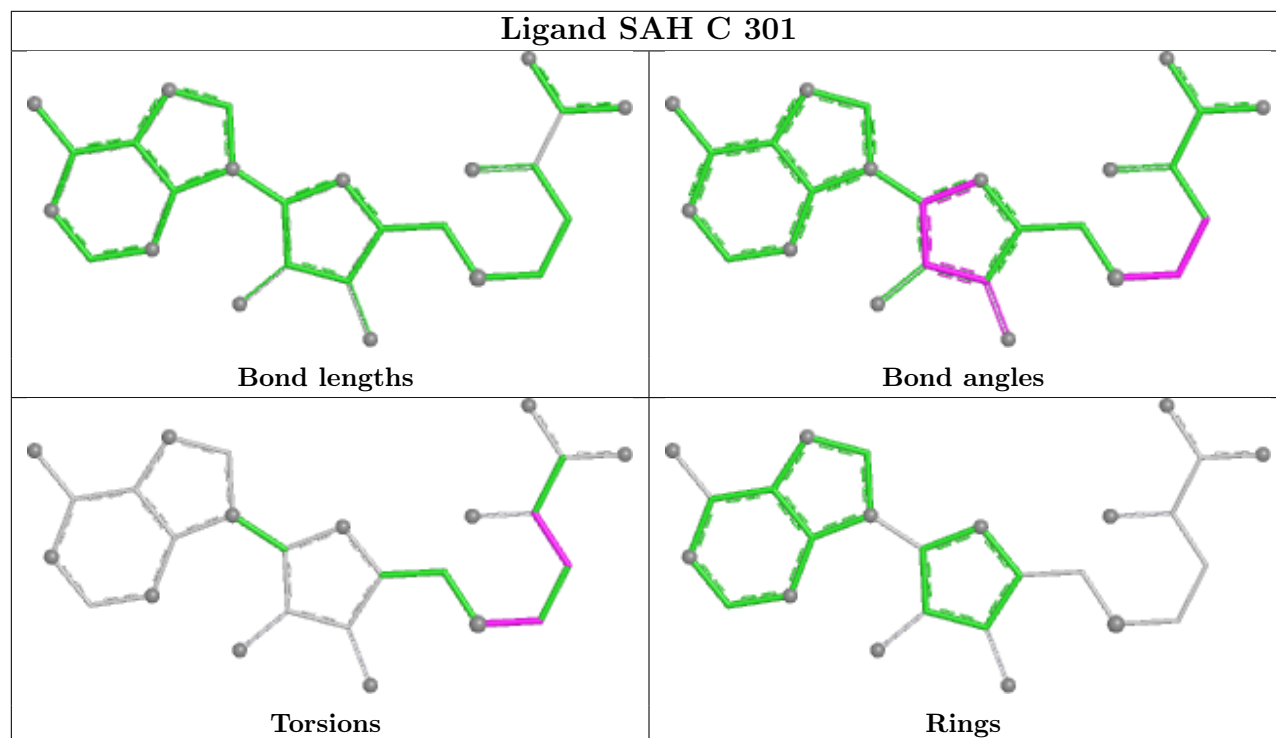
Mol	Chain	Res	Type	Clashes	Symm-Clashes
2	A	301	SAH	1	0
2	C	301	SAH	1	0

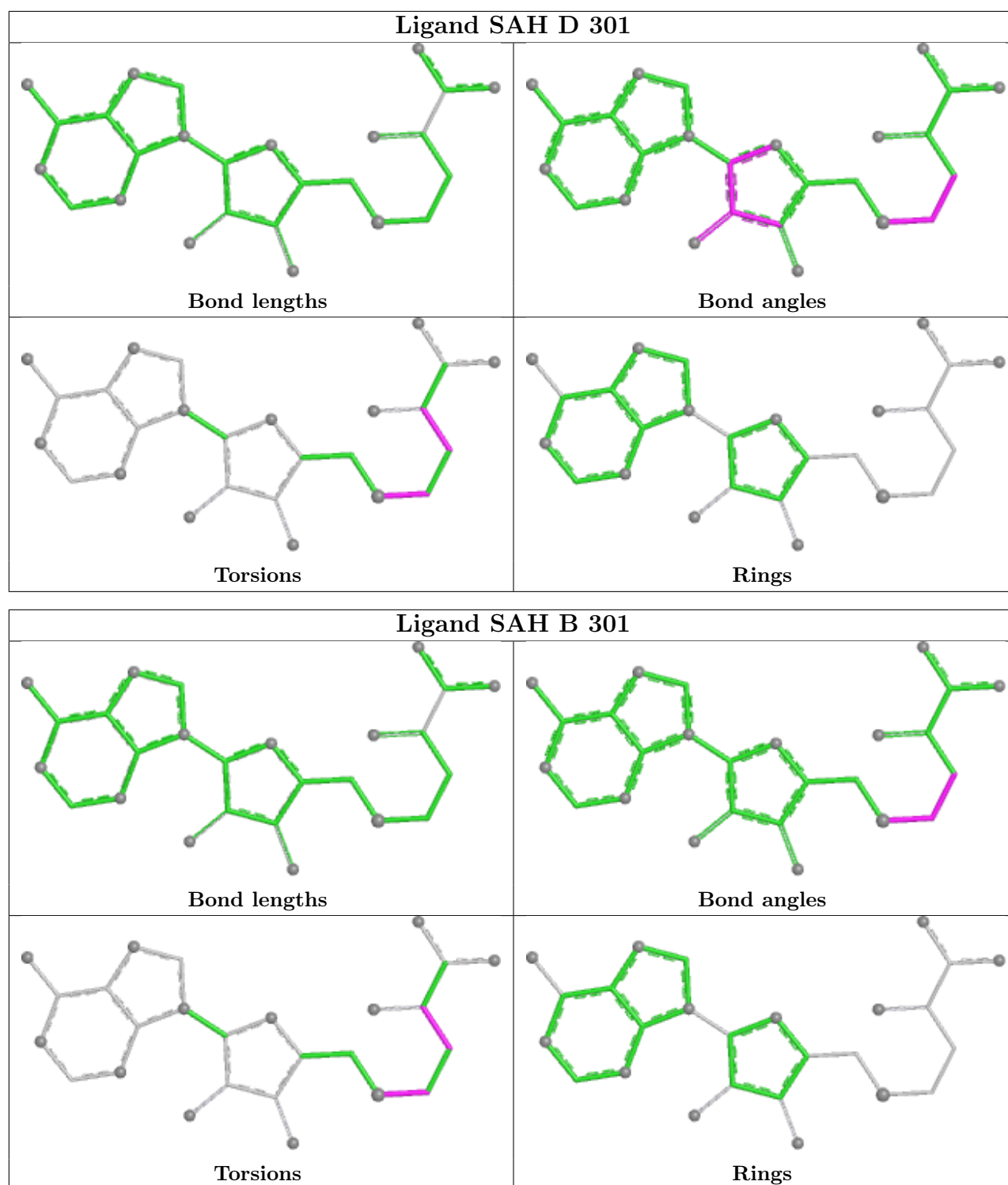
The following is a two-dimensional graphical depiction of Mogul quality analysis of bond lengths, bond angles, torsion angles, and ring geometry for all instances of the Ligand of Interest. In addition, ligands with molecular weight > 250 and outliers as shown on the validation Tables will also be included. For torsion angles, if less than 5% of the Mogul distribution of torsion angles is within 10 degrees of the torsion angle in question, then that torsion angle is considered an outlier. Any bond that is central to one or more torsion angles identified as an outlier by Mogul will be highlighted in the graph. For rings, the root-mean-square deviation (RMSD) between the ring in question and similar rings identified by Mogul is calculated over all ring torsion angles. If the average RMSD is greater than 60 degrees and the minimal RMSD between the ring in question and any Mogul-identified rings is also greater than 60 degrees, then that ring is considered an outlier. The outliers are highlighted in purple. The color gray indicates Mogul did not find sufficient equivalents in the CSD to analyse the geometry.

Ligand SAH A 301



Ligand SAH C 301





5.7 Other polymers [i](#)

There are no such residues in this entry.

5.8 Polymer linkage issues ⓘ

There are no chain breaks in this entry.

6 Fit of model and data [i](#)

6.1 Protein, DNA and RNA chains [i](#)

In the following table, the column labelled ‘#RSRZ> 2’ contains the number (and percentage) of RSRZ outliers, followed by percent RSRZ outliers for the chain as percentile scores relative to all X-ray entries and entries of similar resolution. The OWAB column contains the minimum, median, 95th percentile and maximum values of the occupancy-weighted average B-factor per residue. The column labelled ‘Q< 0.9’ lists the number of (and percentage) of residues with an average occupancy less than 0.9.

Mol	Chain	Analysed	<RSRZ>	#RSRZ>2	OWAB(Å ²)	Q<0.9
1	A	247/276 (89%)	-1.52	0 100 100	18, 44, 78, 106	0
1	B	250/276 (90%)	-1.52	0 100 100	18, 44, 69, 122	0
1	C	245/276 (88%)	-1.54	0 100 100	15, 39, 78, 124	0
1	D	247/276 (89%)	-1.54	0 100 100	16, 41, 65, 89	0
All	All	989/1104 (89%)	-1.53	0 100 100	15, 42, 75, 124	0

There are no RSRZ outliers to report.

6.2 Non-standard residues in protein, DNA, RNA chains [i](#)

There are no non-standard protein/DNA/RNA residues in this entry.

6.3 Carbohydrates [i](#)

There are no oligosaccharides in this entry.

6.4 Ligands [i](#)

In the following table, the Atoms column lists the number of modelled atoms in the group and the number defined in the chemical component dictionary. The B-factors column lists the minimum, median, 95th percentile and maximum values of B factors of atoms in the group. The column labelled ‘Q< 0.9’ lists the number of atoms with occupancy less than 0.9.

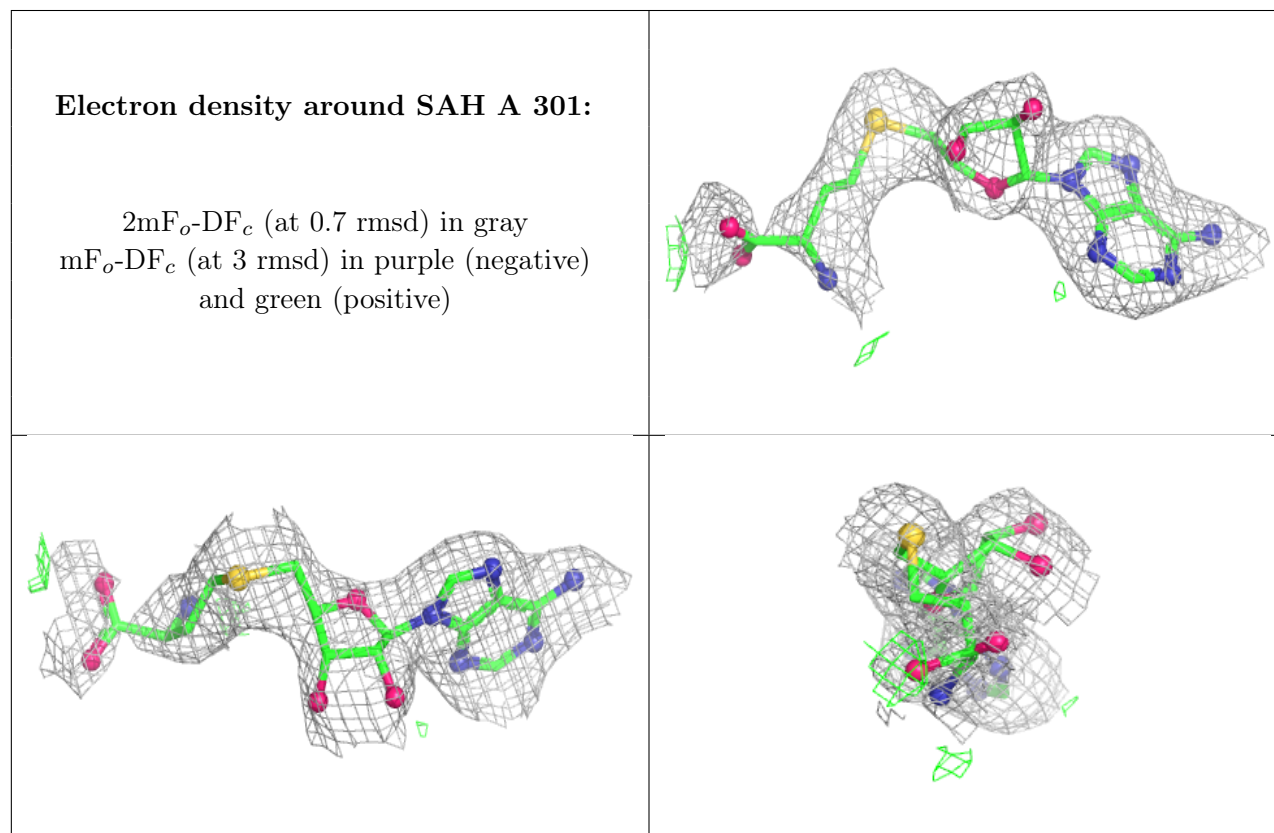
Mol	Type	Chain	Res	Atoms	RSCC	RSR	B-factors(Å ²)	Q<0.9
2	SAH	A	301	26/26	0.99	0.03	25,38,56,57	0
2	SAH	B	301	26/26	0.99	0.03	21,36,55,60	0
2	SAH	C	301	26/26	0.99	0.03	25,32,45,55	0
2	SAH	D	301	26/26	0.99	0.03	16,26,39,39	0

Continued on next page...

Continued from previous page...

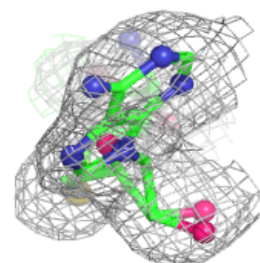
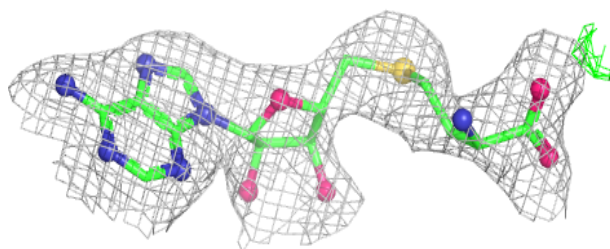
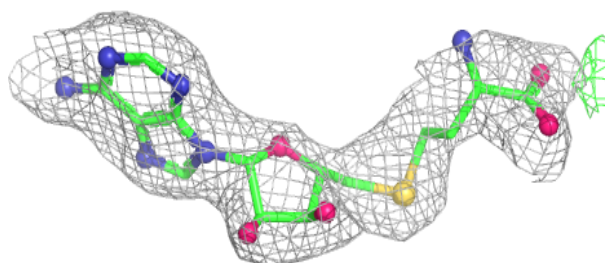
Mol	Type	Chain	Res	Atoms	RSCC	RSR	B-factors(\AA^2)	Q<0.9
3	CA	B	303	1/1	0.99	0.03	35,35,35,35	0
3	CA	B	305	1/1	0.99	0.02	36,36,36,36	0
3	CA	A	304	1/1	1.00	0.01	39,39,39,39	0
3	CA	A	305	1/1	1.00	0.01	30,30,30,30	0
3	CA	B	302	1/1	1.00	0.03	35,35,35,35	0
3	CA	A	302	1/1	1.00	0.02	19,19,19,19	0
3	CA	B	304	1/1	1.00	0.03	30,30,30,30	0
3	CA	A	303	1/1	1.00	0.01	32,32,32,32	0
3	CA	B	306	1/1	1.00	0.02	29,29,29,29	0
3	CA	B	307	1/1	1.00	0.01	40,40,40,40	0
3	CA	D	302	1/1	1.00	0.02	34,34,34,34	0
3	CA	D	303	1/1	1.00	0.02	36,36,36,36	0
3	CA	D	304	1/1	1.00	0.02	29,29,29,29	0
3	CA	D	305	1/1	1.00	0.01	42,42,42,42	0
3	CA	D	306	1/1	1.00	0.03	47,47,47,47	0
4	CL	D	307	1/1	1.00	0.01	24,24,24,24	0

The following is a graphical depiction of the model fit to experimental electron density of all instances of the Ligand of Interest. In addition, ligands with molecular weight > 250 and outliers as shown on the geometry validation Tables will also be included. Each fit is shown from different orientation to approximate a three-dimensional view.

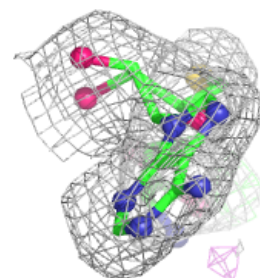
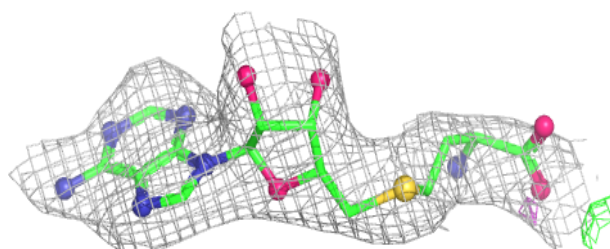
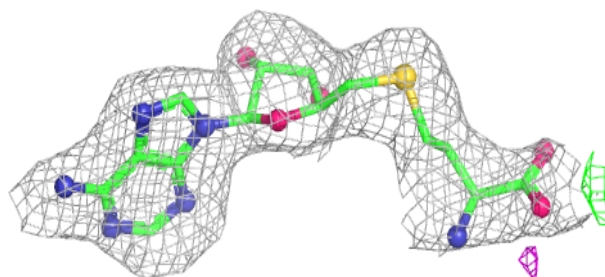


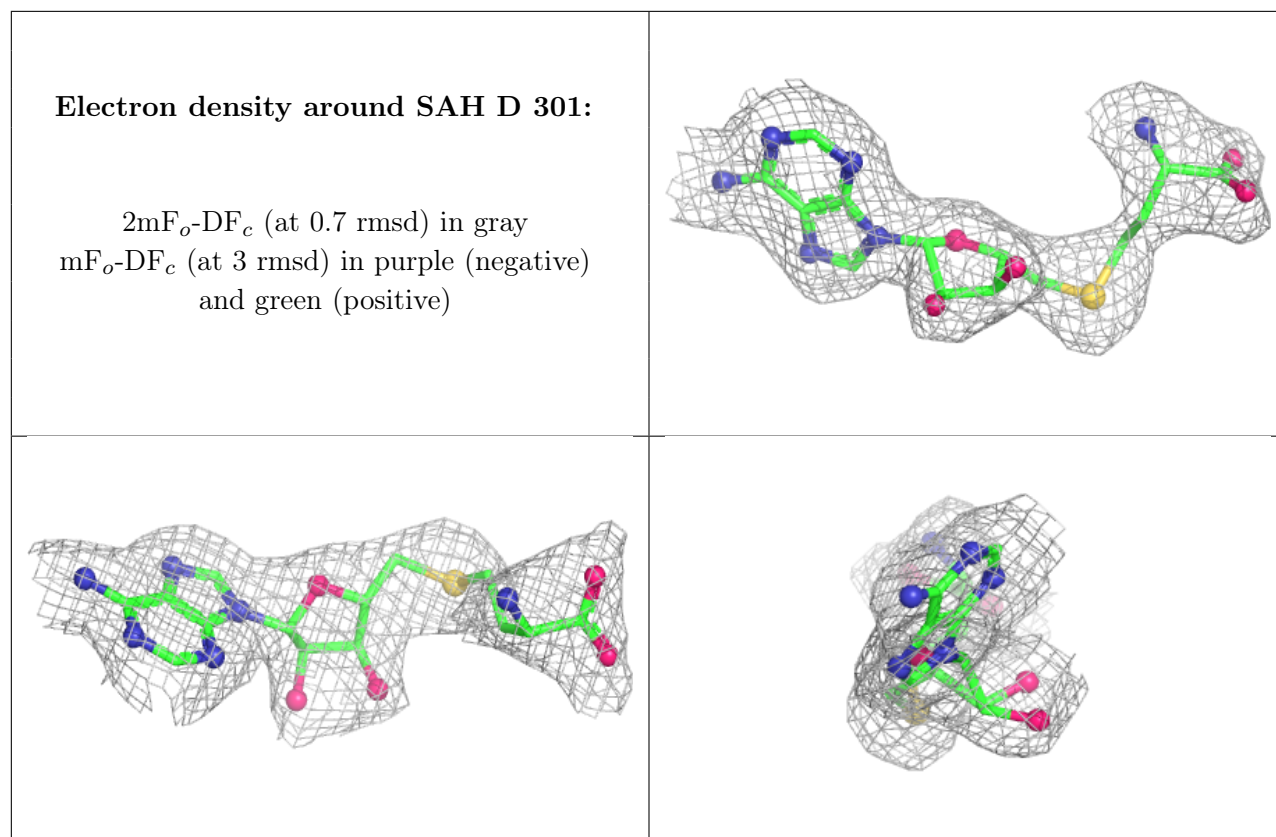
Electron density around SAH B 301:

$2mF_o-DF_c$ (at 0.7 rmsd) in gray
 mF_o-DF_c (at 3 rmsd) in purple (negative)
and green (positive)

**Electron density around SAH C 301:**

$2mF_o-DF_c$ (at 0.7 rmsd) in gray
 mF_o-DF_c (at 3 rmsd) in purple (negative)
and green (positive)





6.5 Other polymers [i](#)

There are no such residues in this entry.