



Full wwPDB EM Validation Report ⓘ

May 21, 2026 – 12:10 PM JST

PDB ID : 9W65 / pdb_00009w65
EMDB ID : EMD-65677
Title : Cryo-EM structure of ATP bound state human ABCD3 in inward-facing conformation
Authors : Aiba, S.; Okamoto, H.H.; Sano, K.F.; Kusakizako, T.; Nureki, O.
Deposited on : 2025-08-03
Resolution : 2.94 Å(reported)

This is a Full wwPDB EM Validation Report for a publicly released PDB entry.

We welcome your comments at validation@mail.wwpdb.org

A user guide is available at

<https://www.wwpdb.org/validation/2017/EMValidationReportHelp>
with specific help available everywhere you see the ⓘ symbol.

The types of validation reports are described at

<http://www.wwpdb.org/validation/2017/FAQs#types>.

The following versions of software and data (see [references ⓘ](#)) were used in the production of this report:

EMDB validation analysis : 0.0.1.dev132
Mogul : 1.8.5 (274361), CSD as541be (2020)
MolProbity : 4-5-2 with Phenix2.0
Buster-report : wwPDB partial adaption of 1.1.7 (2018)
Percentile statistics : 20250101.v01 (using entries in the PDB archive January 1st 2025)
EM percentile statistics : 202505.v01 (Using data in the EMDB archive up until May 2025)
MapQ : 1.9.13
Ideal geometry (proteins) : Engh & Huber (2001)
Ideal geometry (DNA, RNA) : Parkinson et al. (1996)
Validation Pipeline (wwPDB-VP) : 2.49

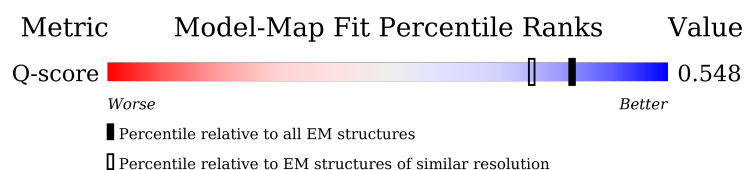
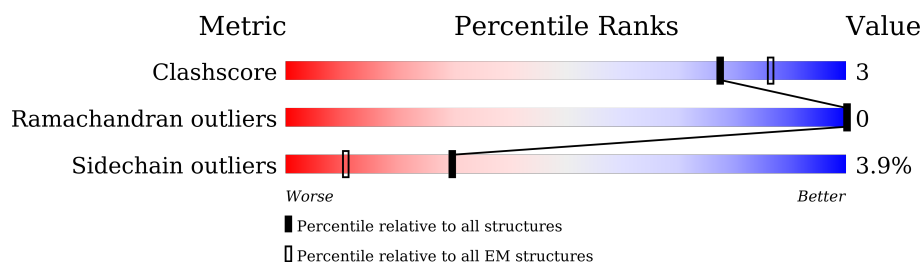
1 Overall quality at a glance

The following experimental techniques were used to determine the structure:

ELECTRON MICROSCOPY

The reported resolution of this entry is 2.94 Å.

Percentile scores (ranging between 0-100) for global validation metrics of the entry are shown in the following graphic. The table shows the number of entries on which the scores are based.



Metric	Whole archive (#Entries)	EM structures (#Entries)	Similar EM resolution (#Entries, resolution range(Å))
Clashscore	229148	23984	-
Ramachandran outliers	224038	23583	-
Sidechain outliers	223484	23102	-
Q-score	-	25397	13068 (2.44 - 3.44)

The table below summarises the geometric issues observed across the polymeric chains and their fit to the map. The red, orange, yellow and green segments of the bar indicate the fraction of residues that contain outliers for ≥ 3 , 2, 1 and 0 types of geometric quality criteria respectively. A grey segment represents the fraction of residues that are not modelled. The numeric value for each fraction is indicated below the corresponding segment, with a dot representing fractions $\leq 5\%$. The upper red bar (where present) indicates the fraction of residues that have poor fit to the EM map (all-atom inclusion $< 40\%$). The numeric value is given above the bar.

Mol	Chain	Length	Quality of chain
1	A	914	

2 Entry composition

There are 4 unique types of molecules in this entry. The entry contains 4794 atoms, of which 0 are hydrogens and 0 are deuteriums.

In the tables below, the AltConf column contains the number of residues with at least one atom in alternate conformation and the Trace column contains the number of residues modelled with at most 2 atoms.

- Molecule 1 is a protein called ATP-binding cassette sub-family D member 3, Green fluorescent protein.

Mol	Chain	Residues	Atoms					AltConf	Trace
1	A	575	Total	C	N	O	S	0	0
			4674	3014	810	823	27		

There are 23 discrepancies between the modelled and reference sequences:

Chain	Residue	Modelled	Actual	Comment	Reference
A	596	GLN	GLU	engineered mutation	UNP P28288
A	660	LEU	-	linker	UNP P28288
A	661	GLU	-	linker	UNP P28288
A	662	VAL	-	linker	UNP P28288
A	663	LEU	-	linker	UNP P28288
A	664	PHE	-	linker	UNP P28288
A	665	GLN	-	linker	UNP P28288
A	666	GLY	-	linker	UNP P28288
A	667	PRO	-	linker	UNP P28288
A	668	ALA	-	linker	UNP P28288
A	669	VAL	MET	conflict	UNP P42212
A	732	LEU	PHE	conflict	UNP P42212
A	733	THR	SER	conflict	UNP P42212
A	874	LYS	ALA	conflict	UNP P42212
A	899	LEU	HIS	conflict	UNP P42212
A	907	HIS	-	expression tag	UNP P42212
A	908	HIS	-	expression tag	UNP P42212
A	909	HIS	-	expression tag	UNP P42212
A	910	HIS	-	expression tag	UNP P42212
A	911	HIS	-	expression tag	UNP P42212
A	912	HIS	-	expression tag	UNP P42212
A	913	HIS	-	expression tag	UNP P42212
A	914	HIS	-	expression tag	UNP P42212

- Molecule 2 is ADENOSINE-5'-TRIPHOSPHATE (CCD ID: ATP) (formula: $C_{10}H_{16}N_5O_{13}P_3$) (labeled as "Ligand of Interest" by depositor).



Mol	Chain	Residues	Atoms					AltConf
2	A	1	Total	C	N	O	P	0
			31	10	5	13	3	
2	A	1	Total	C	N	O	P	0
			31	10	5	13	3	

- Molecule 3 is MAGNESIUM ION (CCD ID: MG) (formula: Mg) (labeled as "Ligand of Interest" by depositor).

Mol	Chain	Residues	Atoms		AltConf
3	A	2	Total	Mg	0
			2	2	

- Molecule 4 is CHOLESTEROL (CCD ID: CLR) (formula: C₂₇H₄₆O).

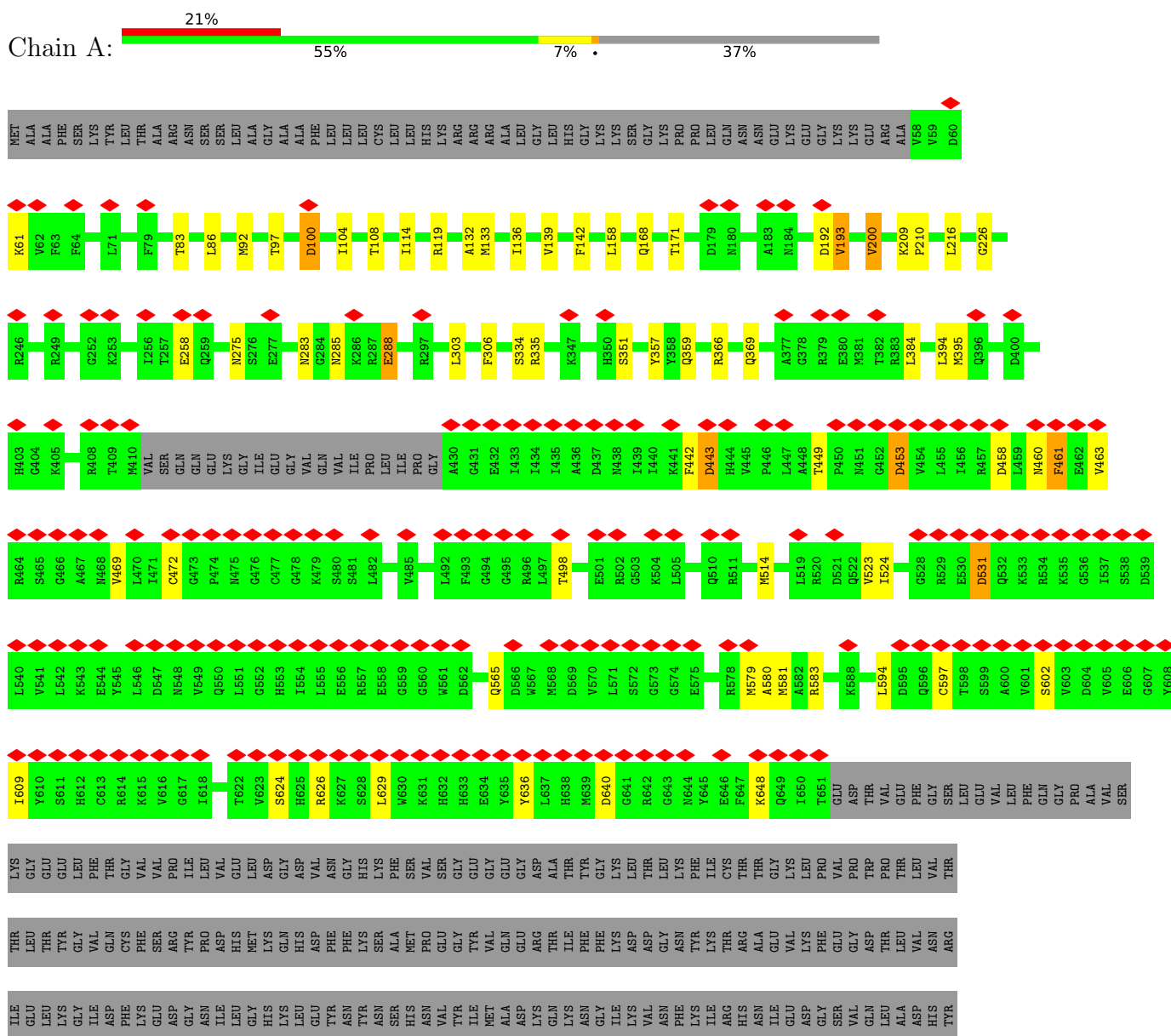


Mol	Chain	Residues	Atoms			AltConf
4	A	1	Total	C	O	0
			28	27	1	
4	A	1	Total	C	O	0
			28	27	1	

3 Residue-property plots

These plots are drawn for all protein, RNA, DNA and oligosaccharide chains in the entry. The first graphic for a chain summarises the proportions of the various outlier classes displayed in the second graphic. The second graphic shows the sequence view annotated by issues in geometry and atom inclusion in map density. Residues are color-coded according to the number of geometric quality criteria for which they contain at least one outlier: green = 0, yellow = 1, orange = 2 and red = 3 or more. A red diamond above a residue indicates a poor fit to the EM map for this residue (all-atom inclusion < 40%). Stretches of 2 or more consecutive residues without any outlier are shown as a green connector. Residues present in the sample, but not in the model, are shown in grey.

- Molecule 1: ATP-binding cassette sub-family D member 3, Green fluorescent protein



GLN
GLN
ASN
THR
PRO
ILE
GLY
ASP
GLY
PRO
VAL
LEU
LEU
PRO
ASP
ASN
HIS
TYR
LEU
SER
THR
GLN
SER
LYS
LEU
SER
LYS
ASP
PRO
ASN
GLU
LYS
ARG
ASP
HIS
MET
VAL
LEU
LEU
GLU
PHE
VAL
THR
ALA
ALA
GLY
ILE
THR
LEU
GLY
MET
ASP
GLU
LEU
TYR
LYS
HIS
HIS
HIS

HIS
HIS
HIS
HIS

4 Experimental information

Property	Value	Source
EM reconstruction method	SINGLE PARTICLE	Depositor
Imposed symmetry	POINT, C2	Depositor
Number of particles used	65336	Depositor
Resolution determination method	FSC 0.143 CUT-OFF	Depositor
CTF correction method	PHASE FLIPPING AND AMPLITUDE CORRECTION	Depositor
Microscope	TFS KRIOS	Depositor
Voltage (kV)	300	Depositor
Electron dose ($e^-/\text{\AA}^2$)	50	Depositor
Minimum defocus (nm)	800	Depositor
Maximum defocus (nm)	1600	Depositor
Magnification	Not provided	
Image detector	GATAN K3 (6k x 4k)	Depositor
Maximum map value	10.503	Depositor
Minimum map value	-6.797	Depositor
Average map value	0.002	Depositor
Map value standard deviation	0.587	Depositor
Recommended contour level	2.2	Depositor
Map size (Å)	126.16004, 141.65338, 159.36005	wwPDB
Map dimensions	114, 128, 144	wwPDB
Map angles (°)	90.0, 90.0, 90.0	wwPDB
Pixel spacing (Å)	1.106667, 1.106667, 1.106667	Depositor

5 Model quality

5.1 Standard geometry

Bond lengths and bond angles in the following residue types are not validated in this section: CLR, MG, ATP

The Z score for a bond length (or angle) is the number of standard deviations the observed value is removed from the expected value. A bond length (or angle) with $|Z| > 5$ is considered an outlier worth inspection. RMSZ is the root-mean-square of all Z scores of the bond lengths (or angles).

Mol	Chain	Bond lengths		Bond angles	
		RMSZ	$\# Z > 5$	RMSZ	$\# Z > 5$
1	A	0.71	0/4774	1.34	14/6438 (0.2%)

Chiral center outliers are detected by calculating the chiral volume of a chiral center and verifying if the center is modelled as a planar moiety or with the opposite hand. A planarity outlier is detected by checking planarity of atoms in a peptide group, atoms in a mainchain group or atoms of a sidechain that are expected to be planar.

Mol	Chain	#Chirality outliers	#Planarity outliers
1	A	0	1

There are no bond length outliers.

All (14) bond angle outliers are listed below:

Mol	Chain	Res	Type	Atoms	Z	Observed(°)	Ideal(°)
1	A	114	ILE	N-CA-C	-8.62	103.43	111.45
1	A	461	PHE	CA-CB-CG	7.58	121.38	113.80
1	A	640	ASP	CA-CB-CG	5.95	118.55	112.60
1	A	193	VAL	N-CA-C	-5.87	106.76	111.81
1	A	306	PHE	CA-CB-CG	5.69	119.49	113.80
1	A	226	GLY	CA-C-O	-5.59	118.11	122.52
1	A	453	ASP	CA-CB-CG	5.55	118.15	112.60
1	A	443	ASP	CA-CB-CG	5.47	118.07	112.60
1	A	442	PHE	CA-CB-CG	5.46	119.26	113.80
1	A	288	GLU	CB-CG-CD	5.39	121.77	112.60
1	A	192	ASP	CA-CB-CG	5.36	117.96	112.60
1	A	136	ILE	N-CA-CB	5.35	116.24	110.62
1	A	531	ASP	CA-CB-CG	5.35	117.95	112.60
1	A	119	ARG	N-CA-CB	5.04	117.53	110.12

There are no chirality outliers.

All (1) planarity outliers are listed below:

Mol	Chain	Res	Type	Group
1	A	524	ILE	Peptide

5.2 Too-close contacts [i](#)

In the following table, the Non-H and H(model) columns list the number of non-hydrogen atoms and hydrogen atoms in the chain respectively. The H(added) column lists the number of hydrogen atoms added and optimized by MolProbity. The Clashes column lists the number of clashes within the asymmetric unit, whereas Symm-Clashes lists symmetry-related clashes.

Mol	Chain	Non-H	H(model)	H(added)	Clashes	Symm-Clashes
1	A	4674	0	4757	28	0
2	A	62	0	24	1	0
3	A	2	0	0	0	0
4	A	56	0	92	2	0
All	All	4794	0	4873	28	0

The all-atom clashscore is defined as the number of clashes found per 1000 atoms (including hydrogen atoms). The all-atom clashscore for this structure is 3.

All (28) close contacts within the same asymmetric unit are listed below, sorted by their clash magnitude.

Atom-1	Atom-2	Interatomic distance (Å)	Clash overlap (Å)
1:A:626:ARG:HB2	1:A:629:LEU:HD12	1.71	0.71
1:A:369:GLN:OE1	2:A:1001:ATP:N6	2.27	0.68
1:A:624:SER:HB2	1:A:629:LEU:HD13	1.82	0.61
1:A:514:MET:HE1	1:A:579:MET:HG2	1.90	0.53
1:A:209:LYS:HB2	1:A:210:PRO:HD3	1.91	0.53
1:A:463:VAL:HG22	1:A:469:VAL:HG21	1.94	0.50
1:A:86:LEU:HD21	4:A:1005:CLR:H262	1.93	0.50
1:A:357:TYR:CD2	1:A:357:TYR:C	2.90	0.50
1:A:132:ALA:O	1:A:133:MET:C	2.54	0.49
1:A:580:ALA:O	1:A:583:ARG:HB2	2.11	0.49
1:A:594:LEU:HB3	1:A:597:CYS:SG	2.53	0.49
1:A:97:THR:HG22	1:A:216:LEU:HD23	1.95	0.47
1:A:624:SER:CB	1:A:629:LEU:HD13	2.43	0.47
1:A:200:VAL:HG23	1:A:384:LEU:HD11	1.96	0.47
1:A:108:THR:HG21	1:A:359:GLN:HG3	1.97	0.46
1:A:394:LEU:O	1:A:395:MET:C	2.60	0.44
1:A:92:MET:CE	1:A:139:VAL:HA	2.47	0.44

Continued on next page...

Continued from previous page...

Atom-1	Atom-2	Interatomic distance (Å)	Clash overlap (Å)
1:A:636:TYR:CE2	1:A:648:LYS:HB3	2.53	0.44
1:A:83:THR:HG22	4:A:1006:CLR:H42	2.01	0.43
1:A:158:LEU:HD23	1:A:193:VAL:HG13	2.01	0.43
1:A:104:ILE:HD11	1:A:366:ARG:HD3	2.00	0.42
1:A:523:VAL:CG2	1:A:579:MET:SD	3.08	0.42
1:A:523:VAL:HG23	1:A:579:MET:SD	2.60	0.42
1:A:168:GLN:O	1:A:171:THR:HG23	2.19	0.42
1:A:100:ASP:OD1	1:A:366:ARG:NE	2.50	0.41
1:A:258:GLU:HG3	1:A:303:LEU:HD21	2.01	0.41
1:A:334:SER:O	1:A:335:ARG:C	2.64	0.41
1:A:581:MET:HG3	1:A:609:ILE:HD13	2.03	0.41

There are no symmetry-related clashes.

5.3 Torsion angles [i](#)

5.3.1 Protein backbone [i](#)

In the following table, the Percentiles column shows the percent Ramachandran outliers of the chain as a percentile score with respect to all PDB entries followed by that with respect to all EM entries.

The Analysed column shows the number of residues for which the backbone conformation was analysed, and the total number of residues.

Mol	Chain	Analysed	Favoured	Allowed	Outliers	Percentiles	
1	A	571/914 (62%)	539 (94%)	32 (6%)	0	100	100

There are no Ramachandran outliers to report.

5.3.2 Protein sidechains [i](#)

In the following table, the Percentiles column shows the percent sidechain outliers of the chain as a percentile score with respect to all PDB entries followed by that with respect to all EM entries.

The Analysed column shows the number of residues for which the sidechain conformation was analysed, and the total number of residues.

Mol	Chain	Analysed	Rotameric	Outliers	Percentiles
1	A	510/801 (64%)	490 (96%)	20 (4%)	28 53

All (20) residues with a non-rotameric sidechain are listed below:

Mol	Chain	Res	Type
1	A	61	LYS
1	A	100	ASP
1	A	142	PHE
1	A	200	VAL
1	A	275	ASN
1	A	283	ASN
1	A	285	ASN
1	A	288	GLU
1	A	351	SER
1	A	443	ASP
1	A	449	THR
1	A	453	ASP
1	A	458	ASP
1	A	460	ASN
1	A	461	PHE
1	A	472	CYS
1	A	498	THR
1	A	531	ASP
1	A	565	GLN
1	A	602	SER

Sometimes sidechains can be flipped to improve hydrogen bonding and reduce clashes. All (10) such sidechains are listed below:

Mol	Chain	Res	Type
1	A	106	ASN
1	A	141	ASN
1	A	180	ASN
1	A	283	ASN
1	A	293	HIS
1	A	302	HIS
1	A	350	HIS
1	A	396	GLN
1	A	438	ASN
1	A	550	GLN

5.3.3 RNA ⓘ

There are no RNA molecules in this entry.

5.4 Non-standard residues in protein, DNA, RNA chains ⓘ

There are no non-standard protein/DNA/RNA residues in this entry.

5.5 Carbohydrates ⓘ

There are no oligosaccharides in this entry.

5.6 Ligand geometry ⓘ

Of 6 ligands modelled in this entry, 2 are monoatomic - leaving 4 for Mogul analysis.

In the following table, the Counts columns list the number of bonds (or angles) for which Mogul statistics could be retrieved, the number of bonds (or angles) that are observed in the model and the number of bonds (or angles) that are defined in the Chemical Component Dictionary. The Link column lists molecule types, if any, to which the group is linked. The Z score for a bond length (or angle) is the number of standard deviations the observed value is removed from the expected value. A bond length (or angle) with $|Z| > 2$ is considered an outlier worth inspection. RMSZ is the root-mean-square of all Z scores of the bond lengths (or angles).

Mol	Type	Chain	Res	Link	Bond lengths			Bond angles		
					Counts	RMSZ	$\# Z > 2$	Counts	RMSZ	$\# Z > 2$
4	CLR	A	1005	-	31,31,31	0.85	0	48,48,48	1.16	3 (6%)
2	ATP	A	1001	3	29,33,33	0.62	0	44,52,52	0.84	2 (4%)
4	CLR	A	1006	-	31,31,31	0.66	0	48,48,48	1.21	8 (16%)
2	ATP	A	1003	3	29,33,33	0.51	0	44,52,52	0.61	0

In the following table, the Chirals column lists the number of chiral outliers, the number of chiral centers analysed, the number of these observed in the model and the number defined in the Chemical Component Dictionary. Similar counts are reported in the Torsion and Rings columns. '-' means no outliers of that kind were identified.

Mol	Type	Chain	Res	Link	Chirals	Torsions	Rings
4	CLR	A	1005	-	-	2/10/68/68	0/4/4/4
2	ATP	A	1001	3	-	1/22/38/38	0/3/3/3
4	CLR	A	1006	-	-	3/10/68/68	0/4/4/4
2	ATP	A	1003	3	-	1/22/38/38	0/3/3/3

There are no bond length outliers.

All (13) bond angle outliers are listed below:

Mol	Chain	Res	Type	Atoms	Z	Observed(°)	Ideal(°)
4	A	1005	CLR	C1-C2-C3	3.29	114.69	110.47
4	A	1006	CLR	C13-C17-C20	3.27	124.61	119.49
4	A	1006	CLR	C21-C20-C17	2.61	116.92	112.92
4	A	1005	CLR	C11-C9-C10	2.61	116.51	113.08
2	A	1001	ATP	C2'-C1'-N9	-2.23	107.67	113.30
4	A	1006	CLR	C11-C9-C10	2.21	115.99	113.08
4	A	1005	CLR	C2-C1-C10	2.11	117.31	112.74
4	A	1006	CLR	C12-C11-C9	2.10	116.75	113.11
4	A	1006	CLR	C2-C1-C10	2.09	117.27	112.74
4	A	1006	CLR	C4-C5-C6	-2.08	117.61	120.61
4	A	1006	CLR	C1-C2-C3	2.08	113.13	110.47
2	A	1001	ATP	PB-O3B-PG	-2.06	125.75	132.83
4	A	1006	CLR	C4-C5-C10	2.01	119.09	116.42

There are no chirality outliers.

All (7) torsion outliers are listed below:

Mol	Chain	Res	Type	Atoms
4	A	1006	CLR	C17-C20-C22-C23
4	A	1006	CLR	C21-C20-C22-C23
4	A	1005	CLR	C17-C20-C22-C23
4	A	1005	CLR	C21-C20-C22-C23
4	A	1006	CLR	C13-C17-C20-C21
2	A	1003	ATP	PA-O3A-PB-O2B
2	A	1001	ATP	PB-O3B-PG-O3G

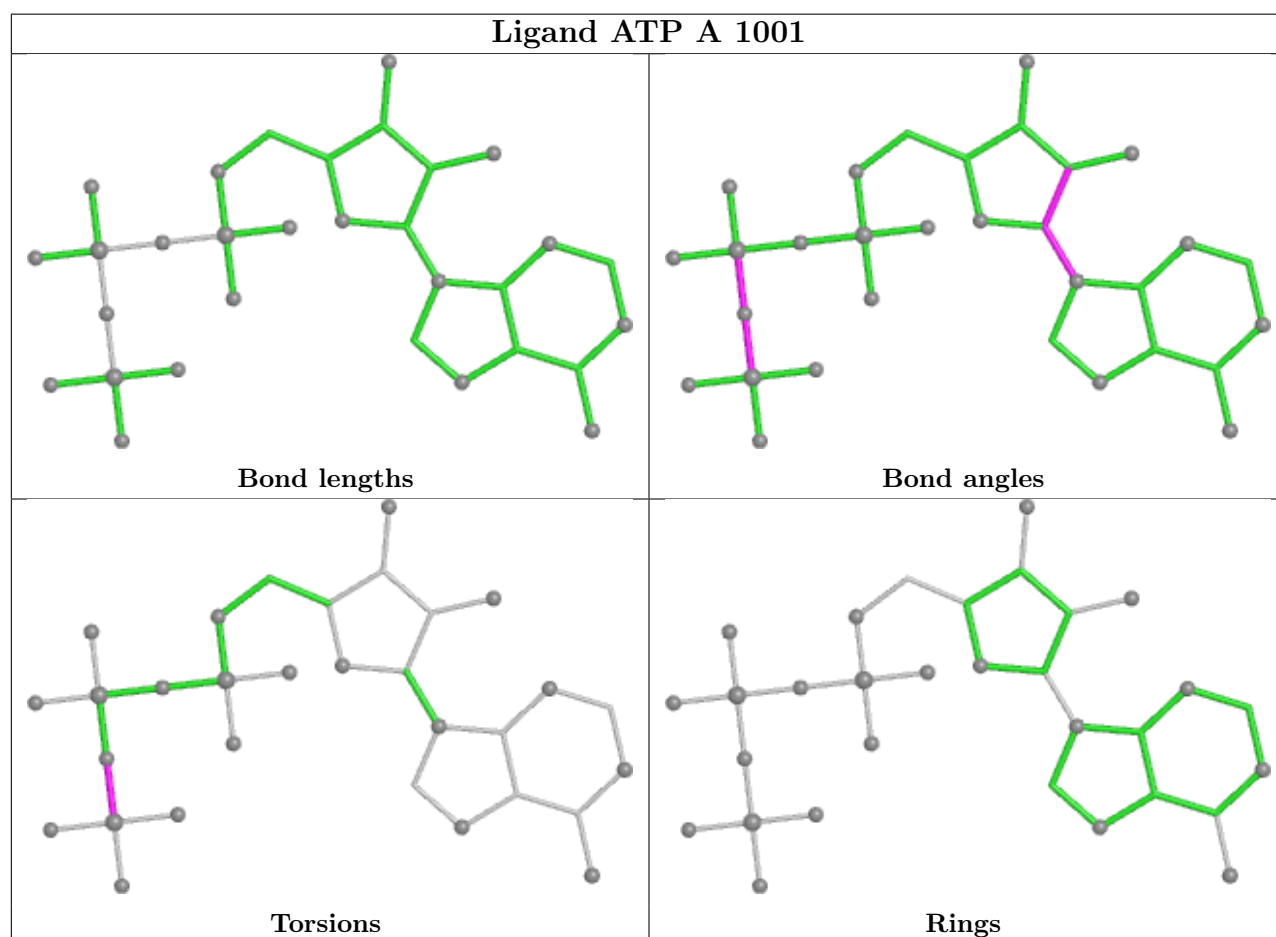
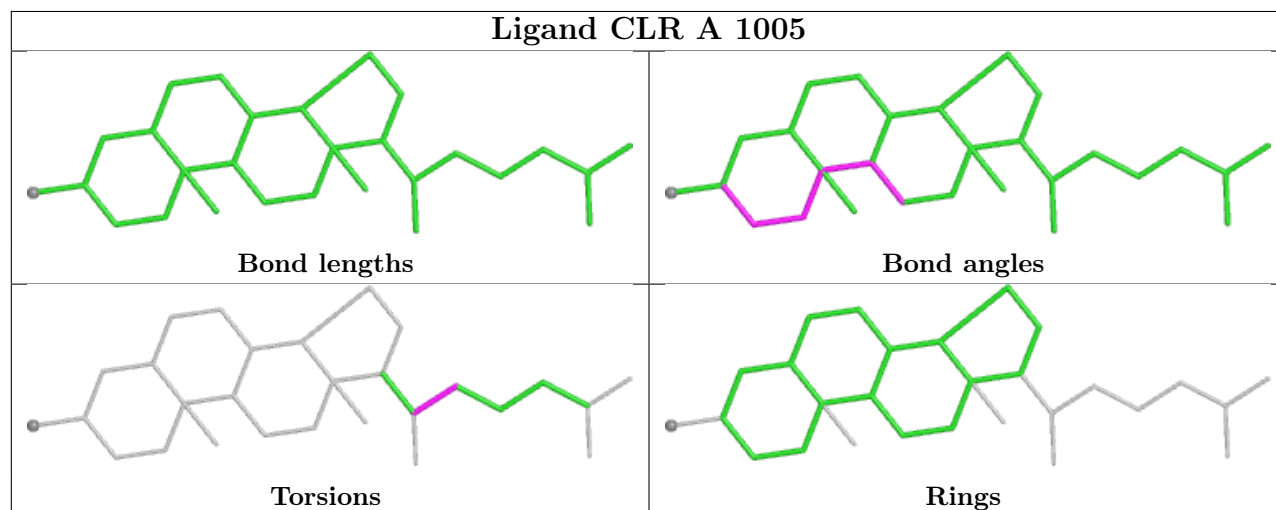
There are no ring outliers.

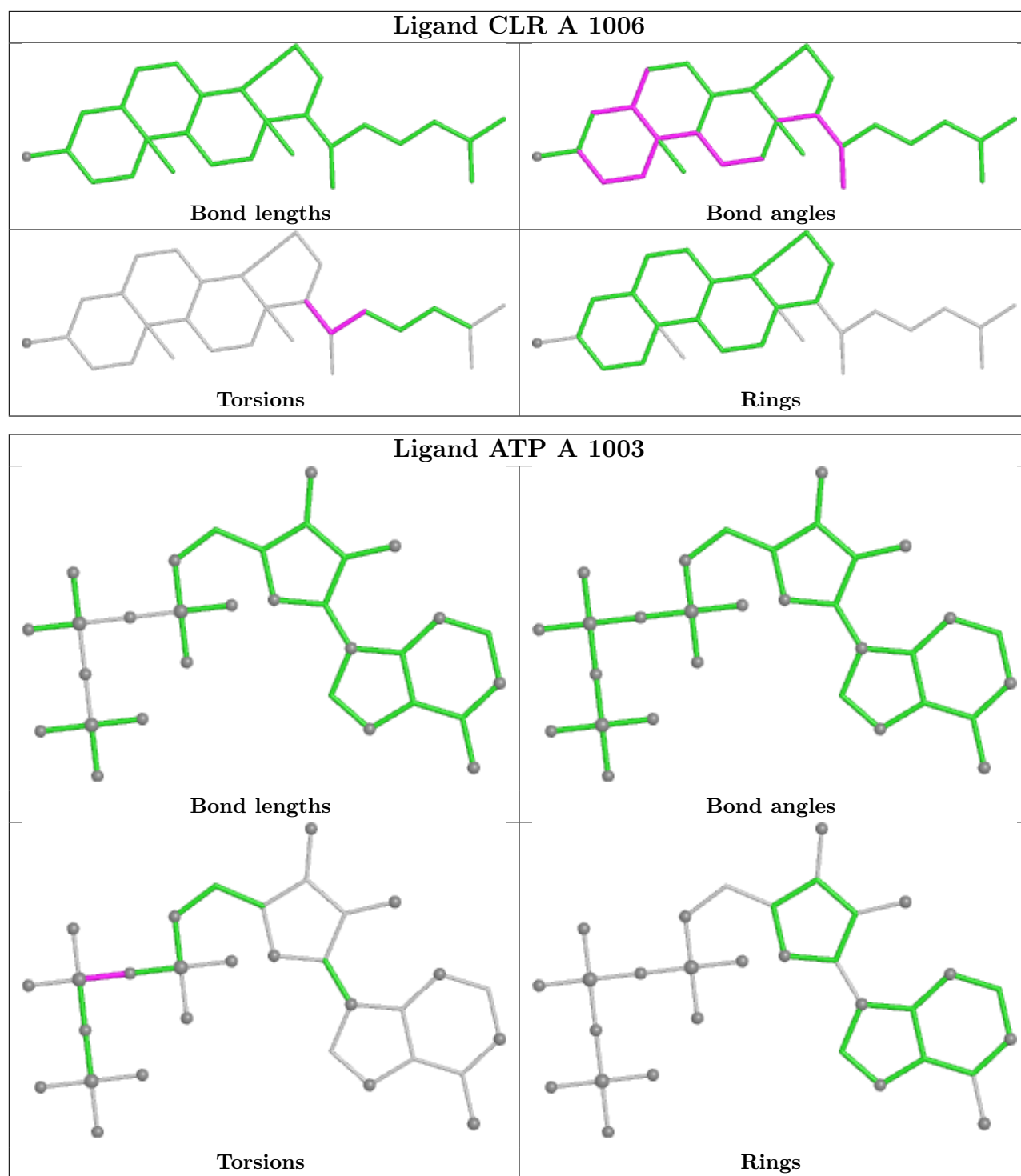
3 monomers are involved in 3 short contacts:

Mol	Chain	Res	Type	Clashes	Symm-Clashes
4	A	1005	CLR	1	0
2	A	1001	ATP	1	0
4	A	1006	CLR	1	0

The following is a two-dimensional graphical depiction of Mogul quality analysis of bond lengths, bond angles, torsion angles, and ring geometry for all instances of the Ligand of Interest. In addition, ligands with molecular weight > 250 and outliers as shown on the validation Tables will also be included. For torsion angles, if less than 5% of the Mogul distribution of torsion angles is within 10 degrees of the torsion angle in question, then that torsion angle is considered an outlier.

Any bond that is central to one or more torsion angles identified as an outlier by Mogul will be highlighted in the graph. For rings, the root-mean-square deviation (RMSD) between the ring in question and similar rings identified by Mogul is calculated over all ring torsion angles. If the average RMSD is greater than 60 degrees and the minimal RMSD between the ring in question and any Mogul-identified rings is also greater than 60 degrees, then that ring is considered an outlier. The outliers are highlighted in purple. The color gray indicates Mogul did not find sufficient equivalents in the CSD to analyse the geometry.





5.7 Other polymers [i](#)

There are no such residues in this entry.

5.8 Polymer linkage issues ⓘ

There are no chain breaks in this entry.

6 Map visualisation [i](#)

This section contains visualisations of the EMDB entry EMD-65677. These allow visual inspection of the internal detail of the map and identification of artifacts.

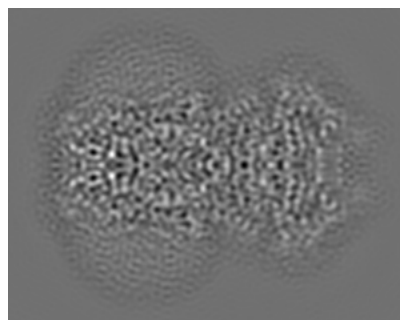
Images derived from a raw map, generated by summing the deposited half-maps, are presented below the corresponding image components of the primary map to allow further visual inspection and comparison with those of the primary map.

6.1 Orthogonal projections [i](#)

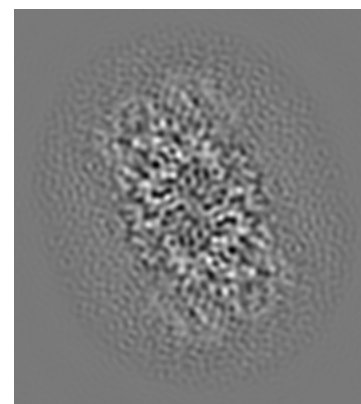
6.1.1 Primary map



X

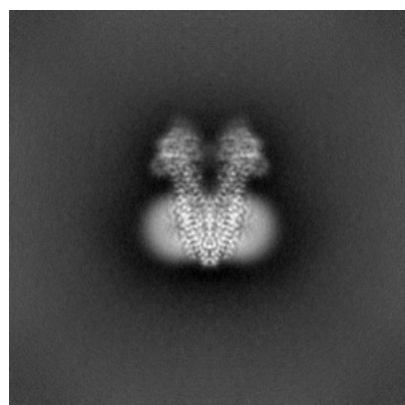


Y

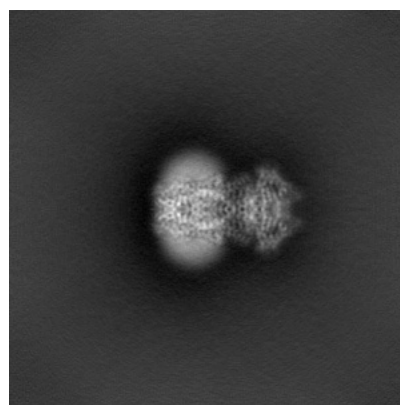


Z

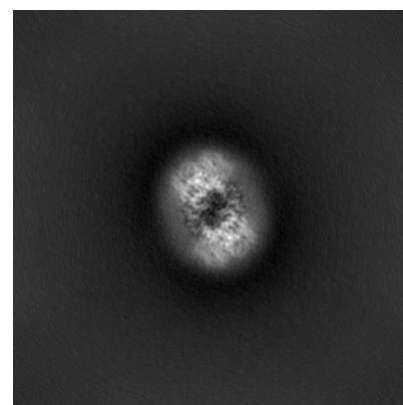
6.1.2 Raw map



X



Y

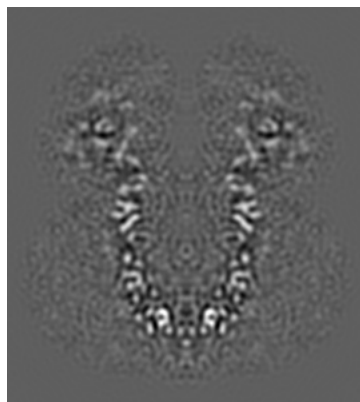


Z

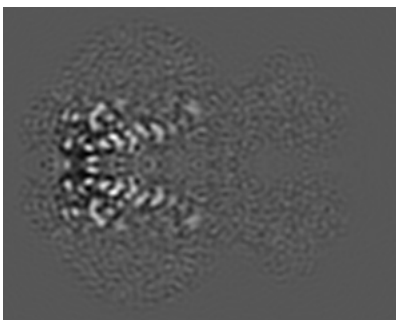
The images above show the map projected in three orthogonal directions.

6.2 Central slices [i](#)

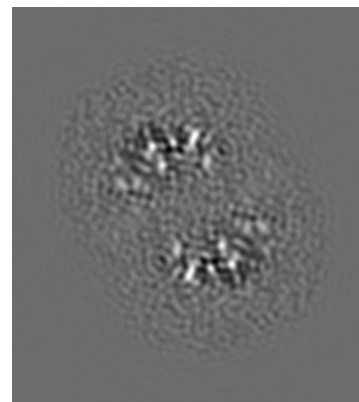
6.2.1 Primary map



X Index: 57

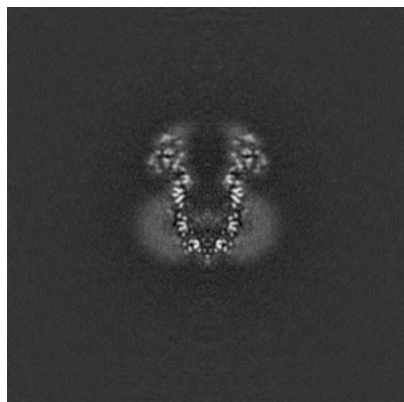


Y Index: 64

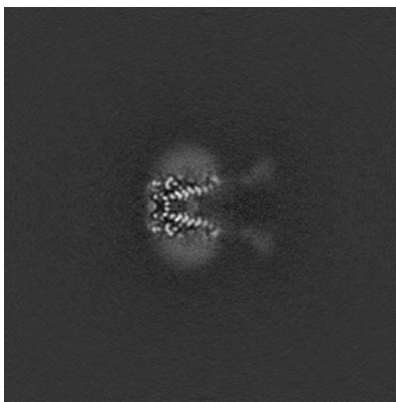


Z Index: 72

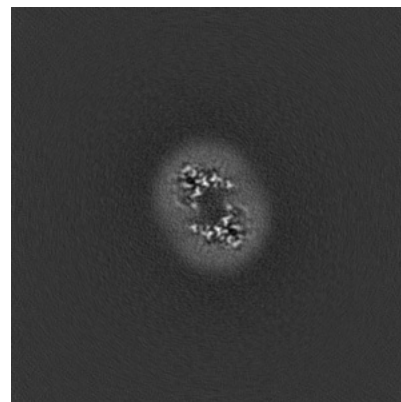
6.2.2 Raw map



X Index: 150



Y Index: 150

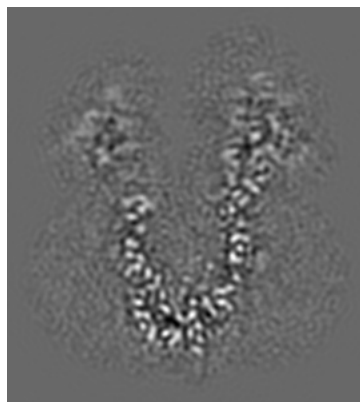


Z Index: 150

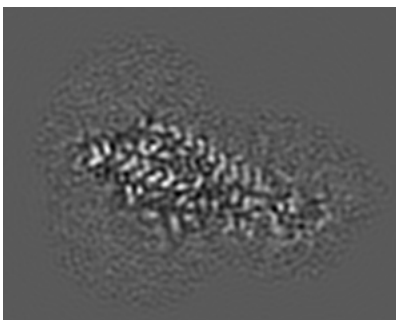
The images above show central slices of the map in three orthogonal directions.

6.3 Largest variance slices [i](#)

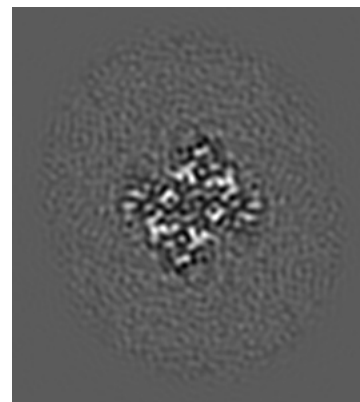
6.3.1 Primary map



X Index: 52



Y Index: 81

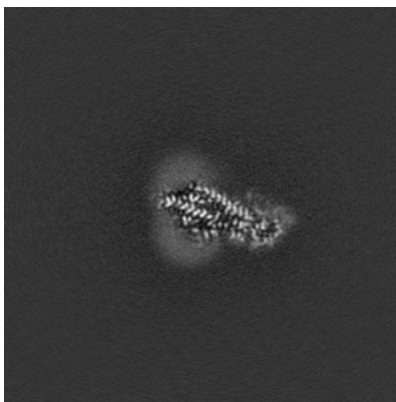


Z Index: 34

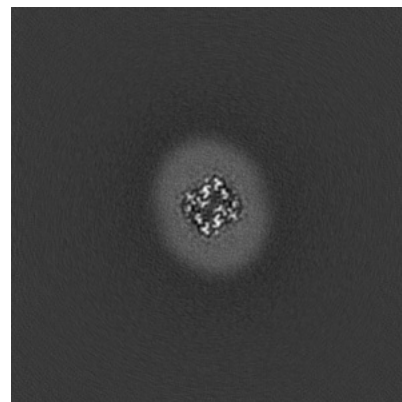
6.3.2 Raw map



X Index: 144



Y Index: 167

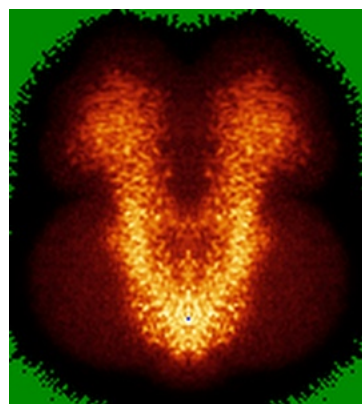


Z Index: 127

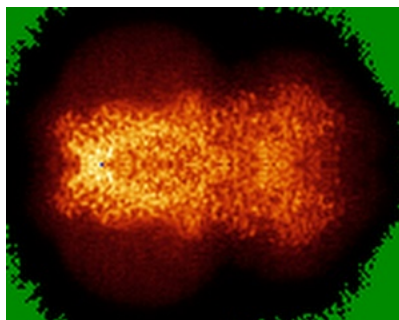
The images above show the largest variance slices of the map in three orthogonal directions.

6.4 Orthogonal standard-deviation projections (False-color) ⓘ

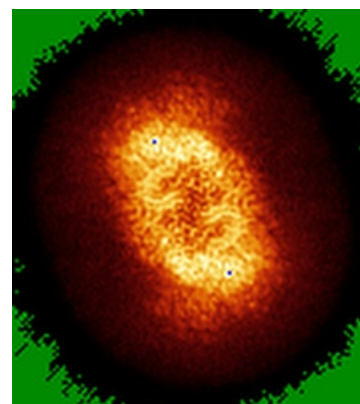
6.4.1 Primary map



X



Y

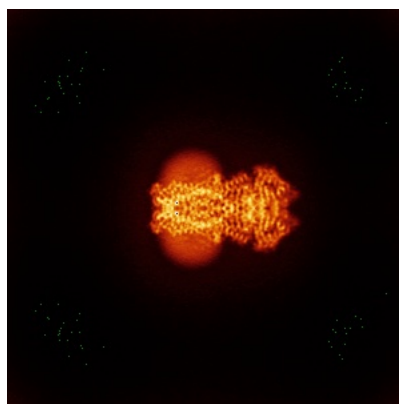


Z

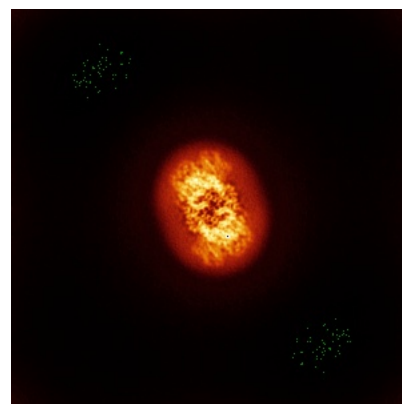
6.4.2 Raw map



X



Y

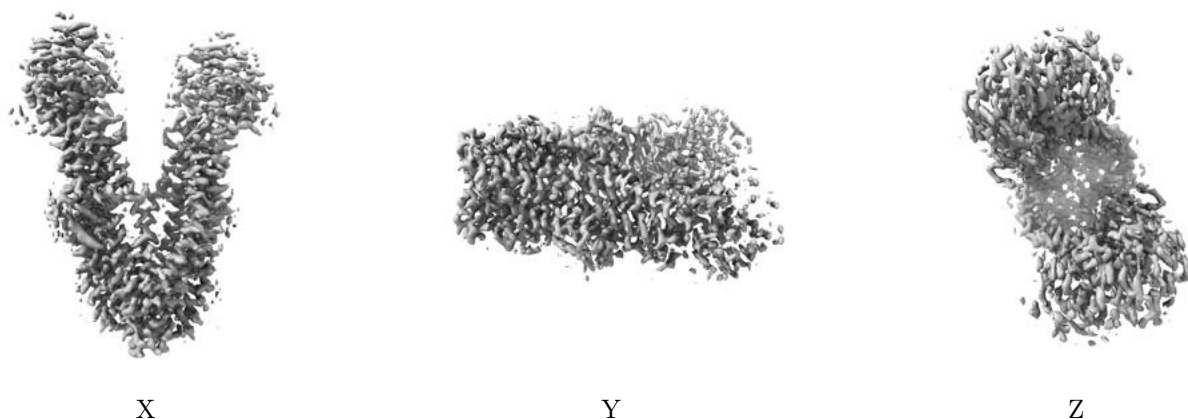


Z

The images above show the map standard deviation projections with false color in three orthogonal directions. Minimum values are shown in green, max in blue, and dark to light orange shades represent small to large values respectively.

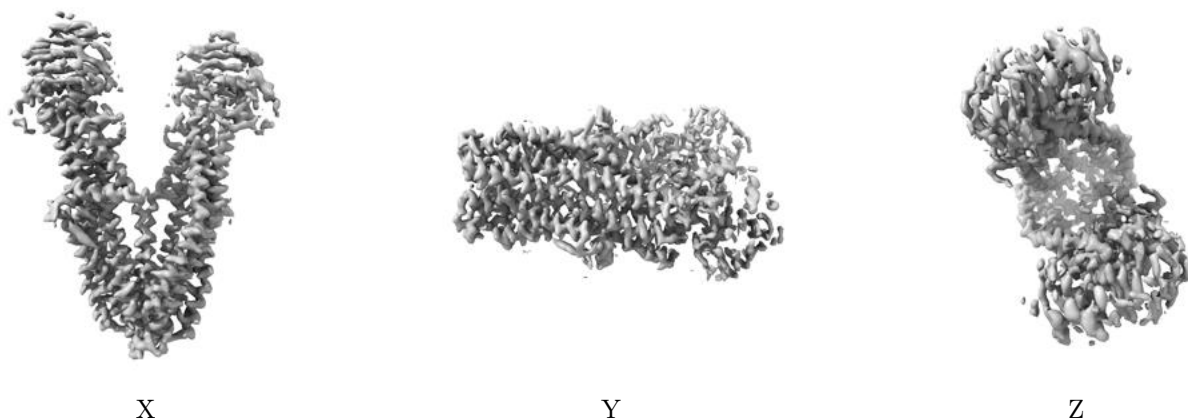
6.5 Orthogonal surface views [i](#)

6.5.1 Primary map



The images above show the 3D surface view of the map at the recommended contour level 2.2. These images, in conjunction with the slice images, may facilitate assessment of whether an appropriate contour level has been provided.

6.5.2 Raw map



These images show the 3D surface of the raw map. The raw map's contour level was selected so that its surface encloses the same volume as the primary map does at its recommended contour level.

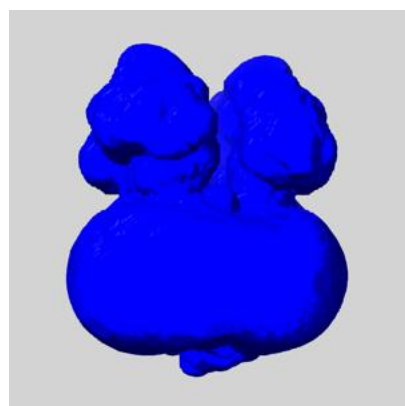
6.6 Mask visualisation [i](#)

This section shows the 3D surface view of the primary map at 50% transparency overlaid with the specified mask at 0% transparency

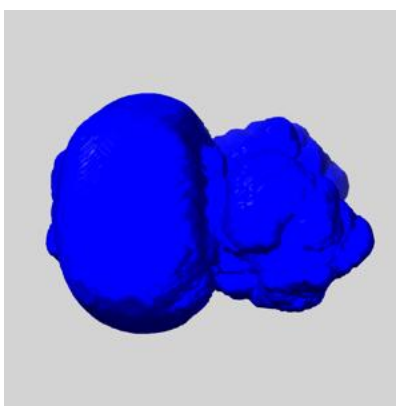
A mask typically either:

- Encompasses the whole structure
- Separates out a domain, a functional unit, a monomer or an area of interest from a larger structure

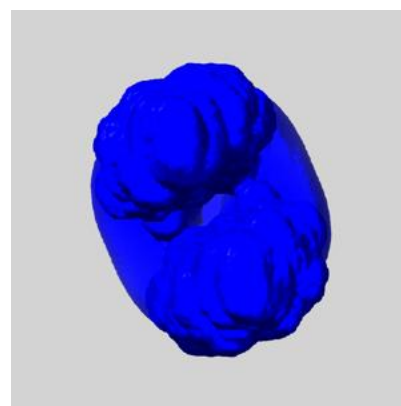
6.6.1 emd_65677_msk_1.map [i](#)



X



Y

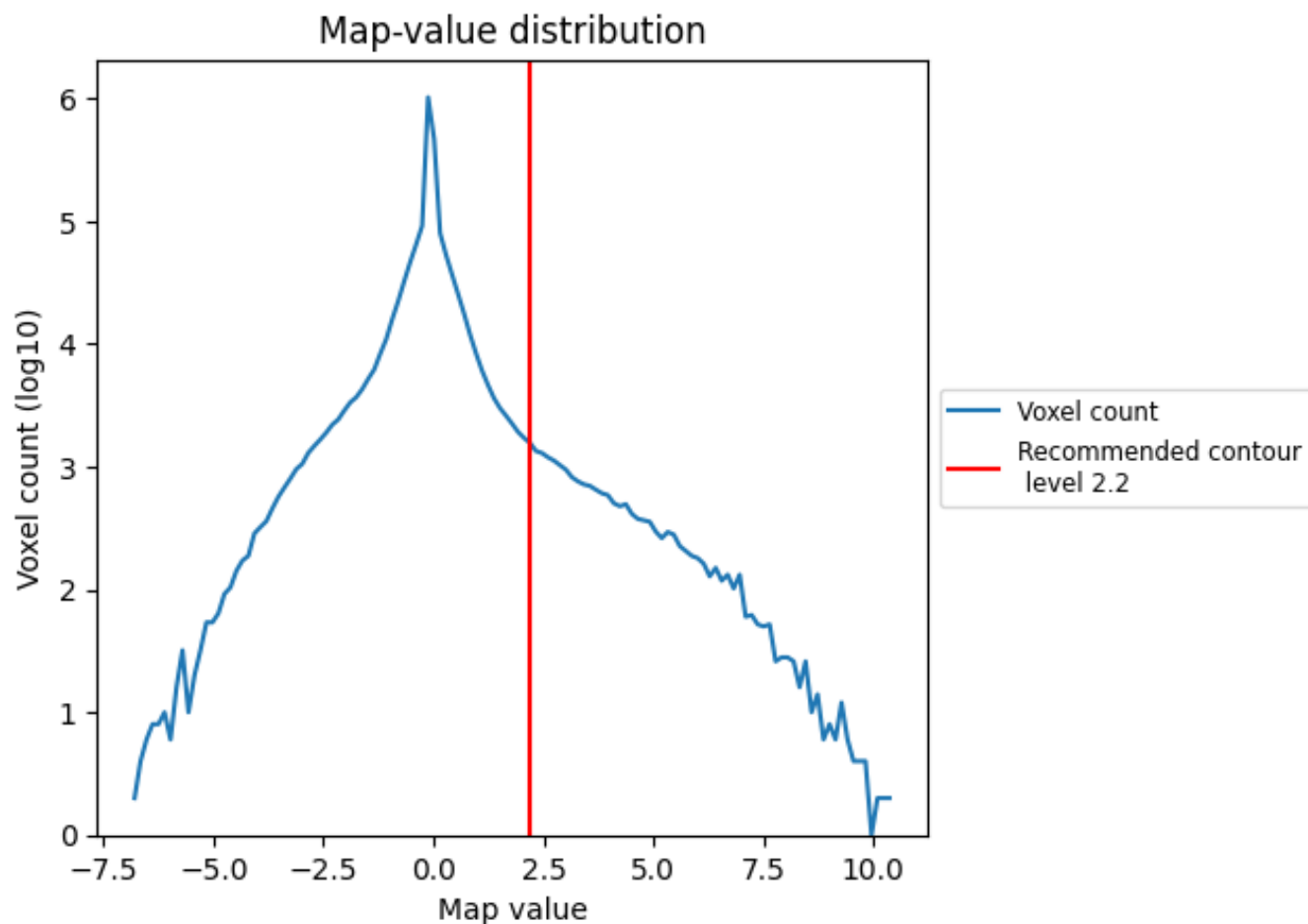


Z

7 Map analysis [i](#)

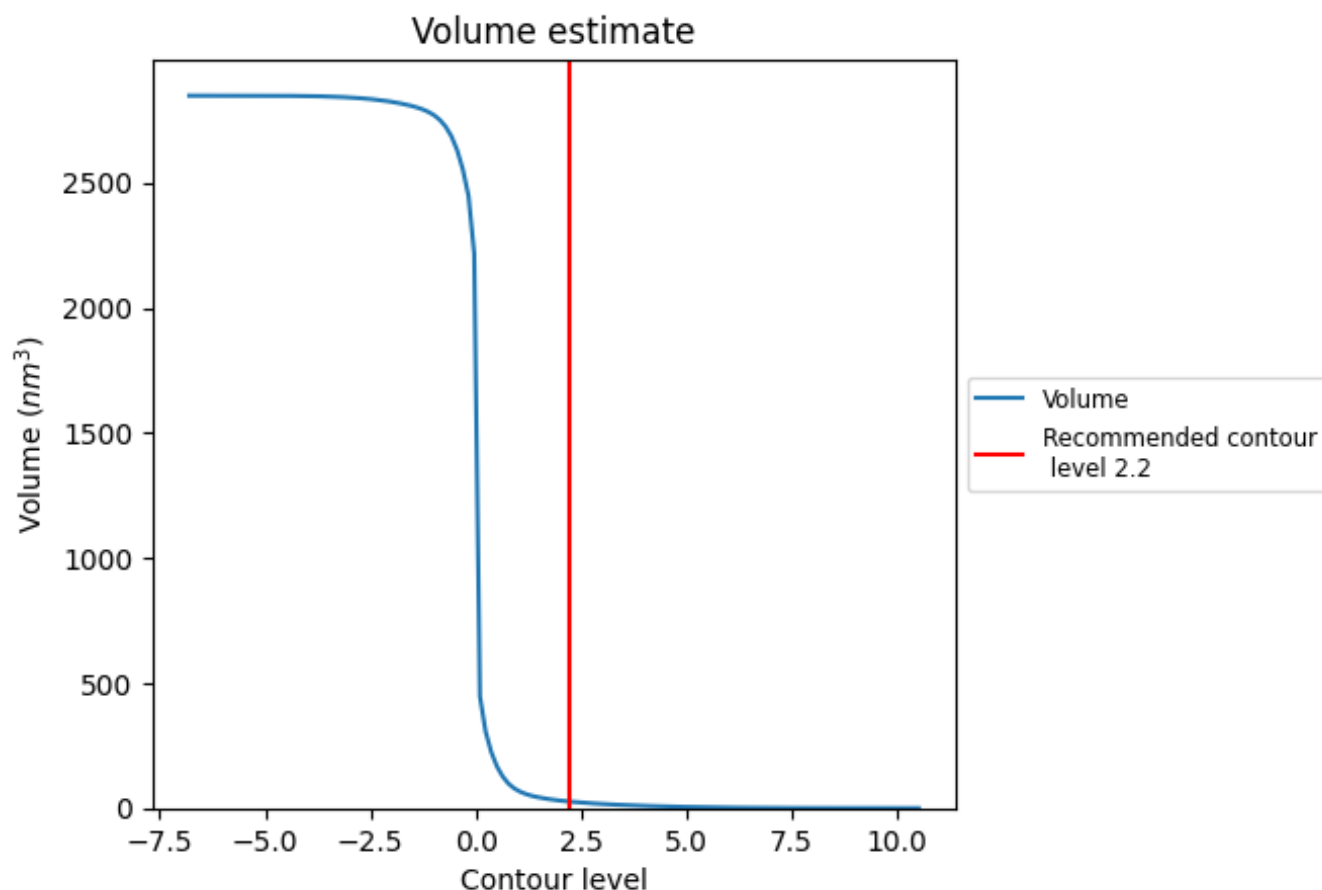
This section contains the results of statistical analysis of the map.

7.1 Map-value distribution [i](#)



The map-value distribution is plotted in 128 intervals along the x-axis. The y-axis is logarithmic. A spike in this graph at zero usually indicates that the volume has been masked.

7.2 Volume estimate [i](#)



The volume at the recommended contour level is 27 nm³; this corresponds to an approximate mass of 24 kDa.

The volume estimate graph shows how the enclosed volume varies with the contour level. The recommended contour level is shown as a vertical line and the intersection between the line and the curve gives the volume of the enclosed surface at the given level.

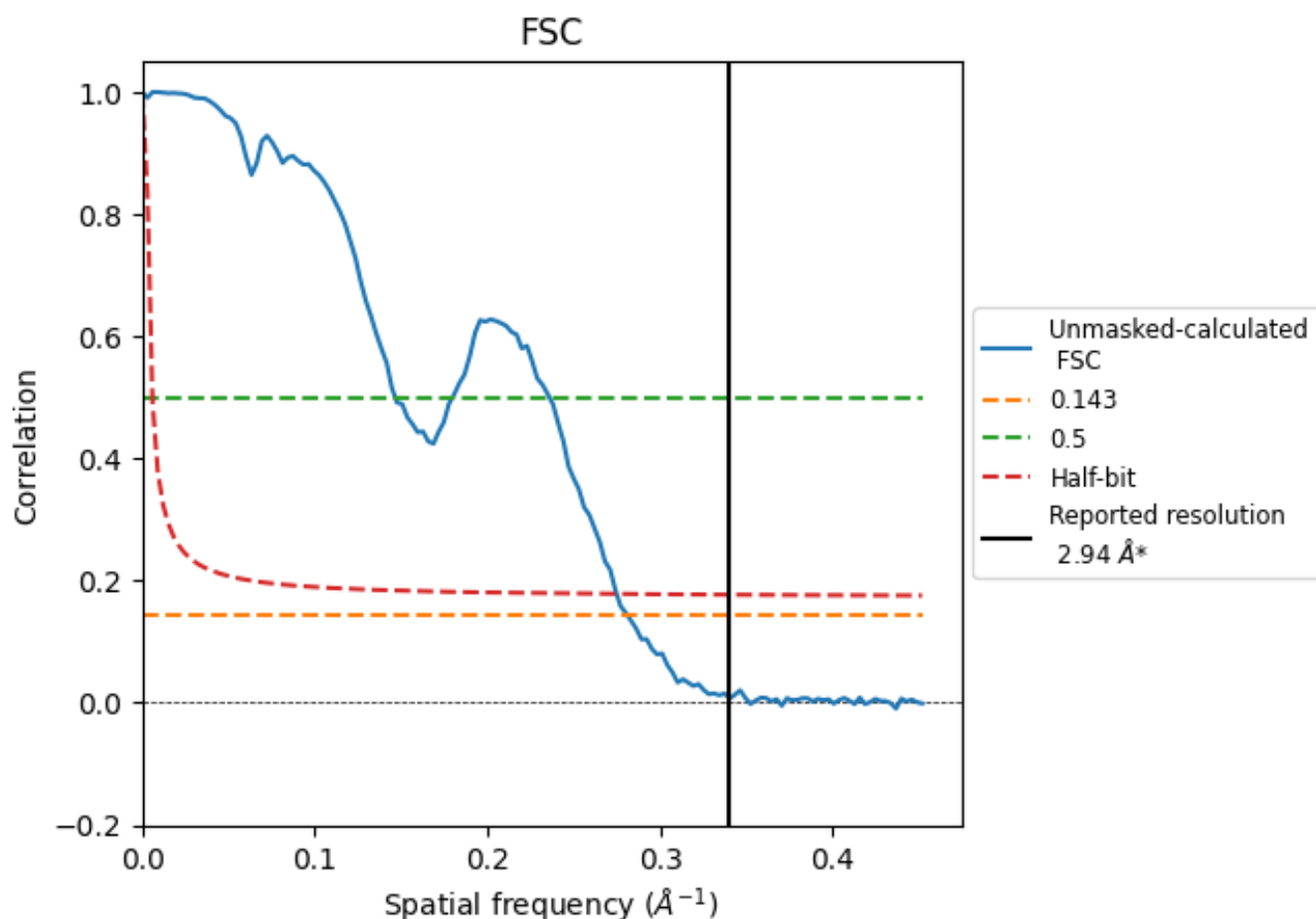
7.3 Rotationally averaged power spectrum [i](#)

This section was not generated. The rotationally averaged power spectrum is only generated for cubic maps.

8 Fourier-Shell correlation [i](#)

Fourier-Shell Correlation (FSC) is the most commonly used method to estimate the resolution of single-particle and subtomogram-averaged maps. The shape of the curve depends on the imposed symmetry, mask and whether or not the two 3D reconstructions used were processed from a common reference. The reported resolution is shown as a black line. A curve is displayed for the half-bit criterion in addition to lines showing the 0.143 gold standard cut-off and 0.5 cut-off.

8.1 FSC [i](#)



*Reported resolution corresponds to spatial frequency of 0.340 \AA^{-1}

8.2 Resolution estimates [i](#)

Resolution estimate (Å)	Estimation criterion (FSC cut-off)		
	0.143	0.5	Half-bit
Reported by author	2.94	-	-
Author-provided FSC curve	-	-	-
Unmasked-calculated*	3.56	6.83	3.64

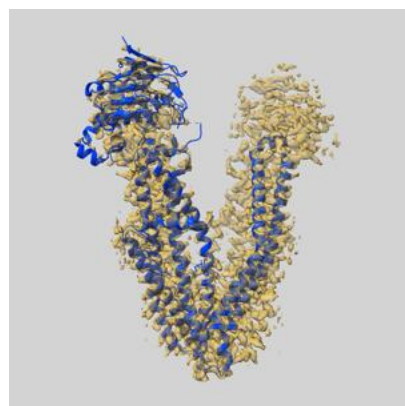
*Resolution estimate based on FSC curve calculated by comparison of deposited half-maps. The value from deposited half-maps intersecting FSC 0.143 CUT-OFF 3.56 differs from the reported value 2.94 by more than 10 %

9 Map-model fit [i](#)

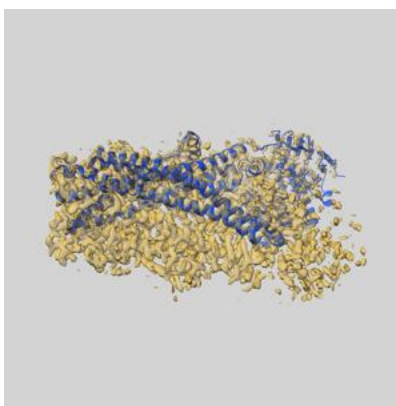
This section contains information regarding the fit between EMDB map EMD-65677 and PDB model 9W65. Per-residue inclusion information can be found in section 3 on page 6.

9.1 Map-model overlays

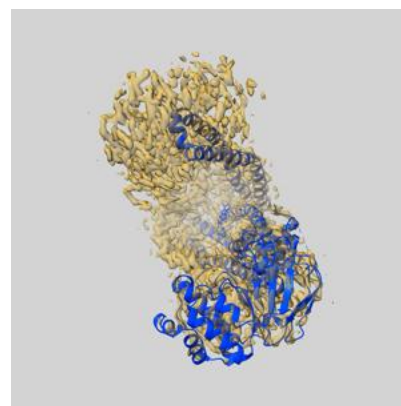
9.1.1 Map-model overlay [i](#)



X

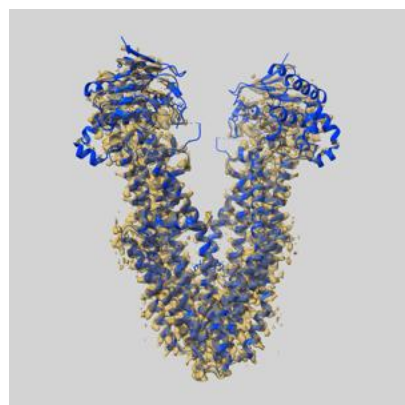


Y

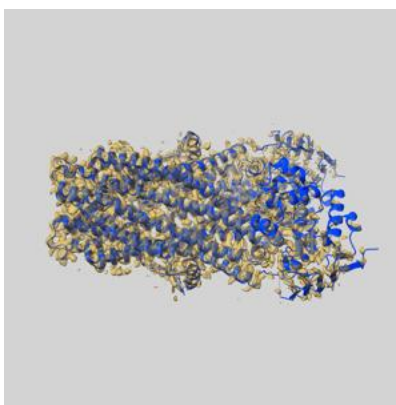


Z

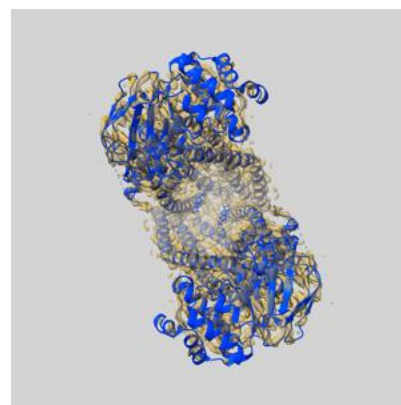
9.1.2 Map-model assembly overlay [i](#)



X



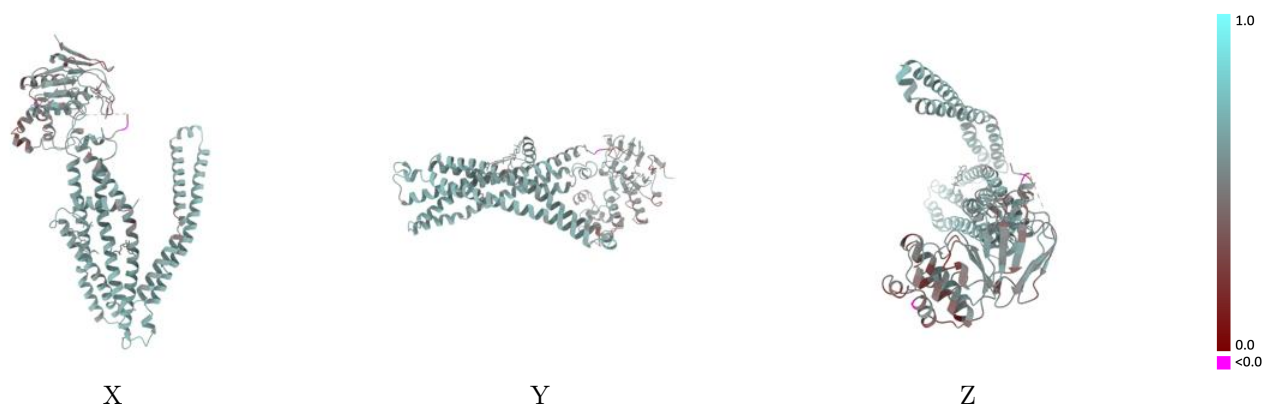
Y



Z

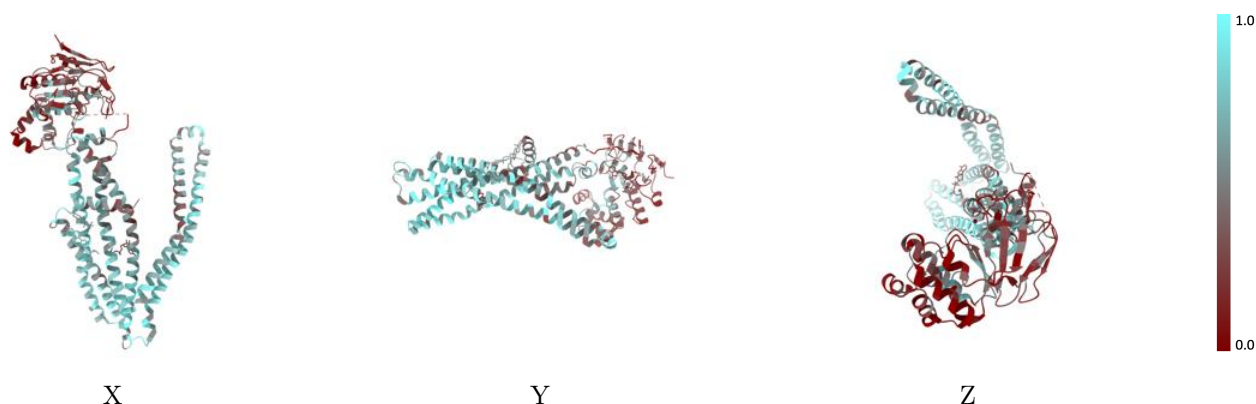
The images above show the 3D surface view of the map at the recommended contour level 2.2 at 50% transparency in yellow overlaid with a ribbon representation of the model coloured in blue. These images allow for the visual assessment of the quality of fit between the atomic model and the map.

9.2 Q-score mapped to coordinate model [i](#)



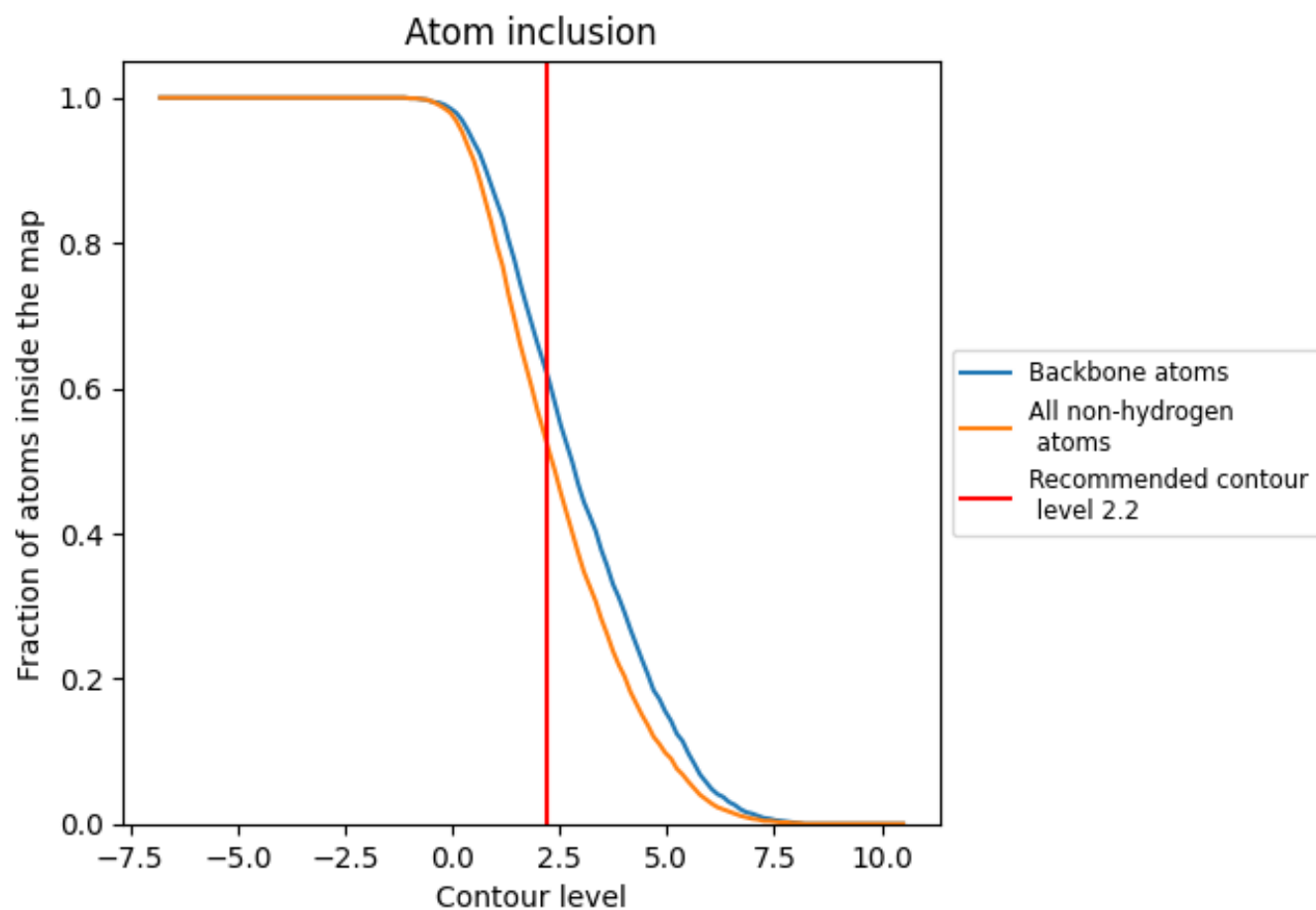
The images above show the model with each residue coloured according to its Q-score. This shows their resolvability in the map with higher Q-score values reflecting better resolvability. Please note: Q-score is calculating the resolvability of atoms, and thus high values are only expected at resolutions at which atoms can be resolved. Low Q-score values may therefore be expected for many entries.

9.3 Atom inclusion mapped to coordinate model [i](#)



The images above show the model with each residue coloured according to its atom inclusion. This shows to what extent they are inside the map at the recommended contour level (2.2).

9.4 Atom inclusion [i](#)



At the recommended contour level, 62% of all backbone atoms, 52% of all non-hydrogen atoms, are inside the map.

9.5 Map-model fit summary ⓘ

The table lists the average atom inclusion at the recommended contour level (2.2) and Q-score for the entire model and for each chain.

Chain	Atom inclusion	Q-score
All	<div></div> 0.5250	<div></div> 0.5480
A	<div></div> 0.5250	<div></div> 0.5480

