



## Full wwPDB EM Validation Report ⓘ

Jun 1, 2026 – 03:01 PM JST

PDB ID : 9V9R / pdb\_00009v9r  
EMDB ID : EMD-64885  
Title : Cryo-EM structure of the ncPRC1.1-UbcH5c E3-E2 complex bound to the H2BK120ub-modified nucleosome  
Authors : Yu, Y.; Cai, D.; Zhang, Y.Z.; Huang, J.  
Deposited on : 2025-06-02  
Resolution : 3.20 Å(reported)

This is a Full wwPDB EM Validation Report for a publicly released PDB entry.

We welcome your comments at [validation@mail.wwpdb.org](mailto:validation@mail.wwpdb.org)

A user guide is available at

<https://www.wwpdb.org/validation/2017/EMValidationReportHelp>  
with specific help available everywhere you see the ⓘ symbol.

The types of validation reports are described at

<http://www.wwpdb.org/validation/2017/FAQs#types>.

---

The following versions of software and data (see [references ⓘ](#)) were used in the production of this report:

EMDB validation analysis : 0.0.1.dev132  
MolProbity : 4-5-2 with Phenix2.0  
Percentile statistics : 20250101.v01 (using entries in the PDB archive January 1st 2025)  
EM percentile statistics : 202505.v01 (Using data in the EMDB archive up until May 2025)  
MapQ : 1.9.13  
Ideal geometry (proteins) : Engh & Huber (2001)  
Ideal geometry (DNA, RNA) : Parkinson et al. (1996)  
Validation Pipeline (wwPDB-VP) : 2.49



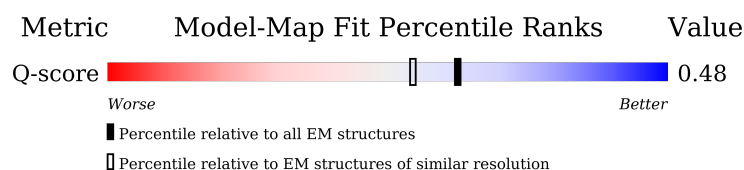
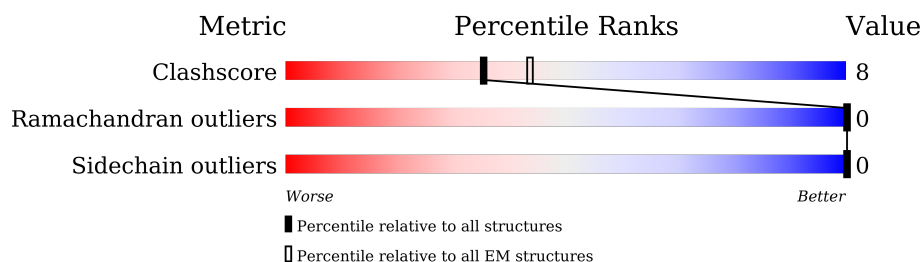
# 1 Overall quality at a glance

The following experimental techniques were used to determine the structure:

*ELECTRON MICROSCOPY*

The reported resolution of this entry is 3.20 Å.

Percentile scores (ranging between 0-100) for global validation metrics of the entry are shown in the following graphic. The table shows the number of entries on which the scores are based.



Metric	Whole archive (#Entries)	EM structures (#Entries)	Similar EM resolution (#Entries, resolution range(Å))
Clashscore	229148	23984	-
Ramachandran outliers	224038	23583	-
Sidechain outliers	223484	23102	-
Q-score	-	25397	15020 ( 2.70 - 3.70 )




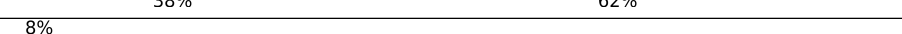



The table below summarises the geometric issues observed across the polymeric chains and their fit to the map. The red, orange, yellow and green segments of the bar indicate the fraction of residues that contain outliers for  $\geq 3$ , 2, 1 and 0 types of geometric quality criteria respectively. A grey segment represents the fraction of residues that are not modelled. The numeric value for each fraction is indicated below the corresponding segment, with a dot representing fractions  $\leq 5\%$ . The upper red bar (where present) indicates the fraction of residues that have poor fit to the EM map (all-atom inclusion  $< 40\%$ ). The numeric value is given above the bar.

Mol	Chain	Length	Quality of chain
1	A	136	
1	E	136	
2	B	103	
2	F	103	

*Continued on next page...*



*Continued from previous page...*

Mol	Chain	Length	Quality of chain
3	C	130	
3	G	130	
4	D	126	
4	H	126	
5	I	144	
6	J	145	
7	N	336	
8	P	147	
9	O	76	
10	R	76	
11	M	259	



## 2 Entry composition

There are 12 unique types of molecules in this entry. The entry contains 15809 atoms, of which 0 are hydrogens and 0 are deuteriums.

In the tables below, the AltConf column contains the number of residues with at least one atom in alternate conformation and the Trace column contains the number of residues modelled with at most 2 atoms.

- Molecule 1 is a protein called Histone H3.

Mol	Chain	Residues	Atoms					AltConf	Trace
1	A	96	Total	C	N	O	S	0	0
			791	500	151	137	3		
1	E	96	Total	C	N	O	S	0	0
			791	500	151	137	3		

- Molecule 2 is a protein called Histone H4.

Mol	Chain	Residues	Atoms					AltConf	Trace
2	B	83	Total	C	N	O	S	0	0
			662	418	129	114	1		
2	F	80	Total	C	N	O	S	0	0
			644	408	125	110	1		

- Molecule 3 is a protein called Histone H2A.

Mol	Chain	Residues	Atoms				AltConf	Trace
3	C	103	Total	C	N	O	0	0
			795	501	155	139		
3	G	105	Total	C	N	O	0	0
			813	513	159	141		

- Molecule 4 is a protein called Histone H2B.

Mol	Chain	Residues	Atoms					AltConf	Trace
4	D	91	Total	C	N	O	S	0	0
			711	447	127	134	3		
4	H	92	Total	C	N	O	S	0	0
			716	450	128	135	3		

There are 2 discrepancies between the modelled and reference sequences:

Chain	Residue	Modelled	Actual	Comment	Reference
D	117	CYS	LYS	engineered mutation	UNP A0A8J0TWI5

*Continued on next page...*



*Continued from previous page...*

Chain	Residue	Modelled	Actual	Comment	Reference
H	117	CYS	LYS	engineered mutation	UNP A0A8J0TWI5

- Molecule 5 is a DNA chain called DNA (144-MER).

Mol	Chain	Residues	Atoms					AltConf	Trace
5	I	144	Total	C	N	O	P	0	0
			2935	1393	536	862	144		

- Molecule 6 is a DNA chain called DNA (145-MER).

Mol	Chain	Residues	Atoms					AltConf	Trace
6	J	145	Total	C	N	O	P	0	0
			2990	1415	559	871	145		

- Molecule 7 is a protein called E3 ubiquitin-protein ligase RING2.

Mol	Chain	Residues	Atoms					AltConf	Trace
7	N	100	Total	C	N	O	S	0	0
			793	498	138	147	10		

- Molecule 8 is a protein called Ubiquitin-conjugating enzyme E2 D3.

Mol	Chain	Residues	Atoms					AltConf	Trace
8	P	146	Total	C	N	O	S	0	0
			1171	749	202	214	6		

There are 2 discrepancies between the modelled and reference sequences:

Chain	Residue	Modelled	Actual	Comment	Reference
P	22	ARG	SER	engineered mutation	UNP P61077
P	85	SER	CYS	engineered mutation	UNP P61077

- Molecule 9 is a protein called Ubiquitin.

Mol	Chain	Residues	Atoms					AltConf	Trace
9	O	76	Total	C	N	O	S	0	0
			603	379	105	117	2		

There is a discrepancy between the modelled and reference sequences:



Chain	Residue	Modelled	Actual	Comment	Reference
O	76	CYS	GLY	engineered mutation	UNP P0CG47

- Molecule 10 is a protein called Ubiquitin.

Mol	Chain	Residues	Atoms					AltConf	Trace
10	R	76	Total	C	N	O	S	0	0
			601	378	105	117	1		

- Molecule 11 is a protein called Polycomb group RING finger protein 1.

Mol	Chain	Residues	Atoms					AltConf	Trace
11	M	97	Total	C	N	O	S	0	0
			789	503	132	144	10		

- Molecule 12 is ZINC ION (CCD ID: ZN) (formula: Zn) (labeled as "Ligand of Interest" by depositor).

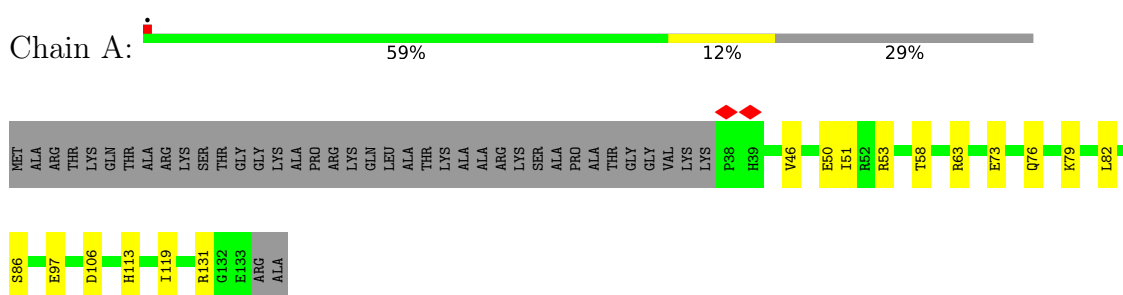
Mol	Chain	Residues	Atoms		AltConf
12	N	2	Total	Zn	0
			2	2	
12	M	2	Total	Zn	0
			2	2	



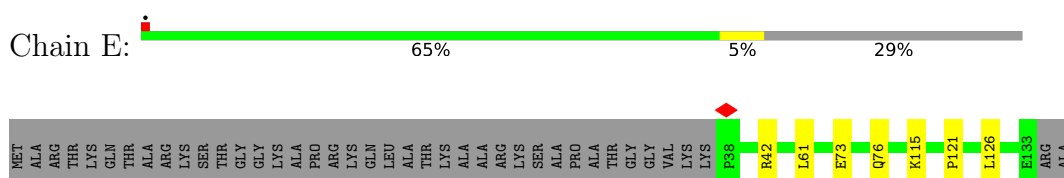
### 3 Residue-property plots [i](#)

These plots are drawn for all protein, RNA, DNA and oligosaccharide chains in the entry. The first graphic for a chain summarises the proportions of the various outlier classes displayed in the second graphic. The second graphic shows the sequence view annotated by issues in geometry and atom inclusion in map density. Residues are color-coded according to the number of geometric quality criteria for which they contain at least one outlier: green = 0, yellow = 1, orange = 2 and red = 3 or more. A red diamond above a residue indicates a poor fit to the EM map for this residue (all-atom inclusion < 40%). Stretches of 2 or more consecutive residues without any outlier are shown as a green connector. Residues present in the sample, but not in the model, are shown in grey.

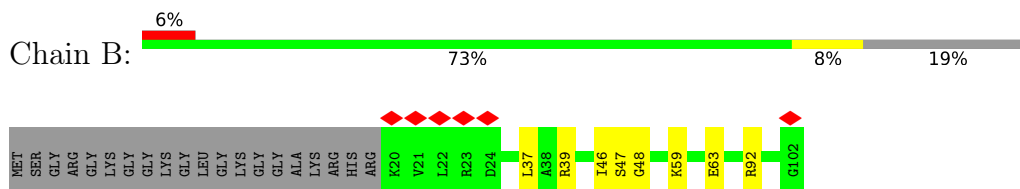
#### • Molecule 1: Histone H3



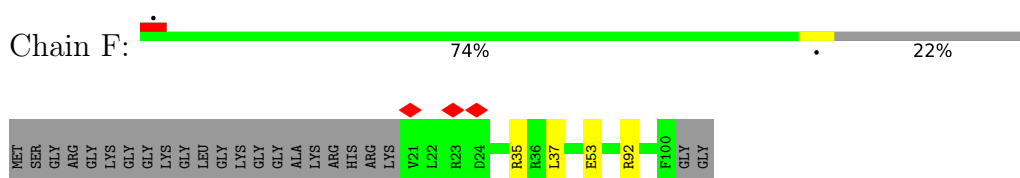
#### • Molecule 1: Histone H3



#### • Molecule 2: Histone H4



#### • Molecule 2: Histone H4



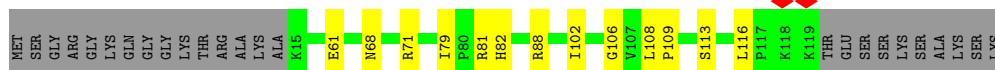
#### • Molecule 3: Histone H2A



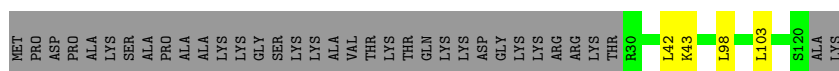




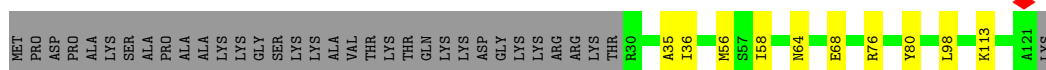
- Molecule 3: Histone H2A



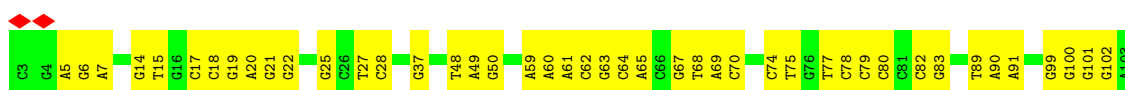
- Molecule 4: Histone H2B



- Molecule 4: Histone H2B



- Molecule 5: DNA (144-MER)



- Molecule 6: DNA (145-MER)

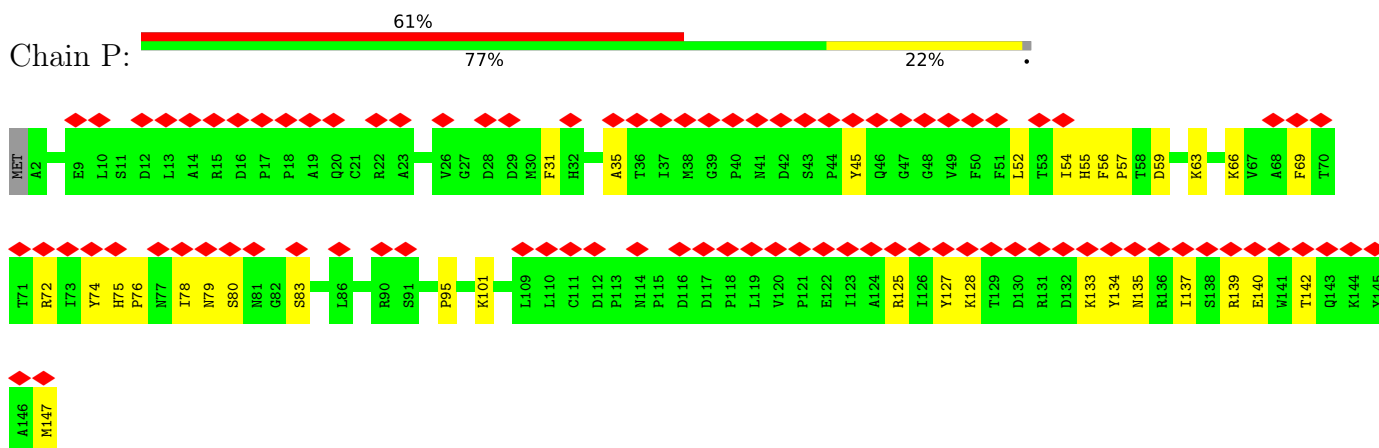


- Molecule 7: E3 ubiquitin-protein ligase RING2

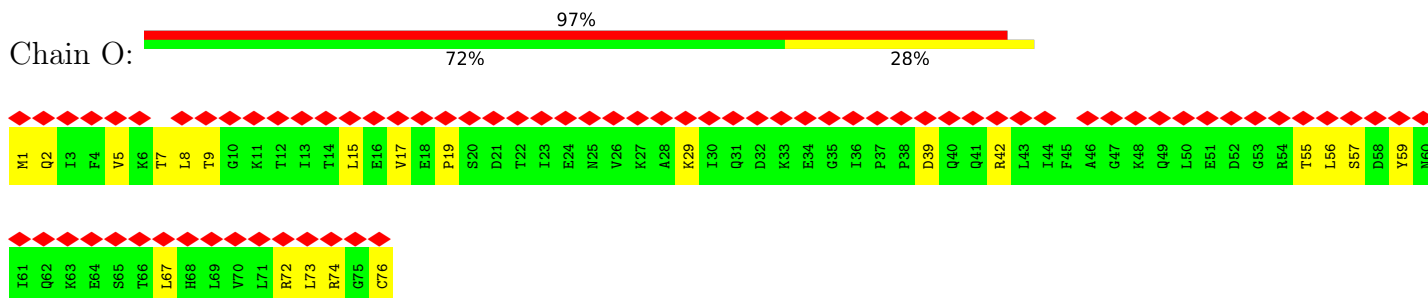




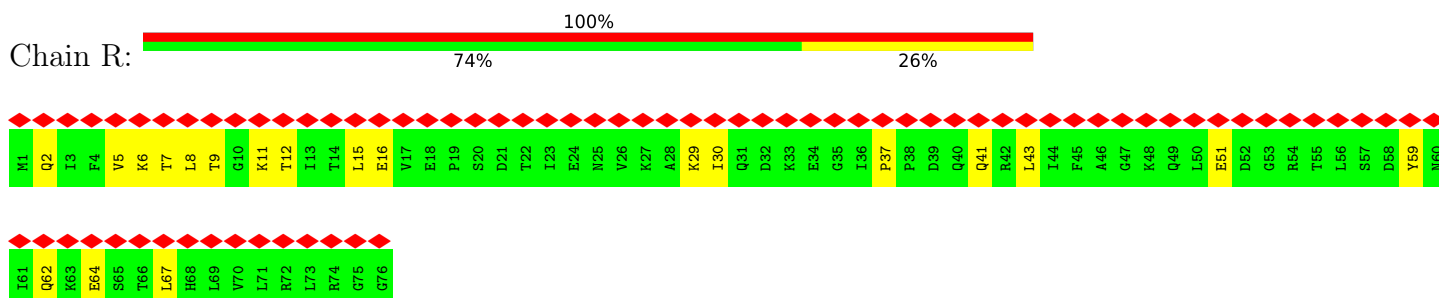
- Molecule 8: Ubiquitin-conjugating enzyme E2 D3



- Molecule 9: Ubiquitin

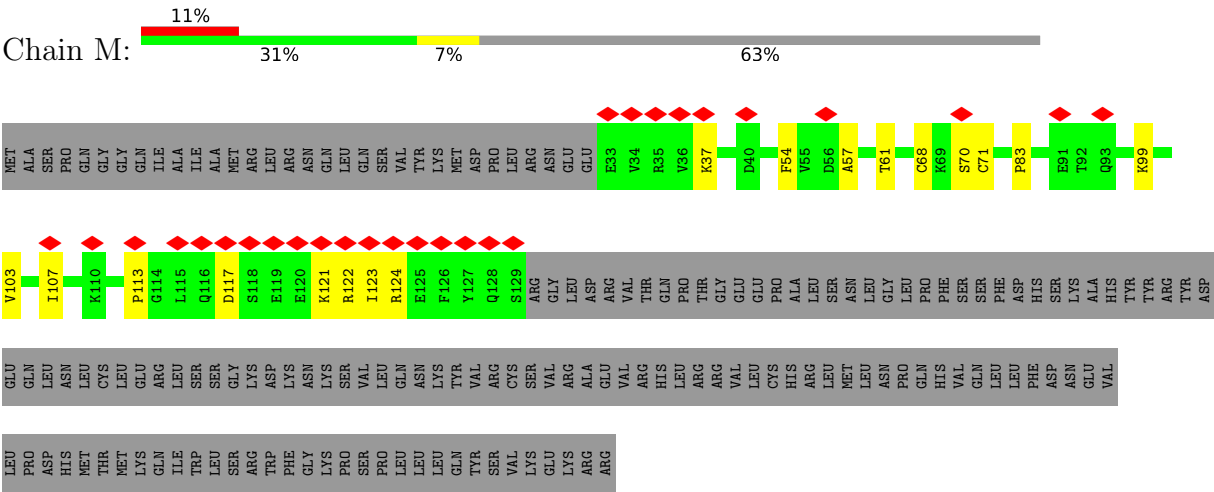


- Molecule 10: Ubiquitin





● Molecule 11: Polycomb group RING finger protein 1





## 4 Experimental information

Property	Value	Source
EM reconstruction method	SINGLE PARTICLE	Depositor
Imposed symmetry	POINT, Not provided	
Number of particles used	45415	Depositor
Resolution determination method	FSC 0.143 CUT-OFF	Depositor
CTF correction method	PHASE FLIPPING AND AMPLITUDE CORRECTION	Depositor
Microscope	TFS KRIOS	Depositor
Voltage (kV)	300	Depositor
Electron dose ( $e^-/\text{\AA}^2$ )	50	Depositor
Minimum defocus (nm)	800	Depositor
Maximum defocus (nm)	3000	Depositor
Magnification	Not provided	
Image detector	GATAN K3 (6k x 4k)	Depositor
Maximum map value	0.096	Depositor
Minimum map value	-0.043	Depositor
Average map value	-0.000	Depositor
Map value standard deviation	0.004	Depositor
Recommended contour level	0.015	Depositor
Map size (Å)	264.0, 264.0, 264.0	wwPDB
Map dimensions	240, 240, 240	wwPDB
Map angles (°)	90.0, 90.0, 90.0	wwPDB
Pixel spacing (Å)	1.1, 1.1, 1.1	Depositor



## 5 Model quality

### 5.1 Standard geometry

Bond lengths and bond angles in the following residue types are not validated in this section: ZN

The Z score for a bond length (or angle) is the number of standard deviations the observed value is removed from the expected value. A bond length (or angle) with  $|Z| > 5$  is considered an outlier worth inspection. RMSZ is the root-mean-square of all Z scores of the bond lengths (or angles).

Mol	Chain	Bond lengths		Bond angles	
		RMSZ	# Z  >5	RMSZ	# Z  >5
1	A	0.10	0/803	0.24	0/1078
1	E	0.07	0/803	0.19	0/1078
2	B	0.08	0/669	0.21	0/894
2	F	0.08	0/651	0.23	0/873
3	C	0.09	0/805	0.21	0/1088
3	G	0.09	0/823	0.22	0/1110
4	D	0.08	0/722	0.18	0/973
4	H	0.08	0/727	0.20	0/980
5	I	0.17	0/3289	0.37	0/5069
6	J	0.16	0/3357	0.33	0/5184
7	N	0.09	0/807	0.29	0/1091
8	P	0.10	0/1206	0.26	0/1643
9	O	0.08	0/609	0.26	0/819
10	R	0.09	0/607	0.29	0/816
11	M	0.09	0/802	0.30	0/1081
All	All	0.12	0/16680	0.29	0/23777

There are no bond length outliers.

There are no bond angle outliers.

There are no chirality outliers.

There are no planarity outliers.

### 5.2 Too-close contacts

In the following table, the Non-H and H(model) columns list the number of non-hydrogen atoms and hydrogen atoms in the chain respectively. The H(added) column lists the number of hydrogen atoms added and optimized by MolProbity. The Clashes column lists the number of clashes within the asymmetric unit, whereas Symm-Clashes lists symmetry-related clashes.



Mol	Chain	Non-H	H(model)	H(added)	Clashes	Symm-Clashes
1	A	791	0	828	13	0
1	E	791	0	828	8	0
2	B	662	0	709	7	0
2	F	644	0	690	4	0
3	C	795	0	846	7	0
3	G	813	0	872	9	0
4	D	711	0	727	4	0
4	H	716	0	732	7	0
5	I	2935	0	1615	52	0
6	J	2990	0	1628	70	0
7	N	793	0	810	17	0
8	P	1171	0	1157	22	0
9	O	603	0	631	13	0
10	R	601	0	629	16	0
11	M	789	0	801	13	0
12	M	2	0	0	0	0
12	N	2	0	0	0	0
All	All	15809	0	13503	232	0

The all-atom clashscore is defined as the number of clashes found per 1000 atoms (including hydrogen atoms). The all-atom clashscore for this structure is 8.

All (232) close contacts within the same asymmetric unit are listed below, sorted by their clash magnitude.

Atom-1	Atom-2	Interatomic distance (Å)	Clash overlap (Å)
11:M:68:CYS:HB2	11:M:71:CYS:SG	2.18	0.83
2:B:92:ARG:HH22	4:D:98:LEU:HD22	1.50	0.76
10:R:62:GLN:NE2	10:R:64:GLU:O	2.23	0.69
9:O:55:THR:HG22	9:O:56:LEU:H	1.58	0.67
9:O:56:LEU:HA	9:O:59:TYR:HB2	1.76	0.66
5:I:17:DC:H2''	5:I:18:DC:C5	2.31	0.66
5:I:48:DT:H2''	5:I:49:DA:C8	2.31	0.66
8:P:75:HIS:HB3	8:P:78:ILE:HB	1.78	0.65
8:P:57:PRO:HB2	8:P:63:LYS:HZ3	1.62	0.63
7:N:72:CYS:HB2	7:N:75:CYS:SG	2.38	0.63
10:R:5:VAL:HA	10:R:67:LEU:HD22	1.79	0.63
5:I:114:DG:H2''	5:I:115:DT:H5'	1.82	0.61
4:H:64:ASN:O	4:H:68:GLU:HG2	2.01	0.61
9:O:7:THR:HG23	9:O:9:THR:H	1.66	0.61
3:G:108:LEU:HD12	3:G:109:PRO:HD2	1.82	0.60
6:J:50:DT:H2'	6:J:51:DT:H71	1.83	0.60
10:R:5:VAL:HG11	10:R:30:ILE:HD11	1.84	0.60

*Continued on next page...*



*Continued from previous page...*

Atom-1	Atom-2	Interatomic distance (Å)	Clash overlap (Å)
5:I:27:DT:H2''	5:I:28:DC:C5	2.36	0.59
6:J:3:DC:H2''	6:J:4:DG:C8	2.38	0.59
10:R:7:THR:HG22	10:R:8:LEU:H	1.67	0.59
6:J:14:DA:H2''	6:J:15:DT:H5'	1.84	0.58
4:H:76:ARG:NH1	4:H:80:TYR:OH	2.37	0.58
5:I:113:DA:H2''	5:I:114:DG:H5''	1.85	0.58
5:I:19:DG:H2''	5:I:20:DA:N7	2.19	0.58
6:J:35:DT:H2''	6:J:36:DA:C8	2.39	0.58
6:J:95:DG:H2'	6:J:96:DT:H71	1.87	0.57
9:O:73:LEU:O	9:O:74:ARG:NE	2.35	0.57
5:I:109:DC:H2''	5:I:110:DC:C5	2.40	0.56
5:I:120:DA:H2''	5:I:121:DG:N7	2.20	0.56
7:N:16:THR:OG1	7:N:17:TRP:N	2.36	0.56
5:I:25:DG:H1	6:J:123:DC:H42	1.53	0.56
5:I:89:DT:H2''	5:I:90:DA:N7	2.21	0.56
1:A:46:VAL:O	1:A:50:GLU:HG3	2.06	0.55
8:P:55:HIS:HB3	8:P:66:LYS:HB3	1.88	0.55
6:J:9:DT:H2''	6:J:10:DA:H5'	1.89	0.54
9:O:17:VAL:HG21	9:O:29:LYS:HG2	1.90	0.54
7:N:23:GLU:HB2	11:M:70:SER:HB3	1.89	0.54
5:I:138:DT:H2''	5:I:139:DA:C8	2.43	0.54
6:J:38:DG:H2''	6:J:39:DG:C8	2.43	0.54
11:M:54:PHE:HB3	11:M:57:ALA:HB2	1.90	0.54
5:I:21:DG:H2''	5:I:22:DG:H5''	1.90	0.53
6:J:94:DG:H2'	6:J:95:DG:H8	1.72	0.53
6:J:109:DT:H2''	6:J:110:DA:C8	2.44	0.53
7:N:80:LEU:HD21	7:N:94:LEU:HD23	1.91	0.53
7:N:38:ILE:HD13	11:M:113:PRO:HD3	1.90	0.53
9:O:39:ASP:O	9:O:72:ARG:NH1	2.42	0.53
10:R:37:PRO:O	10:R:41:GLN:NE2	2.41	0.53
3:C:65:LEU:HB3	3:C:86:ALA:HB1	1.92	0.52
8:P:45:TYR:OH	8:P:74:TYR:O	2.27	0.52
6:J:37:DG:H2''	6:J:38:DG:C8	2.43	0.52
10:R:51:GLU:OE1	10:R:59:TYR:OH	2.27	0.52
1:A:50:GLU:HA	1:A:53:ARG:HG2	1.92	0.52
4:H:113:LYS:NZ	9:O:76:CYS:O	2.43	0.52
6:J:89:DT:H2''	6:J:90:DA:C8	2.45	0.52
11:M:121:LYS:HG2	11:M:124:ARG:NH2	2.25	0.52
3:G:68:ASN:OD1	3:G:71:ARG:NH2	2.43	0.51
6:J:27:DC:H2''	6:J:28:DT:C5	2.45	0.51
6:J:36:DA:H2''	6:J:37:DG:C8	2.46	0.51

*Continued on next page...*



*Continued from previous page...*

Atom-1	Atom-2	Interatomic distance (Å)	Clash overlap (Å)
5:I:101:DG:H2''	5:I:102:DG:N7	2.26	0.50
1:A:106:ASP:OD1	1:A:131:ARG:NH1	2.40	0.50
8:P:101:LYS:HE3	10:R:8:LEU:O	2.11	0.50
8:P:76:PRO:HB3	8:P:127:TYR:CE2	2.46	0.50
6:J:98:DC:H2''	6:J:99:DT:C5	2.47	0.50
5:I:37:DG:H1	6:J:111:DC:H5	1.58	0.50
6:J:12:DA:H2'	6:J:13:DT:H71	1.92	0.50
6:J:82:DG:H2'	6:J:83:DT:H71	1.94	0.49
9:O:15:LEU:HD23	9:O:17:VAL:H	1.76	0.49
8:P:125:ARG:O	8:P:128:LYS:HG3	2.12	0.49
7:N:27:THR:OG1	11:M:122:ARG:NH2	2.45	0.49
2:B:59:LYS:O	2:B:63:GLU:HG3	2.12	0.49
5:I:144:DC:H2''	5:I:145:DG:C8	2.48	0.49
6:J:112:DG:H2''	6:J:113:DA:H8	1.77	0.49
8:P:35:ALA:HB3	8:P:52:LEU:HB2	1.94	0.49
2:F:35:ARG:NH1	5:I:82:DC:OP2	2.38	0.49
5:I:123:DC:H2''	5:I:124:DA:C8	2.48	0.48
5:I:140:DC:H2''	5:I:141:DA:C8	2.48	0.48
5:I:20:DA:H2''	5:I:21:DG:C8	2.49	0.48
6:J:55:DG:H2''	6:J:56:DG:C8	2.48	0.48
7:N:22:TYR:CE2	11:M:123:ILE:HA	2.47	0.48
11:M:103:VAL:O	11:M:107:ILE:HG12	2.14	0.48
2:F:92:ARG:NH2	4:H:98:LEU:HD23	2.29	0.48
5:I:89:DT:H2''	5:I:90:DA:C8	2.48	0.48
6:J:93:DC:H2''	6:J:94:DG:H8	1.79	0.48
1:E:121:PRO:HB3	2:F:53:GLU:HG3	1.95	0.48
6:J:113:DA:H2''	6:J:114:DC:H5'	1.95	0.48
7:N:53:ILE:HG12	8:P:95:PRO:HB2	1.95	0.48
8:P:135:ASN:O	8:P:139:ARG:HG3	2.13	0.48
1:A:113:HIS:CG	1:E:126:LEU:HD22	2.49	0.48
5:I:69:DA:H2''	5:I:70:DC:C5	2.49	0.48
5:I:77:DT:H2''	5:I:78:DC:C6	2.49	0.48
10:R:2:GLN:NE2	10:R:16:GLU:OE1	2.37	0.48
1:A:58:THR:HG21	3:G:81:ARG:HD3	1.95	0.47
3:G:79:ILE:HG12	3:G:82:HIS:CE1	2.49	0.47
8:P:59:ASP:HB2	8:P:63:LYS:HZ2	1.79	0.47
6:J:46:DC:H2''	6:J:47:DC:C6	2.49	0.47
8:P:72:ARG:NH1	8:P:80:SER:O	2.46	0.47
5:I:129:DT:H2''	5:I:130:DC:C5	2.48	0.47
10:R:15:LEU:HD13	10:R:29:LYS:HB3	1.97	0.47
5:I:6:DG:H2''	5:I:7:DA:C8	2.49	0.47

*Continued on next page...*



*Continued from previous page...*

Atom-1	Atom-2	Interatomic distance (Å)	Clash overlap (Å)
9:O:5:VAL:HG12	9:O:67:LEU:HB2	1.97	0.47
9:O:42:ARG:NH2	11:M:83:PRO:O	2.47	0.47
4:H:35:ALA:HA	4:H:56:MET:HE2	1.97	0.47
5:I:60:DA:H2''	5:I:61:DA:C8	2.50	0.47
5:I:134:DT:H2''	5:I:135:DA:O4'	2.15	0.47
8:P:137:ILE:O	8:P:140:GLU:HG3	2.14	0.47
5:I:64:DC:H2''	5:I:65:DA:C8	2.50	0.47
5:I:125:DC:H2''	5:I:126:DG:H5''	1.96	0.47
6:J:101:DG:H2''	6:J:102:DA:C8	2.50	0.47
11:M:117:ASP:N	11:M:117:ASP:OD1	2.47	0.47
6:J:72:DC:H2''	6:J:73:DA:H8	1.80	0.47
6:J:79:DT:H2''	6:J:80:DA:C8	2.49	0.47
2:B:47:SER:OG	2:B:48:GLY:N	2.47	0.46
6:J:120:DG:H2''	6:J:121:DA:N7	2.29	0.46
1:E:73:GLU:O	1:E:76:GLN:HG2	2.15	0.46
6:J:67:DG:H2''	6:J:68:DG:N7	2.30	0.46
5:I:5:DA:H5'	5:I:5:DA:C8	2.50	0.46
5:I:78:DC:H2''	5:I:79:DC:C5	2.50	0.46
5:I:141:DA:H1'	5:I:142:DT:H5'	1.96	0.46
6:J:26:DC:H2''	6:J:27:DC:C5	2.50	0.46
1:A:63:ARG:HD3	6:J:91:DA:H4'	1.97	0.46
6:J:130:DG:H2''	6:J:131:DG:N7	2.30	0.46
6:J:142:DC:H5''	6:J:142:DC:H6	1.81	0.46
3:C:95:LYS:HE3	3:C:95:LYS:HB2	1.65	0.46
1:A:58:THR:HG22	3:G:106:GLY:HA3	1.96	0.46
5:I:48:DT:H2''	5:I:49:DA:N7	2.29	0.46
5:I:82:DC:H2''	5:I:83:DG:C8	2.51	0.46
6:J:69:DG:H2''	6:J:70:DG:C8	2.50	0.46
6:J:99:DT:H2''	6:J:100:DA:N7	2.31	0.46
6:J:140:DT:H2'	6:J:141:DT:H71	1.98	0.46
10:R:43:LEU:HD21	10:R:67:LEU:HD21	1.97	0.46
1:E:61:LEU:HD12	2:F:37:LEU:HD23	1.97	0.46
7:N:56:ASP:OD1	7:N:57:MET:HG3	2.16	0.46
10:R:7:THR:HG22	10:R:8:LEU:N	2.29	0.46
5:I:79:DC:H2''	5:I:80:DC:C5	2.51	0.46
6:J:30:DG:H2''	6:J:31:DA:H8	1.81	0.46
6:J:127:DC:H2''	6:J:128:DT:C5	2.51	0.46
3:C:88:ARG:NH1	3:C:94:ASN:OD1	2.48	0.45
3:C:63:LEU:HD13	4:D:42:LEU:HB2	1.97	0.45
6:J:112:DG:H2''	6:J:113:DA:C8	2.51	0.45
7:N:106:PHE:O	7:N:110:ILE:HG12	2.15	0.45

*Continued on next page...*



*Continued from previous page...*

Atom-1	Atom-2	Interatomic distance (Å)	Clash overlap (Å)
1:E:42:ARG:NH2	6:J:69:DG:OP1	2.49	0.45
6:J:129:DC:H2''	6:J:130:DG:C8	2.52	0.45
6:J:127:DC:H2''	6:J:128:DT:C6	2.52	0.45
1:E:115:LYS:HB2	1:E:115:LYS:HE2	1.82	0.45
6:J:85:DC:H2''	6:J:86:DG:C8	2.52	0.45
6:J:108:DC:H2''	6:J:109:DT:C5	2.52	0.45
5:I:68:DT:H2''	5:I:69:DA:N7	2.32	0.44
9:O:19:PRO:O	9:O:57:SER:OG	2.27	0.44
10:R:67:LEU:HD23	10:R:67:LEU:O	2.17	0.44
1:A:86:SER:OG	5:I:50:DG:OP2	2.34	0.44
2:B:59:LYS:NZ	2:B:63:GLU:OE2	2.44	0.44
3:C:61:GLU:O	3:C:64:GLU:HG3	2.17	0.44
3:G:61:GLU:OE2	7:N:98:ARG:NH1	2.48	0.44
5:I:121:DG:H2''	5:I:122:DG:C8	2.52	0.44
6:J:20:DC:H2''	6:J:21:DA:C8	2.52	0.44
5:I:14:DG:H2'	5:I:15:DT:H71	1.99	0.44
6:J:78:DG:H2''	6:J:79:DT:C5	2.53	0.44
10:R:7:THR:HG21	10:R:11:LYS:HB3	1.99	0.44
5:I:119:DC:H2''	5:I:120:DA:C8	2.53	0.44
6:J:93:DC:C2	6:J:94:DG:N7	2.85	0.44
6:J:123:DC:H2''	6:J:124:DG:H8	1.82	0.44
10:R:6:LYS:HA	10:R:12:THR:HG23	2.00	0.44
1:A:51:ILE:HG13	2:B:39:ARG:HD2	2.00	0.44
1:A:97:GLU:HG2	2:B:37:LEU:HD21	2.00	0.44
11:M:37:LYS:HA	11:M:37:LYS:HD2	1.73	0.44
6:J:48:DC:H2''	6:J:49:DC:C5	2.53	0.43
8:P:31:PHE:HA	8:P:56:PHE:HB2	2.00	0.43
8:P:79:ASN:N	8:P:83:SER:O	2.51	0.43
9:O:8:LEU:HD23	9:O:8:LEU:H	1.83	0.43
6:J:29:DG:H2''	6:J:30:DG:H8	1.83	0.43
3:G:88:ARG:HD3	3:G:88:ARG:HA	1.81	0.43
6:J:118:DT:H2''	6:J:119:DT:C6	2.54	0.43
7:N:49:LEU:HD22	7:N:110:ILE:HD11	2.01	0.43
4:D:43:LYS:HD3	4:D:43:LYS:HA	1.76	0.43
5:I:104:DT:H2'	5:I:105:DT:H71	2.00	0.43
7:N:68:LEU:HD12	11:M:99:LYS:HG2	2.00	0.43
6:J:94:DG:H2''	6:J:95:DG:O5'	2.19	0.43
5:I:59:DA:H2''	5:I:60:DA:H8	1.83	0.42
8:P:75:HIS:CG	8:P:76:PRO:HD2	2.54	0.42
10:R:62:GLN:NE2	10:R:64:GLU:H	2.17	0.42
1:A:79:LYS:HB3	1:A:82:LEU:HD11	2.00	0.42

*Continued on next page...*



*Continued from previous page...*

Atom-1	Atom-2	Interatomic distance (Å)	Clash overlap (Å)
5:I:90:DA:H1'	5:I:91:DA:N7	2.35	0.42
6:J:18:DG:H2''	6:J:19:DA:C8	2.54	0.42
8:P:142:THR:O	8:P:147:MET:HG2	2.19	0.42
1:E:42:ARG:HG2	1:E:42:ARG:HH11	1.84	0.42
6:J:57:DT:H4'	6:J:58:DT:OP1	2.18	0.42
7:N:22:TYR:O	7:N:26:ARG:N	2.51	0.42
6:J:40:DA:H2''	6:J:41:DG:H8	1.83	0.42
6:J:51:DT:C2	6:J:52:DG:C8	3.07	0.42
8:P:59:ASP:HB2	8:P:63:LYS:NZ	2.34	0.42
5:I:62:DC:H2''	5:I:63:DG:C8	2.55	0.42
5:I:68:DT:H2''	5:I:69:DA:C8	2.55	0.42
6:J:79:DT:H2''	6:J:80:DA:N7	2.35	0.42
3:C:79:ILE:HG12	3:C:82:HIS:CE1	2.55	0.41
3:G:102:ILE:HG23	4:H:58:ILE:HD13	2.02	0.41
8:P:134:TYR:HA	8:P:137:ILE:HG12	2.02	0.41
9:O:1:MET:SD	9:O:2:GLN:N	2.93	0.41
1:A:119:ILE:HD11	2:B:46:ILE:HG23	2.02	0.41
6:J:67:DG:H2''	6:J:68:DG:C8	2.56	0.41
7:N:65:LYS:HG2	11:M:61:THR:HG22	2.02	0.41
5:I:100:DG:H2''	5:I:101:DG:C8	2.56	0.41
5:I:145:DG:H2''	5:I:146:DA:H8	1.85	0.41
6:J:29:DG:H2''	6:J:30:DG:C8	2.55	0.41
6:J:123:DC:H2''	6:J:124:DG:C8	2.55	0.41
4:H:36:ILE:HD12	4:H:36:ILE:H	1.86	0.41
6:J:98:DC:H2''	6:J:99:DT:C6	2.55	0.41
6:J:111:DC:H2''	6:J:112:DG:C8	2.56	0.41
1:E:42:ARG:HG2	1:E:42:ARG:NH1	2.35	0.41
5:I:99:DG:H2''	5:I:100:DG:N7	2.35	0.41
5:I:119:DC:H2''	5:I:120:DA:N7	2.36	0.41
8:P:35:ALA:HB2	8:P:54:ILE:HD11	2.01	0.41
8:P:133:LYS:HA	8:P:133:LYS:HD2	1.84	0.41
1:A:73:GLU:O	1:A:76:GLN:HG2	2.21	0.41
5:I:74:DC:H2'	5:I:75:DT:H71	2.02	0.41
6:J:54:DC:C2	6:J:55:DG:N7	2.89	0.41
6:J:70:DG:H2''	6:J:71:DA:C8	2.56	0.41
7:N:89:THR:O	10:R:9:THR:OG1	2.20	0.41
4:D:103:LEU:HD23	4:D:103:LEU:HA	1.96	0.40
7:N:20:SER:N	7:N:23:GLU:OE2	2.37	0.40
3:C:63:LEU:HD23	3:C:63:LEU:HA	1.89	0.40
6:J:31:DA:H2''	6:J:32:DG:H8	1.86	0.40
3:G:113:SER:HA	3:G:116:LEU:HD12	2.03	0.40

*Continued on next page...*



Continued from previous page...

Atom-1	Atom-2	Interatomic distance (Å)	Clash overlap (Å)
5:I:112:DT:H2''	5:I:113:DA:N7	2.37	0.40
6:J:61:DA:H2''	6:J:62:DA:H8	1.85	0.40
5:I:67:DG:H2''	5:I:68:DT:C6	2.57	0.40
6:J:15:DT:H2''	6:J:16:DC:C5	2.56	0.40
5:I:60:DA:H2''	5:I:61:DA:H8	1.86	0.40
6:J:42:DT:C2	6:J:43:DA:N7	2.89	0.40
6:J:94:DG:H2'	6:J:95:DG:C8	2.55	0.40
6:J:113:DA:C4	6:J:114:DC:C5	3.09	0.40
6:J:128:DT:H2''	6:J:129:DC:C6	2.57	0.40
8:P:52:LEU:HD22	8:P:69:PHE:CD1	2.56	0.40

There are no symmetry-related clashes.

## 5.3 Torsion angles [i](#)

### 5.3.1 Protein backbone [i](#)

In the following table, the Percentiles column shows the percent Ramachandran outliers of the chain as a percentile score with respect to all PDB entries followed by that with respect to all EM entries.

The Analysed column shows the number of residues for which the backbone conformation was analysed, and the total number of residues.

Mol	Chain	Analysed	Favoured	Allowed	Outliers	Percentiles	
1	A	94/136 (69%)	93 (99%)	1 (1%)	0	100	100
1	E	94/136 (69%)	94 (100%)	0	0	100	100
2	B	81/103 (79%)	78 (96%)	3 (4%)	0	100	100
2	F	78/103 (76%)	76 (97%)	2 (3%)	0	100	100
3	C	101/130 (78%)	100 (99%)	1 (1%)	0	100	100
3	G	103/130 (79%)	102 (99%)	1 (1%)	0	100	100
4	D	89/126 (71%)	89 (100%)	0	0	100	100
4	H	90/126 (71%)	90 (100%)	0	0	100	100
7	N	98/336 (29%)	91 (93%)	7 (7%)	0	100	100
8	P	144/147 (98%)	131 (91%)	13 (9%)	0	100	100
9	O	74/76 (97%)	66 (89%)	8 (11%)	0	100	100
10	R	74/76 (97%)	63 (85%)	11 (15%)	0	100	100

Continued on next page...



*Continued from previous page...*

Mol	Chain	Analysed	Favoured	Allowed	Outliers	Percentiles	
11	M	95/259 (37%)	88 (93%)	7 (7%)	0	100	100
All	All	1215/1884 (64%)	1161 (96%)	54 (4%)	0	100	100

There are no Ramachandran outliers to report.

### 5.3.2 Protein sidechains ⓘ

In the following table, the Percentiles column shows the percent sidechain outliers of the chain as a percentile score with respect to all PDB entries followed by that with respect to all EM entries.

The Analysed column shows the number of residues for which the sidechain conformation was analysed, and the total number of residues.

Mol	Chain	Analysed	Rotameric	Outliers	Percentiles	
1	A	84/111 (76%)	84 (100%)	0	100	100
1	E	84/111 (76%)	84 (100%)	0	100	100
2	B	68/79 (86%)	68 (100%)	0	100	100
2	F	67/79 (85%)	67 (100%)	0	100	100
3	C	82/102 (80%)	82 (100%)	0	100	100
3	G	84/102 (82%)	84 (100%)	0	100	100
4	D	78/105 (74%)	78 (100%)	0	100	100
4	H	78/105 (74%)	78 (100%)	0	100	100
7	N	94/297 (32%)	94 (100%)	0	100	100
8	P	131/132 (99%)	131 (100%)	0	100	100
9	O	69/69 (100%)	69 (100%)	0	100	100
10	R	68/68 (100%)	68 (100%)	0	100	100
11	M	93/242 (38%)	93 (100%)	0	100	100
All	All	1080/1602 (67%)	1080 (100%)	0	100	100

There are no protein residues with a non-rotameric sidechain to report.

Sometimes sidechains can be flipped to improve hydrogen bonding and reduce clashes. All (11) such sidechains are listed below:

Mol	Chain	Res	Type
1	A	85	GLN

*Continued on next page...*



*Continued from previous page...*

Mol	Chain	Res	Type
4	D	81	ASN
4	D	92	GLN
2	F	25	ASN
4	H	46	HIS
8	P	92	GLN
8	P	114	ASN
9	O	25	ASN
10	R	25	ASN
10	R	31	GLN
11	M	44	HIS

### 5.3.3 RNA [i](#)

There are no RNA molecules in this entry.

### 5.4 Non-standard residues in protein, DNA, RNA chains [i](#)

There are no non-standard protein/DNA/RNA residues in this entry.

### 5.5 Carbohydrates [i](#)

There are no oligosaccharides in this entry.

### 5.6 Ligand geometry [i](#)

Of 4 ligands modelled in this entry, 4 are monoatomic - leaving 0 for Mogul analysis.

There are no bond length outliers.

There are no bond angle outliers.

There are no chirality outliers.

There are no torsion outliers.

There are no ring outliers.

No monomer is involved in short contacts.

### 5.7 Other polymers [i](#)

There are no such residues in this entry.



## 5.8 Polymer linkage issues ⓘ

There are no chain breaks in this entry.



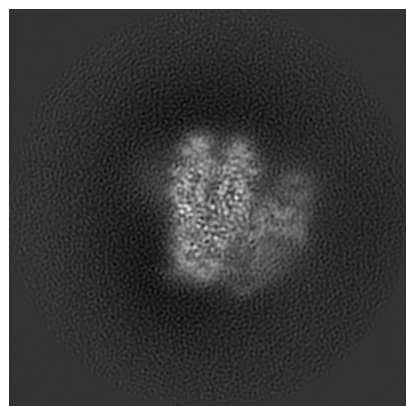
## 6 Map visualisation [i](#)

This section contains visualisations of the EMDB entry EMD-64885. These allow visual inspection of the internal detail of the map and identification of artifacts.

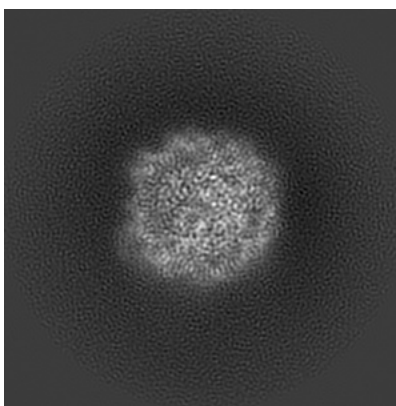
Images derived from a raw map, generated by summing the deposited half-maps, are presented below the corresponding image components of the primary map to allow further visual inspection and comparison with those of the primary map.

### 6.1 Orthogonal projections [i](#)

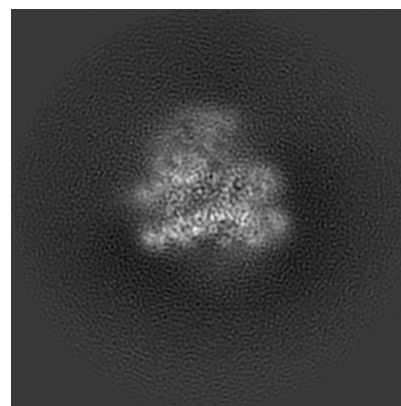
#### 6.1.1 Primary map



X

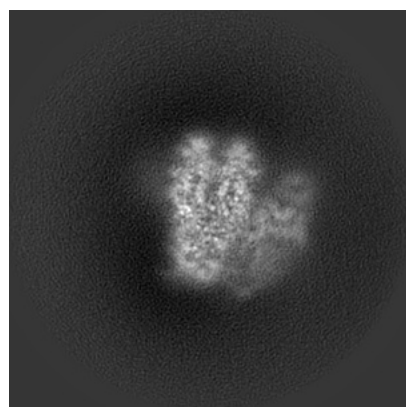


Y

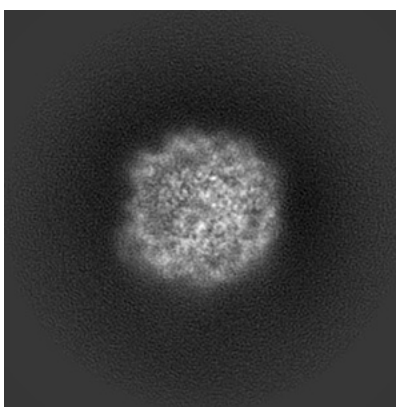


Z

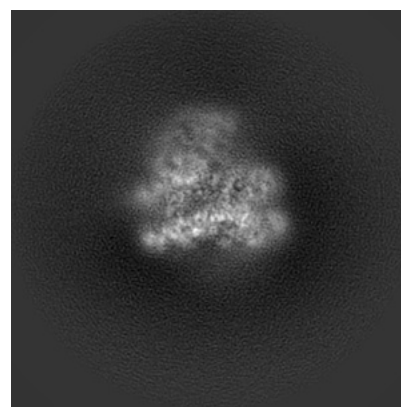
#### 6.1.2 Raw map



X



Y



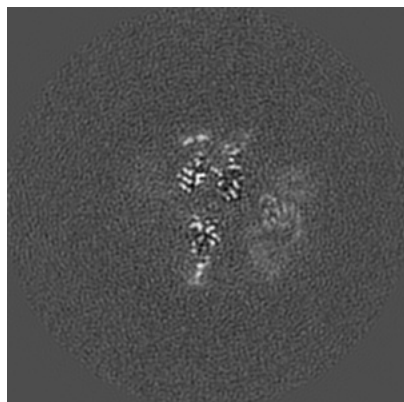
Z

The images above show the map projected in three orthogonal directions.

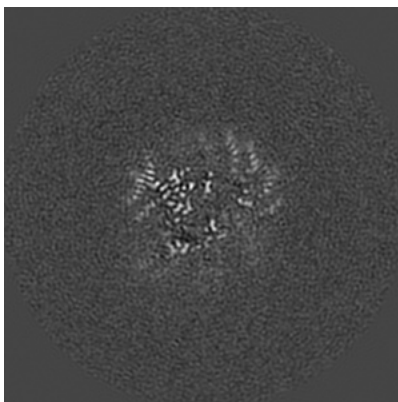


## 6.2 Central slices [i](#)

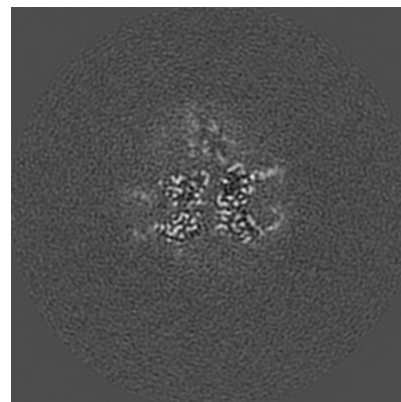
### 6.2.1 Primary map



X Index: 120

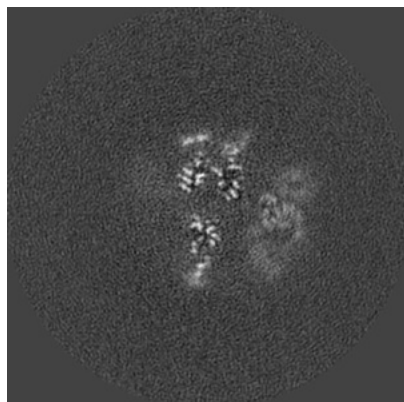


Y Index: 120

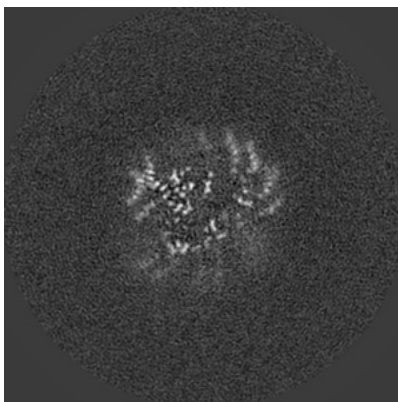


Z Index: 120

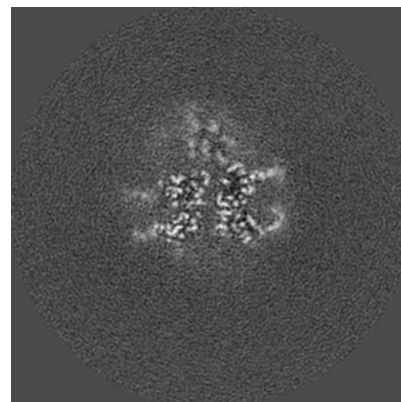
### 6.2.2 Raw map



X Index: 120



Y Index: 120



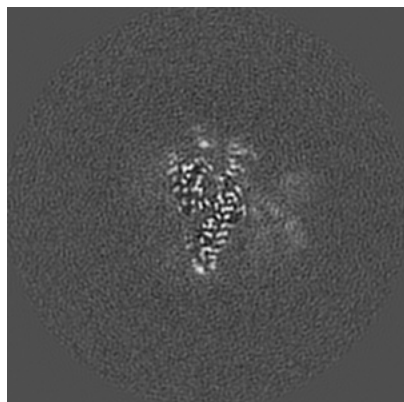
Z Index: 120

The images above show central slices of the map in three orthogonal directions.

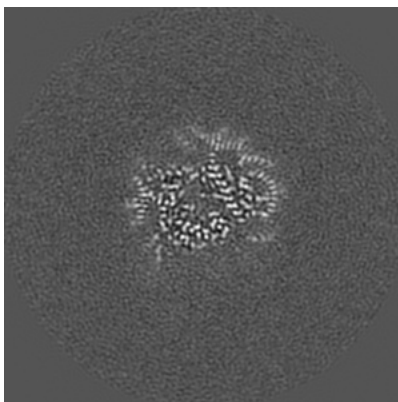


## 6.3 Largest variance slices [i](#)

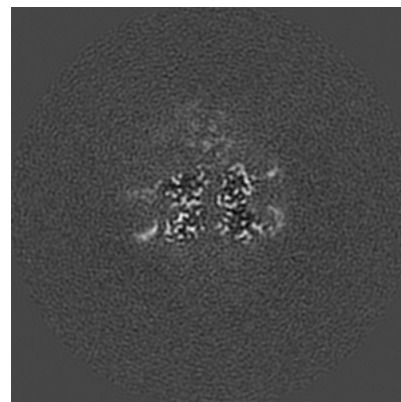
### 6.3.1 Primary map



X Index: 130

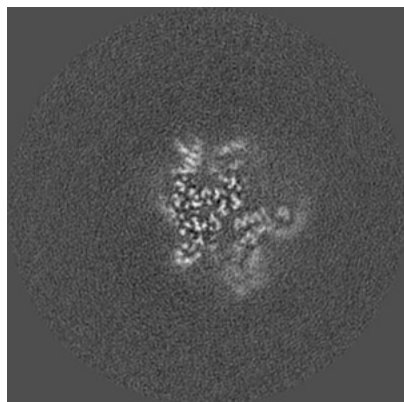


Y Index: 114

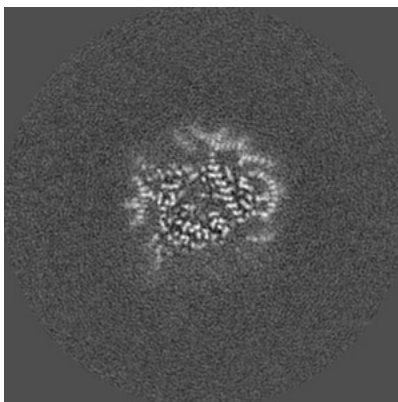


Z Index: 121

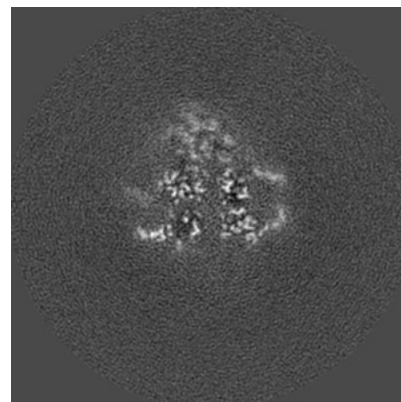
### 6.3.2 Raw map



X Index: 101



Y Index: 114



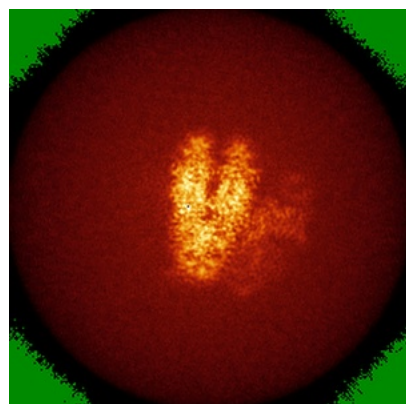
Z Index: 118

The images above show the largest variance slices of the map in three orthogonal directions.

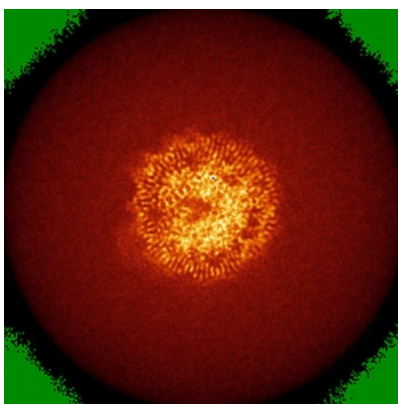


## 6.4 Orthogonal standard-deviation projections (False-color) [i](#)

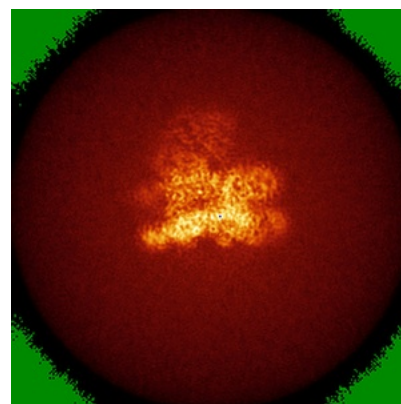
### 6.4.1 Primary map



X

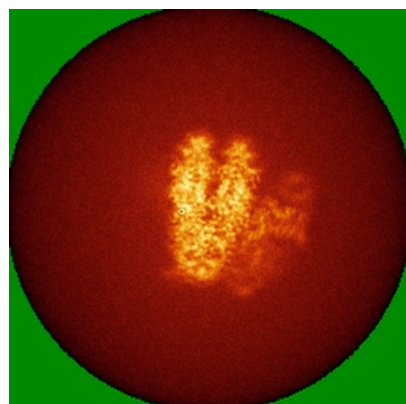


Y

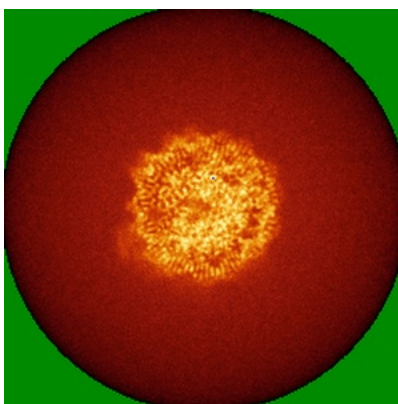


Z

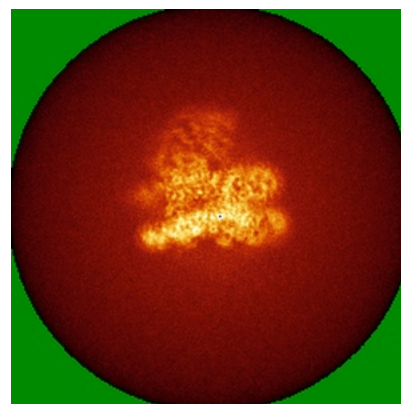
### 6.4.2 Raw map



X



Y



Z

The images above show the map standard deviation projections with false color in three orthogonal directions. Minimum values are shown in green, max in blue, and dark to light orange shades represent small to large values respectively.



## 6.5 Orthogonal surface views [i](#)

### 6.5.1 Primary map



X



Y



Z

The images above show the 3D surface view of the map at the recommended contour level 0.015. These images, in conjunction with the slice images, may facilitate assessment of whether an appropriate contour level has been provided.

### 6.5.2 Raw map



X



Y



Z

These images show the 3D surface of the raw map. The raw map's contour level was selected so that its surface encloses the same volume as the primary map does at its recommended contour level.



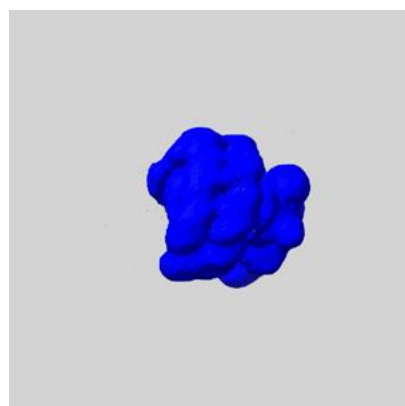
## 6.6 Mask visualisation [i](#)

This section shows the 3D surface view of the primary map at 50% transparency overlaid with the specified mask at 0% transparency

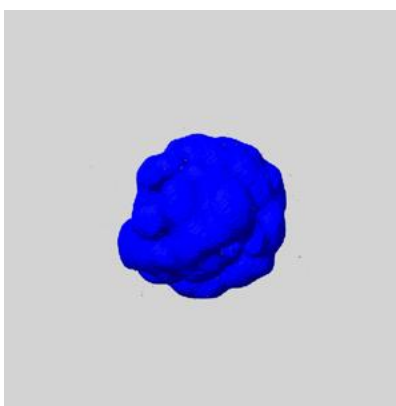
A mask typically either:

- Encompasses the whole structure
- Separates out a domain, a functional unit, a monomer or an area of interest from a larger structure

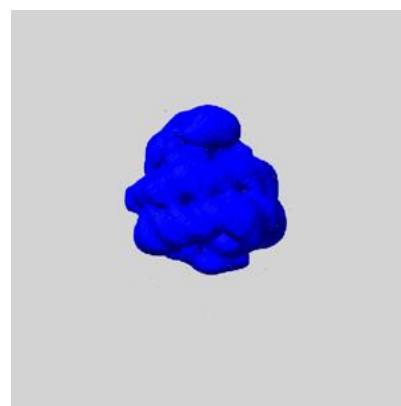
### 6.6.1 emd\_64885\_msk\_1.map [i](#)



X



Y



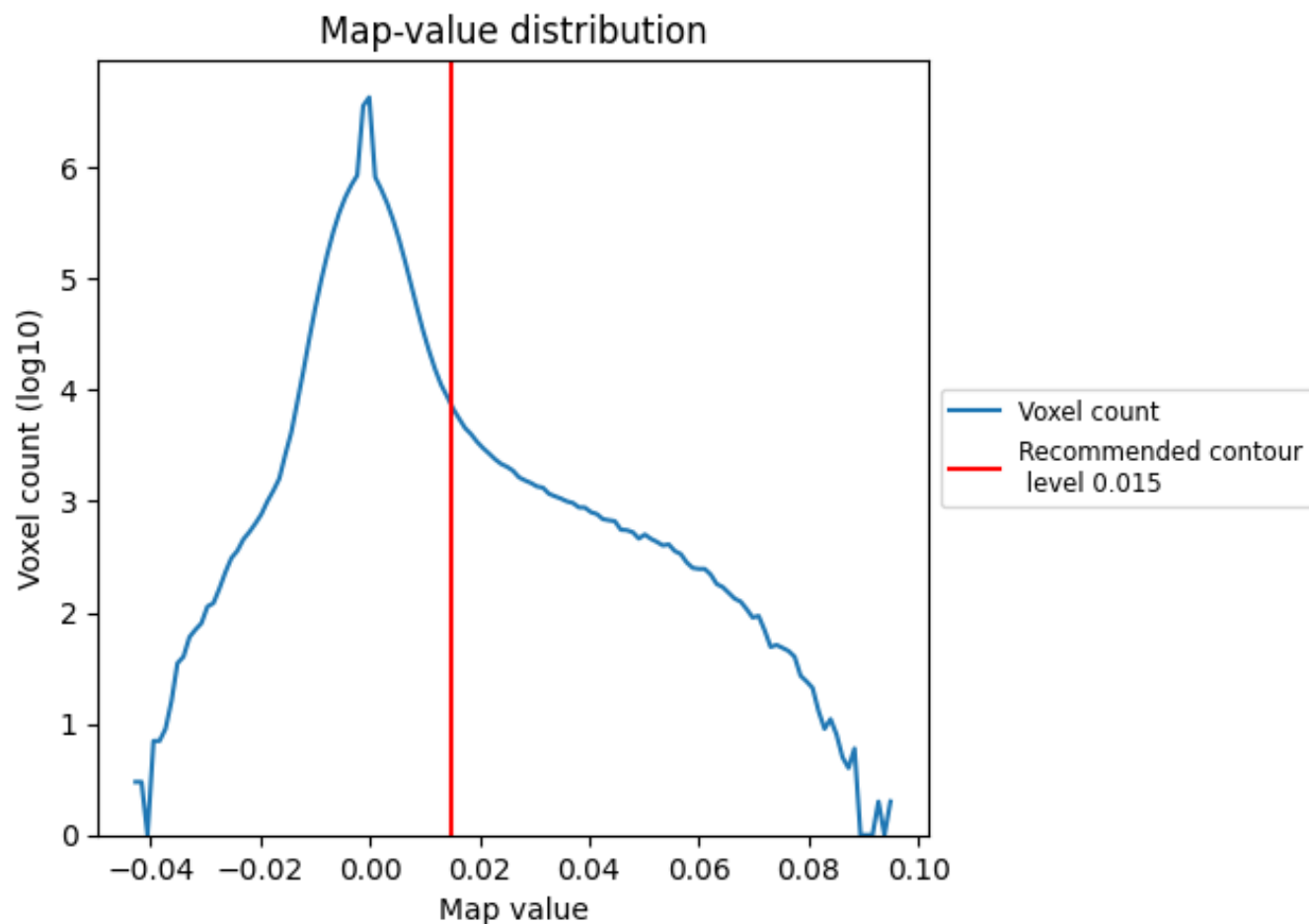
Z



## 7 Map analysis [i](#)

This section contains the results of statistical analysis of the map.

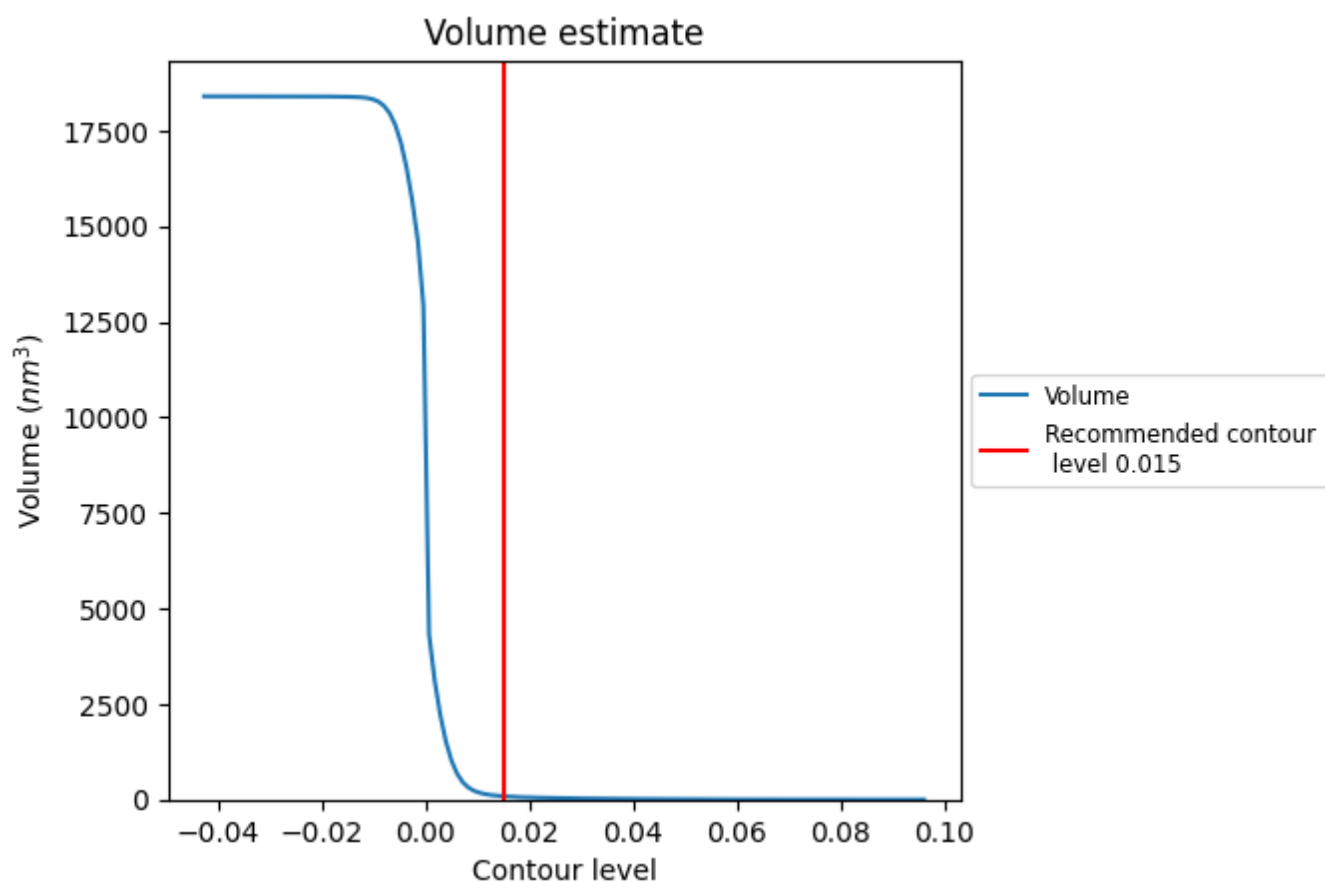
### 7.1 Map-value distribution [i](#)



The map-value distribution is plotted in 128 intervals along the x-axis. The y-axis is logarithmic. A spike in this graph at zero usually indicates that the volume has been masked.



## 7.2 Volume estimate [i](#)

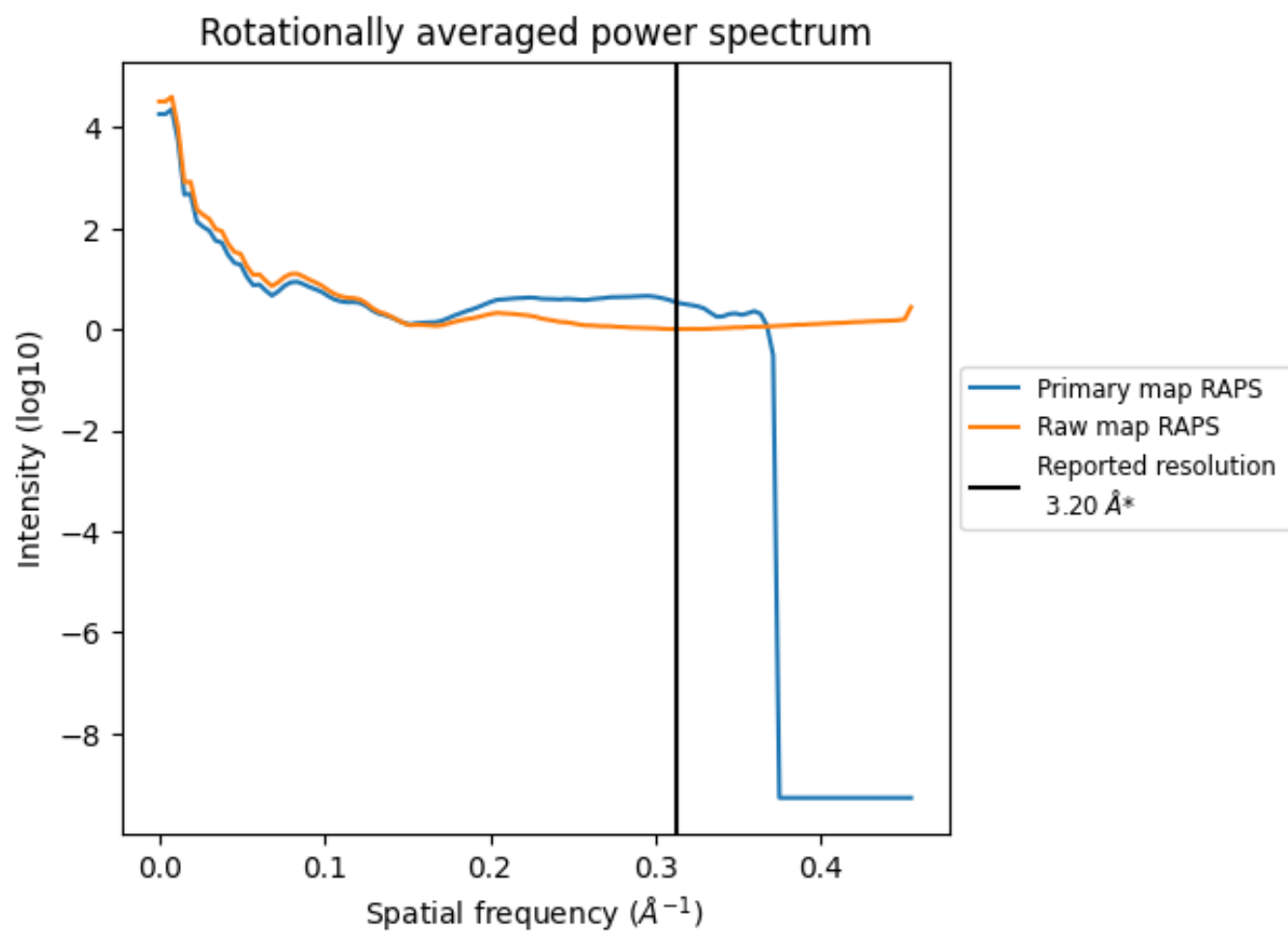


The volume at the recommended contour level is 87 nm<sup>3</sup>; this corresponds to an approximate mass of 79 kDa.

The volume estimate graph shows how the enclosed volume varies with the contour level. The recommended contour level is shown as a vertical line and the intersection between the line and the curve gives the volume of the enclosed surface at the given level.



### 7.3 Rotationally averaged power spectrum ⓘ



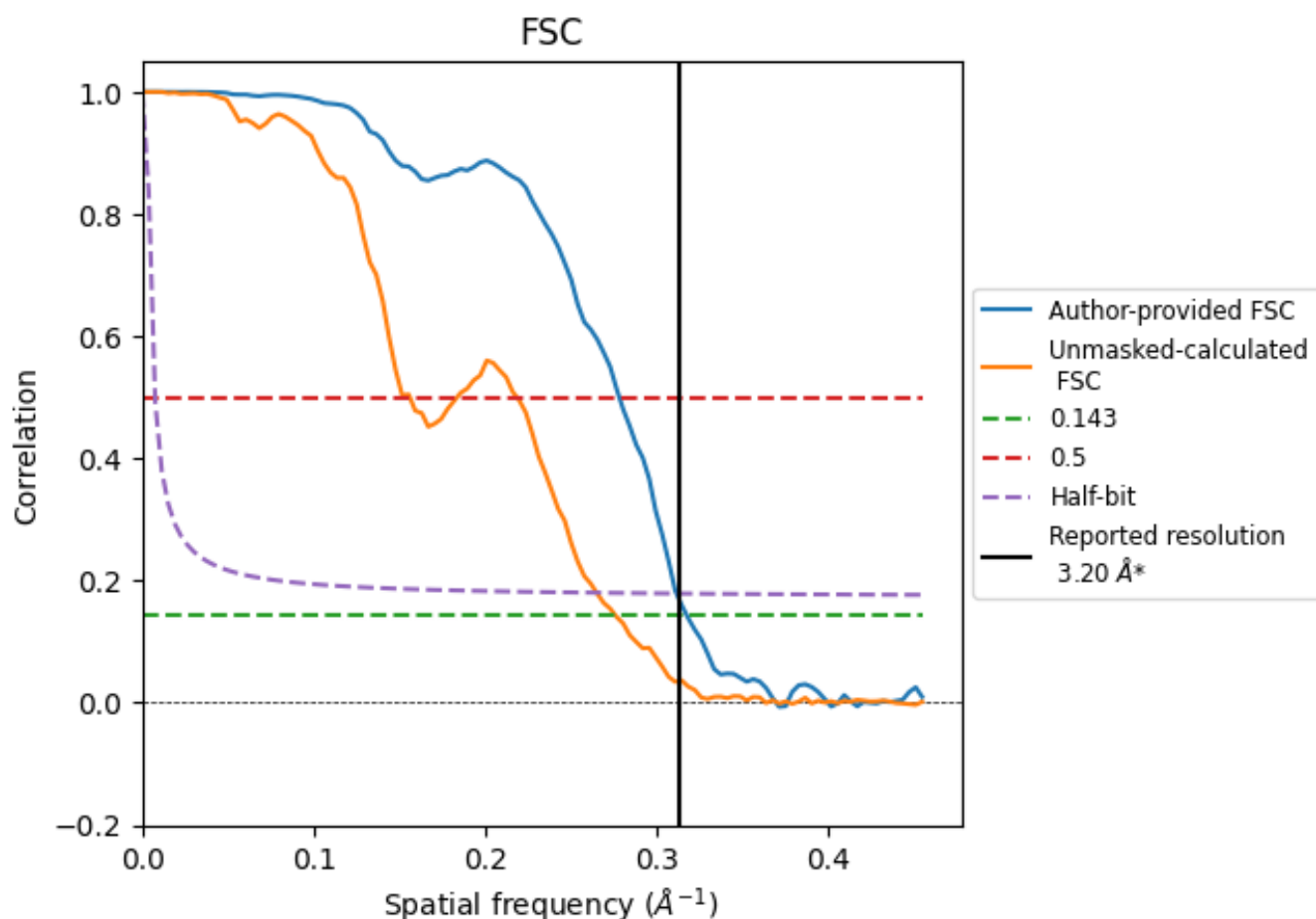
\*Reported resolution corresponds to spatial frequency of 0.312 Å<sup>-1</sup>



## 8 Fourier-Shell correlation [i](#)

Fourier-Shell Correlation (FSC) is the most commonly used method to estimate the resolution of single-particle and subtomogram-averaged maps. The shape of the curve depends on the imposed symmetry, mask and whether or not the two 3D reconstructions used were processed from a common reference. The reported resolution is shown as a black line. A curve is displayed for the half-bit criterion in addition to lines showing the 0.143 gold standard cut-off and 0.5 cut-off.

### 8.1 FSC [i](#)



\*Reported resolution corresponds to spatial frequency of  $0.312 \text{ \AA}^{-1}$



## 8.2 Resolution estimates [i](#)

Resolution estimate (Å)	Estimation criterion (FSC cut-off)		
	0.143	0.5	Half-bit
Reported by author	3.20	-	-
Author-provided FSC curve	3.15	3.60	3.21
Unmasked-calculated*	3.63	6.41	3.78

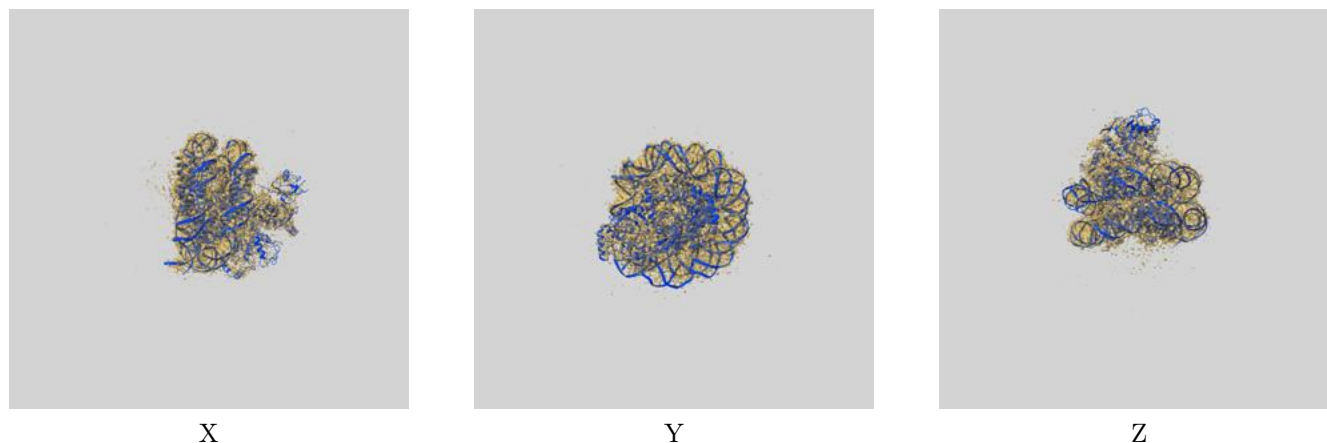
\*Resolution estimate based on FSC curve calculated by comparison of deposited half-maps. The value from deposited half-maps intersecting FSC 0.143 CUT-OFF 3.63 differs from the reported value 3.2 by more than 10 %



## 9 Map-model fit [i](#)

This section contains information regarding the fit between EMDB map EMD-64885 and PDB model 9V9R. Per-residue inclusion information can be found in [section 3](#) on [page 7](#).

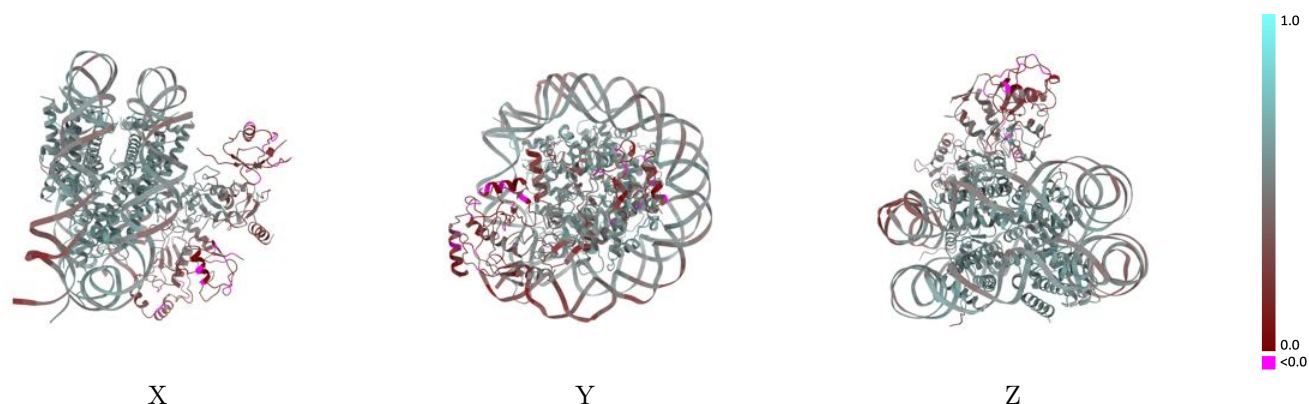
### 9.1 Map-model overlay [i](#)



The images above show the 3D surface view of the map at the recommended contour level 0.015 at 50% transparency in yellow overlaid with a ribbon representation of the model coloured in blue. These images allow for the visual assessment of the quality of fit between the atomic model and the map.

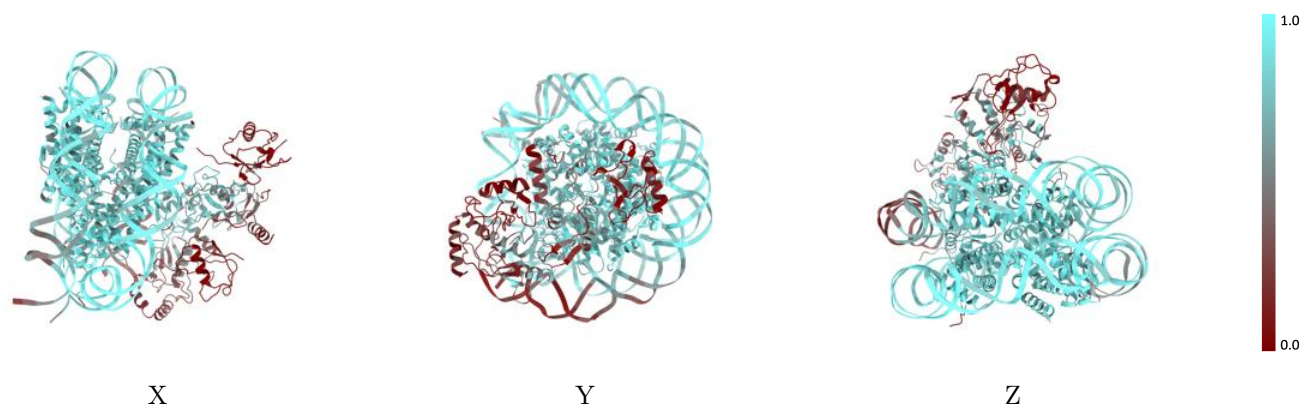


## 9.2 Q-score mapped to coordinate model [i](#)



The images above show the model with each residue coloured according to its Q-score. This shows their resolvability in the map with higher Q-score values reflecting better resolvability. Please note: Q-score is calculating the resolvability of atoms, and thus high values are only expected at resolutions at which atoms can be resolved. Low Q-score values may therefore be expected for many entries.

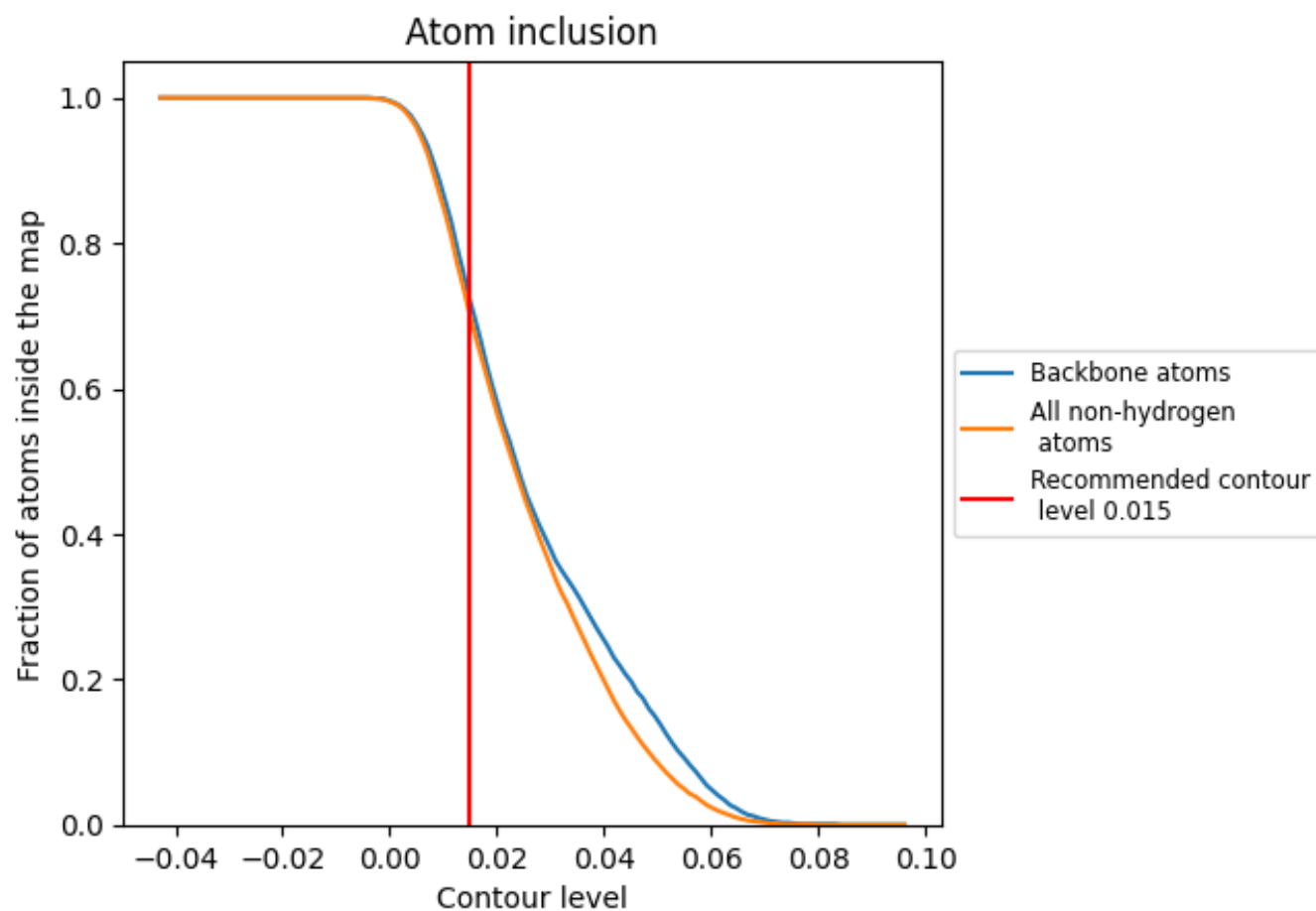
## 9.3 Atom inclusion mapped to coordinate model [i](#)



The images above show the model with each residue coloured according to its atom inclusion. This shows to what extent they are inside the map at the recommended contour level (0.015).



## 9.4 Atom inclusion [i](#)



































At the recommended contour level, 72% of all backbone atoms, 70% of all non-hydrogen atoms, are inside the map.



## 9.5 Map-model fit summary

The table lists the average atom inclusion at the recommended contour level (0.015) and Q-score for the entire model and for each chain.

Chain	Atom inclusion	Q-score
All	 0.7000	 0.4800
A	 0.8680	 0.5860
B	 0.8910	 0.5850
C	 0.8800	 0.5910
D	 0.8790	 0.5650
E	 0.8660	 0.5870
F	 0.9040	 0.5930
G	 0.8630	 0.5840
H	 0.8710	 0.5720
I	 0.7640	 0.4830
J	 0.7610	 0.4740
M	 0.5370	 0.4430
N	 0.6030	 0.4690
O	 0.0560	 0.1930
P	 0.3440	 0.3100
R	 0.0350	 0.1730

