



Full wwPDB X-ray Structure Validation Report ⓘ

May 18, 2026 – 02:42 PM JST

PDB ID : 9V2T / pdb_00009v2t
Title : Crystal Structure of avermectin oxidase
Authors : Cheng, F.; Xue, Y.P.; Zheng, Y.G.; Yang, D.C.; Ma, Y.
Deposited on : 2025-05-20
Resolution : 3.15 Å(reported)

This is a Full wwPDB X-ray Structure Validation Report for a publicly released PDB entry.

We welcome your comments at validation@mail.wwpdb.org

A user guide is available at

<https://www.wwpdb.org/validation/2017/XrayValidationReportHelp>

with specific help available everywhere you see the ⓘ symbol.

The types of validation reports are described at

<http://www.wwpdb.org/validation/2017/FAQs#types>.

The following versions of software and data (see [references ⓘ](#)) were used in the production of this report:

MolProbity : 4-5-2 with Phenix2.0
Mogul : 1.8.5 (274361), CSD as541be (2020)
Xtriage (Phenix) : 2.0
EDS : 3.0
Buster-report : wwPDB partial adaption of 1.1.7 (2018)
Percentile statistics : 20250101.v01 (using entries in the PDB archive January 1st 2025)
CCP4 : 9.0.010 (Gargrove)
Density-Fitness : 1.0.12
Ideal geometry (proteins) : Engh & Huber (2001)
Ideal geometry (DNA, RNA) : Parkinson et al. (1996)
Validation Pipeline (wwPDB-VP) : 2.49

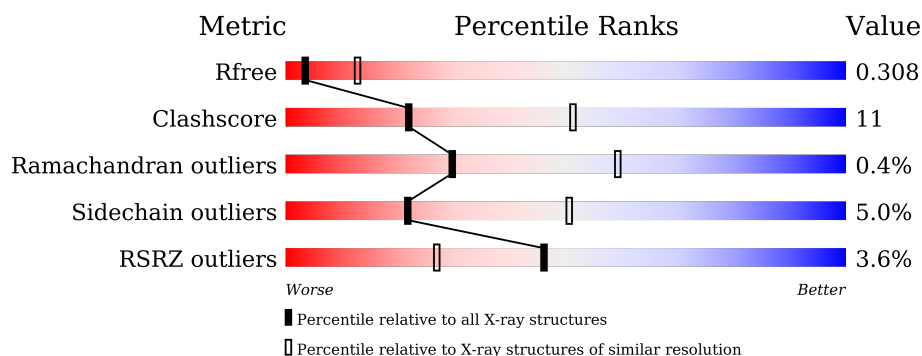
1 Overall quality at a glance

The following experimental techniques were used to determine the structure:

X-RAY DIFFRACTION

The reported resolution of this entry is 3.15 Å.

Percentile scores (ranging between 0-100) for global validation metrics of the entry are shown in the following graphic. The table shows the number of entries on which the scores are based.



Metric	Whole archive (#Entries)	Similar resolution (#Entries, resolution range(Å))
R_{free}	180053	2361 (3.20-3.12)
Clashscore	190562	2486 (3.20-3.12)
Ramachandran outliers	187476	2405 (3.20-3.12)
Sidechain outliers	187428	2404 (3.20-3.12)
RSRZ outliers	180081	2361 (3.20-3.12)

The table below summarises the geometric issues observed across the polymeric chains and their fit to the electron density. The red, orange, yellow and green segments of the lower bar indicate the fraction of residues that contain outliers for ≥ 3 , 2, 1 and 0 types of geometric quality criteria respectively. A grey segment represents the fraction of residues that are not modelled. The numeric value for each fraction is indicated below the corresponding segment, with a dot representing fractions $\leq 5\%$. The upper red bar (where present) indicates the fraction of residues that have poor fit to the electron density. The numeric value is given above the bar.

Mol	Chain	Length	Quality of chain
1	A	430	<div> <div>2%</div> <div> <div></div> <div>70%</div> <div>24%</div> <div>• •</div> </div> </div>
1	B	430	<div> <div>5%</div> <div> <div></div> <div>68%</div> <div>26%</div> <div>• •</div> </div> </div>

2 Entry composition [i](#)

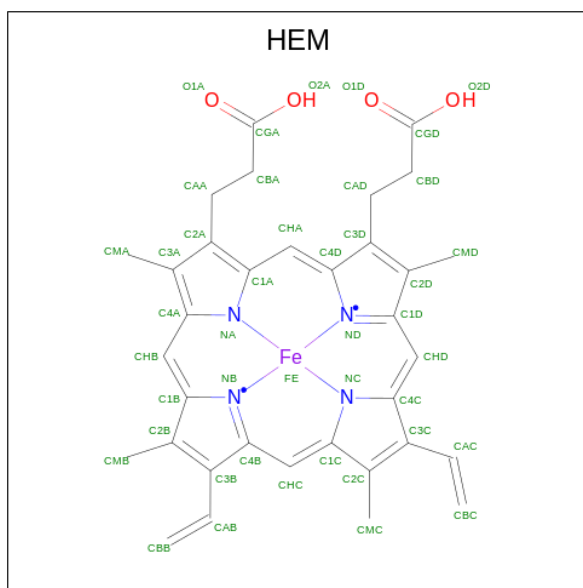
There are 2 unique types of molecules in this entry. The entry contains 6588 atoms, of which 0 are hydrogens and 0 are deuteriums.

In the tables below, the ZeroOcc column contains the number of atoms modelled with zero occupancy, the AltConf column contains the number of residues with at least one atom in alternate conformation and the Trace column contains the number of residues modelled with at most 2 atoms.

- Molecule 1 is a protein called Cytochrome P450 monooxygenase CYP107Z12.

Mol	Chain	Residues	Atoms					ZeroOcc	AltConf	Trace
1	A	412	Total	C	N	O	S	0	0	0
			3251	2048	592	597	14			
1	B	412	Total	C	N	O	S	0	0	0
			3251	2048	592	597	14			

- Molecule 2 is PROTOPORPHYRIN IX CONTAINING FE (CCD ID: HEM) (formula: $C_{34}H_{32}FeN_4O_4$) (labeled as "Ligand of Interest" by depositor).

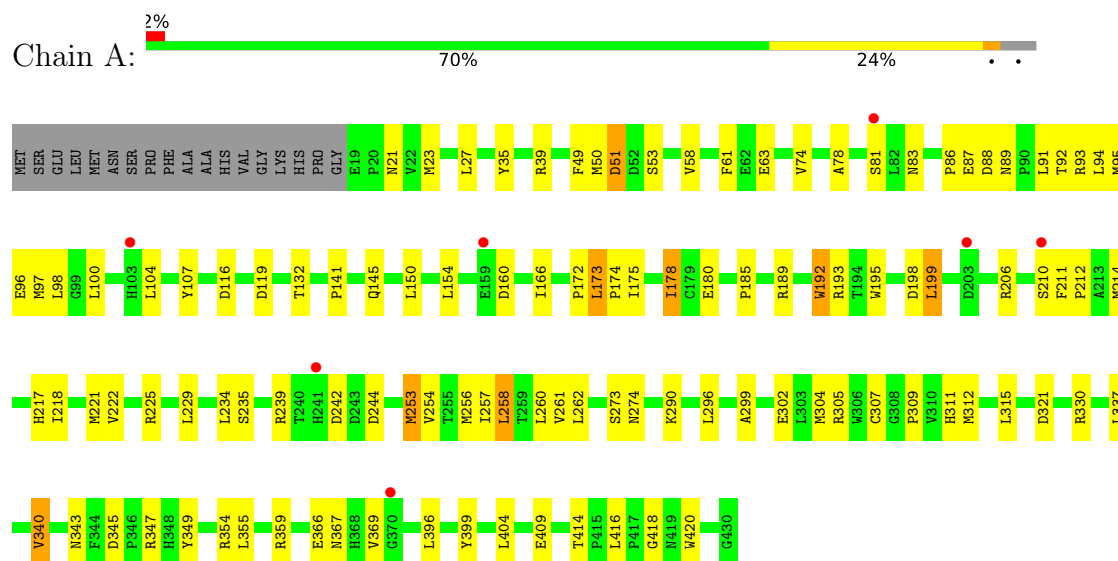


Mol	Chain	Residues	Atoms					ZeroOcc	AltConf
2	A	1	Total	C	Fe	N	O	0	0
			43	34	1	4	4		
2	B	1	Total	C	Fe	N	O	0	0
			43	34	1	4	4		

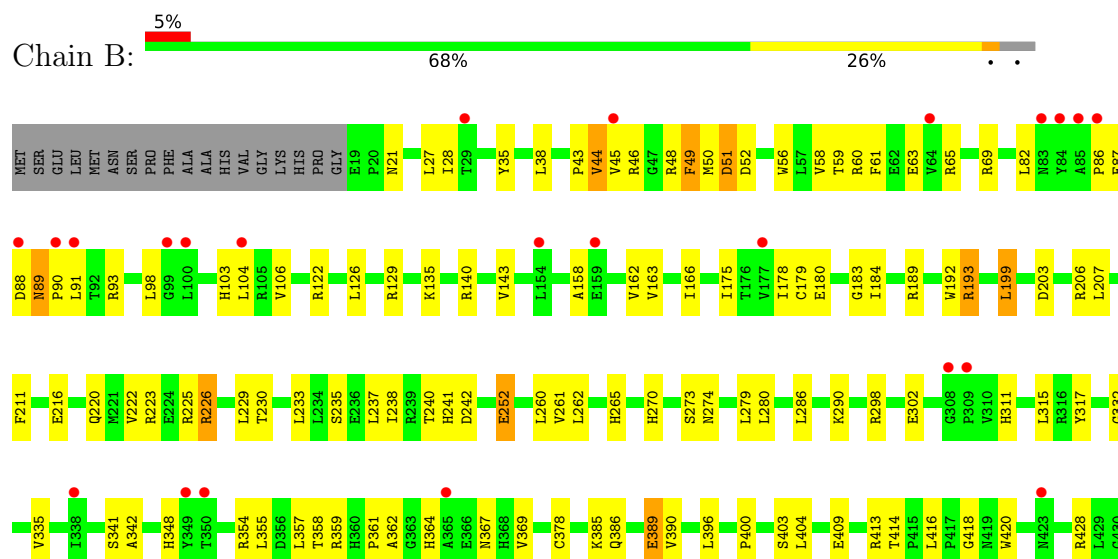
3 Residue-property plots [i](#)

These plots are drawn for all protein, RNA, DNA and oligosaccharide chains in the entry. The first graphic for a chain summarises the proportions of the various outlier classes displayed in the second graphic. The second graphic shows the sequence view annotated by issues in geometry and electron density. Residues are color-coded according to the number of geometric quality criteria for which they contain at least one outlier: green = 0, yellow = 1, orange = 2 and red = 3 or more. A red dot above a residue indicates a poor fit to the electron density ($RSRZ > 2$). Stretches of 2 or more consecutive residues without any outlier are shown as a green connector. Residues present in the sample, but not in the model, are shown in grey.

- Molecule 1: Cytochrome P450 monooxygenase CYP107Z12



- Molecule 1: Cytochrome P450 monooxygenase CYP107Z12



4 Data and refinement statistics

Property	Value	Source
Space group	C 1 2 1	Depositor
Cell constants a, b, c, α , β , γ	176.61Å 47.54Å 107.83Å 90.00° 99.82° 90.00°	Depositor
Resolution (Å)	42.25 – 3.15 42.25 – 3.15	Depositor EDS
% Data completeness (in resolution range)	98.9 (42.25-3.15) 96.2 (42.25-3.15)	Depositor EDS
R_{merge}	(Not available)	Depositor
R_{sym}	(Not available)	Depositor
$\langle I/\sigma(I) \rangle$ ¹	1.97 (at 3.12Å)	Xtriage
Refinement program	PHENIX 1.15.1 _3469	Depositor
R, R_{free}	0.253 , 0.308 0.255 , 0.308	Depositor DCC
R_{free} test set	780 reflections (4.98%)	wwPDB-VP
Wilson B-factor (Å ²)	56.1	Xtriage
Anisotropy	0.567	Xtriage
Bulk solvent k_{sol} (e/Å ³), B_{sol} (Å ²)	0.34 , 69.6	EDS
L-test for twinning ²	$\langle L \rangle = 0.41$, $\langle L^2 \rangle = 0.23$	Xtriage
Estimated twinning fraction	No twinning to report.	Xtriage
F_o, F_c correlation	0.86	EDS
Total number of atoms	6588	wwPDB-VP
Average B, all atoms (Å ²)	66.0	wwPDB-VP

Xtriage's analysis on translational NCS is as follows: *The largest off-origin peak in the Patterson function is 7.15% of the height of the origin peak. No significant pseudotranslation is detected.*

¹Intensities estimated from amplitudes.

²Theoretical values of $\langle |L| \rangle$, $\langle L^2 \rangle$ for acentric reflections are 0.5, 0.333 respectively for untwinned datasets, and 0.375, 0.2 for perfectly twinned datasets.

5 Model quality

5.1 Standard geometry

Bond lengths and bond angles in the following residue types are not validated in this section: HEM

The Z score for a bond length (or angle) is the number of standard deviations the observed value is removed from the expected value. A bond length (or angle) with $|Z| > 5$ is considered an outlier worth inspection. RMSZ is the root-mean-square of all Z scores of the bond lengths (or angles).

Mol	Chain	Bond lengths		Bond angles	
		RMSZ	# Z >5	RMSZ	# Z >5
1	A	0.13	0/3331	0.37	0/4544
1	B	0.13	0/3331	0.36	0/4544
All	All	0.13	0/6662	0.36	0/9088

There are no bond length outliers.

There are no bond angle outliers.

There are no chirality outliers.

There are no planarity outliers.

5.2 Too-close contacts

In the following table, the Non-H and H(model) columns list the number of non-hydrogen atoms and hydrogen atoms in the chain respectively. The H(added) column lists the number of hydrogen atoms added and optimized by MolProbity. The Clashes column lists the number of clashes within the asymmetric unit, whereas Symm-Clashes lists symmetry-related clashes.

Mol	Chain	Non-H	H(model)	H(added)	Clashes	Symm-Clashes
1	A	3251	0	3216	64	0
1	B	3251	0	3218	73	0
2	A	43	0	30	2	0
2	B	43	0	30	4	0
All	All	6588	0	6494	140	0

The all-atom clashscore is defined as the number of clashes found per 1000 atoms (including hydrogen atoms). The all-atom clashscore for this structure is 11.

All (140) close contacts within the same asymmetric unit are listed below, sorted by their clash magnitude.

Atom-1	Atom-2	Interatomic distance (Å)	Clash overlap (Å)
1:B:203:ASP:HB2	1:B:206:ARG:HB2	1.66	0.78
1:B:311:HIS:HB2	1:B:418:GLY:HA2	1.68	0.74
1:A:274:ASN:HB3	1:A:307:CYS:HB2	1.74	0.69
1:A:49:PHE:HB2	1:A:53:SER:HB2	1.73	0.69
1:B:86:PRO:O	1:B:88:ASP:N	2.27	0.67
1:A:78:ALA:HB2	1:A:89:ASN:HD21	1.61	0.65
1:A:345:ASP:OD1	1:A:347:ARG:NH1	2.30	0.64
1:B:180:GLU:HG2	1:B:189:ARG:HH22	1.62	0.64
1:B:298:ARG:HD2	1:B:362:ALA:HB2	1.79	0.64
1:A:222:VAL:HG22	1:A:234:LEU:HD11	1.78	0.64
1:A:104:LEU:HB3	1:A:211:PHE:HE2	1.63	0.63
1:B:354:ARG:O	1:B:359:ARG:NH2	2.33	0.61
1:B:166:ILE:HG12	1:B:273:SER:HB2	1.83	0.61
1:A:154:LEU:HD12	1:A:399:TYR:HE2	1.66	0.60
1:B:183:GLY:O	1:B:225:ARG:NH2	2.34	0.60
1:A:195:TRP:CD1	1:A:210:SER:HB3	2.37	0.59
2:B:501:HEM:HMB1	2:B:501:HEM:HBB2	1.83	0.59
1:B:140:ARG:NH1	1:B:389:GLU:OE2	2.36	0.59
1:B:403:SER:HB3	1:B:428:ARG:HB2	1.86	0.58
1:B:89:ASN:N	1:B:89:ASN:OD1	2.36	0.58
1:B:290:LYS:HG2	1:B:396:LEU:HD13	1.86	0.57
1:A:290:LYS:HG2	1:A:396:LEU:HD13	1.85	0.57
1:B:88:ASP:OD2	1:B:93:ARG:HB2	2.05	0.57
1:A:89:ASN:HB3	1:A:91:LEU:HD23	1.86	0.56
1:B:38:LEU:HB3	1:B:45:VAL:HG21	1.88	0.56
1:B:50:MET:C	1:B:52:ASP:H	2.12	0.56
1:A:296:LEU:HA	1:A:299:ALA:HB3	1.87	0.56
1:B:274:ASN:ND2	1:B:420:TRP:O	2.39	0.56
2:B:501:HEM:HBC2	2:B:501:HEM:HMC2	1.87	0.56
2:A:501:HEM:HMC2	2:A:501:HEM:HBC2	1.89	0.55
1:A:305:ARG:NH1	1:A:343:ASN:O	2.39	0.55
1:B:192:TRP:HZ3	1:B:261:VAL:HG21	1.72	0.55
1:B:179:CYS:HA	1:B:184:ILE:HD12	1.90	0.54
1:A:304:MET:HE1	1:A:309:PRO:HD2	1.90	0.54
1:B:290:LYS:NZ	1:B:400:PRO:O	2.28	0.54
1:A:198:ASP:HA	1:A:206:ARG:HB3	1.90	0.53
1:B:216:GLU:OE1	1:B:223:ARG:NH2	2.34	0.53
1:B:414:THR:HG22	1:B:416:LEU:HG	1.91	0.53
1:A:211:PHE:HA	1:A:214:MET:HE3	1.91	0.52
1:B:49:PHE:C	1:B:51:ASP:H	2.17	0.52
1:B:143:VAL:HG12	1:B:390:VAL:HG11	1.92	0.52
1:B:226:ARG:HG2	1:B:238:ILE:HD13	1.92	0.51

Continued on next page...

Continued from previous page...

Atom-1	Atom-2	Interatomic distance (Å)	Clash overlap (Å)
1:B:90:PRO:HG2	1:B:317:TYR:OH	2.11	0.51
1:B:203:ASP:O	1:B:207:LEU:N	2.24	0.50
1:A:107:TYR:HB3	1:A:258:LEU:HD22	1.92	0.50
1:B:348:HIS:NE2	1:B:367:ASN:OD1	2.41	0.50
1:A:312:MET:HG3	1:A:418:GLY:HA2	1.93	0.50
1:B:44:VAL:HG13	1:B:58:VAL:HG22	1.93	0.50
1:A:414:THR:HG22	1:A:416:LEU:HG	1.93	0.49
1:B:63:GLU:N	1:B:63:GLU:OE2	2.45	0.49
1:B:207:LEU:O	1:B:211:PHE:HB3	2.12	0.49
1:B:279:LEU:HB3	1:B:286:LEU:HB2	1.95	0.49
1:B:302:GLU:HB3	1:B:357:LEU:HD23	1.95	0.49
1:A:92:THR:O	1:A:96:GLU:HG2	2.13	0.49
1:A:192:TRP:HE1	1:A:217:HIS:CE1	2.32	0.48
1:B:241:HIS:ND1	1:B:242:ASP:O	2.46	0.48
1:B:189:ARG:O	1:B:193:ARG:HG2	2.14	0.48
1:B:98:LEU:HD13	1:B:207:LEU:HD13	1.95	0.48
1:A:58:VAL:HB	1:A:337:LEU:HD23	1.95	0.48
1:B:409:GLU:H	1:B:409:GLU:CD	2.21	0.48
1:B:199:LEU:HD13	1:B:262:LEU:HD21	1.95	0.47
1:B:122:ARG:NH2	1:B:252:GLU:OE2	2.38	0.47
1:B:385:LYS:O	1:B:389:GLU:HG3	2.15	0.47
1:B:56:TRP:HB2	1:B:335:VAL:HG22	1.97	0.47
1:B:175:ILE:HB	1:B:265:HIS:CD2	2.50	0.47
1:A:253:MET:O	1:A:257:ILE:HG12	2.15	0.47
1:B:158:ALA:HA	1:B:163:VAL:HB	1.97	0.47
1:B:274:ASN:ND2	1:B:413:ARG:HH12	2.13	0.47
2:A:501:HEM:HBB2	2:A:501:HEM:HMB2	1.96	0.47
1:A:91:LEU:O	1:A:95:MET:HG2	2.15	0.46
1:B:43:PRO:HB3	1:B:60:ARG:HD2	1.96	0.46
1:A:23:MET:HG3	1:A:50:MET:HB2	1.97	0.46
1:A:199:LEU:HD13	1:A:262:LEU:HD21	1.96	0.46
1:B:222:VAL:O	1:B:226:ARG:HG3	2.16	0.46
1:A:132:THR:HB	1:B:135:LYS:HE3	1.97	0.46
1:A:150:LEU:HD11	1:A:172:PRO:HB2	1.97	0.46
1:A:63:GLU:N	1:A:63:GLU:OE2	2.49	0.46
1:B:103:HIS:O	1:B:104:LEU:HB2	2.17	0.45
1:A:175:ILE:HG23	1:A:193:ARG:HH11	1.80	0.45
1:B:302:GLU:HG3	1:B:355:LEU:HD12	1.98	0.45
1:A:180:GLU:HG2	1:A:189:ARG:HH22	1.81	0.45
1:B:59:THR:O	1:B:341:SER:OG	2.31	0.45
1:A:35:TYR:O	1:A:39:ARG:N	2.49	0.45

Continued on next page...

Continued from previous page...

Atom-1	Atom-2	Interatomic distance (Å)	Clash overlap (Å)
1:A:321:ASP:OD2	1:A:330:ARG:HD3	2.16	0.45
1:B:280:LEU:HB3	1:B:404:LEU:HG	1.99	0.45
1:B:82:LEU:HD22	1:B:332:GLY:HA2	1.99	0.45
1:B:126:LEU:HD22	1:B:240:THR:HG22	1.98	0.44
1:B:361:PRO:HB2	1:B:364:HIS:CE1	2.52	0.44
1:B:286:LEU:O	1:B:290:LYS:HG3	2.17	0.44
1:A:173:LEU:HB3	1:A:174:PRO:HD3	2.00	0.44
1:A:86:PRO:O	1:A:88:ASP:N	2.50	0.44
1:A:104:LEU:HD23	1:A:107:TYR:CE2	2.53	0.44
1:A:49:PHE:C	1:A:51:ASP:H	2.25	0.44
1:A:311:HIS:NE2	1:A:420:TRP:HB2	2.32	0.44
1:A:93:ARG:O	1:A:97:MET:N	2.45	0.44
1:A:302:GLU:HG3	1:A:355:LEU:HD12	1.98	0.44
1:B:46:ARG:HG3	1:B:56:TRP:CZ3	2.53	0.44
1:A:349:TYR:OH	1:A:367:ASN:O	2.33	0.44
1:A:185:PRO:O	1:A:189:ARG:HG3	2.18	0.43
1:B:129:ARG:HH12	1:B:242:ASP:HA	1.83	0.43
1:A:235:SER:O	1:A:239:ARG:HG3	2.19	0.43
1:B:233:LEU:O	1:B:237:LEU:HG	2.18	0.43
1:A:214:MET:O	1:A:218:ILE:HG13	2.18	0.43
1:A:256:MET:O	1:A:260:LEU:HG	2.17	0.43
1:B:21:ASN:HA	1:B:48:ARG:O	2.17	0.43
1:B:27:LEU:HD13	1:B:35:TYR:CZ	2.54	0.43
1:A:74:VAL:HB	1:A:116:ASP:OD2	2.19	0.42
1:B:389:GLU:HG3	1:B:389:GLU:H	1.59	0.42
1:B:270:HIS:HA	1:B:273:SER:HB3	2.01	0.42
1:A:218:ILE:HG22	1:A:254:VAL:HG22	2.01	0.42
1:A:354:ARG:O	1:A:359:ARG:NH2	2.52	0.42
1:B:65:ARG:O	1:B:69:ARG:HG2	2.19	0.42
1:A:195:TRP:CG	1:A:214:MET:HB2	2.54	0.42
1:B:61:PHE:HA	1:B:342:ALA:HB1	2.02	0.42
1:B:220:GLN:OE1	1:B:223:ARG:NH2	2.42	0.42
1:B:180:GLU:HG3	1:B:189:ARG:HH12	1.85	0.42
1:B:260:LEU:HD22	2:B:501:HEM:HAC	2.02	0.42
1:A:211:PHE:CE1	1:A:258:LEU:HD21	2.55	0.42
1:A:225:ARG:HG3	1:A:234:LEU:HG	2.02	0.42
1:A:296:LEU:HA	1:A:296:LEU:HD23	1.90	0.42
1:B:49:PHE:CE1	1:B:315:LEU:HD11	2.55	0.41
1:A:141:PRO:O	1:A:145:GLN:HG3	2.20	0.41
1:A:221:MET:O	1:A:225:ARG:HG2	2.21	0.41
1:A:49:PHE:CE2	1:A:315:LEU:HD11	2.55	0.41

Continued on next page...

Continued from previous page...

Atom-1	Atom-2	Interatomic distance (Å)	Clash overlap (Å)
1:A:94:LEU:O	1:A:98:LEU:HG	2.21	0.41
1:A:242:ASP:HB3	1:A:244:ASP:OD1	2.21	0.41
1:A:211:PHE:N	1:A:212:PRO:HD2	2.35	0.41
1:B:50:MET:HB3	1:B:50:MET:HE2	1.86	0.41
1:B:378:CYS:HA	2:B:501:HEM:C4D	2.56	0.41
1:A:166:ILE:HG12	1:A:273:SER:HB2	2.02	0.41
1:A:211:PHE:HE1	1:A:258:LEU:HD21	1.85	0.41
1:A:311:HIS:ND1	1:A:340:VAL:HB	2.35	0.41
1:A:257:ILE:O	1:A:261:VAL:HG23	2.21	0.41
1:B:126:LEU:O	1:B:240:THR:HG21	2.21	0.41
1:A:21:ASN:O	1:A:27:LEU:HD12	2.20	0.40
1:B:50:MET:C	1:B:52:ASP:N	2.78	0.40
1:B:175:ILE:HB	1:B:265:HIS:NE2	2.36	0.40
1:B:229:LEU:HD22	1:B:235:SER:HB3	2.03	0.40
1:A:178:ILE:HD12	1:A:178:ILE:HA	1.64	0.40
1:A:225:ARG:O	1:A:229:LEU:HD23	2.21	0.40

There are no symmetry-related clashes.

5.3 Torsion angles [i](#)

5.3.1 Protein backbone [i](#)

In the following table, the Percentiles column shows the percent Ramachandran outliers of the chain as a percentile score with respect to all X-ray entries followed by that with respect to entries of similar resolution.

The Analysed column shows the number of residues for which the backbone conformation was analysed, and the total number of residues.

Mol	Chain	Analysed	Favoured	Allowed	Outliers	Percentiles	
1	A	410/430 (95%)	384 (94%)	24 (6%)	2 (0%)	24	55
1	B	410/430 (95%)	378 (92%)	31 (8%)	1 (0%)	43	71
All	All	820/860 (95%)	762 (93%)	55 (7%)	3 (0%)	30	59

All (3) Ramachandran outliers are listed below:

Mol	Chain	Res	Type
1	A	87	GLU
1	B	87	GLU

Continued on next page...

Continued from previous page...

Mol	Chain	Res	Type
1	A	61	PHE

5.3.2 Protein sidechains ⓘ

In the following table, the Percentiles column shows the percent sidechain outliers of the chain as a percentile score with respect to all X-ray entries followed by that with respect to entries of similar resolution.

The Analysed column shows the number of residues for which the sidechain conformation was analysed, and the total number of residues.

Mol	Chain	Analysed	Rotameric	Outliers	Percentiles	
1	A	350/364 (96%)	333 (95%)	17 (5%)	22	51
1	B	350/364 (96%)	332 (95%)	18 (5%)	21	50
All	All	700/728 (96%)	665 (95%)	35 (5%)	22	50

All (35) residues with a non-rotameric sidechain are listed below:

Mol	Chain	Res	Type
1	A	51	ASP
1	A	81	SER
1	A	83	ASN
1	A	100	LEU
1	A	119	ASP
1	A	160	ASP
1	A	173	LEU
1	A	178	ILE
1	A	192	TRP
1	A	199	LEU
1	A	253	MET
1	A	258	LEU
1	A	340	VAL
1	A	366	GLU
1	A	369	VAL
1	A	404	LEU
1	A	409	GLU
1	B	28	ILE
1	B	44	VAL
1	B	49	PHE
1	B	51	ASP
1	B	89	ASN

Continued on next page...

Continued from previous page...

Mol	Chain	Res	Type
1	B	91	LEU
1	B	106	VAL
1	B	162	VAL
1	B	178	ILE
1	B	193	ARG
1	B	199	LEU
1	B	226	ARG
1	B	230	THR
1	B	252	GLU
1	B	358	THR
1	B	369	VAL
1	B	386	GLN
1	B	389	GLU

Sometimes sidechains can be flipped to improve hydrogen bonding and reduce clashes. All (10) such sidechains are listed below:

Mol	Chain	Res	Type
1	A	89	ASN
1	A	103	HIS
1	A	145	GLN
1	A	168	HIS
1	A	376	HIS
1	A	419	ASN
1	B	191	GLN
1	B	265	HIS
1	B	336	GLN
1	B	398	HIS

5.3.3 RNA [i](#)

There are no RNA molecules in this entry.

5.4 Non-standard residues in protein, DNA, RNA chains [i](#)

There are no non-standard protein/DNA/RNA residues in this entry.

5.5 Carbohydrates [i](#)

There are no oligosaccharides in this entry.

5.6 Ligand geometry

2 ligands are modelled in this entry.

In the following table, the Counts columns list the number of bonds (or angles) for which Mogul statistics could be retrieved, the number of bonds (or angles) that are observed in the model and the number of bonds (or angles) that are defined in the Chemical Component Dictionary. The Link column lists molecule types, if any, to which the group is linked. The Z score for a bond length (or angle) is the number of standard deviations the observed value is removed from the expected value. A bond length (or angle) with $|Z| > 2$ is considered an outlier worth inspection. RMSZ is the root-mean-square of all Z scores of the bond lengths (or angles).

Mol	Type	Chain	Res	Link	Bond lengths			Bond angles		
					Counts	RMSZ	# Z > 2	Counts	RMSZ	# Z > 2
2	HEM	B	501	-	50,50,50	1.48	8 (16%)	66,82,82	1.27	9 (13%)
2	HEM	A	501	-	50,50,50	1.42	10 (20%)	66,82,82	1.35	10 (15%)

In the following table, the Chirals column lists the number of chiral outliers, the number of chiral centers analysed, the number of these observed in the model and the number defined in the Chemical Component Dictionary. Similar counts are reported in the Torsion and Rings columns. '-' means no outliers of that kind were identified.

Mol	Type	Chain	Res	Link	Chirals	Torsions	Rings
2	HEM	B	501	-	-	2/14/54/54	-
2	HEM	A	501	-	-	2/14/54/54	-

All (18) bond length outliers are listed below:

Mol	Chain	Res	Type	Atoms	Z	Observed(Å)	Ideal(Å)
2	B	501	HEM	FE-ND	3.74	2.06	1.94
2	B	501	HEM	FE-NA	3.70	2.07	1.95
2	B	501	HEM	FE-NC	3.52	2.07	1.95
2	A	501	HEM	FE-NB	3.39	2.05	1.94
2	B	501	HEM	FE-NB	3.33	2.05	1.94
2	A	501	HEM	CAC-C3C	3.13	1.56	1.47
2	A	501	HEM	FE-NA	3.10	2.05	1.95
2	A	501	HEM	FE-NC	3.07	2.05	1.95
2	B	501	HEM	CAC-C3C	3.06	1.55	1.47
2	A	501	HEM	CAB-C3B	3.02	1.55	1.47
2	B	501	HEM	CAB-C3B	2.99	1.55	1.47
2	A	501	HEM	FE-ND	2.79	2.03	1.94
2	A	501	HEM	O2D-CGD	-2.14	1.23	1.30
2	B	501	HEM	CMB-C2B	2.07	1.55	1.50
2	A	501	HEM	CMC-C2C	2.04	1.55	1.50

Continued on next page...

Continued from previous page...

Mol	Chain	Res	Type	Atoms	Z	Observed(Å)	Ideal(Å)
2	B	501	HEM	CMC-C2C	2.03	1.55	1.50
2	A	501	HEM	CMB-C2B	2.02	1.55	1.50
2	A	501	HEM	CMD-C2D	2.01	1.55	1.50

All (19) bond angle outliers are listed below:

Mol	Chain	Res	Type	Atoms	Z	Observed(°)	Ideal(°)
2	A	501	HEM	CBD-CAD-C3D	-3.36	103.28	112.63
2	A	501	HEM	C4D-ND-C1D	3.18	108.36	105.07
2	B	501	HEM	C4A-NA-C1A	2.92	108.20	105.35
2	B	501	HEM	C1B-NB-C4B	2.85	108.02	105.07
2	B	501	HEM	C4D-ND-C1D	2.85	108.02	105.07
2	A	501	HEM	C4A-NA-C1A	2.81	108.10	105.35
2	A	501	HEM	O2D-CGD-O1D	-2.75	116.44	123.30
2	A	501	HEM	C3D-C4D-ND	-2.75	107.10	110.17
2	A	501	HEM	C1B-NB-C4B	2.67	107.83	105.07
2	A	501	HEM	C4C-NC-C1C	2.58	107.88	105.35
2	B	501	HEM	CAA-CBA-CGA	-2.53	108.16	113.60
2	B	501	HEM	C3D-C4D-ND	-2.40	107.49	110.17
2	B	501	HEM	C4C-NC-C1C	2.38	107.68	105.35
2	B	501	HEM	C2A-C1A-NA	-2.18	107.70	110.15
2	A	501	HEM	CMB-C2B-C1B	-2.18	121.72	125.04
2	A	501	HEM	C3B-C2B-C1B	2.17	108.10	106.49
2	A	501	HEM	C2A-C1A-NA	-2.13	107.77	110.15
2	B	501	HEM	C3B-C2B-C1B	2.09	108.03	106.49
2	B	501	HEM	CHD-C1D-ND	2.01	126.61	124.42

There are no chirality outliers.

All (4) torsion outliers are listed below:

Mol	Chain	Res	Type	Atoms
2	B	501	HEM	CAA-CBA-CGA-O2A
2	B	501	HEM	CAA-CBA-CGA-O1A
2	A	501	HEM	CAA-CBA-CGA-O2A
2	A	501	HEM	CAA-CBA-CGA-O1A

There are no ring outliers.

2 monomers are involved in 6 short contacts:

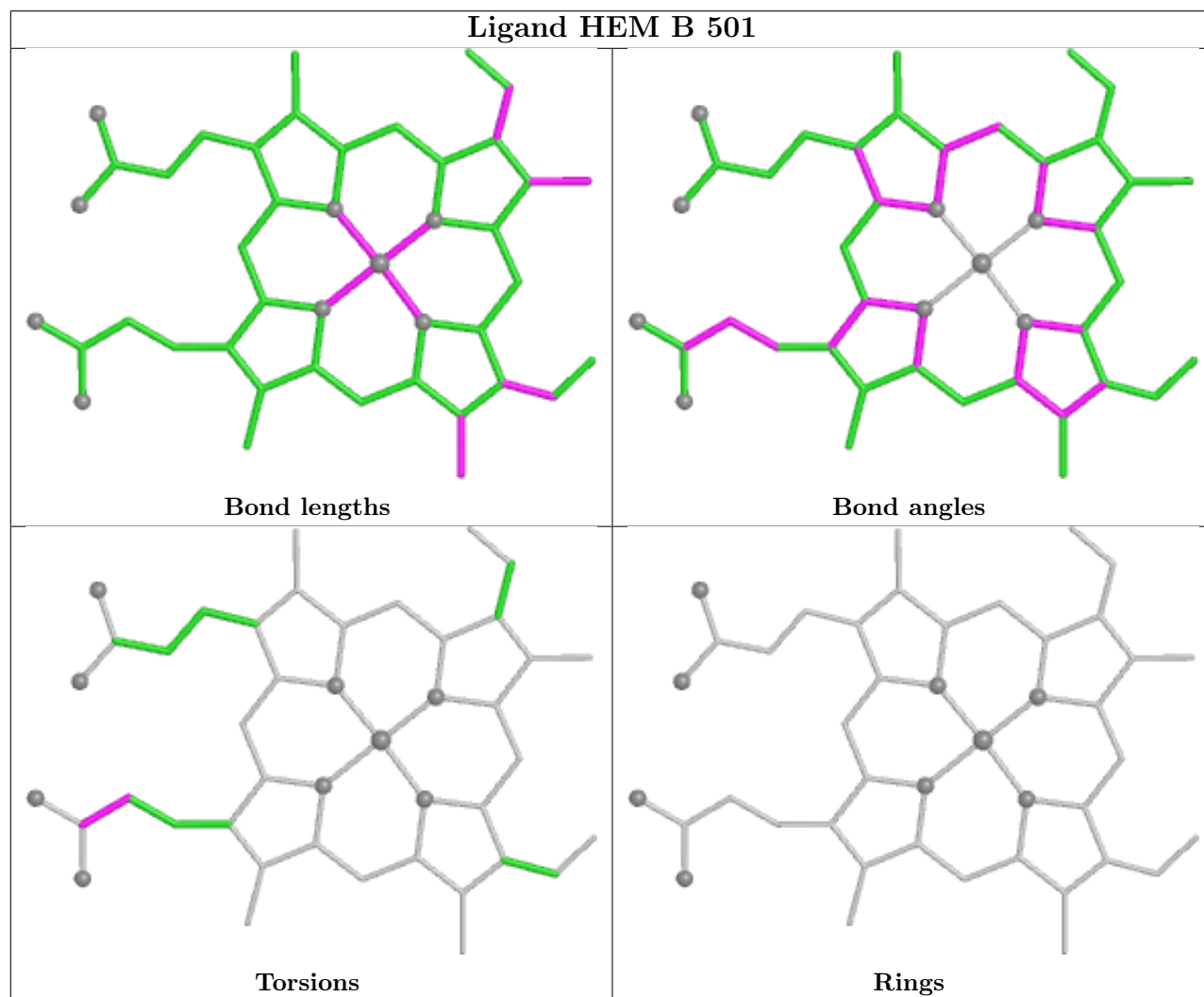
Mol	Chain	Res	Type	Clashes	Symm-Clashes
2	B	501	HEM	4	0

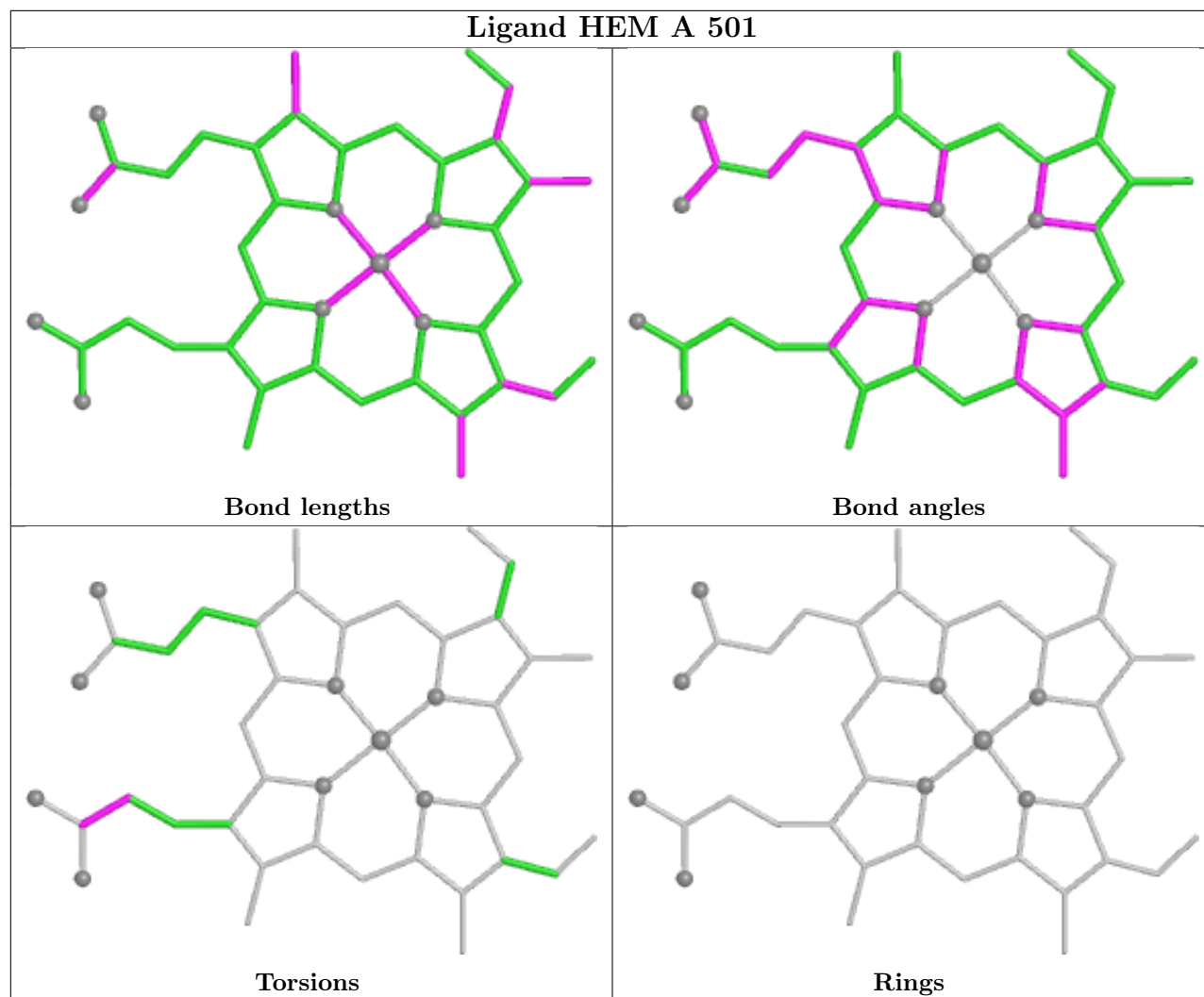
Continued on next page...

Continued from previous page...

Mol	Chain	Res	Type	Clashes	Symm-Clashes
2	A	501	HEM	2	0

The following is a two-dimensional graphical depiction of Mogul quality analysis of bond lengths, bond angles, torsion angles, and ring geometry for all instances of the Ligand of Interest. In addition, ligands with molecular weight > 250 and outliers as shown on the validation Tables will also be included. For torsion angles, if less than 5% of the Mogul distribution of torsion angles is within 10 degrees of the torsion angle in question, then that torsion angle is considered an outlier. Any bond that is central to one or more torsion angles identified as an outlier by Mogul will be highlighted in the graph. For rings, the root-mean-square deviation (RMSD) between the ring in question and similar rings identified by Mogul is calculated over all ring torsion angles. If the average RMSD is greater than 60 degrees and the minimal RMSD between the ring in question and any Mogul-identified rings is also greater than 60 degrees, then that ring is considered an outlier. The outliers are highlighted in purple. The color gray indicates Mogul did not find sufficient equivalents in the CSD to analyse the geometry.





5.7 Other polymers [i](#)

There are no such residues in this entry.

5.8 Polymer linkage issues [i](#)

There are no chain breaks in this entry.

6 Fit of model and data

6.1 Protein, DNA and RNA chains

In the following table, the column labelled ‘#RSRZ > 2’ contains the number (and percentage) of RSRZ outliers, followed by percent RSRZ outliers for the chain as percentile scores relative to all X-ray entries and entries of similar resolution. The OWAB column contains the minimum, median, 95th percentile and maximum values of the occupancy-weighted average B-factor per residue. The column labelled ‘Q < 0.9’ lists the number of (and percentage) of residues with an average occupancy less than 0.9.

Mol	Chain	Analysed	<RSRZ>	#RSRZ>2	OWAB(Å ²)	Q<0.9
1	A	412/430 (95%)	0.26	7 (1%) 69 48	20, 51, 89, 117	0
1	B	412/430 (95%)	0.63	23 (5%) 30 17	31, 77, 129, 165	0
All	All	824/860 (95%)	0.44	30 (3%) 46 27	20, 63, 120, 165	0

All (30) RSRZ outliers are listed below:

Mol	Chain	Res	Type	RSRZ
1	B	85	ALA	4.6
1	B	99	GLY	3.5
1	B	349	TYR	3.1
1	B	29	THR	3.1
1	B	100	LEU	3.1
1	B	350	THR	3.0
1	B	104	LEU	2.9
1	A	81	SER	2.9
1	B	86	PRO	2.9
1	B	159	GLU	2.9
1	B	83	ASN	2.9
1	A	370	GLY	2.8
1	B	88	ASP	2.8
1	B	91	LEU	2.6
1	B	309	PRO	2.5
1	B	338	ILE	2.5
1	A	103	HIS	2.5
1	B	308	GLY	2.5
1	A	210	SER	2.5
1	B	365	ALA	2.4
1	B	45	VAL	2.4
1	B	84	TYR	2.4
1	B	423	ASN	2.3
1	A	241	HIS	2.3

Continued on next page...

Continued from previous page...

Mol	Chain	Res	Type	RSRZ
1	A	159	GLU	2.2
1	B	154	LEU	2.1
1	B	177	VAL	2.1
1	B	64	VAL	2.1
1	A	203	ASP	2.0
1	B	90	PRO	2.0

6.2 Non-standard residues in protein, DNA, RNA chains [i](#)

There are no non-standard protein/DNA/RNA residues in this entry.

6.3 Carbohydrates [i](#)

There are no oligosaccharides in this entry.

6.4 Ligands [i](#)

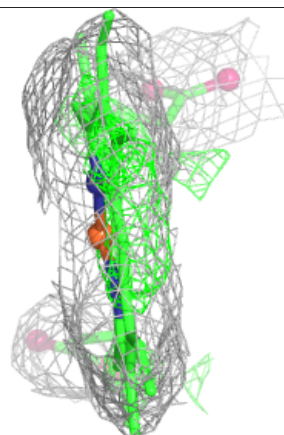
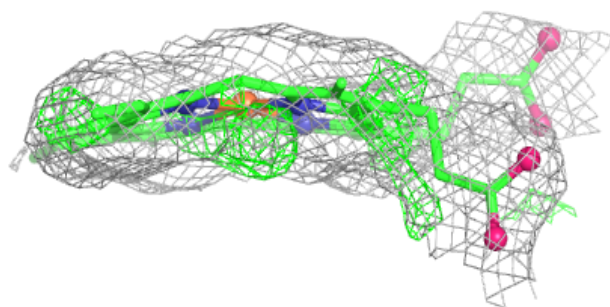
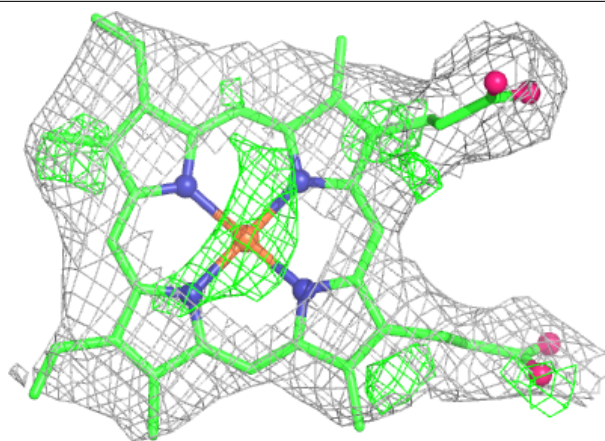
In the following table, the Atoms column lists the number of modelled atoms in the group and the number defined in the chemical component dictionary. The B-factors column lists the minimum, median, 95th percentile and maximum values of B factors of atoms in the group. The column labelled 'Q< 0.9' lists the number of atoms with occupancy less than 0.9.

Mol	Type	Chain	Res	Atoms	RSCC	RSR	B-factors(\AA^2)	Q<0.9
2	HEM	A	501	43/43	0.93	0.19	40,76,90,93	0
2	HEM	B	501	43/43	0.94	0.11	50,53,57,59	0

The following is a graphical depiction of the model fit to experimental electron density of all instances of the Ligand of Interest. In addition, ligands with molecular weight > 250 and outliers as shown on the geometry validation Tables will also be included. Each fit is shown from different orientation to approximate a three-dimensional view.

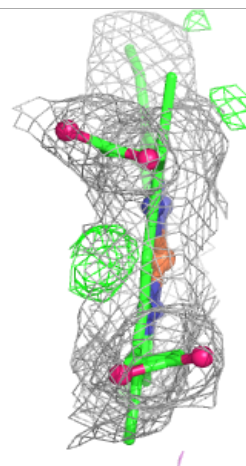
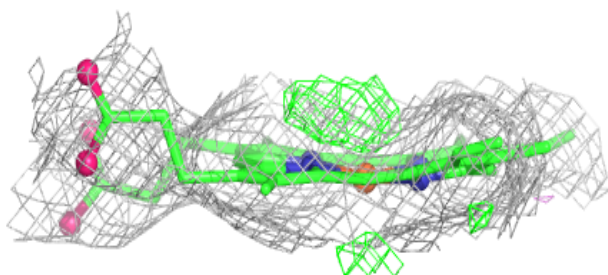
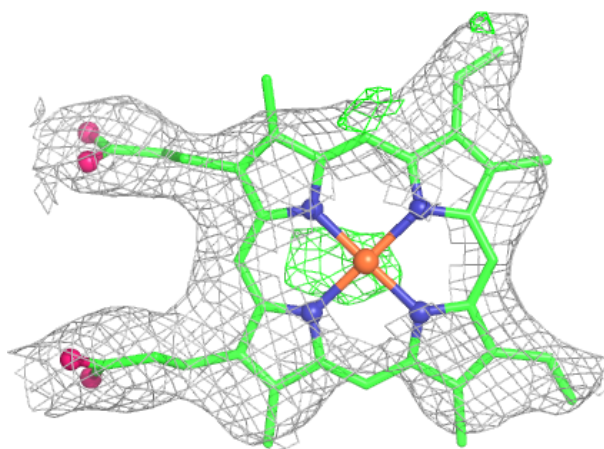
Electron density around HEM A 501:

$2mF_o-DF_c$ (at 0.7 rmsd) in gray
 mF_o-DF_c (at 3 rmsd) in purple (negative)
and green (positive)



Electron density around HEM B 501:

$2mF_o-DF_c$ (at 0.7 rmsd) in gray
 mF_o-DF_c (at 3 rmsd) in purple (negative)
and green (positive)



6.5 Other polymers [i](#)

There are no such residues in this entry.