



# Full wwPDB X-ray Structure Validation Report ⓘ

May 28, 2026 – 01:30 pm BST

PDB ID : 9R9R / pdb\_00009r9r  
Title : [FeFe]-hydrogenase from Nitratidesulfovibrio vulgaris str. Hildenborough at pH 5.21  
Authors : Bikbaev, K.; Span, I.  
Deposited on : 2025-05-20  
Resolution : 1.58 Å(reported)

This is a Full wwPDB X-ray Structure Validation Report for a publicly released PDB entry.

We welcome your comments at [validation@mail.wwpdb.org](mailto:validation@mail.wwpdb.org)

A user guide is available at

<https://www.wwpdb.org/validation/2017/XrayValidationReportHelp>

with specific help available everywhere you see the ⓘ symbol.

The types of validation reports are described at

<http://www.wwpdb.org/validation/2017/FAQs#types>.

---

The following versions of software and data (see [references ⓘ](#)) were used in the production of this report:

MolProbity	:	4-5-2 with Phenix2.0
Mogul	:	1.8.4, CSD as541be (2020)
Xtriage (Phenix)	:	2.0
EDS	:	3.0
Buster-report	:	wwPDB partial adaption of 1.1.7 (2018)
Percentile statistics	:	20250101.v01 (using entries in the PDB archive January 1st 2025)
CCP4	:	9.0.010 (Gargrove)
Density-Fitness	:	1.0.12
Ideal geometry (proteins)	:	Engh & Huber (2001)
Ideal geometry (DNA, RNA)	:	Parkinson et al. (1996)
Validation Pipeline (wwPDB-VP)	:	2.49

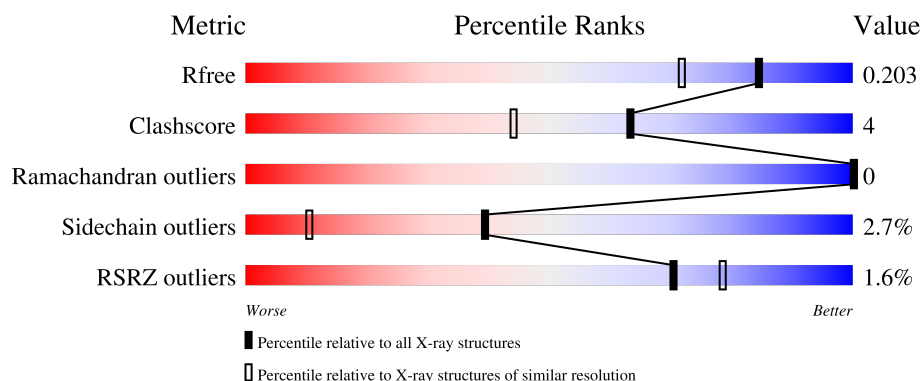
# 1 Overall quality at a glance

The following experimental techniques were used to determine the structure:

*X-RAY DIFFRACTION*

The reported resolution of this entry is 1.58 Å.

Percentile scores (ranging between 0-100) for global validation metrics of the entry are shown in the following graphic. The table shows the number of entries on which the scores are based.



Metric	Whole archive (#Entries)	Similar resolution (#Entries, resolution range(Å))
$R_{free}$	180053	1094 (1.58-1.58)
Clashscore	190562	1105 (1.58-1.58)
Ramachandran outliers	187476	1082 (1.58-1.58)
Sidechain outliers	187428	1081 (1.58-1.58)
RSRZ outliers	180081	1094 (1.58-1.58)

The table below summarises the geometric issues observed across the polymeric chains and their fit to the electron density. The red, orange, yellow and green segments of the lower bar indicate the fraction of residues that contain outliers for  $\geq 3$ , 2, 1 and 0 types of geometric quality criteria respectively. A grey segment represents the fraction of residues that are not modelled. The numeric value for each fraction is indicated below the corresponding segment, with a dot representing fractions  $\leq 5\%$ . The upper red bar (where present) indicates the fraction of residues that have poor fit to the electron density. The numeric value is given above the bar.

Mol	Chain	Length	Quality of chain
1	A	405	<div> <div style="width: 100%; height: 10px; background: linear-gradient(to right, red, orange, yellow, green, grey);"></div> <div style="display: flex; justify-content: space-between; margin-top: 5px;"> <span>%</span> <span>83%</span> <span>13%</span> <span>...</span> </div> </div>
2	B	88	<div> <div style="width: 100%; height: 10px; background: linear-gradient(to right, red, orange, yellow, green, grey);"></div> <div style="display: flex; justify-content: space-between; margin-top: 5px;"> <span>3%</span> <span>88%</span> <span>9%</span> <span>..</span> </div> </div>

## 2 Entry composition

There are 7 unique types of molecules in this entry. The entry contains 7818 atoms, of which 3811 are hydrogens and 0 are deuteriums.

In the tables below, the ZeroOcc column contains the number of atoms modelled with zero occupancy, the AltConf column contains the number of residues with at least one atom in alternate conformation and the Trace column contains the number of residues modelled with at most 2 atoms.

- Molecule 1 is a protein called Periplasmic [Fe] hydrogenase large subunit.

Mol	Chain	Residues	Atoms						ZeroOcc	AltConf	Trace
1	A	400	Total	C	H	N	O	S	238	5	0
			6114	1951	3041	512	575	35			

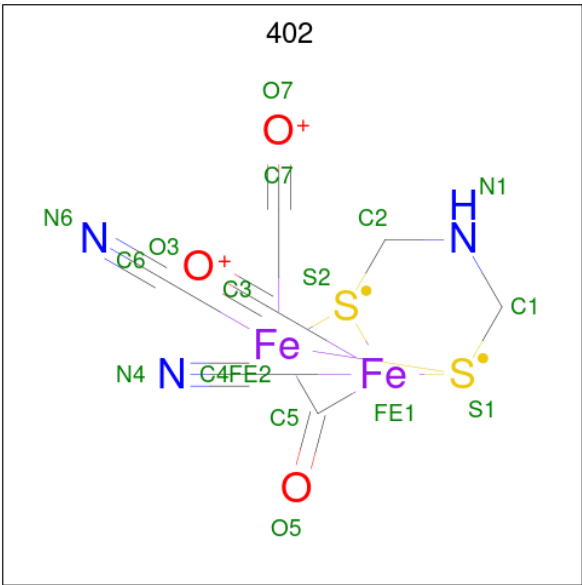
There are 8 discrepancies between the modelled and reference sequences:

Chain	Residue	Modelled	Actual	Comment	Reference
A	398	TRP	-	expression tag	UNP P07598
A	399	SER	-	expression tag	UNP P07598
A	400	HIS	-	expression tag	UNP P07598
A	401	PRO	-	expression tag	UNP P07598
A	402	GLN	-	expression tag	UNP P07598
A	403	PHE	-	expression tag	UNP P07598
A	404	GLU	-	expression tag	UNP P07598
A	405	LYS	-	expression tag	UNP P07598

- Molecule 2 is a protein called Periplasmic [Fe] hydrogenase small subunit.

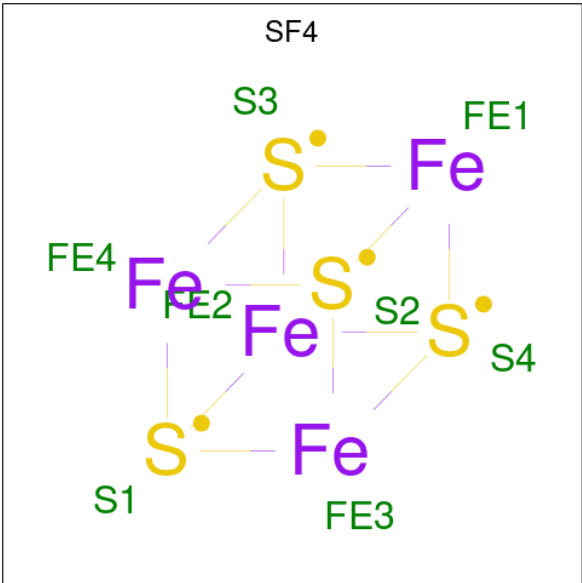
Mol	Chain	Residues	Atoms						ZeroOcc	AltConf	Trace
2	B	88	Total	C	H	N	O	S	50	3	0
			1451	466	727	124	133	1			

- Molecule 3 is dicarbonyl[bis(cyanide-kappaC)]-mu-(iminodimethanethiolatato-1kappaS:2kappaS)-mu-(oxomethylidene)diiron(2+) (CCD ID: 402) (formula: C<sub>7</sub>H<sub>5</sub>Fe<sub>2</sub>N<sub>3</sub>O<sub>3</sub>S<sub>2</sub>) (labeled as "Ligand of Interest" by depositor).



Mol	Chain	Residues	Atoms							ZeroOcc	AltConf
			Total	C	Fe	H	N	O	S		
3	A	1	24	7	2	7	3	3	2	1	0

- Molecule 4 is IRON/SULFUR CLUSTER (CCD ID: SF4) (formula: Fe<sub>4</sub>S<sub>4</sub>) (labeled as "Ligand of Interest" by depositor).



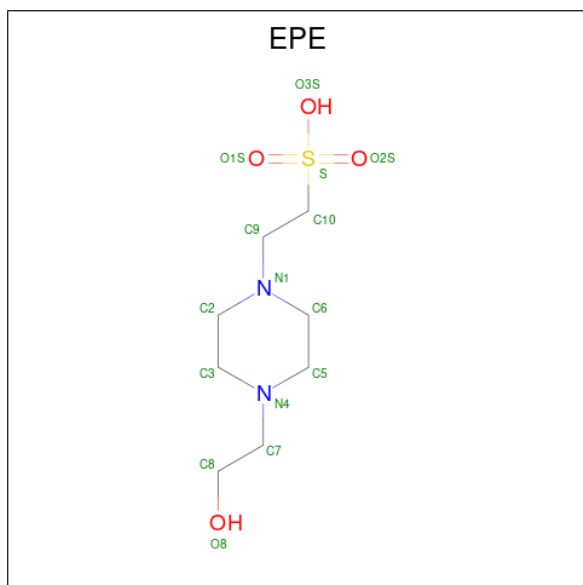
Mol	Chain	Residues	Atoms			ZeroOcc	AltConf
			Total	Fe	S		
4	A	1	8	4	4	0	0
4	A	1	8	4	4	0	0

Continued on next page...

Continued from previous page...

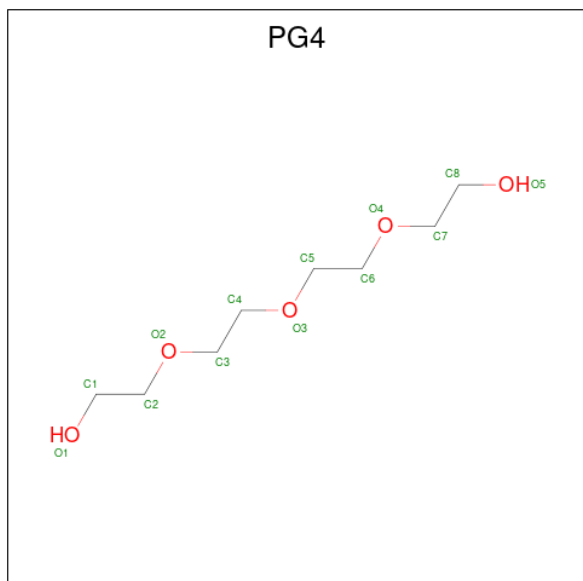
Mol	Chain	Residues	Atoms			ZeroOcc	AltConf
4	A	1	Total	Fe	S	0	0
			8	4	4		

- Molecule 5 is 4-(2-HYDROXYETHYL)-1-PIPERAZINE ETHANESULFONIC ACID (CCD ID: EPE) (formula:  $C_8H_{18}N_2O_4S$ ).



Mol	Chain	Residues	Atoms						ZeroOcc	AltConf
5	A	1	Total	C	H	N	O	S	2	0
			33	8	18	2	4	1		

- Molecule 6 is TETRAETHYLENE GLYCOL (CCD ID: PG4) (formula:  $C_8H_{18}O_5$ ).



Mol	Chain	Residues	Atoms				ZeroOcc	AltConf
6	B	1	Total	C	H	O	2	0
			31	8	18	5		

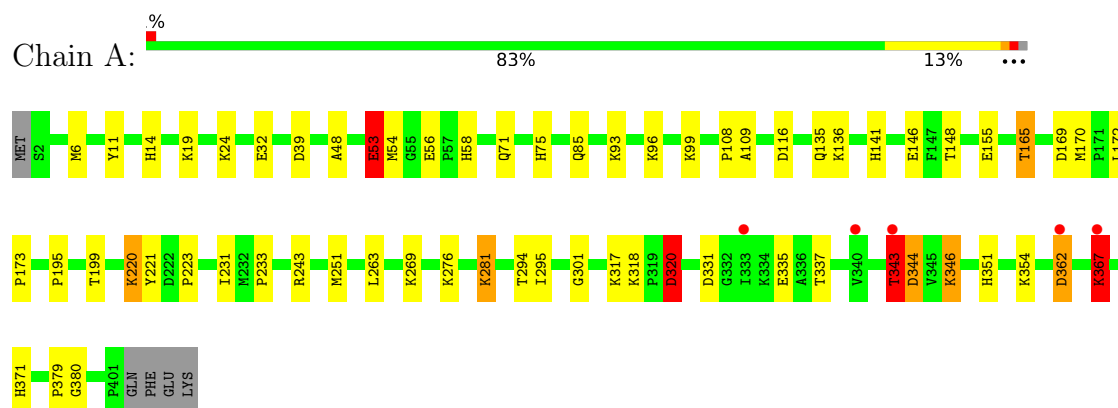
- Molecule 7 is water.

Mol	Chain	Residues	Atoms		ZeroOcc	AltConf
7	A	115	Total	O	0	0
			115	115		
7	B	26	Total	O	0	0
			26	26		

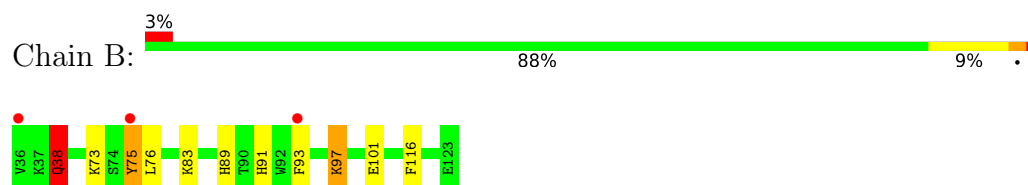
### 3 Residue-property plots

These plots are drawn for all protein, RNA, DNA and oligosaccharide chains in the entry. The first graphic for a chain summarises the proportions of the various outlier classes displayed in the second graphic. The second graphic shows the sequence view annotated by issues in geometry and electron density. Residues are color-coded according to the number of geometric quality criteria for which they contain at least one outlier: green = 0, yellow = 1, orange = 2 and red = 3 or more. A red dot above a residue indicates a poor fit to the electron density ( $RSRZ > 2$ ). Stretches of 2 or more consecutive residues without any outlier are shown as a green connector. Residues present in the sample, but not in the model, are shown in grey.

- Molecule 1: Periplasmic [Fe] hydrogenase large subunit



- Molecule 2: Periplasmic [Fe] hydrogenase small subunit



## 4 Data and refinement statistics

Property	Value	Source
Space group	P 21 21 21	Depositor
Cell constants a, b, c, $\alpha$ , $\beta$ , $\gamma$	49.52Å 84.79Å 88.26Å 90.00° 90.00° 90.00°	Depositor
Resolution (Å)	43.22 – 1.58 43.22 – 1.58	Depositor EDS
% Data completeness (in resolution range)	99.9 (43.22-1.58) 99.9 (43.22-1.58)	Depositor EDS
$R_{merge}$	0.15	Depositor
$R_{sym}$	(Not available)	Depositor
$\langle I/\sigma(I) \rangle$ <sup>1</sup>	1.25 (at 1.58Å)	Xtriage
Refinement program	REFMAC 5.8.0425, REFMAC 5.8.0425	Depositor
R, $R_{free}$	0.176 , 0.202 0.178 , 0.203	Depositor DCC
$R_{free}$ test set	2483 reflections (4.78%)	wwPDB-VP
Wilson B-factor (Å <sup>2</sup> )	18.5	Xtriage
Anisotropy	0.546	Xtriage
Bulk solvent $k_{sol}$ (e/Å <sup>3</sup> ), $B_{sol}$ (Å <sup>2</sup> )	0.40 , 35.7	EDS
L-test for twinning <sup>2</sup>	$\langle  L  \rangle = 0.49$ , $\langle L^2 \rangle = 0.32$	Xtriage
Estimated twinning fraction	0.018 for -h,l,k	Xtriage
$F_o, F_c$ correlation	0.97	EDS
Total number of atoms	7818	wwPDB-VP
Average B, all atoms (Å <sup>2</sup> )	24.0	wwPDB-VP

Xtriage's analysis on translational NCS is as follows: *The largest off-origin peak in the Patterson function is 5.71% of the height of the origin peak. No significant pseudotranslation is detected.*

<sup>1</sup>Intensities estimated from amplitudes.

<sup>2</sup>Theoretical values of  $\langle |L| \rangle$ ,  $\langle L^2 \rangle$  for acentric reflections are 0.5, 0.333 respectively for untwinned datasets, and 0.375, 0.2 for perfectly twinned datasets.



## 5 Model quality

### 5.1 Standard geometry

Bond lengths and bond angles in the following residue types are not validated in this section: 402, EPE, SF4, PG4

The Z score for a bond length (or angle) is the number of standard deviations the observed value is removed from the expected value. A bond length (or angle) with  $|Z| > 5$  is considered an outlier worth inspection. RMSZ is the root-mean-square of all Z scores of the bond lengths (or angles).

Mol	Chain	Bond lengths		Bond angles	
		RMSZ	$\# Z  > 5$	RMSZ	$\# Z  > 5$
1	A	1.81	18/3171 (0.6%)	1.48	39/4292 (0.9%)
2	B	0.91	3/761 (0.4%)	1.25	8/1028 (0.8%)
All	All	1.68	21/3932 (0.5%)	1.44	47/5320 (0.9%)

Chiral center outliers are detected by calculating the chiral volume of a chiral center and verifying if the center is modelled as a planar moiety or with the opposite hand. A planarity outlier is detected by checking planarity of atoms in a peptide group, atoms in a mainchain group or atoms of a sidechain that are expected to be planar.

Mol	Chain	#Chirality outliers	#Planarity outliers
1	A	0	5
2	B	0	2
All	All	0	7

All (21) bond length outliers are listed below:

Mol	Chain	Res	Type	Atoms	Z	Observed(Å)	Ideal(Å)
1	A	343	THR	CB-OG1	60.58	2.40	1.43
1	A	367	LYS	C-O	-32.26	0.76	1.24
1	A	367	LYS	CA-C	28.08	1.87	1.52
1	A	367	LYS	CA-CB	-24.53	1.16	1.53
1	A	96	LYS	CD-CE	23.33	2.22	1.52
1	A	169	ASP	CB-CG	21.25	2.05	1.52
1	A	320[A]	ASP	CB-CG	20.57	2.03	1.52
1	A	320[B]	ASP	CB-CG	20.57	2.03	1.52
1	A	367	LYS	N-CA	15.05	1.62	1.46
1	A	344	ASP	CG-OD2	-15.04	0.96	1.25
1	A	53	GLU	CG-CD	-13.45	1.18	1.52
1	A	346	LYS	CD-CE	12.99	1.91	1.52
2	B	101	GLU	CD-OE1	11.85	1.47	1.25
1	A	93	LYS	CG-CD	11.69	1.87	1.52

*Continued on next page...*

*Continued from previous page...*

Mol	Chain	Res	Type	Atoms	Z	Observed(Å)	Ideal(Å)
2	B	101	GLU	CD-OE2	-9.06	1.08	1.25
1	A	165	THR	C-O	8.39	1.35	1.24
1	A	135	GLN	CD-OE1	-7.02	1.10	1.23
1	A	346	LYS	CE-NZ	-6.74	1.29	1.49
1	A	54	MET	CG-SD	6.19	1.96	1.80
1	A	136	LYS	CE-NZ	-6.02	1.31	1.49
2	B	75	TYR	C-N	-5.58	1.25	1.33

All (47) bond angle outliers are listed below:

Mol	Chain	Res	Type	Atoms	Z	Observed(°)	Ideal(°)
1	A	53	GLU	CB-CG-CD	23.31	152.23	112.60
1	A	317	LYS	N-CA-CB	-17.96	80.37	111.08
1	A	165	THR	CA-C-O	17.89	140.47	119.18
1	A	343	THR	CA-CB-OG1	-16.16	85.35	109.60
1	A	320[A]	ASP	CB-CG-OD1	-14.56	84.91	118.40
1	A	320[B]	ASP	CB-CG-OD1	-14.56	84.91	118.40
1	A	165	THR	O-C-N	-14.47	101.86	122.41
1	A	346	LYS	CD-CE-NZ	14.32	157.71	111.90
1	A	367	LYS	O-C-N	13.09	140.19	122.26
1	A	344	ASP	OD1-CG-OD2	-12.79	92.21	122.90
1	A	96	LYS	CG-CD-CE	-12.68	82.13	111.30
1	A	346	LYS	CG-CD-CE	-12.33	82.94	111.30
1	A	53	GLU	CG-CD-OE1	-11.44	92.10	118.40
1	A	317	LYS	CB-CA-C	11.38	131.75	109.33
2	B	76	LEU	N-CA-C	-11.36	98.02	112.90
1	A	24	LYS	CD-CE-NZ	11.17	147.64	111.90
1	A	53	GLU	CG-CD-OE2	11.14	144.03	118.40
1	A	317	LYS	CA-CB-CG	-10.11	93.89	114.10
1	A	220	LYS	CD-CE-NZ	9.80	143.27	111.90
2	B	73	LYS	CD-CE-NZ	-9.58	81.24	111.90
1	A	367	LYS	N-CA-C	8.85	124.34	112.30
2	B	97	LYS	CD-CE-NZ	8.79	140.02	111.90
1	A	318	LYS	CB-CG-CD	-8.14	92.58	111.30
1	A	320[A]	ASP	CB-CG-OD2	-7.52	101.10	118.40
1	A	320[B]	ASP	CB-CG-OD2	-7.52	101.10	118.40
1	A	318	LYS	CA-CB-CG	-7.43	99.24	114.10
1	A	320[A]	ASP	CA-CB-CG	7.37	119.97	112.60
1	A	320[B]	ASP	CA-CB-CG	7.37	119.97	112.60
1	A	344	ASP	CB-CG-OD2	7.24	135.05	118.40
1	A	367	LYS	CA-CB-CG	7.12	128.34	114.10
1	A	276	LYS	CB-CG-CD	6.82	126.99	111.30

*Continued on next page...*

*Continued from previous page...*

Mol	Chain	Res	Type	Atoms	Z	Observed(°)	Ideal(°)
1	A	269	LYS	CG-CD-CE	-6.65	96.00	111.30
1	A	136	LYS	CD-CE-NZ	6.41	132.42	111.90
2	B	38	GLN	OE1-CD-NE2	-6.33	116.27	122.60
1	A	367	LYS	CB-CA-C	-6.27	100.56	110.85
1	A	116	ASP	CA-CB-CG	6.24	118.84	112.60
1	A	367	LYS	N-CA-CB	6.21	121.80	111.49
1	A	367	LYS	CA-C-O	5.93	126.66	119.78
1	A	276	LYS	CG-CD-CE	5.72	124.46	111.30
1	A	32	GLU	CB-CA-C	-5.67	101.38	110.79
1	A	93	LYS	CB-CG-CD	-5.63	98.34	111.30
2	B	75	TYR	CA-C-N	5.63	131.88	121.52
2	B	75	TYR	C-N-CA	5.63	131.88	121.52
2	B	76	LEU	N-CA-CB	5.61	118.75	110.33
2	B	75	TYR	CB-CA-C	5.27	120.92	110.42
1	A	269	LYS	CD-CE-NZ	-5.27	95.04	111.90
1	A	362	ASP	CB-CA-C	-5.17	102.77	110.88

There are no chirality outliers.

All (7) planarity outliers are listed below:

Mol	Chain	Res	Type	Group
1	A	165	THR	Mainchain
1	A	243	ARG	Sidechain
1	A	320[A]	ASP	Sidechain
1	A	320[B]	ASP	Sidechain
1	A	344	ASP	Sidechain
2	B	38	GLN	Sidechain
2	B	75	TYR	Peptide

CLOSE-CONTACTS INFOmissingINFO

## 5.2 Torsion angles ⓘ

### 5.2.1 Protein backbone ⓘ

In the following table, the Percentiles column shows the percent Ramachandran outliers of the chain as a percentile score with respect to all X-ray entries followed by that with respect to entries of similar resolution.

The Analysed column shows the number of residues for which the backbone conformation was analysed, and the total number of residues.

Mol	Chain	Analysed	Favoured	Allowed	Outliers	Percentiles	
1	A	403/405 (100%)	396 (98%)	7 (2%)	0	100	100
2	B	89/88 (101%)	87 (98%)	2 (2%)	0	100	100
All	All	492/493 (100%)	483 (98%)	9 (2%)	0	100	100

There are no Ramachandran outliers to report.

### 5.2.2 Protein sidechains ⓘ

In the following table, the Percentiles column shows the percent sidechain outliers of the chain as a percentile score with respect to all X-ray entries followed by that with respect to entries of similar resolution.

The Analysed column shows the number of residues for which the sidechain conformation was analysed, and the total number of residues.

Mol	Chain	Analysed	Rotameric	Outliers	Percentiles	
1	A	330/330 (100%)	320 (97%)	10 (3%)	36	8
2	B	79/76 (104%)	78 (99%)	1 (1%)	61	37
All	All	409/406 (101%)	398 (97%)	11 (3%)	39	10

All (11) residues with a non-rotameric sidechain are listed below:

Mol	Chain	Res	Type
1	A	53	GLU
1	A	99	LYS
1	A	148	THR
1	A	220	LYS
1	A	281	LYS
1	A	294	THR
1	A	335	GLU
1	A	343	THR
1	A	362	ASP
1	A	367	LYS
2	B	83	LYS

Sometimes sidechains can be flipped to improve hydrogen bonding and reduce clashes. All (11) such sidechains are listed below:

Mol	Chain	Res	Type
1	A	14	HIS
1	A	58	HIS

*Continued on next page...*

*Continued from previous page...*

Mol	Chain	Res	Type
1	A	75	HIS
1	A	135	GLN
1	A	141	HIS
1	A	174	GLN
1	A	351	HIS
1	A	358	GLN
1	A	371	HIS
2	B	89	HIS
2	B	91	HIS

### 5.2.3 RNA [i](#)

There are no RNA molecules in this entry.

## 5.3 Non-standard residues in protein, DNA, RNA chains [i](#)

There are no non-standard protein/DNA/RNA residues in this entry.

## 5.4 Carbohydrates [i](#)

There are no oligosaccharides in this entry.

## 5.5 Ligand geometry [i](#)

6 ligands are modelled in this entry.

In the following table, the Counts columns list the number of bonds (or angles) for which Mogul statistics could be retrieved, the number of bonds (or angles) that are observed in the model and the number of bonds (or angles) that are defined in the Chemical Component Dictionary. The Link column lists molecule types, if any, to which the group is linked. The Z score for a bond length (or angle) is the number of standard deviations the observed value is removed from the expected value. A bond length (or angle) with  $|Z| > 2$  is considered an outlier worth inspection. RMSZ is the root-mean-square of all Z scores of the bond lengths (or angles).

Mol	Type	Chain	Res	Link	Bond lengths			Bond angles		
					Counts	RMSZ	$\# Z  > 2$	Counts	RMSZ	$\# Z  > 2$
3	402	A	501	1	13,19,19	6.01	8 (61%)	2,36,36	3.67	2 (100%)
4	SF4	A	503	1	0,12,12	-	-	-		
4	SF4	A	504	1	0,12,12	-	-	-		
4	SF4	A	502	1	0,12,12	-	-	-		
6	PG4	B	201	-	12,12,12	0.15	0	11,11,11	0.40	0

Mol	Type	Chain	Res	Link	Bond lengths			Bond angles		
					Counts	RMSZ	# Z  > 2	Counts	RMSZ	# Z  > 2
5	EPE	A	505	-	15,15,15	0.62	1 (6%)	18,20,20	0.83	0

In the following table, the Chirals column lists the number of chiral outliers, the number of chiral centers analysed, the number of these observed in the model and the number defined in the Chemical Component Dictionary. Similar counts are reported in the Torsion and Rings columns. '-' means no outliers of that kind were identified.

Mol	Type	Chain	Res	Link	Chirals	Torsions	Rings
3	402	A	501	1	-	-	0/5/3/3
4	SF4	A	503	1	-	-	0/6/5/5
4	SF4	A	504	1	-	-	0/6/5/5
4	SF4	A	502	1	-	-	0/6/5/5
6	PG4	B	201	-	-	6/10/10/10	-
5	EPE	A	505	-	-	1/9/19/19	0/1/1/1

All (9) bond length outliers are listed below:

Mol	Chain	Res	Type	Atoms	Z	Observed(Å)	Ideal(Å)
3	A	501	402	C2-S2	-11.52	1.64	1.85
3	A	501	402	C1-S1	-10.39	1.66	1.85
3	A	501	402	S1-FE1	-8.49	2.14	2.26
3	A	501	402	S2-FE2	-7.70	2.15	2.26
3	A	501	402	S1-FE2	-6.10	2.17	2.26
3	A	501	402	S2-FE1	-5.99	2.17	2.26
3	A	501	402	O5-C5	2.96	1.22	1.17
3	A	501	402	O3-C3	2.71	1.22	1.15
5	A	505	EPE	O3S-S	2.18	1.55	1.47

All (2) bond angle outliers are listed below:

Mol	Chain	Res	Type	Atoms	Z	Observed(°)	Ideal(°)
3	A	501	402	S2-C2-N1	-4.19	105.65	117.18
3	A	501	402	S1-C1-N1	-3.07	108.74	117.18

There are no chirality outliers.

All (7) torsion outliers are listed below:

Mol	Chain	Res	Type	Atoms
5	A	505	EPE	C8-C7-N4-C3
6	B	201	PG4	O2-C3-C4-O3
6	B	201	PG4	O3-C5-C6-O4

*Continued on next page...*

*Continued from previous page...*

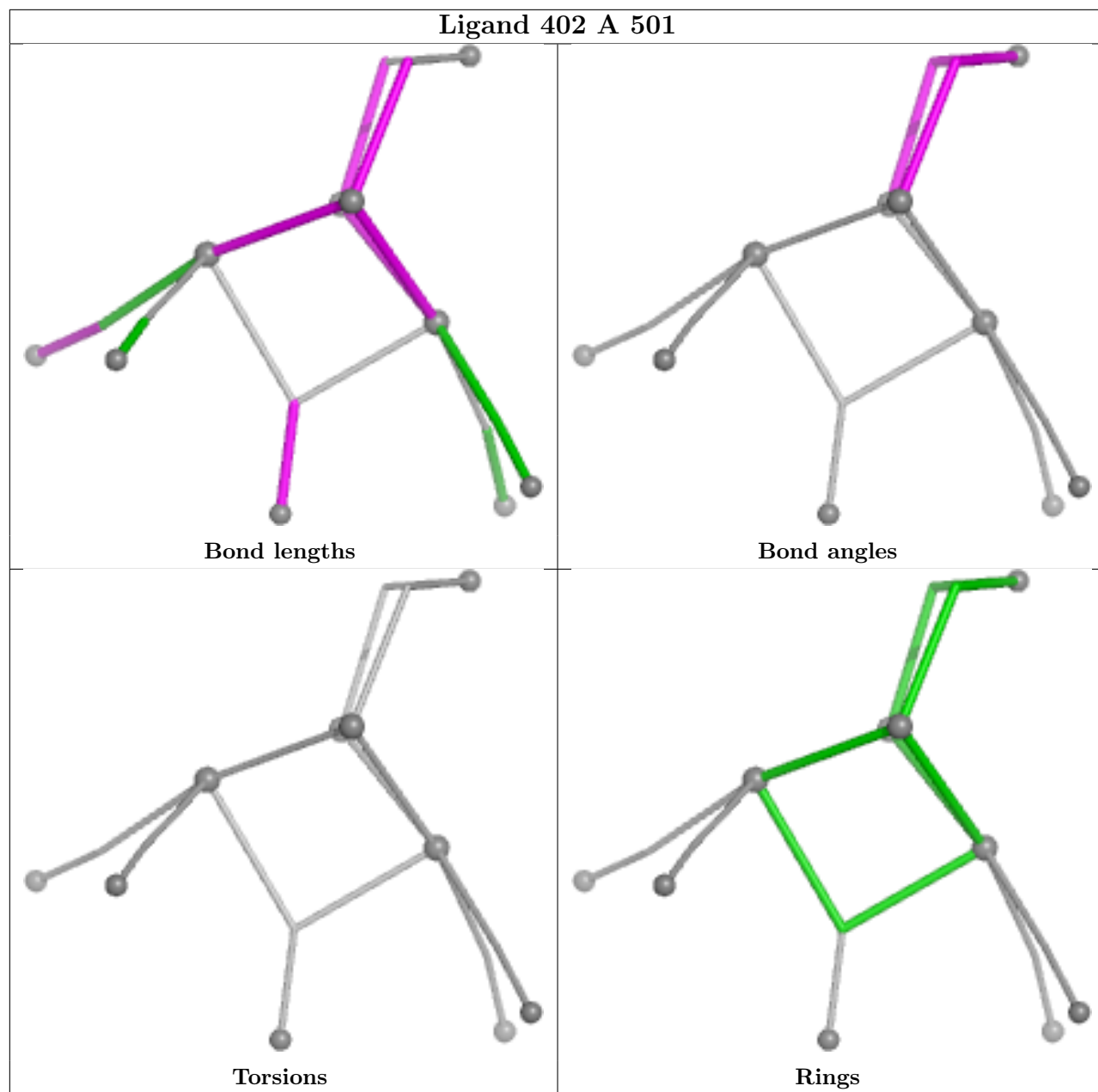
Mol	Chain	Res	Type	Atoms
6	B	201	PG4	O4-C7-C8-O5
6	B	201	PG4	C4-C3-O2-C2
6	B	201	PG4	C8-C7-O4-C6
6	B	201	PG4	C3-C4-O3-C5

There are no ring outliers.

No monomer is involved in short contacts.

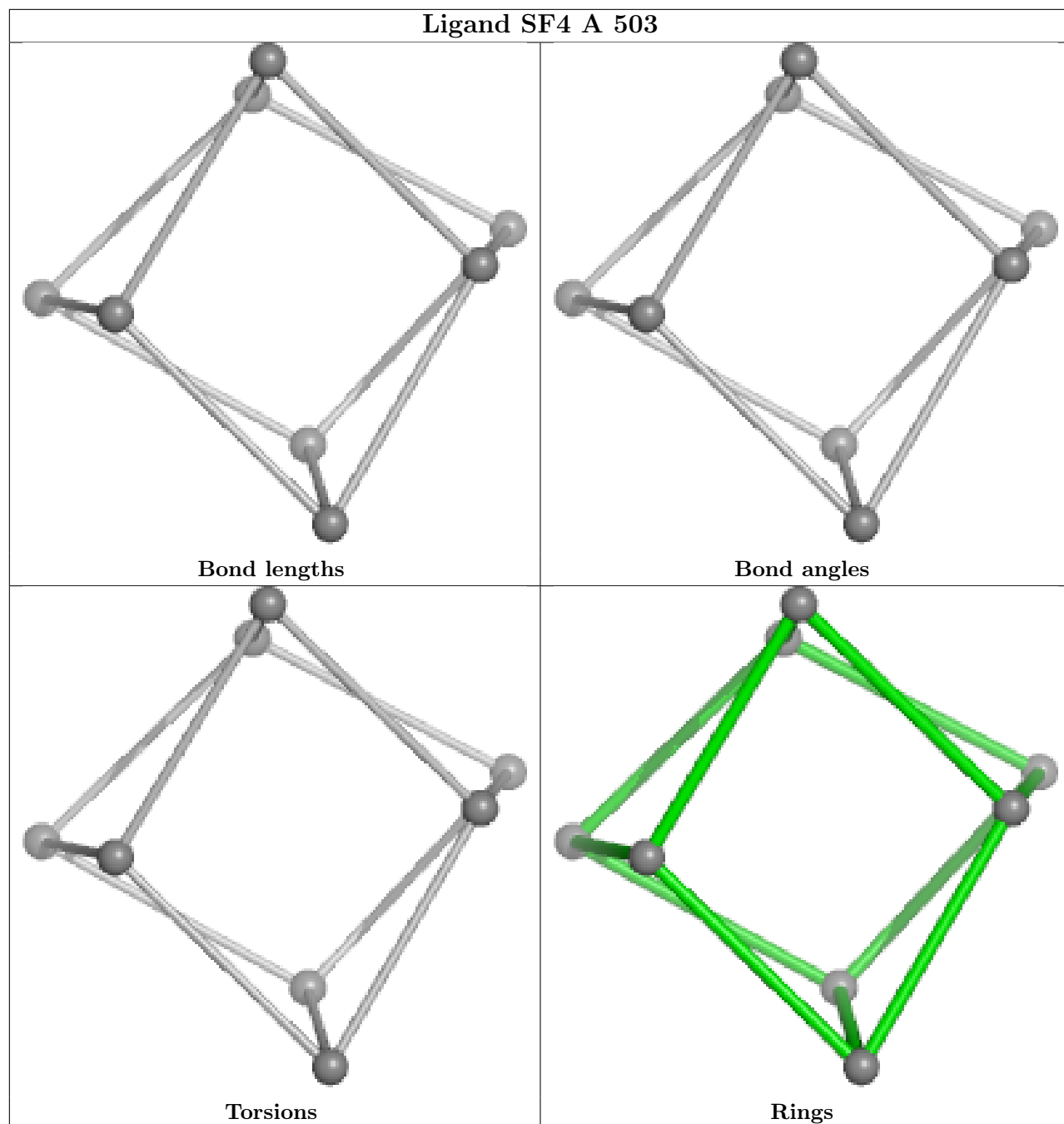
The following is a two-dimensional graphical depiction of Mogul quality analysis of bond lengths, bond angles, torsion angles, and ring geometry for all instances of the Ligand of Interest. In addition, ligands with molecular weight > 250 and outliers as shown on the validation Tables will also be included. For torsion angles, if less than 5% of the Mogul distribution of torsion angles is within 10 degrees of the torsion angle in question, then that torsion angle is considered an outlier. Any bond that is central to one or more torsion angles identified as an outlier by Mogul will be highlighted in the graph. For rings, the root-mean-square deviation (RMSD) between the ring in question and similar rings identified by Mogul is calculated over all ring torsion angles. If the average RMSD is greater than 60 degrees and the minimal RMSD between the ring in question and any Mogul-identified rings is also greater than 60 degrees, then that ring is considered an outlier. The outliers are highlighted in purple. The color gray indicates Mogul did not find sufficient equivalents in the CSD to analyse the geometry.

## Ligand 402 A 501

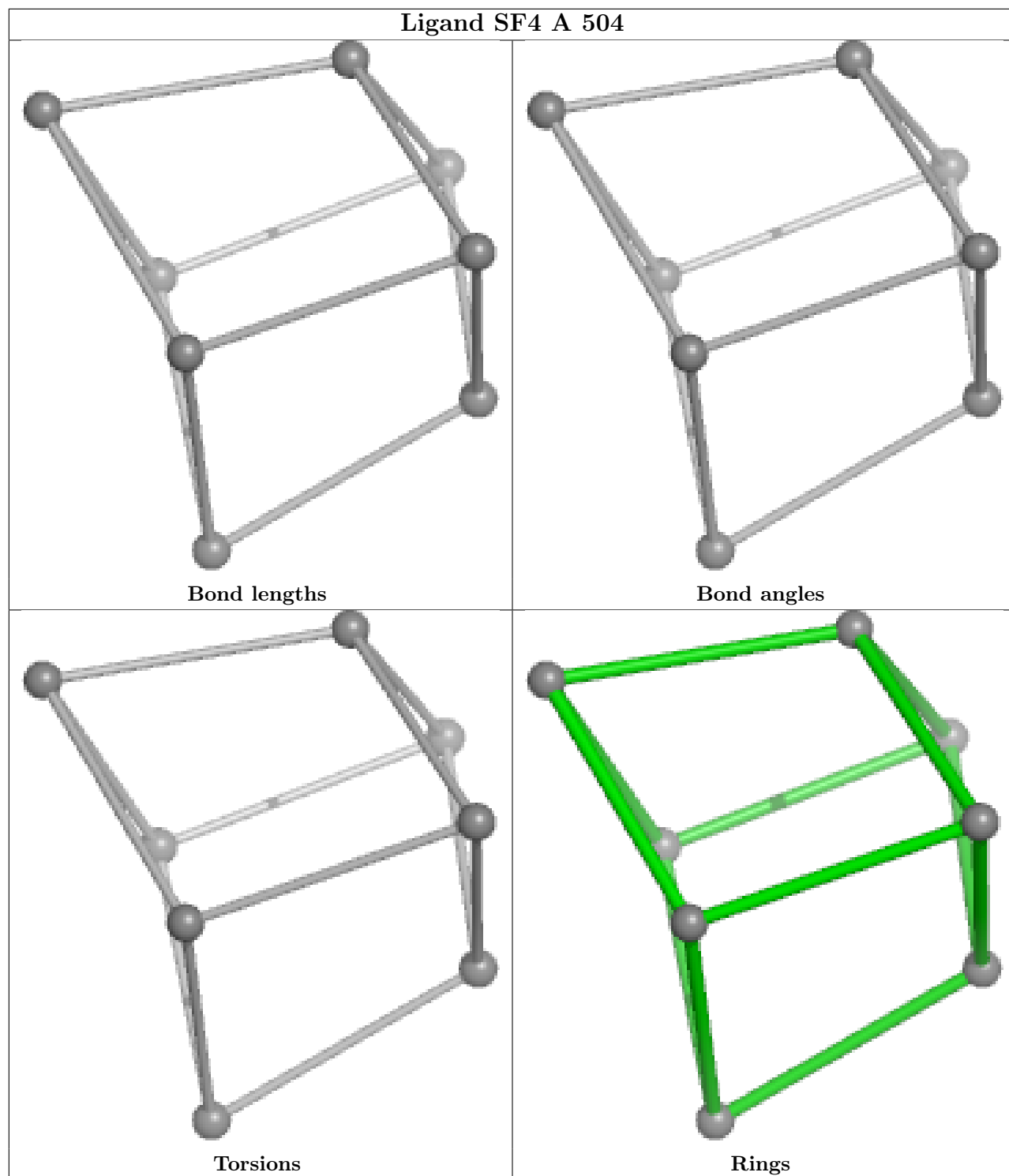


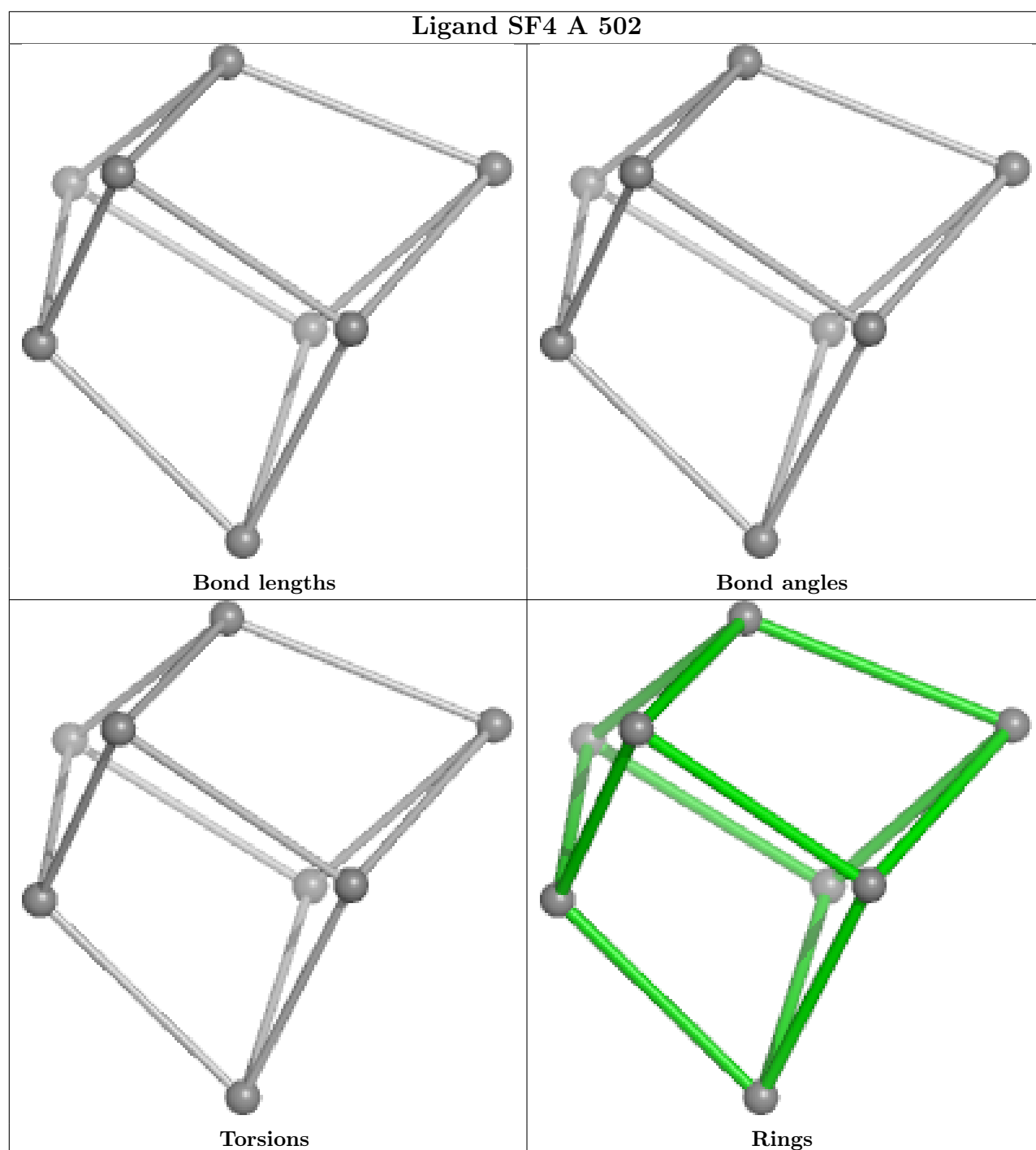


## Ligand SF4 A 503



## Ligand SF4 A 504





## 5.6 Other polymers [i](#)

There are no such residues in this entry.

## 5.7 Polymer linkage issues [i](#)

There are no chain breaks in this entry.

## 6 Fit of model and data [i](#)

### 6.1 Protein, DNA and RNA chains [i](#)

In the following table, the column labelled ‘#RSRZ > 2’ contains the number (and percentage) of RSRZ outliers, followed by percent RSRZ outliers for the chain as percentile scores relative to all X-ray entries and entries of similar resolution. The OWAB column contains the minimum, median, 95<sup>th</sup> percentile and maximum values of the occupancy-weighted average B-factor per residue. The column labelled ‘Q < 0.9’ lists the number of (and percentage) of residues with an average occupancy less than 0.9.

Mol	Chain	Analysed	<RSRZ>	#RSRZ>2	OWAB(Å <sup>2</sup> )	Q<0.9
1	A	400/405 (98%)	0.10	5 (1%) 75 83	7, 21, 37, 68	27 (6%)
2	B	88/88 (100%)	0.22	3 (3%) 48 60	11, 23, 35, 49	7 (7%)
All	All	488/493 (98%)	0.12	8 (1%) 70 78	7, 22, 36, 68	34 (6%)

All (8) RSRZ outliers are listed below:

Mol	Chain	Res	Type	RSRZ
1	A	367	LYS	4.1
2	B	36	VAL	3.6
2	B	93	PHE	3.0
1	A	340	VAL	2.8
1	A	343	THR	2.3
1	A	333	ILE	2.0
2	B	75	TYR	2.0
1	A	362	ASP	2.0

### 6.2 Non-standard residues in protein, DNA, RNA chains [i](#)

There are no non-standard protein/DNA/RNA residues in this entry.

### 6.3 Carbohydrates [i](#)

There are no oligosaccharides in this entry.

### 6.4 Ligands [i](#)

In the following table, the Atoms column lists the number of modelled atoms in the group and the number defined in the chemical component dictionary. The B-factors column lists the minimum,

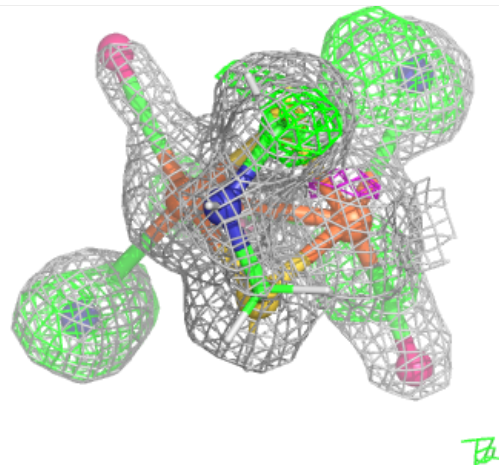
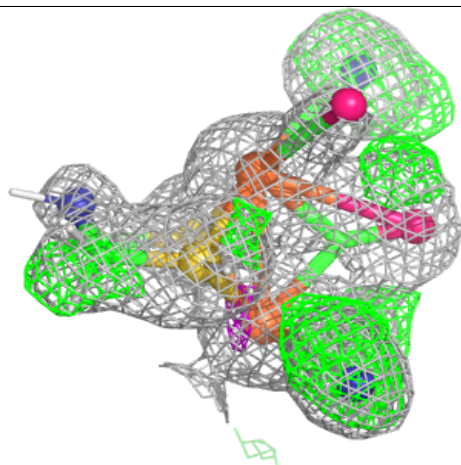
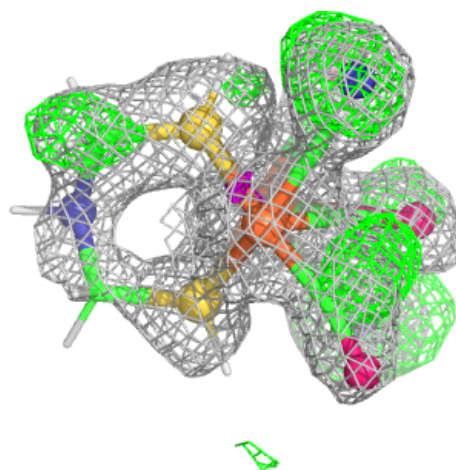
median, 95<sup>th</sup> percentile and maximum values of B factors of atoms in the group. The column labelled 'Q< 0.9' lists the number of atoms with occupancy less than 0.9.

Mol	Type	Chain	Res	Atoms	RSCC	RSR	B-factors(Å <sup>2</sup> )	Q<0.9
6	PG4	B	201	13/13	0.82	0.14	48,51,67,72	2
5	EPE	A	505	15/15	0.84	0.12	45,52,61,64	2
3	402	A	501	17/17	0.86	0.18	9,22,24,25	24
4	SF4	A	504	8/8	0.99	0.05	17,18,20,20	0
4	SF4	A	502	8/8	0.99	0.05	15,16,17,17	0
4	SF4	A	503	8/8	0.99	0.06	15,16,16,17	0

The following is a graphical depiction of the model fit to experimental electron density of all instances of the Ligand of Interest. In addition, ligands with molecular weight > 250 and outliers as shown on the geometry validation Tables will also be included. Each fit is shown from different orientation to approximate a three-dimensional view.

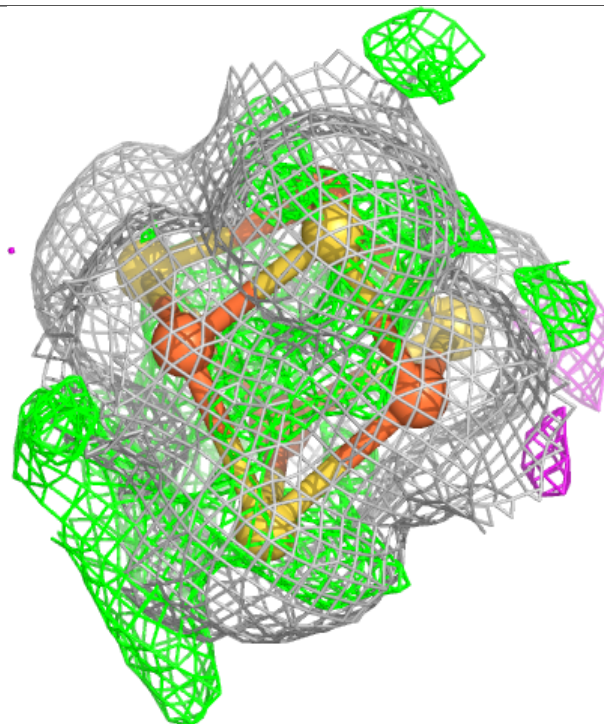
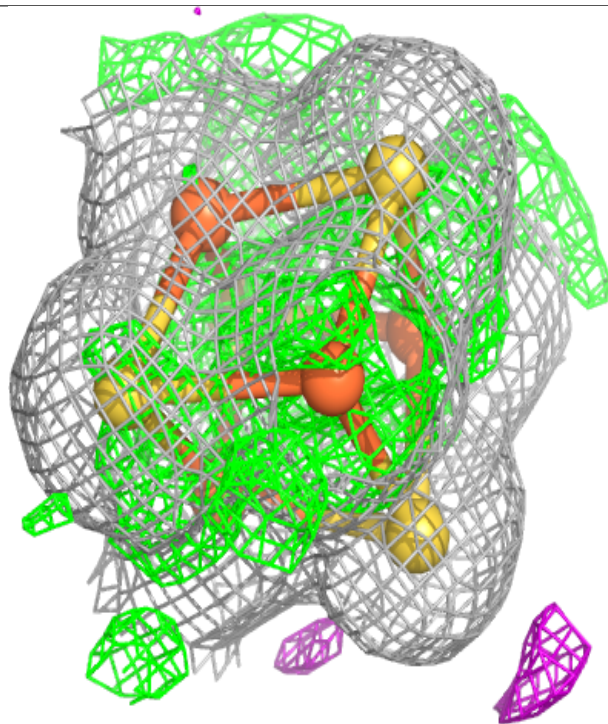
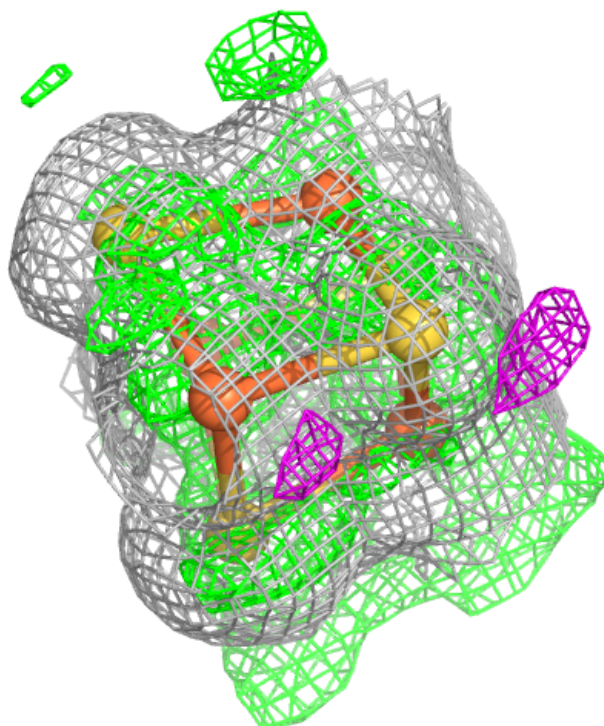
**Electron density around 402 A 501:**

2mF<sub>o</sub>-DF<sub>c</sub> (at 0.7 rmsd) in gray  
mF<sub>o</sub>-DF<sub>c</sub> (at 3 rmsd) in purple (negative)  
and green (positive)



**Electron density around SF4 A 504:**

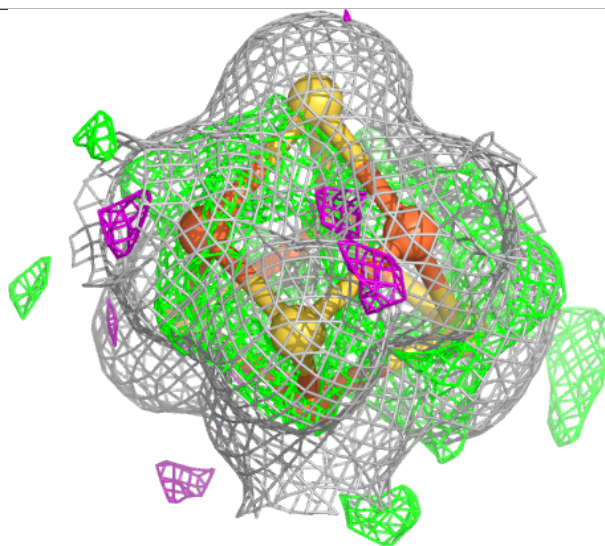
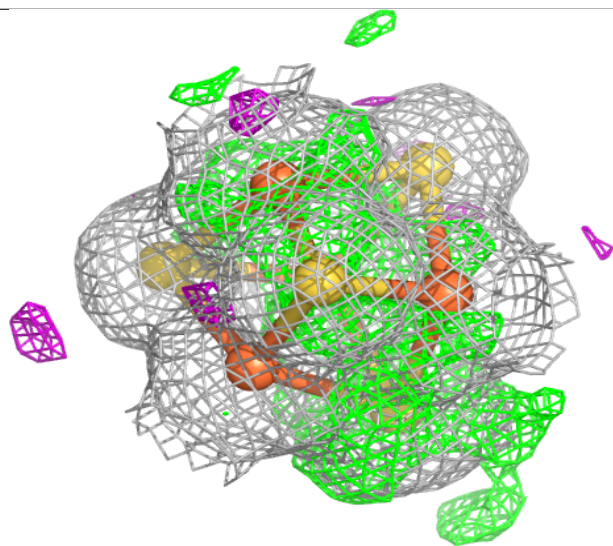
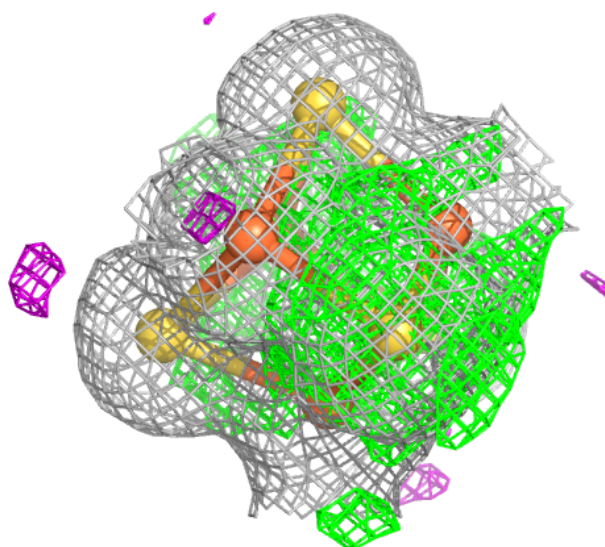
$2mF_o - DF_c$  (at 0.7 rmsd) in gray  
 $mF_o - DF_c$  (at 3 rmsd) in purple (negative)  
and green (positive)





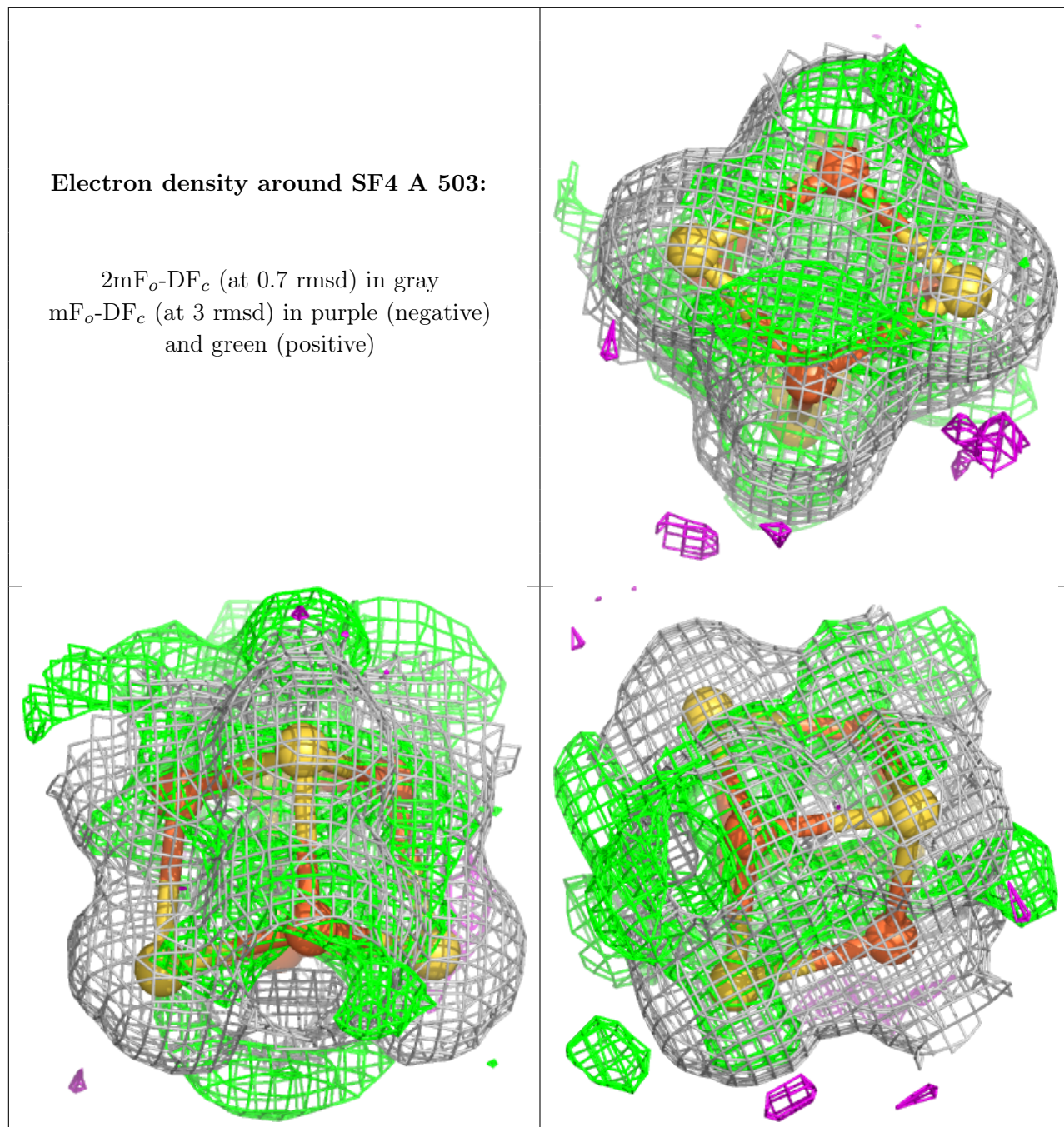
**Electron density around SF4 A 502:**

$2mF_o-DF_c$  (at 0.7 rmsd) in gray  
 $mF_o-DF_c$  (at 3 rmsd) in purple (negative)  
and green (positive)



**Electron density around SF4 A 503:**

$2mF_o-DF_c$  (at 0.7 rmsd) in gray  
 $mF_o-DF_c$  (at 3 rmsd) in purple (negative)  
and green (positive)



## 6.5 Other polymers ⓘ

There are no such residues in this entry.