



Full wwPDB EM Validation Report ⓘ

Jun 23, 2026 – 11:29 AM EDT

PDB ID : 9PJ5 / pdb_00009pj5
EMDB ID : EMD-71680
Title : Closed-state structure of wild-type human TRPV3 purified in GDN detergent
Authors : Purohit, R.; Khau, J.; Nadezhdin, K.D.; Sobolevsky, A.I.
Deposited on : 2025-07-11
Resolution : 2.76 Å(reported)

This is a Full wwPDB EM Validation Report for a publicly released PDB entry.

We welcome your comments at validation@mail.wwpdb.org

A user guide is available at

<https://www.wwpdb.org/validation/2017/EMValidationReportHelp>

with specific help available everywhere you see the ⓘ symbol.

The types of validation reports are described at

<http://www.wwpdb.org/validation/2017/FAQs#types>.

The following versions of software and data (see [references ⓘ](#)) were used in the production of this report:

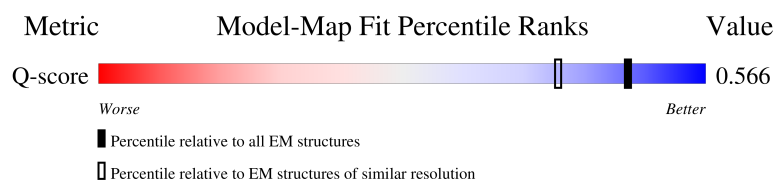
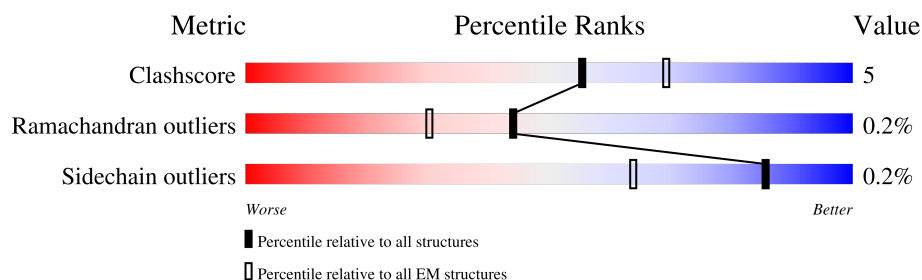
EMDB validation analysis : 0.0.1.dev132
Mogul : 2022.3.0, CSD as543be (2022)
MolProbity : 4-5-2 with Phenix2.0
Buster-report : wwPDB partial adaption of 1.1.7 (2018)
Percentile statistics : 20250101.v01 (using entries in the PDB archive January 1st 2025)
EM percentile statistics : 202505.v01 (Using data in the EMDB archive up until May 2025)
MapQ : 1.9.13
Ideal geometry (proteins) : Engh & Huber (2001)
Ideal geometry (DNA, RNA) : Parkinson et al. (1996)
Validation Pipeline (wwPDB-VP) : 2.49

1 Overall quality at a glance

The following experimental techniques were used to determine the structure:
ELECTRON MICROSCOPY





The reported resolution of this entry is 2.76 Å.

Percentile scores (ranging between 0-100) for global validation metrics of the entry are shown in the following graphic. The table shows the number of entries on which the scores are based.



Metric	Whole archive (#Entries)	EM structures (#Entries)	Similar EM resolution (#Entries, resolution range(Å))
Clashscore	229148	23984	-
Ramachandran outliers	224038	23583	-
Sidechain outliers	223484	23102	-
Q-score	-	25397	10642 (2.26 - 3.26)

The table below summarises the geometric issues observed across the polymeric chains and their fit to the map. The red, orange, yellow and green segments of the bar indicate the fraction of residues that contain outliers for ≥ 3 , 2, 1 and 0 types of geometric quality criteria respectively. A grey segment represents the fraction of residues that are not modelled. The numeric value for each fraction is indicated below the corresponding segment, with a dot representing fractions $\leq 5\%$. The upper red bar (where present) indicates the fraction of residues that have poor fit to the EM map (all-atom inclusion $< 40\%$). The numeric value is given above the bar.

Mol	Chain	Length	Quality of chain
1	A	808	 70%7%23%
1	B	808	 70%7%23%
1	C	808	 70%7%23%
1	D	808	 70%7%23%

2 Entry composition

There are 4 unique types of molecules in this entry. The entry contains 22278 atoms, of which 0 are hydrogens and 0 are deuteriums.

In the tables below, the AltConf column contains the number of residues with at least one atom in alternate conformation and the Trace column contains the number of residues modelled with at most 2 atoms.

- Molecule 1 is a protein called Transient receptor potential cation channel subfamily V member 3.

Mol	Chain	Residues	Atoms					AltConf	Trace
1	A	623	Total	C	N	O	S	0	0
			5075	3302	839	903	31		
1	B	623	Total	C	N	O	S	0	0
			5075	3302	839	903	31		
1	C	623	Total	C	N	O	S	0	0
			5075	3302	839	903	31		
1	D	623	Total	C	N	O	S	0	0
			5075	3302	839	903	31		

There are 68 discrepancies between the modelled and reference sequences:

Chain	Residue	Modelled	Actual	Comment	Reference
A	792	LEU	-	expression tag	UNP Q8NET8
A	793	VAL	-	expression tag	UNP Q8NET8
A	794	PRO	-	expression tag	UNP Q8NET8
A	795	ARG	-	expression tag	UNP Q8NET8
A	796	GLY	-	expression tag	UNP Q8NET8
A	797	SER	-	expression tag	UNP Q8NET8
A	798	ALA	-	expression tag	UNP Q8NET8
A	799	ALA	-	expression tag	UNP Q8NET8
A	800	ALA	-	expression tag	UNP Q8NET8
A	801	TRP	-	expression tag	UNP Q8NET8
A	802	SER	-	expression tag	UNP Q8NET8
A	803	HIS	-	expression tag	UNP Q8NET8
A	804	PRO	-	expression tag	UNP Q8NET8
A	805	GLN	-	expression tag	UNP Q8NET8
A	806	PHE	-	expression tag	UNP Q8NET8
A	807	GLU	-	expression tag	UNP Q8NET8
A	808	LYS	-	expression tag	UNP Q8NET8
B	792	LEU	-	expression tag	UNP Q8NET8
B	793	VAL	-	expression tag	UNP Q8NET8
B	794	PRO	-	expression tag	UNP Q8NET8
B	795	ARG	-	expression tag	UNP Q8NET8

Continued on next page...

Continued from previous page...

Chain	Residue	Modelled	Actual	Comment	Reference
B	796	GLY	-	expression tag	UNP Q8NET8
B	797	SER	-	expression tag	UNP Q8NET8
B	798	ALA	-	expression tag	UNP Q8NET8
B	799	ALA	-	expression tag	UNP Q8NET8
B	800	ALA	-	expression tag	UNP Q8NET8
B	801	TRP	-	expression tag	UNP Q8NET8
B	802	SER	-	expression tag	UNP Q8NET8
B	803	HIS	-	expression tag	UNP Q8NET8
B	804	PRO	-	expression tag	UNP Q8NET8
B	805	GLN	-	expression tag	UNP Q8NET8
B	806	PHE	-	expression tag	UNP Q8NET8
B	807	GLU	-	expression tag	UNP Q8NET8
B	808	LYS	-	expression tag	UNP Q8NET8
C	792	LEU	-	expression tag	UNP Q8NET8
C	793	VAL	-	expression tag	UNP Q8NET8
C	794	PRO	-	expression tag	UNP Q8NET8
C	795	ARG	-	expression tag	UNP Q8NET8
C	796	GLY	-	expression tag	UNP Q8NET8
C	797	SER	-	expression tag	UNP Q8NET8
C	798	ALA	-	expression tag	UNP Q8NET8
C	799	ALA	-	expression tag	UNP Q8NET8
C	800	ALA	-	expression tag	UNP Q8NET8
C	801	TRP	-	expression tag	UNP Q8NET8
C	802	SER	-	expression tag	UNP Q8NET8
C	803	HIS	-	expression tag	UNP Q8NET8
C	804	PRO	-	expression tag	UNP Q8NET8
C	805	GLN	-	expression tag	UNP Q8NET8
C	806	PHE	-	expression tag	UNP Q8NET8
C	807	GLU	-	expression tag	UNP Q8NET8
C	808	LYS	-	expression tag	UNP Q8NET8
D	792	LEU	-	expression tag	UNP Q8NET8
D	793	VAL	-	expression tag	UNP Q8NET8
D	794	PRO	-	expression tag	UNP Q8NET8
D	795	ARG	-	expression tag	UNP Q8NET8
D	796	GLY	-	expression tag	UNP Q8NET8
D	797	SER	-	expression tag	UNP Q8NET8
D	798	ALA	-	expression tag	UNP Q8NET8
D	799	ALA	-	expression tag	UNP Q8NET8
D	800	ALA	-	expression tag	UNP Q8NET8
D	801	TRP	-	expression tag	UNP Q8NET8
D	802	SER	-	expression tag	UNP Q8NET8
D	803	HIS	-	expression tag	UNP Q8NET8

Continued on next page...

Continued from previous page...

Chain	Residue	Modelled	Actual	Comment	Reference
D	804	PRO	-	expression tag	UNP Q8NET8
D	805	GLN	-	expression tag	UNP Q8NET8
D	806	PHE	-	expression tag	UNP Q8NET8
D	807	GLU	-	expression tag	UNP Q8NET8
D	808	LYS	-	expression tag	UNP Q8NET8

- Molecule 2 is (2S)-3-(hexadecanoyloxy)-2-[(9Z)-octadec-9-enoyloxy]propyl 2-(trimethylamm onio)ethyl phosphate (CCD ID: POV) (formula: C₄₂H₈₂NO₈P).



Mol	Chain	Residues	Atoms					AltConf
2	A	1	Total	C	N	O	P	0
			52	42	1	8	1	
2	A	1	Total	C	N	O	P	0
			52	42	1	8	1	
2	A	1	Total	C	N	O	P	0
			52	42	1	8	1	
2	A	1	Total	C	N	O	P	0
			52	42	1	8	1	
2	A	1	Total	C	N	O	P	0
			52	42	1	8	1	
2	A	1	Total	C	N	O	P	0
			52	42	1	8	1	
2	A	1	Total	C	N	O	P	0
			52	42	1	8	1	

Continued on next page...

Continued from previous page...

Mol	Chain	Residues	Atoms					AltConf
2	B	1	Total	C	N	O	P	0
			52	42	1	8	1	
2	B	1	Total	C	N	O	P	0
			52	42	1	8	1	
2	B	1	Total	C	N	O	P	0
			52	42	1	8	1	
2	B	1	Total	C	N	O	P	0
			52	42	1	8	1	
2	B	1	Total	C	N	O	P	0
			52	42	1	8	1	
2	B	1	Total	C	N	O	P	0
			52	42	1	8	1	
2	B	1	Total	C	N	O	P	0
			52	42	1	8	1	
2	C	1	Total	C	N	O	P	0
			52	42	1	8	1	
2	C	1	Total	C	N	O	P	0
			52	42	1	8	1	
2	C	1	Total	C	N	O	P	0
			52	42	1	8	1	
2	C	1	Total	C	N	O	P	0
			52	42	1	8	1	
2	C	1	Total	C	N	O	P	0
			52	42	1	8	1	
2	C	1	Total	C	N	O	P	0
			52	42	1	8	1	
2	C	1	Total	C	N	O	P	0
			52	42	1	8	1	
2	C	1	Total	C	N	O	P	0
			52	42	1	8	1	
2	D	1	Total	C	N	O	P	0
			52	42	1	8	1	
2	D	1	Total	C	N	O	P	0
			52	42	1	8	1	
2	D	1	Total	C	N	O	P	0
			52	42	1	8	1	
2	D	1	Total	C	N	O	P	0
			52	42	1	8	1	

Continued on next page...

Continued from previous page...

Mol	Chain	Residues	Atoms					AltConf
2	D	1	Total	C	N	O	P	0
			52	42	1	8	1	
2	D	1	Total	C	N	O	P	0
			52	42	1	8	1	
2	D	1	Total	C	N	O	P	0
			52	42	1	8	1	

- Molecule 3 is SODIUM ION (CCD ID: NA) (formula: Na).

Mol	Chain	Residues	Atoms		AltConf
3	A	2	Total	Na	0
			2	2	

- Molecule 4 is water.

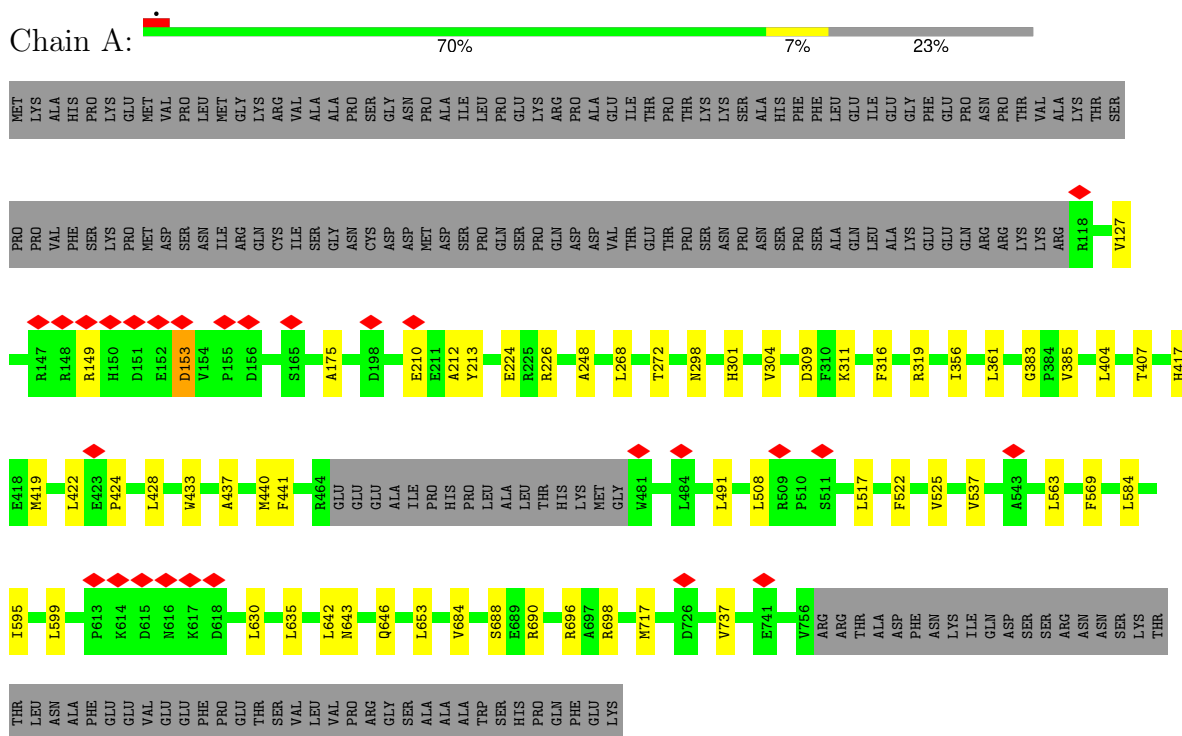
Mol	Chain	Residues	Atoms		AltConf
4	A	79	Total	O	0
			79	79	
4	B	78	Total	O	0
			78	78	
4	C	77	Total	O	0
			77	77	
4	D	78	Total	O	0
			78	78	

3 Residue-property plots

These plots are drawn for all protein, RNA, DNA and oligosaccharide chains in the entry. The first graphic for a chain summarises the proportions of the various outlier classes displayed in the second graphic. The second graphic shows the sequence view annotated by issues in geometry and atom inclusion in map density. Residues are color-coded according to the number of geometric quality criteria for which they contain at least one outlier: green = 0, yellow = 1, orange = 2 and red = 3 or more. A red diamond above a residue indicates a poor fit to the EM map for this residue (all-atom inclusion < 40%). Stretches of 2 or more consecutive residues without any outlier are shown as a green connector. Residues present in the sample, but not in the model, are shown in grey.

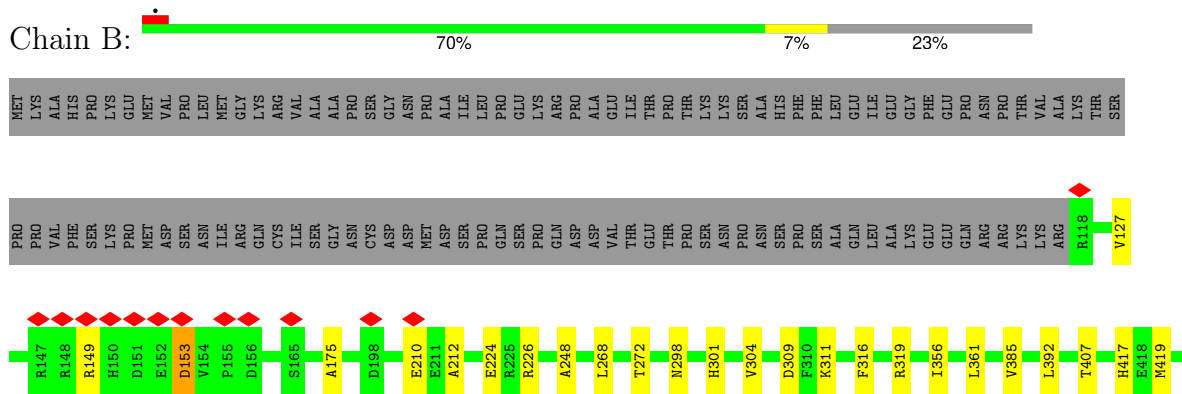
- Molecule 1: Transient receptor potential cation channel subfamily V member 3

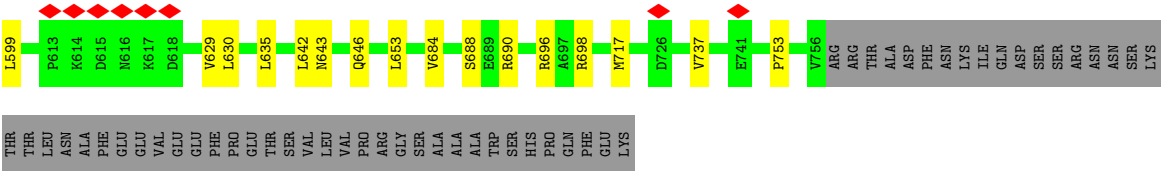
Chain A:



- Molecule 1: Transient receptor potential cation channel subfamily V member 3

Chain B:





4 Experimental information

Property	Value	Source
EM reconstruction method	SINGLE PARTICLE	Depositor
Imposed symmetry	POINT, Not provided	
Number of particles used	399501	Depositor
Resolution determination method	FSC 0.143 CUT-OFF	Depositor
CTF correction method	PHASE FLIPPING AND AMPLITUDE CORRECTION	Depositor
Microscope	TFS KRIOS	Depositor
Voltage (kV)	300	Depositor
Electron dose ($e^-/\text{\AA}^2$)	50	Depositor
Minimum defocus (nm)	700	Depositor
Maximum defocus (nm)	2200	Depositor
Magnification	Not provided	
Image detector	FEI FALCON IV (4k x 4k)	Depositor
Maximum map value	1.414	Depositor
Minimum map value	-0.993	Depositor
Average map value	0.001	Depositor
Map value standard deviation	0.031	Depositor
Recommended contour level	0.09	Depositor
Map size (Å)	292.0, 292.0, 292.0	wwPDB
Map dimensions	400, 400, 400	wwPDB
Map angles (°)	90.0, 90.0, 90.0	wwPDB
Pixel spacing (Å)	0.73, 0.73, 0.73	Depositor

5 Model quality

5.1 Standard geometry

Bond lengths and bond angles in the following residue types are not validated in this section: POV, NA

The Z score for a bond length (or angle) is the number of standard deviations the observed value is removed from the expected value. A bond length (or angle) with $|Z| > 5$ is considered an outlier worth inspection. RMSZ is the root-mean-square of all Z scores of the bond lengths (or angles).

Mol	Chain	Bond lengths		Bond angles	
		RMSZ	$\# Z > 5$	RMSZ	$\# Z > 5$
1	A	0.20	0/5186	0.56	2/7016 (0.0%)
1	B	0.20	0/5186	0.56	2/7016 (0.0%)
1	C	0.20	0/5186	0.56	2/7016 (0.0%)
1	D	0.20	0/5186	0.56	2/7016 (0.0%)
All	All	0.20	0/20744	0.56	8/28064 (0.0%)

There are no bond length outliers.

All (8) bond angle outliers are listed below:

Mol	Chain	Res	Type	Atoms	Z	Observed(°)	Ideal(°)
1	B	153	ASP	CA-C-N	5.59	124.80	120.33
1	B	153	ASP	C-N-CA	5.59	124.80	120.33
1	A	153	ASP	CA-C-N	5.54	124.77	120.33
1	A	153	ASP	C-N-CA	5.54	124.77	120.33
1	D	153	ASP	CA-C-N	5.50	124.73	120.33
1	D	153	ASP	C-N-CA	5.50	124.73	120.33
1	C	153	ASP	CA-C-N	5.46	124.70	120.33
1	C	153	ASP	C-N-CA	5.46	124.70	120.33

There are no chirality outliers.

There are no planarity outliers.

5.2 Too-close contacts

In the following table, the Non-H and H(model) columns list the number of non-hydrogen atoms and hydrogen atoms in the chain respectively. The H(added) column lists the number of hydrogen atoms added and optimized by MolProbity. The Clashes column lists the number of clashes within the asymmetric unit, whereas Symm-Clashes lists symmetry-related clashes.

Mol	Chain	Non-H	H(model)	H(added)	Clashes	Symm-Clashes
1	A	5075	0	5139	37	0
1	B	5075	0	5139	38	0
1	C	5075	0	5139	39	0
1	D	5075	0	5139	39	0
2	A	416	0	648	31	0
2	B	416	0	646	33	0
2	C	468	0	727	34	0
2	D	364	0	565	29	0
3	A	2	0	0	0	0
4	A	79	0	0	1	0
4	B	78	0	0	1	0
4	C	77	0	0	1	0
4	D	78	0	0	1	0
All	All	22278	0	23142	224	0

The all-atom clashscore is defined as the number of clashes found per 1000 atoms (including hydrogen atoms). The all-atom clashscore for this structure is 5.

All (224) close contacts within the same asymmetric unit are listed below, sorted by their clash magnitude.

Atom-1	Atom-2	Interatomic distance (Å)	Clash overlap (Å)
1:C:696:ARG:NH2	4:C:1003:HOH:O	2.36	0.57
2:A:905:POV:H212	2:A:905:POV:H31D	1.87	0.57
1:B:226:ARG:NH1	1:B:272:THR:O	2.40	0.55
1:C:433:TRP:HA	1:C:437:ALA:HB3	1.89	0.55
1:D:433:TRP:HA	1:D:437:ALA:HB3	1.89	0.55
1:D:407:THR:HG23	1:D:419:MET:HE3	1.89	0.55
1:B:696:ARG:NH2	4:B:1004:HOH:O	2.39	0.54
1:B:407:THR:HG23	1:B:419:MET:HE3	1.90	0.54
1:C:226:ARG:NH1	1:C:272:THR:O	2.40	0.54
1:C:407:THR:HG23	1:C:419:MET:HE3	1.89	0.54
1:B:433:TRP:HA	1:B:437:ALA:HB3	1.89	0.54
1:D:226:ARG:NH1	1:D:272:THR:O	2.40	0.54
1:A:226:ARG:NH1	1:A:272:THR:O	2.40	0.54
1:A:407:THR:HG23	1:A:419:MET:HE3	1.89	0.54
1:A:433:TRP:HA	1:A:437:ALA:HB3	1.89	0.54
1:C:298:ASN:OD1	1:C:301:HIS:ND1	2.40	0.54
1:A:696:ARG:NH2	4:A:1009:HOH:O	2.41	0.53
1:D:298:ASN:OD1	1:D:301:HIS:ND1	2.40	0.53
1:C:584:LEU:HD12	2:C:903:POV:H3A	1.89	0.53
1:D:696:ARG:NH2	4:D:1010:HOH:O	2.42	0.52
1:B:653:LEU:HB2	2:B:907:POV:H1	1.91	0.52

Continued on next page...

Continued from previous page...

Atom-1	Atom-2	Interatomic distance (Å)	Clash overlap (Å)
2:A:906:POV:H23	1:D:630:LEU:HD13	1.92	0.52
1:C:653:LEU:HB2	2:C:907:POV:H1	1.90	0.52
1:B:298:ASN:OD1	1:B:301:HIS:ND1	2.39	0.52
1:C:630:LEU:HD13	2:C:909:POV:H23	1.91	0.52
1:A:298:ASN:OD1	1:A:301:HIS:ND1	2.40	0.51
2:B:905:POV:H215	2:C:903:POV:H27	1.93	0.51
2:C:904:POV:H31D	2:C:904:POV:H21G	1.91	0.51
1:A:440:MET:HE3	2:A:901:POV:H36	1.93	0.51
2:A:902:POV:H27	2:D:905:POV:H215	1.93	0.50
2:C:906:POV:H210	2:C:908:POV:H23	1.94	0.50
2:B:904:POV:H21G	2:B:904:POV:H31D	1.93	0.50
1:D:595:ILE:HG23	1:D:599:LEU:HD13	1.93	0.50
1:A:630:LEU:HD13	2:A:908:POV:H23	1.93	0.50
2:C:905:POV:H215	2:D:903:POV:H27	1.92	0.50
1:B:751:GLU:OE2	1:C:169:LYS:NZ	2.43	0.50
1:A:653:LEU:HB2	2:A:907:POV:H1	1.94	0.49
1:B:440:MET:HE3	2:B:902:POV:H36	1.94	0.49
1:D:522:PHE:HA	1:D:525:VAL:HG22	1.95	0.49
2:A:904:POV:H215	2:B:903:POV:H27	1.95	0.49
1:C:595:ILE:HG23	1:C:599:LEU:HD13	1.94	0.49
1:B:630:LEU:HD13	2:B:908:POV:H23	1.94	0.49
1:B:304:VAL:HG22	1:B:356:ILE:HG21	1.95	0.49
1:B:595:ILE:HG23	1:B:599:LEU:HD13	1.93	0.49
1:A:522:PHE:HA	1:A:525:VAL:HG22	1.95	0.49
1:A:595:ILE:HG23	1:A:599:LEU:HD13	1.93	0.48
1:C:522:PHE:HE2	2:C:904:POV:H1A	1.78	0.48
1:C:569:PHE:HE2	2:C:905:POV:H37	1.77	0.48
1:C:304:VAL:HG22	1:C:356:ILE:HG21	1.95	0.48
1:D:440:MET:HE3	2:D:902:POV:H36	1.95	0.48
2:A:905:POV:H210	2:B:901:POV:H23	1.95	0.48
1:D:653:LEU:HB2	2:D:907:POV:H1	1.94	0.48
1:B:522:PHE:HE2	2:B:904:POV:H1A	1.79	0.48
1:A:304:VAL:HG22	1:A:356:ILE:HG21	1.95	0.48
2:B:906:POV:H210	2:C:901:POV:H23	1.96	0.48
1:C:522:PHE:HA	1:C:525:VAL:HG22	1.95	0.48
1:B:584:LEU:HD12	2:B:903:POV:H3A	1.96	0.48
1:A:584:LEU:HD12	2:A:902:POV:H3A	1.96	0.47
2:A:903:POV:H34	2:A:903:POV:H37	1.61	0.47
1:B:522:PHE:HA	1:B:525:VAL:HG22	1.95	0.47
1:C:224:GLU:HB2	1:C:268:LEU:HD21	1.97	0.47
2:D:901:POV:H23	2:D:906:POV:H210	1.96	0.47

Continued on next page...

Continued from previous page...

Atom-1	Atom-2	Interatomic distance (Å)	Clash overlap (Å)
1:A:522:PHE:HE2	2:A:903:POV:H1A	1.79	0.47
1:B:316:PHE:HA	1:B:319:ARG:HE	1.80	0.47
1:C:316:PHE:HA	1:C:319:ARG:HE	1.80	0.47
1:D:304:VAL:HG22	1:D:356:ILE:HG21	1.95	0.47
1:B:419:MET:HA	1:B:422:LEU:HD13	1.97	0.47
1:D:522:PHE:HB2	2:D:904:POV:H14B	1.96	0.47
2:B:906:POV:H37A	2:B:906:POV:H34	1.67	0.47
1:C:149:ARG:HH12	1:C:153:ASP:H	1.63	0.47
2:D:902:POV:H22A	2:D:902:POV:H2	1.64	0.47
1:C:419:MET:HA	1:C:422:LEU:HD13	1.97	0.47
1:C:433:TRP:HD1	2:C:905:POV:H15B	1.79	0.47
1:D:522:PHE:HE2	2:D:904:POV:H1A	1.79	0.47
1:B:361:LEU:HD23	1:B:424:PRO:HG2	1.97	0.47
1:C:361:LEU:HD23	1:C:424:PRO:HG2	1.97	0.47
1:A:569:PHE:HE2	2:A:904:POV:H37	1.80	0.47
1:B:224:GLU:HB2	1:B:268:LEU:HD21	1.97	0.47
1:D:224:GLU:HB2	1:D:268:LEU:HD21	1.97	0.47
2:D:906:POV:H21C	2:D:906:POV:H31G	1.97	0.47
1:A:309:ASP:OD2	1:A:311:LYS:NZ	2.44	0.47
1:D:419:MET:HA	1:D:422:LEU:HD13	1.97	0.47
1:A:224:GLU:HB2	1:A:268:LEU:HD21	1.97	0.46
1:A:316:PHE:HA	1:A:319:ARG:HE	1.80	0.46
1:B:149:ARG:HH12	1:B:153:ASP:H	1.63	0.46
1:C:441:PHE:HD2	2:C:905:POV:H33A	1.78	0.46
2:D:904:POV:H21G	2:D:904:POV:H31D	1.97	0.46
1:A:635:LEU:HD21	1:A:642:LEU:HD13	1.98	0.46
1:D:149:ARG:HH12	1:D:153:ASP:H	1.63	0.46
1:D:643:ASN:OD1	1:D:646:GLN:NE2	2.48	0.46
1:A:419:MET:HA	1:A:422:LEU:HD13	1.97	0.46
1:B:212:ALA:HA	1:B:248:ALA:H	1.81	0.46
1:D:316:PHE:HA	1:D:319:ARG:HE	1.80	0.46
1:B:643:ASN:OD1	1:B:646:GLN:NE2	2.49	0.46
1:D:361:LEU:HD23	1:D:424:PRO:HG2	1.97	0.46
1:A:643:ASN:OD1	1:A:646:GLN:NE2	2.48	0.46
1:B:508:LEU:HD21	1:B:698:ARG:HH12	1.80	0.46
2:B:902:POV:H22A	2:B:902:POV:H2	1.64	0.46
1:C:643:ASN:OD1	1:C:646:GLN:NE2	2.49	0.46
2:C:906:POV:H31G	2:C:906:POV:H21C	1.96	0.46
2:C:906:POV:H34	2:C:906:POV:H37A	1.72	0.46
1:D:569:PHE:HE2	2:D:905:POV:H37	1.80	0.46
1:B:635:LEU:HD21	1:B:642:LEU:HD13	1.98	0.46

Continued on next page...

Continued from previous page...

Atom-1	Atom-2	Interatomic distance (Å)	Clash overlap (Å)
1:C:508:LEU:HD21	1:C:698:ARG:HH12	1.80	0.46
1:A:149:ARG:HH12	1:A:153:ASP:H	1.63	0.46
1:C:522:PHE:HB2	2:C:904:POV:H14B	1.97	0.46
1:D:635:LEU:HD21	1:D:642:LEU:HD13	1.98	0.46
1:C:635:LEU:HD21	1:C:642:LEU:HD13	1.98	0.46
1:C:522:PHE:H	2:C:904:POV:H13A	1.81	0.46
2:C:903:POV:H36	2:C:903:POV:H33A	1.77	0.46
2:B:906:POV:H21C	2:B:906:POV:H31G	1.98	0.45
1:C:212:ALA:HA	1:C:248:ALA:H	1.81	0.45
1:D:584:LEU:HD12	2:D:903:POV:H3A	1.98	0.45
2:D:906:POV:H34	2:D:906:POV:H37A	1.68	0.45
1:A:212:ALA:HA	1:A:248:ALA:H	1.81	0.45
2:A:903:POV:H21G	2:A:903:POV:H31D	1.98	0.45
2:C:903:POV:H31D	2:C:904:POV:H39	1.97	0.45
2:C:905:POV:H35A	2:C:905:POV:H38A	1.70	0.45
1:A:361:LEU:HD23	1:A:424:PRO:HG2	1.97	0.45
1:D:508:LEU:HD21	1:D:698:ARG:HH12	1.80	0.45
1:A:508:LEU:HD21	1:A:698:ARG:HH12	1.80	0.45
2:B:905:POV:H312	2:B:905:POV:H39A	1.66	0.45
1:A:522:PHE:HB2	2:A:903:POV:H14B	1.97	0.45
2:B:902:POV:H22A	2:B:902:POV:H25	1.84	0.45
2:C:901:POV:H310	2:C:901:POV:H31D	1.70	0.45
2:A:901:POV:H25	2:A:901:POV:H22A	1.84	0.45
1:B:522:PHE:HB2	2:B:904:POV:H14B	1.97	0.45
1:C:309:ASP:OD2	1:C:311:LYS:NZ	2.44	0.45
1:D:212:ALA:HA	1:D:248:ALA:H	1.81	0.45
1:D:417:HIS:HB2	1:D:690:ARG:HB3	1.99	0.44
2:A:908:POV:H24A	2:A:908:POV:H27	1.82	0.44
1:B:417:HIS:HB2	1:B:690:ARG:HB3	1.99	0.44
1:C:127:VAL:HB	1:C:175:ALA:HB2	1.99	0.44
1:D:385:VAL:HG22	1:D:737:VAL:HG22	1.99	0.44
1:A:441:PHE:HD2	2:A:904:POV:H33A	1.83	0.44
1:B:753:PRO:O	1:C:213:TYR:OH	2.31	0.44
2:D:905:POV:H35A	2:D:905:POV:H38A	1.65	0.44
1:A:127:VAL:HB	1:A:175:ALA:HB2	1.99	0.44
1:B:385:VAL:HG22	1:B:737:VAL:HG22	1.99	0.44
2:A:906:POV:H31C	2:D:903:POV:H216	1.99	0.44
1:B:127:VAL:HB	1:B:175:ALA:HB2	1.99	0.44
1:C:585:HIS:ND1	2:C:903:POV:O13	2.37	0.44
1:A:417:HIS:HB2	1:A:690:ARG:HB3	1.99	0.43
1:C:417:HIS:HB2	1:C:690:ARG:HB3	1.99	0.43

Continued on next page...

Continued from previous page...

Atom-1	Atom-2	Interatomic distance (Å)	Clash overlap (Å)
1:C:483:GLN:NE2	2:C:906:POV:O32	2.51	0.43
2:C:907:POV:H36	2:C:907:POV:H39	1.83	0.43
2:D:902:POV:H38A	2:D:902:POV:H311	1.75	0.43
2:C:902:POV:H2	2:C:902:POV:H22A	1.65	0.43
2:C:903:POV:H39A	2:C:903:POV:H36A	1.80	0.43
2:C:907:POV:H34A	2:C:907:POV:H37A	1.80	0.43
2:C:909:POV:H24A	2:C:909:POV:H27	1.85	0.43
1:D:441:PHE:HD2	2:D:905:POV:H33A	1.83	0.43
2:D:901:POV:H15A	2:D:901:POV:H11	1.83	0.43
2:D:905:POV:H312	2:D:905:POV:H39A	1.81	0.43
2:A:902:POV:H33A	2:A:902:POV:H36	1.69	0.43
2:B:904:POV:H34	2:B:904:POV:H37	1.79	0.43
1:C:385:VAL:HG22	1:C:737:VAL:HG22	1.99	0.43
1:A:385:VAL:HG22	1:A:737:VAL:HG22	1.99	0.43
2:A:902:POV:H36A	2:A:902:POV:H39A	1.75	0.43
1:B:708:PRO:HD3	2:B:902:POV:H21A	2.00	0.43
2:B:907:POV:H37A	2:B:907:POV:H34A	1.81	0.43
2:C:902:POV:H211	2:C:902:POV:H28	1.78	0.43
2:B:902:POV:H210	2:B:902:POV:H37A	2.00	0.43
2:B:905:POV:H210	2:B:905:POV:H21C	1.76	0.43
2:B:908:POV:H24A	2:B:908:POV:H27	1.83	0.43
1:D:127:VAL:HB	1:D:175:ALA:HB2	1.99	0.43
1:B:517:LEU:HD13	1:B:584:LEU:HD11	2.01	0.43
2:B:902:POV:H38A	2:B:902:POV:H311	1.75	0.43
2:B:903:POV:H216	2:B:908:POV:H31C	2.00	0.43
2:C:905:POV:H31B	2:C:908:POV:H21J	2.01	0.43
2:A:901:POV:H22A	2:A:901:POV:H2	1.63	0.43
2:A:907:POV:H212	2:D:904:POV:H31F	2.01	0.43
1:D:595:ILE:HD11	2:D:903:POV:H21E	2.00	0.43
1:A:517:LEU:HD13	1:A:584:LEU:HD11	2.01	0.42
1:B:433:TRP:HD1	2:B:905:POV:H15B	1.84	0.42
1:A:653:LEU:HD23	2:A:907:POV:H22A	2.01	0.42
2:B:903:POV:H36	2:B:903:POV:H33A	1.72	0.42
2:B:905:POV:H316	2:C:901:POV:H213	1.92	0.42
2:D:907:POV:H39	2:D:907:POV:H36	1.87	0.42
1:A:213:TYR:OH	1:D:753:PRO:O	2.35	0.42
1:C:717:MET:SD	1:C:717:MET:N	2.92	0.42
2:C:908:POV:H15A	2:C:908:POV:H11	1.83	0.42
1:D:717:MET:SD	1:D:717:MET:N	2.92	0.42
2:A:901:POV:H14A	2:A:901:POV:H11	1.86	0.42
1:B:309:ASP:OD2	1:B:311:LYS:NZ	2.44	0.42

Continued on next page...

Continued from previous page...

Atom-1	Atom-2	Interatomic distance (Å)	Clash overlap (Å)
2:B:902:POV:H211	2:B:902:POV:H28	1.81	0.42
1:D:309:ASP:OD2	1:D:311:LYS:NZ	2.44	0.42
1:A:717:MET:SD	1:A:717:MET:N	2.93	0.42
1:C:491:LEU:HD13	1:C:537:VAL:HG21	2.01	0.42
1:C:599:LEU:HB3	2:C:901:POV:H27	2.02	0.42
1:B:717:MET:SD	1:B:717:MET:N	2.92	0.42
1:C:517:LEU:HD13	1:C:584:LEU:HD11	2.01	0.42
2:D:902:POV:H37A	2:D:902:POV:H210	2.02	0.42
2:D:902:POV:H28	2:D:902:POV:H211	1.79	0.42
2:A:904:POV:H312	2:A:904:POV:H39A	1.74	0.41
1:B:739:TRP:HB3	1:C:313:GLN:HG3	2.02	0.41
1:D:517:LEU:HD13	1:D:584:LEU:HD11	2.01	0.41
2:D:903:POV:H31B	2:D:904:POV:H36A	2.02	0.41
1:A:491:LEU:HD13	1:A:537:VAL:HG21	2.01	0.41
1:D:491:LEU:HD13	1:D:537:VAL:HG21	2.01	0.41
1:D:433:TRP:HD1	2:D:905:POV:H15B	1.86	0.41
2:B:905:POV:H11	2:B:905:POV:H15A	1.79	0.41
2:A:901:POV:H210	2:A:901:POV:H213	1.94	0.41
1:B:491:LEU:HD13	1:B:537:VAL:HG21	2.01	0.41
1:D:585:HIS:ND1	2:D:903:POV:O13	2.40	0.41
2:A:905:POV:H217	2:B:901:POV:H27A	2.02	0.41
2:B:902:POV:H210	2:B:902:POV:H213	1.94	0.41
2:B:905:POV:H310	2:B:905:POV:H37	1.54	0.41
2:D:903:POV:H13B	2:D:903:POV:H11	1.97	0.41
2:A:904:POV:H35A	2:A:904:POV:H38A	1.66	0.41
2:C:903:POV:H216	2:C:909:POV:H31C	2.02	0.41
1:A:684:VAL:HG12	1:A:688:SER:HB3	2.03	0.41
2:B:903:POV:H39A	2:B:903:POV:H36A	1.79	0.41
2:D:905:POV:H21C	2:D:905:POV:H210	1.80	0.41
2:A:904:POV:H11	2:A:904:POV:H15A	1.80	0.40
1:A:383:GLY:N	1:B:224:GLU:OE2	2.48	0.40
1:D:404:LEU:HD22	1:D:428:LEU:HD23	2.04	0.40
1:A:404:LEU:HD22	1:A:428:LEU:HD23	2.04	0.40
2:A:906:POV:H28	1:D:629:VAL:HG12	2.03	0.40
2:A:906:POV:H24A	2:A:906:POV:H27	1.81	0.40
1:B:392:LEU:HD11	1:B:732:LEU:HB2	2.03	0.40
1:B:684:VAL:HG12	1:B:688:SER:HB3	2.03	0.40
2:C:906:POV:H22A	2:C:906:POV:H2	1.95	0.40
1:D:684:VAL:HG12	1:D:688:SER:HB3	2.03	0.40

There are no symmetry-related clashes.

5.3 Torsion angles [i](#)

5.3.1 Protein backbone [i](#)

In the following table, the Percentiles column shows the percent Ramachandran outliers of the chain as a percentile score with respect to all PDB entries followed by that with respect to all EM entries.

The Analysed column shows the number of residues for which the backbone conformation was analysed, and the total number of residues.

Mol	Chain	Analysed	Favoured	Allowed	Outliers	Percentiles	
1	A	619/808 (77%)	597 (96%)	21 (3%)	1 (0%)	43	64
1	B	619/808 (77%)	598 (97%)	20 (3%)	1 (0%)	43	64
1	C	619/808 (77%)	598 (97%)	20 (3%)	1 (0%)	43	64
1	D	619/808 (77%)	598 (97%)	20 (3%)	1 (0%)	43	64
All	All	2476/3232 (77%)	2391 (97%)	81 (3%)	4 (0%)	44	64

All (4) Ramachandran outliers are listed below:

Mol	Chain	Res	Type
1	A	210	GLU
1	B	210	GLU
1	C	210	GLU
1	D	210	GLU

5.3.2 Protein sidechains [i](#)

In the following table, the Percentiles column shows the percent sidechain outliers of the chain as a percentile score with respect to all PDB entries followed by that with respect to all EM entries.

The Analysed column shows the number of residues for which the sidechain conformation was analysed, and the total number of residues.

Mol	Chain	Analysed	Rotameric	Outliers	Percentiles	
1	A	553/716 (77%)	552 (100%)	1 (0%)	87	95
1	B	553/716 (77%)	552 (100%)	1 (0%)	87	95
1	C	553/716 (77%)	552 (100%)	1 (0%)	87	95
1	D	553/716 (77%)	552 (100%)	1 (0%)	87	95
All	All	2212/2864 (77%)	2208 (100%)	4 (0%)	85	95

All (4) residues with a non-rotameric sidechain are listed below:

Mol	Chain	Res	Type
1	A	563	LEU
1	B	563	LEU
1	C	563	LEU
1	D	563	LEU

Sometimes sidechains can be flipped to improve hydrogen bonding and reduce clashes. All (54) such sidechains are listed below:

Mol	Chain	Res	Type
1	A	178	ASN
1	A	180	ASN
1	A	220	ASN
1	A	227	GLN
1	A	244	HIS
1	A	251	ASN
1	A	314	ASN
1	A	346	GLN
1	A	426	HIS
1	A	483	GLN
1	A	683	ASN
1	A	745	HIS
1	B	143	GLN
1	B	178	ASN
1	B	180	ASN
1	B	220	ASN
1	B	227	GLN
1	B	244	HIS
1	B	251	ASN
1	B	314	ASN
1	B	346	GLN
1	B	401	ASN
1	B	426	HIS
1	B	483	GLN
1	B	580	GLN
1	B	683	ASN
1	B	745	HIS
1	C	143	GLN
1	C	178	ASN
1	C	180	ASN
1	C	220	ASN
1	C	227	GLN
1	C	244	HIS

Continued on next page...

Continued from previous page...

Mol	Chain	Res	Type
1	C	251	ASN
1	C	314	ASN
1	C	346	GLN
1	C	401	ASN
1	C	483	GLN
1	C	580	GLN
1	C	683	ASN
1	D	143	GLN
1	D	178	ASN
1	D	180	ASN
1	D	220	ASN
1	D	227	GLN
1	D	244	HIS
1	D	251	ASN
1	D	314	ASN
1	D	346	GLN
1	D	426	HIS
1	D	483	GLN
1	D	580	GLN
1	D	683	ASN
1	D	745	HIS

5.3.3 RNA [i](#)

There are no RNA molecules in this entry.

5.4 Non-standard residues in protein, DNA, RNA chains [i](#)

There are no non-standard protein/DNA/RNA residues in this entry.

5.5 Carbohydrates [i](#)

There are no oligosaccharides in this entry.

5.6 Ligand geometry [i](#)

Of 34 ligands modelled in this entry, 2 are monoatomic - leaving 32 for Mogul analysis.

In the following table, the Counts columns list the number of bonds (or angles) for which Mogul statistics could be retrieved, the number of bonds (or angles) that are observed in the model and the number of bonds (or angles) that are defined in the Chemical Component Dictionary. The

Link column lists molecule types, if any, to which the group is linked. The Z score for a bond length (or angle) is the number of standard deviations the observed value is removed from the expected value. A bond length (or angle) with $|Z| > 2$ is considered an outlier worth inspection. RMSZ is the root-mean-square of all Z scores of the bond lengths (or angles).

Mol	Type	Chain	Res	Link	Bond lengths			Bond angles		
					Counts	RMSZ	# Z > 2	Counts	RMSZ	# Z > 2
2	POV	B	901	2	51,51,51	1.13	3 (5%)	57,59,59	0.94	3 (5%)
2	POV	A	904	2	51,51,51	1.14	3 (5%)	57,59,59	0.89	3 (5%)
2	POV	C	908	2	51,51,51	1.13	3 (5%)	57,59,59	0.94	3 (5%)
2	POV	C	906	-	51,51,51	1.14	3 (5%)	57,59,59	0.94	3 (5%)
2	POV	A	908	-	51,51,51	1.12	3 (5%)	57,59,59	0.87	3 (5%)
2	POV	B	902	-	51,51,51	1.14	3 (5%)	57,59,59	1.02	3 (5%)
2	POV	C	907	2	51,51,51	1.13	3 (5%)	57,59,59	0.89	3 (5%)
2	POV	C	909	-	51,51,51	1.12	3 (5%)	57,59,59	0.87	3 (5%)
2	POV	A	901	-	51,51,51	1.14	3 (5%)	57,59,59	1.02	4 (7%)
2	POV	C	904	-	51,51,51	1.14	4 (7%)	57,59,59	0.90	3 (5%)
2	POV	D	906	-	51,51,51	1.14	3 (5%)	57,59,59	0.94	3 (5%)
2	POV	D	907	2	51,51,51	1.13	3 (5%)	57,59,59	0.90	3 (5%)
2	POV	A	902	2	51,51,51	1.13	3 (5%)	57,59,59	0.92	3 (5%)
2	POV	D	902	-	51,51,51	1.14	3 (5%)	57,59,59	1.02	3 (5%)
2	POV	C	902	-	51,51,51	1.14	3 (5%)	57,59,59	1.02	3 (5%)
2	POV	A	905	-	51,51,51	1.14	3 (5%)	57,59,59	0.94	3 (5%)
2	POV	C	905	2	51,51,51	1.14	3 (5%)	57,59,59	0.89	4 (7%)
2	POV	D	901	2	51,51,51	1.13	3 (5%)	57,59,59	0.94	3 (5%)
2	POV	C	903	2	51,51,51	1.14	3 (5%)	57,59,59	0.94	3 (5%)
2	POV	C	901	2	51,51,51	1.12	3 (5%)	57,59,59	0.95	3 (5%)
2	POV	D	903	2	51,51,51	1.13	3 (5%)	57,59,59	0.94	3 (5%)
2	POV	B	908	-	51,51,51	1.11	3 (5%)	57,59,59	0.87	3 (5%)
2	POV	A	907	2	51,51,51	1.14	4 (7%)	57,59,59	0.88	3 (5%)
2	POV	B	904	-	51,51,51	1.15	4 (7%)	57,59,59	0.91	3 (5%)
2	POV	A	906	-	51,51,51	1.12	3 (5%)	57,59,59	0.86	3 (5%)
2	POV	B	906	-	51,51,51	1.14	3 (5%)	57,59,59	0.93	3 (5%)
2	POV	A	903	-	51,51,51	1.14	4 (7%)	57,59,59	0.91	3 (5%)
2	POV	B	905	2	51,51,51	1.15	3 (5%)	57,59,59	0.91	4 (7%)
2	POV	D	905	2	51,51,51	1.14	3 (5%)	57,59,59	0.89	3 (5%)
2	POV	B	907	2	51,51,51	1.13	3 (5%)	57,59,59	0.89	3 (5%)
2	POV	B	903	2	51,51,51	1.14	3 (5%)	57,59,59	0.92	3 (5%)

Mol	Type	Chain	Res	Link	Bond lengths			Bond angles		
					Counts	RMSZ	# Z > 2	Counts	RMSZ	# Z > 2
2	POV	D	904	-	51,51,51	1.15	4 (7%)	57,59,59	0.91	3 (5%)

In the following table, the Chirals column lists the number of chiral outliers, the number of chiral centers analysed, the number of these observed in the model and the number defined in the Chemical Component Dictionary. Similar counts are reported in the Torsion and Rings columns. '-' means no outliers of that kind were identified.

Mol	Type	Chain	Res	Link	Chirals	Torsions	Rings
2	POV	B	901	2	-	24/55/55/55	-
2	POV	A	904	2	-	27/55/55/55	-
2	POV	C	908	2	-	24/55/55/55	-
2	POV	C	906	-	-	27/55/55/55	-
2	POV	A	908	-	-	27/55/55/55	-
2	POV	B	902	-	-	23/55/55/55	-
2	POV	C	907	2	-	27/55/55/55	-
2	POV	C	909	-	-	27/55/55/55	-
2	POV	A	901	-	-	24/55/55/55	-
2	POV	C	904	-	-	32/55/55/55	-
2	POV	D	906	-	-	28/55/55/55	-
2	POV	D	907	2	-	28/55/55/55	-
2	POV	A	902	2	-	28/55/55/55	-
2	POV	D	902	-	-	24/55/55/55	-
2	POV	C	902	-	-	24/55/55/55	-
2	POV	A	905	-	-	23/55/55/55	-
2	POV	C	905	2	-	25/55/55/55	-
2	POV	D	901	2	-	24/55/55/55	-
2	POV	C	903	2	-	30/55/55/55	-
2	POV	C	901	2	-	29/55/55/55	-
2	POV	D	903	2	-	26/55/55/55	-
2	POV	B	908	-	-	28/55/55/55	-
2	POV	A	907	2	-	27/55/55/55	-
2	POV	B	904	-	-	31/55/55/55	-
2	POV	A	906	-	-	25/55/55/55	-
2	POV	B	906	-	-	27/55/55/55	-
2	POV	A	903	-	-	31/55/55/55	-
2	POV	B	905	2	-	26/55/55/55	-

Continued on next page...

Continued from previous page...

Mol	Type	Chain	Res	Link	Chirals	Torsions	Rings
2	POV	D	905	2	-	27/55/55/55	-
2	POV	B	907	2	-	25/55/55/55	-
2	POV	B	903	2	-	30/55/55/55	-
2	POV	D	904	-	-	29/55/55/55	-

All (101) bond length outliers are listed below:

Mol	Chain	Res	Type	Atoms	Z	Observed(Å)	Ideal(Å)
2	C	905	POV	O21-C21	3.13	1.43	1.34
2	A	906	POV	O21-C21	3.12	1.43	1.34
2	B	905	POV	O21-C21	3.11	1.43	1.34
2	C	909	POV	O21-C21	3.11	1.43	1.34
2	A	908	POV	O21-C21	3.10	1.43	1.34
2	A	904	POV	O21-C21	3.10	1.43	1.34
2	D	905	POV	O21-C21	3.09	1.43	1.34
2	A	907	POV	O21-C21	3.09	1.43	1.34
2	C	907	POV	O21-C21	3.07	1.43	1.34
2	B	907	POV	O21-C21	3.07	1.42	1.34
2	D	907	POV	O21-C21	3.06	1.42	1.34
2	B	908	POV	O21-C21	3.05	1.42	1.34
2	D	903	POV	O31-C31	3.03	1.42	1.33
2	A	901	POV	O31-C31	3.03	1.42	1.33
2	B	902	POV	O31-C31	3.02	1.42	1.33
2	C	903	POV	O31-C31	3.02	1.42	1.33
2	D	904	POV	O31-C31	3.01	1.42	1.33
2	C	904	POV	O31-C31	3.01	1.42	1.33
2	D	902	POV	O21-C21	3.01	1.42	1.34
2	B	904	POV	O31-C31	3.01	1.42	1.33
2	C	902	POV	O21-C21	3.00	1.42	1.34
2	A	901	POV	O21-C21	2.99	1.42	1.34
2	B	902	POV	O21-C21	2.99	1.42	1.34
2	D	901	POV	O31-C31	2.99	1.42	1.33
2	D	902	POV	O31-C31	2.98	1.42	1.33
2	D	907	POV	O31-C31	2.98	1.42	1.33
2	C	902	POV	O31-C31	2.98	1.42	1.33
2	B	903	POV	O31-C31	2.98	1.42	1.33
2	A	907	POV	O31-C31	2.97	1.42	1.33
2	B	906	POV	O31-C31	2.96	1.42	1.33
2	C	908	POV	O31-C31	2.96	1.42	1.33
2	C	901	POV	O31-C31	2.96	1.42	1.33
2	A	906	POV	O31-C31	2.95	1.42	1.33

Continued on next page...

Continued from previous page...

Mol	Chain	Res	Type	Atoms	Z	Observed(Å)	Ideal(Å)
2	B	905	POV	O31-C31	2.95	1.42	1.33
2	A	902	POV	O31-C31	2.95	1.41	1.33
2	A	903	POV	O31-C31	2.95	1.41	1.33
2	B	901	POV	O31-C31	2.94	1.41	1.33
2	D	906	POV	O31-C31	2.94	1.41	1.33
2	D	905	POV	O31-C31	2.94	1.41	1.33
2	A	905	POV	O31-C31	2.94	1.41	1.33
2	B	907	POV	O31-C31	2.94	1.41	1.33
2	A	908	POV	O31-C31	2.93	1.41	1.33
2	B	908	POV	O31-C31	2.93	1.41	1.33
2	C	906	POV	O31-C31	2.93	1.41	1.33
2	A	904	POV	O31-C31	2.93	1.41	1.33
2	C	907	POV	O31-C31	2.92	1.41	1.33
2	C	909	POV	O31-C31	2.92	1.41	1.33
2	B	906	POV	O21-C21	2.91	1.42	1.34
2	D	906	POV	O21-C21	2.90	1.42	1.34
2	A	903	POV	O21-C21	2.89	1.42	1.34
2	C	906	POV	O21-C21	2.89	1.42	1.34
2	C	905	POV	O31-C31	2.87	1.41	1.33
2	A	905	POV	O21-C21	2.87	1.42	1.34
2	B	904	POV	O21-C21	2.86	1.42	1.34
2	D	904	POV	O21-C21	2.84	1.42	1.34
2	C	904	POV	O21-C21	2.83	1.42	1.34
2	C	901	POV	O21-C21	2.83	1.42	1.34
2	C	908	POV	O21-C21	2.82	1.42	1.34
2	D	901	POV	O21-C21	2.81	1.42	1.34
2	C	903	POV	O21-C21	2.81	1.42	1.34
2	B	901	POV	O21-C21	2.80	1.42	1.34
2	B	903	POV	O21-C21	2.79	1.42	1.34
2	D	903	POV	O21-C21	2.78	1.42	1.34
2	A	902	POV	O21-C21	2.78	1.42	1.34
2	B	903	POV	O21-C2	-2.74	1.40	1.46
2	D	903	POV	O21-C2	-2.72	1.40	1.46
2	B	901	POV	O21-C2	-2.71	1.40	1.46
2	B	904	POV	O21-C2	-2.69	1.40	1.46
2	A	902	POV	O21-C2	-2.68	1.40	1.46
2	C	903	POV	O21-C2	-2.68	1.40	1.46
2	D	901	POV	O21-C2	-2.67	1.40	1.46
2	C	904	POV	O21-C2	-2.67	1.40	1.46
2	C	908	POV	O21-C2	-2.67	1.40	1.46
2	A	903	POV	O21-C2	-2.67	1.40	1.46
2	D	904	POV	O21-C2	-2.65	1.40	1.46

Continued on next page...

Continued from previous page...

Mol	Chain	Res	Type	Atoms	Z	Observed(Å)	Ideal(Å)
2	C	901	POV	O21-C2	-2.64	1.40	1.46
2	D	906	POV	O21-C2	-2.64	1.40	1.46
2	A	905	POV	O21-C2	-2.57	1.40	1.46
2	C	906	POV	O21-C2	-2.57	1.40	1.46
2	B	906	POV	O21-C2	-2.56	1.40	1.46
2	C	902	POV	O21-C2	-2.55	1.40	1.46
2	B	902	POV	O21-C2	-2.53	1.40	1.46
2	D	902	POV	O21-C2	-2.52	1.40	1.46
2	A	901	POV	O21-C2	-2.50	1.40	1.46
2	A	904	POV	O21-C2	-2.49	1.40	1.46
2	B	905	POV	O21-C2	-2.48	1.40	1.46
2	C	905	POV	O21-C2	-2.45	1.40	1.46
2	D	905	POV	O21-C2	-2.41	1.40	1.46
2	A	908	POV	O21-C2	-2.18	1.41	1.46
2	A	906	POV	O21-C2	-2.18	1.41	1.46
2	C	909	POV	O21-C2	-2.17	1.41	1.46
2	B	908	POV	O21-C2	-2.13	1.41	1.46
2	A	907	POV	O21-C2	-2.11	1.41	1.46
2	B	907	POV	O21-C2	-2.10	1.41	1.46
2	C	907	POV	O21-C2	-2.10	1.41	1.46
2	D	907	POV	O21-C2	-2.09	1.41	1.46
2	D	904	POV	P-O11	2.09	1.67	1.59
2	C	904	POV	P-O11	2.07	1.67	1.59
2	A	903	POV	P-O11	2.07	1.67	1.59
2	B	904	POV	P-O11	2.05	1.67	1.59
2	A	907	POV	P-O11	2.01	1.67	1.59

All (99) bond angle outliers are listed below:

Mol	Chain	Res	Type	Atoms	Z	Observed(°)	Ideal(°)
2	A	901	POV	O21-C21-C22	4.82	121.90	111.48
2	B	902	POV	O21-C21-C22	4.80	121.87	111.48
2	D	902	POV	O21-C21-C22	4.80	121.86	111.48
2	C	902	POV	O21-C21-C22	4.79	121.84	111.48
2	A	905	POV	O21-C21-C22	4.13	120.42	111.48
2	C	906	POV	O21-C21-C22	4.11	120.38	111.48
2	B	906	POV	O21-C21-C22	4.10	120.36	111.48
2	D	906	POV	O21-C21-C22	4.10	120.34	111.48
2	B	901	POV	O21-C21-C22	3.97	120.08	111.48
2	D	901	POV	O21-C21-C22	3.97	120.07	111.48
2	C	901	POV	O21-C21-C22	3.97	120.07	111.48
2	C	908	POV	O21-C21-C22	3.93	119.98	111.48

Continued on next page...

Continued from previous page...

Mol	Chain	Res	Type	Atoms	Z	Observed(°)	Ideal(°)
2	C	903	POV	O21-C21-C22	3.89	119.90	111.48
2	A	903	POV	O21-C21-C22	3.79	119.68	111.48
2	D	904	POV	O21-C21-C22	3.79	119.67	111.48
2	D	903	POV	O21-C21-C22	3.78	119.66	111.48
2	B	903	POV	O21-C21-C22	3.73	119.54	111.48
2	A	902	POV	O21-C21-C22	3.70	119.49	111.48
2	B	904	POV	O21-C21-C22	3.69	119.47	111.48
2	D	907	POV	O21-C21-C22	3.69	119.46	111.48
2	C	904	POV	O21-C21-C22	3.68	119.43	111.48
2	A	908	POV	O21-C21-C22	3.66	119.39	111.48
2	B	907	POV	O21-C21-C22	3.65	119.37	111.48
2	B	908	POV	O21-C21-C22	3.65	119.37	111.48
2	C	909	POV	O21-C21-C22	3.64	119.36	111.48
2	C	907	POV	O21-C21-C22	3.64	119.36	111.48
2	A	907	POV	O21-C21-C22	3.64	119.35	111.48
2	A	906	POV	O21-C21-C22	3.62	119.31	111.48
2	A	904	POV	O21-C21-C22	3.61	119.30	111.48
2	B	905	POV	O21-C21-C22	3.61	119.30	111.48
2	D	905	POV	O21-C21-C22	3.59	119.24	111.48
2	C	905	POV	O21-C21-C22	3.52	119.09	111.48
2	B	904	POV	O31-C31-C32	2.77	120.28	111.83
2	B	905	POV	O31-C31-C32	2.77	120.28	111.83
2	D	904	POV	O31-C31-C32	2.76	120.26	111.83
2	C	904	POV	O31-C31-C32	2.72	120.13	111.83
2	D	903	POV	O31-C31-C32	2.72	120.12	111.83
2	C	902	POV	O31-C31-C32	2.72	120.12	111.83
2	D	902	POV	O31-C31-C32	2.70	120.07	111.83
2	B	903	POV	O31-C31-C32	2.69	120.04	111.83
2	C	906	POV	O31-C31-C32	2.68	120.02	111.83
2	B	902	POV	O31-C31-C32	2.68	120.01	111.83
2	C	903	POV	O31-C31-C32	2.68	120.00	111.83
2	A	902	POV	O31-C31-C32	2.67	119.98	111.83
2	A	901	POV	O31-C31-C32	2.67	119.96	111.83
2	A	903	POV	O31-C31-C32	2.65	119.92	111.83
2	D	906	POV	O31-C31-C32	2.64	119.89	111.83
2	B	906	POV	O31-C31-C32	2.62	119.82	111.83
2	D	905	POV	O31-C31-C32	2.60	119.78	111.83
2	A	905	POV	O31-C31-C32	2.60	119.77	111.83
2	D	901	POV	O31-C31-C32	2.60	119.76	111.83
2	B	901	POV	O31-C31-C32	2.59	119.73	111.83
2	C	908	POV	O31-C31-C32	2.58	119.70	111.83
2	C	907	POV	O31-C31-C32	2.57	119.67	111.83

Continued on next page...

Continued from previous page...

Mol	Chain	Res	Type	Atoms	Z	Observed(°)	Ideal(°)
2	B	907	POV	O31-C31-C32	2.56	119.63	111.83
2	A	907	POV	O31-C31-C32	2.55	119.61	111.83
2	A	904	POV	O31-C31-C32	2.54	119.58	111.83
2	C	905	POV	O31-C31-C32	2.54	119.58	111.83
2	D	907	POV	O31-C31-C32	2.54	119.57	111.83
2	C	901	POV	O31-C31-C32	2.53	119.54	111.83
2	D	906	POV	C13-N-C12	2.47	119.74	109.91
2	C	906	POV	C13-N-C12	2.46	119.71	109.91
2	A	905	POV	C13-N-C12	2.45	119.65	109.91
2	B	906	POV	C13-N-C12	2.44	119.59	109.91
2	B	903	POV	C13-N-C12	2.38	119.36	109.91
2	C	903	POV	C13-N-C12	2.37	119.34	109.91
2	D	903	POV	C13-N-C12	2.37	119.32	109.91
2	A	902	POV	C13-N-C12	2.36	119.30	109.91
2	B	908	POV	C13-N-C12	2.36	119.28	109.91
2	C	909	POV	C13-N-C12	2.35	119.24	109.91
2	A	908	POV	C13-N-C12	2.34	119.21	109.91
2	A	906	POV	C13-N-C12	2.34	119.21	109.91
2	A	904	POV	C13-N-C12	2.33	119.17	109.91
2	B	905	POV	C13-N-C12	2.31	119.10	109.91
2	D	905	POV	C13-N-C12	2.29	119.03	109.91
2	B	908	POV	O31-C31-C32	2.28	118.77	111.83
2	B	907	POV	C13-N-C12	2.27	118.92	109.91
2	C	905	POV	C13-N-C12	2.26	118.91	109.91
2	A	908	POV	O31-C31-C32	2.25	118.70	111.83
2	C	905	POV	C3-C2-C1	-2.25	106.54	111.78
2	A	907	POV	C13-N-C12	2.24	118.83	109.91
2	C	907	POV	C13-N-C12	2.23	118.78	109.91
2	D	907	POV	C13-N-C12	2.21	118.70	109.91
2	C	904	POV	C13-N-C12	2.20	118.66	109.91
2	C	909	POV	O31-C31-C32	2.19	118.53	111.83
2	A	903	POV	C13-N-C12	2.19	118.62	109.91
2	D	902	POV	C13-N-C12	2.19	118.60	109.91
2	A	906	POV	O31-C31-C32	2.19	118.50	111.83
2	B	904	POV	C13-N-C12	2.18	118.56	109.91
2	B	902	POV	C13-N-C12	2.17	118.55	109.91
2	A	901	POV	C13-N-C12	2.16	118.51	109.91
2	D	904	POV	C13-N-C12	2.13	118.39	109.91
2	C	902	POV	C13-N-C12	2.12	118.33	109.91
2	C	908	POV	C13-N-C12	2.11	118.29	109.91
2	C	901	POV	C13-N-C12	2.10	118.28	109.91
2	B	901	POV	C13-N-C12	2.10	118.25	109.91

Continued on next page...

Continued from previous page...

Mol	Chain	Res	Type	Atoms	Z	Observed(°)	Ideal(°)
2	D	901	POV	C13-N-C12	2.09	118.23	109.91
2	A	901	POV	O21-C21-O22	-2.02	118.97	123.70
2	B	905	POV	C3-C2-C1	-2.00	107.11	111.78

There are no chirality outliers.

All (857) torsion outliers are listed below:

Mol	Chain	Res	Type	Atoms
2	A	901	POV	C1-O11-P-O12
2	A	901	POV	C1-O11-P-O13
2	A	901	POV	C1-O11-P-O14
2	A	901	POV	C22-C21-O21-C2
2	A	901	POV	O22-C21-O21-C2
2	A	902	POV	C1-O11-P-O12
2	A	902	POV	C1-O11-P-O13
2	A	902	POV	C1-O11-P-O14
2	A	902	POV	O12-C11-C12-N
2	A	903	POV	C11-O12-P-O11
2	A	903	POV	C11-O12-P-O13
2	A	903	POV	O12-C11-C12-N
2	A	904	POV	C1-O11-P-O13
2	A	904	POV	C1-O11-P-O14
2	A	904	POV	C11-O12-P-O11
2	A	904	POV	C11-O12-P-O14
2	A	904	POV	O12-C11-C12-N
2	A	905	POV	C11-O12-P-O14
2	A	905	POV	O22-C21-O21-C2
2	A	906	POV	C1-O11-P-O12
2	A	906	POV	C1-O11-P-O14
2	A	906	POV	C11-O12-P-O13
2	A	907	POV	C1-O11-P-O12
2	A	907	POV	O12-C11-C12-N
2	A	908	POV	C1-O11-P-O12
2	A	908	POV	C1-O11-P-O14
2	A	908	POV	C11-O12-P-O13
2	B	901	POV	C1-O11-P-O12
2	B	901	POV	C1-O11-P-O13
2	B	901	POV	C11-O12-P-O14
2	B	901	POV	O12-C11-C12-N
2	B	901	POV	O22-C21-O21-C2
2	B	902	POV	C1-O11-P-O12
2	B	902	POV	C1-O11-P-O13

Continued on next page...

Continued from previous page...

Mol	Chain	Res	Type	Atoms
2	B	902	POV	C1-O11-P-O14
2	B	902	POV	C22-C21-O21-C2
2	B	902	POV	O22-C21-O21-C2
2	B	903	POV	C1-O11-P-O12
2	B	903	POV	C1-O11-P-O13
2	B	903	POV	C1-O11-P-O14
2	B	903	POV	O12-C11-C12-N
2	B	904	POV	C11-O12-P-O11
2	B	904	POV	C11-O12-P-O13
2	B	904	POV	O12-C11-C12-N
2	B	905	POV	C1-O11-P-O13
2	B	905	POV	C1-O11-P-O14
2	B	905	POV	C11-O12-P-O11
2	B	905	POV	C11-O12-P-O14
2	B	905	POV	O12-C11-C12-N
2	B	906	POV	C11-O12-P-O14
2	B	906	POV	O22-C21-O21-C2
2	B	907	POV	C1-O11-P-O12
2	B	907	POV	O12-C11-C12-N
2	B	908	POV	C1-O11-P-O12
2	B	908	POV	C1-O11-P-O14
2	B	908	POV	C11-O12-P-O13
2	C	901	POV	C1-O11-P-O12
2	C	901	POV	C1-O11-P-O13
2	C	901	POV	C11-O12-P-O14
2	C	901	POV	O22-C21-O21-C2
2	C	902	POV	C1-O11-P-O12
2	C	902	POV	C1-O11-P-O13
2	C	902	POV	C1-O11-P-O14
2	C	902	POV	C22-C21-O21-C2
2	C	902	POV	O22-C21-O21-C2
2	C	903	POV	C1-O11-P-O12
2	C	903	POV	C1-O11-P-O13
2	C	903	POV	C1-O11-P-O14
2	C	903	POV	O12-C11-C12-N
2	C	904	POV	C11-O12-P-O11
2	C	904	POV	C11-O12-P-O13
2	C	904	POV	O12-C11-C12-N
2	C	905	POV	C1-O11-P-O13
2	C	905	POV	C11-O12-P-O11
2	C	905	POV	C11-O12-P-O14
2	C	905	POV	O12-C11-C12-N

Continued on next page...

Continued from previous page...

Mol	Chain	Res	Type	Atoms
2	C	906	POV	C11-O12-P-O14
2	C	906	POV	O22-C21-O21-C2
2	C	907	POV	C1-O11-P-O12
2	C	908	POV	C1-O11-P-O12
2	C	908	POV	C1-O11-P-O13
2	C	908	POV	C11-O12-P-O14
2	C	908	POV	O12-C11-C12-N
2	C	908	POV	O22-C21-O21-C2
2	C	909	POV	C1-O11-P-O12
2	C	909	POV	C1-O11-P-O14
2	C	909	POV	C11-O12-P-O13
2	D	901	POV	C1-O11-P-O12
2	D	901	POV	C1-O11-P-O13
2	D	901	POV	C11-O12-P-O14
2	D	901	POV	O12-C11-C12-N
2	D	901	POV	O22-C21-O21-C2
2	D	902	POV	C1-O11-P-O12
2	D	902	POV	C1-O11-P-O13
2	D	902	POV	C1-O11-P-O14
2	D	902	POV	C22-C21-O21-C2
2	D	902	POV	O22-C21-O21-C2
2	D	903	POV	C1-O11-P-O12
2	D	903	POV	C1-O11-P-O13
2	D	903	POV	C1-O11-P-O14
2	D	903	POV	O12-C11-C12-N
2	D	903	POV	O32-C31-O31-C3
2	D	904	POV	C11-O12-P-O11
2	D	904	POV	C11-O12-P-O13
2	D	904	POV	O12-C11-C12-N
2	D	905	POV	C1-O11-P-O13
2	D	905	POV	C1-O11-P-O14
2	D	905	POV	C11-O12-P-O11
2	D	905	POV	C11-O12-P-O14
2	D	905	POV	O12-C11-C12-N
2	D	906	POV	C11-O12-P-O14
2	D	906	POV	O22-C21-O21-C2
2	D	907	POV	C1-O11-P-O12
2	D	907	POV	O12-C11-C12-N
2	D	903	POV	C32-C31-O31-C3
2	A	902	POV	O32-C31-O31-C3
2	A	905	POV	O32-C31-O31-C3
2	B	903	POV	O32-C31-O31-C3

Continued on next page...

Continued from previous page...

Mol	Chain	Res	Type	Atoms
2	B	906	POV	O32-C31-O31-C3
2	C	903	POV	O32-C31-O31-C3
2	C	906	POV	O32-C31-O31-C3
2	D	906	POV	O32-C31-O31-C3
2	A	907	POV	O22-C21-O21-C2
2	A	908	POV	O22-C21-O21-C2
2	B	907	POV	O22-C21-O21-C2
2	B	908	POV	O22-C21-O21-C2
2	C	907	POV	O22-C21-O21-C2
2	D	907	POV	O22-C21-O21-C2
2	A	902	POV	C32-C31-O31-C3
2	B	903	POV	C32-C31-O31-C3
2	C	903	POV	C32-C31-O31-C3
2	A	905	POV	C22-C21-O21-C2
2	B	901	POV	C22-C21-O21-C2
2	B	906	POV	C22-C21-O21-C2
2	C	901	POV	C22-C21-O21-C2
2	C	906	POV	C22-C21-O21-C2
2	C	908	POV	C22-C21-O21-C2
2	D	901	POV	C22-C21-O21-C2
2	D	906	POV	C22-C21-O21-C2
2	D	907	POV	C22-C21-O21-C2
2	A	905	POV	C32-C31-O31-C3
2	B	906	POV	C32-C31-O31-C3
2	C	906	POV	C32-C31-O31-C3
2	D	906	POV	C32-C31-O31-C3
2	A	906	POV	O22-C21-O21-C2
2	B	905	POV	C37-C38-C39-C310
2	C	905	POV	C39-C310-C311-C312
2	B	902	POV	C32-C31-O31-C3
2	C	902	POV	C32-C31-O31-C3
2	D	902	POV	C32-C31-O31-C3
2	A	906	POV	C22-C21-O21-C2
2	A	907	POV	C22-C21-O21-C2
2	A	908	POV	C22-C21-O21-C2
2	B	907	POV	C22-C21-O21-C2
2	B	908	POV	C22-C21-O21-C2
2	C	907	POV	C22-C21-O21-C2
2	C	909	POV	C22-C21-O21-C2
2	B	902	POV	O32-C31-O31-C3
2	A	901	POV	C32-C31-O31-C3
2	C	909	POV	O22-C21-O21-C2

Continued on next page...

Continued from previous page...

Mol	Chain	Res	Type	Atoms
2	D	905	POV	C39-C310-C311-C312
2	A	902	POV	C39-C310-C311-C312
2	A	901	POV	O32-C31-O31-C3
2	D	902	POV	O32-C31-O31-C3
2	C	902	POV	O32-C31-O31-C3
2	A	904	POV	C39-C310-C311-C312
2	B	904	POV	C32-C31-O31-C3
2	C	904	POV	C32-C31-O31-C3
2	D	904	POV	C32-C31-O31-C3
2	C	908	POV	C31-C32-C33-C34
2	A	903	POV	C32-C31-O31-C3
2	B	901	POV	C31-C32-C33-C34
2	B	902	POV	C31-C32-C33-C34
2	B	904	POV	C31-C32-C33-C34
2	C	902	POV	C31-C32-C33-C34
2	A	904	POV	C32-C31-O31-C3
2	C	905	POV	C32-C31-O31-C3
2	D	905	POV	C32-C31-O31-C3
2	A	901	POV	C31-C32-C33-C34
2	C	901	POV	C31-C32-C33-C34
2	D	901	POV	C31-C32-C33-C34
2	D	902	POV	C31-C32-C33-C34
2	C	904	POV	C31-C32-C33-C34
2	B	901	POV	C21-C22-C23-C24
2	B	906	POV	C31-C32-C33-C34
2	C	901	POV	C21-C22-C23-C24
2	C	908	POV	C21-C22-C23-C24
2	D	901	POV	C21-C22-C23-C24
2	D	906	POV	C31-C32-C33-C34
2	C	904	POV	O32-C31-O31-C3
2	D	904	POV	O32-C31-O31-C3
2	A	903	POV	C31-C32-C33-C34
2	A	905	POV	C31-C32-C33-C34
2	C	906	POV	C31-C32-C33-C34
2	A	903	POV	C34-C35-C36-C37
2	B	903	POV	C39-C310-C311-C312
2	B	905	POV	C39-C310-C311-C312
2	D	905	POV	C35-C36-C37-C38
2	C	903	POV	C39-C310-C311-C312
2	C	905	POV	C35-C36-C37-C38
2	B	904	POV	O32-C31-O31-C3
2	A	902	POV	C21-C22-C23-C24

Continued on next page...

Continued from previous page...

Mol	Chain	Res	Type	Atoms
2	D	903	POV	C21-C22-C23-C24
2	A	903	POV	O32-C31-O31-C3
2	A	904	POV	O32-C31-O31-C3
2	C	905	POV	O32-C31-O31-C3
2	C	907	POV	C32-C31-O31-C3
2	D	905	POV	O32-C31-O31-C3
2	C	903	POV	C21-C22-C23-C24
2	A	907	POV	C32-C31-O31-C3
2	B	905	POV	C32-C31-O31-C3
2	B	907	POV	C32-C31-O31-C3
2	B	905	POV	C33-C34-C35-C36
2	C	905	POV	C33-C34-C35-C36
2	C	909	POV	C39-C310-C311-C312
2	D	905	POV	C33-C34-C35-C36
2	A	904	POV	C35-C36-C37-C38
2	A	906	POV	C39-C310-C311-C312
2	D	907	POV	C32-C31-O31-C3
2	D	901	POV	C33-C34-C35-C36
2	A	904	POV	C33-C34-C35-C36
2	B	905	POV	C210-C211-C212-C213
2	D	905	POV	C210-C211-C212-C213
2	C	902	POV	C311-C310-C39-C38
2	C	903	POV	C33-C34-C35-C36
2	A	908	POV	C39-C310-C311-C312
2	B	903	POV	C33-C34-C35-C36
2	A	902	POV	C33-C34-C35-C36
2	C	908	POV	C33-C34-C35-C36
2	B	905	POV	C35-C36-C37-C38
2	C	903	POV	C214-C215-C216-C217
2	A	908	POV	C22-C23-C24-C25
2	B	901	POV	C212-C213-C214-C215
2	B	908	POV	C22-C23-C24-C25
2	D	906	POV	C37-C38-C39-C310
2	A	903	POV	C36-C37-C38-C39
2	A	907	POV	C25-C26-C27-C28
2	D	901	POV	C212-C213-C214-C215
2	C	907	POV	O32-C31-O31-C3
2	A	902	POV	C34-C35-C36-C37
2	A	906	POV	C22-C23-C24-C25
2	A	906	POV	C33-C34-C35-C36
2	B	905	POV	C311-C310-C39-C38
2	C	906	POV	C33-C34-C35-C36

Continued on next page...

Continued from previous page...

Mol	Chain	Res	Type	Atoms
2	C	908	POV	C212-C213-C214-C215
2	C	909	POV	C212-C213-C214-C215
2	D	903	POV	C311-C310-C39-C38
2	D	903	POV	C214-C215-C216-C217
2	A	908	POV	C212-C213-C214-C215
2	B	906	POV	C37-C38-C39-C310
2	C	906	POV	C23-C24-C25-C26
2	C	907	POV	C212-C213-C214-C215
2	D	905	POV	C23-C24-C25-C26
2	B	903	POV	C21-C22-C23-C24
2	A	905	POV	C311-C310-C39-C38
2	B	905	POV	C23-C24-C25-C26
2	A	904	POV	C210-C211-C212-C213
2	B	907	POV	C210-C211-C212-C213
2	C	905	POV	C210-C211-C212-C213
2	B	905	POV	O32-C31-O31-C3
2	A	906	POV	C212-C213-C214-C215
2	A	908	POV	C33-C34-C35-C36
2	B	903	POV	C214-C215-C216-C217
2	C	909	POV	C22-C23-C24-C25
2	A	904	POV	C23-C24-C25-C26
2	C	901	POV	C214-C215-C216-C217
2	C	909	POV	C33-C34-C35-C36
2	A	905	POV	C23-C24-C25-C26
2	B	908	POV	C39-C310-C311-C312
2	B	908	POV	C33-C34-C35-C36
2	C	901	POV	C312-C313-C314-C315
2	C	905	POV	C311-C310-C39-C38
2	C	905	POV	C311-C312-C313-C314
2	D	906	POV	C23-C24-C25-C26
2	D	906	POV	C33-C34-C35-C36
2	A	907	POV	O32-C31-O31-C3
2	B	907	POV	O32-C31-O31-C3
2	A	903	POV	C39-C310-C311-C312
2	B	903	POV	C311-C310-C39-C38
2	C	901	POV	C311-C312-C313-C314
2	C	905	POV	C23-C24-C25-C26
2	D	904	POV	C214-C215-C216-C217
2	A	902	POV	C214-C215-C216-C217
2	B	906	POV	C23-C24-C25-C26
2	C	903	POV	C311-C310-C39-C38
2	A	907	POV	C31-C32-C33-C34

Continued on next page...

Continued from previous page...

Mol	Chain	Res	Type	Atoms
2	A	901	POV	C24-C25-C26-C27
2	C	907	POV	C311-C310-C39-C38
2	B	902	POV	C311-C310-C39-C38
2	C	904	POV	C214-C215-C216-C217
2	C	907	POV	C32-C33-C34-C35
2	D	905	POV	C311-C312-C313-C314
2	D	907	POV	C311-C310-C39-C38
2	A	907	POV	C311-C310-C39-C38
2	B	906	POV	C33-C34-C35-C36
2	B	907	POV	C32-C33-C34-C35
2	A	904	POV	C311-C310-C39-C38
2	D	902	POV	C311-C310-C39-C38
2	D	905	POV	C311-C310-C39-C38
2	D	907	POV	C212-C213-C214-C215
2	D	907	POV	C31-C32-C33-C34
2	A	905	POV	C39-C310-C311-C312
2	A	907	POV	C32-C33-C34-C35
2	B	903	POV	C34-C35-C36-C37
2	B	904	POV	C36-C37-C38-C39
2	B	905	POV	C34-C35-C36-C37
2	B	907	POV	C311-C310-C39-C38
2	B	907	POV	C214-C215-C216-C217
2	B	908	POV	C212-C213-C214-C215
2	D	907	POV	C32-C33-C34-C35
2	D	907	POV	O32-C31-O31-C3
2	A	902	POV	C311-C310-C39-C38
2	A	903	POV	C214-C215-C216-C217
2	C	906	POV	C37-C38-C39-C310
2	B	903	POV	C25-C26-C27-C28
2	B	904	POV	C213-C214-C215-C216
2	C	901	POV	C311-C310-C39-C38
2	D	904	POV	C213-C214-C215-C216
2	B	907	POV	C31-C32-C33-C34
2	C	907	POV	C31-C32-C33-C34
2	A	907	POV	C213-C214-C215-C216
2	D	904	POV	C35-C36-C37-C38
2	A	903	POV	C26-C27-C28-C29
2	C	903	POV	C210-C211-C212-C213
2	C	904	POV	C210-C211-C212-C213
2	C	907	POV	C210-C211-C212-C213
2	D	903	POV	C210-C211-C212-C213
2	B	904	POV	C39-C310-C311-C312

Continued on next page...

Continued from previous page...

Mol	Chain	Res	Type	Atoms
2	C	901	POV	C211-C212-C213-C214
2	C	904	POV	C39-C310-C311-C312
2	C	906	POV	C39-C310-C311-C312
2	B	906	POV	C39-C310-C311-C312
2	C	908	POV	C32-C33-C34-C35
2	D	901	POV	C32-C33-C34-C35
2	D	902	POV	C24-C25-C26-C27
2	A	901	POV	C311-C310-C39-C38
2	A	901	POV	C37-C38-C39-C310
2	A	902	POV	C25-C26-C27-C28
2	C	903	POV	C25-C26-C27-C28
2	B	901	POV	C32-C33-C34-C35
2	C	903	POV	C34-C35-C36-C37
2	C	904	POV	C36-C37-C38-C39
2	D	904	POV	C37-C38-C39-C310
2	D	907	POV	C34-C35-C36-C37
2	A	903	POV	C213-C214-C215-C216
2	B	902	POV	C37-C38-C39-C310
2	C	901	POV	C32-C33-C34-C35
2	C	904	POV	C213-C214-C215-C216
2	D	902	POV	C37-C38-C39-C310
2	D	906	POV	C39-C310-C311-C312
2	A	905	POV	C213-C214-C215-C216
2	C	902	POV	C37-C38-C39-C310
2	A	903	POV	C33-C34-C35-C36
2	C	902	POV	C24-C25-C26-C27
2	D	903	POV	C25-C26-C27-C28
2	D	907	POV	C25-C26-C27-C28
2	C	907	POV	C214-C215-C216-C217
2	C	907	POV	C25-C26-C27-C28
2	C	908	POV	C311-C310-C39-C38
2	D	907	POV	C214-C215-C216-C217
2	A	903	POV	C22-C21-O21-C2
2	B	904	POV	C214-C215-C216-C217
2	A	901	POV	C33-C34-C35-C36
2	A	904	POV	C311-C312-C313-C314
2	A	905	POV	C211-C212-C213-C214
2	B	901	POV	C311-C312-C313-C314
2	D	902	POV	C211-C212-C213-C214
2	A	906	POV	C210-C211-C212-C213
2	A	908	POV	C210-C211-C212-C213
2	B	904	POV	C26-C27-C28-C29

Continued on next page...

Continued from previous page...

Mol	Chain	Res	Type	Atoms
2	B	908	POV	C210-C211-C212-C213
2	C	904	POV	C26-C27-C28-C29
2	D	904	POV	C26-C27-C28-C29
2	B	906	POV	C34-C35-C36-C37
2	A	907	POV	C34-C35-C36-C37
2	A	902	POV	C24-C25-C26-C27
2	A	905	POV	C311-C312-C313-C314
2	D	903	POV	C33-C34-C35-C36
2	D	903	POV	C35-C36-C37-C38
2	C	904	POV	C37-C38-C39-C310
2	B	907	POV	C25-C26-C27-C28
2	C	906	POV	C212-C213-C214-C215
2	D	901	POV	C311-C312-C313-C314
2	B	903	POV	C24-C25-C26-C27
2	C	903	POV	C32-C33-C34-C35
2	B	903	POV	C22-C21-O21-C2
2	B	905	POV	C212-C213-C214-C215
2	B	901	POV	C311-C310-C39-C38
2	B	902	POV	C211-C212-C213-C214
2	A	902	POV	C210-C211-C212-C213
2	A	906	POV	O21-C2-C3-O31
2	A	908	POV	O21-C2-C3-O31
2	B	904	POV	C210-C211-C212-C213
2	B	908	POV	O21-C2-C3-O31
2	C	909	POV	O21-C2-C3-O31
2	C	909	POV	C210-C211-C212-C213
2	D	906	POV	C26-C27-C28-C29
2	B	904	POV	C37-C38-C39-C310
2	B	906	POV	C212-C213-C214-C215
2	C	908	POV	C311-C312-C313-C314
2	D	907	POV	C39-C310-C311-C312
2	C	902	POV	C211-C212-C213-C214
2	C	903	POV	C24-C25-C26-C27
2	C	908	POV	C312-C313-C314-C315
2	A	907	POV	C29-C210-C211-C212
2	B	902	POV	C24-C25-C26-C27
2	C	905	POV	C312-C313-C314-C315
2	C	907	POV	C39-C310-C311-C312
2	D	906	POV	C34-C35-C36-C37
2	A	903	POV	C312-C313-C314-C315
2	A	901	POV	C211-C212-C213-C214
2	A	903	POV	C35-C36-C37-C38

Continued on next page...

Continued from previous page...

Mol	Chain	Res	Type	Atoms
2	A	907	POV	C23-C24-C25-C26
2	D	903	POV	C37-C38-C39-C310
2	D	906	POV	C213-C214-C215-C216
2	A	907	POV	C39-C310-C311-C312
2	B	907	POV	C39-C310-C311-C312
2	A	904	POV	C312-C313-C314-C315
2	B	904	POV	C22-C21-O21-C2
2	B	903	POV	C32-C33-C34-C35
2	C	904	POV	C33-C34-C35-C36
2	C	906	POV	C35-C36-C37-C38
2	D	901	POV	C312-C313-C314-C315
2	D	901	POV	C311-C310-C39-C38
2	D	906	POV	C212-C213-C214-C215
2	A	903	POV	C210-C211-C212-C213
2	A	905	POV	C210-C211-C212-C213
2	A	905	POV	C26-C27-C28-C29
2	A	907	POV	C210-C211-C212-C213
2	C	906	POV	C210-C211-C212-C213
2	C	906	POV	C26-C27-C28-C29
2	D	901	POV	C210-C211-C212-C213
2	D	904	POV	C210-C211-C212-C213
2	B	903	POV	C36-C37-C38-C39
2	B	904	POV	C312-C313-C314-C315
2	C	904	POV	C312-C313-C314-C315
2	B	906	POV	C35-C36-C37-C38
2	B	907	POV	C212-C213-C214-C215
2	D	905	POV	C312-C313-C314-C315
2	C	903	POV	C22-C21-O21-C2
2	D	906	POV	C211-C212-C213-C214
2	C	906	POV	C213-C214-C215-C216
2	B	901	POV	C32-C31-O31-C3
2	B	906	POV	C213-C214-C215-C216
2	C	901	POV	C310-C311-C312-C313
2	A	903	POV	O22-C21-O21-C2
2	A	902	POV	C32-C33-C34-C35
2	A	902	POV	C1-C2-C3-O31
2	A	904	POV	C1-C2-C3-O31
2	A	906	POV	C1-C2-C3-O31
2	A	908	POV	C1-C2-C3-O31
2	B	901	POV	C1-C2-C3-O31
2	B	905	POV	C1-C2-C3-O31
2	B	908	POV	C1-C2-C3-O31

Continued on next page...

Continued from previous page...

Mol	Chain	Res	Type	Atoms
2	C	901	POV	C1-C2-C3-O31
2	C	903	POV	C1-C2-C3-O31
2	C	907	POV	C1-C2-C3-O31
2	C	908	POV	C1-C2-C3-O31
2	C	909	POV	C1-C2-C3-O31
2	D	901	POV	C1-C2-C3-O31
2	D	903	POV	C1-C2-C3-O31
2	B	903	POV	C210-C211-C212-C213
2	C	901	POV	C210-C211-C212-C213
2	D	907	POV	C210-C211-C212-C213
2	B	901	POV	C33-C34-C35-C36
2	C	906	POV	C211-C212-C213-C214
2	C	908	POV	C32-C31-O31-C3
2	B	905	POV	C36-C37-C38-C39
2	B	907	POV	C34-C35-C36-C37
2	B	906	POV	C211-C212-C213-C214
2	A	902	POV	C36-C37-C38-C39
2	B	904	POV	C33-C34-C35-C36
2	D	901	POV	C32-C31-O31-C3
2	A	907	POV	C1-C2-O21-C21
2	B	907	POV	C1-C2-O21-C21
2	D	907	POV	C1-C2-O21-C21
2	C	906	POV	C34-C35-C36-C37
2	A	907	POV	C26-C27-C28-C29
2	B	901	POV	C210-C211-C212-C213
2	B	906	POV	C210-C211-C212-C213
2	B	906	POV	C26-C27-C28-C29
2	C	908	POV	C210-C211-C212-C213
2	D	906	POV	C210-C211-C212-C213
2	B	901	POV	C312-C313-C314-C315
2	B	908	POV	C214-C215-C216-C217
2	A	903	POV	O11-C1-C2-O21
2	B	904	POV	O11-C1-C2-O21
2	C	904	POV	O11-C1-C2-O21
2	B	902	POV	C33-C34-C35-C36
2	B	906	POV	C311-C310-C39-C38
2	C	901	POV	C32-C31-O31-C3
2	C	902	POV	C313-C314-C315-C316
2	A	906	POV	C214-C215-C216-C217
2	C	904	POV	C35-C36-C37-C38
2	D	907	POV	C24-C25-C26-C27
2	B	901	POV	C215-C216-C217-C218

Continued on next page...

Continued from previous page...

Mol	Chain	Res	Type	Atoms
2	D	902	POV	C33-C34-C35-C36
2	D	904	POV	C24-C25-C26-C27
2	A	903	POV	C24-C25-C26-C27
2	A	908	POV	C214-C215-C216-C217
2	B	904	POV	C24-C25-C26-C27
2	C	904	POV	C24-C25-C26-C27
2	B	901	POV	O32-C31-O31-C3
2	A	901	POV	C312-C313-C314-C315
2	C	909	POV	C214-C215-C216-C217
2	C	908	POV	O21-C2-C3-O31
2	C	908	POV	C215-C216-C217-C218
2	A	906	POV	C24-C25-C26-C27
2	B	902	POV	C313-C314-C315-C316
2	C	905	POV	C313-C314-C315-C316
2	A	906	POV	C25-C26-C27-C28
2	D	901	POV	C215-C216-C217-C218
2	D	904	POV	C22-C21-O21-C2
2	D	902	POV	C312-C313-C314-C315
2	C	907	POV	C34-C35-C36-C37
2	A	901	POV	C313-C314-C315-C316
2	A	904	POV	C313-C314-C315-C316
2	A	905	POV	C313-C314-C315-C316
2	D	902	POV	C313-C314-C315-C316
2	D	905	POV	C313-C314-C315-C316
2	B	904	POV	C35-C36-C37-C38
2	D	903	POV	C24-C25-C26-C27
2	D	906	POV	C311-C310-C39-C38
2	C	903	POV	C36-C37-C38-C39
2	C	905	POV	C212-C213-C214-C215
2	C	908	POV	O32-C31-O31-C3
2	A	908	POV	C24-C25-C26-C27
2	C	901	POV	C33-C34-C35-C36
2	A	905	POV	C212-C213-C214-C215
2	D	904	POV	C25-C26-C27-C28
2	B	904	POV	C25-C26-C27-C28
2	C	908	POV	C313-C314-C315-C316
2	D	901	POV	C313-C314-C315-C316
2	A	902	POV	O11-C1-C2-C3
2	D	903	POV	O11-C1-C2-C3
2	A	904	POV	C212-C213-C214-C215
2	B	901	POV	C313-C314-C315-C316
2	D	905	POV	C212-C213-C214-C215

Continued on next page...

Continued from previous page...

Mol	Chain	Res	Type	Atoms
2	D	906	POV	C35-C36-C37-C38
2	B	904	POV	O22-C21-O21-C2
2	A	907	POV	C211-C212-C213-C214
2	B	908	POV	C24-C25-C26-C27
2	A	908	POV	C25-C26-C27-C28
2	D	901	POV	O32-C31-O31-C3
2	C	904	POV	C25-C26-C27-C28
2	C	906	POV	C311-C310-C39-C38
2	A	906	POV	C311-C312-C313-C314
2	B	908	POV	C25-C26-C27-C28
2	C	907	POV	C24-C25-C26-C27
2	A	901	POV	C1-C2-C3-O31
2	A	907	POV	C1-C2-C3-O31
2	B	902	POV	C1-C2-C3-O31
2	B	907	POV	C1-C2-C3-O31
2	C	902	POV	C1-C2-C3-O31
2	D	902	POV	C1-C2-C3-O31
2	D	905	POV	C1-C2-C3-O31
2	D	907	POV	C1-C2-C3-O31
2	C	902	POV	C39-C310-C311-C312
2	B	904	POV	C22-C23-C24-C25
2	B	902	POV	C312-C313-C314-C315
2	D	904	POV	O11-C1-C2-O21
2	C	902	POV	C33-C34-C35-C36
2	A	903	POV	C22-C23-C24-C25
2	A	904	POV	O21-C2-C3-O31
2	B	901	POV	O21-C2-C3-O31
2	B	902	POV	O21-C2-C3-O31
2	B	903	POV	O21-C2-C3-O31
2	B	905	POV	O21-C2-C3-O31
2	C	901	POV	O21-C2-C3-O31
2	C	902	POV	O21-C2-C3-O31
2	C	903	POV	O21-C2-C3-O31
2	C	904	POV	O21-C2-C3-O31
2	C	905	POV	O21-C2-C3-O31
2	D	901	POV	O21-C2-C3-O31
2	D	904	POV	O21-C2-C3-O31
2	D	905	POV	O21-C2-C3-O31
2	A	906	POV	C34-C35-C36-C37
2	B	903	POV	O22-C21-O21-C2
2	C	901	POV	O32-C31-O31-C3
2	A	904	POV	C32-C33-C34-C35

Continued on next page...

Continued from previous page...

Mol	Chain	Res	Type	Atoms
2	A	907	POV	C214-C215-C216-C217
2	C	904	POV	C22-C23-C24-C25
2	C	906	POV	C311-C312-C313-C314
2	A	902	POV	C22-C21-O21-C2
2	C	901	POV	C213-C214-C215-C216
2	D	904	POV	C22-C23-C24-C25
2	A	903	POV	O11-C1-C2-C3
2	A	908	POV	O11-C1-C2-C3
2	B	903	POV	O11-C1-C2-C3
2	B	904	POV	O11-C1-C2-C3
2	B	908	POV	O11-C1-C2-C3
2	C	903	POV	O11-C1-C2-C3
2	C	904	POV	O11-C1-C2-C3
2	D	904	POV	O11-C1-C2-C3
2	A	902	POV	C310-C311-C312-C313
2	B	907	POV	C24-C25-C26-C27
2	C	903	POV	O22-C21-O21-C2
2	D	904	POV	O22-C21-O21-C2
2	D	901	POV	C35-C36-C37-C38
2	C	909	POV	C25-C26-C27-C28
2	D	905	POV	C32-C33-C34-C35
2	A	906	POV	C1-C2-O21-C21
2	A	908	POV	C1-C2-O21-C21
2	B	908	POV	C1-C2-O21-C21
2	C	907	POV	C1-C2-O21-C21
2	C	909	POV	C1-C2-O21-C21
2	B	903	POV	O11-C1-C2-O21
2	C	903	POV	O11-C1-C2-O21
2	C	909	POV	C24-C25-C26-C27
2	C	909	POV	C34-C35-C36-C37
2	B	903	POV	C1-C2-C3-O31
2	C	905	POV	C1-C2-C3-O31
2	C	904	POV	C22-C21-O21-C2
2	B	908	POV	C35-C36-C37-C38
2	A	905	POV	C12-C11-O12-P
2	B	906	POV	C12-C11-O12-P
2	C	906	POV	C12-C11-O12-P
2	D	906	POV	C12-C11-O12-P
2	A	901	POV	O21-C2-C3-O31
2	A	902	POV	O21-C2-C3-O31
2	A	907	POV	O21-C2-C3-O31
2	B	904	POV	O21-C2-C3-O31

Continued on next page...

Continued from previous page...

Mol	Chain	Res	Type	Atoms
2	B	907	POV	O21-C2-C3-O31
2	D	902	POV	O21-C2-C3-O31
2	D	903	POV	O21-C2-C3-O31
2	A	903	POV	C37-C38-C39-C310
2	D	906	POV	C311-C312-C313-C314
2	B	906	POV	C311-C312-C313-C314
2	D	904	POV	C312-C313-C314-C315
2	B	902	POV	C39-C310-C311-C312
2	A	901	POV	O12-C11-C12-N
2	B	902	POV	O12-C11-C12-N
2	C	901	POV	O12-C11-C12-N
2	C	902	POV	O12-C11-C12-N
2	C	907	POV	O12-C11-C12-N
2	D	902	POV	O12-C11-C12-N
2	C	907	POV	C2-C3-O31-C31
2	C	904	POV	O22-C21-O21-C2
2	A	901	POV	C215-C216-C217-C218
2	D	902	POV	C215-C216-C217-C218
2	A	904	POV	C37-C38-C39-C310
2	D	904	POV	C31-C32-C33-C34
2	C	905	POV	C32-C33-C34-C35
2	B	905	POV	C313-C314-C315-C316
2	A	903	POV	C25-C26-C27-C28
2	C	909	POV	C35-C36-C37-C38
2	D	902	POV	C39-C310-C311-C312
2	A	906	POV	C35-C36-C37-C38
2	A	906	POV	O11-C1-C2-C3
2	C	909	POV	O11-C1-C2-C3
2	A	902	POV	O22-C21-O21-C2
2	C	902	POV	C312-C313-C314-C315
2	D	903	POV	C211-C212-C213-C214
2	D	904	POV	C32-C33-C34-C35
2	B	903	POV	C29-C210-C211-C212
2	C	903	POV	C29-C210-C211-C212
2	B	902	POV	C215-C216-C217-C218
2	A	902	POV	O11-C1-C2-O21
2	D	903	POV	O11-C1-C2-O21
2	D	905	POV	C37-C38-C39-C310
2	A	908	POV	C35-C36-C37-C38
2	B	905	POV	C311-C312-C313-C314
2	B	907	POV	C37-C38-C39-C310
2	A	908	POV	C34-C35-C36-C37

Continued on next page...

Continued from previous page...

Mol	Chain	Res	Type	Atoms
2	C	901	POV	C313-C314-C315-C316
2	C	905	POV	C37-C38-C39-C310
2	A	901	POV	C39-C310-C311-C312
2	C	907	POV	O21-C2-C3-O31
2	D	907	POV	O21-C2-C3-O31
2	A	908	POV	C313-C314-C315-C316
2	C	902	POV	C215-C216-C217-C218
2	B	907	POV	C2-C3-O31-C31
2	B	903	POV	C312-C313-C314-C315
2	C	901	POV	C37-C38-C39-C310
2	A	903	POV	C1-O11-P-O14
2	A	903	POV	C11-O12-P-O14
2	A	904	POV	C1-O11-P-O12
2	A	905	POV	C1-O11-P-O13
2	A	906	POV	C11-O12-P-O11
2	A	908	POV	C11-O12-P-O11
2	A	908	POV	C11-O12-P-O14
2	B	904	POV	C11-O12-P-O14
2	B	905	POV	C1-O11-P-O12
2	B	906	POV	C1-O11-P-O13
2	B	908	POV	C11-O12-P-O11
2	B	908	POV	C11-O12-P-O14
2	C	904	POV	C11-O12-P-O14
2	C	905	POV	C1-O11-P-O12
2	C	905	POV	C1-O11-P-O14
2	C	906	POV	C1-O11-P-O13
2	C	906	POV	C11-O12-P-O11
2	C	909	POV	C11-O12-P-O11
2	C	909	POV	C11-O12-P-O14
2	D	904	POV	C11-O12-P-O14
2	D	905	POV	C1-O11-P-O12
2	D	906	POV	C1-O11-P-O13
2	D	906	POV	C11-O12-P-O11
2	D	907	POV	C1-O11-P-O13
2	D	905	POV	C36-C37-C38-C39
2	C	909	POV	C311-C312-C313-C314
2	B	908	POV	C313-C314-C315-C316
2	B	908	POV	C311-C312-C313-C314
2	B	906	POV	C29-C210-C211-C212
2	A	904	POV	C36-C37-C38-C39
2	B	903	POV	C27-C28-C29-C210
2	C	906	POV	C29-C210-C211-C212

Continued on next page...

Continued from previous page...

Mol	Chain	Res	Type	Atoms
2	D	906	POV	C29-C210-C211-C212
2	B	904	POV	C34-C35-C36-C37
2	B	908	POV	C34-C35-C36-C37
2	A	907	POV	C2-C3-O31-C31
2	B	907	POV	C313-C314-C315-C316
2	C	906	POV	C313-C314-C315-C316
2	D	903	POV	O22-C21-O21-C2
2	A	907	POV	C313-C314-C315-C316
2	C	903	POV	C310-C311-C312-C313
2	D	907	POV	C313-C314-C315-C316
2	A	907	POV	C37-C38-C39-C310
2	C	907	POV	C313-C314-C315-C316
2	D	903	POV	C22-C21-O21-C2
2	B	908	POV	C21-C22-C23-C24
2	A	902	POV	C211-C212-C213-C214
2	B	901	POV	C26-C27-C28-C29
2	C	908	POV	C22-C23-C24-C25
2	C	901	POV	C35-C36-C37-C38
2	A	903	POV	C23-C24-C25-C26
2	A	905	POV	C29-C210-C211-C212
2	C	909	POV	C313-C314-C315-C316
2	C	907	POV	C37-C38-C39-C310
2	B	906	POV	C2-C1-O11-P
2	D	906	POV	C2-C1-O11-P
2	D	907	POV	C2-C3-O31-C31
2	A	902	POV	C29-C210-C211-C212
2	A	902	POV	C27-C28-C29-C210
2	C	903	POV	C27-C28-C29-C210
2	C	904	POV	C32-C33-C34-C35
2	A	908	POV	C21-C22-C23-C24
2	A	906	POV	O31-C31-C32-C33
2	C	901	POV	C27-C28-C29-C210
2	A	903	POV	O21-C2-C3-O31
2	C	909	POV	O31-C31-C32-C33
2	C	901	POV	C22-C23-C24-C25
2	A	905	POV	C2-C1-O11-P
2	C	906	POV	C2-C1-O11-P
2	A	906	POV	C313-C314-C315-C316
2	A	908	POV	O31-C31-C32-C33
2	B	903	POV	C311-C312-C313-C314
2	C	905	POV	C36-C37-C38-C39
2	C	907	POV	O31-C31-C32-C33

Continued on next page...

Continued from previous page...

Mol	Chain	Res	Type	Atoms
2	B	907	POV	C36-C37-C38-C39
2	A	907	POV	O31-C31-C32-C33
2	B	908	POV	O31-C31-C32-C33
2	D	907	POV	O31-C31-C32-C33
2	D	907	POV	C37-C38-C39-C310
2	B	907	POV	O31-C31-C32-C33
2	B	901	POV	C22-C23-C24-C25
2	A	906	POV	C21-C22-C23-C24
2	C	909	POV	C21-C22-C23-C24
2	C	907	POV	C29-C210-C211-C212
2	D	903	POV	C29-C210-C211-C212
2	A	904	POV	C26-C27-C28-C29
2	C	902	POV	C210-C211-C212-C213
2	D	901	POV	C22-C23-C24-C25
2	D	903	POV	C27-C28-C29-C210
2	D	905	POV	C34-C35-C36-C37
2	C	901	POV	C215-C216-C217-C218
2	B	905	POV	C24-C25-C26-C27
2	D	907	POV	C29-C210-C211-C212
2	A	902	POV	C2-C3-O31-C31
2	C	903	POV	C2-C3-O31-C31
2	B	904	POV	C32-C33-C34-C35
2	A	907	POV	C36-C37-C38-C39
2	B	905	POV	C29-C210-C211-C212
2	C	907	POV	C36-C37-C38-C39
2	B	905	POV	C31-C32-C33-C34
2	C	903	POV	C312-C313-C314-C315
2	A	905	POV	C34-C35-C36-C37
2	C	905	POV	C29-C210-C211-C212
2	B	906	POV	C313-C314-C315-C316
2	C	905	POV	C34-C35-C36-C37
2	B	903	POV	C2-C3-O31-C31
2	B	901	POV	C27-C28-C29-C210
2	B	902	POV	C22-C23-C24-C25
2	C	904	POV	C212-C213-C214-C215
2	C	903	POV	C311-C312-C313-C314
2	D	901	POV	C27-C28-C29-C210
2	D	905	POV	C29-C210-C211-C212
2	A	904	POV	C2-C1-O11-P
2	C	904	POV	C1-C2-C3-O31
2	B	903	POV	C23-C24-C25-C26
2	A	904	POV	C29-C210-C211-C212

Continued on next page...

Continued from previous page...

Mol	Chain	Res	Type	Atoms
2	A	904	POV	C34-C35-C36-C37
2	D	906	POV	C313-C314-C315-C316
2	B	906	POV	O21-C21-C22-C23
2	C	904	POV	O21-C21-C22-C23
2	D	904	POV	O21-C21-C22-C23
2	A	905	POV	O21-C21-C22-C23
2	B	904	POV	O21-C21-C22-C23
2	C	904	POV	C34-C35-C36-C37
2	A	903	POV	C212-C213-C214-C215
2	D	904	POV	C212-C213-C214-C215
2	D	907	POV	C36-C37-C38-C39
2	C	906	POV	O21-C21-C22-C23
2	C	908	POV	C27-C28-C29-C210
2	B	904	POV	C212-C213-C214-C215
2	A	903	POV	O21-C21-C22-C23
2	D	906	POV	O21-C21-C22-C23
2	C	909	POV	C37-C38-C39-C310
2	A	908	POV	C311-C312-C313-C314
2	B	902	POV	O31-C31-C32-C33
2	D	904	POV	C23-C24-C25-C26
2	A	901	POV	O31-C31-C32-C33
2	A	901	POV	C22-C23-C24-C25
2	D	902	POV	C22-C23-C24-C25
2	C	904	POV	C211-C212-C213-C214
2	D	904	POV	C33-C34-C35-C36
2	B	904	POV	C1-C2-C3-O31
2	D	904	POV	C1-C2-C3-O31
2	B	906	POV	C310-C311-C312-C313
2	A	906	POV	O21-C21-C22-C23
2	B	908	POV	O21-C21-C22-C23
2	C	909	POV	O21-C21-C22-C23
2	B	903	POV	C310-C311-C312-C313
2	C	907	POV	C22-C23-C24-C25
2	A	908	POV	O21-C21-C22-C23
2	C	902	POV	O31-C31-C32-C33
2	C	908	POV	C26-C27-C28-C29
2	D	902	POV	C210-C211-C212-C213
2	D	905	POV	C26-C27-C28-C29
2	D	902	POV	O31-C31-C32-C33
2	D	907	POV	C21-C22-C23-C24
2	A	905	POV	O22-C21-C22-C23
2	C	903	POV	C23-C24-C25-C26

Continued on next page...

Continued from previous page...

Mol	Chain	Res	Type	Atoms
2	D	905	POV	C2-C1-O11-P
2	D	903	POV	C313-C314-C315-C316
2	A	903	POV	O22-C21-C22-C23
2	B	906	POV	O22-C21-C22-C23
2	D	906	POV	C310-C311-C312-C313
2	D	907	POV	C22-C23-C24-C25
2	D	904	POV	O22-C21-C22-C23
2	B	907	POV	C21-C22-C23-C24
2	A	908	POV	C37-C38-C39-C310
2	D	906	POV	O22-C21-C22-C23
2	A	901	POV	C210-C211-C212-C213
2	B	904	POV	O22-C21-C22-C23
2	C	904	POV	O22-C21-C22-C23
2	C	906	POV	O22-C21-C22-C23
2	B	908	POV	C37-C38-C39-C310
2	C	902	POV	C22-C23-C24-C25
2	C	901	POV	C36-C37-C38-C39
2	A	901	POV	O32-C31-C32-C33
2	C	902	POV	O32-C31-C32-C33
2	B	905	POV	C2-C1-O11-P
2	B	902	POV	O32-C31-C32-C33
2	D	902	POV	O32-C31-C32-C33
2	C	907	POV	C21-C22-C23-C24
2	B	908	POV	C32-C33-C34-C35
2	D	903	POV	C23-C24-C25-C26

There are no ring outliers.

32 monomers are involved in 117 short contacts:

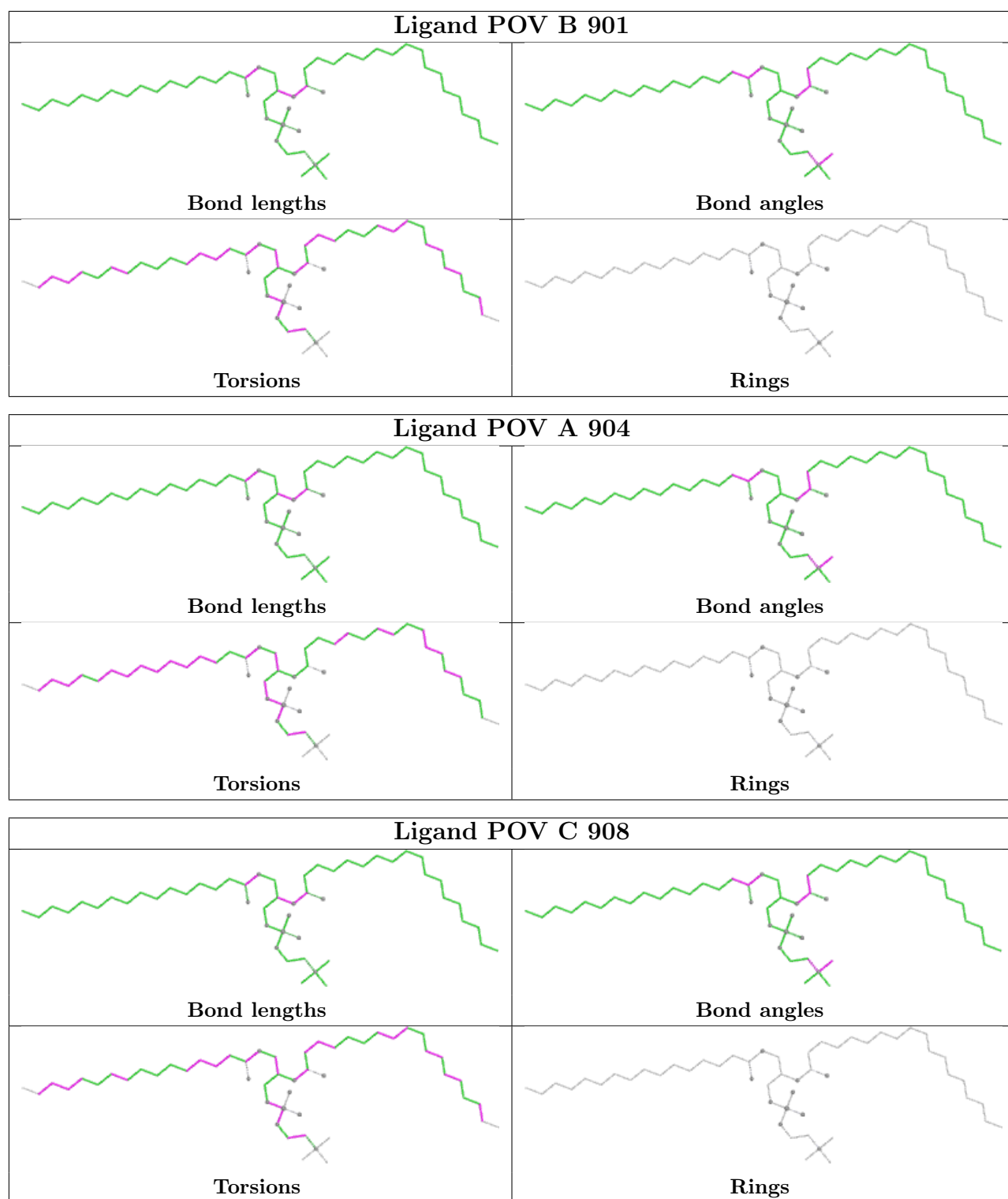
Mol	Chain	Res	Type	Clashes	Symm-Clashes
2	B	901	POV	2	0
2	A	904	POV	6	0
2	C	908	POV	3	0
2	C	906	POV	5	0
2	A	908	POV	2	0
2	B	902	POV	8	0
2	C	907	POV	3	0
2	C	909	POV	3	0
2	A	901	POV	5	0
2	C	904	POV	5	0
2	D	906	POV	3	0
2	D	907	POV	2	0

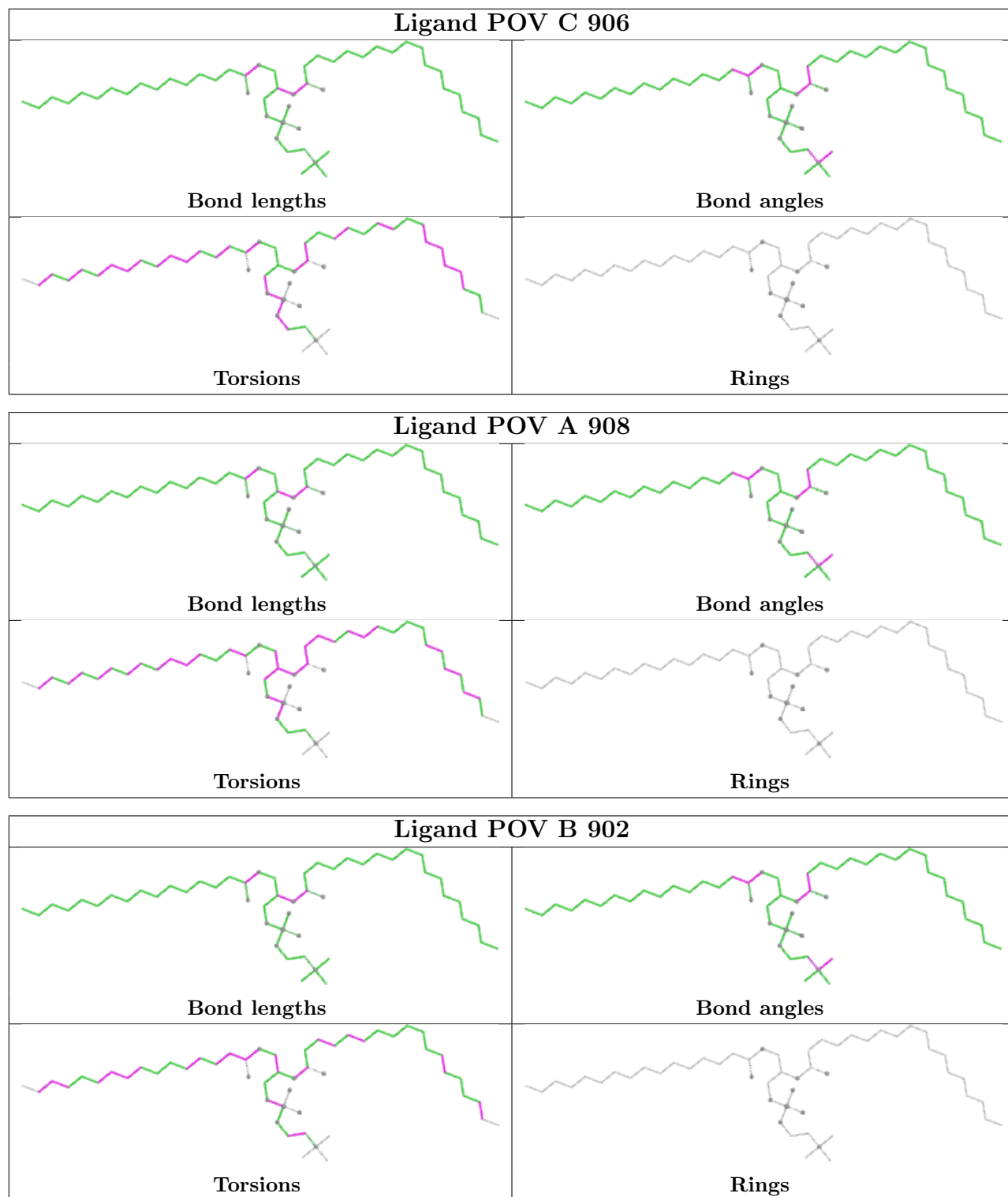
Continued on next page...

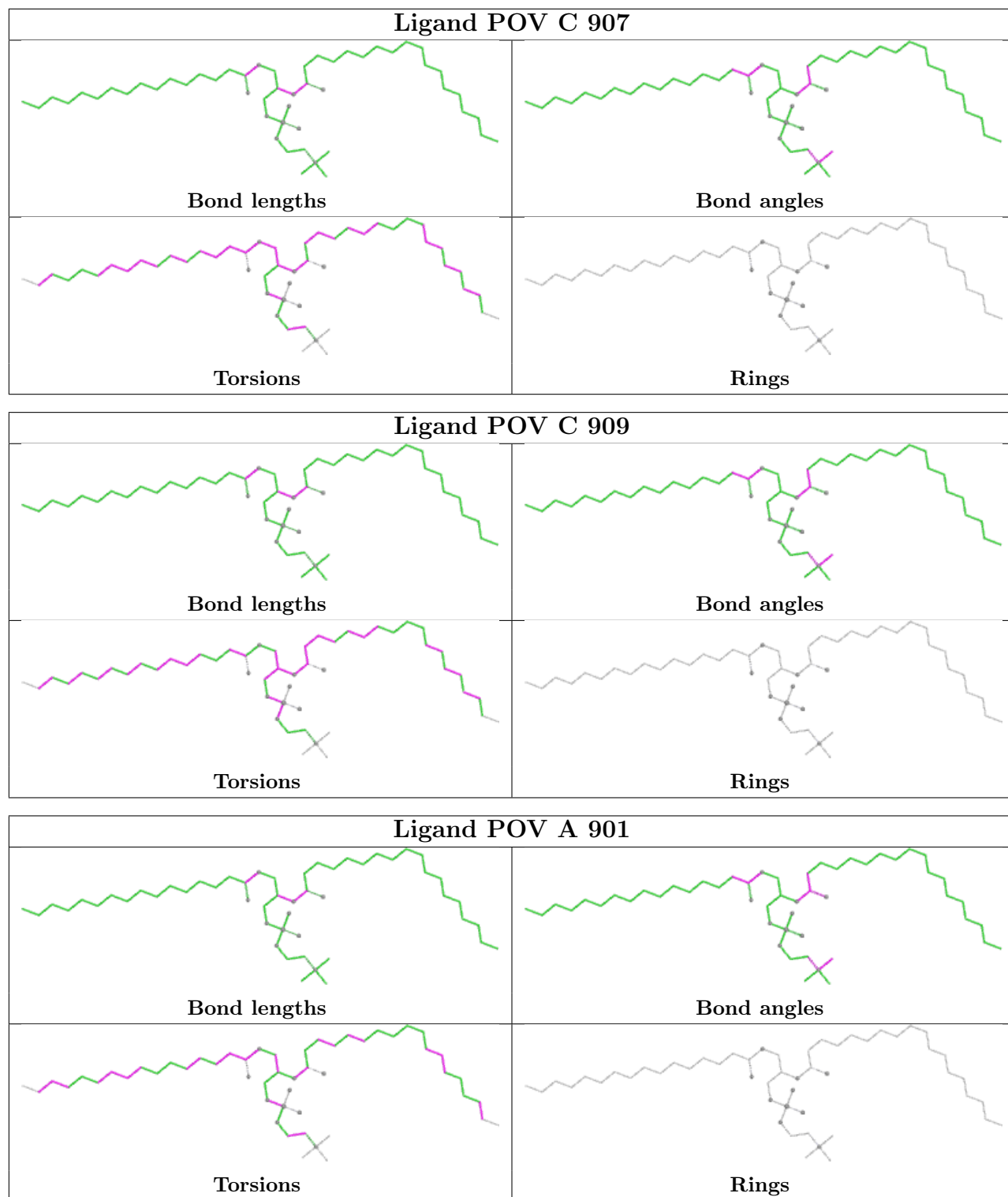
Continued from previous page...

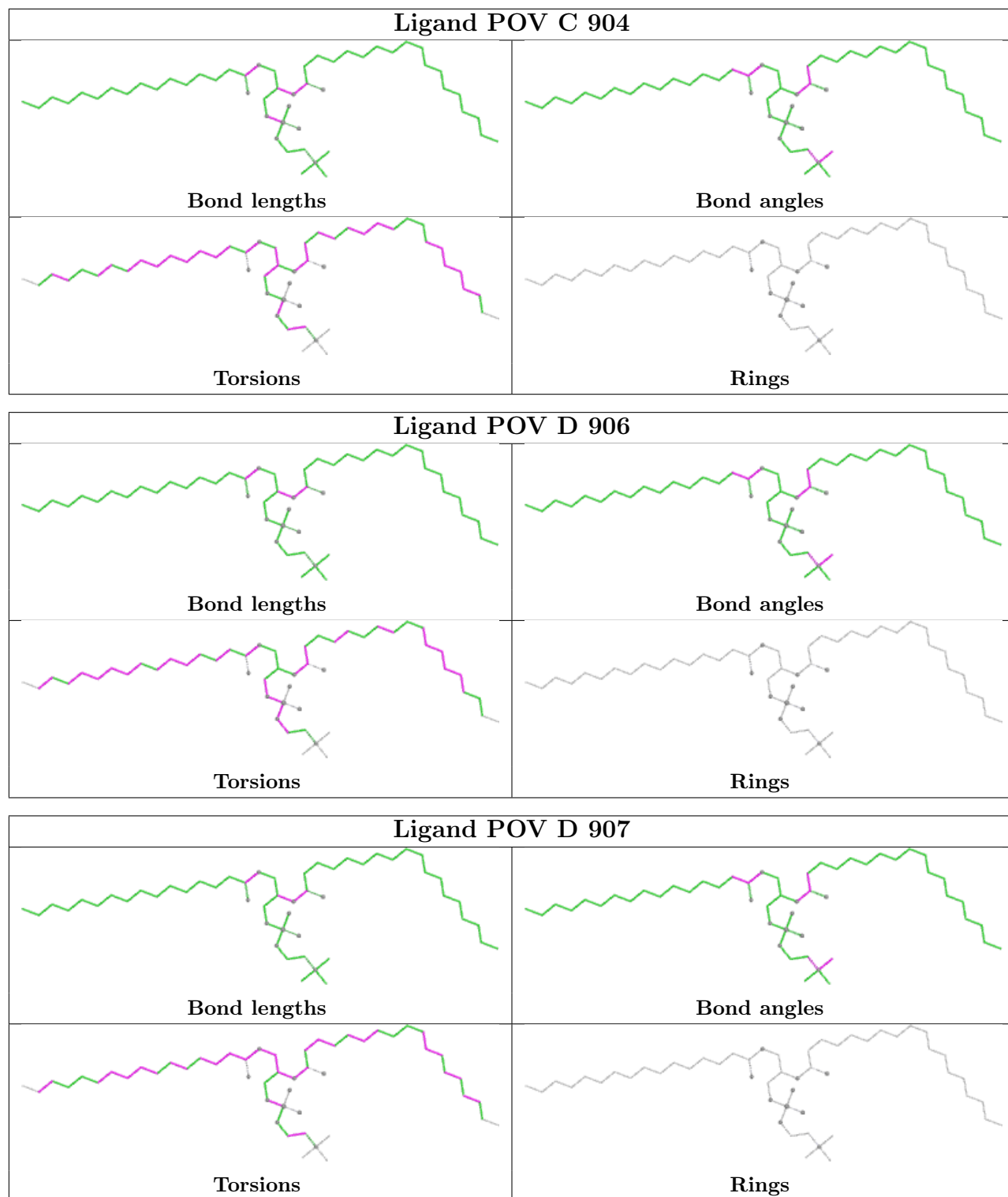
Mol	Chain	Res	Type	Clashes	Symm-Clashes
2	A	902	POV	4	0
2	D	902	POV	5	0
2	C	902	POV	2	0
2	A	905	POV	3	0
2	C	905	POV	6	0
2	D	901	POV	2	0
2	C	903	POV	7	0
2	C	901	POV	4	0
2	D	903	POV	7	0
2	B	908	POV	3	0
2	A	907	POV	3	0
2	B	904	POV	4	0
2	A	906	POV	4	0
2	B	906	POV	3	0
2	A	903	POV	4	0
2	B	905	POV	7	0
2	D	905	POV	7	0
2	B	907	POV	2	0
2	B	903	POV	5	0
2	D	904	POV	5	0

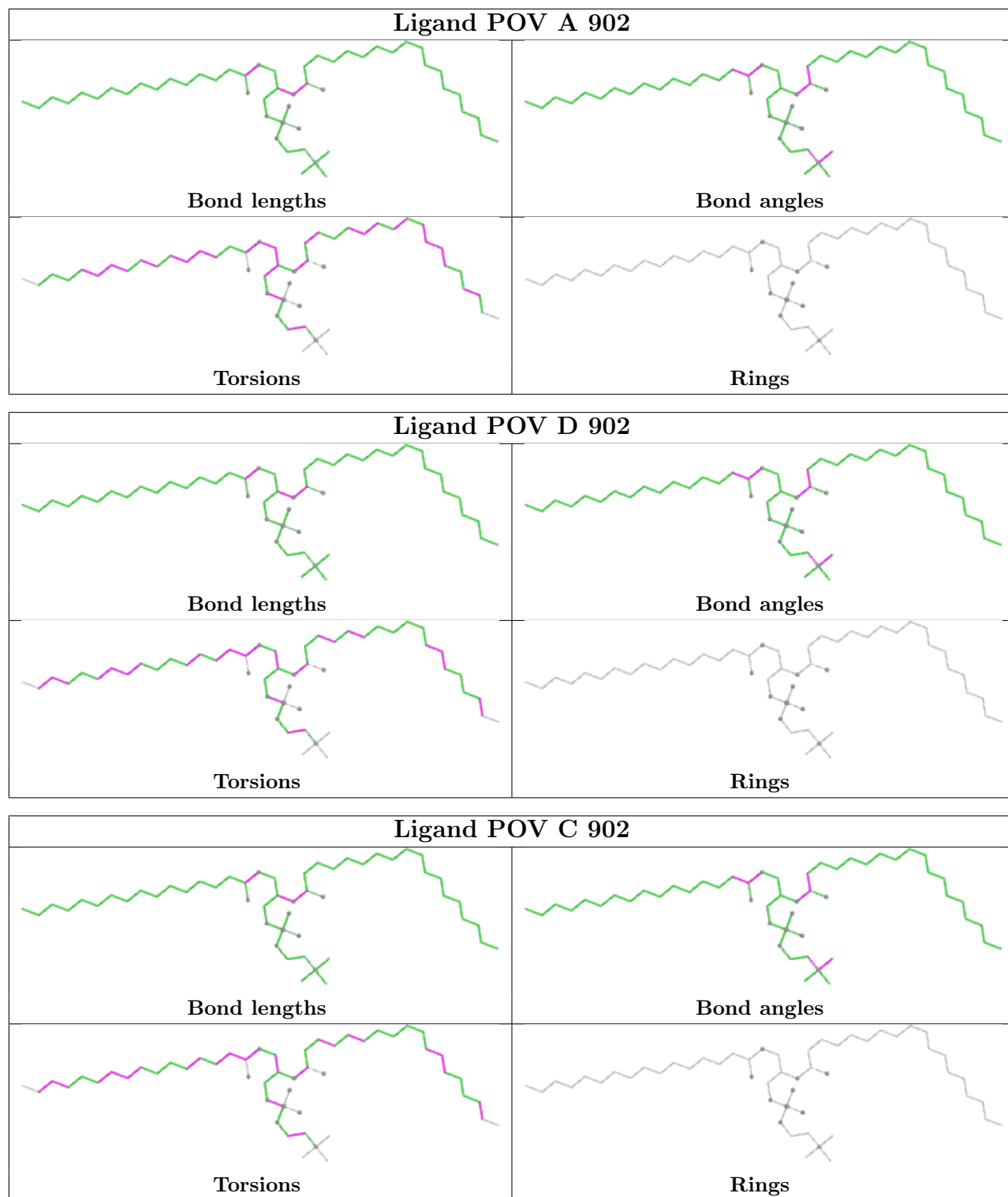
The following is a two-dimensional graphical depiction of Mogul quality analysis of bond lengths, bond angles, torsion angles, and ring geometry for all instances of the Ligand of Interest. In addition, ligands with molecular weight > 250 and outliers as shown on the validation Tables will also be included. For torsion angles, if less than 5% of the Mogul distribution of torsion angles is within 10 degrees of the torsion angle in question, then that torsion angle is considered an outlier. Any bond that is central to one or more torsion angles identified as an outlier by Mogul will be highlighted in the graph. For rings, the root-mean-square deviation (RMSD) between the ring in question and similar rings identified by Mogul is calculated over all ring torsion angles. If the average RMSD is greater than 60 degrees and the minimal RMSD between the ring in question and any Mogul-identified rings is also greater than 60 degrees, then that ring is considered an outlier. The outliers are highlighted in purple. The color gray indicates Mogul did not find sufficient equivalents in the CSD to analyse the geometry.

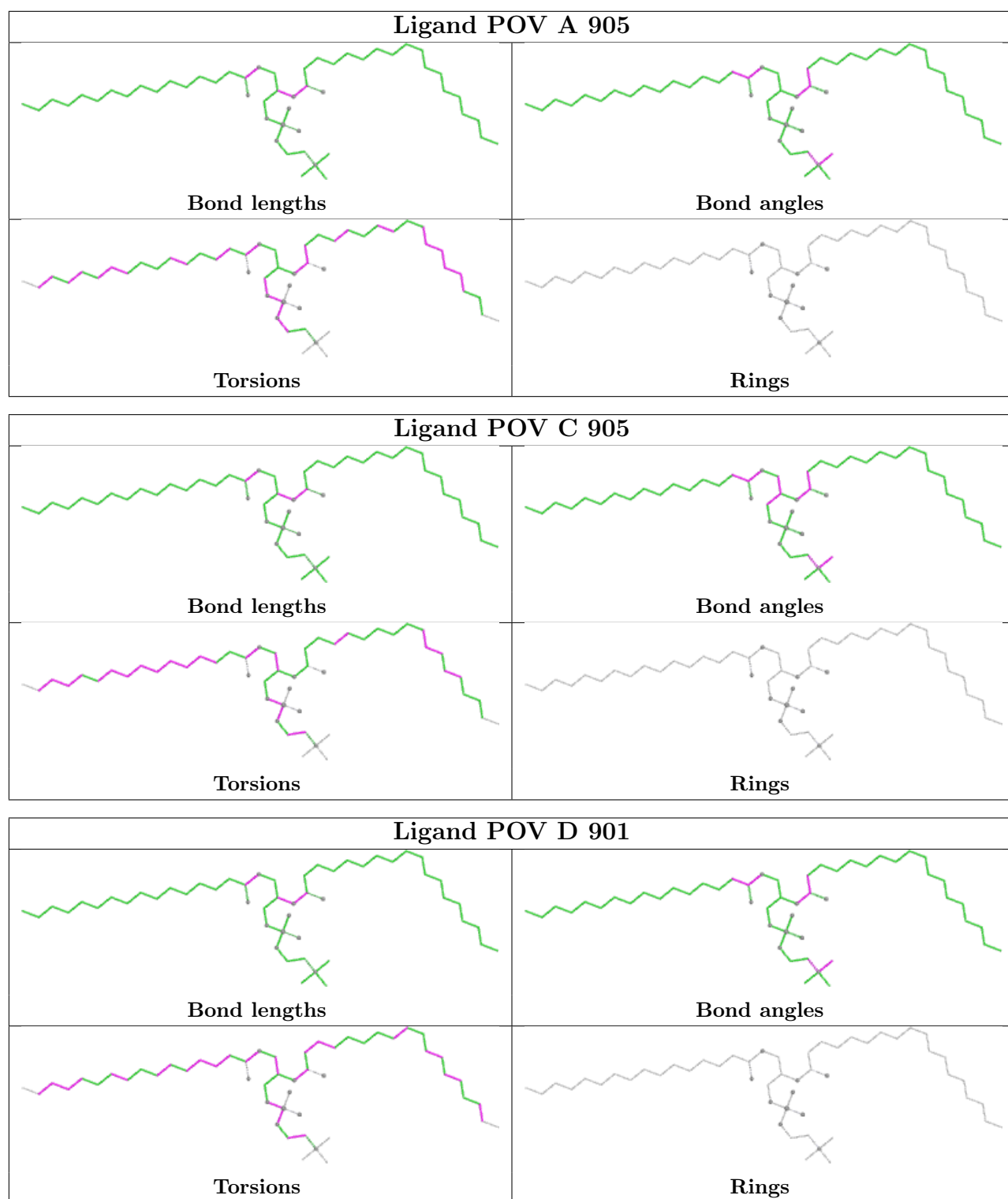


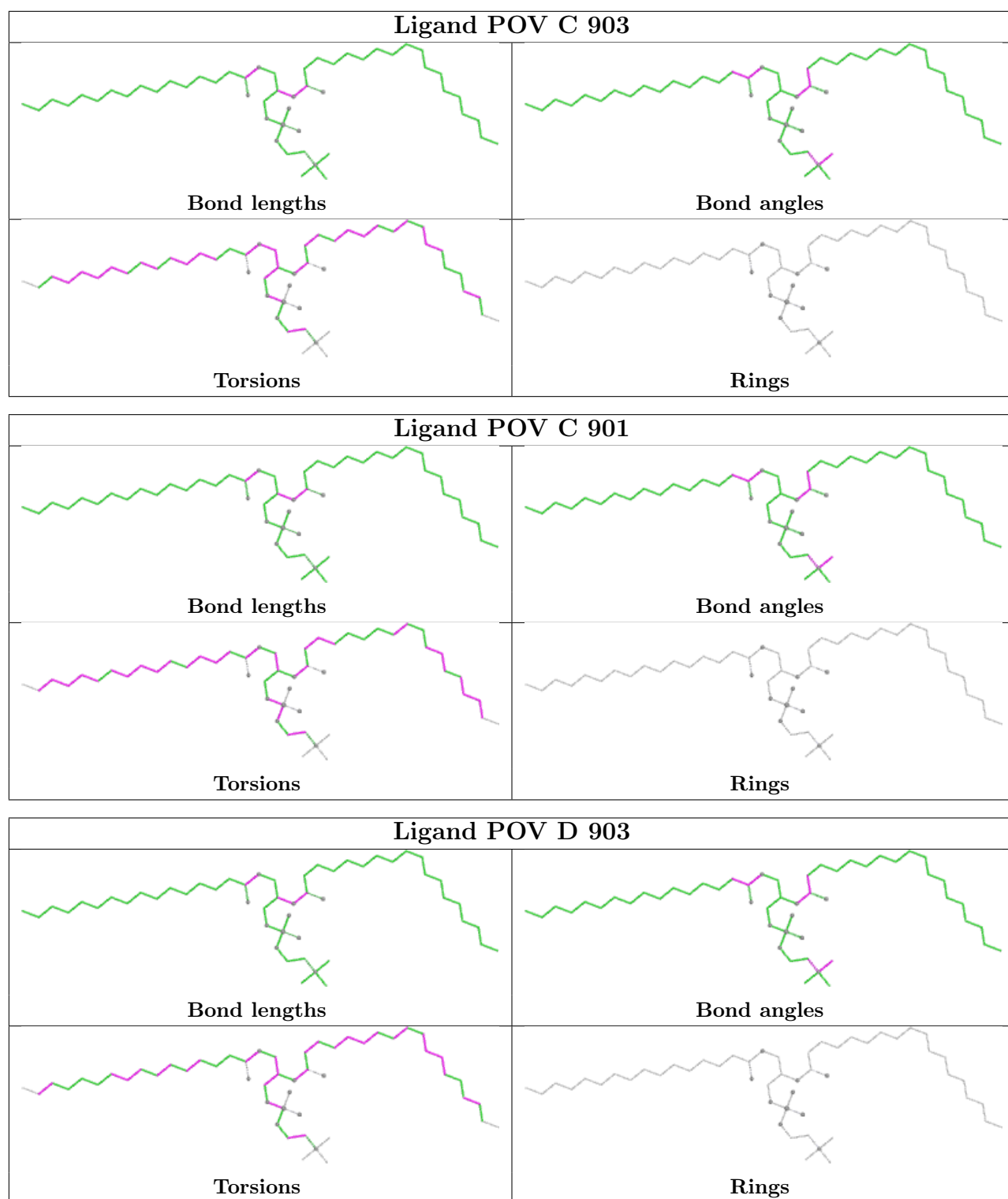


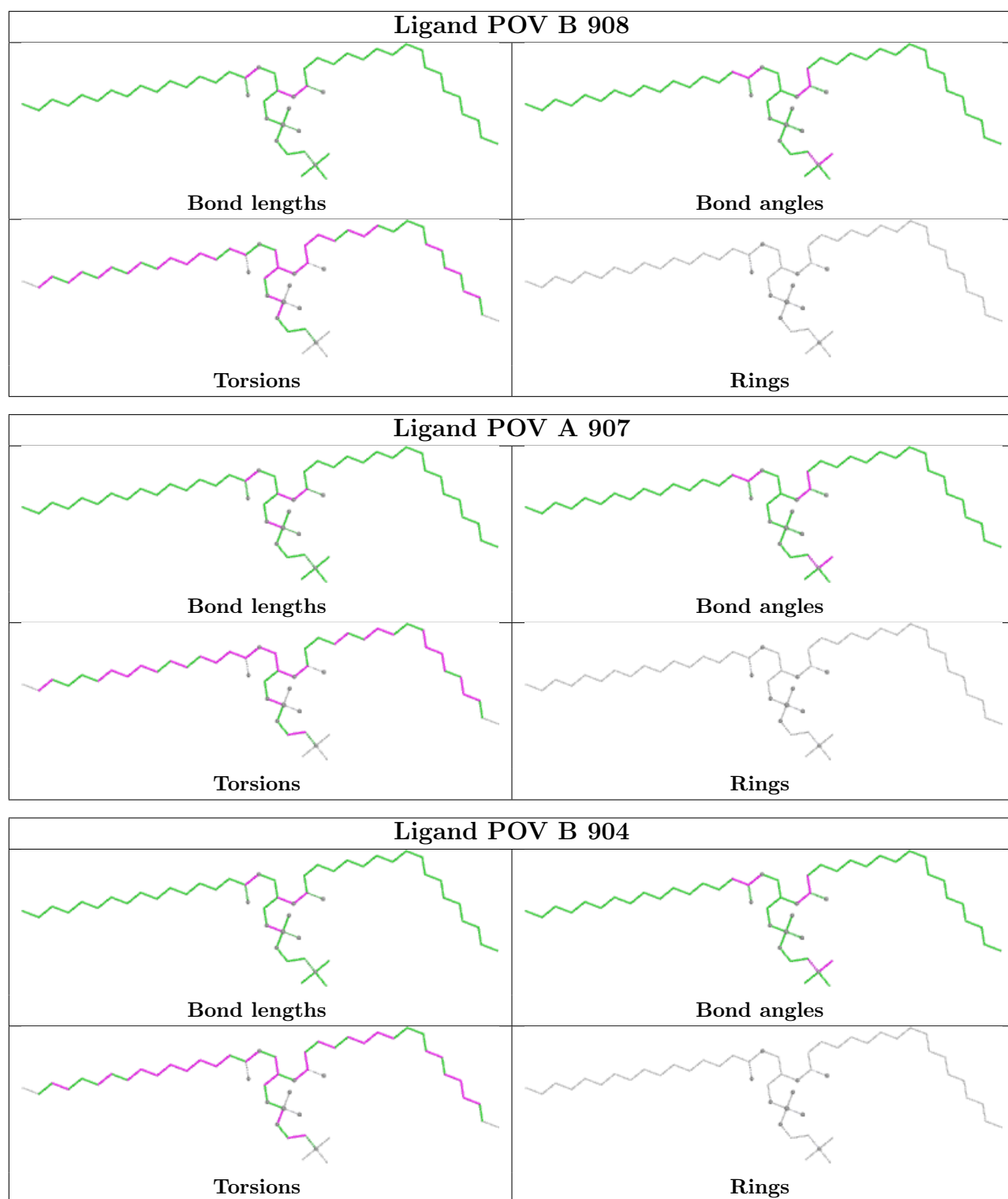


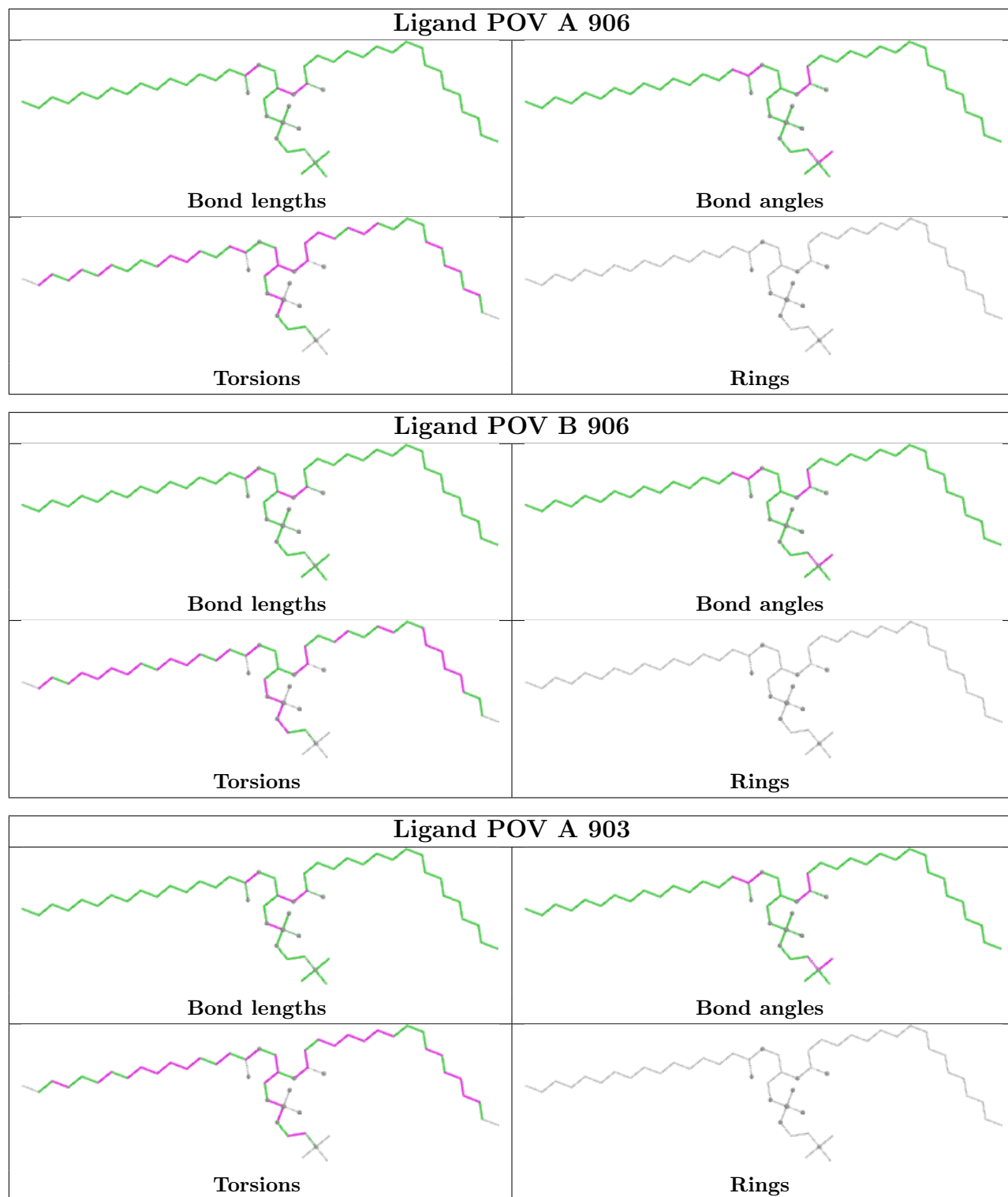


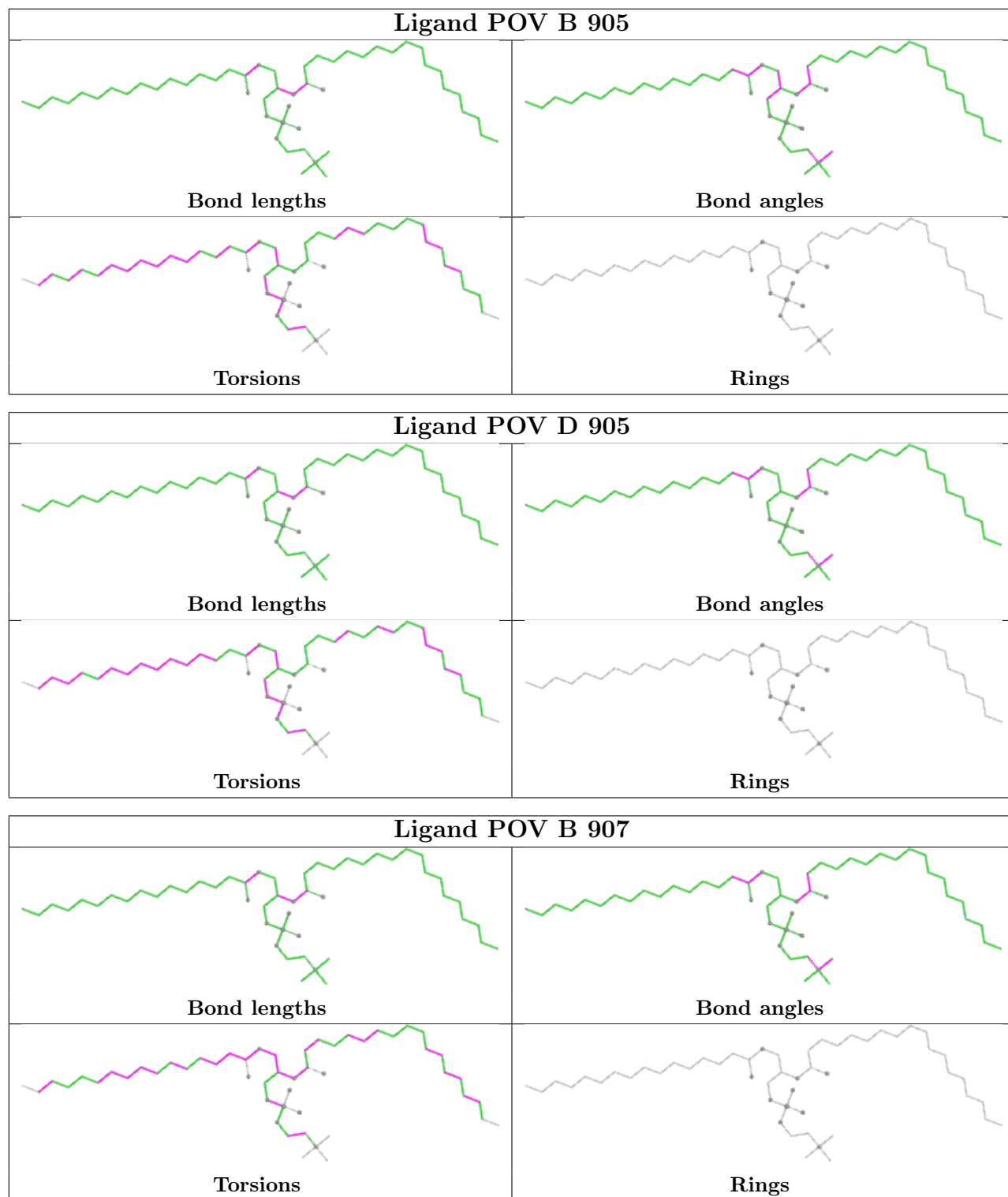


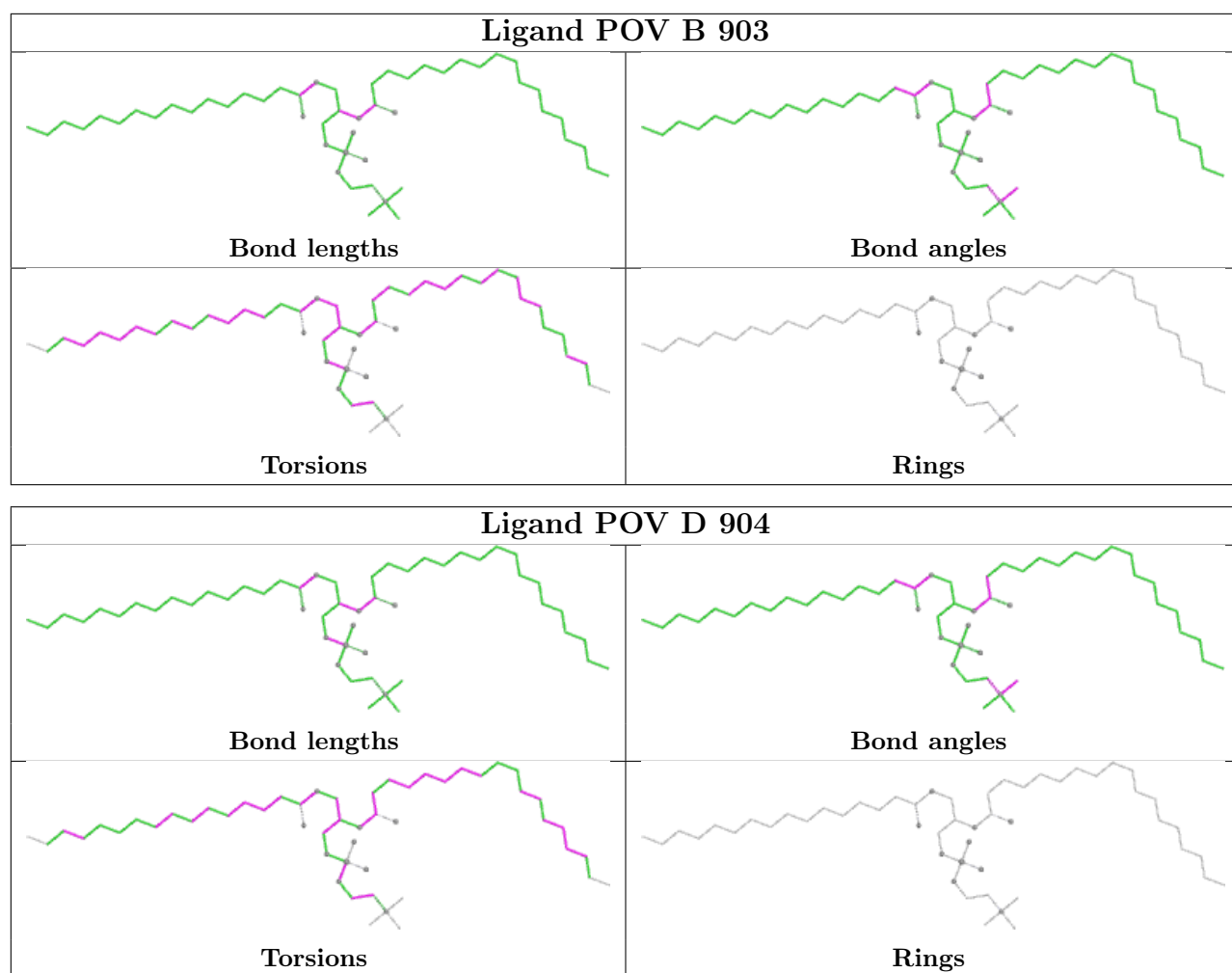












5.7 Other polymers [i](#)

There are no such residues in this entry.

5.8 Polymer linkage issues [i](#)

There are no chain breaks in this entry.

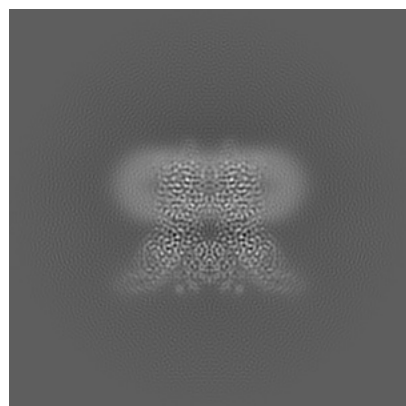
6 Map visualisation [i](#)

This section contains visualisations of the EMDB entry EMD-71680. These allow visual inspection of the internal detail of the map and identification of artifacts.

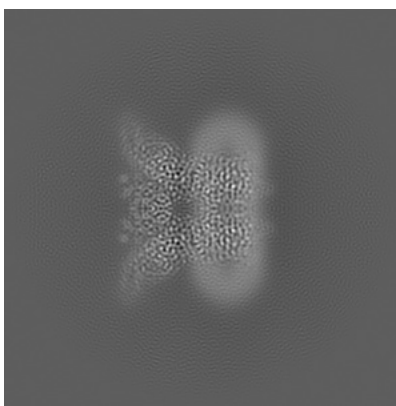
Images derived from a raw map, generated by summing the deposited half-maps, are presented below the corresponding image components of the primary map to allow further visual inspection and comparison with those of the primary map.

6.1 Orthogonal projections [i](#)

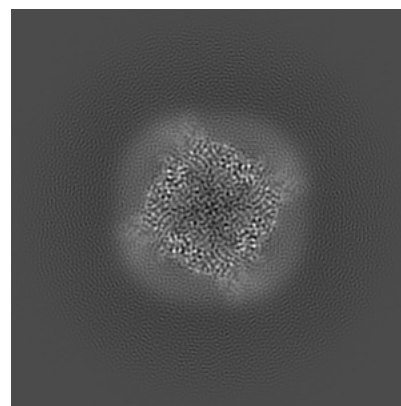
6.1.1 Primary map



X

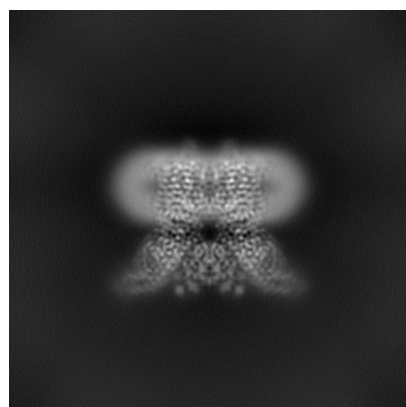


Y

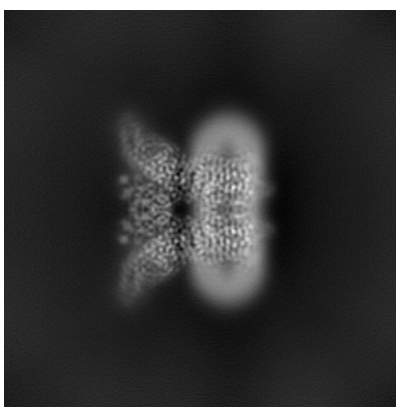


Z

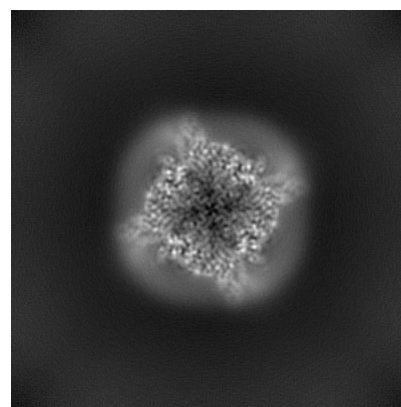
6.1.2 Raw map



X



Y

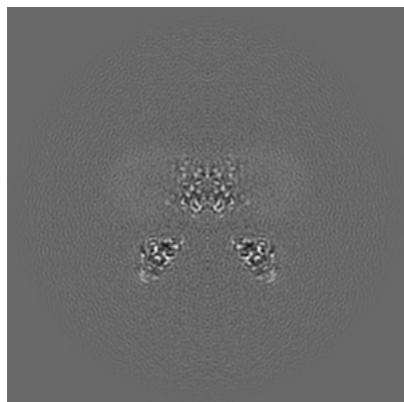


Z

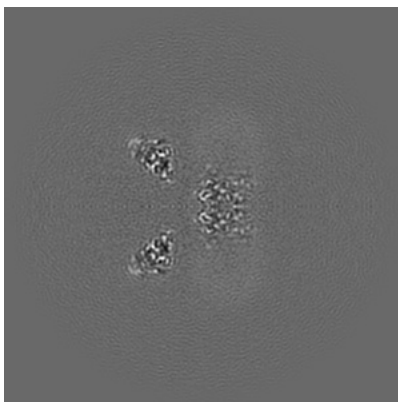
The images above show the map projected in three orthogonal directions.

6.2 Central slices [i](#)

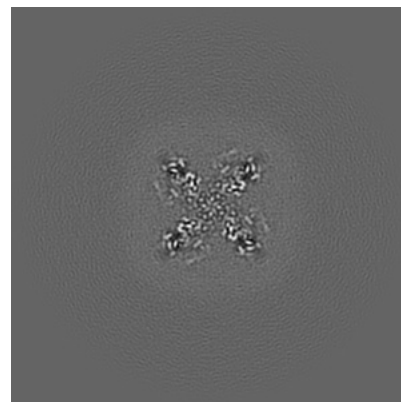
6.2.1 Primary map



X Index: 200

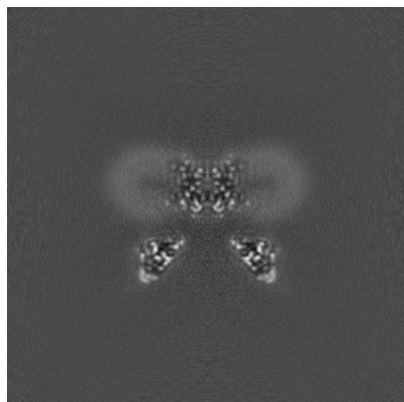


Y Index: 200

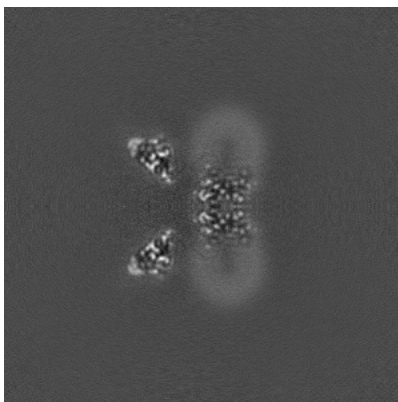


Z Index: 200

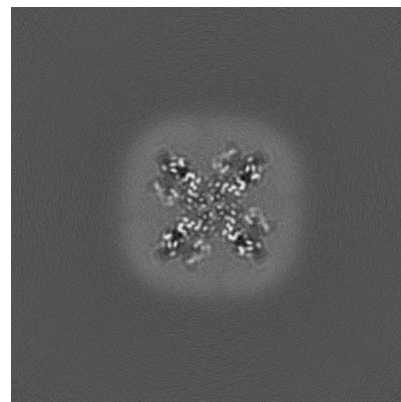
6.2.2 Raw map



X Index: 200



Y Index: 200

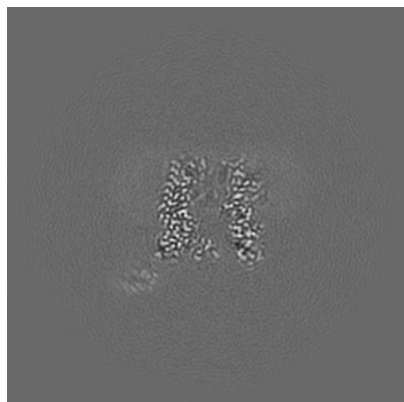


Z Index: 200

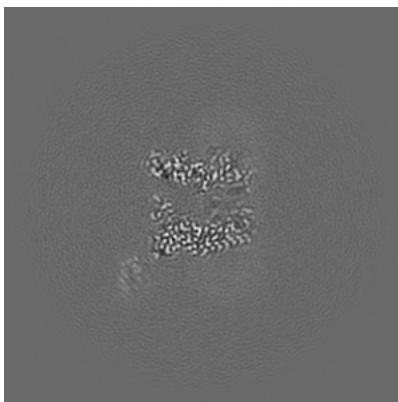
The images above show central slices of the map in three orthogonal directions.

6.3 Largest variance slices [i](#)

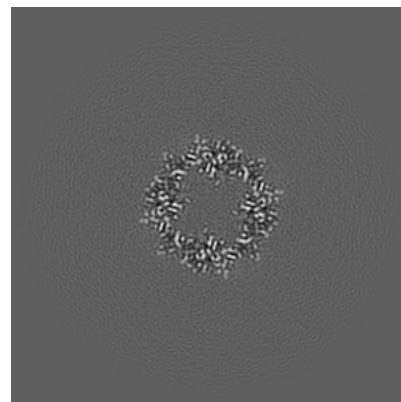
6.3.1 Primary map



X Index: 231

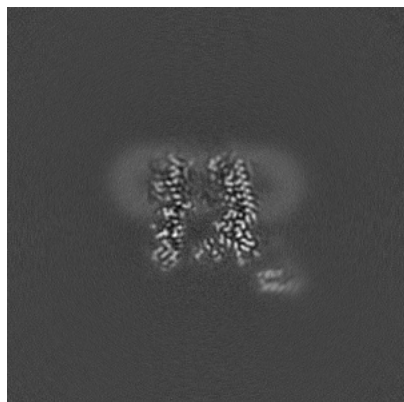


Y Index: 169

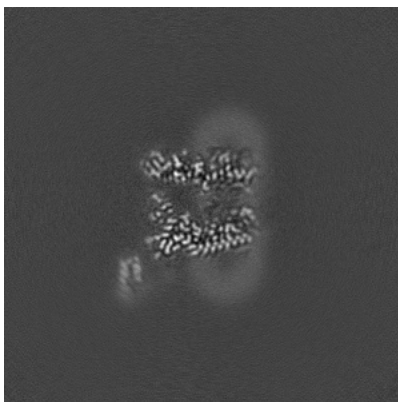


Z Index: 160

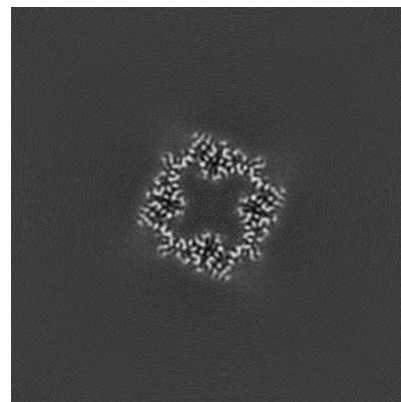
6.3.2 Raw map



X Index: 168



Y Index: 168

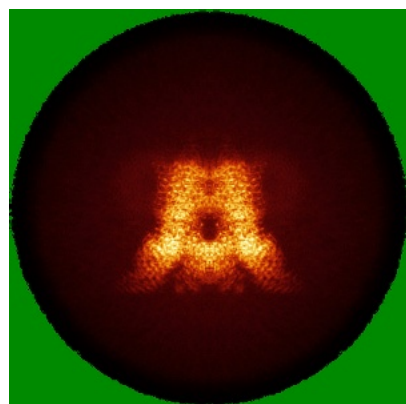


Z Index: 156

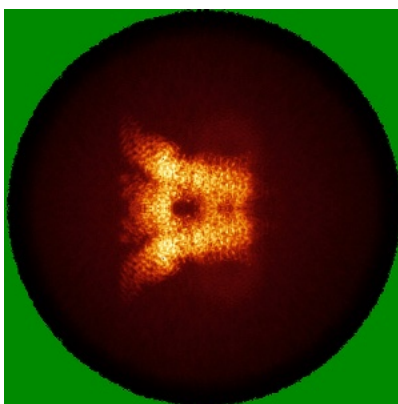
The images above show the largest variance slices of the map in three orthogonal directions.

6.4 Orthogonal standard-deviation projections (False-color) [i](#)

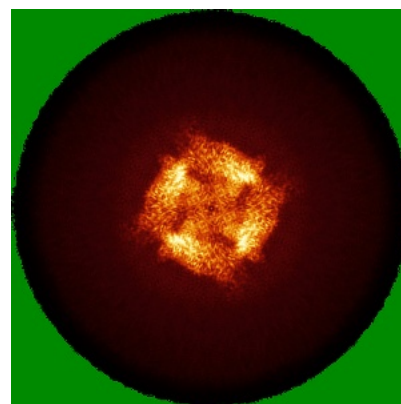
6.4.1 Primary map



X

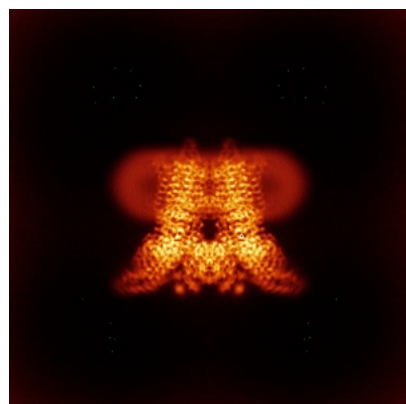


Y

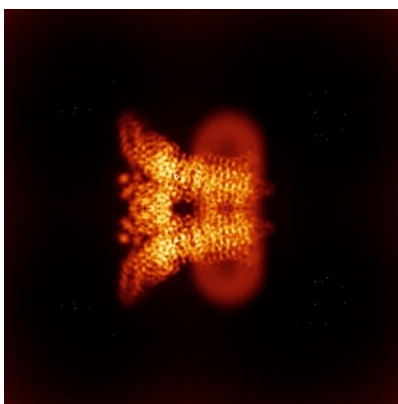


Z

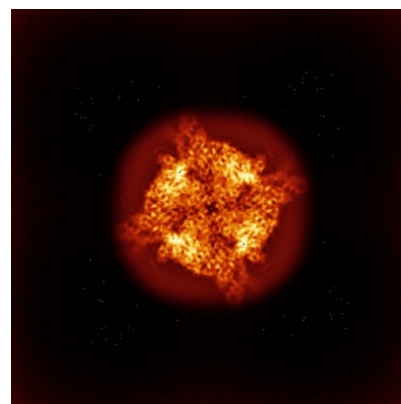
6.4.2 Raw map



X



Y

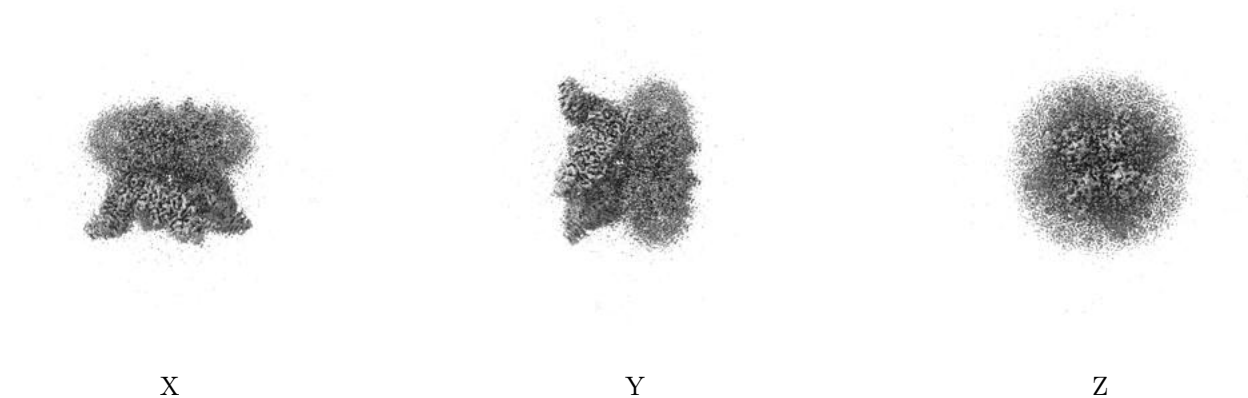


Z

The images above show the map standard deviation projections with false color in three orthogonal directions. Minimum values are shown in green, max in blue, and dark to light orange shades represent small to large values respectively.

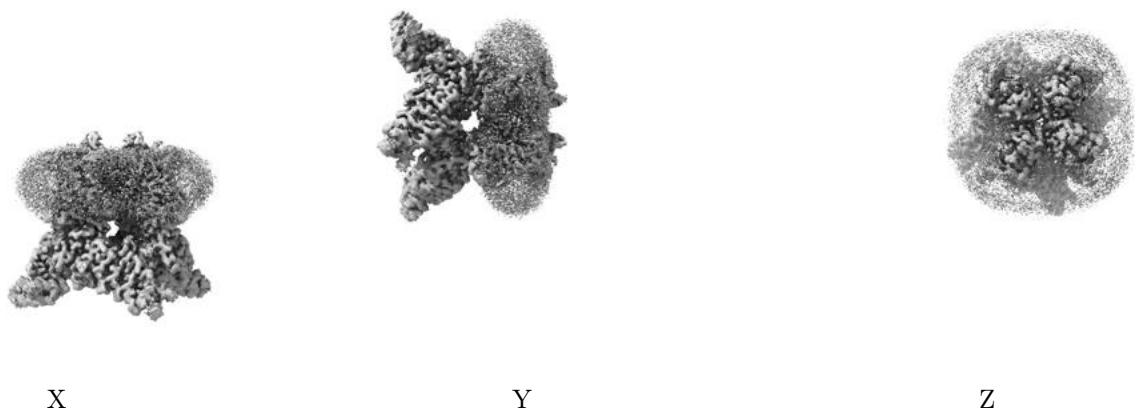
6.5 Orthogonal surface views [i](#)

6.5.1 Primary map



The images above show the 3D surface view of the map at the recommended contour level 0.09. These images, in conjunction with the slice images, may facilitate assessment of whether an appropriate contour level has been provided.

6.5.2 Raw map



These images show the 3D surface of the raw map. The raw map's contour level was selected so that its surface encloses the same volume as the primary map does at its recommended contour level.

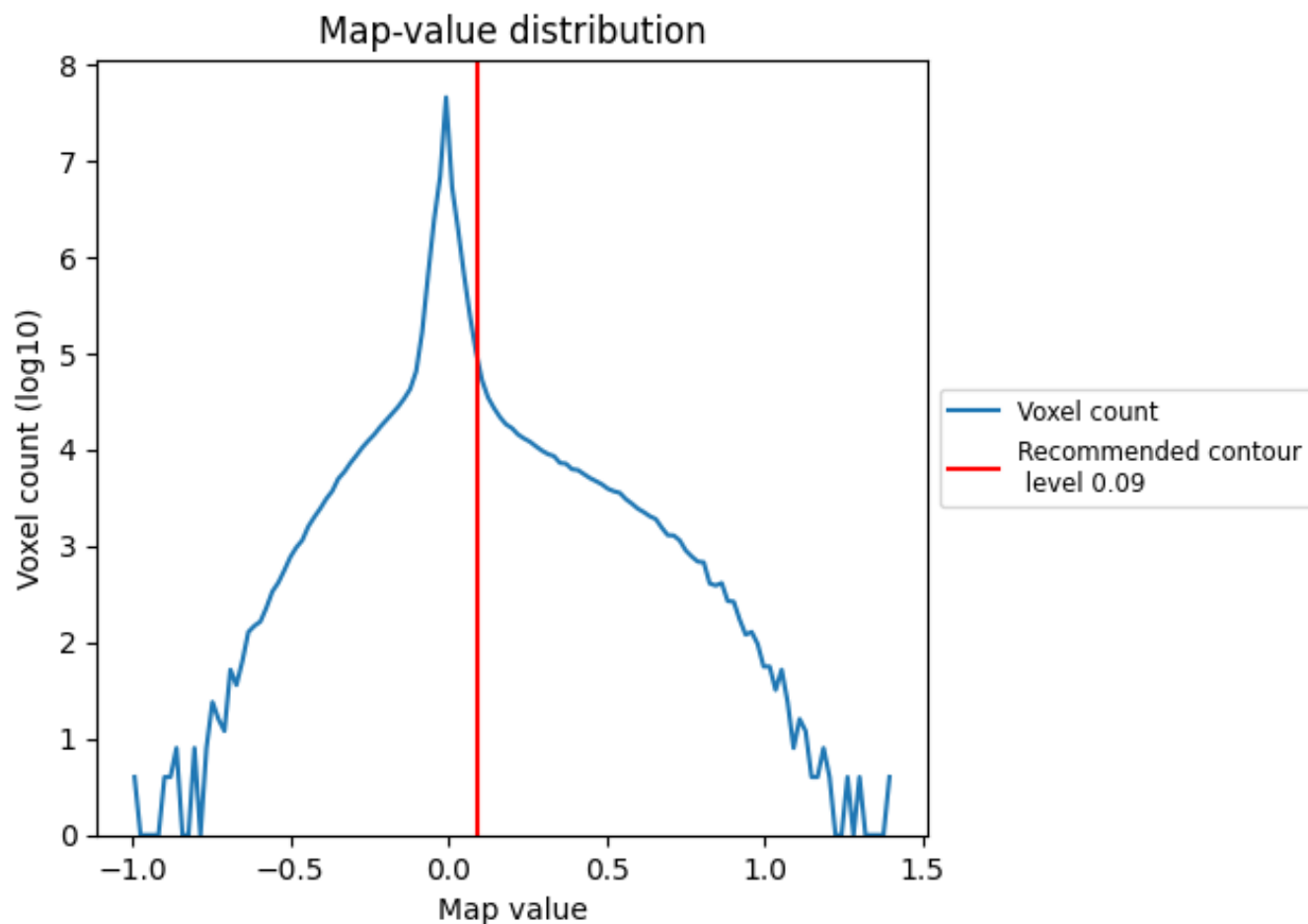
6.6 Mask visualisation [i](#)

This section was not generated. No masks/segmentation were deposited.

7 Map analysis [i](#)

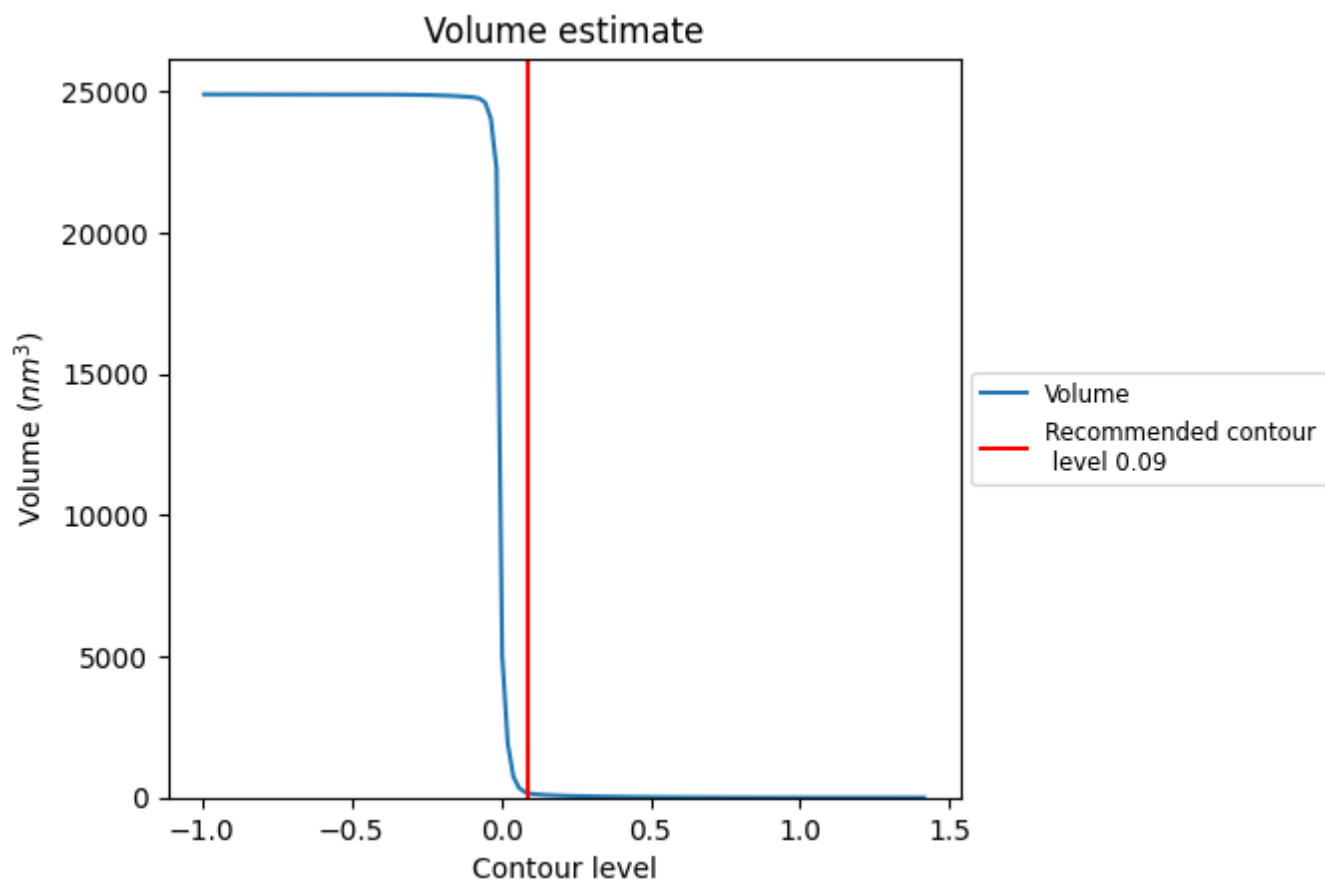
This section contains the results of statistical analysis of the map.

7.1 Map-value distribution [i](#)



The map-value distribution is plotted in 128 intervals along the x-axis. The y-axis is logarithmic. A spike in this graph at zero usually indicates that the volume has been masked.

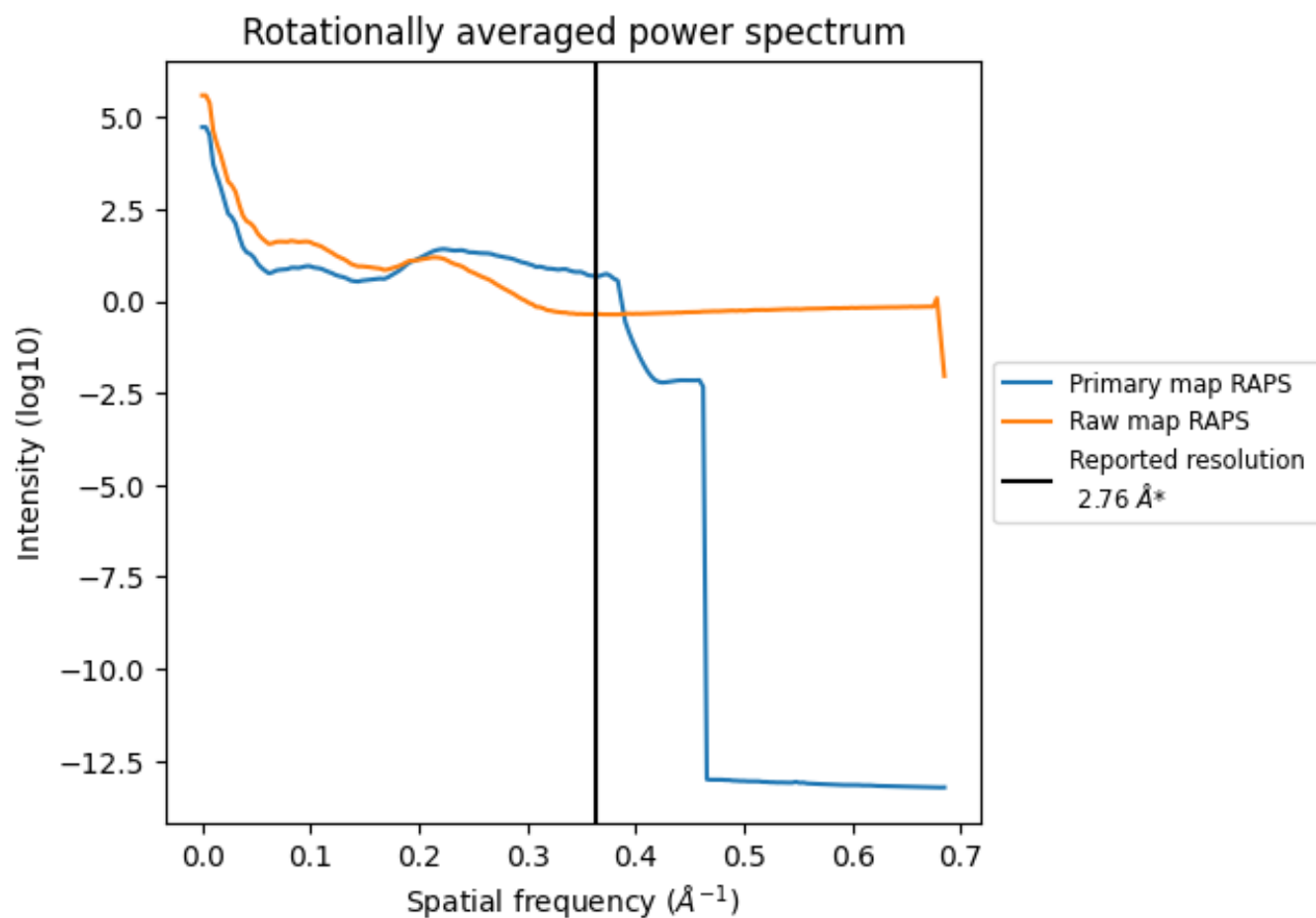
7.2 Volume estimate [i](#)



The volume at the recommended contour level is 166 nm³; this corresponds to an approximate mass of 150 kDa.

The volume estimate graph shows how the enclosed volume varies with the contour level. The recommended contour level is shown as a vertical line and the intersection between the line and the curve gives the volume of the enclosed surface at the given level.

7.3 Rotationally averaged power spectrum ⓘ

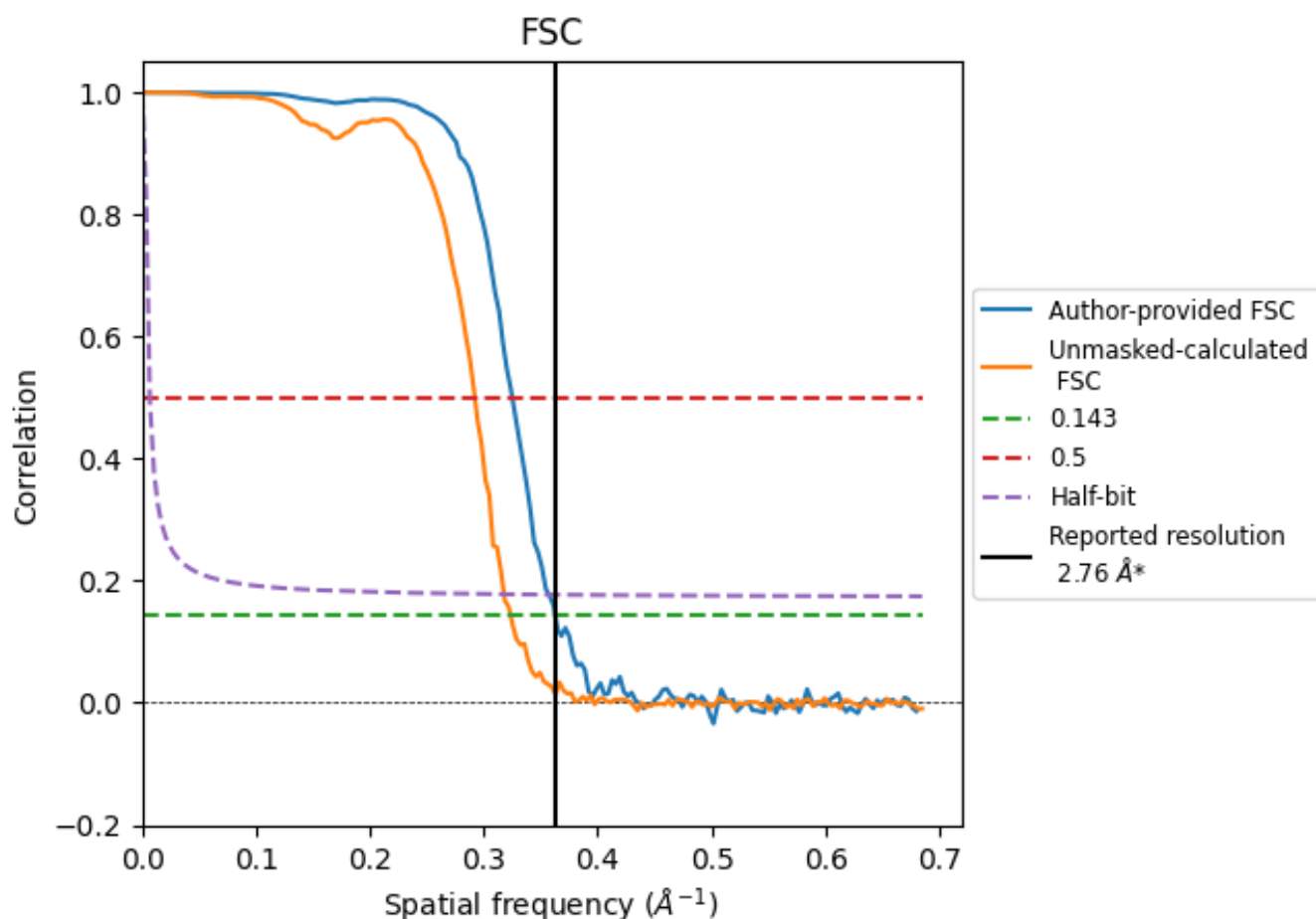


*Reported resolution corresponds to spatial frequency of 0.362 Å⁻¹

8 Fourier-Shell correlation [i](#)

Fourier-Shell Correlation (FSC) is the most commonly used method to estimate the resolution of single-particle and subtomogram-averaged maps. The shape of the curve depends on the imposed symmetry, mask and whether or not the two 3D reconstructions used were processed from a common reference. The reported resolution is shown as a black line. A curve is displayed for the half-bit criterion in addition to lines showing the 0.143 gold standard cut-off and 0.5 cut-off.

8.1 FSC [i](#)



*Reported resolution corresponds to spatial frequency of 0.362 \AA^{-1}

8.2 Resolution estimates [i](#)

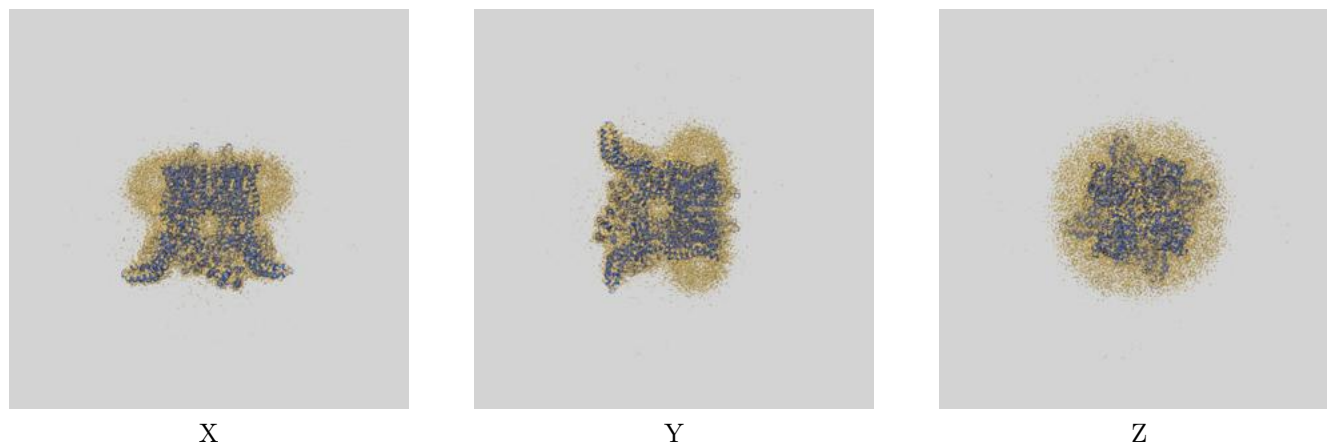
Resolution estimate (Å)	Estimation criterion (FSC cut-off)		
	0.143	0.5	Half-bit
Reported by author	2.76	-	-
Author-provided FSC curve	2.76	3.08	2.80
Unmasked-calculated*	3.09	3.42	3.15

*Resolution estimate based on FSC curve calculated by comparison of deposited half-maps. The value from deposited half-maps intersecting FSC 0.143 CUT-OFF 3.09 differs from the reported value 2.76 by more than 10 %

9 Map-model fit [i](#)

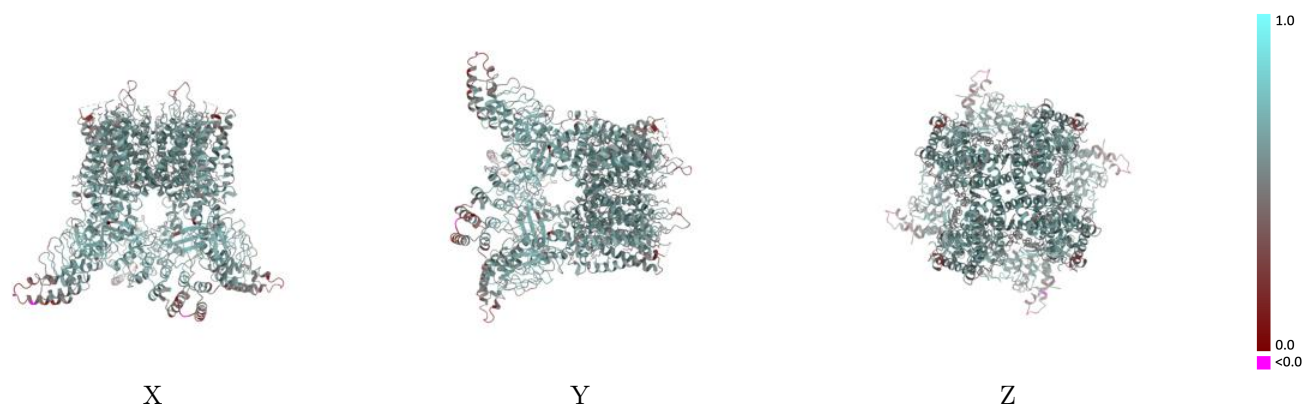
This section contains information regarding the fit between EMDB map EMD-71680 and PDB model 9PJ5. Per-residue inclusion information can be found in section [3](#) on page [8](#).

9.1 Map-model overlay [i](#)



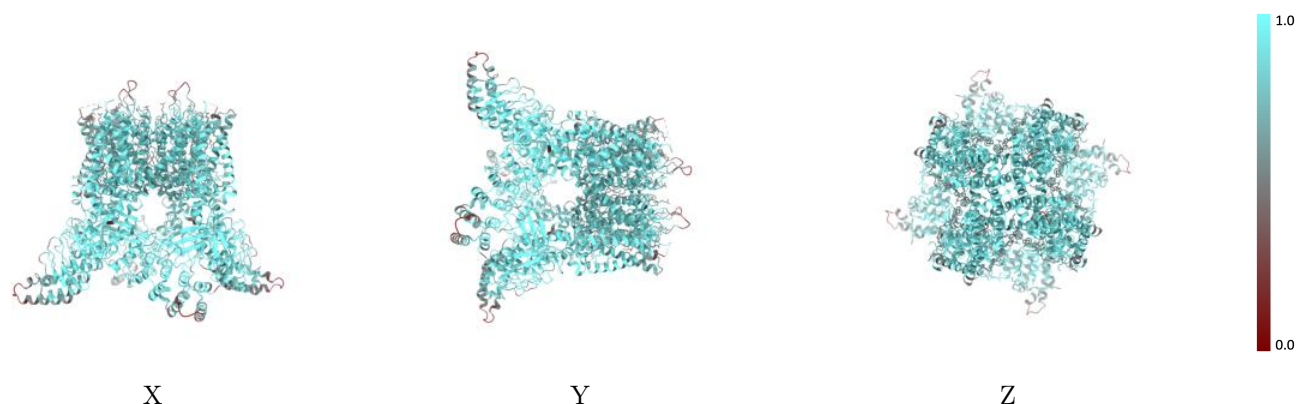
The images above show the 3D surface view of the map at the recommended contour level 0.09 at 50% transparency in yellow overlaid with a ribbon representation of the model coloured in blue. These images allow for the visual assessment of the quality of fit between the atomic model and the map.

9.2 Q-score mapped to coordinate model [i](#)



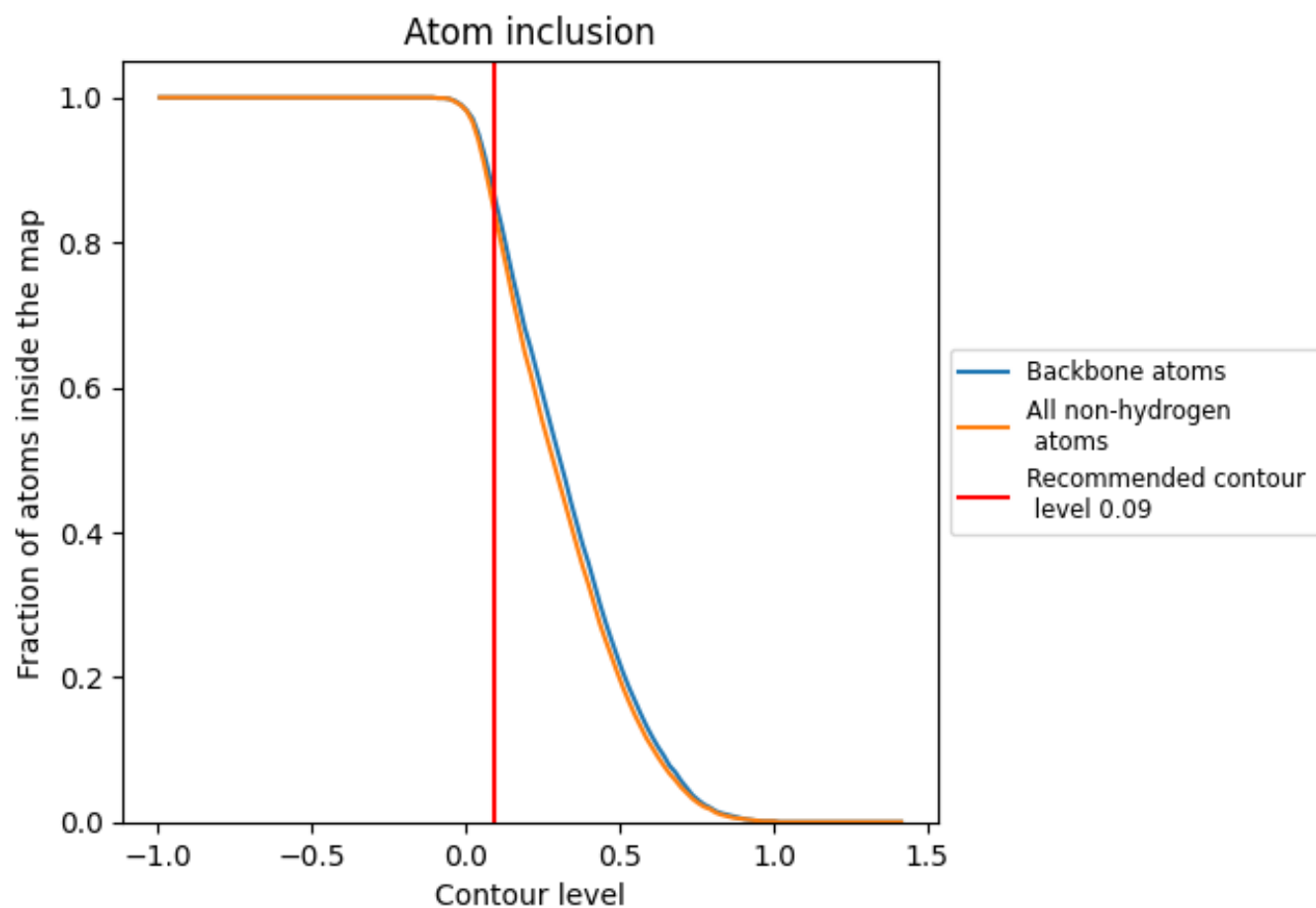
The images above show the model with each residue coloured according to its Q-score. This shows their resolvability in the map with higher Q-score values reflecting better resolvability. Please note: Q-score is calculating the resolvability of atoms, and thus high values are only expected at resolutions at which atoms can be resolved. Low Q-score values may therefore be expected for many entries.

9.3 Atom inclusion mapped to coordinate model [i](#)



The images above show the model with each residue coloured according to its atom inclusion. This shows to what extent they are inside the map at the recommended contour level (0.09).

9.4 Atom inclusion [i](#)



At the recommended contour level, 87% of all backbone atoms, 85% of all non-hydrogen atoms, are inside the map.

9.5 Map-model fit summary ⓘ

The table lists the average atom inclusion at the recommended contour level (0.09) and Q-score for the entire model and for each chain.

Chain	Atom inclusion	Q-score
All	<div></div> 0.8490	<div></div> 0.5660
A	<div></div> 0.8530	<div></div> 0.5670
B	<div></div> 0.8490	<div></div> 0.5650
C	<div></div> 0.8540	<div></div> 0.5690
D	<div></div> 0.8500	<div></div> 0.5630

