



Full wwPDB EM Validation Report ⓘ

Jun 15, 2026 – 02:35 PM EDT

PDB ID : 9MKG / pdb_00009mkg
EMDB ID : EMD-48326
Title : Cryo-EM structure of human CD33 bound to 15G15.3 Fab
Authors : Puno, M.R.; Azumaya, C.
Deposited on : 2024-12-17
Resolution : 3.45 Å(reported)
Based on initial model : 5IHB

This is a Full wwPDB EM Validation Report for a publicly released PDB entry.

We welcome your comments at validation@mail.wwpdb.org

A user guide is available at

<https://www.wwpdb.org/validation/2017/EMValidationReportHelp>
with specific help available everywhere you see the ⓘ symbol.

The types of validation reports are described at

<http://www.wwpdb.org/validation/2017/FAQs#types>.

The following versions of software and data (see [references ⓘ](#)) were used in the production of this report:

EMDB validation analysis : 0.0.1.dev132
MolProbity : 4-5-2 with Phenix2.0
Percentile statistics : 20250101.v01 (using entries in the PDB archive January 1st 2025)
EM percentile statistics : 202505.v01 (Using data in the EMDB archive up until May 2025)
MapQ : 1.9.13
Ideal geometry (proteins) : Engh & Huber (2001)
Ideal geometry (DNA, RNA) : Parkinson et al. (1996)
Validation Pipeline (wwPDB-VP) : 2.49

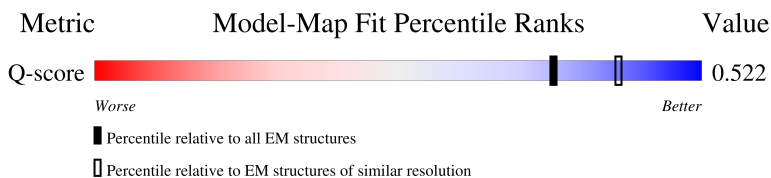
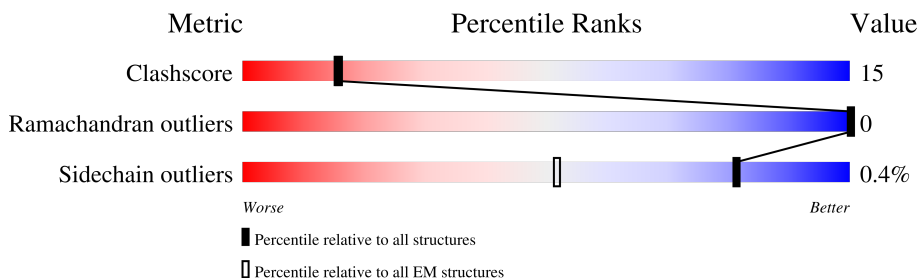
1 Overall quality at a glance

The following experimental techniques were used to determine the structure:

ELECTRON MICROSCOPY




The reported resolution of this entry is 3.45 Å.

Percentile scores (ranging between 0-100) for global validation metrics of the entry are shown in the following graphic. The table shows the number of entries on which the scores are based.



Metric	Whole archive (#Entries)	EM structures (#Entries)	Similar EM resolution (#Entries, resolution range(Å))
Clashscore	229148	23984	-
Ramachandran outliers	224038	23583	-
Sidechain outliers	223484	23102	-
Q-score	-	25397	13836 (2.95 - 3.95)

The table below summarises the geometric issues observed across the polymeric chains and their fit to the map. The red, orange, yellow and green segments of the bar indicate the fraction of residues that contain outliers for ≥ 3 , 2, 1 and 0 types of geometric quality criteria respectively. A grey segment represents the fraction of residues that are not modelled. The numeric value for each fraction is indicated below the corresponding segment, with a dot representing fractions $\leq 5\%$. The upper red bar (where present) indicates the fraction of residues that have poor fit to the EM map (all-atom inclusion $< 40\%$). The numeric value is given above the bar.

Mol	Chain	Length	Quality of chain
1	A	222	
2	B	219	
3	C	277	

2 Entry composition

There are 3 unique types of molecules in this entry. The entry contains 6636 atoms, of which 2374 are hydrogens and 0 are deuteriums.

In the tables below, the AltConf column contains the number of residues with at least one atom in alternate conformation and the Trace column contains the number of residues modelled with at most 2 atoms.

- Molecule 1 is a protein called 15G15.3 Fab heavy chain.

Mol	Chain	Residues	Atoms						AltConf	Trace
1	A	213	Total	C	H	N	O	S	1	0
			2297	1005	707	265	313	7		

- Molecule 2 is a protein called 15G15.3 Fab light chain.

Mol	Chain	Residues	Atoms						AltConf	Trace
2	B	217	Total	C	H	N	O	S	0	0
			2388	1051	719	278	335	5		

- Molecule 3 is a protein called Myeloid cell surface antigen CD33.

Mol	Chain	Residues	Atoms						AltConf	Trace
3	C	123	Total	C	H	N	O	S	0	0
			1951	632	948	178	189	4		

There are 34 discrepancies between the modelled and reference sequences:

Chain	Residue	Modelled	Actual	Comment	Reference
C	-2	GLY	-	expression tag	UNP P20138
C	-1	SER	-	expression tag	UNP P20138
C	0	MET	-	expression tag	UNP P20138
C	244	ASN	-	expression tag	UNP P20138
C	245	SER	-	expression tag	UNP P20138
C	246	GLY	-	expression tag	UNP P20138
C	247	LEU	-	expression tag	UNP P20138
C	248	ASN	-	expression tag	UNP P20138
C	249	ASP	-	expression tag	UNP P20138
C	250	ILE	-	expression tag	UNP P20138
C	251	PHE	-	expression tag	UNP P20138
C	252	GLU	-	expression tag	UNP P20138
C	253	ALA	-	expression tag	UNP P20138
C	254	GLN	-	expression tag	UNP P20138
C	255	LYS	-	expression tag	UNP P20138

Continued on next page...

Continued from previous page...

Chain	Residue	Modelled	Actual	Comment	Reference
C	256	ILE	-	expression tag	UNP P20138
C	257	GLU	-	expression tag	UNP P20138
C	258	TRP	-	expression tag	UNP P20138
C	259	HIS	-	expression tag	UNP P20138
C	260	GLU	-	expression tag	UNP P20138
C	261	ASN	-	expression tag	UNP P20138
C	262	LEU	-	expression tag	UNP P20138
C	263	TYR	-	expression tag	UNP P20138
C	264	PHE	-	expression tag	UNP P20138
C	265	GLN	-	expression tag	UNP P20138
C	266	GLY	-	expression tag	UNP P20138
C	267	ASP	-	expression tag	UNP P20138
C	268	TYR	-	expression tag	UNP P20138
C	269	LYS	-	expression tag	UNP P20138
C	270	ASP	-	expression tag	UNP P20138
C	271	ASP	-	expression tag	UNP P20138
C	272	ASP	-	expression tag	UNP P20138
C	273	ASP	-	expression tag	UNP P20138
C	274	LYS	-	expression tag	UNP P20138

4 Experimental information

Property	Value	Source
EM reconstruction method	SINGLE PARTICLE	Depositor
Imposed symmetry	POINT, Not provided	
Number of particles used	561118	Depositor
Resolution determination method	FSC 0.143 CUT-OFF	Depositor
CTF correction method	PHASE FLIPPING AND AMPLITUDE CORRECTION	Depositor
Microscope	TFS KRIOS	Depositor
Voltage (kV)	300	Depositor
Electron dose ($e^-/\text{\AA}^2$)	64	Depositor
Minimum defocus (nm)	8000	Depositor
Maximum defocus (nm)	24000	Depositor
Magnification	Not provided	
Image detector	GATAN K3 BIOQUANTUM (6k x 4k)	Depositor
Maximum map value	4.150	Depositor
Minimum map value	-3.795	Depositor
Average map value	0.000	Depositor
Map value standard deviation	0.048	Depositor
Recommended contour level	0.44	Depositor
Map size (Å)	351.96005, 351.96005, 351.96005	wwPDB
Map dimensions	256, 256, 256	wwPDB
Map angles (°)	90.0, 90.0, 90.0	wwPDB
Pixel spacing (Å)	1.374844, 1.374844, 1.374844	Depositor

5 Model quality [i](#)

5.1 Standard geometry [i](#)

The Z score for a bond length (or angle) is the number of standard deviations the observed value is removed from the expected value. A bond length (or angle) with $|Z| > 5$ is considered an outlier worth inspection. RMSZ is the root-mean-square of all Z scores of the bond lengths (or angles).

Mol	Chain	Bond lengths		Bond angles	
		RMSZ	# $ Z > 5$	RMSZ	# $ Z > 5$
1	A	0.12	0/1627	0.25	0/2216
2	B	0.12	0/1707	0.25	0/2323
3	C	0.12	0/1029	0.24	0/1396
All	All	0.12	0/4363	0.25	0/5935

There are no bond length outliers.

There are no bond angle outliers.

There are no chirality outliers.

There are no planarity outliers.

5.2 Too-close contacts [i](#)

In the following table, the Non-H and H(model) columns list the number of non-hydrogen atoms and hydrogen atoms in the chain respectively. The H(added) column lists the number of hydrogen atoms added and optimized by MolProbity. The Clashes column lists the number of clashes within the asymmetric unit, whereas Symm-Clashes lists symmetry-related clashes.

Mol	Chain	Non-H	H(model)	H(added)	Clashes	Symm-Clashes
1	A	1590	707	1558	51	0
2	B	1669	719	1630	64	0
3	C	1003	948	959	14	0
All	All	4262	2374	4147	121	0

The all-atom clashscore is defined as the number of clashes found per 1000 atoms (including hydrogen atoms). The all-atom clashscore for this structure is 15.

All (121) close contacts within the same asymmetric unit are listed below, sorted by their clash magnitude.

Atom-1	Atom-2	Interatomic distance (Å)	Clash overlap (Å)
2:B:12:VAL:HG23	2:B:82:VAL:HG11	1.61	0.81

Continued on next page...

Continued from previous page...

Atom-1	Atom-2	Interatomic distance (Å)	Clash overlap (Å)
1:A:48:MET:HE1	1:A:90:TYR:CD2	2.22	0.75
1:A:95:GLU:HB3	1:A:100:PHE:CE1	2.22	0.74
2:B:104:GLN:N	2:B:104:GLN:OE1	2.21	0.74
1:A:80:MET:HE1	1:A:90:TYR:CD2	2.23	0.72
2:B:1:ILE:HD11	2:B:97:GLN:HB2	1.71	0.72
1:A:48:MET:SD	1:A:80:MET:HE2	2.28	0.72
2:B:3:LEU:HD11	2:B:94:GLN:HG2	1.71	0.72
1:A:38:ARG:HB2	1:A:48:MET:CE	2.20	0.71
1:A:32:HIS:CD2	1:A:94:ARG:HD2	2.27	0.70
2:B:65:ARG:HD2	2:B:81:ARG:O	1.94	0.68
2:B:37:LEU:HD13	2:B:75:PHE:CD1	2.30	0.67
1:A:1:GLN:OE1	1:A:1:GLN:N	2.20	0.67
1:A:4:LEU:HD12	1:A:22:CYS:SG	2.36	0.66
1:A:98:ASP:OD2	2:B:53:TYR:OH	2.14	0.66
1:A:48:MET:HE1	1:A:90:TYR:HD2	1.59	0.65
1:A:23:LYS:HA	1:A:77:THR:HG22	1.78	0.65
1:A:39:GLN:O	1:A:88:ALA:HB1	1.96	0.65
1:A:13:LYS:O	1:A:16:SER:OG	2.15	0.64
2:B:40:TYR:CE1	2:B:93:MET:HE2	2.33	0.64
1:A:82(C):LEU:HB3	1:A:111:VAL:HG21	1.80	0.63
1:A:181:VAL:HG21	2:B:139:LEU:HD22	1.80	0.63
1:A:66:ARG:NH2	1:A:86:ASP:OD2	2.32	0.62
1:A:84:SER:O	1:A:87:THR:HG22	2.00	0.62
1:A:23:LYS:HB3	1:A:77:THR:HG22	1.83	0.61
1:A:138:LEU:O	1:A:181:VAL:HG23	2.01	0.61
3:C:63:GLN:OE1	3:C:64:GLU:N	2.34	0.60
1:A:49:GLY:HA3	1:A:69:ILE:HD11	1.84	0.60
2:B:52:ILE:CD1	2:B:77:LEU:HD13	2.33	0.59
2:B:14:PRO:HG3	2:B:110:ILE:HD12	1.85	0.59
1:A:53:ILE:HD11	3:C:25:THR:CG2	2.33	0.59
2:B:39:TRP:HB2	2:B:52:ILE:HB	1.85	0.59
1:A:16:SER:O	1:A:82(C):LEU:HD12	2.03	0.58
3:C:117:LEU:HD12	3:C:118:SER:N	2.20	0.57
1:A:53:ILE:HD11	3:C:25:THR:HG21	1.87	0.57
2:B:40:TYR:HE1	2:B:93:MET:HE2	1.70	0.57
1:A:6:GLN:HB2	1:A:105:GLN:NE2	2.20	0.56
2:B:62:VAL:HG13	2:B:63:PRO:HD2	1.87	0.56
2:B:51:LEU:O	2:B:52:ILE:HG13	2.05	0.56
2:B:41:LEU:HD12	2:B:42:GLN:N	2.20	0.56
1:A:95:GLU:HB3	1:A:100:PHE:HE1	1.69	0.56
2:B:14:PRO:HG3	2:B:110:ILE:CD1	2.36	0.56

Continued on next page...

Continued from previous page...

Atom-1	Atom-2	Interatomic distance (Å)	Clash overlap (Å)
2:B:142:ASN:OD1	2:B:176:THR:OG1	2.20	0.56
1:A:97:ALA:HB2	3:C:29:PRO:HB3	1.87	0.56
2:B:12:VAL:HB	2:B:82:VAL:HG21	1.86	0.56
2:B:12:VAL:CG2	2:B:82:VAL:HG11	2.35	0.56
2:B:10:LEU:HD23	2:B:108:VAL:HG22	1.89	0.55
2:B:15:GLY:N	2:B:82:VAL:O	2.32	0.55
1:A:181:VAL:HG21	2:B:139:LEU:CD2	2.37	0.54
1:A:23:LYS:CB	1:A:77:THR:HG22	2.37	0.54
2:B:3:LEU:HD11	2:B:94:GLN:CG	2.37	0.54
2:B:74:ASP:OD2	2:B:75:PHE:N	2.40	0.54
2:B:16:GLU:O	2:B:82:VAL:HG23	2.08	0.54
1:A:100:PHE:N	2:B:40:TYR:OH	2.40	0.54
2:B:77:LEU:HD12	2:B:78:LYS:N	2.22	0.54
1:A:75:THR:O	1:A:77:THR:HG23	2.08	0.54
2:B:29:LEU:O	2:B:29:LEU:HD23	2.08	0.53
2:B:51:LEU:HD11	2:B:66:PHE:CE2	2.44	0.53
1:A:2:VAL:HG22	1:A:26:GLY:C	2.33	0.53
2:B:41:LEU:HD13	2:B:90:TYR:CE2	2.45	0.52
2:B:153:LYS:NZ	2:B:199:GLU:OE1	2.34	0.52
3:C:12:VAL:HG22	3:C:117:LEU:HD11	1.92	0.52
3:C:117:LEU:HD12	3:C:118:SER:H	1.75	0.51
1:A:48:MET:HE1	1:A:90:TYR:CE2	2.45	0.51
2:B:37:LEU:HD21	2:B:39:TRP:NE1	2.26	0.51
2:B:27:SER:HA	2:B:73:THR:HG23	1.92	0.51
1:A:51:ILE:HG13	1:A:56:THR:O	2.11	0.51
2:B:1:ILE:CD1	2:B:97:GLN:HB2	2.41	0.50
2:B:50:LEU:HD12	2:B:51:LEU:H	1.75	0.50
1:A:29:PHE:CZ	1:A:34:ILE:HG13	2.47	0.50
2:B:34:TYR:HB3	2:B:54:LEU:HD13	1.93	0.50
1:A:23:LYS:CA	1:A:77:THR:HG22	2.42	0.50
1:A:4:LEU:HD23	1:A:102:ILE:CG2	2.42	0.50
2:B:10:LEU:HG	2:B:12:VAL:HG13	1.93	0.49
2:B:16:GLU:N	2:B:16:GLU:OE1	2.46	0.49
1:A:62:LYS:HG2	1:A:63:PHE:CD1	2.47	0.48
1:A:87:THR:HG23	1:A:87:THR:O	2.14	0.48
2:B:112:ARG:NH1	2:B:113:THR:O	2.47	0.48
1:A:52:ILE:HG22	1:A:53:ILE:HG22	1.96	0.47
3:C:14:VAL:HG22	3:C:121:VAL:HG12	1.97	0.47
2:B:41:LEU:HD22	2:B:90:TYR:CE2	2.50	0.47
2:B:66:PHE:CE1	2:B:79:ILE:HG12	2.50	0.47
2:B:41:LEU:HB2	2:B:51:LEU:HD22	1.97	0.46

Continued on next page...

Continued from previous page...

Atom-1	Atom-2	Interatomic distance (Å)	Clash overlap (Å)
3:C:93:ARG:HA	3:C:121:VAL:HG21	1.97	0.46
2:B:50:LEU:HD12	2:B:51:LEU:N	2.30	0.46
1:A:49:GLY:HA3	1:A:69:ILE:CD1	2.46	0.46
2:B:13:THR:HG23	2:B:14:PRO:HD2	1.98	0.46
1:A:61:GLN:HA	1:A:61:GLN:OE1	2.15	0.45
1:A:124:LEU:HD11	1:A:141:LEU:HB2	1.99	0.45
2:B:23:ARG:HH11	2:B:23:ARG:HG2	1.80	0.45
2:B:52:ILE:HD11	2:B:77:LEU:HD13	1.98	0.45
1:A:4:LEU:HD23	1:A:102:ILE:HG22	2.00	0.44
2:B:65:ARG:CD	2:B:81:ARG:HG3	2.47	0.44
2:B:41:LEU:O	2:B:49:GLN:HG2	2.18	0.44
1:A:170:LEU:HD12	1:A:176:TYR:CE1	2.53	0.43
1:A:95:GLU:HB3	1:A:100:PHE:CD1	2.53	0.43
3:C:12:VAL:HG11	3:C:22:VAL:HG22	2.01	0.43
1:A:96:TRP:O	1:A:97:ALA:HB3	2.18	0.43
1:A:54:PHE:HE2	3:C:5:TRP:HB2	1.84	0.43
2:B:1:ILE:HD12	2:B:94:GLN:NE2	2.33	0.43
2:B:12:VAL:HG23	2:B:12:VAL:O	2.19	0.43
2:B:41:LEU:HD22	2:B:90:TYR:HE2	1.82	0.42
1:A:82:LEU:HD12	1:A:82:LEU:HA	1.93	0.42
2:B:64:ASP:O	2:B:64:ASP:OD1	2.36	0.42
2:B:3:LEU:HD21	2:B:94:GLN:HB3	2.02	0.42
2:B:37:LEU:HD23	2:B:37:LEU:O	2.20	0.42
2:B:77:LEU:HD12	2:B:78:LYS:H	1.84	0.42
1:A:38:ARG:HB2	1:A:48:MET:HE3	2.00	0.42
2:B:170:GLN:HG3	2:B:175:SER:HA	2.01	0.42
2:B:5:GLN:NE2	2:B:92:CYS:SG	2.90	0.42
2:B:62:VAL:HG12	2:B:63:PRO:O	2.19	0.41
2:B:170:GLN:CG	2:B:175:SER:HA	2.50	0.41
2:B:20:ILE:HG22	2:B:39:TRP:CH2	2.55	0.41
2:B:184:THR:O	2:B:184:THR:HG23	2.20	0.41
3:C:86:LEU:C	3:C:86:LEU:HD23	2.46	0.41
3:C:35:LYS:O	3:C:105:ARG:NH2	2.48	0.41
1:A:121:VAL:HG12	1:A:122:PHE:N	2.36	0.40
2:B:26:GLN:C	2:B:73:THR:HG22	2.46	0.40
2:B:40:TYR:CE1	2:B:93:MET:CE	3.04	0.40
3:C:14:VAL:CG2	3:C:121:VAL:HG12	2.51	0.40
1:A:18:VAL:HG22	1:A:19:LYS:N	2.35	0.40

There are no symmetry-related clashes.

5.3 Torsion angles

5.3.1 Protein backbone

In the following table, the Percentiles column shows the percent Ramachandran outliers of the chain as a percentile score with respect to all PDB entries followed by that with respect to all EM entries.

The Analysed column shows the number of residues for which the backbone conformation was analysed, and the total number of residues.

Mol	Chain	Analysed	Favoured	Allowed	Outliers	Percentiles	
1	A	210/222 (95%)	202 (96%)	8 (4%)	0	100	100
2	B	215/219 (98%)	210 (98%)	5 (2%)	0	100	100
3	C	121/277 (44%)	118 (98%)	3 (2%)	0	100	100
All	All	546/718 (76%)	530 (97%)	16 (3%)	0	100	100

There are no Ramachandran outliers to report.

5.3.2 Protein sidechains

In the following table, the Percentiles column shows the percent sidechain outliers of the chain as a percentile score with respect to all PDB entries followed by that with respect to all EM entries.

The Analysed column shows the number of residues for which the sidechain conformation was analysed, and the total number of residues.

Mol	Chain	Analysed	Rotameric	Outliers	Percentiles	
1	A	177/185 (96%)	175 (99%)	2 (1%)	65	75
2	B	192/194 (99%)	192 (100%)	0	100	100
3	C	113/244 (46%)	112 (99%)	1 (1%)	70	76
All	All	482/623 (77%)	479 (99%)	3 (1%)	81	80

All (3) residues with a non-rotameric sidechain are listed below:

Mol	Chain	Res	Type
1	A	148[A]	GLU
1	A	148[B]	GLU
3	C	84	CYS

Sometimes sidechains can be flipped to improve hydrogen bonding and reduce clashes. All (5) such

sidechains are listed below:

Mol	Chain	Res	Type
2	B	30	HIS
2	B	35	ASN
3	C	9	GLN
3	C	70	GLN
3	C	82	ASN

5.3.3 RNA [i](#)

There are no RNA molecules in this entry.

5.4 Non-standard residues in protein, DNA, RNA chains [i](#)

There are no non-standard protein/DNA/RNA residues in this entry.

5.5 Carbohydrates [i](#)

There are no oligosaccharides in this entry.

5.6 Ligand geometry [i](#)

There are no ligands in this entry.

5.7 Other polymers [i](#)

There are no such residues in this entry.

5.8 Polymer linkage issues [i](#)

There are no chain breaks in this entry.

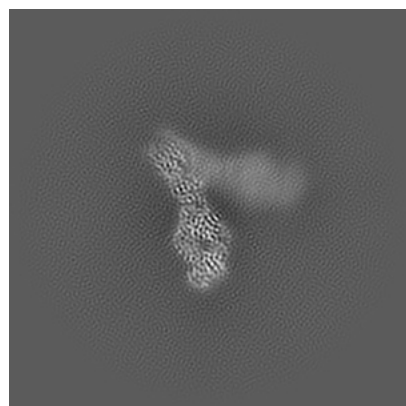
6 Map visualisation [i](#)

This section contains visualisations of the EMDB entry EMD-48326. These allow visual inspection of the internal detail of the map and identification of artifacts.

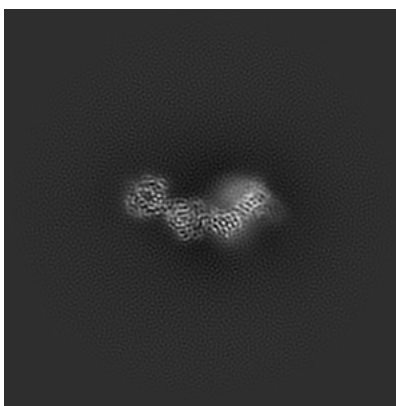
Images derived from a raw map, generated by summing the deposited half-maps, are presented below the corresponding image components of the primary map to allow further visual inspection and comparison with those of the primary map.

6.1 Orthogonal projections [i](#)

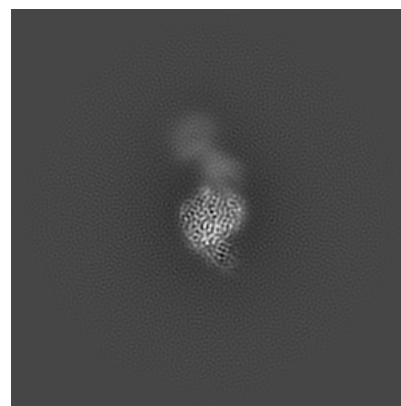
6.1.1 Primary map



X

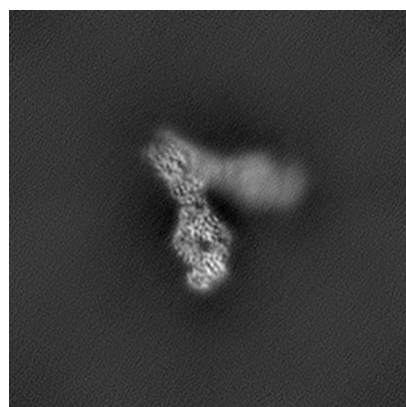


Y

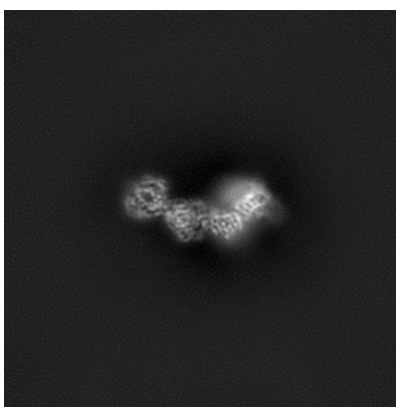


Z

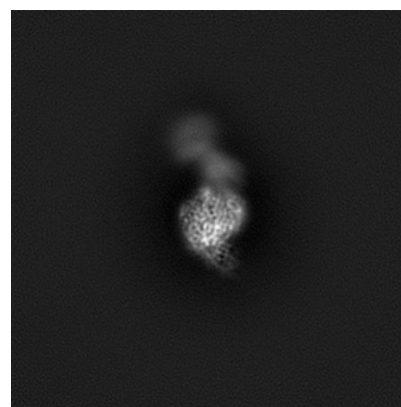
6.1.2 Raw map



X



Y

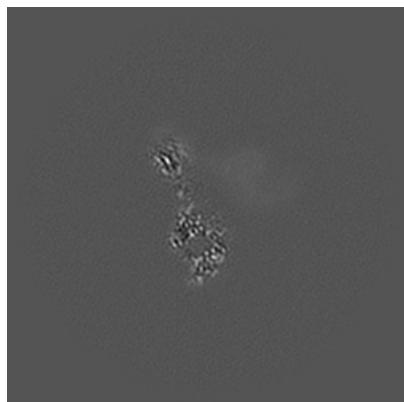


Z

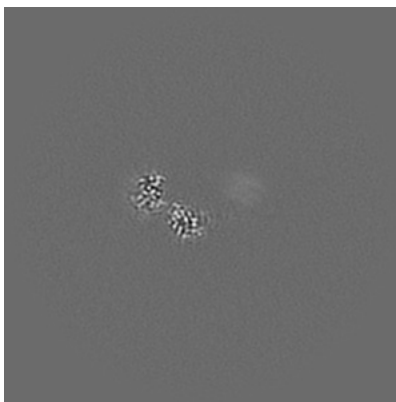
The images above show the map projected in three orthogonal directions.

6.2 Central slices [i](#)

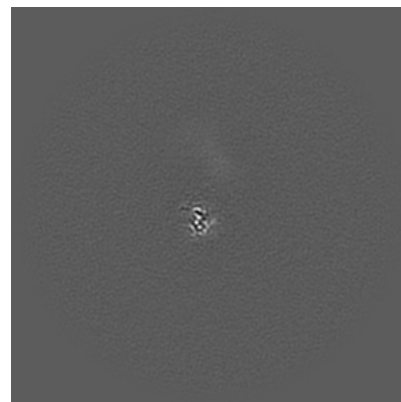
6.2.1 Primary map



X Index: 128

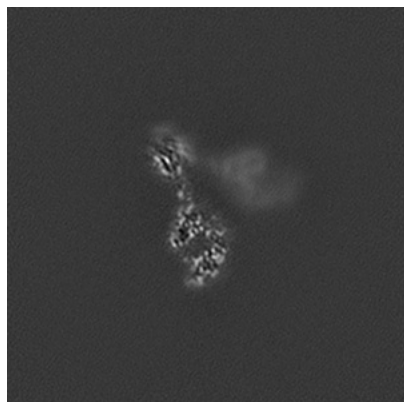


Y Index: 128

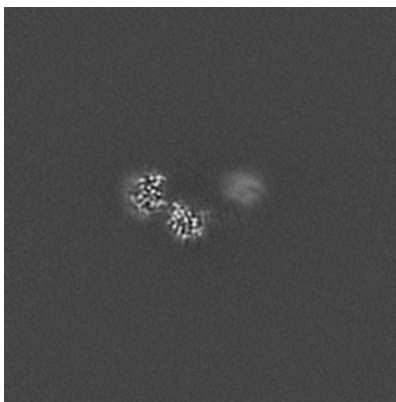


Z Index: 128

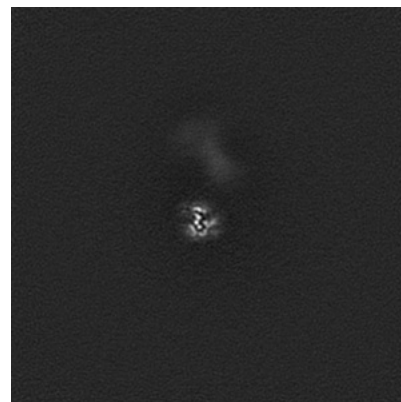
6.2.2 Raw map



X Index: 128



Y Index: 128

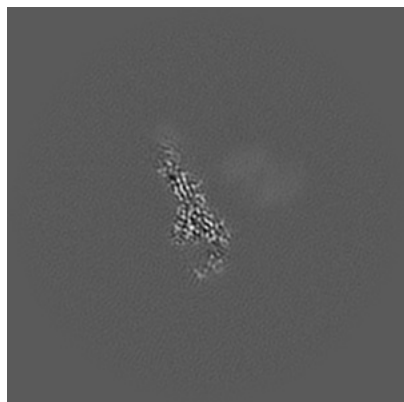


Z Index: 128

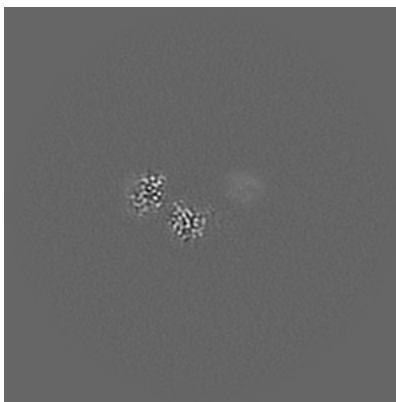
The images above show central slices of the map in three orthogonal directions.

6.3 Largest variance slices [i](#)

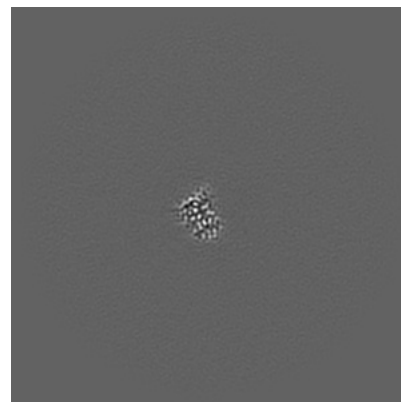
6.3.1 Primary map



X Index: 123

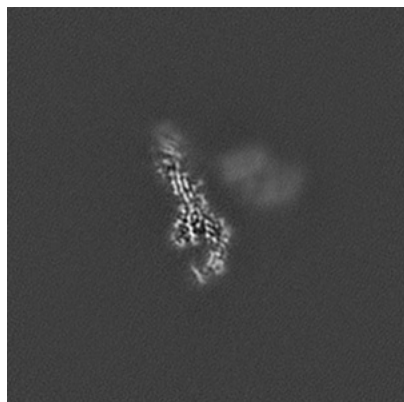


Y Index: 127

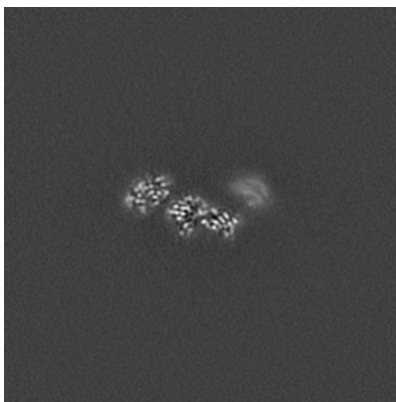


Z Index: 114

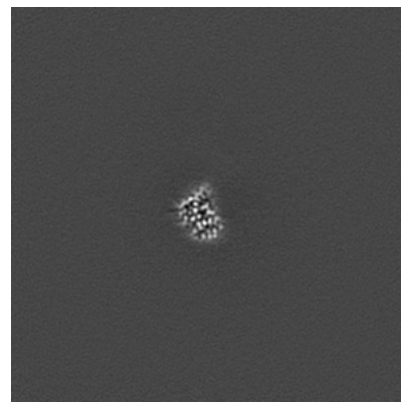
6.3.2 Raw map



X Index: 124



Y Index: 118

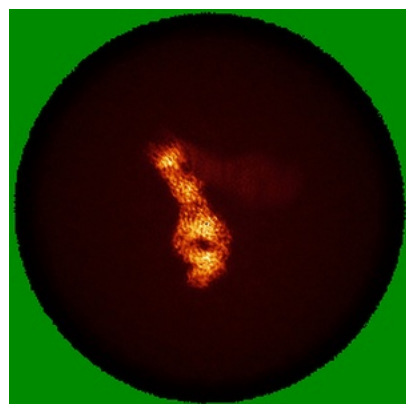


Z Index: 114

The images above show the largest variance slices of the map in three orthogonal directions.

6.4 Orthogonal standard-deviation projections (False-color) [i](#)

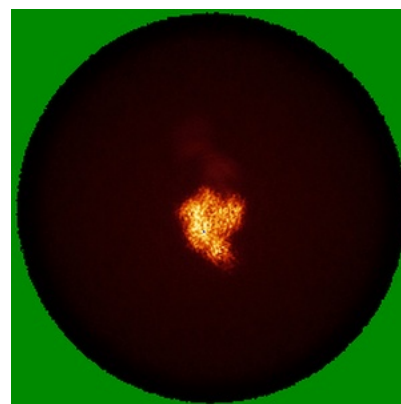
6.4.1 Primary map



X

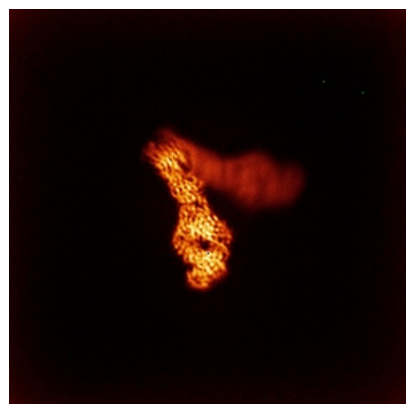


Y

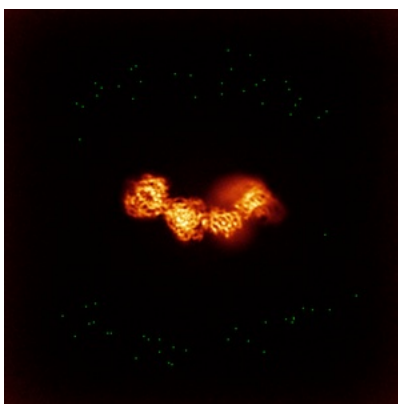


Z

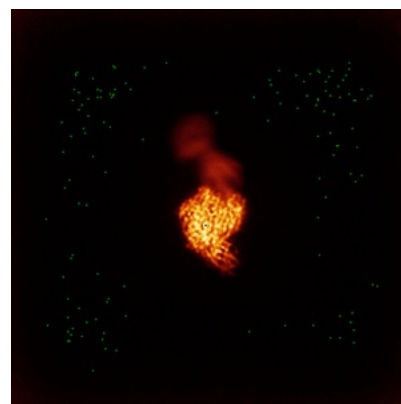
6.4.2 Raw map



X



Y

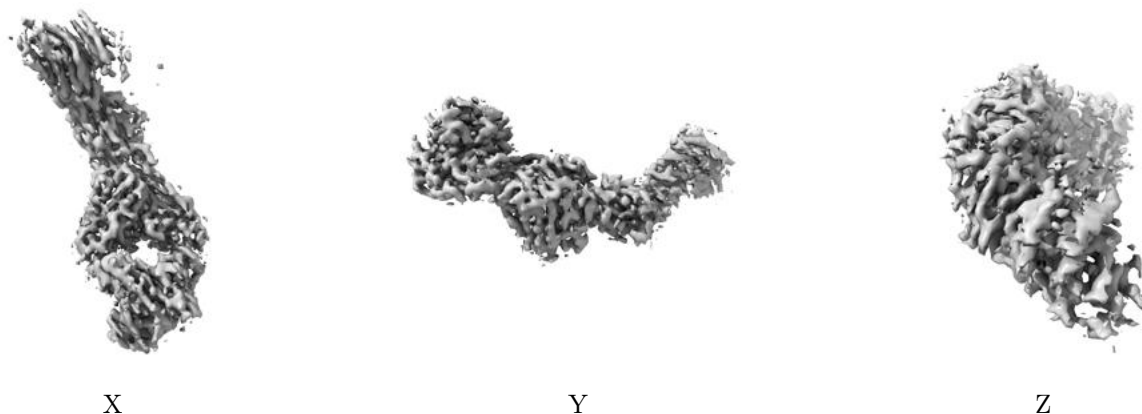


Z

The images above show the map standard deviation projections with false color in three orthogonal directions. Minimum values are shown in green, max in blue, and dark to light orange shades represent small to large values respectively.

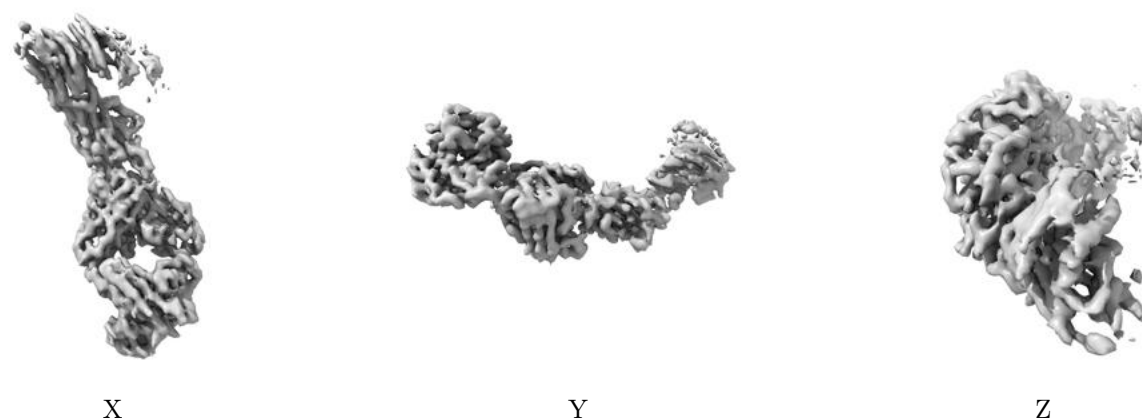
6.5 Orthogonal surface views [i](#)

6.5.1 Primary map



The images above show the 3D surface view of the map at the recommended contour level 0.44. These images, in conjunction with the slice images, may facilitate assessment of whether an appropriate contour level has been provided.

6.5.2 Raw map



These images show the 3D surface of the raw map. The raw map's contour level was selected so that its surface encloses the same volume as the primary map does at its recommended contour level.

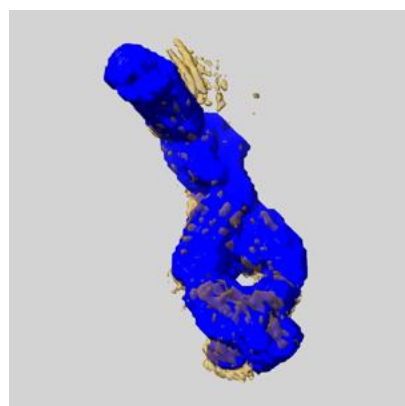
6.6 Mask visualisation [i](#)

This section shows the 3D surface view of the primary map at 50% transparency overlaid with the specified mask at 0% transparency

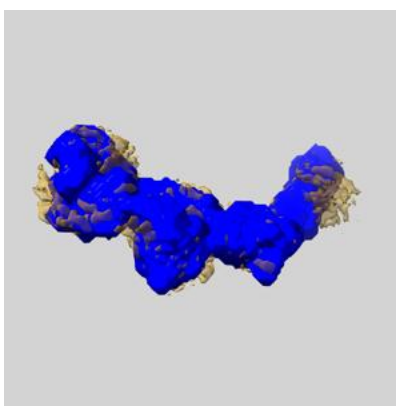
A mask typically either:

- Encompasses the whole structure
- Separates out a domain, a functional unit, a monomer or an area of interest from a larger structure

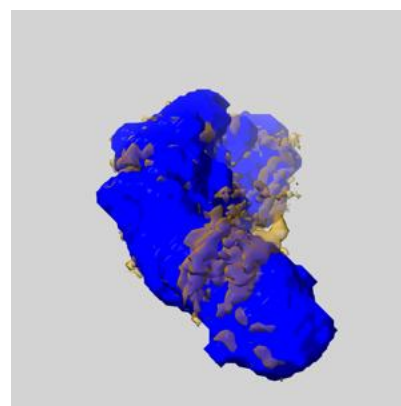
6.6.1 emd_48326_msk_1.map [i](#)



X



Y

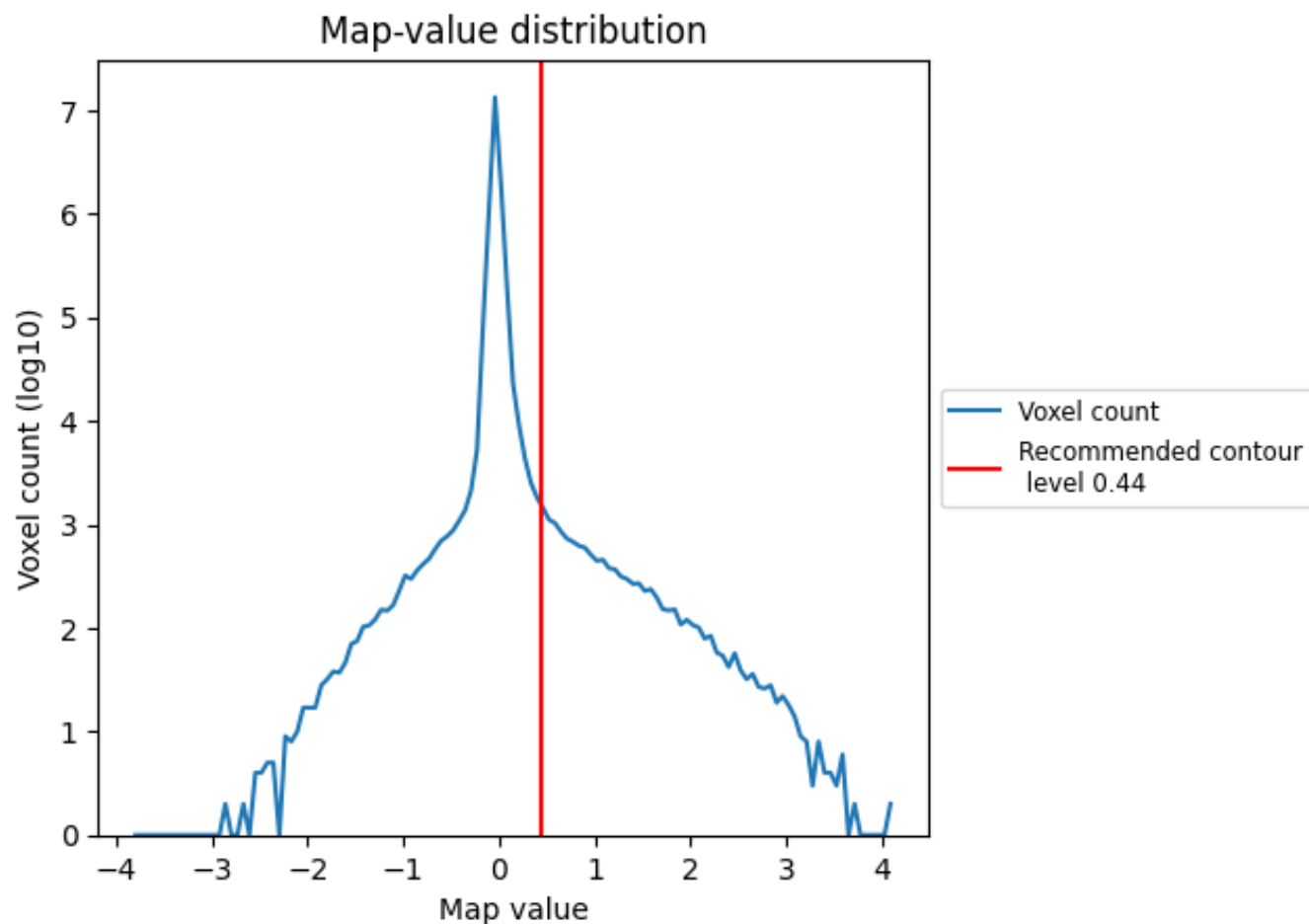


Z

7 Map analysis [i](#)

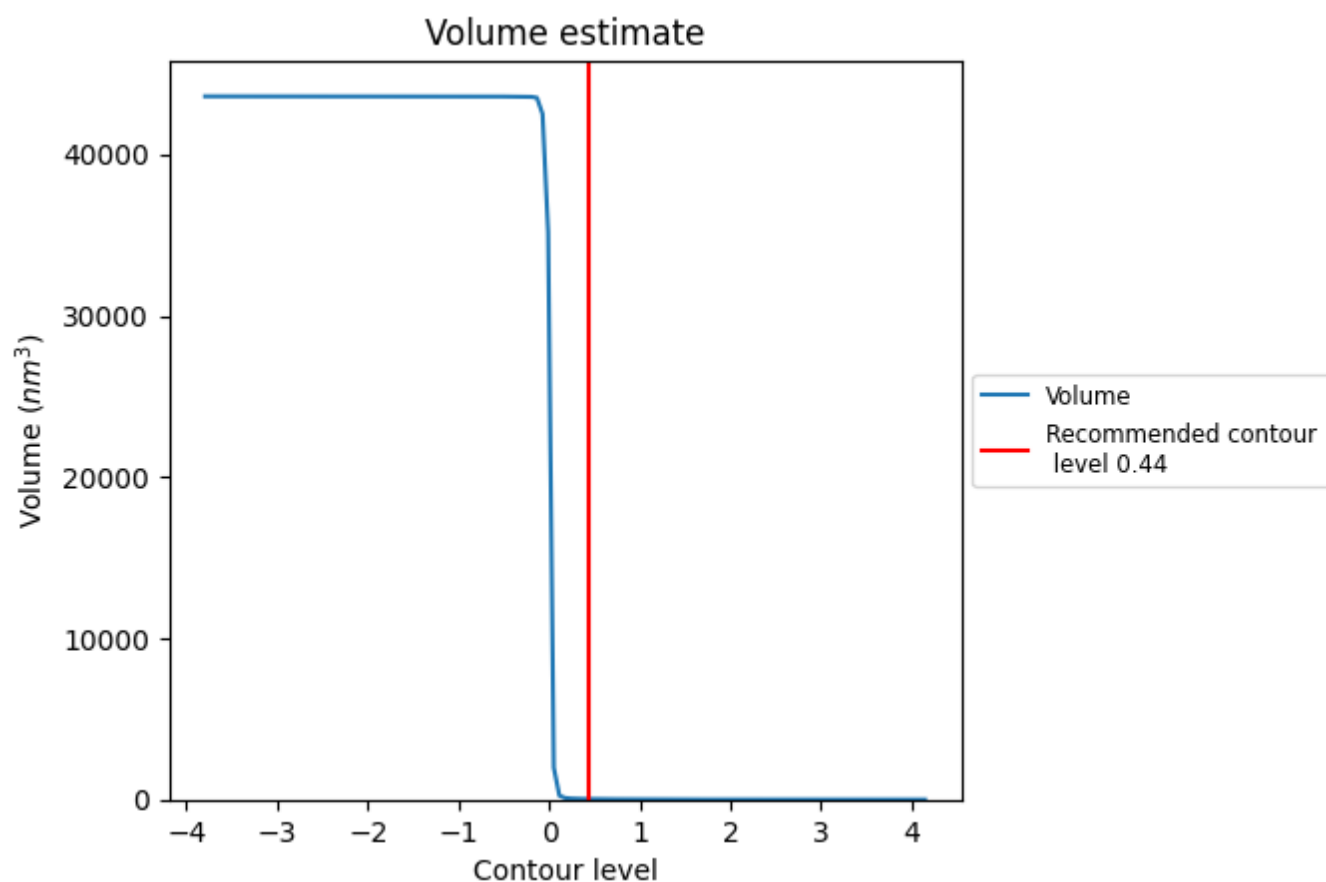
This section contains the results of statistical analysis of the map.

7.1 Map-value distribution [i](#)



The map-value distribution is plotted in 128 intervals along the x-axis. The y-axis is logarithmic. A spike in this graph at zero usually indicates that the volume has been masked.

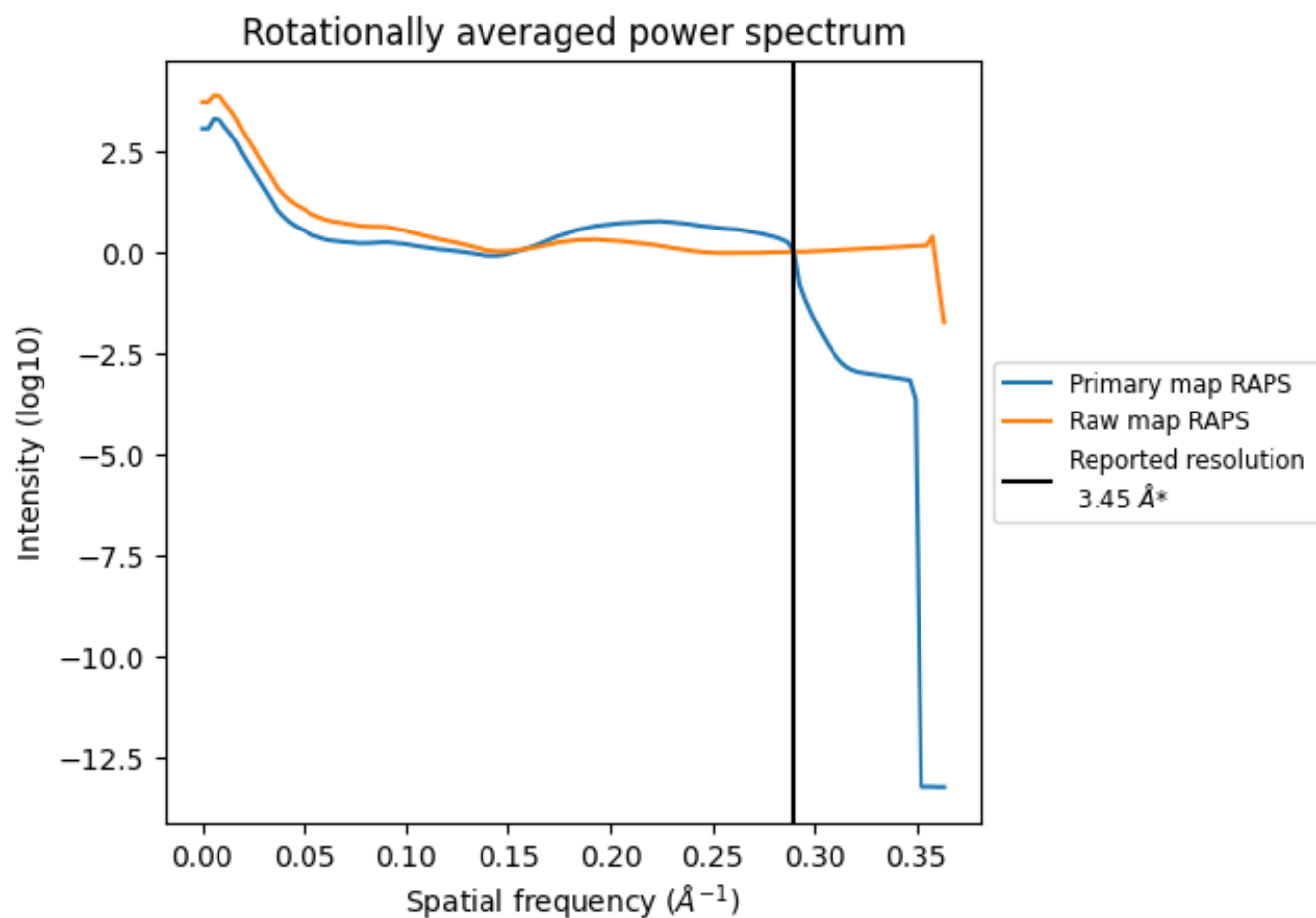
7.2 Volume estimate [i](#)



The volume at the recommended contour level is 34 nm³; this corresponds to an approximate mass of 31 kDa.

The volume estimate graph shows how the enclosed volume varies with the contour level. The recommended contour level is shown as a vertical line and the intersection between the line and the curve gives the volume of the enclosed surface at the given level.

7.3 Rotationally averaged power spectrum ⓘ

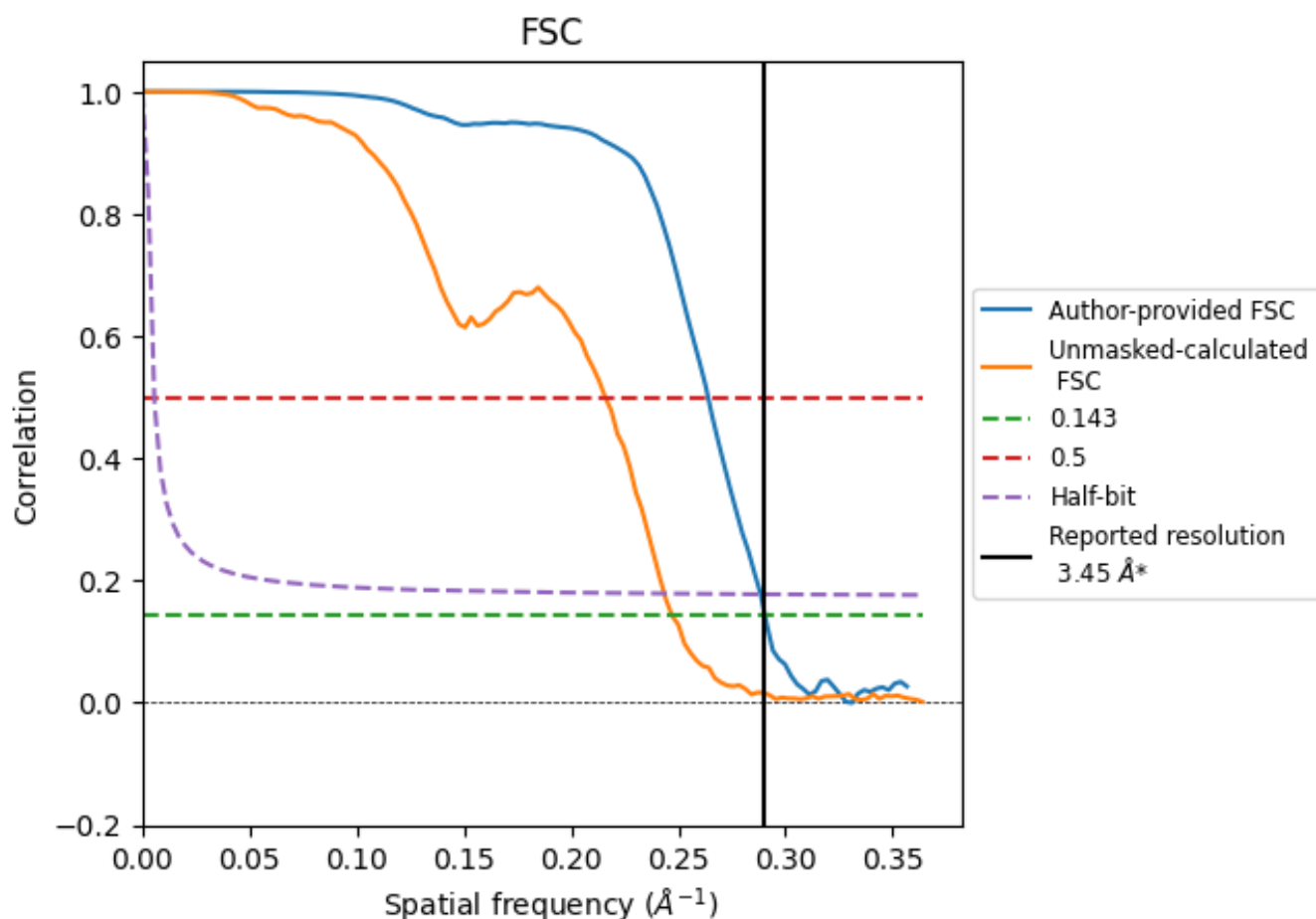


*Reported resolution corresponds to spatial frequency of 0.290 \AA^{-1}

8 Fourier-Shell correlation [i](#)

Fourier-Shell Correlation (FSC) is the most commonly used method to estimate the resolution of single-particle and subtomogram-averaged maps. The shape of the curve depends on the imposed symmetry, mask and whether or not the two 3D reconstructions used were processed from a common reference. The reported resolution is shown as a black line. A curve is displayed for the half-bit criterion in addition to lines showing the 0.143 gold standard cut-off and 0.5 cut-off.

8.1 FSC [i](#)



*Reported resolution corresponds to spatial frequency of 0.290 \AA^{-1}

8.2 Resolution estimates [i](#)

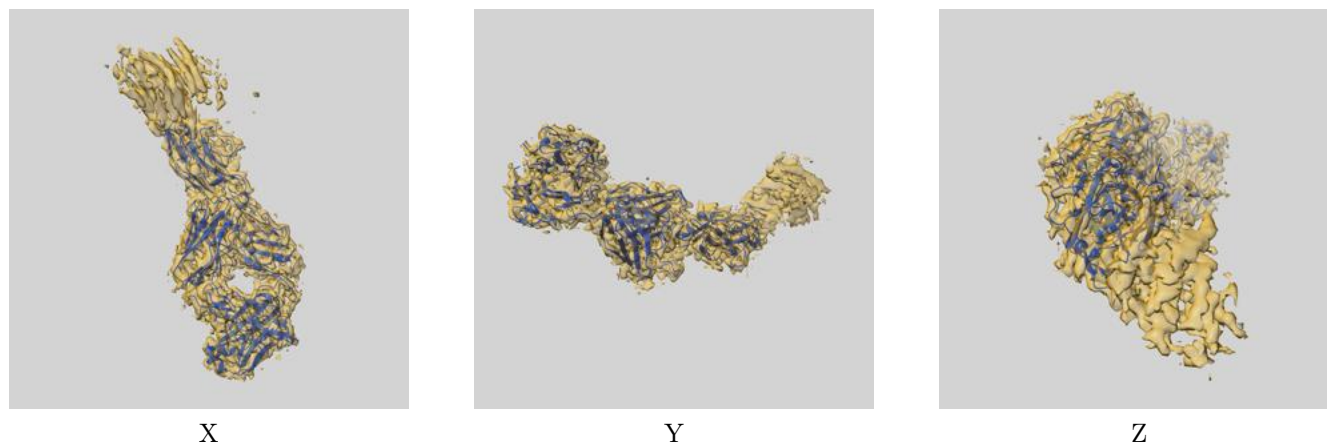
Resolution estimate (Å)	Estimation criterion (FSC cut-off)		
	0.143	0.5	Half-bit
Reported by author	3.45	-	-
Author-provided FSC curve	3.44	3.79	3.47
Unmasked-calculated*	4.05	4.63	4.11

*Resolution estimate based on FSC curve calculated by comparison of deposited half-maps. The value from deposited half-maps intersecting FSC 0.143 CUT-OFF 4.05 differs from the reported value 3.45 by more than 10 %

9 Map-model fit [i](#)

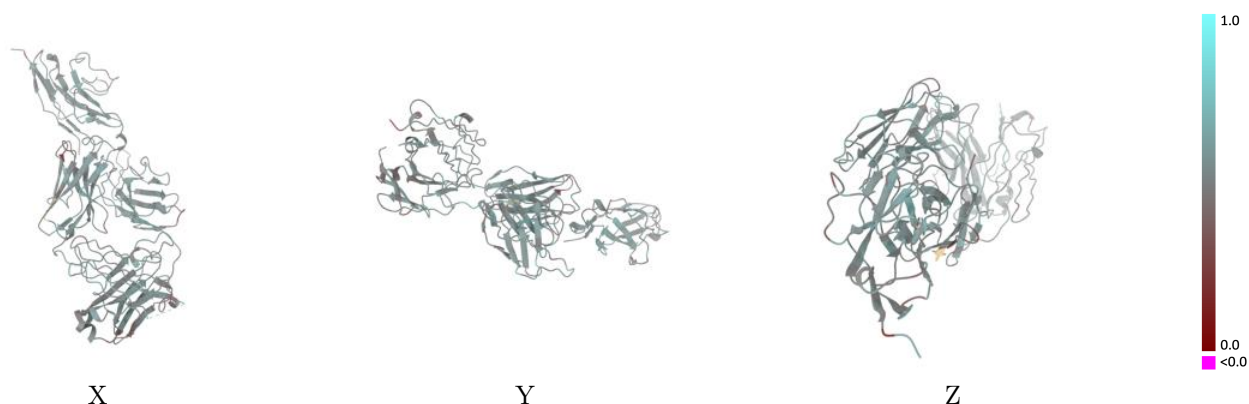
This section contains information regarding the fit between EMDB map EMD-48326 and PDB model 9MKG. Per-residue inclusion information can be found in [section 3](#) on [page 5](#).

9.1 Map-model overlay [i](#)



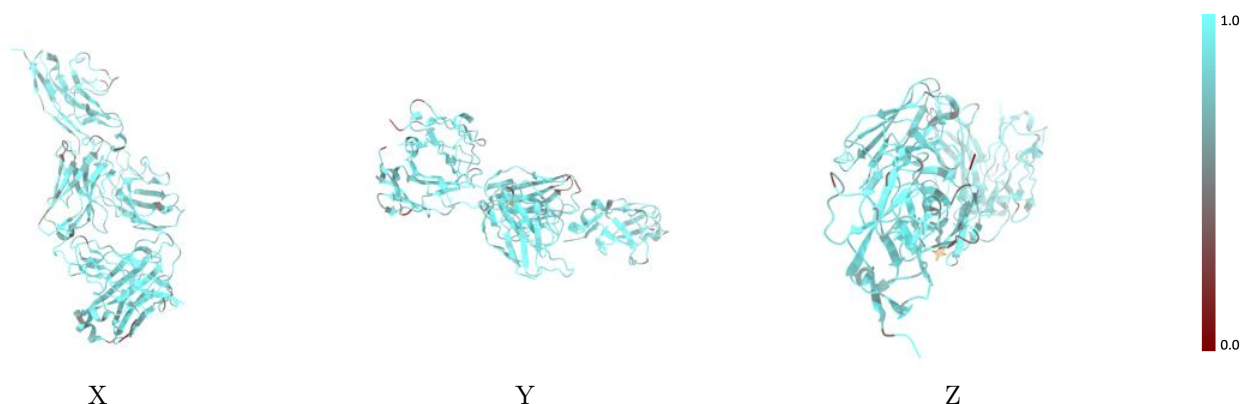
The images above show the 3D surface view of the map at the recommended contour level 0.44 at 50% transparency in yellow overlaid with a ribbon representation of the model coloured in blue. These images allow for the visual assessment of the quality of fit between the atomic model and the map.

9.2 Q-score mapped to coordinate model [i](#)



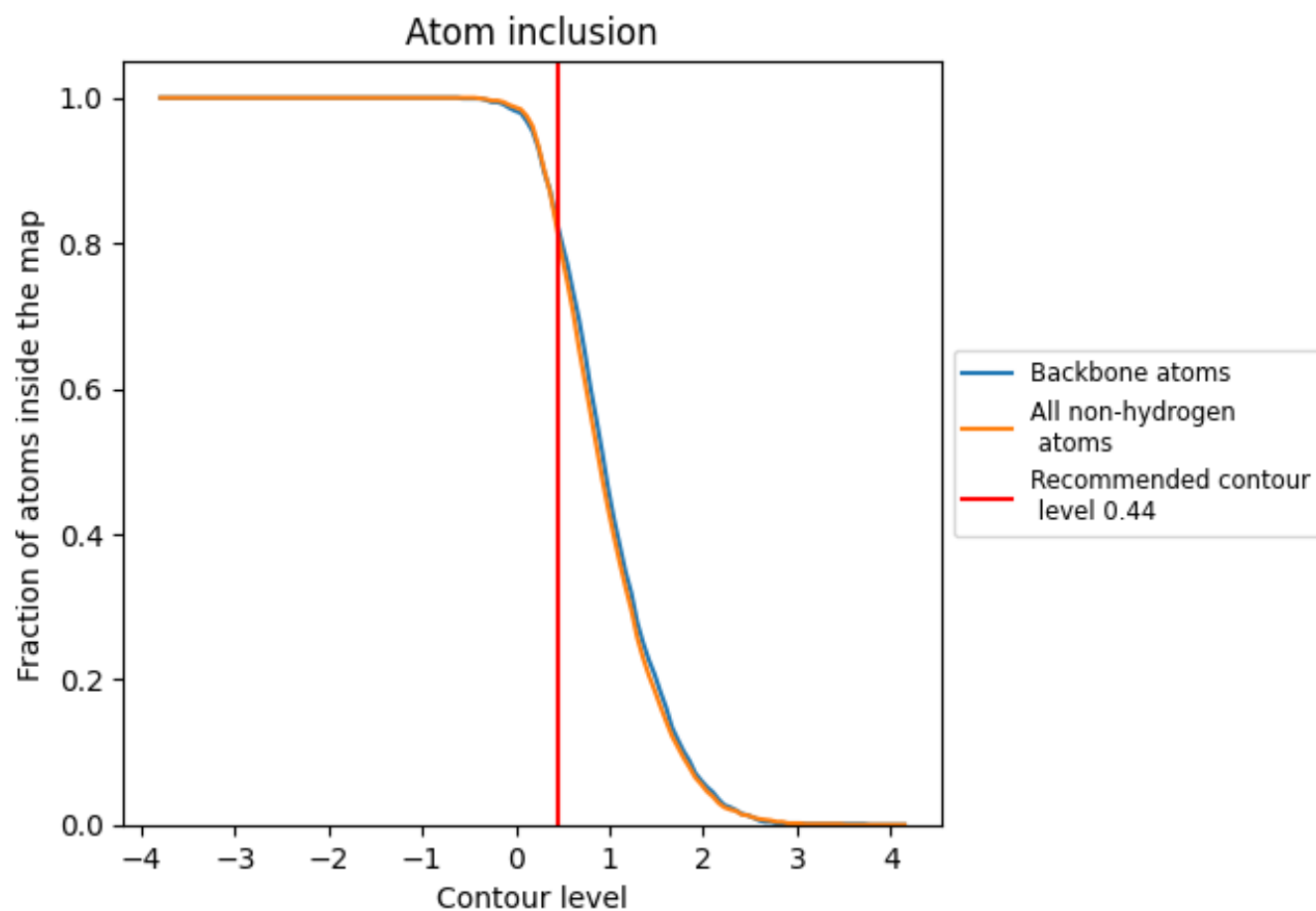
The images above show the model with each residue coloured according to its Q-score. This shows their resolvability in the map with higher Q-score values reflecting better resolvability. Please note: Q-score is calculating the resolvability of atoms, and thus high values are only expected at resolutions at which atoms can be resolved. Low Q-score values may therefore be expected for many entries.

9.3 Atom inclusion mapped to coordinate model [i](#)



The images above show the model with each residue coloured according to its atom inclusion. This shows to what extent they are inside the map at the recommended contour level (0.44).

9.4 Atom inclusion [i](#)



At the recommended contour level, 83% of all backbone atoms, 82% of all non-hydrogen atoms, are inside the map.

9.5 Map-model fit summary ⓘ

The table lists the average atom inclusion at the recommended contour level (0.44) and Q-score for the entire model and for each chain.

Chain	Atom inclusion	Q-score
All	<div><div></div></div> 0.8190	<div><div></div></div> 0.5220
A	<div><div></div></div> 0.8270	<div><div></div></div> 0.5210
B	<div><div></div></div> 0.8280	<div><div></div></div> 0.5250
C	<div><div></div></div> 0.8100	<div><div></div></div> 0.5170

