



# Full wwPDB X-ray Structure Validation Report ⓘ

Jun 15, 2026 – 01:18 pm BST

PDB ID : 9HOJ / pdb\_00009hoj  
Title : Variant H283A of Orotidine 5'-monophosphate decarboxylase-domain of human UMPS in complex with the substrate OMP and the product UMP at 1.15 Angstrom resolution  
Authors : Kirck, L.L.; Tittmann, K.  
Deposited on : 2024-12-12  
Resolution : 1.15 Å(reported)

This is a Full wwPDB X-ray Structure Validation Report for a publicly released PDB entry.

We welcome your comments at [validation@mail.wwpdb.org](mailto:validation@mail.wwpdb.org)

A user guide is available at

<https://www.wwpdb.org/validation/2017/XrayValidationReportHelp>

with specific help available everywhere you see the ⓘ symbol.

The types of validation reports are described at

<http://www.wwpdb.org/validation/2017/FAQs#types>.

---

The following versions of software and data (see [references ⓘ](#)) were used in the production of this report:

MolProbity	:	4-5-2 with Phenix2.0
Mogul	:	1.8.4, CSD as541be (2020)
Xtriage (Phenix)	:	2.0
EDS	:	3.0
Buster-report	:	wwPDB partial adaption of 1.1.7 (2018)
Percentile statistics	:	20250101.v01 (using entries in the PDB archive January 1st 2025)
CCP4	:	9.0.010 (Gargrove)
Density-Fitness	:	1.0.12
Ideal geometry (proteins)	:	Engh & Huber (2001)
Ideal geometry (DNA, RNA)	:	Parkinson et al. (1996)
Validation Pipeline (wwPDB-VP)	:	2.49

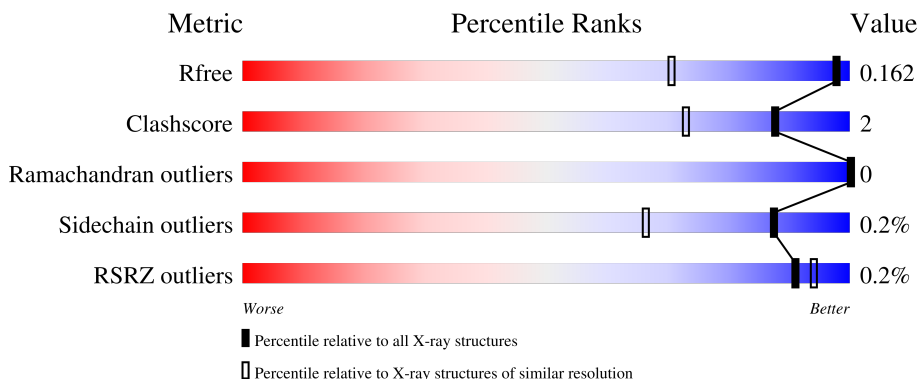
# 1 Overall quality at a glance

The following experimental techniques were used to determine the structure:

## *X-RAY DIFFRACTION*

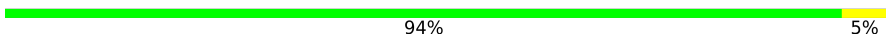
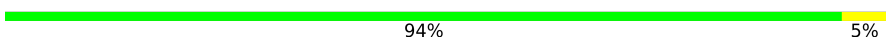
The reported resolution of this entry is 1.15 Å.

Percentile scores (ranging between 0-100) for global validation metrics of the entry are shown in the following graphic. The table shows the number of entries on which the scores are based.



Metric	Whole archive (#Entries)	Similar resolution (#Entries, resolution range(Å))
$R_{free}$	180053	1380 (1.16-1.12)
Clashscore	190562	1393 (1.16-1.12)
Ramachandran outliers	187476	1369 (1.16-1.12)
Sidechain outliers	187428	1369 (1.16-1.12)
RSRZ outliers	180081	1379 (1.16-1.12)

The table below summarises the geometric issues observed across the polymeric chains and their fit to the electron density. The red, orange, yellow and green segments of the lower bar indicate the fraction of residues that contain outliers for  $\geq 3$ , 2, 1 and 0 types of geometric quality criteria respectively. A grey segment represents the fraction of residues that are not modelled. The numeric value for each fraction is indicated below the corresponding segment, with a dot representing fractions  $\leq 5\%$ . The upper red bar (where present) indicates the fraction of residues that have poor fit to the electron density. The numeric value is given above the bar.

Mol	Chain	Length	Quality of chain
1	A	258	 94% 5%
1	B	258	 94% 5%

## 2 Entry composition [i](#)

There are 5 unique types of molecules in this entry. The entry contains 9819 atoms, of which 4610 are hydrogens and 0 are deuteriums.

In the tables below, the ZeroOcc column contains the number of atoms modelled with zero occupancy, the AltConf column contains the number of residues with at least one atom in alternate conformation and the Trace column contains the number of residues modelled with at most 2 atoms.

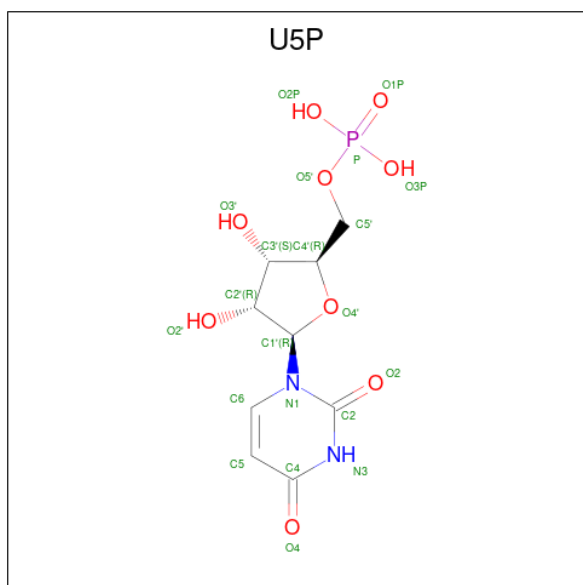
- Molecule 1 is a protein called Uridine 5'-monophosphate synthase.

Mol	Chain	Residues	Atoms						ZeroOcc	AltConf	Trace
1	A	257	Total	C	H	N	O	S	0	53	0
			4441	1379	2252	381	413	16			
1	B	257	Total	C	H	N	O	S	0	61	0
			4536	1406	2302	390	422	16			

There are 4 discrepancies between the modelled and reference sequences:

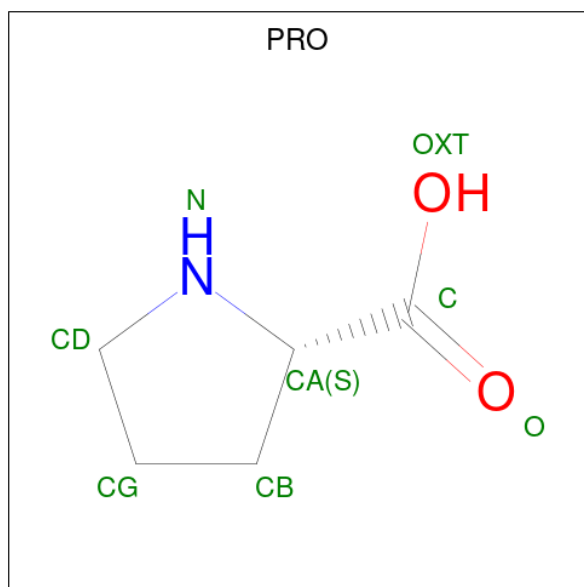
Chain	Residue	Modelled	Actual	Comment	Reference
A	223	MET	-	initiating methionine	UNP P11172
A	283	ALA	HIS	engineered mutation	UNP P11172
B	223	MET	-	initiating methionine	UNP P11172
B	283	ALA	HIS	engineered mutation	UNP P11172

- Molecule 2 is URIDINE-5'-MONOPHOSPHATE (CCD ID: U5P) (formula:  $C_9H_{13}N_2O_9P$ ) (labeled as "Ligand of Interest" by depositor).



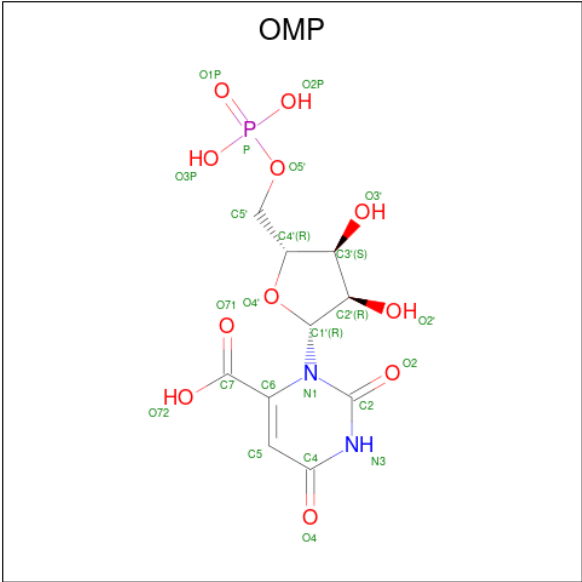
Mol	Chain	Residues	Atoms						ZeroOcc	AltConf
2	A	1	Total	C	H	N	O	P	0	1
			32	9	11	2	9	1		
2	B	1	Total	C	H	N	O	P	0	1
			32	9	11	2	9	1		

- Molecule 3 is PROLINE (CCD ID: PRO) (formula:  $C_5H_9NO_2$ ).



Mol	Chain	Residues	Atoms					ZeroOcc	AltConf
3	A	1	Total	C	H	N	O	0	0
			15	5	7	1	2		
3	B	1	Total	C	H	N	O	0	0
			15	5	7	1	2		

- Molecule 4 is OROTIDINE-5'-MONOPHOSPHATE (CCD ID: OMP) (formula:  $C_{10}H_{13}N_2O_{11}P$ ) (labeled as "Ligand of Interest" by depositor).



Mol	Chain	Residues	Atoms						ZeroOcc	AltConf
4	A	1	Total	C	H	N	O	P	0	1
			34	10	10	2	11	1		
4	B	1	Total	C	H	N	O	P	0	1
			34	10	10	2	11	1		

- Molecule 5 is water.

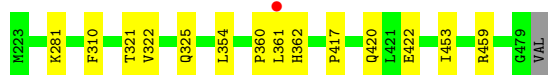
Mol	Chain	Residues	Atoms		ZeroOcc	AltConf
5	A	332	Total	O	0	11
			334	334		
5	B	346	Total	O	0	15
			346	346		

### 3 Residue-property plots [i](#)

These plots are drawn for all protein, RNA, DNA and oligosaccharide chains in the entry. The first graphic for a chain summarises the proportions of the various outlier classes displayed in the second graphic. The second graphic shows the sequence view annotated by issues in geometry and electron density. Residues are color-coded according to the number of geometric quality criteria for which they contain at least one outlier: green = 0, yellow = 1, orange = 2 and red = 3 or more. A red dot above a residue indicates a poor fit to the electron density ( $RSRZ > 2$ ). Stretches of 2 or more consecutive residues without any outlier are shown as a green connector. Residues present in the sample, but not in the model, are shown in grey.

- Molecule 1: Uridine 5'-monophosphate synthase

Chain A:  94% 5%



- Molecule 1: Uridine 5'-monophosphate synthase

Chain B:  94% 5%



## 4 Data and refinement statistics

Property	Value	Source
Space group	P 1 21 1	Depositor
Cell constants a, b, c, $\alpha$ , $\beta$ , $\gamma$	69.82Å 62.15Å 69.82Å 90.00° 112.64° 90.00°	Depositor
Resolution (Å)	32.22 – 1.15 32.22 – 1.15	Depositor EDS
% Data completeness (in resolution range)	98.1 (32.22-1.15) 87.0 (32.22-1.15)	Depositor EDS
$R_{merge}$	(Not available)	Depositor
$R_{sym}$	(Not available)	Depositor
$\langle I/\sigma(I) \rangle$ <sup>1</sup>	0.95 (at 1.15Å)	Xtriage
Refinement program	PHENIX (1.20.1_4487: ???)	Depositor
R, $R_{free}$	0.136 , 0.162 0.137 , 0.162	Depositor DCC
$R_{free}$ test set	9584 reflections (5.00%)	wwPDB-VP
Wilson B-factor (Å <sup>2</sup> )	11.3	Xtriage
Anisotropy	0.371	Xtriage
Bulk solvent $k_{sol}$ (e/Å <sup>3</sup> ), $B_{sol}$ (Å <sup>2</sup> )	0.40 , 47.1	EDS
L-test for twinning <sup>2</sup>	$\langle  L  \rangle = 0.49$ , $\langle L^2 \rangle = 0.32$	Xtriage
Estimated twinning fraction	0.468 for l,-k,h	Xtriage
$F_o, F_c$ correlation	0.98	EDS
Total number of atoms	9819	wwPDB-VP
Average B, all atoms (Å <sup>2</sup> )	18.0	wwPDB-VP

Xtriage's analysis on translational NCS is as follows: *The largest off-origin peak in the Patterson function is 5.81% of the height of the origin peak. No significant pseudotranslation is detected.*

<sup>1</sup>Intensities estimated from amplitudes.

<sup>2</sup>Theoretical values of  $\langle |L| \rangle$ ,  $\langle L^2 \rangle$  for acentric reflections are 0.5, 0.333 respectively for untwinned datasets, and 0.375, 0.2 for perfectly twinned datasets.

## 5 Model quality

### 5.1 Standard geometry

Bond lengths and bond angles in the following residue types are not validated in this section: OMP, CSS, U5P

The Z score for a bond length (or angle) is the number of standard deviations the observed value is removed from the expected value. A bond length (or angle) with  $|Z| > 5$  is considered an outlier worth inspection. RMSZ is the root-mean-square of all Z scores of the bond lengths (or angles).

Mol	Chain	Bond lengths		Bond angles	
		RMSZ	# Z  >5	RMSZ	# Z  >5
1	A	0.41	0/2416	0.63	0/3245
1	B	0.42	0/2490	0.62	0/3343
All	All	0.41	0/4906	0.63	0/6588

There are no bond length outliers.

There are no bond angle outliers.

There are no chirality outliers.

There are no planarity outliers.

### 5.2 Too-close contacts

In the following table, the Non-H and H(model) columns list the number of non-hydrogen atoms and hydrogen atoms in the chain respectively. The H(added) column lists the number of hydrogen atoms added and optimized by MolProbity. The Clashes column lists the number of clashes within the asymmetric unit, whereas Symm-Clashes lists symmetry-related clashes.

Mol	Chain	Non-H	H(model)	H(added)	Clashes	Symm-Clashes
1	A	2189	2252	2033	8	0
1	B	2234	2302	2044	7	0
2	A	21	11	11	0	0
2	B	21	11	11	0	0
3	A	8	7	7	0	0
3	B	8	7	7	0	0
4	A	24	10	10	3	0
4	B	24	10	10	1	0
5	A	334	0	0	0	0
5	B	346	0	0	0	0
All	All	5209	4610	4133	18	0



The all-atom clashscore is defined as the number of clashes found per 1000 atoms (including hydrogen atoms). The all-atom clashscore for this structure is 2.

All (18) close contacts within the same asymmetric unit are listed below, sorted by their clash magnitude.

Atom-1	Atom-2	Interatomic distance (Å)	Clash overlap (Å)
1:B:453:ILE:O	1:B:459:ARG:HG3	2.13	0.49
1:A:420[B]:GLN:HG3	1:A:422:GLU:O	2.12	0.49
1:A:361:LEU:C	1:A:362[B]:HIS:CG	2.90	0.49
1:B:361:LEU:C	1:B:362[A]:HIS:CG	2.90	0.48
1:A:281:LYS:HA	1:A:310:PHE:O	2.14	0.48
1:A:453:ILE:O	1:A:459:ARG:HG3	2.15	0.46
4:A:503[A]:OMP:H1'	4:A:503[A]:OMP:O72	2.15	0.46
4:A:503[A]:OMP:O2	4:A:503[A]:OMP:H2'	2.16	0.45
1:A:321[B]:THR:HG22	1:A:325:GLN:NE2	2.32	0.45
1:B:359[A]:LEU:HB2	1:B:360:PRO:HD3	1.99	0.45
1:B:281:LYS:HA	1:B:310:PHE:O	2.17	0.44
1:B:348:SER:HA	1:B:389[B]:MET:HE3	2.00	0.44
1:B:224[B]:GLU:HG2	1:B:478:LEU:HD23	2.00	0.43
4:B:503[A]:OMP:O71	4:B:503[A]:OMP:H1'	2.18	0.42
1:A:417:PRO:HG3	4:A:503[A]:OMP:C5	2.50	0.42
1:A:360:PRO:O	1:A:362[B]:HIS:CE1	2.73	0.41
1:B:355[A]:GLN:HG3	1:B:359[A]:LEU:HG	2.02	0.41
1:A:322[A]:VAL:HG22	1:A:354:LEU:HD21	2.02	0.41

There are no symmetry-related clashes.

## 5.3 Torsion angles [i](#)

### 5.3.1 Protein backbone [i](#)

In the following table, the Percentiles column shows the percent Ramachandran outliers of the chain as a percentile score with respect to all X-ray entries followed by that with respect to entries of similar resolution.

The Analysed column shows the number of residues for which the backbone conformation was analysed, and the total number of residues.

Mol	Chain	Analysed	Favoured	Allowed	Outliers	Percentiles	
1	A	307/258 (119%)	302 (98%)	5 (2%)	0	100	100
1	B	315/258 (122%)	309 (98%)	6 (2%)	0	100	100
All	All	622/516 (120%)	611 (98%)	11 (2%)	0	100	100

There are no Ramachandran outliers to report.

### 5.3.2 Protein sidechains ⓘ

In the following table, the Percentiles column shows the percent sidechain outliers of the chain as a percentile score with respect to all X-ray entries followed by that with respect to entries of similar resolution.

The Analysed column shows the number of residues for which the sidechain conformation was analysed, and the total number of residues.

Mol	Chain	Analysed	Rotameric	Outliers	Percentiles	
1	A	252/208 (121%)	252 (100%)	0	100	100
1	B	260/208 (125%)	260 (100%)	0	100	100
All	All	512/416 (123%)	512 (100%)	0	87	100

There are no protein residues with a non-rotameric sidechain to report.

Sometimes sidechains can be flipped to improve hydrogen bonding and reduce clashes. All (5) such sidechains are listed below:

Mol	Chain	Res	Type
1	A	325	GLN
1	B	320	ASN
1	B	325	GLN
1	B	431	GLN
1	B	433	ASN

### 5.3.3 RNA ⓘ

There are no RNA molecules in this entry.

## 5.4 Non-standard residues in protein, DNA, RNA chains ⓘ

2 non-standard protein/DNA/RNA residues are modelled in this entry.

In the following table, the Counts columns list the number of bonds (or angles) for which Mogul statistics could be retrieved, the number of bonds (or angles) that are observed in the model and the number of bonds (or angles) that are defined in the Chemical Component Dictionary. The Link column lists molecule types, if any, to which the group is linked. The Z score for a bond length (or angle) is the number of standard deviations the observed value is removed from the expected value. A bond length (or angle) with  $|Z| > 2$  is considered an outlier worth inspection. RMSZ is the root-mean-square of all Z scores of the bond lengths (or angles).

Mol	Type	Chain	Res	Link	Bond lengths			Bond angles		
					Counts	RMSZ	$\# Z  > 2$	Counts	RMSZ	$\# Z  > 2$
1	CSS	A	304	1	4,6,7	1.13	0	1,6,8	0.19	0
1	CSS	B	304	1	4,6,7	1.20	1 (25%)	1,6,8	0.31	0

In the following table, the Chirals column lists the number of chiral outliers, the number of chiral centers analysed, the number of these observed in the model and the number defined in the Chemical Component Dictionary. Similar counts are reported in the Torsion and Rings columns. '-' means no outliers of that kind were identified.

Mol	Type	Chain	Res	Link	Chirals	Torsions	Rings
1	CSS	A	304	1	-	0/1/5/7	-
1	CSS	B	304	1	-	0/1/5/7	-

All (1) bond length outliers are listed below:

Mol	Chain	Res	Type	Atoms	Z	Observed(Å)	Ideal(Å)
1	B	304	CSS	CB-SG	-2.07	1.74	1.81

There are no bond angle outliers.

There are no chirality outliers.

There are no torsion outliers.

There are no ring outliers.

No monomer is involved in short contacts.

## 5.5 Carbohydrates [i](#)

There are no oligosaccharides in this entry.

## 5.6 Ligand geometry [i](#)

6 ligands are modelled in this entry.

In the following table, the Counts columns list the number of bonds (or angles) for which Mogul statistics could be retrieved, the number of bonds (or angles) that are observed in the model and the number of bonds (or angles) that are defined in the Chemical Component Dictionary. The Link column lists molecule types, if any, to which the group is linked. The Z score for a bond length (or angle) is the number of standard deviations the observed value is removed from the expected value. A bond length (or angle) with  $|Z| > 2$  is considered an outlier worth inspection. RMSZ is the root-mean-square of all Z scores of the bond lengths (or angles).

Mol	Type	Chain	Res	Link	Bond lengths			Bond angles		
					Counts	RMSZ	# Z  > 2	Counts	RMSZ	# Z  > 2
2	U5P	B	501[B]	-	22,22,22	0.66	0	33,33,33	0.84	1 (3%)
4	OMP	B	503[A]	-	24,25,25	0.77	1 (4%)	34,38,38	1.09	3 (8%)
3	PRO	B	502	-	8,8,8	0.95	1 (12%)	10,10,10	1.76	3 (30%)
3	PRO	A	502	-	8,8,8	0.92	1 (12%)	10,10,10	1.28	2 (20%)
2	U5P	A	501[B]	-	22,22,22	0.59	0	33,33,33	0.81	1 (3%)
4	OMP	A	503[A]	-	24,25,25	0.78	1 (4%)	34,38,38	1.08	3 (8%)

In the following table, the Chirals column lists the number of chiral outliers, the number of chiral centers analysed, the number of these observed in the model and the number defined in the Chemical Component Dictionary. Similar counts are reported in the Torsion and Rings columns. '-' means no outliers of that kind were identified.

Mol	Type	Chain	Res	Link	Chirals	Torsions	Rings
2	U5P	B	501[B]	-	-	4/10/26/26	0/2/2/2
4	OMP	B	503[A]	-	-	1/14/30/30	0/2/2/2
3	PRO	B	502	-	-	2/4/11/11	0/1/1/1
3	PRO	A	502	-	-	0/4/11/11	0/1/1/1
2	U5P	A	501[B]	-	-	4/10/26/26	0/2/2/2
4	OMP	A	503[A]	-	-	3/14/30/30	0/2/2/2

All (4) bond length outliers are listed below:

Mol	Chain	Res	Type	Atoms	Z	Observed(Å)	Ideal(Å)
4	A	503[A]	OMP	O72-C7	-2.90	1.22	1.30
4	B	503[A]	OMP	O72-C7	-2.90	1.22	1.30
3	B	502	PRO	OXT-C	-2.15	1.23	1.30
3	A	502	PRO	OXT-C	-2.14	1.23	1.30

All (13) bond angle outliers are listed below:

Mol	Chain	Res	Type	Atoms	Z	Observed(°)	Ideal(°)
4	B	503[A]	OMP	O72-C7-C6	3.53	117.95	112.42
4	A	503[A]	OMP	O72-C7-C6	3.48	117.88	112.42
3	B	502	PRO	O-C-CA	-3.11	112.05	122.26
3	B	502	PRO	C-CA-N	3.06	118.79	106.73
4	A	503[A]	OMP	O71-C7-C6	-2.94	117.26	123.57
4	B	503[A]	OMP	C6-C5-C4	2.89	120.92	118.83
4	A	503[A]	OMP	C6-C5-C4	2.80	120.86	118.83
4	B	503[A]	OMP	O71-C7-C6	-2.80	117.56	123.57
2	B	501[B]	U5P	O2P-P-O5'	-2.46	100.19	106.73

*Continued on next page...*

*Continued from previous page...*

Mol	Chain	Res	Type	Atoms	Z	Observed(°)	Ideal(°)
2	A	501[B]	U5P	O2P-P-O5'	-2.23	100.79	106.73
3	A	502	PRO	OXT-C-CA	2.23	120.81	113.40
3	B	502	PRO	OXT-C-CA	2.22	120.79	113.40
3	A	502	PRO	CD-N-CA	2.20	113.13	107.08

There are no chirality outliers.

All (14) torsion outliers are listed below:

Mol	Chain	Res	Type	Atoms
4	A	503[A]	OMP	C5-C6-C7-O71
4	A	503[A]	OMP	C5-C6-C7-O72
2	A	501[B]	U5P	O4'-C1'-N1-C6
2	B	501[B]	U5P	O4'-C1'-N1-C6
3	B	502	PRO	OXT-C-CA-CB
2	B	501[B]	U5P	O4'-C1'-N1-C2
4	A	503[A]	OMP	O4'-C4'-C5'-O5'
2	A	501[B]	U5P	O4'-C1'-N1-C2
3	B	502	PRO	O-C-CA-CB
4	B	503[A]	OMP	O4'-C4'-C5'-O5'
2	A	501[B]	U5P	O4'-C4'-C5'-O5'
2	B	501[B]	U5P	O4'-C4'-C5'-O5'
2	A	501[B]	U5P	C2'-C1'-N1-C2
2	B	501[B]	U5P	C2'-C1'-N1-C2

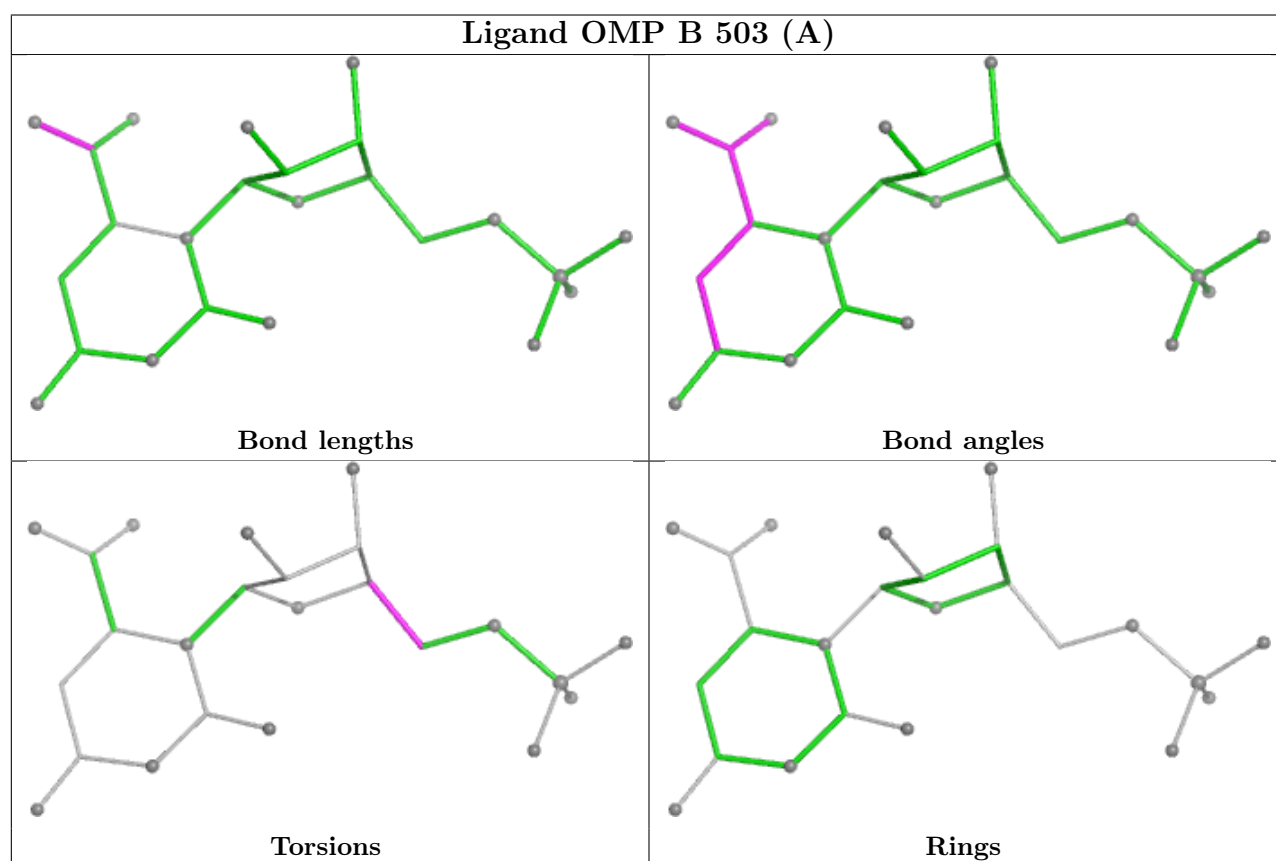
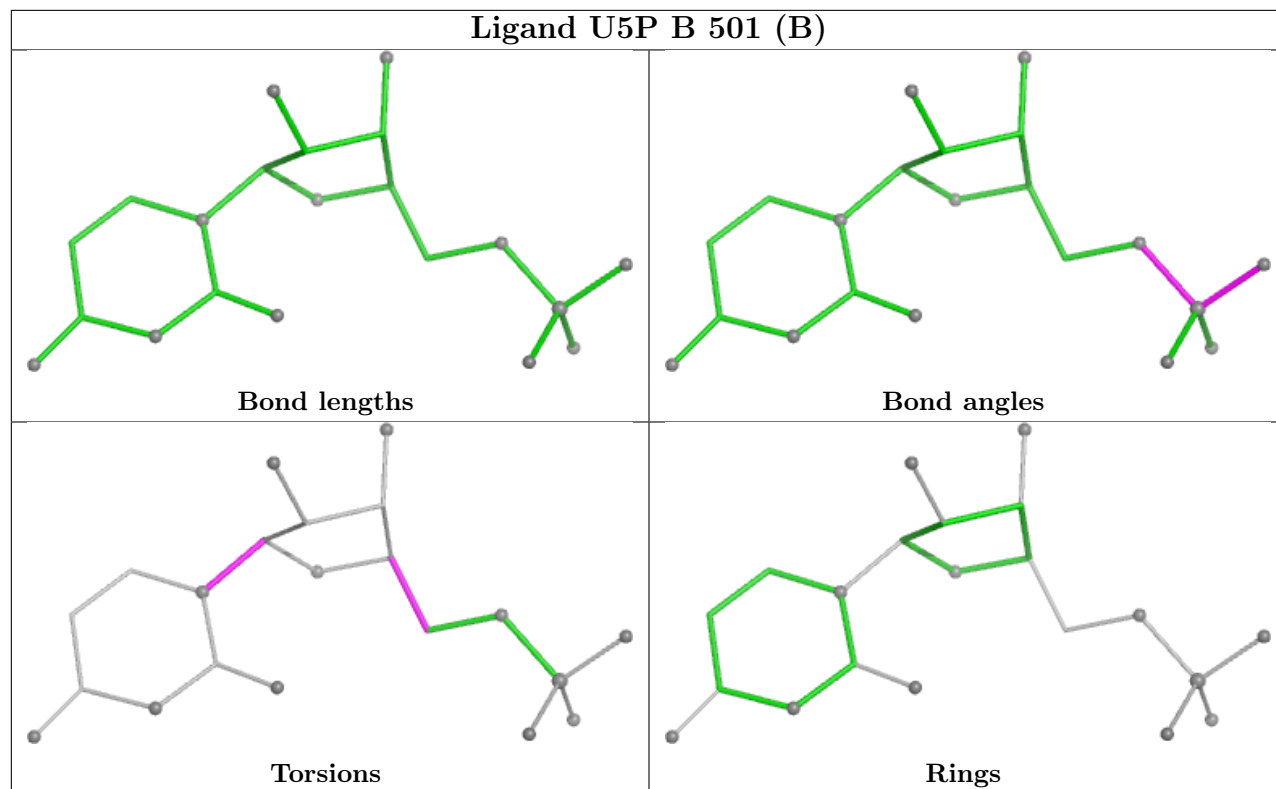
There are no ring outliers.

2 monomers are involved in 4 short contacts:

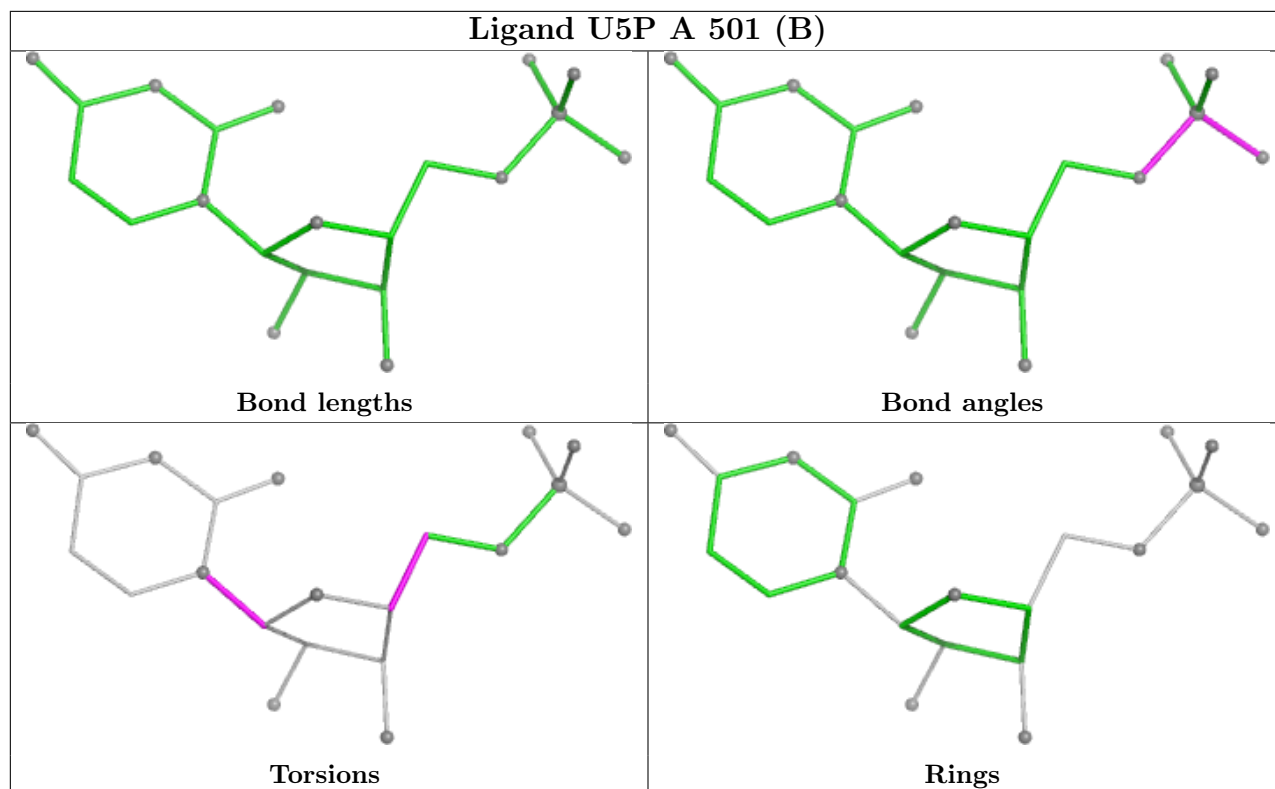
Mol	Chain	Res	Type	Clashes	Symm-Clashes
4	B	503[A]	OMP	1	0
4	A	503[A]	OMP	3	0

The following is a two-dimensional graphical depiction of Mogul quality analysis of bond lengths, bond angles, torsion angles, and ring geometry for all instances of the Ligand of Interest. In addition, ligands with molecular weight > 250 and outliers as shown on the validation Tables will also be included. For torsion angles, if less than 5% of the Mogul distribution of torsion angles is within 10 degrees of the torsion angle in question, then that torsion angle is considered an outlier. Any bond that is central to one or more torsion angles identified as an outlier by Mogul will be highlighted in the graph. For rings, the root-mean-square deviation (RMSD) between the ring in question and similar rings identified by Mogul is calculated over all ring torsion angles. If the average RMSD is greater than 60 degrees and the minimal RMSD between the ring in question and any Mogul-identified rings is also greater than 60 degrees, then that ring is considered an outlier. The outliers are highlighted in purple. The color gray indicates Mogul did not find sufficient

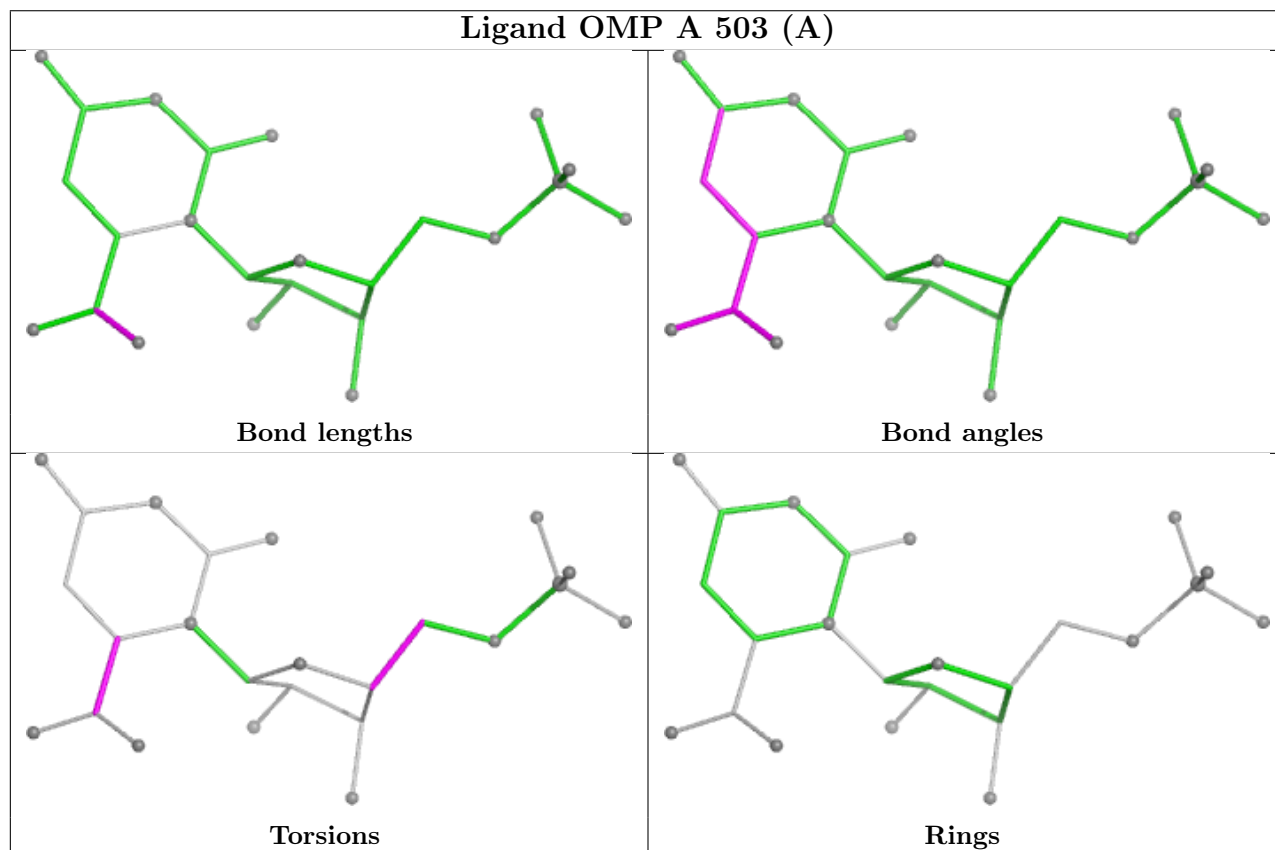
equivalents in the CSD to analyse the geometry.



## Ligand U5P A 501 (B)



## Ligand OMP A 503 (A)



## 5.7 Other polymers [i](#)

There are no such residues in this entry.

## 5.8 Polymer linkage issues [i](#)

There are no chain breaks in this entry.



## 6 Fit of model and data [i](#)

### 6.1 Protein, DNA and RNA chains [i](#)

In the following table, the column labelled ‘#RSRZ > 2’ contains the number (and percentage) of RSRZ outliers, followed by percent RSRZ outliers for the chain as percentile scores relative to all X-ray entries and entries of similar resolution. The OWAB column contains the minimum, median, 95<sup>th</sup> percentile and maximum values of the occupancy-weighted average B-factor per residue. The column labelled ‘Q < 0.9’ lists the number of (and percentage) of residues with an average occupancy less than 0.9.

Mol	Chain	Analysed	<RSRZ>	#RSRZ>2	OWAB(Å <sup>2</sup> )	Q<0.9
1	A	256/258 (99%)	-1.04	1 (0%) 88 93	6, 15, 27, 58	29 (11%)
1	B	256/258 (99%)	-1.07	0 100 100	6, 15, 23, 44	34 (13%)
All	All	512/516 (99%)	-1.06	1 (0%) 91 94	6, 15, 25, 58	63 (12%)

All (1) RSRZ outliers are listed below:

Mol	Chain	Res	Type	RSRZ
1	A	361	LEU	2.3

### 6.2 Non-standard residues in protein, DNA, RNA chains [i](#)

In the following table, the Atoms column lists the number of modelled atoms in the group and the number defined in the chemical component dictionary. The B-factors column lists the minimum, median, 95<sup>th</sup> percentile and maximum values of B factors of atoms in the group. The column labelled ‘Q < 0.9’ lists the number of atoms with occupancy less than 0.9.

Mol	Type	Chain	Res	Atoms	RSCC	RSR	B-factors(Å <sup>2</sup> )	Q<0.9
1	CSS	A	304	7/8	0.99	0.04	14,19,34,41	0
1	CSS	B	304	7/8	0.99	0.04	15,20,34,41	0

### 6.3 Carbohydrates [i](#)

There are no oligosaccharides in this entry.

### 6.4 Ligands [i](#)

In the following table, the Atoms column lists the number of modelled atoms in the group and the number defined in the chemical component dictionary. The B-factors column lists the minimum,

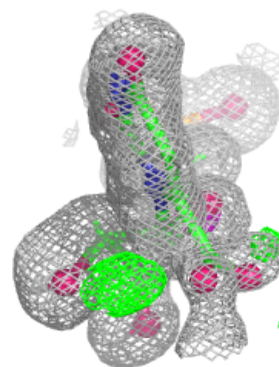
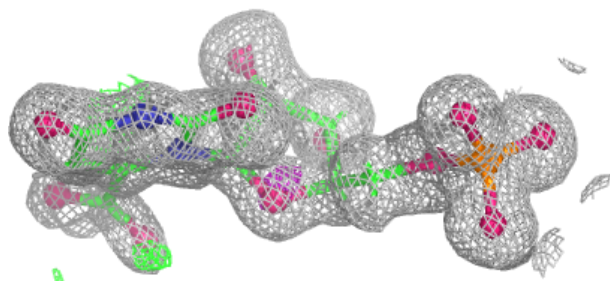
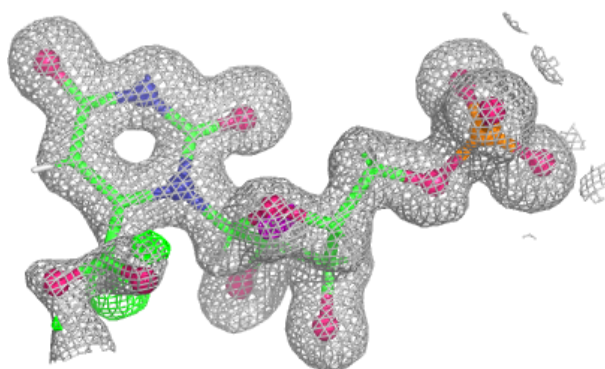
median, 95<sup>th</sup> percentile and maximum values of B factors of atoms in the group. The column labelled 'Q< 0.9' lists the number of atoms with occupancy less than 0.9.

Mol	Type	Chain	Res	Atoms	RSCC	RSR	B-factors(Å <sup>2</sup> )	Q<0.9
3	PRO	B	502	8/8	0.95	0.08	30,36,41,42	0
3	PRO	A	502	8/8	0.97	0.06	25,31,36,37	0
4	OMP	A	503[A]	24/24	0.98	0.05	19,19,23,24	34
4	OMP	B	503[A]	24/24	0.98	0.05	18,19,23,24	34
2	U5P	A	501[B]	21/21	1.00	0.02	9,11,16,21	32
2	U5P	B	501[B]	21/21	1.00	0.01	10,11,15,20	32

The following is a graphical depiction of the model fit to experimental electron density of all instances of the Ligand of Interest. In addition, ligands with molecular weight > 250 and outliers as shown on the geometry validation Tables will also be included. Each fit is shown from different orientation to approximate a three-dimensional view.

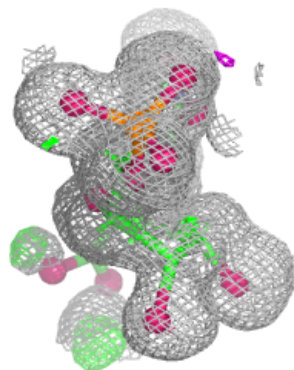
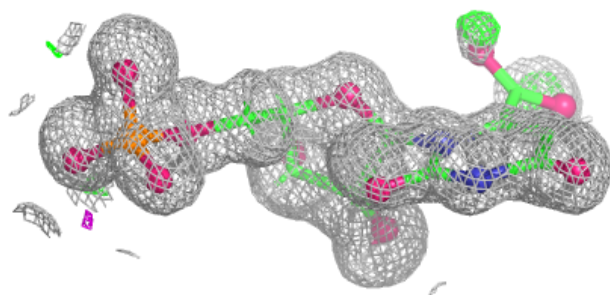
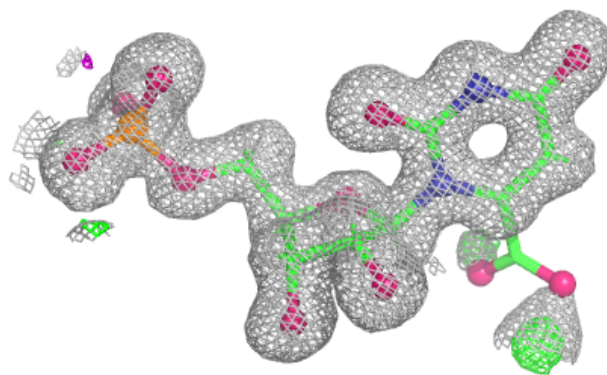
**Electron density around OMP A 503 (A):**

2mF<sub>o</sub>-DF<sub>c</sub> (at 0.7 rmsd) in gray  
mF<sub>o</sub>-DF<sub>c</sub> (at 3 rmsd) in purple (negative)  
and green (positive)

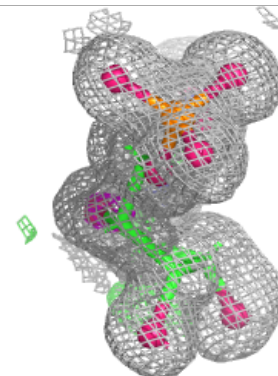
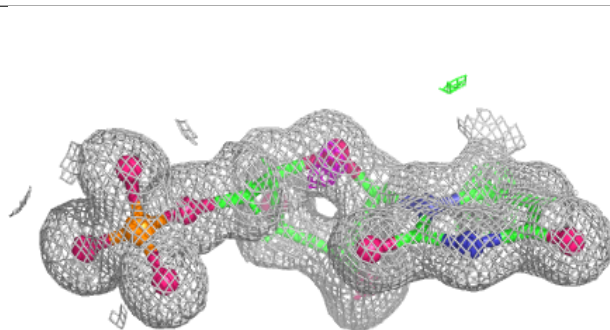
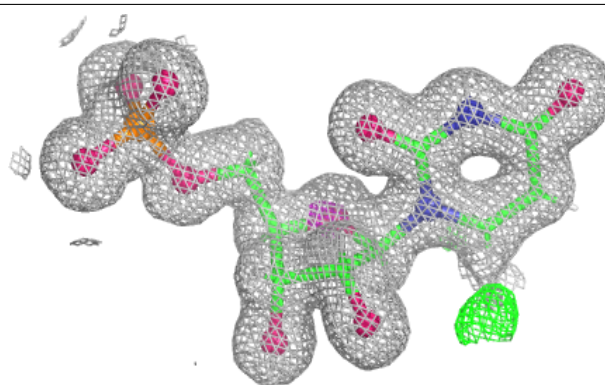


**Electron density around OMP B 503 (A):**

$2mF_o-DF_c$  (at 0.7 rmsd) in gray  
 $mF_o-DF_c$  (at 3 rmsd) in purple (negative)  
and green (positive)

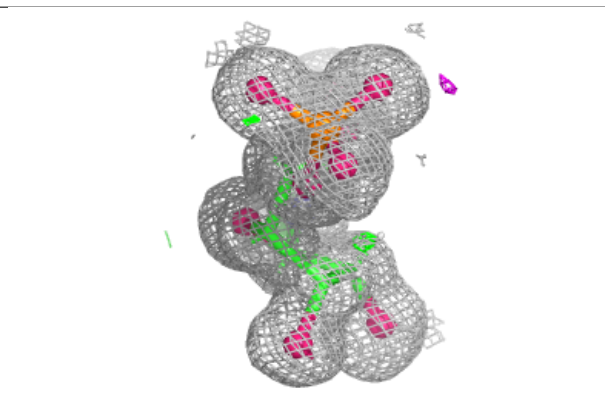
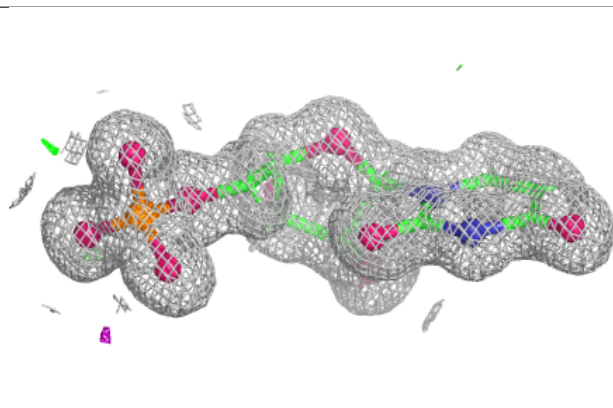
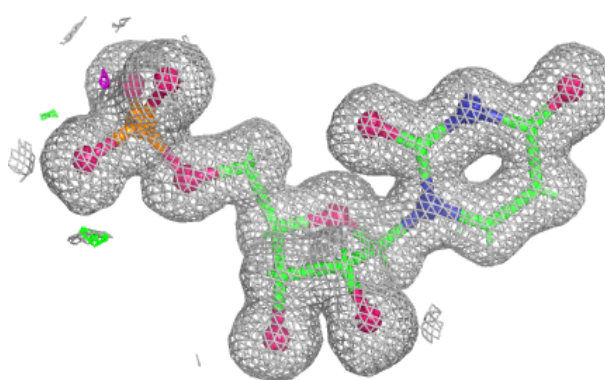
**Electron density around U5P A 501 (B):**

$2mF_o-DF_c$  (at 0.7 rmsd) in gray  
 $mF_o-DF_c$  (at 3 rmsd) in purple (negative)  
and green (positive)



**Electron density around U5P B 501 (B):**

$2mF_o-DF_c$  (at 0.7 rmsd) in gray  
 $mF_o-DF_c$  (at 3 rmsd) in purple (negative)  
and green (positive)



## 6.5 Other polymers [i](#)

There are no such residues in this entry.