



# Full wwPDB X-ray Structure Validation Report ⓘ

Mar 10, 2026 – 03:02 AM UTC

PDB ID : 8GQ1 / pdb\_00008gq1  
Title : HyHEL10 Fab complexed with hen egg lysozyme carrying arginine cluster in framework region of light chain.  
Authors : Matsuura, H.; Hirata, K.; Sakai, N.; Nakakido, M.; Tsumoto, K.  
Deposited on : 2022-08-28  
Resolution : 3.13 Å(reported)

This is a Full wwPDB X-ray Structure Validation Report for a publicly released PDB entry.

We welcome your comments at [validation@mail.wwpdb.org](mailto:validation@mail.wwpdb.org)

A user guide is available at

<https://www.wwpdb.org/validation/2017/XrayValidationReportHelp>

with specific help available everywhere you see the ⓘ symbol.

The types of validation reports are described at

<http://www.wwpdb.org/validation/2017/FAQs#types>.

---

The following versions of software and data (see [references ⓘ](#)) were used in the production of this report:

MolProbity	:	4-5-2 with Phenix2.0
Mogul	:	2022.3.0, CSD as543be (2022)
Xtriage (Phenix)	:	2.0
EDS	:	3.0
Percentile statistics	:	20250101.v01 (using entries in the PDB archive January 1st 2025)
CCP4	:	9.0.010 (Gargrove)
Density-Fitness	:	1.0.12
Ideal geometry (proteins)	:	Engh & Huber (2001)
Ideal geometry (DNA, RNA)	:	Parkinson et al. (1996)
Validation Pipeline (wwPDB-VP)	:	2.49

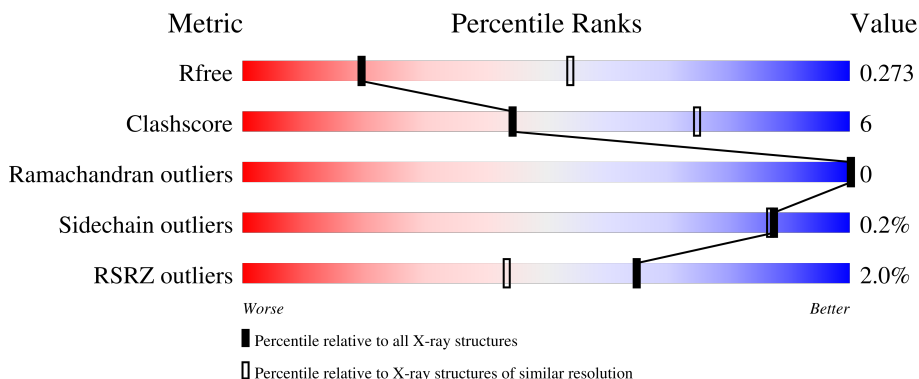
# 1 Overall quality at a glance

The following experimental techniques were used to determine the structure:

*X-RAY DIFFRACTION*

The reported resolution of this entry is 3.13 Å.

Percentile scores (ranging between 0-100) for global validation metrics of the entry are shown in the following graphic. The table shows the number of entries on which the scores are based.



Metric	Whole archive (#Entries)	Similar resolution (#Entries, resolution range(Å))
$R_{free}$	180053	2351 (3.18-3.10)
Clashscore	190562	2452 (3.18-3.10)
Ramachandran outliers	187476	2324 (3.18-3.10)
Sidechain outliers	187428	2324 (3.18-3.10)
RSRZ outliers	180081	2351 (3.18-3.10)

The table below summarises the geometric issues observed across the polymeric chains and their fit to the electron density. The red, orange, yellow and green segments of the lower bar indicate the fraction of residues that contain outliers for  $\geq 3$ , 2, 1 and 0 types of geometric quality criteria respectively. A grey segment represents the fraction of residues that are not modelled. The numeric value for each fraction is indicated below the corresponding segment, with a dot representing fractions  $\leq 5\%$ . The upper red bar (where present) indicates the fraction of residues that have poor fit to the electron density. The numeric value is given above the bar.

Mol	Chain	Length	Quality of chain
1	C	129	<div> <div>0%</div> <div>87%</div> <div>12%</div> <div>.</div> </div>
2	L	214	<div> <div>3%</div> <div>80%</div> <div>19%</div> </div>
3	H	231	<div> <div>2%</div> <div>76%</div> <div>10%</div> <div>15%</div> </div>

## 2 Entry composition [i](#)

There are 4 unique types of molecules in this entry. The entry contains 4190 atoms, of which 0 are hydrogens and 0 are deuteriums.

In the tables below, the ZeroOcc column contains the number of atoms modelled with zero occupancy, the AltConf column contains the number of residues with at least one atom in alternate conformation and the Trace column contains the number of residues modelled with at most 2 atoms.

- Molecule 1 is a protein called Lysozyme C.

Mol	Chain	Residues	Atoms					ZeroOcc	AltConf	Trace
1	C	128	Total	C	N	O	S	0	0	0
			992	607	192	183	10			

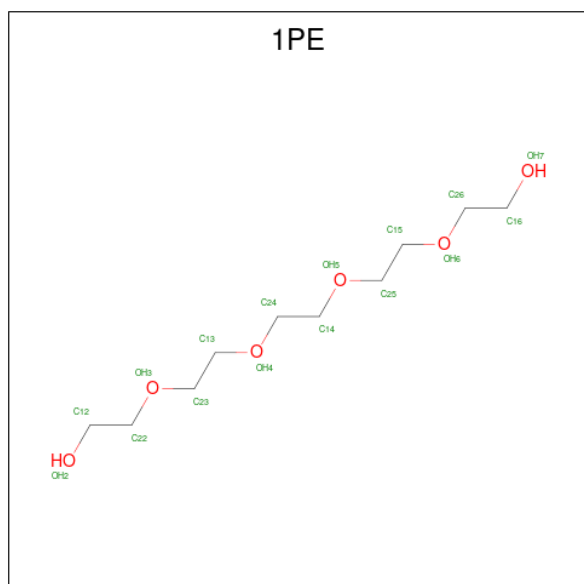
- Molecule 2 is a protein called Light Chain of HyHel10 Antibody Fragment (Fab).

Mol	Chain	Residues	Atoms					ZeroOcc	AltConf	Trace
2	L	213	Total	C	N	O	S	0	1	0
			1673	1038	295	334	6			

- Molecule 3 is a protein called Heavy Chain of HyHel10 Antibody Fragment (Fab).

Mol	Chain	Residues	Atoms					ZeroOcc	AltConf	Trace
3	H	197	Total	C	N	O	S	0	0	0
			1509	957	240	306	6			

- Molecule 4 is PENTAETHYLENE GLYCOL (CCD ID: 1PE) (formula: C<sub>10</sub>H<sub>22</sub>O<sub>6</sub>).

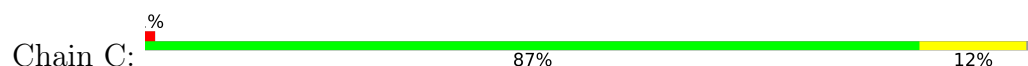


Mol	Chain	Residues	Atoms			ZeroOcc	AltConf
4	L	1	Total	C	O	0	0
			16	10	6		

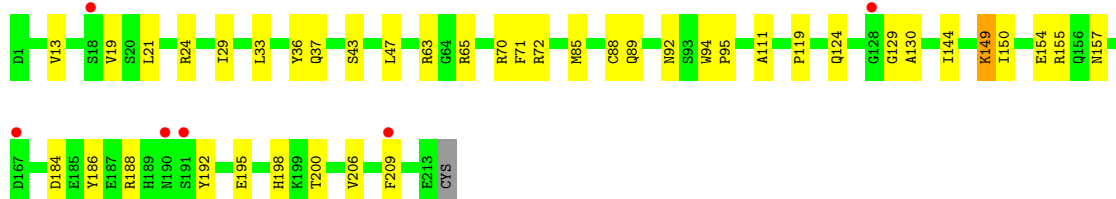
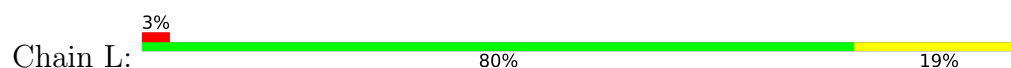
### 3 Residue-property plots [i](#)

These plots are drawn for all protein, RNA, DNA and oligosaccharide chains in the entry. The first graphic for a chain summarises the proportions of the various outlier classes displayed in the second graphic. The second graphic shows the sequence view annotated by issues in geometry and electron density. Residues are color-coded according to the number of geometric quality criteria for which they contain at least one outlier: green = 0, yellow = 1, orange = 2 and red = 3 or more. A red dot above a residue indicates a poor fit to the electron density ( $RSRZ > 2$ ). Stretches of 2 or more consecutive residues without any outlier are shown as a green connector. Residues present in the sample, but not in the model, are shown in grey.

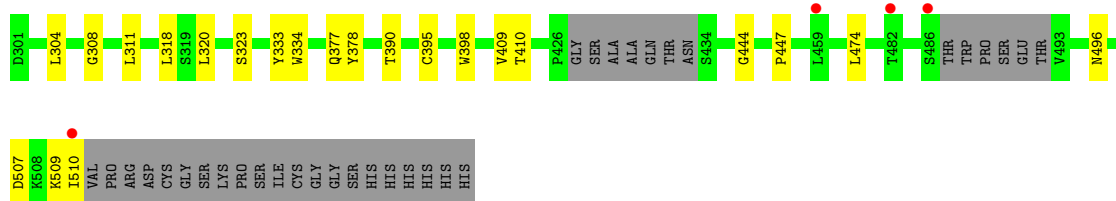
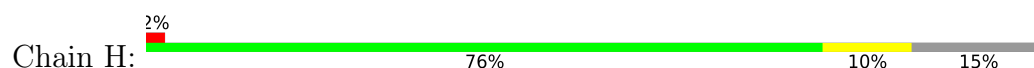
- Molecule 1: Lysozyme C



- Molecule 2: Light Chain of HyHel10 Antibody Fragment (Fab)



- Molecule 3: Heavy Chain of HyHel10 Antibody Fragment (Fab)



## 4 Data and refinement statistics

Property	Value	Source
Space group	P 63 2 2	Depositor
Cell constants a, b, c, $\alpha$ , $\beta$ , $\gamma$	147.90Å 147.90Å 137.70Å 90.00° 90.00° 120.00°	Depositor
Resolution (Å)	19.80 – 3.13 19.80 – 3.13	Depositor EDS
% Data completeness (in resolution range)	99.9 (19.80-3.13) 99.4 (19.80-3.13)	Depositor EDS
$R_{merge}$	0.09	Depositor
$R_{sym}$	(Not available)	Depositor
$\langle I/\sigma(I) \rangle$ <sup>1</sup>	1.51 (at 3.12Å)	Xtriage
Refinement program	PHENIX 1.19.1_4122, REFMAC 5.8.0055	Depositor
R, $R_{free}$	0.230 , 0.267 0.235 , 0.273	Depositor DCC
$R_{free}$ test set	811 reflections (5.00%)	wwPDB-VP
Wilson B-factor (Å <sup>2</sup> )	75.3	Xtriage
Anisotropy	0.163	Xtriage
Bulk solvent $k_{sol}$ (e/Å <sup>3</sup> ), $B_{sol}$ (Å <sup>2</sup> )	0.38 , 49.3	EDS
L-test for twinning <sup>2</sup>	$\langle  L  \rangle = 0.46$ , $\langle L^2 \rangle = 0.29$	Xtriage
Estimated twinning fraction	No twinning to report.	Xtriage
$F_o, F_c$ correlation	0.91	EDS
Total number of atoms	4190	wwPDB-VP
Average B, all atoms (Å <sup>2</sup> )	66.0	wwPDB-VP

Xtriage's analysis on translational NCS is as follows: *The largest off-origin peak in the Patterson function is 4.55% of the height of the origin peak. No significant pseudotranslation is detected.*

<sup>1</sup>Intensities estimated from amplitudes.

<sup>2</sup>Theoretical values of  $\langle |L| \rangle$ ,  $\langle L^2 \rangle$  for acentric reflections are 0.5, 0.333 respectively for untwinned datasets, and 0.375, 0.2 for perfectly twinned datasets.

## 5 Model quality [i](#)

### 5.1 Standard geometry [i](#)

Bond lengths and bond angles in the following residue types are not validated in this section: 1PE

The Z score for a bond length (or angle) is the number of standard deviations the observed value is removed from the expected value. A bond length (or angle) with  $|Z| > 5$  is considered an outlier worth inspection. RMSZ is the root-mean-square of all Z scores of the bond lengths (or angles).

Mol	Chain	Bond lengths		Bond angles	
		RMSZ	$\# Z  > 5$	RMSZ	$\# Z  > 5$
1	C	0.19	0/1012	0.45	0/1368
2	L	0.23	0/1714	0.59	2/2323 (0.1%)
3	H	0.21	0/1548	0.50	0/2121
All	All	0.22	0/4274	0.53	2/5812 (0.0%)

There are no bond length outliers.

All (2) bond angle outliers are listed below:

Mol	Chain	Res	Type	Atoms	Z	Observed(°)	Ideal(°)
2	L	149	LYS	CA-C-N	-5.80	111.53	121.97
2	L	149	LYS	C-N-CA	-5.80	111.53	121.97

There are no chirality outliers.

There are no planarity outliers.

### 5.2 Too-close contacts [i](#)

In the following table, the Non-H and H(model) columns list the number of non-hydrogen atoms and hydrogen atoms in the chain respectively. The H(added) column lists the number of hydrogen atoms added and optimized by MolProbity. The Clashes column lists the number of clashes within the asymmetric unit, whereas Symm-Clashes lists symmetry-related clashes.

Mol	Chain	Non-H	H(model)	H(added)	Clashes	Symm-Clashes
1	C	992	0	945	11	0
2	L	1673	0	1612	25	0
3	H	1509	0	1456	14	0
4	L	16	0	22	1	0
All	All	4190	0	4035	49	0

The all-atom clashscore is defined as the number of clashes found per 1000 atoms (including hydrogen atoms). The all-atom clashscore for this structure is 6.

All (49) close contacts within the same asymmetric unit are listed below, sorted by their clash magnitude.

Atom-1	Atom-2	Interatomic distance (Å)	Clash overlap (Å)
2:L:150:ILE:HD11	2:L:155:ARG:HD2	1.70	0.73
1:C:655:ILE:HD12	1:C:655:ILE:H	1.55	0.72
2:L:195:GLU:HG2	2:L:206:VAL:HG12	1.72	0.72
3:H:509:LYS:HG2	3:H:510:ILE:H	1.58	0.69
2:L:149:LYS:HG2	2:L:154:GLU:HG2	1.76	0.68
3:H:390:THR:HG23	3:H:410:THR:HA	1.79	0.64
3:H:496:ASN:ND2	3:H:507:ASP:OD2	2.31	0.62
2:L:33:LEU:HD21	2:L:88:CYS:HB2	1.81	0.61
3:H:311:LEU:HB2	3:H:447:PRO:HG3	1.85	0.59
2:L:13:VAL:HG21	2:L:19:VAL:HG11	1.84	0.59
3:H:323:SER:HA	3:H:377:GLN:HG2	1.84	0.58
2:L:37:GLN:HB2	2:L:47:LEU:HD11	1.88	0.56
1:C:651:THR:HB	1:C:653:TYR:CE1	2.41	0.55
2:L:94:TRP:CD2	2:L:95:PRO:HA	2.43	0.54
2:L:184:ASP:O	2:L:188:ARG:HG2	2.08	0.54
2:L:155:ARG:NH1	2:L:157:ASN:OD1	2.41	0.53
2:L:186:TYR:HA	2:L:192:TYR:OH	2.08	0.53
2:L:29:ILE:HA	2:L:92:ASN:HD22	1.73	0.53
1:C:640:THR:HA	1:C:655:ILE:HG13	1.93	0.51
1:C:615:HIS:HB3	1:C:692:VAL:HG11	1.91	0.51
3:H:378:TYR:OH	3:H:395:CYS:HB2	2.11	0.51
3:H:444:GLY:HA2	3:H:474:LEU:HB3	1.93	0.50
1:C:694:CYS:O	1:C:698:ILE:HG13	2.11	0.50
3:H:509:LYS:HG2	3:H:510:ILE:N	2.24	0.50
2:L:33:LEU:HD13	2:L:71:PHE:CG	2.47	0.49
2:L:144:ILE:HD13	2:L:198:HIS:HD2	1.77	0.49
2:L:21:LEU:O	2:L:72:ARG:HA	2.12	0.49
2:L:24:ARG:HG3	2:L:70:ARG:HG2	1.94	0.49
1:C:603:PHE:HB2	1:C:638:PHE:HB3	1.94	0.49
2:L:124:GLN:HG2	2:L:129:GLY:HA3	1.95	0.49
2:L:63:ARG:HH21	2:L:65:ARG:HD3	1.79	0.47
1:C:620:TYR:HA	2:L:92:ASN:OD1	2.15	0.46
1:C:634:PHE:HB2	1:C:710:ALA:HB1	1.97	0.46
2:L:36:TYR:HE2	2:L:89:GLN:HE21	1.63	0.46
2:L:85:MET:HE3	2:L:85:MET:HB3	1.83	0.46
3:H:333:TYR:HB2	3:H:398:TRP:CB	2.46	0.46
1:C:643:THR:HA	1:C:652:ASP:O	2.16	0.45

*Continued on next page...*



Continued from previous page...

Atom-1	Atom-2	Interatomic distance (Å)	Clash overlap (Å)
3:H:308:GLY:HA3	3:H:320:LEU:HD23	1.99	0.45
3:H:304:LEU:HD23	3:H:395:CYS:SG	2.56	0.45
3:H:333:TYR:HB2	3:H:398:TRP:HB2	1.97	0.45
2:L:29:ILE:HA	2:L:92:ASN:ND2	2.33	0.44
3:H:334:TRP:HB3	3:H:378:TYR:CZ	2.53	0.44
2:L:130:ALA:HB1	2:L:186:TYR:HB2	2.00	0.43
2:L:150:ILE:HG23	2:L:192:TYR:CE1	2.53	0.43
2:L:119:PRO:HB3	2:L:209:PHE:CZ	2.54	0.42
3:H:318:LEU:HD11	3:H:409:VAL:HG11	2.01	0.42
1:C:693:ASN:HB3	4:L:301:1PE:H262	2.01	0.41
2:L:111:ALA:C	2:L:200:THR:HG21	2.45	0.41
1:C:655:ILE:H	1:C:655:ILE:CD1	2.29	0.41

There are no symmetry-related clashes.

## 5.3 Torsion angles ⓘ

### 5.3.1 Protein backbone ⓘ

In the following table, the Percentiles column shows the percent Ramachandran outliers of the chain as a percentile score with respect to all X-ray entries followed by that with respect to entries of similar resolution.

The Analysed column shows the number of residues for which the backbone conformation was analysed, and the total number of residues.

Mol	Chain	Analysed	Favoured	Allowed	Outliers	Percentiles	
1	C	126/129 (98%)	126 (100%)	0	0	100	100
2	L	212/214 (99%)	204 (96%)	8 (4%)	0	100	100
3	H	191/231 (83%)	190 (100%)	1 (0%)	0	100	100
All	All	529/574 (92%)	520 (98%)	9 (2%)	0	100	100

There are no Ramachandran outliers to report.

### 5.3.2 Protein sidechains ⓘ

In the following table, the Percentiles column shows the percent sidechain outliers of the chain as a percentile score with respect to all X-ray entries followed by that with respect to entries of similar resolution.

The Analysed column shows the number of residues for which the sidechain conformation was analysed, and the total number of residues.

Mol	Chain	Analysed	Rotameric	Outliers	Percentiles	
1	C	104/105 (99%)	104 (100%)	0	100	100
2	L	192/192 (100%)	190 (99%)	2 (1%)	68	76
3	H	177/205 (86%)	177 (100%)	0	100	100
All	All	473/502 (94%)	471 (100%)	2 (0%)	87	84

All (2) residues with a non-rotameric sidechain are listed below:

Mol	Chain	Res	Type
2	L	43[A]	SER
2	L	43[B]	SER

Sometimes sidechains can be flipped to improve hydrogen bonding and reduce clashes. All (3) such sidechains are listed below:

Mol	Chain	Res	Type
1	C	646	ASN
2	L	37	GLN
2	L	92	ASN

### 5.3.3 RNA ⓘ

There are no RNA molecules in this entry.

## 5.4 Non-standard residues in protein, DNA, RNA chains ⓘ

There are no non-standard protein/DNA/RNA residues in this entry.

## 5.5 Carbohydrates ⓘ

There are no oligosaccharides in this entry.

## 5.6 Ligand geometry ⓘ

1 ligand is modelled in this entry.

In the following table, the Counts columns list the number of bonds (or angles) for which Mogul statistics could be retrieved, the number of bonds (or angles) that are observed in the model and

the number of bonds (or angles) that are defined in the Chemical Component Dictionary. The Link column lists molecule types, if any, to which the group is linked. The Z score for a bond length (or angle) is the number of standard deviations the observed value is removed from the expected value. A bond length (or angle) with  $|Z| > 2$  is considered an outlier worth inspection. RMSZ is the root-mean-square of all Z scores of the bond lengths (or angles).

Mol	Type	Chain	Res	Link	Bond lengths			Bond angles		
					Counts	RMSZ	# Z  > 2	Counts	RMSZ	# Z  > 2
4	1PE	L	301	-	15,15,15	0.14	0	14,14,14	0.24	0

In the following table, the Chirals column lists the number of chiral outliers, the number of chiral centers analysed, the number of these observed in the model and the number defined in the Chemical Component Dictionary. Similar counts are reported in the Torsion and Rings columns. '-' means no outliers of that kind were identified.

Mol	Type	Chain	Res	Link	Chirals	Torsions	Rings
4	1PE	L	301	-	-	6/13/13/13	-

There are no bond length outliers.

There are no bond angle outliers.

There are no chirality outliers.

All (6) torsion outliers are listed below:

Mol	Chain	Res	Type	Atoms
4	L	301	1PE	OH5-C14-C24-OH4
4	L	301	1PE	OH6-C15-C25-OH5
4	L	301	1PE	C16-C26-OH6-C15
4	L	301	1PE	C24-C14-OH5-C25
4	L	301	1PE	OH7-C16-C26-OH6
4	L	301	1PE	C12-C22-OH3-C23

There are no ring outliers.

1 monomer is involved in 1 short contact:

Mol	Chain	Res	Type	Clashes	Symm-Clashes
4	L	301	1PE	1	0

## 5.7 Other polymers ⓘ

There are no such residues in this entry.

## 5.8 Polymer linkage issues ⓘ

There are no chain breaks in this entry.

## 6 Fit of model and data [i](#)

### 6.1 Protein, DNA and RNA chains [i](#)

In the following table, the column labelled ‘#RSRZ> 2’ contains the number (and percentage) of RSRZ outliers, followed by percent RSRZ outliers for the chain as percentile scores relative to all X-ray entries and entries of similar resolution. The OWAB column contains the minimum, median, 95<sup>th</sup> percentile and maximum values of the occupancy-weighted average B-factor per residue. The column labelled ‘Q< 0.9’ lists the number of (and percentage) of residues with an average occupancy less than 0.9.

Mol	Chain	Analysed	<RSRZ>	#RSRZ>2		OWAB(Å <sup>2</sup> )	Q<0.9
1	C	128/129 (99%)	0.05	1 (0%)	82 65	46, 70, 92, 101	0
2	L	213/214 (99%)	0.01	6 (2%)	55 33	40, 58, 103, 111	1 (0%)
3	H	197/231 (85%)	-0.07	4 (2%)	65 43	44, 62, 97, 116	0
All	All	538/574 (93%)	-0.01	11 (2%)	65 43	40, 63, 98, 116	1 (0%)

All (11) RSRZ outliers are listed below:

Mol	Chain	Res	Type	RSRZ
2	L	191	SER	3.0
2	L	167	ASP	2.9
3	H	486	SER	2.5
2	L	190	ASN	2.5
2	L	209	PHE	2.5
3	H	482	THR	2.2
1	C	648	ASP	2.2
3	H	510	ILE	2.2
3	H	459	LEU	2.2
2	L	128	GLY	2.1
2	L	18	SER	2.0

### 6.2 Non-standard residues in protein, DNA, RNA chains [i](#)

There are no non-standard protein/DNA/RNA residues in this entry.

### 6.3 Carbohydrates [i](#)

There are no oligosaccharides in this entry.

## 6.4 Ligands

In the following table, the Atoms column lists the number of modelled atoms in the group and the number defined in the chemical component dictionary. The B-factors column lists the minimum, median, 95<sup>th</sup> percentile and maximum values of B factors of atoms in the group. The column labelled 'Q< 0.9' lists the number of atoms with occupancy less than 0.9.

Mol	Type	Chain	Res	Atoms	RSCC	RSR	B-factors( $\text{\AA}^2$ )	Q<0.9
4	1PE	L	301	16/16	0.87	0.14	54,54,54,54	0

## 6.5 Other polymers

There are no such residues in this entry.