



Full wwPDB X-ray Structure Validation Report ⓘ

May 17, 2026 – 10:35 PM JST

PDB ID : 23LO / pdb_000023lo
Title : crystal structure of a flavin dependent Baeyer Villiger monooxygenase from
Micromonospora lupini NBC_00409 in complex with FAD
Authors : Lin, Z.E.; Chen, S.Q.; Zhang, L.P.; Zhang, C.S.
Deposited on : 2026-02-10
Resolution : 3.20 Å(reported)

This is a Full wwPDB X-ray Structure Validation Report for a publicly released PDB entry.

We welcome your comments at validation@mail.wwpdb.org

A user guide is available at

<https://www.wwpdb.org/validation/2017/XrayValidationReportHelp>

with specific help available everywhere you see the ⓘ symbol.

The types of validation reports are described at

<http://www.wwpdb.org/validation/2017/FAQs#types>.

The following versions of software and data (see [references ⓘ](#)) were used in the production of this report:

MolProbity : 4-5-2 with Phenix2.0
Mogul : 1.8.5 (274361), CSD as541be (2020)
Xtriage (Phenix) : 2.0
EDS : 3.0
Buster-report : wwPDB partial adaption of 1.1.7 (2018)
Percentile statistics : 20250101.v01 (using entries in the PDB archive January 1st 2025)
CCP4 : 9.0.010 (Gargrove)
Density-Fitness : 1.0.12
Ideal geometry (proteins) : Engh & Huber (2001)
Ideal geometry (DNA, RNA) : Parkinson et al. (1996)
Validation Pipeline (wwPDB-VP) : 2.49

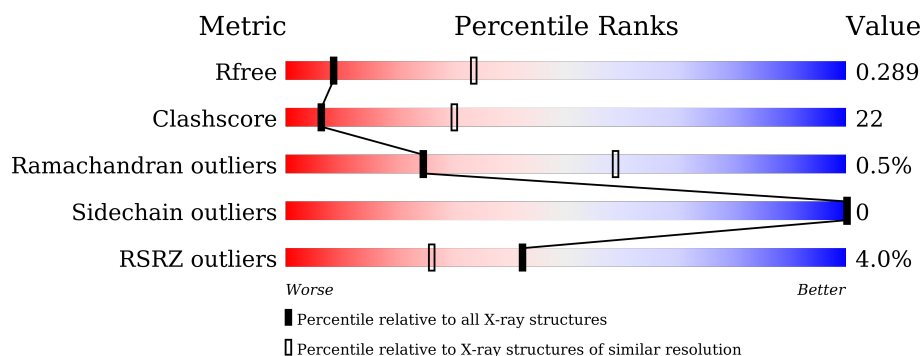
1 Overall quality at a glance

The following experimental techniques were used to determine the structure:

X-RAY DIFFRACTION

The reported resolution of this entry is 3.20 Å.

Percentile scores (ranging between 0-100) for global validation metrics of the entry are shown in the following graphic. The table shows the number of entries on which the scores are based.



Metric	Whole archive (#Entries)	Similar resolution (#Entries, resolution range(Å))
R_{free}	180053	1466 (3.20-3.20)
Clashscore	190562	1573 (3.20-3.20)
Ramachandran outliers	187476	1548 (3.20-3.20)
Sidechain outliers	187428	1547 (3.20-3.20)
RSRZ outliers	180081	1466 (3.20-3.20)

The table below summarises the geometric issues observed across the polymeric chains and their fit to the electron density. The red, orange, yellow and green segments of the lower bar indicate the fraction of residues that contain outliers for ≥ 3 , 2, 1 and 0 types of geometric quality criteria respectively. A grey segment represents the fraction of residues that are not modelled. The numeric value for each fraction is indicated below the corresponding segment, with a dot representing fractions $\leq 5\%$. The upper red bar (where present) indicates the fraction of residues that have poor fit to the electron density. The numeric value is given above the bar.

Mol	Chain	Length	Quality of chain
1	A	511	<div> <div>2%</div> <div> <div></div> <div>62%</div> <div>36%</div> <div>.</div> </div> </div>
1	D	511	<div> <div>5%</div> <div> <div></div> <div>63%</div> <div>35%</div> <div>..</div> </div> </div>
1	G	511	<div> <div>5%</div> <div> <div></div> <div>57%</div> <div>36%</div> <div>7%</div> </div> </div>
1	J	511	<div> <div>4%</div> <div> <div></div> <div>56%</div> <div>41%</div> <div>.</div> </div> </div>
1	M	511	<div> <div>4%</div> <div> <div></div> <div>62%</div> <div>32%</div> <div>• 5%</div> </div> </div>
1	P	511	<div> <div>3%</div> <div> <div></div> <div>54%</div> <div>36%</div> <div>10%</div> </div> </div>

2 Entry composition (i)

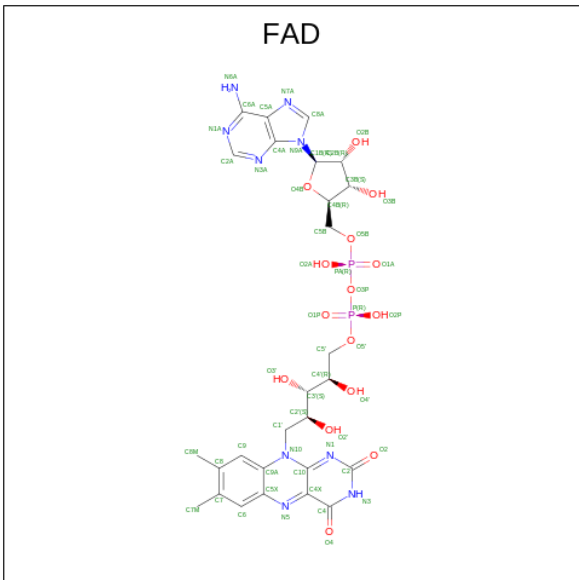
There are 2 unique types of molecules in this entry. The entry contains 22636 atoms, of which 155 are hydrogens and 0 are deuteriums.

In the tables below, the ZeroOcc column contains the number of atoms modelled with zero occupancy, the AltConf column contains the number of residues with at least one atom in alternate conformation and the Trace column contains the number of residues modelled with at most 2 atoms.

- Molecule 1 is a protein called flavin dependent Baeyer Villiger monooxygenase.

Mol	Chain	Residues	Atoms					ZeroOcc	AltConf	Trace
1	A	506	Total 3856	C 2432	N 705	O 709	S 10	0	0	0
1	D	502	Total 3826	C 2417	N 700	O 699	S 10	0	0	0
1	G	474	Total 3607	C 2270	N 665	O 662	S 10	0	0	0
1	J	499	Total 3810	C 2407	N 698	O 694	S 11	0	0	0
1	M	485	Total 3651	C 2297	N 667	O 677	S 10	0	0	0
1	P	458	Total 3466	C 2185	N 633	O 638	S 10	0	0	0

- Molecule 2 is FLAVIN-ADENINE DINUCLEOTIDE (CCD ID: FAD) (formula: $C_{27}H_{33}N_9O_{15}P_2$) (labeled as "Ligand of Interest" by depositor).

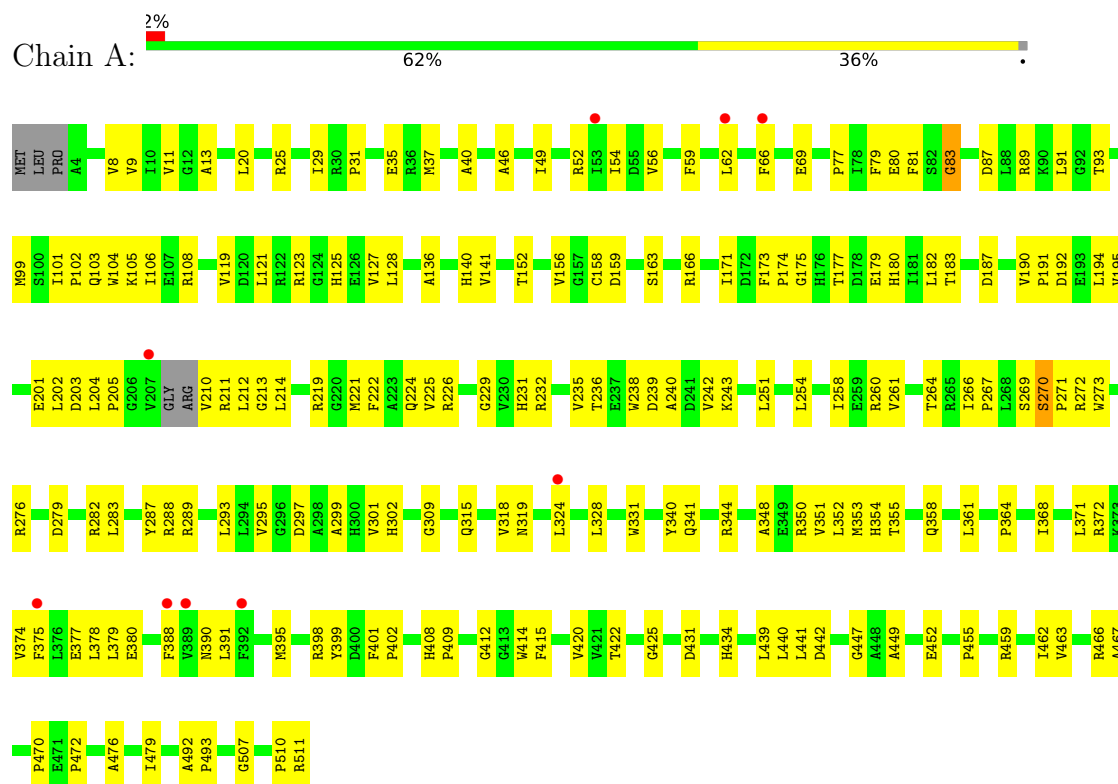


Mol	Chain	Residues	Atoms						ZeroOcc	AltConf
2	A	1	Total	C	H	N	O	P	0	0
			84	27	31	9	15	2		
2	D	1	Total	C	H	N	O	P	0	0
			84	27	31	9	15	2		
2	G	1	Total	C	H	N	O	P	0	0
			84	27	31	9	15	2		
2	J	1	Total	C	H	N	O	P	0	0
			84	27	31	9	15	2		
2	P	1	Total	C	H	N	O	P	0	0
			84	27	31	9	15	2		

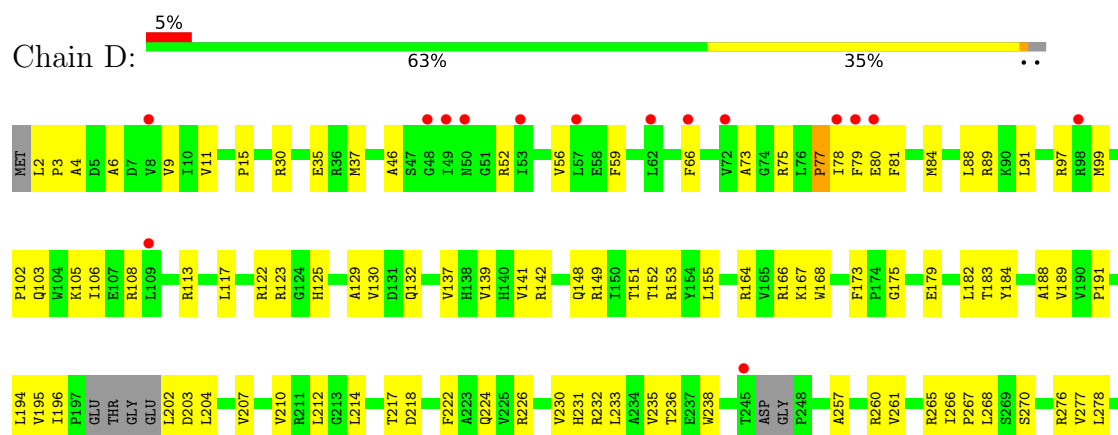
3 Residue-property plots

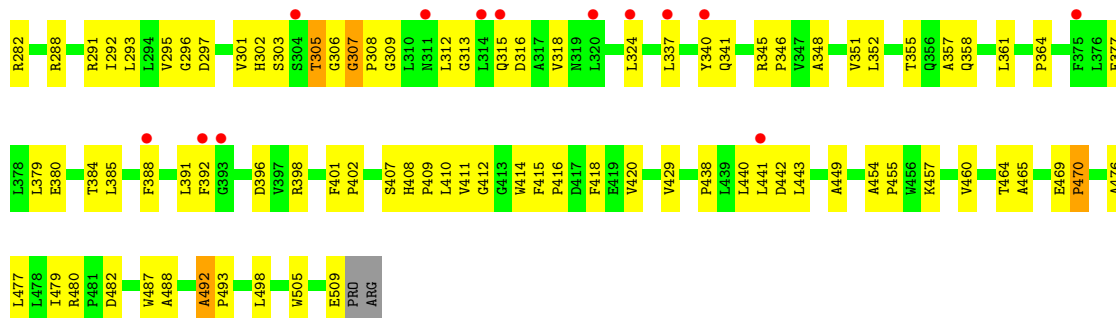
These plots are drawn for all protein, RNA, DNA and oligosaccharide chains in the entry. The first graphic for a chain summarises the proportions of the various outlier classes displayed in the second graphic. The second graphic shows the sequence view annotated by issues in geometry and electron density. Residues are color-coded according to the number of geometric quality criteria for which they contain at least one outlier: green = 0, yellow = 1, orange = 2 and red = 3 or more. A red dot above a residue indicates a poor fit to the electron density ($RSRZ > 2$). Stretches of 2 or more consecutive residues without any outlier are shown as a green connector. Residues present in the sample, but not in the model, are shown in grey.

- Molecule 1: flavin dependent Baeyer Villiger monooxygenase

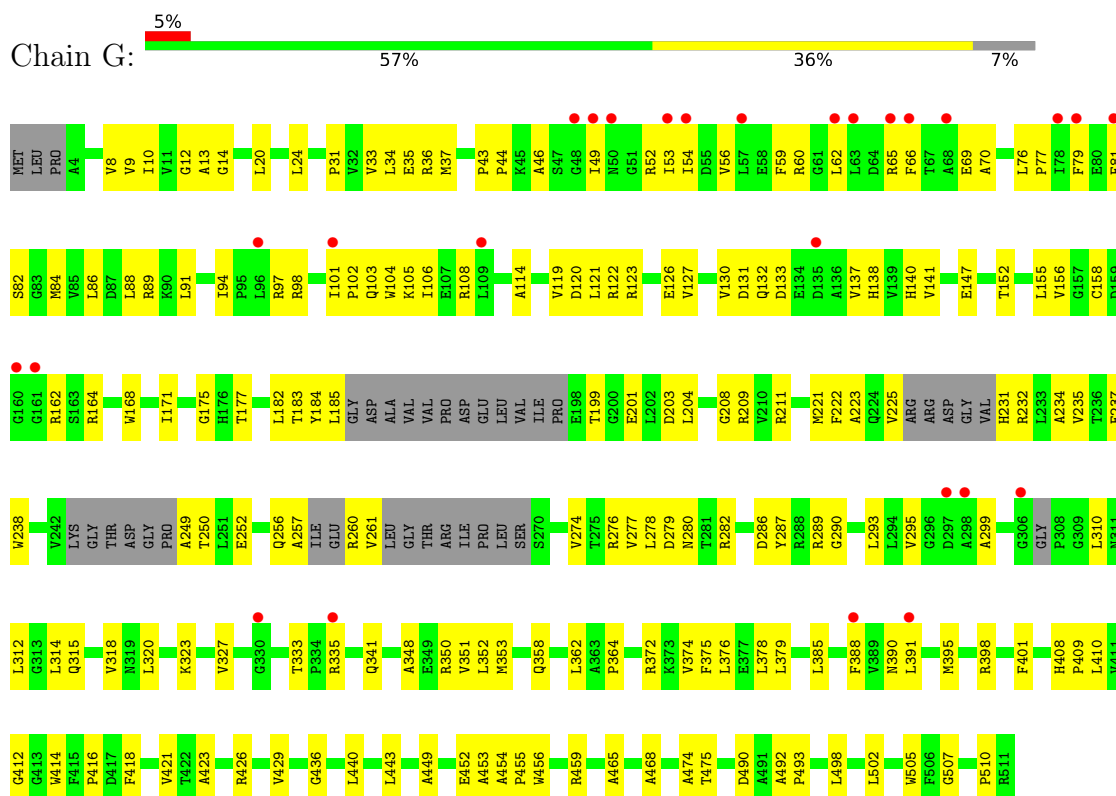


- Molecule 1: flavin dependent Baeyer Villiger monooxygenase

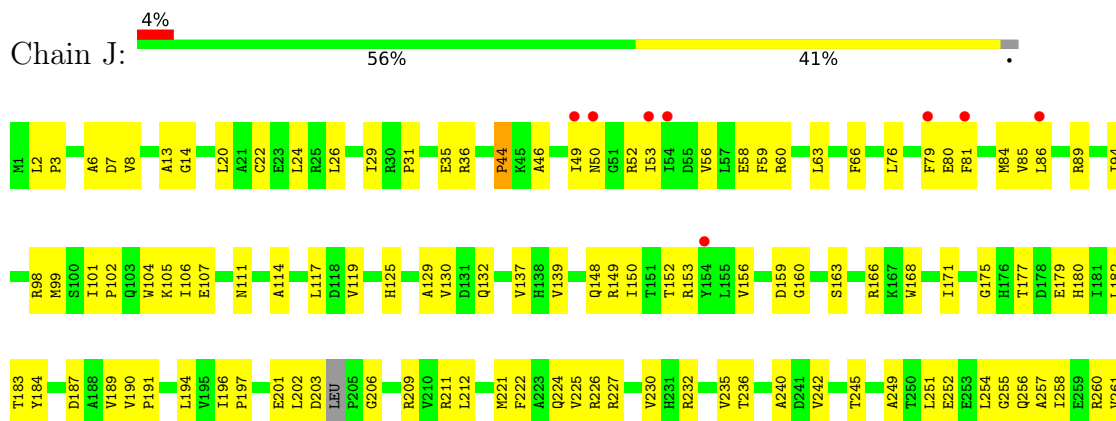


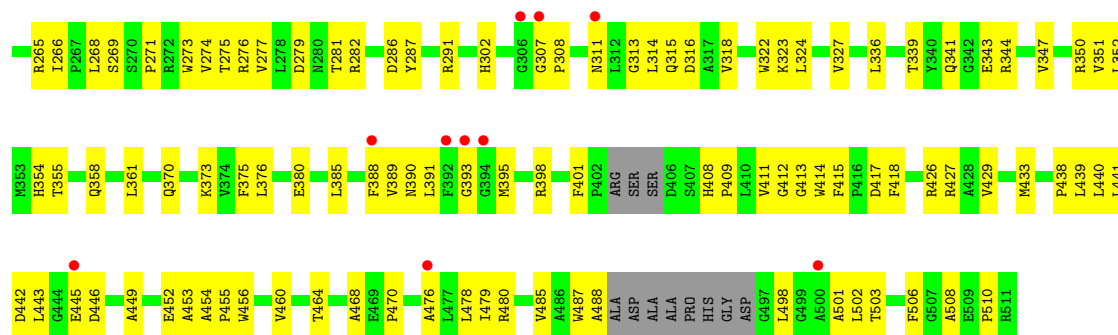


● Molecule 1: flavin dependent Baeyer Villiger monooxygenase

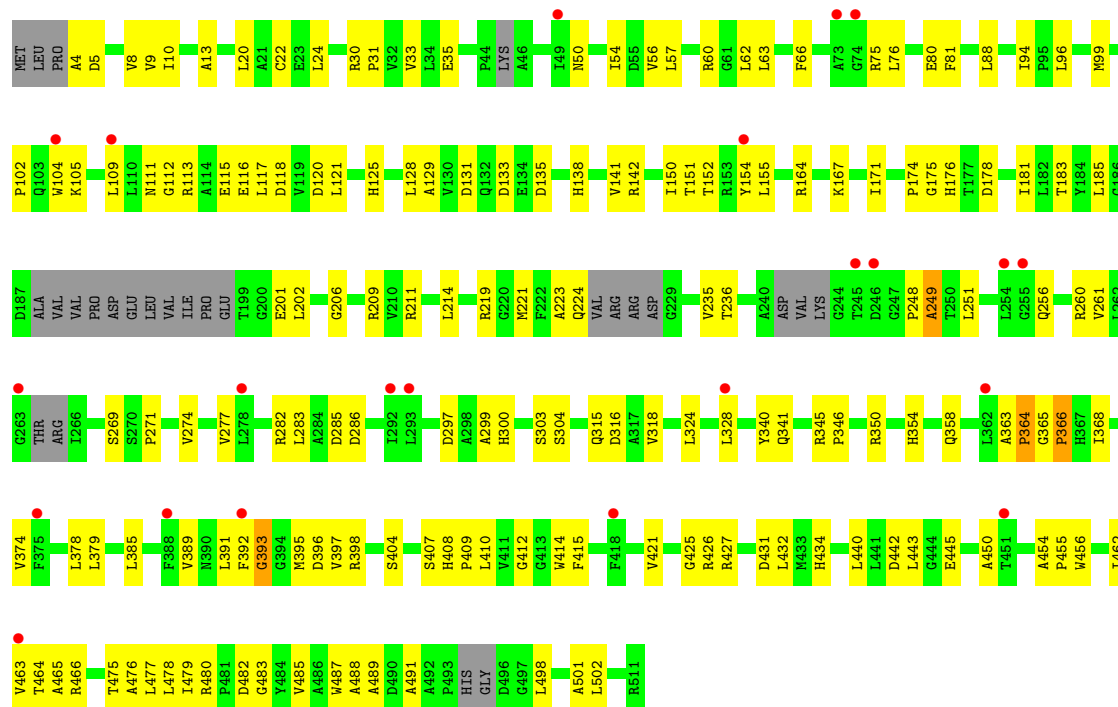


● Molecule 1: flavin dependent Baeyer Villiger monooxygenase

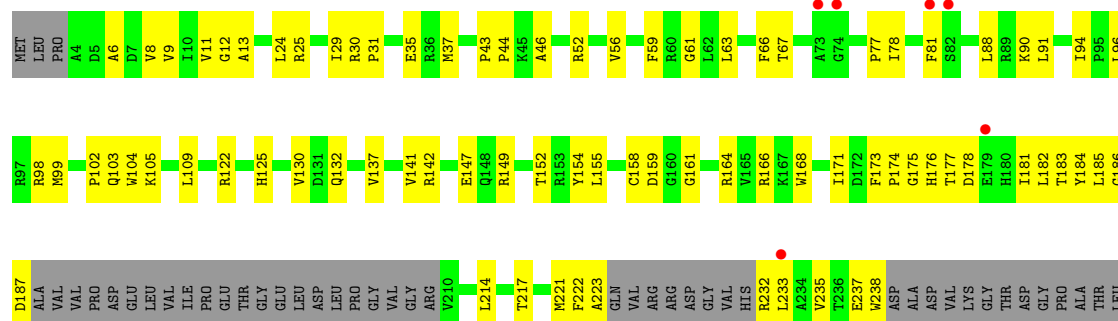


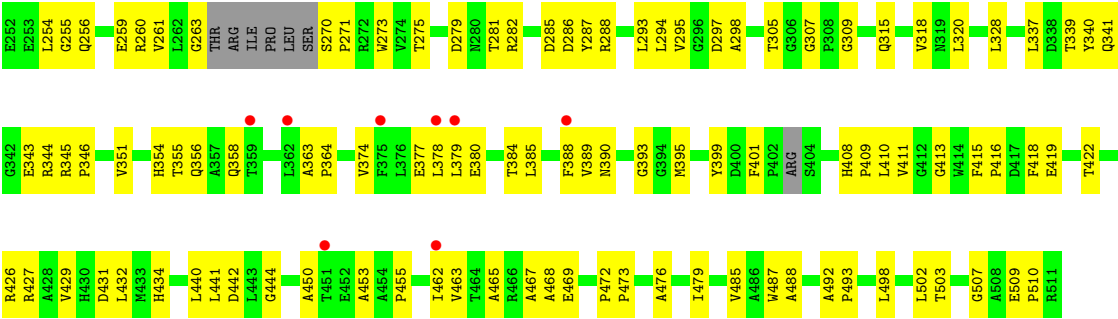


• Molecule 1: flavin dependent Baeyer Villiger monooxygenase



• Molecule 1: flavin dependent Baeyer Villiger monooxygenase





4 Data and refinement statistics

Property	Value	Source
Space group	P 1	Depositor
Cell constants a, b, c, α , β , γ	90.91Å 115.72Å 120.20Å 117.73° 92.67° 111.32°	Depositor
Resolution (Å)	49.73 – 3.20 49.73 – 3.20	Depositor EDS
% Data completeness (in resolution range)	93.2 (49.73-3.20) 93.2 (49.73-3.20)	Depositor EDS
R_{merge}	0.12	Depositor
R_{sym}	(Not available)	Depositor
$\langle I/\sigma(I) \rangle$ ¹	1.28 (at 3.19Å)	Xtriage
Refinement program	PHENIX (1.21.2_5419: ???)	Depositor
R, R_{free}	0.259 , 0.288 0.260 , 0.289	Depositor DCC
R_{free} test set	2988 reflections (4.64%)	wwPDB-VP
Wilson B-factor (Å ²)	94.4	Xtriage
Anisotropy	0.198	Xtriage
Bulk solvent k_{sol} (e/Å ³), B_{sol} (Å ²)	0.24 , 11.8	EDS
L-test for twinning ²	$\langle L \rangle = 0.51$, $\langle L^2 \rangle = 0.34$	Xtriage
Estimated twinning fraction	0.000 for -h,h+k+l,-l	Xtriage
F_o, F_c correlation	0.91	EDS
Total number of atoms	22636	wwPDB-VP
Average B, all atoms (Å ²)	99.0	wwPDB-VP

Xtriage's analysis on translational NCS is as follows: *The largest off-origin peak in the Patterson function is 4.82% of the height of the origin peak. No significant pseudotranslation is detected.*

¹Intensities estimated from amplitudes.

²Theoretical values of $\langle |L| \rangle$, $\langle L^2 \rangle$ for acentric reflections are 0.5, 0.333 respectively for untwinned datasets, and 0.375, 0.2 for perfectly twinned datasets.

5 Model quality [i](#)

5.1 Standard geometry [i](#)

Bond lengths and bond angles in the following residue types are not validated in this section: FAD

The Z score for a bond length (or angle) is the number of standard deviations the observed value is removed from the expected value. A bond length (or angle) with $|Z| > 5$ is considered an outlier worth inspection. RMSZ is the root-mean-square of all Z scores of the bond lengths (or angles).

Mol	Chain	Bond lengths		Bond angles	
		RMSZ	# Z >5	RMSZ	# Z >5
1	A	0.13	0/3941	0.30	0/5368
1	D	0.18	0/3910	0.34	0/5326
1	G	0.09	0/3681	0.27	0/5005
1	J	0.10	0/3892	0.27	0/5296
1	M	0.11	0/3725	0.28	0/5067
1	P	0.08	0/3537	0.26	0/4810
All	All	0.12	0/22686	0.29	0/30872

Chiral center outliers are detected by calculating the chiral volume of a chiral center and verifying if the center is modelled as a planar moiety or with the opposite hand. A planarity outlier is detected by checking planarity of atoms in a peptide group, atoms in a mainchain group or atoms of a sidechain that are expected to be planar.

Mol	Chain	#Chirality outliers	#Planarity outliers
1	D	0	1

There are no bond length outliers.

There are no bond angle outliers.

There are no chirality outliers.

All (1) planarity outliers are listed below:

Mol	Chain	Res	Type	Group
1	D	492	ALA	Mainchain

5.2 Too-close contacts [i](#)

In the following table, the Non-H and H(model) columns list the number of non-hydrogen atoms and hydrogen atoms in the chain respectively. The H(added) column lists the number of hydrogen atoms added and optimized by MolProbity. The Clashes column lists the number of clashes within

the asymmetric unit, whereas Symm-Clashes lists symmetry-related clashes.

Mol	Chain	Non-H	H(model)	H(added)	Clashes	Symm-Clashes
1	A	3856	0	3836	167	0
1	D	3826	0	3814	163	0
1	G	3607	0	3562	159	0
1	J	3810	0	3805	193	0
1	M	3651	0	3591	158	0
1	P	3466	0	3414	159	0
2	A	53	31	31	4	0
2	D	53	31	31	1	0
2	G	53	31	31	9	0
2	J	53	31	31	4	0
2	P	53	31	31	4	0
All	All	22481	155	22177	988	0

The all-atom clashscore is defined as the number of clashes found per 1000 atoms (including hydrogen atoms). The all-atom clashscore for this structure is 22.

All (988) close contacts within the same asymmetric unit are listed below, sorted by their clash magnitude.

Atom-1	Atom-2	Interatomic distance (Å)	Clash overlap (Å)
1:J:175:GLY:HA3	1:J:282:ARG:HG2	1.25	1.12
1:A:251:LEU:HD21	1:A:271:PRO:HB3	1.23	1.12
1:G:46:ALA:HB3	1:G:103:GLN:HB2	1.30	1.12
1:G:10:ILE:HD12	1:G:20:LEU:HD22	1.33	1.10
1:A:46:ALA:HB3	1:A:103:GLN:HB2	1.31	1.08
1:P:379:LEU:HD23	1:P:384:THR:HG22	1.38	1.06
1:P:46:ALA:HB3	1:P:103:GLN:HB2	1.36	1.04
1:A:266:ILE:HG12	1:A:267:PRO:HD2	1.37	1.03
1:A:266:ILE:CG1	1:A:267:PRO:HD2	1.94	0.97
1:J:390:ASN:HA	1:J:395:MET:HE3	1.48	0.95
1:D:175:GLY:HA3	1:D:282:ARG:HG2	1.50	0.93
1:J:182:LEU:HD21	1:J:276:ARG:HD2	1.50	0.93
1:A:40:ALA:HB2	1:A:123:ARG:HH12	1.36	0.91
1:M:60:ARG:HB2	1:M:62:LEU:HD13	1.53	0.91
1:P:81:PHE:HE1	1:P:358:GLN:HG2	1.36	0.91
1:G:492:ALA:HB1	1:J:89:ARG:HD2	1.54	0.90
1:D:102:PRO:HD2	1:D:105:LYS:HD2	1.55	0.88
1:A:459:ARG:HH21	1:A:510:PRO:HG3	1.39	0.88
1:G:492:ALA:HB3	1:J:89:ARG:HB3	1.55	0.87
1:M:251:LEU:HD21	1:M:271:PRO:HB3	1.57	0.87
1:A:128:LEU:HB2	1:A:140:HIS:HD2	1.40	0.87

Continued on next page...

Continued from previous page...

Atom-1	Atom-2	Interatomic distance (Å)	Clash overlap (Å)
1:M:81:PHE:HE1	1:M:358:GLN:HG2	1.40	0.86
1:M:183:THR:HB	1:M:236:THR:HG22	1.58	0.85
1:D:56:VAL:HA	1:D:59:PHE:CE2	2.11	0.84
1:J:56:VAL:HA	1:J:59:PHE:CE2	2.11	0.84
1:J:187:ASP:HB3	1:J:232:ARG:HD2	1.58	0.84
1:P:440:LEU:HD23	1:P:462:ILE:HG23	1.60	0.84
1:P:56:VAL:HA	1:P:59:PHE:CE2	2.13	0.83
1:J:148:GLN:OE1	1:J:150:ILE:HG13	1.77	0.83
1:M:393:GLY:HA3	1:M:395:MET:HE2	1.58	0.83
1:M:475:THR:HG21	1:M:491:ALA:HA	1.60	0.83
1:A:420:VAL:HG11	1:A:441:LEU:HD21	1.61	0.82
1:P:35:GLU:OE2	1:P:37:MET:HG2	1.81	0.81
1:P:175:GLY:HA3	1:P:282:ARG:HG2	1.62	0.81
1:P:78:ILE:HG13	1:P:98:ARG:HH21	1.46	0.80
1:G:56:VAL:HA	1:G:59:PHE:CE2	2.16	0.79
1:J:182:LEU:HB2	1:J:242:VAL:HG12	1.65	0.79
1:J:227:ARG:HE	1:J:232:ARG:HG3	1.47	0.79
1:D:189:VAL:CG2	1:D:270:SER:HB2	2.13	0.78
1:J:56:VAL:HA	1:J:59:PHE:CD2	2.19	0.78
1:J:418:PHE:HE1	1:J:443:LEU:HD11	1.48	0.77
1:G:127:VAL:HG22	1:G:141:VAL:HG22	1.64	0.77
1:M:354:HIS:HE1	1:M:391:LEU:HD11	1.50	0.77
1:A:415:PHE:HB2	1:A:479:ILE:HD13	1.67	0.77
1:D:189:VAL:HG23	1:D:270:SER:HB2	1.65	0.77
1:M:50:ASN:HA	1:M:54:ILE:HD11	1.67	0.77
1:M:364:PRO:CB	1:M:368:ILE:HB	2.14	0.77
1:J:449:ALA:HB1	1:J:452:GLU:HB3	1.66	0.76
1:J:393:GLY:HA3	1:J:395:MET:HE2	1.67	0.76
1:J:196:ILE:HD12	1:J:197:PRO:HD2	1.67	0.76
1:J:361:LEU:HD11	1:J:375:PHE:CE2	2.20	0.76
1:G:36:ARG:HB3	1:G:126:GLU:HB2	1.67	0.76
1:P:377:GLU:O	1:P:380:GLU:HB2	1.86	0.76
1:G:114:ALA:HB1	1:G:119:VAL:HG21	1.68	0.76
1:M:364:PRO:HB3	1:M:368:ILE:HB	1.66	0.76
1:M:128:LEU:HD11	1:M:142:ARG:HB2	1.69	0.75
1:G:350:ARG:HH21	1:G:391:LEU:HD13	1.51	0.75
1:J:252:GLU:O	1:J:256:GLN:HG3	1.87	0.75
1:M:10:ILE:HD12	1:M:33:VAL:HG22	1.68	0.75
1:M:81:PHE:CE1	1:M:358:GLN:HG2	2.22	0.75
1:A:173:PHE:CE2	1:A:282:ARG:HB2	2.22	0.74
1:G:474:ALA:HA	1:G:490:ASP:OD1	1.87	0.74

Continued on next page...

Continued from previous page...

Atom-1	Atom-2	Interatomic distance (Å)	Clash overlap (Å)
1:D:415:PHE:HB2	1:D:479:ILE:HD13	1.67	0.74
1:P:88:LEU:HB2	1:P:94:ILE:HD13	1.70	0.74
1:D:191:PRO:HG2	1:D:267:PRO:HB2	1.69	0.74
1:G:46:ALA:CB	1:G:103:GLN:HB2	2.15	0.73
1:A:354:HIS:O	1:A:358:GLN:HG3	1.88	0.73
1:J:418:PHE:CE1	1:J:443:LEU:HD11	2.24	0.73
1:M:175:GLY:HA3	1:M:282:ARG:HG2	1.71	0.73
1:A:46:ALA:CB	1:A:103:GLN:HB2	2.15	0.73
1:J:49:ILE:HD11	1:J:53:ILE:HG21	1.71	0.73
1:A:287:TYR:HB2	1:A:341:GLN:HB2	1.71	0.72
1:G:182:LEU:HD13	1:G:278:LEU:HD23	1.72	0.72
1:P:214:LEU:HG	1:P:223:ALA:HB2	1.71	0.72
1:A:201:GLU:HB3	1:A:210:VAL:HG23	1.71	0.72
1:J:81:PHE:CE2	1:J:358:GLN:HG2	2.25	0.72
1:A:315:GLN:O	1:A:318:VAL:HG12	1.90	0.72
1:M:125:HIS:HB3	1:M:141:VAL:CG2	2.20	0.72
1:A:182:LEU:HD11	1:A:276:ARG:HD2	1.72	0.71
1:J:221:MET:HE2	1:J:236:THR:HG22	1.71	0.71
1:M:379:LEU:O	1:M:385:LEU:HB2	1.90	0.71
1:J:7:ASP:HA	1:J:153:ARG:HD3	1.71	0.71
1:J:79:PHE:HA	1:J:98:ARG:HH12	1.55	0.71
1:P:159:ASP:HB2	2:P:601:FAD:C8A	2.19	0.71
1:D:265:ARG:NH1	1:D:267:PRO:HA	2.05	0.71
1:G:310:LEU:HB2	2:G:601:FAD:O2	1.91	0.70
1:G:492:ALA:CB	1:J:89:ARG:HD2	2.21	0.70
1:J:315:GLN:HA	1:J:318:VAL:HG12	1.72	0.70
1:M:364:PRO:HG3	1:M:368:ILE:CG2	2.21	0.70
1:P:374:VAL:O	1:P:378:LEU:HG	1.91	0.70
1:D:35:GLU:HG3	1:D:37:MET:H	1.57	0.70
1:P:66:PHE:CD1	1:P:109:LEU:HD13	2.26	0.70
1:A:202:LEU:HG	1:A:224:GLN:HG3	1.74	0.69
1:J:225:VAL:HG23	1:J:232:ARG:HB2	1.74	0.69
1:M:4:ALA:HA	1:M:151:THR:HB	1.74	0.69
1:P:379:LEU:HD21	1:P:388:PHE:CD1	2.27	0.69
1:M:364:PRO:HB3	1:M:368:ILE:HD12	1.74	0.69
1:A:175:GLY:HA3	1:A:282:ARG:HG2	1.74	0.69
1:G:10:ILE:HG13	1:G:156:VAL:HG23	1.75	0.69
1:P:184:TYR:CB	1:P:254:LEU:HB2	2.23	0.68
1:J:249:ALA:HB3	1:J:274:VAL:O	1.94	0.68
1:P:176:HIS:NE2	1:P:178:ASP:HB2	2.09	0.68
1:D:78:ILE:HG13	1:D:78:ILE:O	1.94	0.68

Continued on next page...

Continued from previous page...

Atom-1	Atom-2	Interatomic distance (Å)	Clash overlap (Å)
1:J:438:PRO:HB3	1:J:506:PHE:CE2	2.29	0.68
1:P:8:VAL:HG11	1:P:24:LEU:HD13	1.74	0.68
1:G:108:ARG:HD3	1:P:30:ARG:NH1	2.08	0.68
1:M:24:LEU:HD12	1:M:31:PRO:HG3	1.75	0.67
1:P:8:VAL:HA	1:P:154:TYR:O	1.94	0.67
1:D:184:TYR:CZ	1:D:276:ARG:HD3	2.30	0.67
1:P:455:PRO:CB	1:P:509:GLU:HG3	2.24	0.67
1:G:175:GLY:HA3	1:G:282:ARG:HG2	1.75	0.67
1:G:312:LEU:HD13	1:G:351:VAL:HG21	1.75	0.67
1:J:449:ALA:HB3	1:J:498:LEU:HD23	1.75	0.67
1:M:8:VAL:HG13	1:M:31:PRO:HB3	1.75	0.67
1:M:214:LEU:HD23	1:M:223:ALA:HB2	1.75	0.67
1:D:9:VAL:HG23	1:D:152:THR:HB	1.76	0.66
1:J:80:GLU:HA	1:J:84:MET:O	1.95	0.66
1:P:44:PRO:HD3	1:P:273:TRP:CE3	2.30	0.66
1:D:153:ARG:O	1:D:291:ARG:HD3	1.95	0.66
1:J:281:THR:HG23	1:J:352:LEU:HG	1.78	0.66
1:M:475:THR:HG21	1:M:491:ALA:CA	2.25	0.66
1:J:130:VAL:HG22	1:J:168:TRP:CE3	2.31	0.66
1:D:469:GLU:HB3	1:D:470:PRO:HD2	1.77	0.66
1:G:410:LEU:HD13	1:G:416:PRO:HG3	1.78	0.66
1:J:390:ASN:HA	1:J:395:MET:CE	2.24	0.66
1:P:181:ILE:HA	1:P:237:GLU:O	1.96	0.66
1:M:9:VAL:HG23	1:M:152:THR:HB	1.78	0.66
1:D:2:LEU:HD12	1:D:3:PRO:HD2	1.78	0.65
1:D:15:PRO:HG2	1:D:103:GLN:HE21	1.61	0.65
1:J:361:LEU:HD21	1:J:375:PHE:CE2	2.32	0.65
1:A:205:PRO:HG2	1:A:264:THR:OG1	1.96	0.65
1:G:46:ALA:HB3	1:G:103:GLN:CB	2.19	0.65
1:G:12:GLY:HA3	1:G:158:CYS:O	1.97	0.65
1:J:478:LEU:HD22	1:J:502:LEU:HG	1.78	0.65
1:D:222:PHE:CE2	1:D:224:GLN:HB2	2.31	0.65
1:P:426:ARG:HH22	1:P:468:ALA:HB1	1.61	0.65
1:P:238:TRP:CD2	1:P:364:PRO:HD3	2.32	0.65
1:G:62:LEU:O	1:G:65:ARG:HG2	1.97	0.65
1:J:487:TRP:CE3	1:J:498:LEU:HD13	2.32	0.65
1:J:8:VAL:HG11	1:J:24:LEU:HD13	1.78	0.65
1:P:390:ASN:HA	1:P:395:MET:HE3	1.79	0.65
1:A:190:VAL:HG22	1:A:231:HIS:CD2	2.32	0.65
1:D:175:GLY:CA	1:D:282:ARG:HG2	2.26	0.64
1:D:182:LEU:HD21	1:D:276:ARG:HD2	1.78	0.64

Continued on next page...

Continued from previous page...

Atom-1	Atom-2	Interatomic distance (Å)	Clash overlap (Å)
1:G:492:ALA:CB	1:J:89:ARG:HB3	2.26	0.64
1:G:350:ARG:NH2	1:G:391:LEU:HD13	2.11	0.64
1:P:8:VAL:HG13	1:P:31:PRO:HB3	1.78	0.64
1:G:250:THR:HG22	1:G:252:GLU:H	1.62	0.64
1:M:183:THR:CB	1:M:236:THR:HG22	2.27	0.64
1:D:212:LEU:O	1:D:212:LEU:HD23	1.98	0.64
1:J:315:GLN:HB2	1:J:344:ARG:NH2	2.13	0.64
1:D:132:GLN:HG3	1:D:137:VAL:HG22	1.79	0.64
1:G:9:VAL:HG23	1:G:152:THR:HB	1.80	0.64
1:J:433:MET:HE1	1:J:479:ILE:CG2	2.26	0.64
1:J:46:ALA:HA	2:J:601:FAD:N5	2.13	0.64
1:M:421:VAL:HB	1:M:466:ARG:HG3	1.78	0.64
1:A:69:GLU:HB3	1:A:105:LYS:HD3	1.79	0.64
1:G:86:LEU:HD13	1:G:385:LEU:HD11	1.80	0.64
1:J:49:ILE:HD11	1:J:53:ILE:CG2	2.26	0.64
1:A:29:ILE:O	1:A:31:PRO:HD3	1.98	0.64
1:M:476:ALA:HB1	1:M:487:TRP:HZ3	1.63	0.64
1:J:2:LEU:HD23	1:J:3:PRO:HD2	1.79	0.64
1:M:440:LEU:HD11	1:M:462:ILE:HG23	1.78	0.64
1:A:46:ALA:HB3	1:A:103:GLN:CB	2.19	0.64
1:A:128:LEU:HB2	1:A:140:HIS:CD2	2.29	0.64
1:A:371:LEU:O	1:A:374:VAL:HG12	1.97	0.64
1:G:10:ILE:HD12	1:G:20:LEU:CD2	2.21	0.63
1:J:203:ASP:O	1:J:206:GLY:HA2	1.98	0.63
1:M:96:LEU:HB2	1:M:389:VAL:CG1	2.28	0.63
1:G:52:ARG:HD2	1:G:414:TRP:CE2	2.32	0.63
1:G:69:GLU:HB3	1:G:105:LYS:HD3	1.80	0.63
1:J:251:LEU:HD22	1:J:271:PRO:HB3	1.81	0.63
1:M:183:THR:OG1	1:M:277:VAL:HG23	1.99	0.63
1:G:223:ALA:HB3	1:G:234:ALA:HB3	1.79	0.63
1:P:351:VAL:O	1:P:355:THR:HG23	1.99	0.63
1:J:13:ALA:HB2	1:J:35:GLU:HB2	1.81	0.62
1:P:487:TRP:CE3	1:P:498:LEU:HD13	2.34	0.62
1:G:204:LEU:HB2	1:G:208:GLY:O	1.98	0.62
1:A:398:ARG:HG3	1:A:412:GLY:O	1.99	0.62
1:D:487:TRP:CE3	1:D:498:LEU:HD13	2.34	0.62
1:J:361:LEU:HD11	1:J:375:PHE:CZ	2.33	0.62
1:M:408:HIS:CG	1:M:409:PRO:HD2	2.34	0.62
1:A:191:PRO:CD	1:A:267:PRO:HG3	2.30	0.62
1:D:214:LEU:H	1:D:214:LEU:HD12	1.64	0.62
1:J:385:LEU:O	1:J:389:VAL:HG23	2.00	0.62

Continued on next page...

Continued from previous page...

Atom-1	Atom-2	Interatomic distance (Å)	Clash overlap (Å)
1:M:363:ALA:N	1:M:364:PRO:HD2	2.14	0.62
1:P:78:ILE:HG13	1:P:98:ARG:NH2	2.15	0.62
1:A:77:PRO:HB2	1:A:89:ARG:HD3	1.82	0.62
1:G:34:LEU:HD13	1:G:141:VAL:HG21	1.80	0.62
1:J:433:MET:HE1	1:J:479:ILE:HG21	1.81	0.62
1:M:8:VAL:HA	1:M:154:TYR:O	2.00	0.61
1:D:195:VAL:O	1:D:196:ILE:HD13	2.00	0.61
1:M:125:HIS:HB3	1:M:141:VAL:HG21	1.83	0.61
1:P:411:VAL:HG22	1:P:487:TRP:HA	1.83	0.61
1:A:351:VAL:O	1:A:355:THR:HG23	1.99	0.61
1:P:13:ALA:HB2	1:P:35:GLU:HB2	1.82	0.61
1:P:90:LYS:HD2	1:P:385:LEU:HD22	1.81	0.61
1:P:270:SER:N	1:P:271:PRO:HD3	2.15	0.61
1:G:310:LEU:HG	2:G:601:FAD:H2'	1.82	0.61
1:J:351:VAL:HA	1:J:354:HIS:CE1	2.36	0.61
1:G:114:ALA:HB1	1:G:119:VAL:CG2	2.30	0.61
1:P:173:PHE:O	1:P:282:ARG:HD3	2.00	0.61
1:D:52:ARG:HD2	1:D:414:TRP:CE2	2.36	0.61
1:J:190:VAL:HG22	1:J:191:PRO:HD2	1.83	0.61
1:J:418:PHE:O	1:J:429:VAL:HG23	2.01	0.60
1:A:331:TRP:CD2	1:A:459:ARG:HD3	2.36	0.60
1:J:196:ILE:HG22	1:J:201:GLU:H	1.66	0.60
1:D:66:PHE:HE2	1:D:106:ILE:HG23	1.66	0.60
1:J:225:VAL:CG2	1:J:232:ARG:HB2	2.30	0.60
1:D:79:PHE:HB2	1:D:88:LEU:HD11	1.84	0.60
1:D:418:PHE:O	1:D:429:VAL:HG23	2.01	0.60
1:M:404:SER:HB3	1:M:407:SER:HB3	1.81	0.60
1:M:256:GLN:O	1:M:260:ARG:HG3	2.02	0.60
1:G:455:PRO:HB2	1:G:510:PRO:HD2	1.83	0.60
1:M:249:ALA:HB3	1:M:274:VAL:HG23	1.84	0.60
1:M:303:SER:O	1:M:304:SER:HB2	2.00	0.60
1:A:375:PHE:O	1:A:379:LEU:HD13	2.02	0.60
1:J:137:VAL:CG2	1:J:291:ARG:HB2	2.31	0.60
1:D:351:VAL:O	1:D:355:THR:HG23	2.02	0.59
1:A:350:ARG:O	1:A:353:MET:HB3	2.02	0.59
1:M:454:ALA:N	1:M:455:PRO:HD2	2.17	0.59
1:P:9:VAL:O	1:P:155:LEU:HD12	2.02	0.59
1:P:408:HIS:CG	1:P:409:PRO:HD2	2.36	0.59
1:A:179:GLU:HA	1:A:242:VAL:HG21	1.84	0.59
1:G:77:PRO:HA	1:G:88:LEU:HD11	1.85	0.59
1:J:411:VAL:HG22	1:J:487:TRP:HA	1.83	0.59

Continued on next page...

Continued from previous page...

Atom-1	Atom-2	Interatomic distance (Å)	Clash overlap (Å)
1:P:67:THR:HA	1:P:99:MET:HE2	1.84	0.59
1:P:393:GLY:HA3	1:P:395:MET:HE2	1.84	0.59
1:P:432:LEU:HD23	1:P:463:VAL:HG11	1.85	0.59
1:J:347:VAL:O	1:J:351:VAL:HG23	2.02	0.59
1:P:379:LEU:HD21	1:P:388:PHE:CG	2.38	0.59
1:J:455:PRO:HB2	1:J:510:PRO:HD2	1.85	0.59
1:M:364:PRO:HG3	1:M:368:ILE:HB	1.85	0.59
1:P:141:VAL:O	1:P:147:GLU:HA	2.03	0.59
1:A:455:PRO:O	1:A:510:PRO:HG2	2.03	0.59
1:G:54:ILE:HG21	1:G:97:ARG:HG2	1.83	0.59
1:G:104:TRP:CZ2	1:G:105:LYS:HE3	2.36	0.59
1:G:102:PRO:HB2	1:G:104:TRP:CD1	2.37	0.59
1:J:361:LEU:HD21	1:J:375:PHE:CD2	2.37	0.59
1:D:108:ARG:HD2	1:M:30:ARG:NH1	2.18	0.59
1:P:81:PHE:CE1	1:P:358:GLN:HG2	2.28	0.59
1:D:56:VAL:HA	1:D:59:PHE:CD2	2.38	0.59
1:G:36:ARG:CB	1:G:126:GLU:HB2	2.32	0.59
1:M:391:LEU:HD12	1:M:396:ASP:OD2	2.03	0.59
1:P:259:GLU:OE1	1:P:263:GLY:HA2	2.03	0.59
1:A:163:SER:HB3	1:A:166:ARG:NH1	2.18	0.58
1:G:379:LEU:HB3	1:G:385:LEU:HD13	1.85	0.58
1:M:364:PRO:CG	1:M:368:ILE:HB	2.32	0.58
1:A:13:ALA:HB2	1:A:35:GLU:HB2	1.85	0.58
1:J:370:GLN:OE1	1:J:373:LYS:HD2	2.04	0.58
1:M:440:LEU:HA	1:M:477:LEU:O	2.04	0.58
1:D:442:ASP:O	1:D:464:THR:HG23	2.04	0.58
1:M:50:ASN:HA	1:M:54:ILE:CD1	2.32	0.58
1:P:13:ALA:CB	1:P:35:GLU:HB2	2.34	0.58
1:D:238:TRP:CE3	1:D:364:PRO:HD3	2.37	0.58
1:G:315:GLN:O	1:G:318:VAL:HG12	2.04	0.58
1:M:178:ASP:OD1	1:M:181:ILE:HG13	2.04	0.58
1:M:443:LEU:HB2	1:M:475:THR:O	2.02	0.58
1:P:46:ALA:CB	1:P:103:GLN:HB2	2.24	0.58
1:M:456:TRP:CE3	1:M:502:LEU:HD13	2.38	0.58
1:M:480:ARG:HB2	1:M:482:ASP:OD1	2.02	0.58
1:D:218:ASP:O	1:D:364:PRO:HB2	2.03	0.58
1:J:408:HIS:HB2	1:J:488:ALA:O	2.03	0.58
1:M:202:LEU:HD11	1:M:224:GLN:HG2	1.86	0.58
1:A:379:LEU:HD11	1:A:388:PHE:CE2	2.38	0.58
1:M:10:ILE:HB	1:M:33:VAL:HA	1.86	0.58
1:P:149:ARG:HG2	1:P:149:ARG:HH11	1.68	0.58

Continued on next page...

Continued from previous page...

Atom-1	Atom-2	Interatomic distance (Å)	Clash overlap (Å)
1:P:166:ARG:HG3	1:P:294:LEU:HD11	1.86	0.58
1:P:88:LEU:HB2	1:P:94:ILE:CD1	2.34	0.57
1:P:96:LEU:HB2	1:P:389:VAL:CG1	2.34	0.57
1:P:286:ASP:HA	1:P:341:GLN:HE22	1.69	0.57
1:D:9:VAL:HG23	1:D:152:THR:CB	2.33	0.57
1:P:166:ARG:HD3	1:P:298:ALA:O	2.04	0.57
1:D:265:ARG:HH12	1:D:267:PRO:HA	1.68	0.57
1:J:487:TRP:CH2	1:J:498:LEU:HB2	2.40	0.57
1:A:379:LEU:HD11	1:A:388:PHE:CZ	2.40	0.57
1:J:221:MET:CE	1:J:236:THR:HG22	2.34	0.57
1:D:442:ASP:HB2	1:D:449:ALA:HB3	1.86	0.57
1:M:354:HIS:CE1	1:M:391:LEU:HD11	2.36	0.57
1:D:480:ARG:HB2	1:D:482:ASP:OD1	2.05	0.57
1:M:487:TRP:CE3	1:M:498:LEU:HD13	2.40	0.57
1:P:455:PRO:HB3	1:P:509:GLU:HG3	1.86	0.57
1:P:281:THR:HG21	1:P:356:GLN:NE2	2.19	0.56
1:A:171:ILE:HD13	1:A:289:ARG:NH2	2.20	0.56
1:D:103:GLN:HA	1:D:106:ILE:HD12	1.87	0.56
1:J:453:ALA:HA	1:J:456:TRP:HE3	1.71	0.56
1:M:66:PHE:CD1	1:M:109:LEU:HD13	2.40	0.56
1:P:102:PRO:HD2	1:P:105:LYS:HD2	1.87	0.56
1:A:235:VAL:HG23	1:A:261:VAL:HG21	1.87	0.56
1:A:408:HIS:CG	1:A:409:PRO:HD2	2.41	0.56
1:D:303:SER:HB3	1:D:305:THR:HG22	1.87	0.56
1:J:107:GLU:O	1:J:111:ASN:HB2	2.05	0.56
1:P:63:LEU:O	1:P:67:THR:HG23	2.05	0.56
1:D:130:VAL:HG12	1:D:139:VAL:HA	1.88	0.56
1:J:184:TYR:CZ	1:J:276:ARG:HD3	2.41	0.56
1:M:75:ARG:HB3	1:M:94:ILE:HB	1.88	0.56
1:A:226:ARG:HA	1:A:231:HIS:HA	1.87	0.56
1:G:76:LEU:HD12	1:G:98:ARG:NH1	2.21	0.56
1:J:44:PRO:HG2	1:J:273:TRP:CD1	2.40	0.56
1:P:399:TYR:HB2	1:P:401:PHE:HE1	1.70	0.56
1:G:104:TRP:HZ3	1:G:108:ARG:NH2	2.03	0.56
1:D:315:GLN:O	1:D:318:VAL:HG12	2.06	0.55
1:D:408:HIS:CG	1:D:409:PRO:HD2	2.41	0.55
1:G:91:LEU:HD21	1:G:385:LEU:HB3	1.87	0.55
1:G:131:ASP:OD1	1:G:138:HIS:HB2	2.07	0.55
1:A:191:PRO:HD2	1:A:267:PRO:HG3	1.88	0.55
1:D:183:THR:HB	1:D:277:VAL:HG23	1.89	0.55
1:G:52:ARG:NH2	1:G:395:MET:HA	2.20	0.55

Continued on next page...

Continued from previous page...

Atom-1	Atom-2	Interatomic distance (Å)	Clash overlap (Å)
1:J:53:ILE:HG12	1:J:314:LEU:HD12	1.88	0.55
1:M:440:LEU:HB3	1:M:478:LEU:HD13	1.87	0.55
1:D:91:LEU:HD11	1:D:385:LEU:HB3	1.88	0.55
1:G:49:ILE:HD11	1:G:53:ILE:HG21	1.88	0.55
1:G:287:TYR:HB2	1:G:341:GLN:HB2	1.87	0.55
1:J:194:LEU:HB2	1:J:202:LEU:HD23	1.89	0.55
1:J:212:LEU:HD12	1:J:224:GLN:O	2.06	0.55
1:D:166:ARG:HH21	1:D:167:LYS:HE2	1.71	0.55
1:D:224:GLN:HG3	1:D:233:LEU:CD2	2.36	0.55
1:D:308:PRO:HG3	1:D:351:VAL:HG22	1.89	0.55
1:G:249:ALA:N	1:G:276:ARG:HH21	2.05	0.55
1:P:293:LEU:HD22	1:P:320:LEU:HD11	1.89	0.55
1:D:438:PRO:HB2	1:D:460:VAL:HG13	1.88	0.55
1:J:179:GLU:O	1:J:242:VAL:HG22	2.07	0.55
1:M:286:ASP:HA	1:M:341:GLN:NE2	2.22	0.55
1:M:476:ALA:HB1	1:M:487:TRP:CZ3	2.42	0.55
1:P:413:GLY:O	1:P:485:VAL:HG23	2.07	0.55
1:A:81:PHE:CE2	1:A:358:GLN:HG2	2.42	0.55
1:A:254:LEU:O	1:A:258:ILE:HG13	2.07	0.55
1:A:368:ILE:O	1:A:372:ARG:HG3	2.07	0.55
1:G:177:THR:HG23	1:G:280:ASN:HB2	1.89	0.55
1:G:222:PHE:HA	1:G:234:ALA:O	2.07	0.55
1:J:255:GLY:HA3	1:J:265:ARG:NH1	2.22	0.55
1:A:102:PRO:O	1:A:106:ILE:HG13	2.07	0.55
1:D:416:PRO:HD2	1:D:477:LEU:CD2	2.36	0.55
1:G:459:ARG:NH2	1:G:507:GLY:HA3	2.22	0.55
1:D:222:PHE:HE2	1:D:224:GLN:HB2	1.71	0.54
1:A:202:LEU:HG	1:A:224:GLN:CG	2.38	0.54
1:A:350:ARG:HH21	1:A:391:LEU:HD13	1.72	0.54
1:G:237:GLU:HG2	1:G:261:VAL:HG11	1.89	0.54
1:G:374:VAL:O	1:G:378:LEU:HG	2.06	0.54
1:G:492:ALA:HB3	1:J:89:ARG:CB	2.30	0.54
1:M:60:ARG:CB	1:M:62:LEU:HD13	2.33	0.54
1:M:345:ARG:HB3	1:M:346:PRO:HD3	1.90	0.54
1:P:286:ASP:HA	1:P:341:GLN:NE2	2.22	0.54
1:D:235:VAL:HG11	1:D:257:ALA:HB1	1.89	0.54
1:J:454:ALA:N	1:J:455:PRO:HD2	2.22	0.54
1:P:410:LEU:CD1	1:P:416:PRO:HG3	2.37	0.54
1:A:331:TRP:CG	1:A:459:ARG:HD3	2.42	0.54
1:G:310:LEU:O	1:G:314:LEU:HB2	2.08	0.54
1:M:442:ASP:HB3	1:M:464:THR:HA	1.90	0.54

Continued on next page...

Continued from previous page...

Atom-1	Atom-2	Interatomic distance (Å)	Clash overlap (Å)
1:A:66:PHE:HE2	1:A:106:ILE:HG23	1.72	0.54
1:A:466:ARG:HG2	1:A:467:ALA:H	1.73	0.54
1:D:164:ARG:HG2	1:D:168:TRP:CZ2	2.43	0.54
1:D:440:LEU:HD21	1:D:449:ALA:HB1	1.88	0.54
1:A:40:ALA:HB2	1:A:123:ARG:NH1	2.15	0.54
1:A:211:ARG:HG2	1:A:213:GLY:H	1.73	0.54
1:J:408:HIS:CG	1:J:409:PRO:HD2	2.42	0.54
1:P:11:VAL:HG23	1:P:155:LEU:HD11	1.88	0.54
1:A:87:ASP:OD1	1:A:89:ARG:NE	2.41	0.54
1:D:420:VAL:HG11	1:D:441:LEU:HD21	1.88	0.54
1:J:351:VAL:O	1:J:355:THR:HG23	2.07	0.54
1:J:417:ASP:OD1	1:J:429:VAL:HB	2.07	0.54
1:M:112:GLY:O	1:M:116:GLU:HG3	2.07	0.54
1:G:287:TYR:CE1	1:G:299:ALA:HB1	2.42	0.54
1:P:426:ARG:NH2	1:P:468:ALA:HB1	2.23	0.54
1:M:283:LEU:HD12	1:M:299:ALA:O	2.08	0.53
1:A:79:PHE:HD1	1:A:80:GLU:N	2.06	0.53
1:D:30:ARG:O	1:D:30:ARG:HG3	2.07	0.53
1:D:388:PHE:CE1	1:D:392:PHE:HE2	2.27	0.53
1:G:453:ALA:HB2	1:G:502:LEU:HD11	1.90	0.53
1:J:179:GLU:HA	1:J:242:VAL:CG2	2.38	0.53
1:J:196:ILE:HG21	1:J:209:ARG:HH21	1.73	0.53
1:J:426:ARG:HH21	1:J:468:ALA:CB	2.21	0.53
1:P:238:TRP:CZ2	1:P:363:ALA:HA	2.42	0.53
1:A:401:PHE:HB3	1:A:402:PRO:HD2	1.90	0.53
1:J:438:PRO:HB3	1:J:506:PHE:CZ	2.44	0.53
1:P:122:ARG:HB3	1:P:125:HIS:CE1	2.43	0.53
1:P:432:LEU:CD2	1:P:463:VAL:HG11	2.38	0.53
1:A:459:ARG:NH1	1:A:507:GLY:HA3	2.23	0.53
1:G:421:VAL:O	1:G:465:ALA:HB1	2.08	0.53
1:J:411:VAL:CG2	1:J:487:TRP:HA	2.37	0.53
1:M:251:LEU:CD2	1:M:269:SER:HB3	2.38	0.53
1:P:56:VAL:HA	1:P:59:PHE:CD2	2.44	0.53
1:P:174:PRO:HG3	1:P:285:ASP:OD1	2.09	0.53
1:M:183:THR:HG22	1:M:236:THR:HB	1.91	0.53
1:P:61:GLY:HA3	1:P:434:HIS:CD2	2.44	0.53
1:G:34:LEU:CD1	1:G:141:VAL:HG21	2.39	0.53
1:J:148:GLN:CD	1:J:150:ILE:HG13	2.34	0.53
1:J:177:THR:HA	1:J:279:ASP:O	2.09	0.53
1:A:348:ALA:O	1:A:352:LEU:HD13	2.08	0.53
1:D:175:GLY:HA3	1:D:282:ARG:CG	2.31	0.53

Continued on next page...

Continued from previous page...

Atom-1	Atom-2	Interatomic distance (Å)	Clash overlap (Å)
1:G:52:ARG:HD2	1:G:414:TRP:CD2	2.43	0.53
1:J:302:HIS:CE1	1:J:308:PRO:HG2	2.44	0.53
1:M:404:SER:HB3	1:M:407:SER:CB	2.39	0.53
1:P:29:ILE:O	1:P:31:PRO:HD3	2.09	0.53
1:A:108:ARG:HD2	1:G:423:ALA:O	2.08	0.53
1:A:212:LEU:O	1:A:225:VAL:HG22	2.08	0.53
1:G:120:ASP:CG	1:G:122:ARG:HE	2.16	0.52
1:G:454:ALA:N	1:G:455:PRO:HD2	2.24	0.52
1:J:256:GLN:O	1:J:260:ARG:HG3	2.09	0.52
1:P:183:THR:HA	1:P:235:VAL:O	2.09	0.52
1:P:186:GLY:HA3	1:P:233:LEU:H	1.75	0.52
1:P:337:LEU:O	1:P:340:TYR:HB3	2.10	0.52
1:A:251:LEU:HD12	1:A:251:LEU:H	1.73	0.52
1:M:364:PRO:HG3	1:M:368:ILE:CB	2.40	0.52
1:A:125:HIS:HB3	1:A:141:VAL:CG1	2.40	0.52
1:A:431:ASP:HA	1:A:434:HIS:CE1	2.44	0.52
1:D:357:ALA:O	1:D:361:LEU:HD23	2.09	0.52
1:J:196:ILE:HG22	1:J:201:GLU:O	2.09	0.52
1:M:174:PRO:HD2	1:M:283:LEU:O	2.09	0.52
1:D:6:ALA:O	1:D:152:THR:HA	2.10	0.52
1:G:81:PHE:HE1	1:G:358:GLN:HB2	1.74	0.52
1:J:13:ALA:CB	1:J:35:GLU:HB2	2.38	0.52
1:J:171:ILE:HG21	1:J:286:ASP:O	2.10	0.52
1:M:8:VAL:CG1	1:M:31:PRO:HB3	2.38	0.52
1:P:214:LEU:HD23	1:P:221:MET:HE3	1.90	0.52
1:D:81:PHE:CZ	1:D:358:GLN:HG2	2.45	0.52
1:D:231:HIS:O	1:D:233:LEU:HG	2.10	0.52
1:G:132:GLN:HG3	1:G:137:VAL:HG22	1.90	0.52
1:J:323:LYS:O	1:J:327:VAL:HG23	2.09	0.52
1:M:9:VAL:HB	1:M:155:LEU:CD1	2.38	0.52
1:J:426:ARG:C	1:J:427:ARG:HG2	2.34	0.52
1:J:439:LEU:O	1:J:478:LEU:HA	2.09	0.52
1:M:63:LEU:HD11	1:M:99:MET:HE3	1.91	0.52
1:G:408:HIS:ND1	1:G:409:PRO:HD2	2.24	0.52
1:M:315:GLN:HA	1:M:318:VAL:HG22	1.92	0.52
1:M:421:VAL:HA	1:M:425:GLY:O	2.10	0.52
1:A:59:PHE:HZ	1:A:414:TRP:CZ2	2.28	0.52
1:P:345:ARG:HB3	1:P:346:PRO:HD3	1.92	0.52
1:A:201:GLU:C	1:A:202:LEU:HD23	2.35	0.52
1:A:319:ASN:HD22	1:A:344:ARG:HD3	1.75	0.52
1:G:203:ASP:C	1:G:204:LEU:HD22	2.35	0.52

Continued on next page...

Continued from previous page...

Atom-1	Atom-2	Interatomic distance (Å)	Clash overlap (Å)
1:J:311:ASN:O	1:J:315:GLN:HG3	2.10	0.52
1:M:443:LEU:HA	1:M:465:ALA:O	2.10	0.52
1:D:129:ALA:HA	1:D:168:TRP:CZ2	2.44	0.51
1:D:182:LEU:HD11	1:D:276:ARG:CG	2.40	0.51
1:G:310:LEU:HG	2:G:601:FAD:N1	2.25	0.51
1:J:29:ILE:O	1:J:31:PRO:HD3	2.10	0.51
1:J:66:PHE:HB3	1:J:99:MET:SD	2.50	0.51
1:M:75:ARG:O	1:M:94:ILE:HD12	2.11	0.51
1:J:453:ALA:HB2	1:J:502:LEU:CD1	2.40	0.51
1:M:5:ASP:HB2	1:M:150:ILE:HG23	1.92	0.51
1:P:185:LEU:CB	1:P:275:THR:HG22	2.41	0.51
1:A:221:MET:HG2	1:A:222:PHE:N	2.25	0.51
1:D:257:ALA:HA	1:D:260:ARG:HE	1.76	0.51
1:M:102:PRO:HD2	1:M:105:LYS:HD2	1.92	0.51
1:D:312:LEU:HD22	1:D:351:VAL:HG11	1.92	0.51
1:G:449:ALA:HA	1:G:498:LEU:CD2	2.40	0.51
1:M:354:HIS:O	1:M:358:GLN:HG3	2.10	0.51
1:J:221:MET:HG2	1:J:222:PHE:N	2.26	0.51
1:M:13:ALA:HB3	1:M:35:GLU:HB2	1.92	0.51
1:P:175:GLY:CA	1:P:282:ARG:HG2	2.38	0.51
1:P:467:ALA:HB1	1:P:472:PRO:HG3	1.92	0.51
1:A:295:VAL:HG22	1:A:340:TYR:OH	2.11	0.51
1:D:202:LEU:CD2	1:D:224:GLN:HG2	2.41	0.51
1:J:201:GLU:HG2	1:J:211:ARG:HA	1.91	0.51
1:M:13:ALA:CB	1:M:35:GLU:HB2	2.41	0.51
1:M:76:LEU:O	1:M:94:ILE:HD13	2.11	0.51
1:A:46:ALA:HB2	1:A:103:GLN:OE1	2.11	0.51
1:D:341:GLN:O	1:D:345:ARG:HB3	2.10	0.51
1:G:158:CYS:SG	1:G:295:VAL:HB	2.51	0.51
1:J:6:ALA:O	1:J:152:THR:HA	2.11	0.51
1:J:22:CYS:O	1:J:26:LEU:HD23	2.11	0.51
1:J:182:LEU:HD21	1:J:276:ARG:CD	2.34	0.51
1:J:398:ARG:HG3	1:J:412:GLY:O	2.11	0.51
1:P:183:THR:HG23	1:P:235:VAL:O	2.11	0.51
1:D:122:ARG:HB3	1:D:125:HIS:ND1	2.26	0.50
1:J:132:GLN:HB3	1:J:137:VAL:HG22	1.92	0.50
1:J:226:ARG:HG3	1:J:230:VAL:O	2.11	0.50
1:A:191:PRO:HD3	1:A:267:PRO:HG3	1.92	0.50
1:J:251:LEU:HD11	1:J:268:LEU:CD1	2.41	0.50
1:A:52:ARG:HD2	1:A:414:TRP:CD2	2.46	0.50
1:D:454:ALA:N	1:D:455:PRO:HD2	2.25	0.50

Continued on next page...

Continued from previous page...

Atom-1	Atom-2	Interatomic distance (Å)	Clash overlap (Å)
1:J:56:VAL:HG22	1:J:59:PHE:HE2	1.77	0.50
1:P:467:ALA:CB	1:P:472:PRO:HG3	2.42	0.50
1:A:202:LEU:HG	1:A:224:GLN:CD	2.37	0.50
1:G:35:GLU:HG3	1:G:37:MET:H	1.76	0.50
1:J:322:TRP:HZ2	1:J:480:ARG:HH21	1.59	0.50
1:P:12:GLY:HA3	1:P:158:CYS:O	2.12	0.50
1:P:410:LEU:HD13	1:P:416:PRO:HG3	1.92	0.50
1:A:35:GLU:HB3	1:A:123:ARG:HG2	1.93	0.50
1:J:52:ARG:HD2	1:J:414:TRP:CE2	2.46	0.50
1:J:182:LEU:CD2	1:J:276:ARG:HD2	2.33	0.50
1:J:453:ALA:HA	1:J:456:TRP:CE3	2.46	0.50
1:P:56:VAL:HG13	1:P:59:PHE:CZ	2.46	0.50
1:J:440:LEU:HD22	1:J:453:ALA:CB	2.42	0.50
1:D:77:PRO:CB	1:D:89:ARG:HG3	2.42	0.50
1:A:174:PRO:HD2	1:A:283:LEU:O	2.12	0.50
1:M:408:HIS:HB2	1:M:488:ALA:O	2.12	0.50
1:P:77:PRO:O	1:P:78:ILE:HG23	2.12	0.50
1:J:487:TRP:CZ3	1:J:498:LEU:HB2	2.47	0.49
1:A:173:PHE:HZ	1:A:301:VAL:HG13	1.76	0.49
1:J:194:LEU:CB	1:J:202:LEU:HD23	2.43	0.49
1:M:9:VAL:HB	1:M:155:LEU:HD12	1.94	0.49
1:P:455:PRO:O	1:P:510:PRO:HG2	2.12	0.49
1:M:31:PRO:O	1:M:120:ASP:HB3	2.13	0.49
1:J:182:LEU:HD11	1:J:276:ARG:HD2	1.94	0.49
1:M:285:ASP:HA	1:M:345:ARG:HH21	1.77	0.49
1:P:487:TRP:CZ3	1:P:498:LEU:HD13	2.46	0.49
1:G:82:SER:HB3	1:G:372:ARG:HH12	1.77	0.49
1:J:14:GLY:HA3	2:J:601:FAD:O1P	2.12	0.49
1:D:46:ALA:HB3	1:D:103:GLN:HB2	1.94	0.49
1:J:251:LEU:HD11	1:J:268:LEU:HD13	1.93	0.49
1:J:265:ARG:HG2	1:J:266:ILE:N	2.28	0.49
1:J:376:LEU:O	1:J:380:GLU:HG3	2.13	0.49
1:D:194:LEU:HB3	1:D:203:ASP:OD2	2.13	0.49
1:D:204:LEU:HD11	1:D:266:ILE:HD11	1.94	0.49
1:D:288:ARG:HG3	1:D:293:LEU:HG	1.95	0.49
1:J:24:LEU:HD13	1:J:31:PRO:HB3	1.95	0.49
1:J:426:ARG:HH21	1:J:468:ALA:HB3	1.77	0.49
1:J:455:PRO:O	1:J:510:PRO:HG2	2.13	0.49
1:J:487:TRP:HB2	1:J:501:ALA:HB2	1.95	0.49
1:M:374:VAL:O	1:M:378:LEU:HG	2.13	0.49
1:P:91:LEU:HG	1:P:385:LEU:HD23	1.95	0.49

Continued on next page...

Continued from previous page...

Atom-1	Atom-2	Interatomic distance (Å)	Clash overlap (Å)
1:P:354:HIS:O	1:P:358:GLN:HG3	2.12	0.49
1:A:441:LEU:HD12	1:A:463:VAL:HG13	1.95	0.49
1:J:179:GLU:HA	1:J:242:VAL:HG21	1.95	0.49
1:D:232:ARG:O	1:D:233:LEU:HD23	2.13	0.49
1:J:20:LEU:CD2	1:J:156:VAL:HG11	2.43	0.49
1:J:8:VAL:HG21	1:J:324:LEU:HD21	1.94	0.49
1:J:441:LEU:O	1:J:476:ALA:HA	2.13	0.49
1:D:9:VAL:CG2	1:D:152:THR:HB	2.42	0.48
1:D:202:LEU:HD21	1:D:224:GLN:HG2	1.94	0.48
1:G:221:MET:O	1:G:235:VAL:HA	2.13	0.48
1:G:426:ARG:HH21	1:G:468:ALA:HB1	1.78	0.48
1:G:453:ALA:HA	1:G:456:TRP:HE3	1.77	0.48
1:M:426:ARG:O	1:M:427:ARG:HG2	2.12	0.48
1:A:91:LEU:HD12	1:A:93:THR:O	2.12	0.48
1:A:266:ILE:HG13	1:A:267:PRO:HD2	1.87	0.48
1:D:179:GLU:OE1	1:D:179:GLU:HA	2.13	0.48
1:A:470:PRO:O	1:A:472:PRO:HD3	2.12	0.48
1:D:204:LEU:HD11	1:D:266:ILE:CD1	2.43	0.48
1:G:10:ILE:HG23	1:G:10:ILE:O	2.14	0.48
1:A:361:LEU:HD12	1:A:372:ARG:HG2	1.94	0.48
1:D:184:TYR:OH	1:D:276:ARG:HD3	2.13	0.48
1:M:9:VAL:HG23	1:M:152:THR:CB	2.42	0.48
1:P:254:LEU:C	1:P:254:LEU:HD12	2.38	0.48
1:J:453:ALA:HB2	1:J:502:LEU:HD11	1.96	0.48
1:M:364:PRO:HG3	1:M:368:ILE:HG21	1.94	0.48
1:M:479:ILE:HG12	1:M:485:VAL:HG22	1.94	0.48
1:P:422:THR:HB	1:P:465:ALA:HB2	1.96	0.48
1:P:469:GLU:OE2	1:P:472:PRO:HA	2.13	0.48
1:A:226:ARG:HH21	1:A:229:GLY:HA2	1.78	0.48
1:G:66:PHE:HE2	1:G:106:ILE:HG23	1.79	0.48
1:M:297:ASP:HA	1:M:300:HIS:O	2.14	0.48
1:A:25:ARG:HG3	1:A:119:VAL:HG22	1.95	0.48
1:A:388:PHE:O	1:A:391:LEU:HB3	2.14	0.48
1:G:235:VAL:HG23	1:G:261:VAL:HG21	1.96	0.48
1:M:364:PRO:HB2	1:M:365:GLY:H	1.47	0.48
1:P:181:ILE:HD12	1:P:181:ILE:N	2.29	0.48
1:A:9:VAL:HG23	1:A:152:THR:CB	2.44	0.48
1:D:182:LEU:HD11	1:D:276:ARG:HG3	1.95	0.48
1:G:237:GLU:CG	1:G:261:VAL:HG11	2.43	0.48
1:G:293:LEU:HD22	1:G:320:LEU:HD21	1.94	0.48
1:J:58:GLU:HB2	1:J:63:LEU:HD13	1.95	0.48

Continued on next page...

Continued from previous page...

Atom-1	Atom-2	Interatomic distance (Å)	Clash overlap (Å)
1:A:191:PRO:HD3	1:A:267:PRO:CG	2.44	0.48
1:A:282:ARG:H	1:A:301:VAL:CG2	2.27	0.48
1:P:238:TRP:CE3	1:P:364:PRO:HD3	2.49	0.48
1:A:302:HIS:NE2	1:A:309:GLY:HA2	2.29	0.48
1:A:452:GLU:O	1:A:455:PRO:HD2	2.14	0.48
1:D:137:VAL:CG2	1:D:291:ARG:HB2	2.44	0.48
1:G:323:LYS:O	1:G:327:VAL:HG23	2.13	0.48
1:J:84:MET:HB3	1:J:376:LEU:HD21	1.96	0.48
1:J:183:THR:HB	1:J:277:VAL:CG2	2.44	0.48
1:P:217:THR:OG1	1:P:261:VAL:HG13	2.14	0.48
1:A:136:ALA:HB1	1:A:152:THR:O	2.14	0.47
1:G:89:ARG:NE	1:M:445:GLU:HB3	2.29	0.47
1:J:438:PRO:HG2	1:J:460:VAL:HA	1.96	0.47
1:P:427:ARG:HH21	1:P:431:ASP:HB3	1.79	0.47
1:A:202:LEU:CG	1:A:224:GLN:HG3	2.43	0.47
1:A:272:ARG:HB3	1:A:273:TRP:CE3	2.49	0.47
1:J:80:GLU:HG2	1:J:85:VAL:HG22	1.95	0.47
1:J:102:PRO:HB2	1:J:104:TRP:CD1	2.49	0.47
1:J:336:LEU:HD12	1:J:339:THR:HG21	1.96	0.47
1:M:440:LEU:CD1	1:M:462:ILE:HG23	2.44	0.47
1:A:177:THR:HA	1:A:279:ASP:O	2.15	0.47
1:D:226:ARG:HA	1:D:230:VAL:O	2.15	0.47
1:G:101:ILE:HG13	1:G:102:PRO:HD2	1.95	0.47
1:G:121:LEU:HD21	1:G:123:ARG:NH1	2.29	0.47
1:J:50:ASN:HB3	1:J:98:ARG:HG2	1.95	0.47
1:P:159:ASP:HA	2:P:601:FAD:O4B	2.13	0.47
1:A:179:GLU:HA	1:A:242:VAL:CG2	2.44	0.47
1:A:390:ASN:HA	1:A:395:MET:HE2	1.97	0.47
1:D:56:VAL:HG13	1:D:59:PHE:CZ	2.48	0.47
1:D:66:PHE:CE2	1:D:106:ILE:HG23	2.47	0.47
1:G:76:LEU:HD12	1:G:98:ARG:HH12	1.80	0.47
1:J:180:HIS:HA	1:J:240:ALA:O	2.14	0.47
1:P:77:PRO:HA	1:P:94:ILE:CD1	2.44	0.47
1:A:192:ASP:HA	1:A:195:VAL:HB	1.97	0.47
1:D:443:LEU:HD22	1:D:465:ALA:C	2.40	0.47
1:M:431:ASP:HA	1:M:434:HIS:CE1	2.50	0.47
1:A:52:ARG:HD2	1:A:414:TRP:CE2	2.50	0.47
1:A:374:VAL:O	1:A:378:LEU:HG	2.15	0.47
1:D:148:GLN:HG2	1:D:149:ARG:N	2.28	0.47
1:D:302:HIS:NE2	1:D:309:GLY:CA	2.78	0.47
1:G:46:ALA:HA	2:G:601:FAD:N5	2.30	0.47

Continued on next page...

Continued from previous page...

Atom-1	Atom-2	Interatomic distance (Å)	Clash overlap (Å)
1:G:54:ILE:HD12	1:G:97:ARG:O	2.15	0.47
1:G:453:ALA:HB2	1:G:502:LEU:CD1	2.44	0.47
1:M:398:ARG:HG3	1:M:412:GLY:O	2.15	0.47
1:A:440:LEU:HD21	1:A:449:ALA:HB1	1.97	0.47
1:J:196:ILE:CG2	1:J:201:GLU:H	2.27	0.47
1:J:287:TYR:HB2	1:J:341:GLN:HB2	1.95	0.47
1:A:173:PHE:CZ	1:A:282:ARG:HB2	2.50	0.47
1:A:492:ALA:HB3	1:A:493:PRO:HD3	1.96	0.47
1:G:162:ARG:HB3	1:G:164:ARG:HH12	1.79	0.47
1:J:315:GLN:O	1:J:318:VAL:HG12	2.14	0.47
1:M:111:ASN:O	1:M:115:GLU:HG3	2.14	0.47
1:A:194:LEU:HB3	1:A:203:ASP:O	2.15	0.47
1:A:202:LEU:CD1	1:A:224:GLN:HG3	2.44	0.47
1:D:348:ALA:O	1:D:352:LEU:HD13	2.15	0.47
1:G:79:PHE:HE1	1:G:388:PHE:HE2	1.62	0.47
1:J:2:LEU:HD23	1:J:3:PRO:CD	2.44	0.47
1:P:46:ALA:HB2	1:P:103:GLN:OE1	2.15	0.47
1:A:441:LEU:CD1	1:A:463:VAL:HG13	2.45	0.47
1:D:195:VAL:O	1:D:195:VAL:HG23	2.14	0.47
1:D:418:PHE:HE2	1:D:443:LEU:HD11	1.79	0.47
1:G:443:LEU:HB2	1:G:475:THR:O	2.15	0.47
1:J:401:PHE:HZ	1:J:480:ARG:NH1	2.12	0.47
1:M:80:GLU:CD	1:M:211:ARG:HH22	2.23	0.47
1:A:288:ARG:HB2	1:A:293:LEU:HD23	1.98	0.46
1:D:155:LEU:O	1:D:292:ILE:HA	2.15	0.46
1:D:306:GLY:O	1:D:307:GLY:C	2.57	0.46
1:G:209:ARG:NH2	1:G:211:ARG:HA	2.30	0.46
1:A:422:THR:HG22	1:A:425:GLY:O	2.14	0.46
1:D:207:VAL:HG12	1:D:207:VAL:O	2.16	0.46
1:P:256:GLN:O	1:P:260:ARG:HG3	2.15	0.46
1:A:87:ASP:CG	1:A:89:ARG:HE	2.22	0.46
1:A:121:LEU:HD21	1:A:123:ARG:HE	1.79	0.46
1:P:43:PRO:HG3	1:P:273:TRP:NE1	2.29	0.46
1:D:401:PHE:CE2	1:D:412:GLY:HA2	2.51	0.46
1:J:36:ARG:HA	1:J:125:HIS:O	2.16	0.46
1:M:363:ALA:H	1:M:364:PRO:HD2	1.79	0.46
1:A:226:ARG:HH21	1:A:229:GLY:C	2.24	0.46
1:D:183:THR:OG1	1:D:236:THR:HG23	2.16	0.46
1:D:189:VAL:HG21	1:D:270:SER:HB2	1.93	0.46
1:J:85:VAL:C	1:J:86:LEU:HD23	2.39	0.46
1:J:149:ARG:HD2	1:J:149:ARG:N	2.30	0.46

Continued on next page...

Continued from previous page...

Atom-1	Atom-2	Interatomic distance (Å)	Clash overlap (Å)
1:J:221:MET:O	1:J:235:VAL:HG23	2.15	0.46
1:M:363:ALA:O	1:M:364:PRO:O	2.32	0.46
1:A:62:LEU:O	1:A:66:PHE:HD1	1.98	0.46
1:D:301:VAL:HG23	1:D:301:VAL:O	2.15	0.46
1:D:415:PHE:HB2	1:D:479:ILE:CD1	2.40	0.46
1:G:36:ARG:HB3	1:G:126:GLU:CB	2.43	0.46
1:G:49:ILE:CD1	1:G:53:ILE:HG21	2.46	0.46
1:G:126:GLU:HA	2:G:601:FAD:N1A	2.30	0.46
1:J:445:GLU:HG2	1:J:446:ASP:N	2.30	0.46
1:M:9:VAL:O	1:M:155:LEU:HD12	2.16	0.46
1:M:24:LEU:CD1	1:M:31:PRO:HG3	2.44	0.46
1:M:364:PRO:HB3	1:M:368:ILE:CB	2.42	0.46
1:D:204:LEU:HD23	1:D:204:LEU:HA	1.84	0.46
1:D:418:PHE:HE2	1:D:443:LEU:CD1	2.29	0.46
1:A:441:LEU:O	1:A:476:ALA:HA	2.16	0.46
1:D:173:PHE:CZ	1:D:301:VAL:HG22	2.51	0.46
1:M:88:LEU:HD22	1:M:389:VAL:HG21	1.97	0.46
1:P:418:PHE:O	1:P:429:VAL:HG23	2.15	0.46
1:D:214:LEU:HD12	1:D:214:LEU:N	2.31	0.46
1:D:476:ALA:O	1:D:488:ALA:HA	2.16	0.46
1:G:14:GLY:HA3	2:G:601:FAD:O1P	2.15	0.46
1:J:153:ARG:O	1:J:291:ARG:HD3	2.16	0.46
1:M:96:LEU:HB2	1:M:389:VAL:HG13	1.97	0.46
1:M:440:LEU:HD21	1:M:462:ILE:HG12	1.98	0.46
1:P:503:THR:HA	1:P:507:GLY:O	2.16	0.46
1:D:407:SER:HB2	1:D:411:VAL:HG21	1.98	0.46
1:G:398:ARG:HG3	1:G:412:GLY:O	2.16	0.46
1:P:187:ASP:OD2	1:P:273:TRP:HE3	1.99	0.46
1:A:243:LYS:HE3	1:P:288:ARG:HH22	1.81	0.45
1:G:130:VAL:HG13	1:G:168:TRP:CE3	2.50	0.45
1:M:178:ASP:CG	1:M:181:ILE:HG13	2.41	0.45
1:P:177:THR:HA	1:P:279:ASP:O	2.17	0.45
1:A:187:ASP:OD1	1:A:232:ARG:HG3	2.16	0.45
1:D:125:HIS:HA	1:D:142:ARG:O	2.16	0.45
1:M:13:ALA:CB	1:M:121:LEU:HD11	2.46	0.45
1:M:20:LEU:O	1:M:20:LEU:HD12	2.15	0.45
1:P:238:TRP:CE2	1:P:363:ALA:HA	2.51	0.45
1:A:77:PRO:CB	1:A:89:ARG:HD3	2.46	0.45
1:J:114:ALA:O	1:J:119:VAL:HG23	2.17	0.45
1:A:204:LEU:HB3	1:A:205:PRO:HD2	1.97	0.45
1:J:235:VAL:CG2	1:J:261:VAL:HG21	2.46	0.45

Continued on next page...

Continued from previous page...

Atom-1	Atom-2	Interatomic distance (Å)	Clash overlap (Å)
1:J:257:ALA:O	1:J:261:VAL:HG23	2.16	0.45
1:M:22:CYS:HB3	1:M:117:LEU:CD1	2.47	0.45
1:P:235:VAL:O	1:P:235:VAL:HG13	2.16	0.45
1:A:8:VAL:CG2	1:A:328:LEU:HD11	2.47	0.45
1:A:182:LEU:HD11	1:A:276:ARG:CD	2.42	0.45
1:D:183:THR:HG23	1:D:236:THR:OG1	2.17	0.45
1:G:13:ALA:HB3	1:G:35:GLU:OE1	2.16	0.45
1:G:81:PHE:CE1	1:G:358:GLN:HB2	2.51	0.45
1:J:101:ILE:HG13	1:J:102:PRO:HD2	1.98	0.45
1:J:273:TRP:CZ3	1:J:275:THR:HB	2.51	0.45
1:D:125:HIS:HB3	1:D:141:VAL:HG11	1.99	0.45
1:D:295:VAL:HG12	1:D:296:GLY:N	2.32	0.45
1:G:238:TRP:CD2	1:G:364:PRO:HD3	2.52	0.45
1:M:408:HIS:CE1	1:M:410:LEU:HG	2.51	0.45
1:G:155:LEU:C	1:G:155:LEU:HD23	2.42	0.45
1:G:390:ASN:HA	1:G:395:MET:HE2	1.98	0.45
1:P:232:ARG:O	1:P:233:LEU:HD23	2.16	0.45
1:P:411:VAL:CG2	1:P:487:TRP:HA	2.45	0.45
1:A:264:THR:HG23	1:A:264:THR:O	2.17	0.45
1:D:191:PRO:HD2	1:D:267:PRO:HG2	1.99	0.45
1:G:185:LEU:O	1:G:274:VAL:HA	2.17	0.45
1:J:160:GLY:O	1:J:163:SER:HB2	2.17	0.45
1:M:415:PHE:HB3	1:M:483:GLY:O	2.17	0.45
1:P:408:HIS:ND1	1:P:409:PRO:HD2	2.31	0.45
1:A:173:PHE:CZ	1:A:301:VAL:HG13	2.52	0.45
1:A:180:HIS:HA	1:A:240:ALA:O	2.16	0.45
1:D:324:LEU:HA	1:D:337:LEU:HD21	1.99	0.45
1:G:199:THR:HB	1:G:201:GLU:HG3	1.98	0.45
1:J:63:LEU:C	1:J:63:LEU:HD23	2.42	0.45
1:J:350:ARG:HD3	1:J:391:LEU:HD12	1.97	0.45
1:M:408:HIS:HE1	1:M:410:LEU:HG	1.82	0.45
1:A:56:VAL:HA	1:A:59:PHE:CE2	2.52	0.45
1:A:283:LEU:HD12	1:A:299:ALA:O	2.17	0.45
1:D:184:TYR:CE1	1:D:276:ARG:HD3	2.50	0.45
1:D:492:ALA:H	1:D:493:PRO:HD2	1.81	0.45
1:G:452:GLU:OE1	1:G:498:LEU:HD23	2.17	0.45
1:M:56:VAL:CG2	1:M:414:TRP:HH2	2.30	0.45
1:M:133:ASP:C	1:M:135:ASP:H	2.24	0.45
1:P:130:VAL:HG22	1:P:168:TRP:HB3	1.99	0.45
1:P:309:GLY:HA3	2:P:601:FAD:H1'2	1.98	0.45
1:P:411:VAL:HA	1:P:485:VAL:HG12	1.99	0.45

Continued on next page...

Continued from previous page...

Atom-1	Atom-2	Interatomic distance (Å)	Clash overlap (Å)
1:P:416:PRO:HB2	1:P:473:PRO:HG2	1.98	0.45
1:P:419:GLU:O	1:P:468:ALA:HB3	2.16	0.45
1:A:442:ASP:OD2	1:A:447:GLY:HA2	2.17	0.44
1:G:70:ALA:HB2	1:G:101:ILE:HB	1.99	0.44
1:D:401:PHE:HB3	1:D:402:PRO:CD	2.47	0.44
1:M:22:CYS:HB3	1:M:117:LEU:HD12	1.99	0.44
1:A:102:PRO:HB2	1:A:104:TRP:CD1	2.53	0.44
1:G:9:VAL:HG23	1:G:152:THR:CB	2.45	0.44
1:G:375:PHE:O	1:G:379:LEU:HG	2.17	0.44
1:J:2:LEU:CD2	1:J:3:PRO:HD2	2.47	0.44
1:P:104:TRP:NE1	1:P:105:LYS:HG3	2.33	0.44
1:A:214:LEU:HA	1:A:222:PHE:O	2.17	0.44
1:G:350:ARG:O	1:G:353:MET:HB3	2.17	0.44
1:M:81:PHE:CD1	1:M:392:PHE:HE2	2.34	0.44
1:A:238:TRP:CE3	1:A:364:PRO:HD3	2.53	0.44
1:A:442:ASP:OD2	1:A:449:ALA:HB3	2.18	0.44
1:D:308:PRO:O	1:D:312:LEU:HB2	2.17	0.44
1:J:8:VAL:CG2	1:J:324:LEU:HD21	2.48	0.44
1:P:161:GLY:N	1:P:297:ASP:HB3	2.32	0.44
1:A:354:HIS:C	1:A:354:HIS:CD2	2.96	0.44
1:D:214:LEU:H	1:D:214:LEU:CD1	2.30	0.44
1:D:398:ARG:HG3	1:D:412:GLY:O	2.18	0.44
1:G:257:ALA:O	1:G:261:VAL:HG22	2.18	0.44
1:J:487:TRP:HB2	1:J:501:ALA:CB	2.47	0.44
1:M:202:LEU:O	1:M:209:ARG:HA	2.18	0.44
1:P:415:PHE:CB	1:P:479:ILE:HD13	2.46	0.44
1:A:439:LEU:HD11	1:A:463:VAL:HG11	2.00	0.44
1:G:86:LEU:HD13	1:G:385:LEU:CD1	2.47	0.44
1:G:89:ARG:HG2	1:M:445:GLU:O	2.18	0.44
1:G:418:PHE:O	1:G:429:VAL:HG23	2.18	0.44
1:A:81:PHE:CZ	1:A:358:GLN:HG2	2.53	0.44
1:A:226:ARG:HB3	1:A:231:HIS:CE1	2.53	0.44
1:A:251:LEU:CD2	1:A:271:PRO:HB3	2.17	0.44
1:D:52:ARG:O	1:D:56:VAL:HG23	2.18	0.44
1:G:88:LEU:HD13	1:G:94:ILE:HG23	2.00	0.44
1:M:221:MET:O	1:M:235:VAL:HA	2.17	0.44
1:P:379:LEU:CD2	1:P:384:THR:HG22	2.27	0.44
1:A:158:CYS:O	2:A:601:FAD:H52A	2.17	0.44
1:D:56:VAL:HG22	1:D:414:TRP:HH2	1.83	0.44
1:G:121:LEU:HD21	1:G:123:ARG:HH11	1.83	0.44
1:J:313:GLY:O	1:J:316:ASP:HB2	2.18	0.44

Continued on next page...

Continued from previous page...

Atom-1	Atom-2	Interatomic distance (Å)	Clash overlap (Å)
1:M:13:ALA:HB2	1:M:121:LEU:HD11	2.00	0.44
1:M:432:LEU:HD13	1:M:463:VAL:HG11	2.00	0.44
1:P:182:LEU:C	1:P:182:LEU:HD12	2.43	0.44
1:P:183:THR:HG22	1:P:184:TYR:N	2.32	0.44
1:A:202:LEU:O	1:A:210:VAL:HG11	2.17	0.43
1:A:239:ASP:OD1	1:A:239:ASP:N	2.51	0.43
1:G:156:VAL:HG23	1:G:156:VAL:O	2.18	0.43
1:G:453:ALA:HA	1:G:456:TRP:CE3	2.53	0.43
1:M:56:VAL:HG22	1:M:414:TRP:HH2	1.84	0.43
1:P:181:ILE:HG13	1:P:238:TRP:HA	2.00	0.43
1:A:331:TRP:HB3	1:A:459:ARG:HH11	1.83	0.43
1:D:442:ASP:CG	1:D:449:ALA:HB3	2.43	0.43
1:J:159:ASP:OD1	1:J:159:ASP:N	2.46	0.43
1:P:287:TYR:HB2	1:P:341:GLN:HB2	1.99	0.43
1:P:315:GLN:HA	1:P:318:VAL:HG12	1.99	0.43
1:A:11:VAL:HG22	1:A:127:VAL:HG21	1.98	0.43
1:D:80:GLU:HG3	1:D:84:MET:O	2.18	0.43
1:G:59:PHE:HE1	1:G:60:ARG:CZ	2.31	0.43
1:G:256:GLN:HB3	1:G:260:ARG:CZ	2.48	0.43
1:G:443:LEU:HA	1:G:465:ALA:O	2.18	0.43
1:P:295:VAL:HG22	1:P:340:TYR:OH	2.18	0.43
1:D:130:VAL:HG12	1:D:139:VAL:HG13	2.01	0.43
1:D:455:PRO:HB2	1:D:509:GLU:HB2	2.01	0.43
1:J:139:VAL:O	1:J:149:ARG:HA	2.19	0.43
1:J:307:GLY:N	1:J:308:PRO:HD3	2.33	0.43
1:M:183:THR:CG2	1:M:236:THR:HG22	2.48	0.43
1:P:29:ILE:HG13	1:P:328:LEU:HD12	1.99	0.43
1:A:171:ILE:HD11	1:A:289:ARG:HB2	2.00	0.43
1:D:361:LEU:N	1:D:361:LEU:HD22	2.32	0.43
1:J:44:PRO:HG2	1:J:273:TRP:NE1	2.34	0.43
1:M:113:ARG:CZ	1:M:117:LEU:HD21	2.48	0.43
1:M:249:ALA:CB	1:M:274:VAL:HG23	2.47	0.43
1:P:25:ARG:HD2	1:P:25:ARG:HA	1.83	0.43
1:P:441:LEU:O	1:P:476:ALA:HA	2.19	0.43
1:D:313:GLY:O	1:D:316:ASP:HB2	2.19	0.43
1:G:60:ARG:CZ	1:G:436:GLY:HA2	2.48	0.43
1:G:171:ILE:HG21	1:G:286:ASP:O	2.19	0.43
1:J:66:PHE:HE2	1:J:106:ILE:HG23	1.83	0.43
1:M:57:LEU:HD13	1:M:66:PHE:CD2	2.53	0.43
1:M:303:SER:O	1:M:304:SER:CB	2.66	0.43
1:P:305:THR:HG23	1:P:305:THR:O	2.17	0.43

Continued on next page...

Continued from previous page...

Atom-1	Atom-2	Interatomic distance (Å)	Clash overlap (Å)
1:A:20:LEU:CD2	1:A:156:VAL:HG11	2.48	0.43
1:D:217:THR:HG21	1:D:261:VAL:O	2.18	0.43
1:D:408:HIS:C	1:D:410:LEU:H	2.26	0.43
1:G:54:ILE:HD12	1:G:97:ARG:C	2.43	0.43
1:J:183:THR:HB	1:J:277:VAL:HG23	2.01	0.43
1:P:132:GLN:CB	1:P:137:VAL:HG22	2.49	0.43
1:P:442:ASP:C	1:P:444:GLY:H	2.25	0.43
1:D:297:ASP:OD2	2:D:601:FAD:O3'	2.37	0.43
1:G:440:LEU:HD11	1:G:498:LEU:HD11	2.01	0.43
1:M:365:GLY:N	1:M:366:PRO:CD	2.82	0.43
1:P:166:ARG:HG3	1:P:294:LEU:CD1	2.48	0.43
1:P:408:HIS:CE1	1:P:488:ALA:HB3	2.54	0.43
1:A:289:ARG:HD3	1:A:289:ARG:HA	1.84	0.43
1:D:202:LEU:HG	1:D:224:GLN:OE1	2.19	0.43
1:G:12:GLY:HA2	2:G:601:FAD:O4B	2.18	0.43
1:G:333:THR:OG1	1:G:335:ARG:HG2	2.19	0.43
1:D:11:VAL:HG23	1:D:155:LEU:HD11	2.01	0.42
1:G:183:THR:HB	1:G:277:VAL:HG23	2.01	0.42
1:J:189:VAL:HG22	1:J:269:SER:O	2.19	0.42
1:M:102:PRO:HB2	1:M:104:TRP:CD1	2.54	0.42
1:M:393:GLY:HA3	1:M:395:MET:CE	2.41	0.42
1:P:9:VAL:HG23	1:P:152:THR:HB	2.01	0.42
1:A:83:GLY:HA2	1:A:214:LEU:HD12	2.00	0.42
1:D:457:LYS:HE2	1:D:457:LYS:HB3	1.88	0.42
1:G:130:VAL:HG22	1:G:168:TRP:CB	2.49	0.42
1:G:140:HIS:NE2	1:G:147:GLU:HB3	2.34	0.42
1:G:289:ARG:HD3	1:G:289:ARG:HA	1.90	0.42
1:P:25:ARG:NH1	1:P:30:ARG:HG3	2.33	0.42
1:P:492:ALA:HB1	1:P:493:PRO:HA	2.01	0.42
1:A:219:ARG:HD2	1:A:260:ARG:O	2.19	0.42
1:D:73:ALA:HB2	1:D:99:MET:HG3	2.01	0.42
1:M:316:ASP:O	1:M:340:TYR:HE1	2.02	0.42
1:P:130:VAL:CG2	1:P:168:TRP:HB3	2.49	0.42
1:P:175:GLY:HA3	1:P:281:THR:O	2.19	0.42
1:A:66:PHE:HB3	1:A:99:MET:SD	2.60	0.42
1:A:183:THR:HG23	1:A:236:THR:OG1	2.19	0.42
1:A:324:LEU:HD12	1:A:324:LEU:HA	1.88	0.42
1:D:15:PRO:HG2	1:D:103:GLN:NE2	2.29	0.42
1:D:305:THR:HG23	1:D:305:THR:O	2.19	0.42
1:J:46:ALA:HA	2:J:601:FAD:C4X	2.48	0.42
1:M:185:LEU:HD13	1:M:277:VAL:CG2	2.50	0.42

Continued on next page...

Continued from previous page...

Atom-1	Atom-2	Interatomic distance (Å)	Clash overlap (Å)
1:M:248:PRO:O	1:M:249:ALA:HB3	2.20	0.42
1:M:475:THR:HG22	1:M:489:ALA:O	2.19	0.42
1:M:219:ARG:HB2	1:M:261:VAL:HA	2.02	0.42
1:P:287:TYR:H	1:P:341:GLN:CD	2.27	0.42
1:P:411:VAL:HA	1:P:485:VAL:CG1	2.50	0.42
1:D:113:ARG:O	1:D:117:LEU:HG	2.20	0.42
1:G:8:VAL:HG13	1:G:31:PRO:HA	2.02	0.42
1:G:24:LEU:HD23	1:G:24:LEU:HA	1.89	0.42
1:J:60:ARG:HD3	1:J:60:ARG:HA	1.78	0.42
1:J:439:LEU:O	1:J:478:LEU:HD12	2.19	0.42
1:M:408:HIS:ND1	1:M:409:PRO:HD2	2.35	0.42
1:P:132:GLN:HB3	1:P:137:VAL:HG22	2.02	0.42
1:A:127:VAL:HG22	1:A:141:VAL:HG22	2.02	0.42
1:A:182:LEU:HD11	1:A:276:ARG:CG	2.50	0.42
1:D:188:ALA:CB	1:D:268:LEU:HD22	2.49	0.42
1:G:44:PRO:HB2	1:G:232:ARG:HH22	1.85	0.42
1:G:84:MET:HB3	1:G:376:LEU:HD21	2.02	0.42
1:G:348:ALA:O	1:G:352:LEU:HD13	2.20	0.42
1:J:132:GLN:CB	1:J:137:VAL:HG22	2.49	0.42
1:A:191:PRO:HD3	1:A:267:PRO:CB	2.49	0.42
1:A:462:ILE:O	1:A:462:ILE:HG13	2.20	0.42
1:D:188:ALA:HB1	1:D:268:LEU:HD22	2.01	0.42
1:G:49:ILE:HD11	1:G:53:ILE:HG12	2.02	0.42
1:G:133:ASP:OD2	1:G:138:HIS:NE2	2.53	0.42
1:J:183:THR:HG23	1:J:235:VAL:O	2.19	0.42
1:J:442:ASP:O	1:J:464:THR:HG23	2.20	0.42
1:M:395:MET:HE3	1:M:395:MET:HB2	1.95	0.42
1:J:182:LEU:CD2	1:J:245:THR:HG21	2.50	0.42
1:P:6:ALA:O	1:P:152:THR:HA	2.19	0.42
1:P:222:PHE:CZ	1:P:233:LEU:HD22	2.55	0.42
1:A:9:VAL:HG23	1:A:152:THR:HB	2.02	0.42
1:A:269:SER:O	1:A:270:SER:C	2.63	0.42
1:D:35:GLU:HB3	1:D:123:ARG:HD2	2.02	0.42
1:D:492:ALA:N	1:D:493:PRO:HD2	2.35	0.42
1:G:33:VAL:HB	1:G:121:LEU:HA	2.01	0.42
1:G:52:ARG:CZ	1:G:395:MET:HA	2.49	0.42
1:J:339:THR:O	1:J:343:GLU:HG3	2.20	0.42
1:M:201:GLU:HG2	1:M:211:ARG:HA	2.00	0.42
1:M:324:LEU:O	1:M:328:LEU:HG	2.19	0.42
1:P:164:ARG:HD3	2:P:601:FAD:H61A	1.84	0.42
1:P:254:LEU:HD12	1:P:255:GLY:N	2.35	0.42

Continued on next page...

Continued from previous page...

Atom-1	Atom-2	Interatomic distance (Å)	Clash overlap (Å)
1:A:35:GLU:HG3	1:A:37:MET:O	2.20	0.41
1:D:81:PHE:CE2	1:D:358:GLN:HG2	2.54	0.41
1:P:142:ARG:HB2	1:P:147:GLU:HG2	2.01	0.41
1:A:442:ASP:CG	1:A:449:ALA:HB3	2.45	0.41
1:D:15:PRO:CG	1:D:103:GLN:HE21	2.28	0.41
1:D:391:LEU:HA	1:D:396:ASP:OD1	2.20	0.41
1:D:415:PHE:CB	1:D:479:ILE:HD13	2.46	0.41
1:G:36:ARG:HD3	1:G:126:GLU:CD	2.45	0.41
1:G:43:PRO:HA	1:G:44:PRO:HD3	1.89	0.41
1:G:184:TYR:CE1	1:G:276:ARG:HG2	2.55	0.41
1:J:114:ALA:HB1	1:J:119:VAL:HG21	2.02	0.41
1:M:183:THR:HG22	1:M:236:THR:CB	2.51	0.41
1:A:125:HIS:HB3	1:A:141:VAL:HG11	2.01	0.41
1:D:441:LEU:HG	1:D:443:LEU:HD21	2.02	0.41
1:G:56:VAL:HA	1:G:59:PHE:CD2	2.53	0.41
1:J:166:ARG:HG3	1:J:171:ILE:HB	2.02	0.41
1:M:393:GLY:CA	1:M:395:MET:HE2	2.40	0.41
1:P:442:ASP:OD2	1:P:450:ALA:HB2	2.20	0.41
1:A:171:ILE:HD13	1:A:289:ARG:CZ	2.50	0.41
1:A:441:LEU:HD12	1:A:441:LEU:HA	1.94	0.41
1:G:9:VAL:O	1:G:155:LEU:HA	2.19	0.41
1:G:82:SER:C	1:G:362:LEU:HD11	2.45	0.41
1:J:415:PHE:HA	1:J:485:VAL:CG2	2.51	0.41
1:D:102:PRO:O	1:D:106:ILE:HG13	2.20	0.41
1:J:487:TRP:CZ3	1:J:498:LEU:HD22	2.56	0.41
1:M:171:ILE:HG21	1:M:286:ASP:O	2.20	0.41
1:P:293:LEU:N	1:P:293:LEU:HD12	2.35	0.41
1:P:453:ALA:HB2	1:P:502:LEU:HD11	2.03	0.41
1:A:226:ARG:HH21	1:A:229:GLY:CA	2.34	0.41
1:A:226:ARG:HB3	1:A:231:HIS:ND1	2.36	0.41
1:A:399:TYR:HB2	1:A:401:PHE:CE1	2.56	0.41
1:D:164:ARG:HG2	1:D:168:TRP:CE2	2.55	0.41
1:D:202:LEU:HD12	1:D:202:LEU:HA	1.78	0.41
1:D:377:GLU:HA	1:D:380:GLU:HG2	2.01	0.41
1:P:52:ARG:O	1:P:52:ARG:HG3	2.20	0.41
1:P:455:PRO:HB2	1:P:509:GLU:HG3	2.01	0.41
1:A:121:LEU:HD21	1:A:123:ARG:NE	2.35	0.41
1:G:13:ALA:H	2:G:601:FAD:H4B	1.86	0.41
1:G:310:LEU:HD23	2:G:601:FAD:H4'	2.02	0.41
1:G:408:HIS:CG	1:G:409:PRO:HD2	2.55	0.41
1:J:102:PRO:HD2	1:J:105:LYS:HD2	2.03	0.41

Continued on next page...

Continued from previous page...

Atom-1	Atom-2	Interatomic distance (Å)	Clash overlap (Å)
1:J:257:ALA:HA	1:J:260:ARG:CZ	2.51	0.41
1:J:352:LEU:HA	1:J:355:THR:OG1	2.21	0.41
1:M:450:ALA:HA	1:M:462:ILE:HG21	2.02	0.41
1:D:125:HIS:HB3	1:D:141:VAL:CG1	2.51	0.41
1:G:221:MET:HG2	1:G:222:PHE:N	2.36	0.41
1:J:398:ARG:NH2	1:J:413:GLY:HA3	2.36	0.41
1:J:487:TRP:CZ2	1:J:498:LEU:HB2	2.55	0.41
1:M:128:LEU:O	1:M:129:ALA:HB2	2.20	0.41
1:M:164:ARG:HA	1:M:167:LYS:HD2	2.03	0.41
1:P:305:THR:C	1:P:307:GLY:H	2.28	0.41
1:P:344:ARG:HD2	1:P:344:ARG:HA	1.88	0.41
1:A:101:ILE:HG23	1:A:106:ILE:HG12	2.02	0.41
1:A:159:ASP:O	2:A:601:FAD:C8A	2.69	0.41
1:A:159:ASP:O	2:A:601:FAD:H8A	2.20	0.41
1:A:377:GLU:O	1:A:380:GLU:HB2	2.20	0.41
1:D:75:ARG:HG3	1:D:97:ARG:HG3	2.03	0.41
1:D:291:ARG:HH11	1:D:291:ARG:HG2	1.86	0.41
1:G:130:VAL:HG22	1:G:168:TRP:CE3	2.55	0.41
1:J:59:PHE:HE1	1:J:60:ARG:HH21	1.68	0.41
1:J:187:ASP:CG	1:J:273:TRP:HD1	2.28	0.41
1:J:389:VAL:HG12	1:J:395:MET:HE1	2.02	0.41
1:M:33:VAL:HB	1:M:121:LEU:HD12	2.01	0.41
1:M:75:ARG:HD3	1:M:94:ILE:O	2.21	0.41
1:M:285:ASP:HA	1:M:345:ARG:NH2	2.36	0.41
1:M:354:HIS:CD2	1:M:354:HIS:N	2.89	0.41
1:A:49:ILE:HG13	1:A:54:ILE:HD11	2.02	0.41
1:A:511:ARG:HA	1:A:511:ARG:HD3	1.75	0.41
1:G:492:ALA:N	1:G:493:PRO:CD	2.84	0.41
1:G:505:TRP:CE3	1:G:505:TRP:HA	2.56	0.41
1:A:297:ASP:HB2	2:A:601:FAD:H5'2	2.03	0.40
1:D:4:ALA:HB1	1:D:151:THR:O	2.20	0.40
1:J:81:PHE:CG	1:J:388:PHE:HZ	2.39	0.40
1:J:129:ALA:HA	1:J:168:TRP:CZ2	2.55	0.40
1:M:131:ASP:OD1	1:M:138:HIS:HB2	2.20	0.40
1:P:171:ILE:HD12	1:P:294:LEU:HD11	2.02	0.40
1:P:320:LEU:HD13	1:P:340:TYR:CD2	2.56	0.40
1:D:9:VAL:O	1:D:155:LEU:HD12	2.22	0.40
1:D:182:LEU:HD13	1:D:278:LEU:HD23	2.03	0.40
1:D:204:LEU:HB2	1:D:210:VAL:HG23	2.03	0.40
1:D:224:GLN:HG3	1:D:233:LEU:HD22	2.03	0.40
1:D:379:LEU:HD23	1:D:384:THR:HG22	2.03	0.40

Continued on next page...

Continued from previous page...

Atom-1	Atom-2	Interatomic distance (Å)	Clash overlap (Å)
1:J:76:LEU:O	1:J:94:ILE:HD13	2.22	0.40
1:J:503:THR:HG23	1:J:508:ALA:HA	2.02	0.40
1:M:8:VAL:HG13	1:M:31:PRO:CB	2.48	0.40
1:M:350:ARG:HH12	1:M:397:VAL:HA	1.86	0.40
1:P:339:THR:O	1:P:343:GLU:HG3	2.20	0.40
1:D:108:ARG:HD3	1:M:118:ASP:OD1	2.21	0.40
1:G:225:VAL:C	1:G:231:HIS:HA	2.47	0.40
1:J:26:LEU:HD22	1:J:117:LEU:HD22	2.02	0.40
1:J:254:LEU:O	1:J:258:ILE:HG13	2.22	0.40
1:P:63:LEU:HD11	1:P:99:MET:HE3	2.03	0.40
1:D:505:TRP:CE3	1:D:505:TRP:HA	2.56	0.40
2:J:601:FAD:H9	2:J:601:FAD:H1'1	1.95	0.40
1:M:133:ASP:C	1:M:135:ASP:N	2.80	0.40
1:M:176:HIS:CE1	1:M:178:ASP:HA	2.56	0.40
1:M:478:LEU:HD23	1:M:501:ALA:CB	2.51	0.40
1:D:204:LEU:HD12	1:D:210:VAL:HG21	2.03	0.40
1:D:295:VAL:HG22	1:D:340:TYR:OH	2.21	0.40
1:D:345:ARG:HB3	1:D:346:PRO:HD3	2.04	0.40
1:G:177:THR:HA	1:G:279:ASP:O	2.22	0.40
1:G:401:PHE:CE2	1:G:412:GLY:HA2	2.56	0.40
1:J:114:ALA:HB1	1:J:119:VAL:CG2	2.52	0.40
1:M:475:THR:HG21	1:M:491:ALA:N	2.37	0.40
1:P:29:ILE:HD12	1:P:328:LEU:HD13	2.02	0.40
1:P:399:TYR:HB2	1:P:401:PHE:CE1	2.53	0.40

There are no symmetry-related clashes.

5.3 Torsion angles [i](#)

5.3.1 Protein backbone [i](#)

In the following table, the Percentiles column shows the percent Ramachandran outliers of the chain as a percentile score with respect to all X-ray entries followed by that with respect to entries of similar resolution.

The Analysed column shows the number of residues for which the backbone conformation was analysed, and the total number of residues.

Mol	Chain	Analysed	Favoured	Allowed	Outliers	Percentiles
1	A	502/511 (98%)	463 (92%)	37 (7%)	2 (0%)	30 62

Continued on next page...

Continued from previous page...

Mol	Chain	Analysed	Favoured	Allowed	Outliers	Percentiles	
1	D	496/511 (97%)	461 (93%)	31 (6%)	4 (1%)	16	50
1	G	460/511 (90%)	430 (94%)	29 (6%)	1 (0%)	43	73
1	J	491/511 (96%)	479 (98%)	10 (2%)	2 (0%)	30	62
1	M	471/511 (92%)	427 (91%)	39 (8%)	5 (1%)	11	43
1	P	446/511 (87%)	411 (92%)	35 (8%)	0	100	100
All	All	2866/3066 (94%)	2671 (93%)	181 (6%)	14 (0%)	24	59

All (14) Ramachandran outliers are listed below:

Mol	Chain	Res	Type
1	D	470	PRO
1	M	364	PRO
1	M	366	PRO
1	G	290	GLY
1	J	470	PRO
1	M	249	ALA
1	D	307	GLY
1	M	393	GLY
1	A	270	SER
1	D	305	THR
1	J	44	PRO
1	M	206	GLY
1	A	83	GLY
1	D	77	PRO

5.3.2 Protein sidechains ⓘ

In the following table, the Percentiles column shows the percent sidechain outliers of the chain as a percentile score with respect to all X-ray entries followed by that with respect to entries of similar resolution.

The Analysed column shows the number of residues for which the sidechain conformation was analysed, and the total number of residues.

Mol	Chain	Analysed	Rotameric	Outliers	Percentiles	
1	A	394/402 (98%)	394 (100%)	0	100	100
1	D	391/402 (97%)	391 (100%)	0	100	100
1	G	364/402 (90%)	364 (100%)	0	100	100
1	J	389/402 (97%)	389 (100%)	0	100	100

Continued on next page...

Continued from previous page...

Mol	Chain	Analysed	Rotameric	Outliers	Percentiles	
1	M	367/402 (91%)	367 (100%)	0	100	100
1	P	347/402 (86%)	347 (100%)	0	100	100
All	All	2252/2412 (93%)	2252 (100%)	0	100	100

There are no protein residues with a non-rotameric sidechain to report.

Sometimes sidechains can be flipped to improve hydrogen bonding and reduce clashes. All (13) such sidechains are listed below:

Mol	Chain	Res	Type
1	A	50	ASN
1	A	111	ASN
1	A	224	GLN
1	A	315	GLN
1	A	354	HIS
1	A	434	HIS
1	D	140	HIS
1	J	302	HIS
1	J	354	HIS
1	M	176	HIS
1	M	354	HIS
1	M	430	HIS
1	P	125	HIS

5.3.3 RNA [i](#)

There are no RNA molecules in this entry.

5.4 Non-standard residues in protein, DNA, RNA chains [i](#)

There are no non-standard protein/DNA/RNA residues in this entry.

5.5 Carbohydrates [i](#)

There are no oligosaccharides in this entry.

5.6 Ligand geometry [i](#)

5 ligands are modelled in this entry.

In the following table, the Counts columns list the number of bonds (or angles) for which Mogul statistics could be retrieved, the number of bonds (or angles) that are observed in the model and the number of bonds (or angles) that are defined in the Chemical Component Dictionary. The Link column lists molecule types, if any, to which the group is linked. The Z score for a bond length (or angle) is the number of standard deviations the observed value is removed from the expected value. A bond length (or angle) with $|Z| > 2$ is considered an outlier worth inspection. RMSZ is the root-mean-square of all Z scores of the bond lengths (or angles).

Mol	Type	Chain	Res	Link	Bond lengths			Bond angles		
					Counts	RMSZ	$\# Z > 2$	Counts	RMSZ	$\# Z > 2$
2	FAD	D	601	-	56,58,58	0.79	1 (1%)	81,89,89	1.01	4 (4%)
2	FAD	G	601	-	56,58,58	0.82	1 (1%)	81,89,89	0.86	1 (1%)
2	FAD	A	601	-	56,58,58	0.80	0	81,89,89	1.18	5 (6%)
2	FAD	P	601	-	56,58,58	0.75	1 (1%)	81,89,89	0.93	4 (4%)
2	FAD	J	601	-	56,58,58	0.80	1 (1%)	81,89,89	0.77	1 (1%)

In the following table, the Chirals column lists the number of chiral outliers, the number of chiral centers analysed, the number of these observed in the model and the number defined in the Chemical Component Dictionary. Similar counts are reported in the Torsion and Rings columns. '-' means no outliers of that kind were identified.

Mol	Type	Chain	Res	Link	Chirals	Torsions	Rings
2	FAD	D	601	-	-	9/34/50/50	0/6/6/6
2	FAD	G	601	-	-	1/34/50/50	0/6/6/6
2	FAD	A	601	-	-	12/34/50/50	0/6/6/6
2	FAD	P	601	-	-	1/34/50/50	0/6/6/6
2	FAD	J	601	-	-	5/34/50/50	0/6/6/6

All (4) bond length outliers are listed below:

Mol	Chain	Res	Type	Atoms	Z	Observed(Å)	Ideal(Å)
2	J	601	FAD	C5X-N5	-2.14	1.35	1.39
2	G	601	FAD	C5X-N5	-2.14	1.35	1.39
2	D	601	FAD	C5X-N5	-2.10	1.35	1.39
2	P	601	FAD	C5X-N5	-2.10	1.35	1.39

All (15) bond angle outliers are listed below:

Mol	Chain	Res	Type	Atoms	Z	Observed(°)	Ideal(°)
2	A	601	FAD	C2B-C1B-N9A	4.84	125.56	113.30
2	D	601	FAD	C4'-C3'-C2'	-3.33	106.44	113.36
2	A	601	FAD	C5'-C4'-C3'	3.23	118.45	112.20

Continued on next page...

Continued from previous page...

Mol	Chain	Res	Type	Atoms	Z	Observed(°)	Ideal(°)
2	A	601	FAD	O4B-C4B-C5B	3.10	119.58	109.37
2	D	601	FAD	O2'-C2'-C3'	2.60	115.41	109.10
2	A	601	FAD	C4'-C3'-C2'	2.27	118.08	113.36
2	D	601	FAD	O2P-P-O1P	2.20	123.09	112.24
2	A	601	FAD	O2P-P-O1P	2.19	123.09	112.24
2	G	601	FAD	O2P-P-O1P	2.17	122.97	112.24
2	P	601	FAD	O2P-P-O1P	2.16	122.90	112.24
2	J	601	FAD	O2P-P-O1P	2.14	122.82	112.24
2	P	601	FAD	O2A-PA-O1A	2.09	122.58	112.24
2	P	601	FAD	C4'-C3'-C2'	-2.07	109.06	113.36
2	D	601	FAD	O2A-PA-O1A	2.03	122.28	112.24
2	P	601	FAD	O2'-C2'-C3'	2.01	113.98	109.10

There are no chirality outliers.

All (28) torsion outliers are listed below:

Mol	Chain	Res	Type	Atoms
2	A	601	FAD	C1'-C2'-C3'-C4'
2	A	601	FAD	O2'-C2'-C3'-C4'
2	A	601	FAD	C2'-C3'-C4'-O4'
2	A	601	FAD	C2'-C3'-C4'-C5'
2	A	601	FAD	O3'-C3'-C4'-O4'
2	A	601	FAD	O3'-C3'-C4'-C5'
2	A	601	FAD	O4'-C4'-C5'-O5'
2	D	601	FAD	N10-C1'-C2'-O2'
2	D	601	FAD	N10-C1'-C2'-C3'
2	D	601	FAD	C1'-C2'-C3'-O3'
2	D	601	FAD	C1'-C2'-C3'-C4'
2	D	601	FAD	O2'-C2'-C3'-O3'
2	D	601	FAD	O2'-C2'-C3'-C4'
2	D	601	FAD	C3'-C4'-C5'-O5'
2	D	601	FAD	O4'-C4'-C5'-O5'
2	J	601	FAD	PA-O3P-P-O5'
2	A	601	FAD	O4B-C4B-C5B-O5B
2	G	601	FAD	O4B-C4B-C5B-O5B
2	J	601	FAD	O4B-C4B-C5B-O5B
2	A	601	FAD	O2'-C2'-C3'-O3'
2	J	601	FAD	C2B-C1B-N9A-C4A
2	J	601	FAD	C2B-C1B-N9A-C8A
2	A	601	FAD	C1'-C2'-C3'-O3'
2	A	601	FAD	N10-C1'-C2'-O2'
2	D	601	FAD	O4B-C4B-C5B-O5B

Continued on next page...

Continued from previous page...

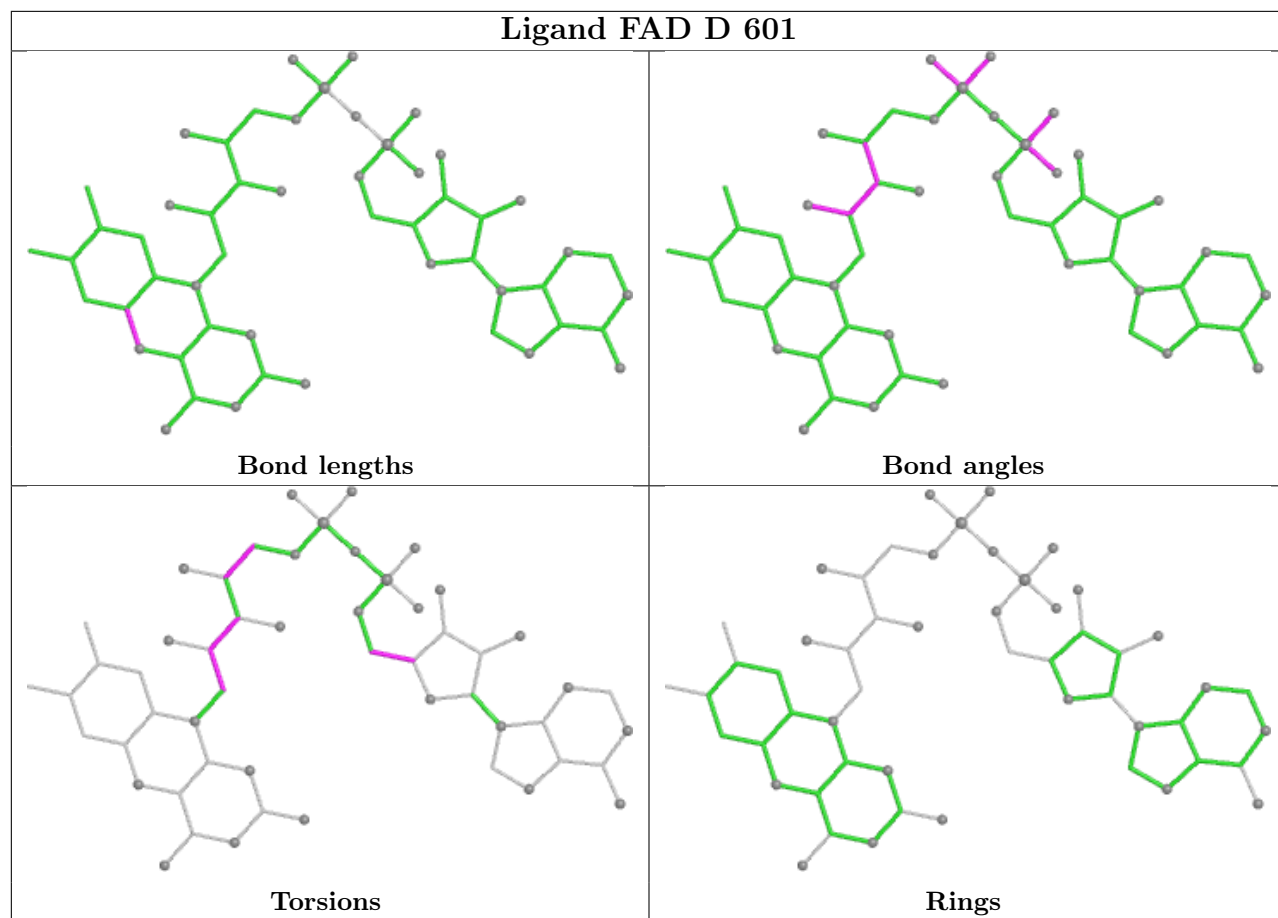
Mol	Chain	Res	Type	Atoms
2	J	601	FAD	O4B-C1B-N9A-C8A
2	P	601	FAD	O4B-C4B-C5B-O5B
2	A	601	FAD	C3'-C4'-C5'-O5'

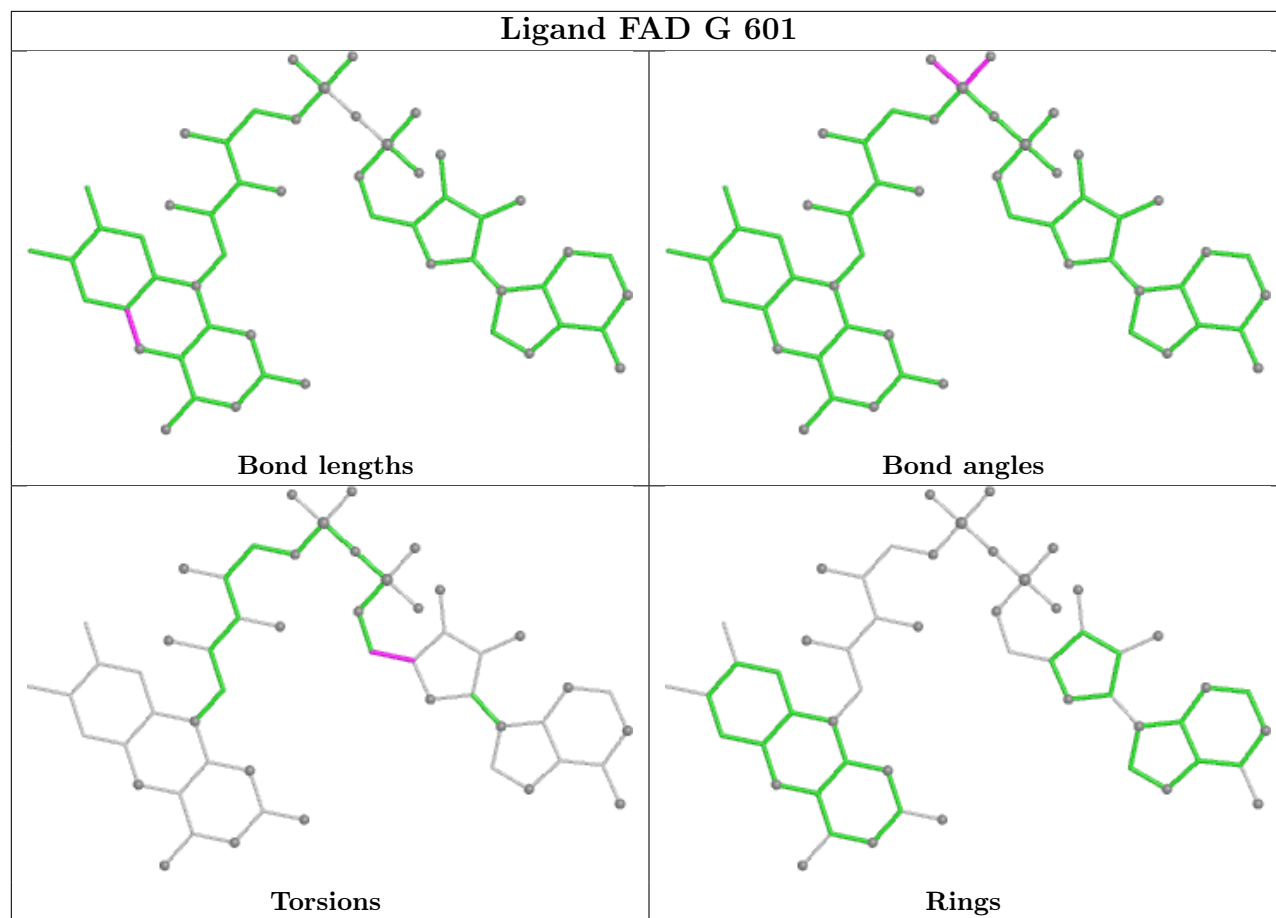
There are no ring outliers.

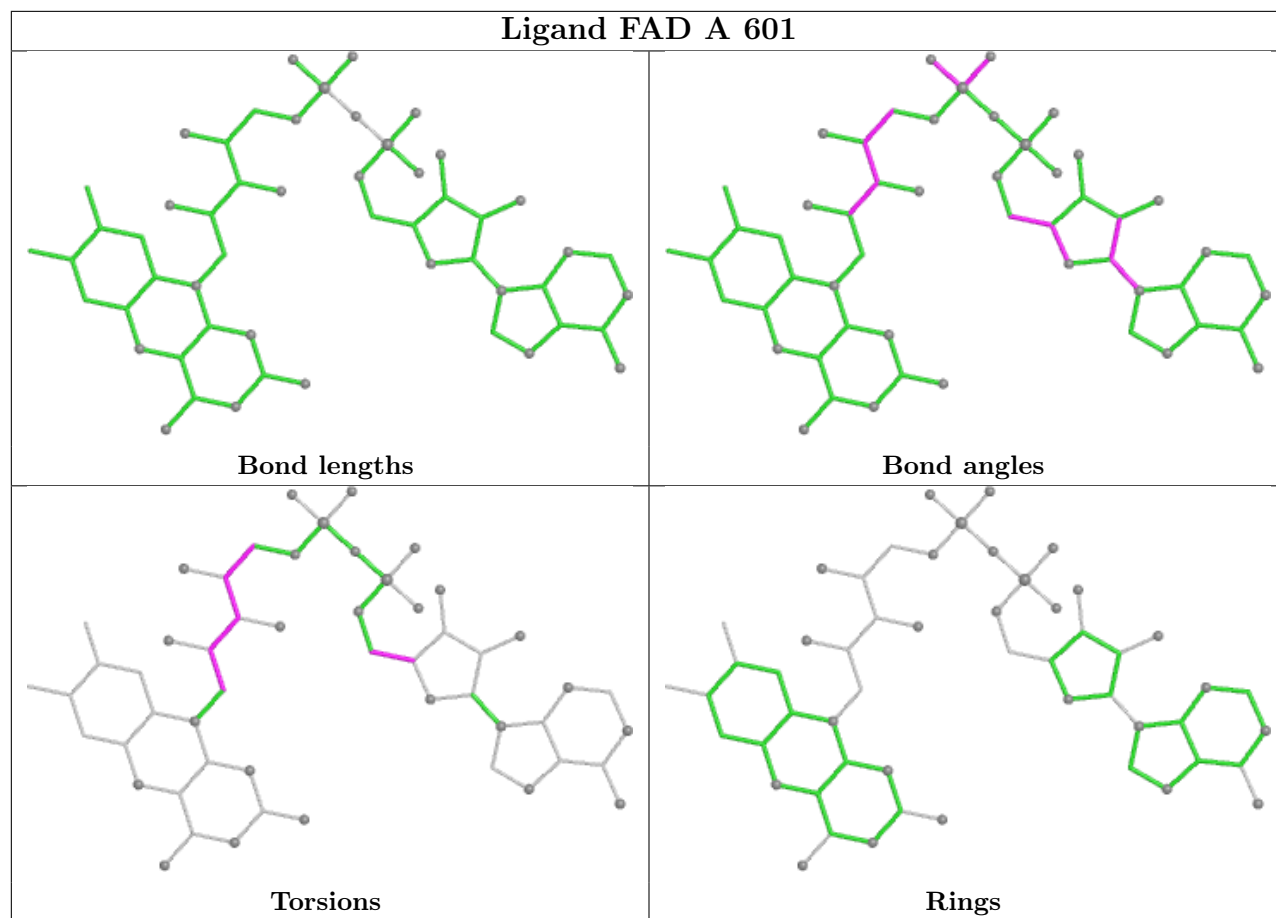
5 monomers are involved in 22 short contacts:

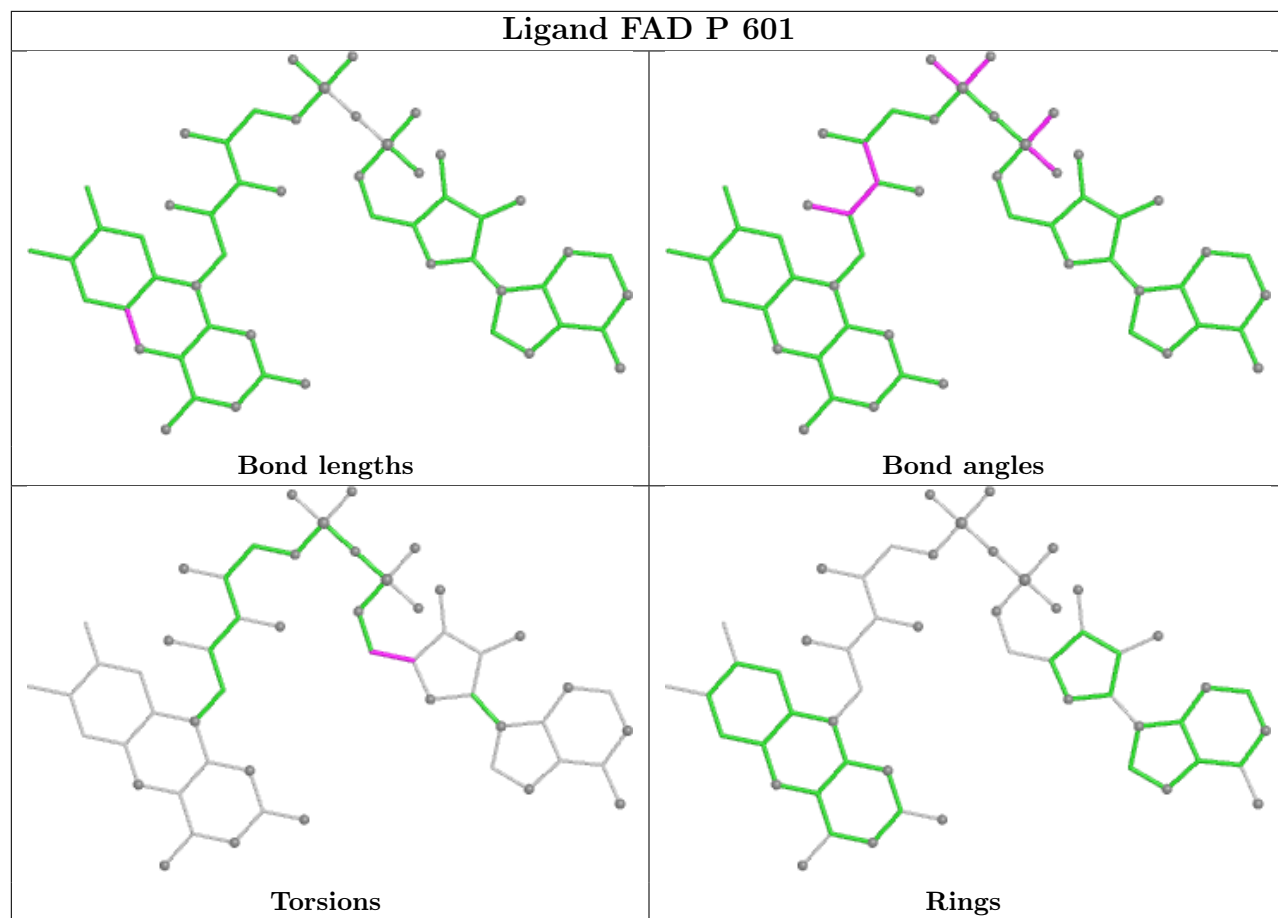
Mol	Chain	Res	Type	Clashes	Symm-Clashes
2	D	601	FAD	1	0
2	G	601	FAD	9	0
2	A	601	FAD	4	0
2	P	601	FAD	4	0
2	J	601	FAD	4	0

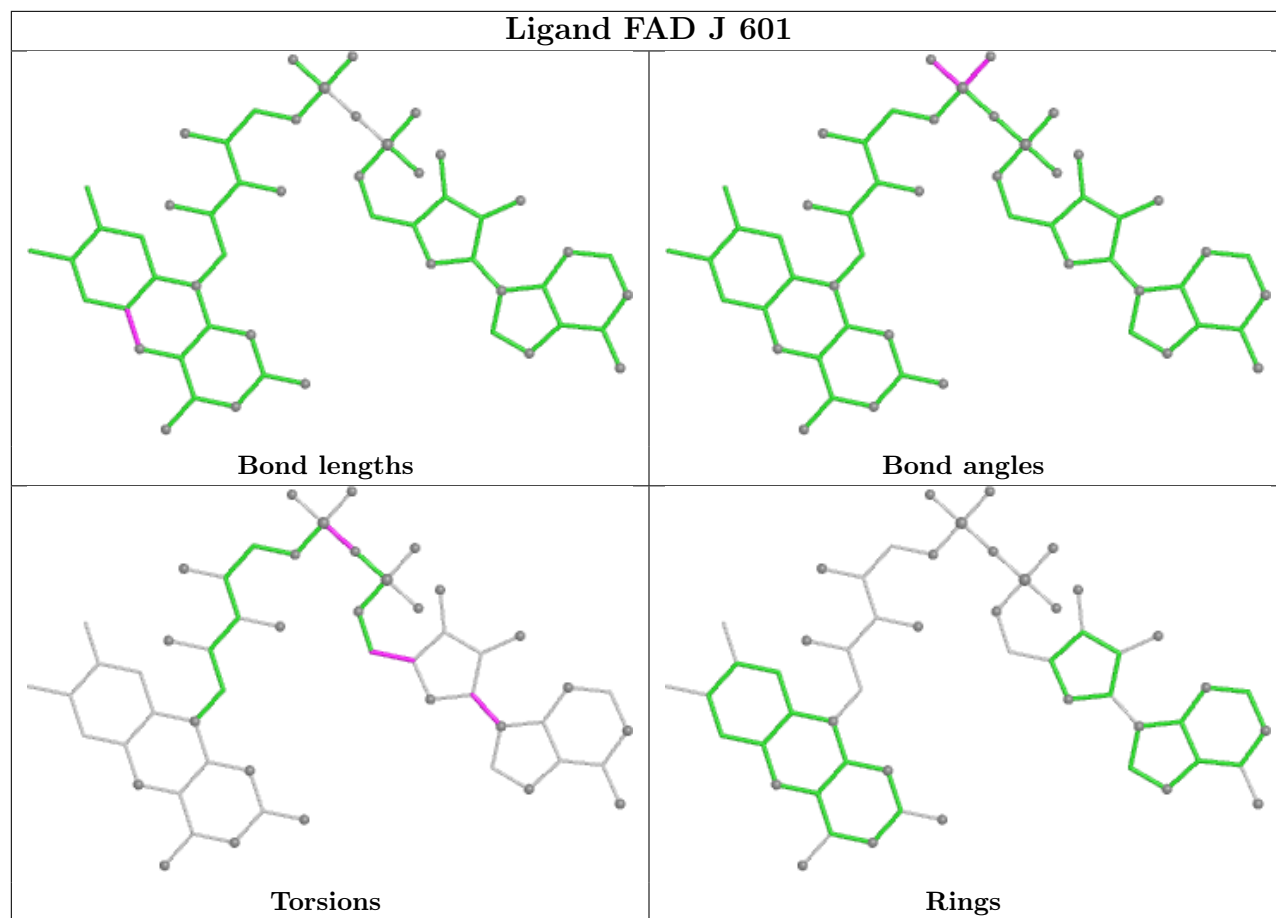
The following is a two-dimensional graphical depiction of Mogul quality analysis of bond lengths, bond angles, torsion angles, and ring geometry for all instances of the Ligand of Interest. In addition, ligands with molecular weight > 250 and outliers as shown on the validation Tables will also be included. For torsion angles, if less than 5% of the Mogul distribution of torsion angles is within 10 degrees of the torsion angle in question, then that torsion angle is considered an outlier. Any bond that is central to one or more torsion angles identified as an outlier by Mogul will be highlighted in the graph. For rings, the root-mean-square deviation (RMSD) between the ring in question and similar rings identified by Mogul is calculated over all ring torsion angles. If the average RMSD is greater than 60 degrees and the minimal RMSD between the ring in question and any Mogul-identified rings is also greater than 60 degrees, then that ring is considered an outlier. The outliers are highlighted in purple. The color gray indicates Mogul did not find sufficient equivalents in the CSD to analyse the geometry.











5.7 Other polymers [i](#)

There are no such residues in this entry.

5.8 Polymer linkage issues [i](#)

There are no chain breaks in this entry.

6 Fit of model and data

6.1 Protein, DNA and RNA chains

In the following table, the column labelled ‘#RSRZ > 2’ contains the number (and percentage) of RSRZ outliers, followed by percent RSRZ outliers for the chain as percentile scores relative to all X-ray entries and entries of similar resolution. The OWAB column contains the minimum, median, 95th percentile and maximum values of the occupancy-weighted average B-factor per residue. The column labelled ‘Q < 0.9’ lists the number of (and percentage) of residues with an average occupancy less than 0.9.

Mol	Chain	Analysed	<RSRZ>	#RSRZ>2		OWAB(Å ²)	Q<0.9
1	A	506/511 (99%)	-0.06	9 (1%)	67 48	53, 86, 129, 155	0
1	D	502/511 (98%)	0.15	28 (5%)	30 19	66, 93, 137, 162	0
1	G	474/511 (92%)	0.19	27 (5%)	29 19	64, 98, 132, 149	0
1	J	499/511 (97%)	0.03	18 (3%)	46 28	64, 92, 135, 161	0
1	M	485/511 (94%)	0.19	22 (4%)	38 24	62, 104, 142, 159	0
1	P	458/511 (89%)	0.06	14 (3%)	51 32	65, 113, 148, 159	0
All	All	2924/3066 (95%)	0.09	118 (4%)	42 26	53, 96, 140, 162	0

All (118) RSRZ outliers are listed below:

Mol	Chain	Res	Type	RSRZ
1	J	50	ASN	8.6
1	G	66	PHE	8.2
1	G	62	LEU	6.6
1	P	375	PHE	6.1
1	M	375	PHE	5.3
1	D	53	ILE	5.1
1	G	50	ASN	5.0
1	J	54	ILE	4.9
1	J	311	ASN	4.7
1	G	49	ILE	4.4
1	P	74	GLY	4.4
1	G	53	ILE	4.4
1	D	441	LEU	4.4
1	D	109	LEU	4.3
1	D	48	GLY	4.2
1	G	79	PHE	4.1
1	J	53	ILE	4.1
1	J	49	ILE	4.1
1	J	393	GLY	4.1

Continued on next page...

Continued from previous page...

Mol	Chain	Res	Type	RSRZ
1	D	78	ILE	4.1
1	D	311	ASN	4.0
1	J	392	PHE	4.0
1	P	81	PHE	4.0
1	D	392	PHE	3.8
1	D	50	ASN	3.8
1	J	81	PHE	3.7
1	M	104	TRP	3.7
1	M	388	PHE	3.7
1	P	82	SER	3.7
1	A	62	LEU	3.7
1	D	49	ILE	3.6
1	M	328	LEU	3.6
1	D	66	PHE	3.5
1	J	306	GLY	3.4
1	M	255	GLY	3.3
1	A	53	ILE	3.3
1	P	378	LEU	3.3
1	D	337	LEU	3.3
1	J	445	GLU	3.2
1	M	451	THR	3.2
1	M	245	THR	3.2
1	G	135	ASP	3.2
1	M	73	ALA	3.1
1	D	393	GLY	3.1
1	M	74	GLY	3.0
1	J	388	PHE	3.0
1	D	80	GLU	2.9
1	G	391	LEU	2.9
1	D	79	PHE	2.9
1	P	388	PHE	2.9
1	G	57	LEU	2.9
1	G	68	ALA	2.8
1	D	57	LEU	2.8
1	G	297	ASP	2.8
1	J	79	PHE	2.8
1	M	292	ILE	2.8
1	A	207	VAL	2.7
1	D	72	VAL	2.7
1	D	375	PHE	2.7
1	D	98	ARG	2.7
1	J	394	GLY	2.7

Continued on next page...

Continued from previous page...

Mol	Chain	Res	Type	RSRZ
1	D	304	SER	2.7
1	G	160	GLY	2.6
1	J	86	LEU	2.6
1	P	379	LEU	2.6
1	A	324	LEU	2.6
1	M	49	ILE	2.6
1	A	66	PHE	2.6
1	D	388	PHE	2.6
1	M	246	ASP	2.6
1	G	63	LEU	2.5
1	G	161	GLY	2.5
1	P	359	THR	2.5
1	G	96	LEU	2.4
1	M	392	PHE	2.4
1	P	462	ILE	2.4
1	G	388	PHE	2.4
1	D	324	LEU	2.4
1	P	179	GLU	2.4
1	A	392	PHE	2.4
1	G	335	ARG	2.3
1	P	233	LEU	2.3
1	D	245	THR	2.3
1	D	320	LEU	2.3
1	M	254	LEU	2.3
1	D	340	TYR	2.3
1	A	388	PHE	2.3
1	G	330	GLY	2.3
1	D	8	VAL	2.3
1	M	278	LEU	2.2
1	G	65	ARG	2.2
1	G	109	LEU	2.2
1	G	306	GLY	2.2
1	D	315	GLN	2.2
1	D	62	LEU	2.2
1	D	314	LEU	2.2
1	M	263	GLY	2.2
1	G	78	ILE	2.2
1	M	109	LEU	2.2
1	M	293	LEU	2.2
1	M	362	LEU	2.2
1	J	500	ALA	2.2
1	P	451	THR	2.2

Continued on next page...

Continued from previous page...

Mol	Chain	Res	Type	RSRZ
1	G	101	ILE	2.2
1	A	389	VAL	2.1
1	P	362	LEU	2.1
1	G	48	GLY	2.1
1	M	463	VAL	2.1
1	G	54	ILE	2.1
1	A	375	PHE	2.1
1	G	298	ALA	2.1
1	P	73	ALA	2.1
1	J	307	GLY	2.1
1	J	154	TYR	2.0
1	J	476	ALA	2.0
1	G	81	PHE	2.0
1	M	418	PHE	2.0
1	M	154	TYR	2.0

6.2 Non-standard residues in protein, DNA, RNA chains [i](#)

There are no non-standard protein/DNA/RNA residues in this entry.

6.3 Carbohydrates [i](#)

There are no oligosaccharides in this entry.

6.4 Ligands [i](#)

In the following table, the Atoms column lists the number of modelled atoms in the group and the number defined in the chemical component dictionary. The B-factors column lists the minimum, median, 95th percentile and maximum values of B factors of atoms in the group. The column labelled 'Q < 0.9' lists the number of atoms with occupancy less than 0.9.

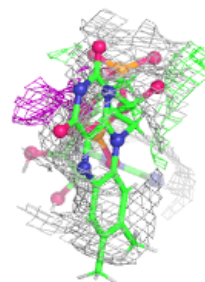
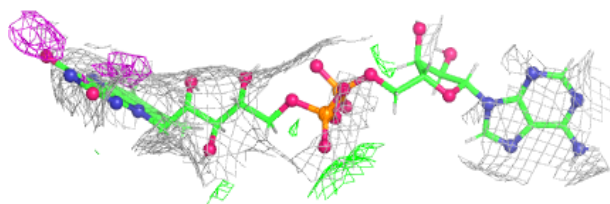
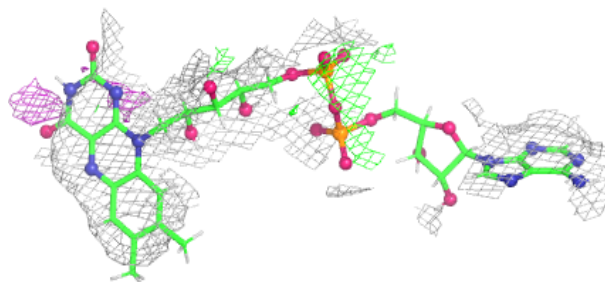
Mol	Type	Chain	Res	Atoms	RSCC	RSR	B-factors(\AA^2)	Q<0.9
2	FAD	G	601	53/53	0.81	0.12	95,118,156,167	0
2	FAD	J	601	53/53	0.84	0.10	84,105,130,154	0
2	FAD	D	601	53/53	0.86	0.09	66,93,139,150	0
2	FAD	A	601	53/53	0.87	0.10	65,105,129,136	0
2	FAD	P	601	53/53	0.88	0.09	72,119,154,167	0

The following is a graphical depiction of the model fit to experimental electron density of all instances of the Ligand of Interest. In addition, ligands with molecular weight > 250 and outliers

as shown on the geometry validation Tables will also be included. Each fit is shown from different orientation to approximate a three-dimensional view.

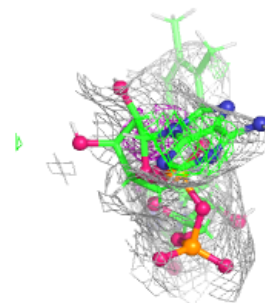
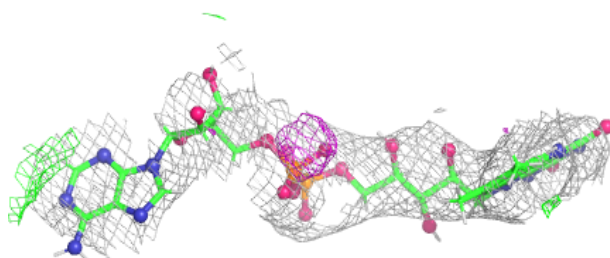
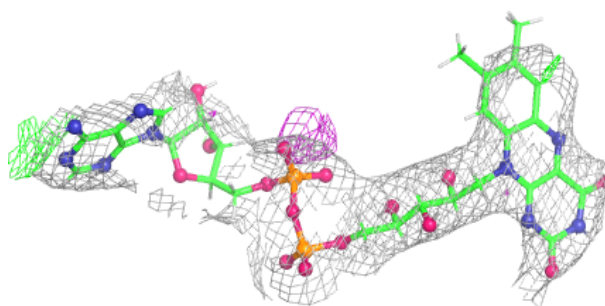
Electron density around FAD G 601:

$2mF_o-DF_c$ (at 0.7 rmsd) in gray
 mF_o-DF_c (at 3 rmsd) in purple (negative)
and green (positive)



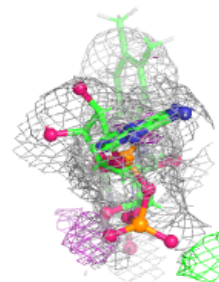
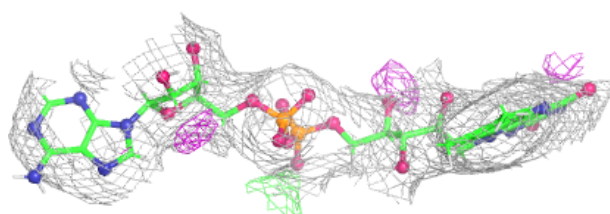
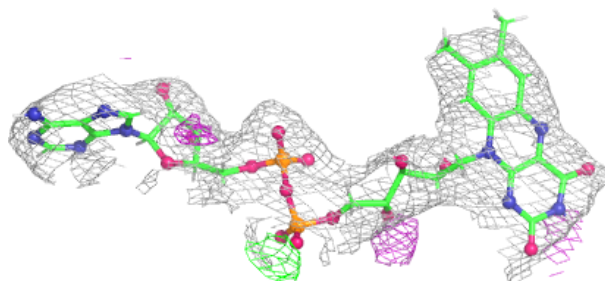
Electron density around FAD J 601:

$2mF_o-DF_c$ (at 0.7 rmsd) in gray
 mF_o-DF_c (at 3 rmsd) in purple (negative)
and green (positive)

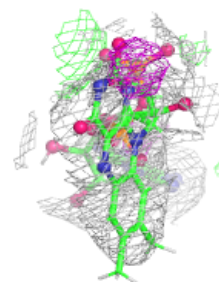
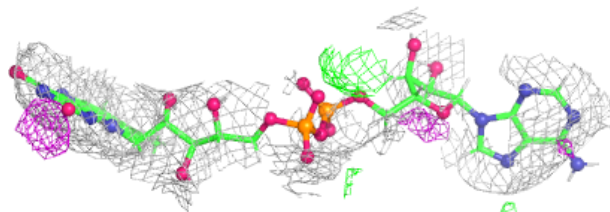
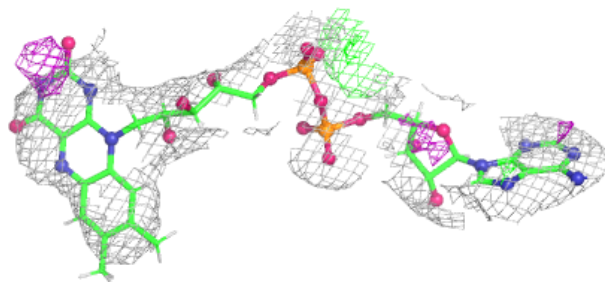


Electron density around FAD D 601:

$2mF_o-DF_c$ (at 0.7 rmsd) in gray
 mF_o-DF_c (at 3 rmsd) in purple (negative)
and green (positive)

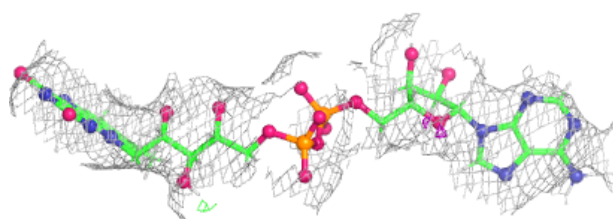
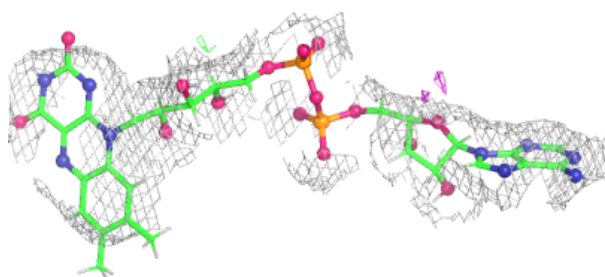
**Electron density around FAD A 601:**

$2mF_o-DF_c$ (at 0.7 rmsd) in gray
 mF_o-DF_c (at 3 rmsd) in purple (negative)
and green (positive)



Electron density around FAD P 601:

$2mF_o - DF_c$ (at 0.7 rmsd) in gray
 $mF_o - DF_c$ (at 3 rmsd) in purple (negative)
and green (positive)



6.5 Other polymers [i](#)

There are no such residues in this entry.