



Full wwPDB X-ray Structure Validation Report ⓘ

May 18, 2026 – 08:17 PM JST

PDB ID : 22HH / pdb_000022hh
Title : Beta-1,2-glucan-binding protein complex with linear beta-1,2-glucan
Authors : Nakajima, M.; Kaneko, T.
Deposited on : 2026-01-11
Resolution : 1.53 Å(reported)

This is a Full wwPDB X-ray Structure Validation Report for a publicly released PDB entry.

We welcome your comments at validation@mail.wwpdb.org

A user guide is available at

<https://www.wwpdb.org/validation/2017/XrayValidationReportHelp>

with specific help available everywhere you see the ⓘ symbol.

The types of validation reports are described at

<http://www.wwpdb.org/validation/2017/FAQs#types>.

The following versions of software and data (see [references ⓘ](#)) were used in the production of this report:

MolProbity : 4-5-2 with Phenix2.0
Mogul : 1.8.5 (274361), CSD as541be (2020)
Xtriage (Phenix) : 2.0
EDS : 3.0
Buster-report : wwPDB partial adaption of 1.1.7 (2018)
Percentile statistics : 20250101.v01 (using entries in the PDB archive January 1st 2025)
CCP4 : 9.0.010 (Gargrove)
Density-Fitness : 1.0.12
Ideal geometry (proteins) : Engh & Huber (2001)
Ideal geometry (DNA, RNA) : Parkinson et al. (1996)
Validation Pipeline (wwPDB-VP) : 2.49

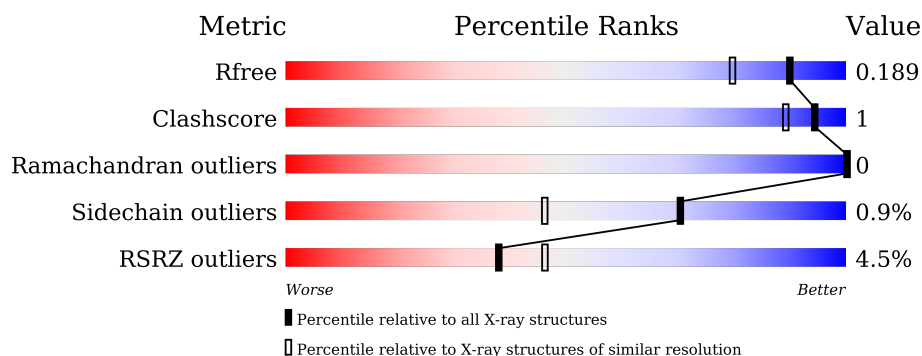
1 Overall quality at a glance

The following experimental techniques were used to determine the structure:

X-RAY DIFFRACTION

The reported resolution of this entry is 1.53 Å.

Percentile scores (ranging between 0-100) for global validation metrics of the entry are shown in the following graphic. The table shows the number of entries on which the scores are based.



Metric	Whole archive (#Entries)	Similar resolution (#Entries, resolution range(Å))
R_{free}	180053	1003 (1.54-1.54)
Clashscore	190562	1025 (1.54-1.54)
Ramachandran outliers	187476	1007 (1.54-1.54)
Sidechain outliers	187428	1007 (1.54-1.54)
RSRZ outliers	180081	1002 (1.54-1.54)

The table below summarises the geometric issues observed across the polymeric chains and their fit to the electron density. The red, orange, yellow and green segments of the lower bar indicate the fraction of residues that contain outliers for ≥ 3 , 2, 1 and 0 types of geometric quality criteria respectively. A grey segment represents the fraction of residues that are not modelled. The numeric value for each fraction is indicated below the corresponding segment, with a dot representing fractions $\leq 5\%$. The upper red bar (where present) indicates the fraction of residues that have poor fit to the electron density. The numeric value is given above the bar.

Mol	Chain	Length	Quality of chain
1	A	474	<div> <div>4%</div> <div> <div></div> <div>85%</div> <div>•</div> <div>11%</div> </div> </div>
2	C	10	<div> <div>80%</div> <div>10%</div> <div>10%</div> </div>

2 Entry composition

There are 6 unique types of molecules in this entry. The entry contains 3976 atoms, of which 0 are hydrogens and 0 are deuteriums.

In the tables below, the ZeroOcc column contains the number of atoms modelled with zero occupancy, the AltConf column contains the number of residues with at least one atom in alternate conformation and the Trace column contains the number of residues modelled with at most 2 atoms.

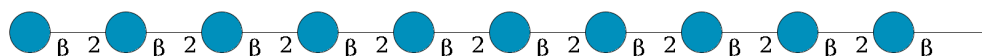
- Molecule 1 is a protein called Extracellular solute-binding protein family 1.

Mol	Chain	Residues	Atoms					ZeroOcc	AltConf	Trace
1	A	424	Total	C	N	O	S	0	9	0
			3464	2221	571	653	19			

There are 9 discrepancies between the modelled and reference sequences:

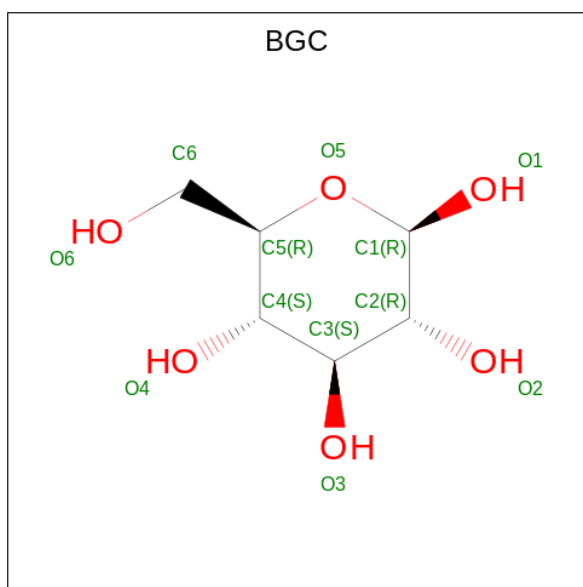
Chain	Residue	Modelled	Actual	Comment	Reference
A	21	MET	-	initiating methionine	UNP A9WCS2
A	487	LEU	-	expression tag	UNP A9WCS2
A	488	GLU	-	expression tag	UNP A9WCS2
A	489	HIS	-	expression tag	UNP A9WCS2
A	490	HIS	-	expression tag	UNP A9WCS2
A	491	HIS	-	expression tag	UNP A9WCS2
A	492	HIS	-	expression tag	UNP A9WCS2
A	493	HIS	-	expression tag	UNP A9WCS2
A	494	HIS	-	expression tag	UNP A9WCS2

- Molecule 2 is an oligosaccharide called beta-D-glucopyranose-(1-2)-beta-D-glucopyranose-(1-2)-beta-D-glucopyranose-(1-2)-beta-D-glucopyranose-(1-2)-beta-D-glucopyranose-(1-2)-beta-D-glucopyranose-(1-2)-beta-D-glucopyranose-(1-2)-beta-D-glucopyranose.



Mol	Chain	Residues	Atoms			ZeroOcc	AltConf	Trace
2	C	10	Total	C	O	0	0	0
			111	60	51			

- Molecule 3 is beta-D-glucopyranose (CCD ID: BGC) (formula: C₆H₁₂O₆) (labeled as "Ligand of Interest" by depositor).



Mol	Chain	Residues	Atoms			ZeroOcc	AltConf
3	A	1	Total	C	O	0	0
			12	6	6		

- Molecule 4 is GLYCEROL (CCD ID: GOL) (formula: $C_3H_8O_3$).



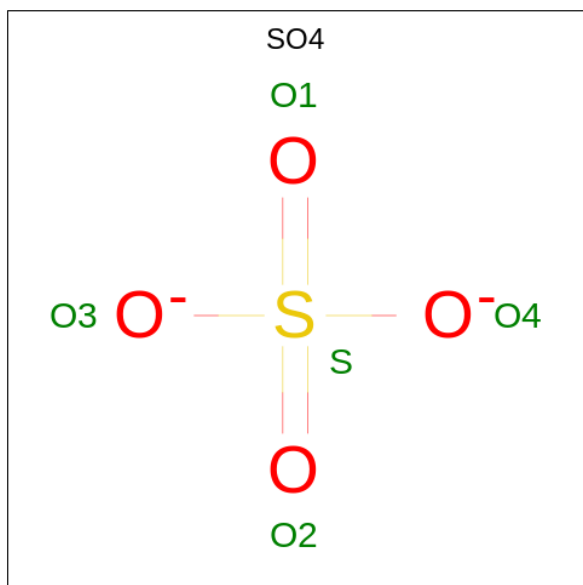
Mol	Chain	Residues	Atoms			ZeroOcc	AltConf
4	A	1	Total	C	O	0	0
			6	3	3		
4	A	1	Total	C	O	0	0
			6	3	3		
4	A	1	Total	C	O	0	0
			6	3	3		

Continued on next page...

Continued from previous page...

Mol	Chain	Residues	Atoms			ZeroOcc	AltConf
4	A	1	Total	C	O	0	0
			6	3	3		
4	A	1	Total	C	O	0	0
			6	3	3		
4	A	1	Total	C	O	0	0
			6	3	3		

- Molecule 5 is SULFATE ION (CCD ID: SO4) (formula: O₄S).



Mol	Chain	Residues	Atoms			ZeroOcc	AltConf
5	A	1	Total	O	S	0	0
			5	4	1		
5	A	1	Total	O	S	0	0
			5	4	1		

- Molecule 6 is water.

Mol	Chain	Residues	Atoms		ZeroOcc	AltConf
6	A	343	Total	O	0	0
			343	343		

4 Data and refinement statistics

Property	Value	Source
Space group	P 21 21 21	Depositor
Cell constants a, b, c, α , β , γ	73.71Å 83.26Å 94.27Å 90.00° 90.00° 90.00°	Depositor
Resolution (Å)	47.63 – 1.53 47.63 – 1.53	Depositor EDS
% Data completeness (in resolution range)	100.0 (47.63-1.53) 100.0 (47.63-1.53)	Depositor EDS
R_{merge}	(Not available)	Depositor
R_{sym}	(Not available)	Depositor
$\langle I/\sigma(I) \rangle$ ¹	2.15 (at 1.53Å)	Xtriage
Refinement program	REFMAC 5.8.0430	Depositor
R, R_{free}	0.158 , 0.176 0.172 , 0.189	Depositor DCC
R_{free} test set	4385 reflections (4.98%)	wwPDB-VP
Wilson B-factor (Å ²)	17.3	Xtriage
Anisotropy	0.002	Xtriage
Bulk solvent k_{sol} (e/Å ³), B_{sol} (Å ²)	0.40 , 36.0	EDS
L-test for twinning ²	$\langle L \rangle = 0.49$, $\langle L^2 \rangle = 0.33$	Xtriage
Estimated twinning fraction	No twinning to report.	Xtriage
F_o, F_c correlation	0.97	EDS
Total number of atoms	3976	wwPDB-VP
Average B, all atoms (Å ²)	20.0	wwPDB-VP

Xtriage's analysis on translational NCS is as follows: *The largest off-origin peak in the Patterson function is 4.81% of the height of the origin peak. No significant pseudotranslation is detected.*

¹Intensities estimated from amplitudes.

²Theoretical values of $\langle |L| \rangle$, $\langle L^2 \rangle$ for acentric reflections are 0.5, 0.333 respectively for untwinned datasets, and 0.375, 0.2 for perfectly twinned datasets.

5 Model quality

5.1 Standard geometry

Bond lengths and bond angles in the following residue types are not validated in this section: GOL, SO4, BGC

The Z score for a bond length (or angle) is the number of standard deviations the observed value is removed from the expected value. A bond length (or angle) with $|Z| > 5$ is considered an outlier worth inspection. RMSZ is the root-mean-square of all Z scores of the bond lengths (or angles).

Mol	Chain	Bond lengths		Bond angles	
		RMSZ	$\# Z > 5$	RMSZ	$\# Z > 5$
1	A	0.74	0/3557	1.10	5/4840 (0.1%)

Chiral center outliers are detected by calculating the chiral volume of a chiral center and verifying if the center is modelled as a planar moiety or with the opposite hand. A planarity outlier is detected by checking planarity of atoms in a peptide group, atoms in a mainchain group or atoms of a sidechain that are expected to be planar.

Mol	Chain	#Chirality outliers	#Planarity outliers
1	A	0	2

There are no bond length outliers.

All (5) bond angle outliers are listed below:

Mol	Chain	Res	Type	Atoms	Z	Observed(°)	Ideal(°)
1	A	163	ARG	CD-NE-CZ	6.85	133.99	124.40
1	A	394	ARG	NE-CZ-NH1	-6.43	115.07	121.50
1	A	203	PHE	CA-CB-CG	6.22	120.02	113.80
1	A	160	GLU	CB-CG-CD	5.80	122.47	112.60
1	A	128	PHE	CA-CB-CG	5.77	119.57	113.80

There are no chirality outliers.

All (2) planarity outliers are listed below:

Mol	Chain	Res	Type	Group
1	A	478[A]	ARG	Sidechain
1	A	67[B]	VAL	Mainchain

5.2 Too-close contacts ⓘ

In the following table, the Non-H and H(model) columns list the number of non-hydrogen atoms and hydrogen atoms in the chain respectively. The H(added) column lists the number of hydrogen atoms added and optimized by MolProbity. The Clashes column lists the number of clashes within the asymmetric unit, whereas Symm-Clashes lists symmetry-related clashes.

Mol	Chain	Non-H	H(model)	H(added)	Clashes	Symm-Clashes
1	A	3464	0	3302	8	0
2	C	111	0	93	1	0
3	A	12	0	12	1	0
4	A	36	0	48	0	0
5	A	10	0	0	0	0
6	A	343	0	0	1	0
All	All	3976	0	3455	9	0

The all-atom clashscore is defined as the number of clashes found per 1000 atoms (including hydrogen atoms). The all-atom clashscore for this structure is 1.

All (9) close contacts within the same asymmetric unit are listed below, sorted by their clash magnitude.

Atom-1	Atom-2	Interatomic distance (Å)	Clash overlap (Å)
1:A:168:TYR:HB3	1:A:485:LEU:HD11	1.84	0.59
1:A:133[B]:MET:SD	6:A:621:HOH:O	2.59	0.53
3:A:501:BGC:O3	2:C:1:BGC:H5	2.15	0.46
1:A:478[A]:ARG:HE	1:A:478[A]:ARG:HB2	1.66	0.44
1:A:335[B]:MET:HE3	1:A:337:ILE:HD11	2.00	0.44
1:A:133[A]:MET:SD	1:A:339:VAL:HG11	2.58	0.43
1:A:409:LEU:HD12	1:A:409:LEU:HA	1.93	0.42
1:A:433:PRO:HG2	1:A:435:ILE:HD12	2.02	0.41
1:A:235:TYR:N	1:A:236:PRO:CD	2.84	0.40

There are no symmetry-related clashes.

5.3 Torsion angles ⓘ

5.3.1 Protein backbone ⓘ

In the following table, the Percentiles column shows the percent Ramachandran outliers of the chain as a percentile score with respect to all X-ray entries followed by that with respect to entries of similar resolution.

The Analysed column shows the number of residues for which the backbone conformation was

analysed, and the total number of residues.

Mol	Chain	Analysed	Favoured	Allowed	Outliers	Percentiles	
1	A	431/474 (91%)	417 (97%)	14 (3%)	0	100	100

There are no Ramachandran outliers to report.

5.3.2 Protein sidechains ⓘ

In the following table, the Percentiles column shows the percent sidechain outliers of the chain as a percentile score with respect to all X-ray entries followed by that with respect to entries of similar resolution.

The Analysed column shows the number of residues for which the sidechain conformation was analysed, and the total number of residues.

Mol	Chain	Analysed	Rotameric	Outliers	Percentiles	
1	A	360/389 (92%)	357 (99%)	3 (1%)	73	51

All (3) residues with a non-rotameric sidechain are listed below:

Mol	Chain	Res	Type
1	A	65	GLN
1	A	80	GLU
1	A	203	PHE

Sometimes sidechains can be flipped to improve hydrogen bonding and reduce clashes. All (4) such sidechains are listed below:

Mol	Chain	Res	Type
1	A	116	ASN
1	A	316	ASN
1	A	395	GLN
1	A	472	ASN

5.3.3 RNA ⓘ

There are no RNA molecules in this entry.

5.4 Non-standard residues in protein, DNA, RNA chains ⓘ

There are no non-standard protein/DNA/RNA residues in this entry.

5.5 Carbohydrates ⓘ

10 monosaccharides are modelled in this entry.

In the following table, the Counts columns list the number of bonds (or angles) for which Mogul statistics could be retrieved, the number of bonds (or angles) that are observed in the model and the number of bonds (or angles) that are defined in the Chemical Component Dictionary. The Link column lists molecule types, if any, to which the group is linked. The Z score for a bond length (or angle) is the number of standard deviations the observed value is removed from the expected value. A bond length (or angle) with $|Z| > 2$ is considered an outlier worth inspection. RMSZ is the root-mean-square of all Z scores of the bond lengths (or angles).

Mol	Type	Chain	Res	Link	Bond lengths			Bond angles		
					Counts	RMSZ	# Z > 2	Counts	RMSZ	# Z > 2
2	BGC	C	1	2	12,12,12	0.28	0	17,17,17	0.91	1 (5%)
2	BGC	C	10	2	11,11,12	0.22	0	15,15,17	0.68	0
2	BGC	C	2	2	11,11,12	0.35	0	15,15,17	0.64	0
2	BGC	C	3	2	11,11,12	0.30	0	15,15,17	0.58	0
2	BGC	C	4	2	11,11,12	0.42	0	15,15,17	0.81	0
2	BGC	C	5	2	11,11,12	0.37	0	15,15,17	0.65	0
2	BGC	C	6	2	11,11,12	0.48	0	15,15,17	0.58	0
2	BGC	C	7	2	11,11,12	0.44	0	15,15,17	1.03	2 (13%)
2	BGC	C	8	2	11,11,12	0.32	0	15,15,17	0.55	0
2	BGC	C	9	2	11,11,12	0.43	0	15,15,17	0.43	0

In the following table, the Chirals column lists the number of chiral outliers, the number of chiral centers analysed, the number of these observed in the model and the number defined in the Chemical Component Dictionary. Similar counts are reported in the Torsion and Rings columns. '-' means no outliers of that kind were identified.

Mol	Type	Chain	Res	Link	Chirals	Torsions	Rings
2	BGC	C	1	2	-	2/2/22/22	0/1/1/1
2	BGC	C	10	2	-	0/2/19/22	0/1/1/1
2	BGC	C	2	2	-	0/2/19/22	0/1/1/1
2	BGC	C	3	2	-	0/2/19/22	0/1/1/1
2	BGC	C	4	2	-	0/2/19/22	0/1/1/1
2	BGC	C	5	2	-	0/2/19/22	0/1/1/1
2	BGC	C	6	2	-	0/2/19/22	0/1/1/1
2	BGC	C	7	2	-	0/2/19/22	0/1/1/1
2	BGC	C	8	2	-	0/2/19/22	0/1/1/1
2	BGC	C	9	2	-	0/2/19/22	0/1/1/1

There are no bond length outliers.

All (3) bond angle outliers are listed below:

Mol	Chain	Res	Type	Atoms	Z	Observed(°)	Ideal(°)
2	C	7	BGC	O2-C2-C3	-2.39	105.35	110.14
2	C	1	BGC	C4-C3-C2	-2.15	107.07	110.82
2	C	7	BGC	C1-C2-C3	2.10	112.25	109.67

There are no chirality outliers.

All (2) torsion outliers are listed below:

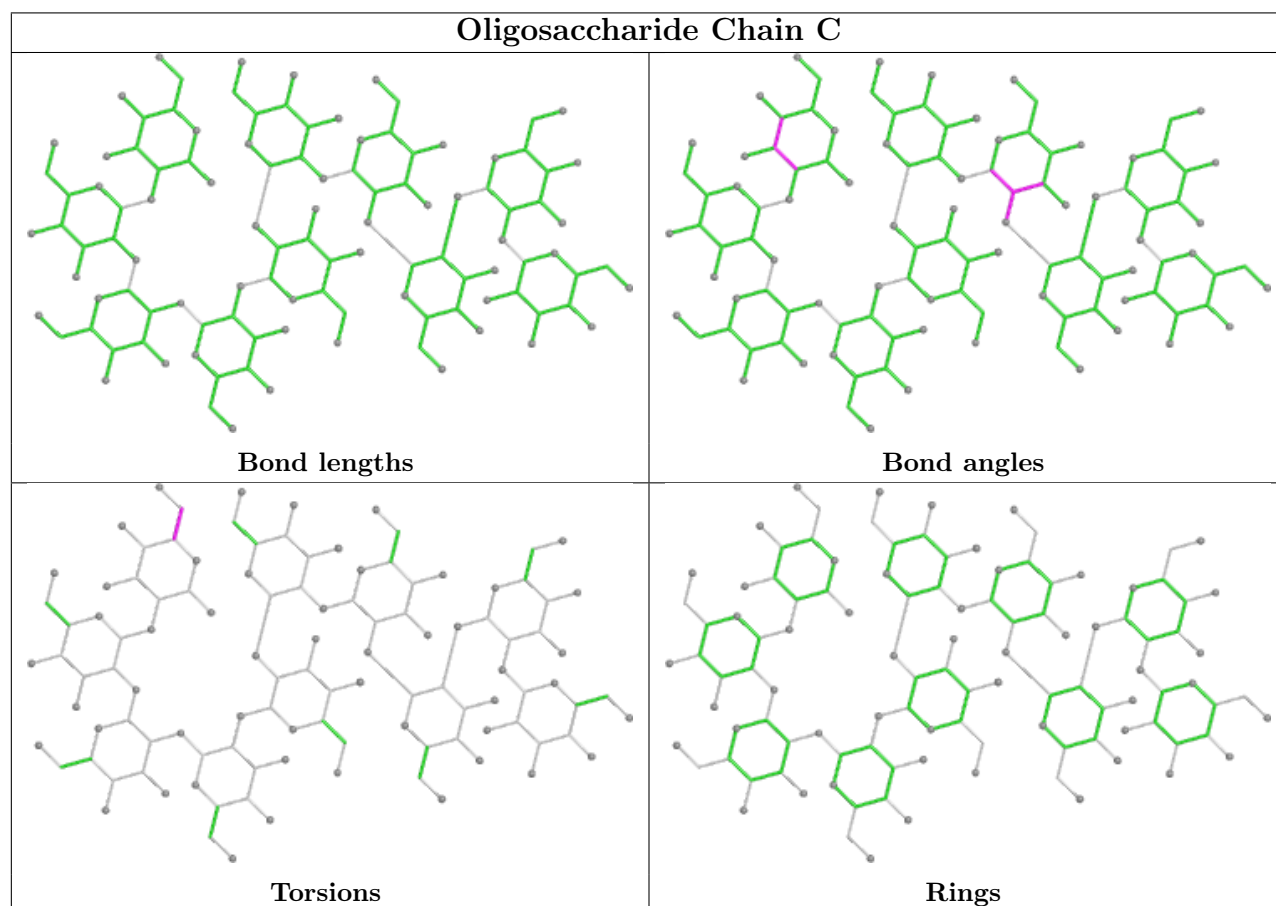
Mol	Chain	Res	Type	Atoms
2	C	1	BGC	O5-C5-C6-O6
2	C	1	BGC	C4-C5-C6-O6

There are no ring outliers.

1 monomer is involved in 1 short contact:

Mol	Chain	Res	Type	Clashes	Symm-Clashes
2	C	1	BGC	1	0

The following is a two-dimensional graphical depiction of Mogul quality analysis of bond lengths, bond angles, torsion angles, and ring geometry for oligosaccharide.



5.6 Ligand geometry

9 ligands are modelled in this entry.

In the following table, the Counts columns list the number of bonds (or angles) for which Mogul statistics could be retrieved, the number of bonds (or angles) that are observed in the model and the number of bonds (or angles) that are defined in the Chemical Component Dictionary. The Link column lists molecule types, if any, to which the group is linked. The Z score for a bond length (or angle) is the number of standard deviations the observed value is removed from the expected value. A bond length (or angle) with $|Z| > 2$ is considered an outlier worth inspection. RMSZ is the root-mean-square of all Z scores of the bond lengths (or angles).

Mol	Type	Chain	Res	Link	Bond lengths			Bond angles		
					Counts	RMSZ	# $ Z > 2$	Counts	RMSZ	# $ Z > 2$
4	GOL	A	506	-	5,5,5	0.09	0	5,5,5	0.17	0
4	GOL	A	505	-	5,5,5	0.08	0	5,5,5	0.29	0
4	GOL	A	507	-	5,5,5	0.11	0	5,5,5	0.27	0
4	GOL	A	503	-	5,5,5	0.22	0	5,5,5	0.45	0
3	BGC	A	501	-	12,12,12	0.61	0	17,17,17	1.31	2 (11%)
4	GOL	A	502	-	5,5,5	0.16	0	5,5,5	0.54	0
5	SO4	A	509	-	4,4,4	0.37	0	6,6,6	0.30	0
4	GOL	A	504	-	5,5,5	0.09	0	5,5,5	0.24	0
5	SO4	A	508	-	4,4,4	0.39	0	6,6,6	0.15	0

In the following table, the Chirals column lists the number of chiral outliers, the number of chiral centers analysed, the number of these observed in the model and the number defined in the Chemical Component Dictionary. Similar counts are reported in the Torsion and Rings columns. '-' means no outliers of that kind were identified.

Mol	Type	Chain	Res	Link	Chirals	Torsions	Rings
4	GOL	A	506	-	-	2/4/4/4	-
4	GOL	A	505	-	-	0/4/4/4	-
4	GOL	A	507	-	-	0/4/4/4	-
4	GOL	A	503	-	-	0/4/4/4	-
3	BGC	A	501	-	-	2/2/22/22	0/1/1/1
4	GOL	A	502	-	-	0/4/4/4	-
4	GOL	A	504	-	-	0/4/4/4	-

There are no bond length outliers.

All (2) bond angle outliers are listed below:

Mol	Chain	Res	Type	Atoms	Z	Observed(°)	Ideal(°)
3	A	501	BGC	C3-C4-C5	-2.81	105.23	110.24
3	A	501	BGC	C4-C3-C2	-2.52	106.43	110.82

There are no chirality outliers.

All (4) torsion outliers are listed below:

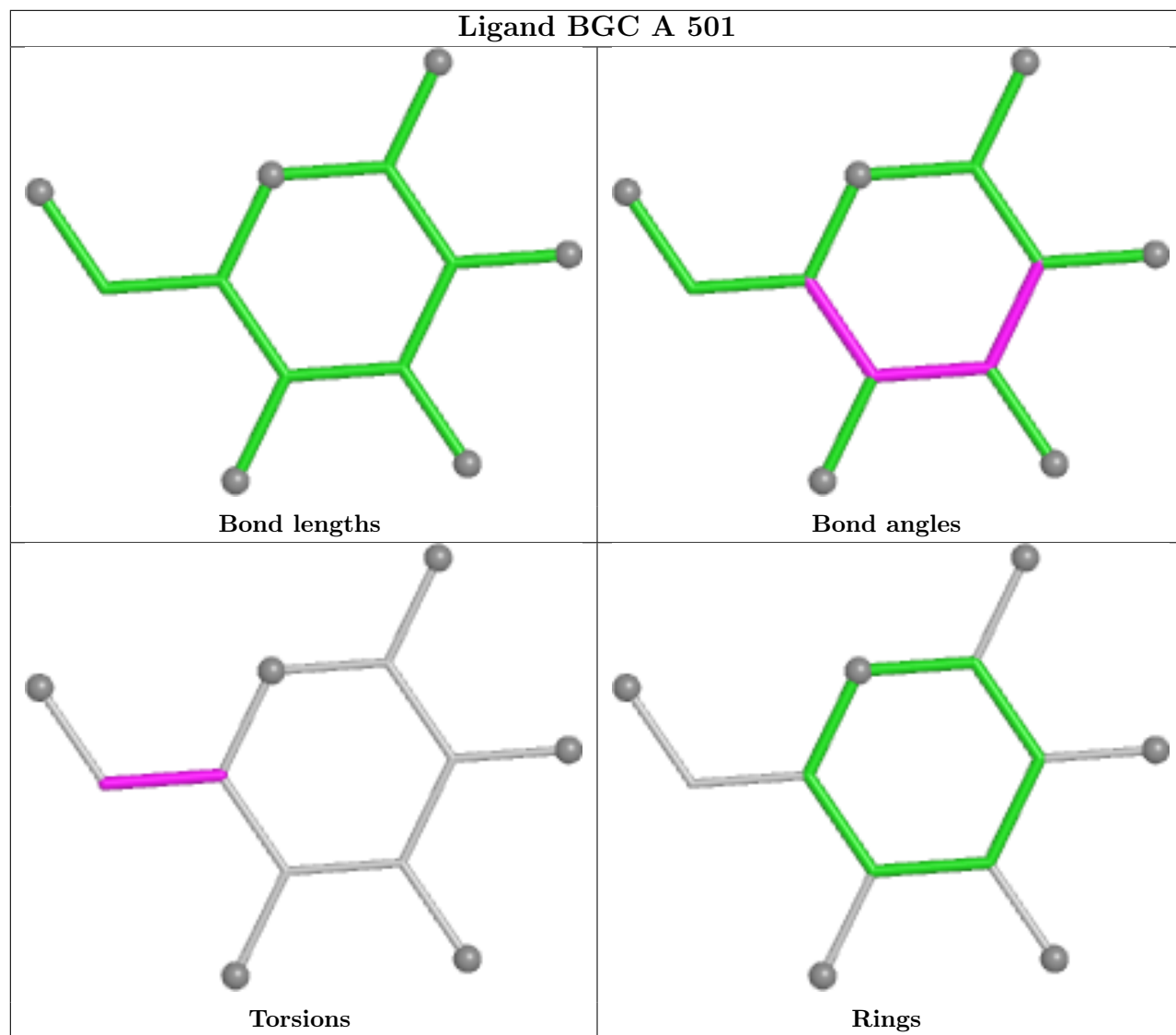
Mol	Chain	Res	Type	Atoms
4	A	506	GOL	C1-C2-C3-O3
4	A	506	GOL	O2-C2-C3-O3
3	A	501	BGC	O5-C5-C6-O6
3	A	501	BGC	C4-C5-C6-O6

There are no ring outliers.

1 monomer is involved in 1 short contact:

Mol	Chain	Res	Type	Clashes	Symm-Clashes
3	A	501	BGC	1	0

The following is a two-dimensional graphical depiction of Mogul quality analysis of bond lengths, bond angles, torsion angles, and ring geometry for all instances of the Ligand of Interest. In addition, ligands with molecular weight > 250 and outliers as shown on the validation Tables will also be included. For torsion angles, if less than 5% of the Mogul distribution of torsion angles is within 10 degrees of the torsion angle in question, then that torsion angle is considered an outlier. Any bond that is central to one or more torsion angles identified as an outlier by Mogul will be highlighted in the graph. For rings, the root-mean-square deviation (RMSD) between the ring in question and similar rings identified by Mogul is calculated over all ring torsion angles. If the average RMSD is greater than 60 degrees and the minimal RMSD between the ring in question and any Mogul-identified rings is also greater than 60 degrees, then that ring is considered an outlier. The outliers are highlighted in purple. The color gray indicates Mogul did not find sufficient equivalents in the CSD to analyse the geometry.



5.7 Other polymers [i](#)

There are no such residues in this entry.

5.8 Polymer linkage issues [i](#)

There are no chain breaks in this entry.

6 Fit of model and data ⓘ

6.1 Protein, DNA and RNA chains ⓘ

In the following table, the column labelled ‘#RSRZ> 2’ contains the number (and percentage) of RSRZ outliers, followed by percent RSRZ outliers for the chain as percentile scores relative to all X-ray entries and entries of similar resolution. The OWAB column contains the minimum, median, 95th percentile and maximum values of the occupancy-weighted average B-factor per residue. The column labelled ‘Q< 0.9’ lists the number of (and percentage) of residues with an average occupancy less than 0.9.

Mol	Chain	Analysed	<RSRZ>	#RSRZ>2		OWAB(Å ²)	Q<0.9
1	A	424/474 (89%)	0.04	19 (4%)	38 46	7, 17, 32, 63	9 (2%)

All (19) RSRZ outliers are listed below:

Mol	Chain	Res	Type	RSRZ
1	A	67[A]	VAL	3.6
1	A	65	GLN	3.4
1	A	488	GLU	3.2
1	A	439	GLU	2.9
1	A	456	ILE	2.8
1	A	487	LEU	2.7
1	A	345	PRO	2.7
1	A	108	GLY	2.6
1	A	486	LYS	2.6
1	A	398	ASP	2.4
1	A	80	GLU	2.4
1	A	438	GLY	2.4
1	A	410	ASP	2.3
1	A	478[A]	ARG	2.2
1	A	455	GLY	2.1
1	A	195	ASN	2.1
1	A	450	PHE	2.0
1	A	485	LEU	2.0
1	A	169	ASN	2.0

6.2 Non-standard residues in protein, DNA, RNA chains ⓘ

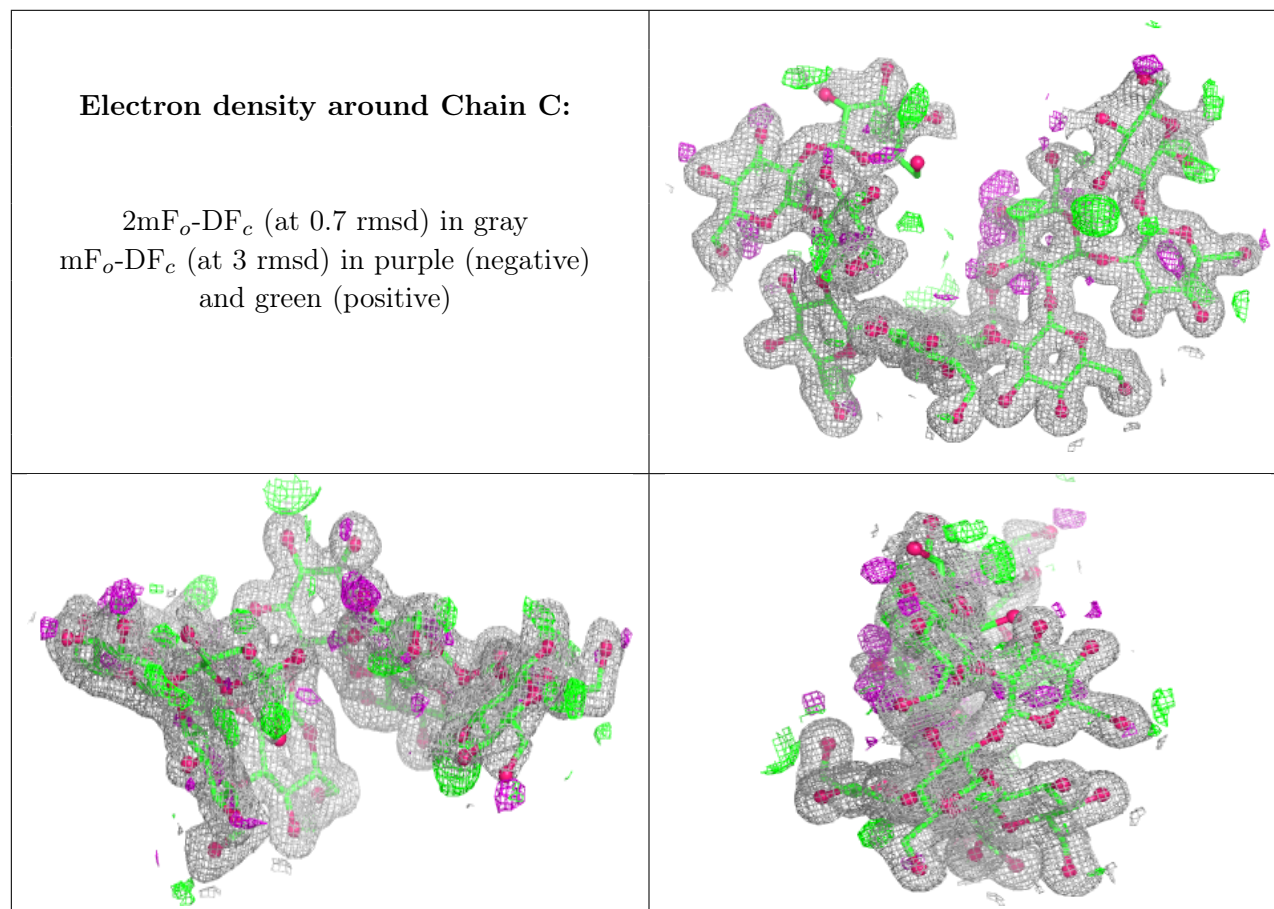
There are no non-standard protein/DNA/RNA residues in this entry.

6.3 Carbohydrates ⓘ

In the following table, the Atoms column lists the number of modelled atoms in the group and the number defined in the chemical component dictionary. The B-factors column lists the minimum, median, 95th percentile and maximum values of B factors of atoms in the group. The column labelled 'Q< 0.9' lists the number of atoms with occupancy less than 0.9.

Mol	Type	Chain	Res	Atoms	RSCC	RSR	B-factors(Å ²)	Q<0.9
2	BGC	C	1	12/12	-	-	31,45,53,57	0
2	BGC	C	2	11/12	-	-	15,21,24,30	0
2	BGC	C	3	11/12	-	-	16,25,36,36	0
2	BGC	C	4	11/12	-	-	11,12,13,13	0
2	BGC	C	5	11/12	-	-	11,13,16,17	0
2	BGC	C	6	11/12	-	-	11,12,13,14	0
2	BGC	C	7	11/12	-	-	13,15,18,18	0
2	BGC	C	8	11/12	-	-	20,25,27,32	0
2	BGC	C	9	11/12	-	-	22,26,30,32	0
2	BGC	C	10	11/12	-	-	57,62,69,78	0

The following is a graphical depiction of the model fit to experimental electron density for oligosaccharide. Each fit is shown from different orientation to approximate a three-dimensional view.



6.4 Ligands

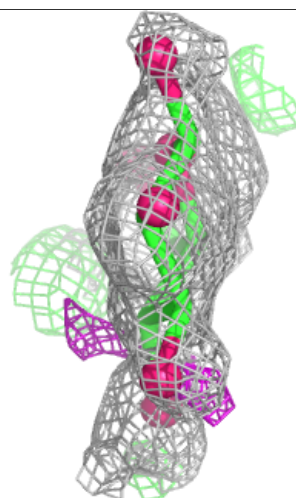
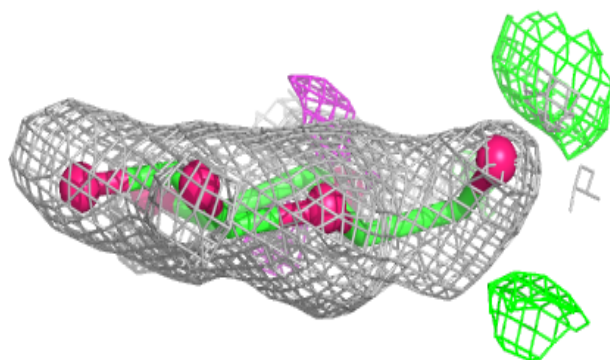
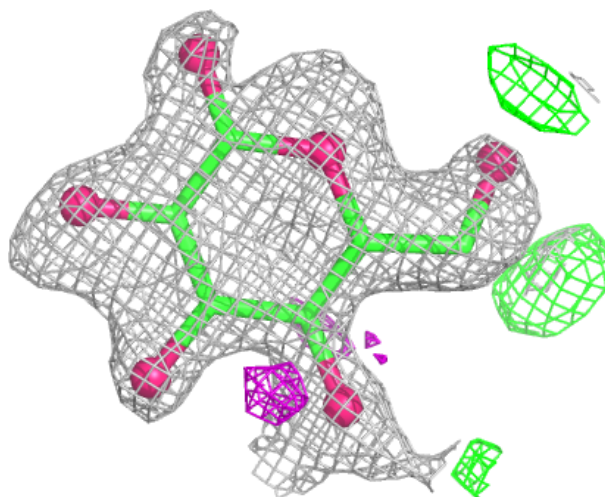
In the following table, the Atoms column lists the number of modelled atoms in the group and the number defined in the chemical component dictionary. The B-factors column lists the minimum, median, 95th percentile and maximum values of B factors of atoms in the group. The column labelled 'Q< 0.9' lists the number of atoms with occupancy less than 0.9.

Mol	Type	Chain	Res	Atoms	RSCC	RSR	B-factors(Å ²)	Q<0.9
4	GOL	A	505	6/6	0.79	0.20	36,41,45,49	0
3	BGC	A	501	12/12	0.82	0.15	40,50,57,60	0
4	GOL	A	504	6/6	0.83	0.16	30,37,39,42	0
4	GOL	A	507	6/6	0.83	0.17	32,37,42,43	0
4	GOL	A	506	6/6	0.87	0.19	31,43,52,52	0
4	GOL	A	502	6/6	0.91	0.15	14,21,22,23	0
5	SO4	A	509	5/5	0.91	0.09	46,46,55,71	0
5	SO4	A	508	5/5	0.94	0.08	35,42,49,55	0
4	GOL	A	503	6/6	0.97	0.06	14,15,17,19	0

The following is a graphical depiction of the model fit to experimental electron density of all instances of the Ligand of Interest. In addition, ligands with molecular weight > 250 and outliers as shown on the geometry validation Tables will also be included. Each fit is shown from different orientation to approximate a three-dimensional view.

Electron density around BGC A 501:

$2mF_o-DF_c$ (at 0.7 rmsd) in gray
 mF_o-DF_c (at 3 rmsd) in purple (negative)
and green (positive)



6.5 Other polymers ⓘ

There are no such residues in this entry.